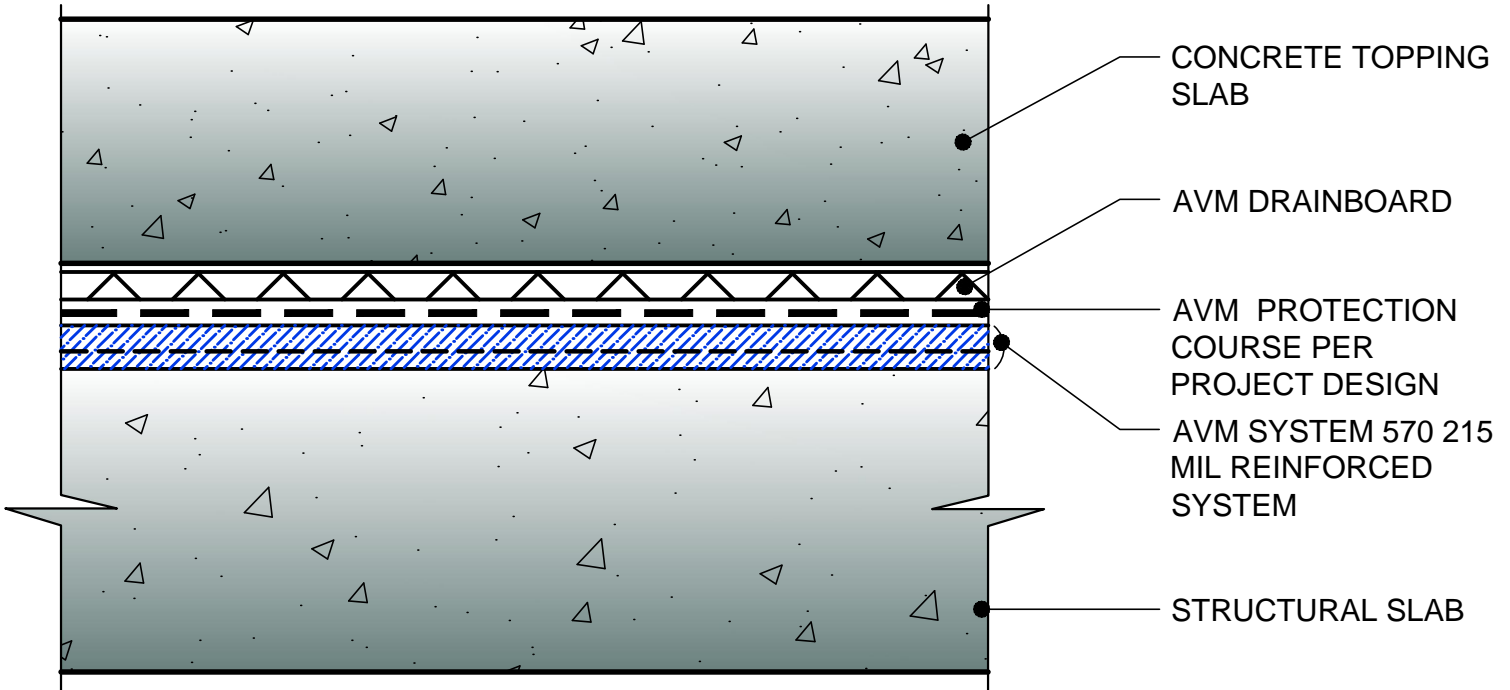


DETAIL #: AVM-0570-0001-C

AVM SYSTEM 570

TYPICAL PLAZA

**Concrete Topping Slab
over Structural Slab
AVM Aussie Membrane 570
Hot Rubber**



USE AVM PRIMER ON CONCRETE RECEIVING AVM SYSTEM 570

NOTES:

1. Aussie Membrane 570 is a Hot Rubber(Hot-Applied Asphalt-Based Composition Membrane) for Between-Slabs, Planters, Roof-Gardens and similar type Waterproofing.
2. Typical membrane is 210 mils thick with fabric reinforcement. If specified differently, contact AVM for approval.
3. Contact AVM if no drain board or protection board is specified.
4. Remove/grind/repair as necessary any protrusions, sharp edges, etc that may puncture or damage the membrane.
5. Deck-to-Wall corners must be waterproofed as shown on AVM's Details.
6. Substrates must be sloped to drains and/or edges before membrane installation. (Min 1/4" per foot) Substrates must have sufficient drains and proper drainage systems to effectively evacuate excessive water.
7. If water is to drain over the edge, then edge metals **MUST** have sufficient weep holes (at least every 6") and must be strong enough (thick enough) to act as a concrete form.
8. Many edge details are possible. All must allow for proper water evacuation. (None should trap water) Consult AVM for details.
9. Drainage board for topping Slabs up to 4" thick for pedestrian applications: Use AVM Drain Board 6000.
10. Drainage board for topping slabs over 4" thick or for vehicular applications:Use AVM Drain Board 9000.

AVM Industries, Inc.
8245 Remmet Ave, Canoga Park, CA 91304

Quality Waterproofing Products

888.414.1041 818.888.0050
www.avmindustries.com

FILE NAME: 0570-0001-C-Concrete-Topping-Slab-over-Structural-Slab

Protected by Copyright - AVM Industries, Inc.

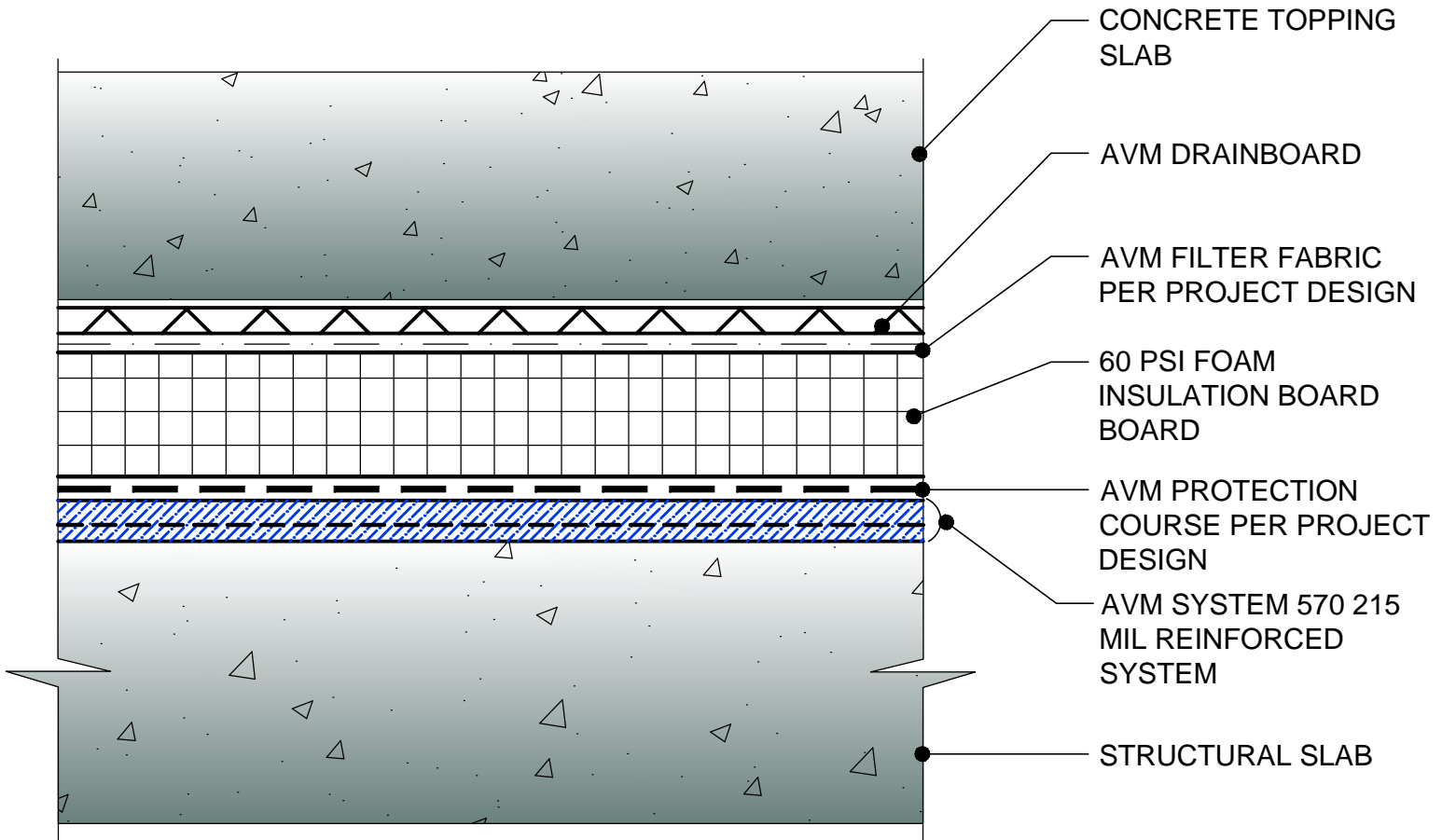
Revision Date 05/31/2016

DETAIL #: AVM-0570-0051-C

AVM SYSTEM 570

TYPICAL PLAZA

Insulated Concrete Topping Layer
over Structural Slab
AVM Aussie Membrane 570
Hot Rubber



USE AVM PRIMER ON CONCRETE RECEIVING AVM SYSTEM 570

NOTES:

1. Aussie Membrane 570 is a Hot Rubber(Hot-Applied Asphalt-Based Composition Membrane) for Between-Slabs, Planters, Roof-Gardens and similar type Waterproofing.
2. Typical membrane is 210 mils thick with fabric reinforcement. If specified differently, contact AVM for approval.
3. Contact AVM if no drain board or protection board is specified.
4. Remove/grind/repair as necessary any protrusions, sharp edges, etc that may puncture or damage the membrane.
5. Deck-to-Wall corners must be waterproofed as shown on AVM's Details.
6. Substrates must be sloped to drains and/or edges before membrane installation. (Min 1/4" per foot) Substrates must have sufficient drains and proper drainage systems to effectively evacuate excessive water.
7. If water is to drain over the edge, then edge metals MUST have sufficient weep holes (at least every 6") and must be strong enough (thick enough) to act as a concrete form.
8. Many edge details are possible. All must allow for proper water evacuation. (None should trap water) Consult AVM for details.
9. Drainage board for topping Slabs up to 4" thick for pedestrian applications: Use AVM Drain Board 6000.
10. Drainage board for topping slabs over 4" thick or for vehicular applications:Use AVM Drain Board 9000.

AVM Industries, Inc.
8245 Remmet Ave, Canoga Park, CA 91304

Quality Waterproofing Products

888.414.1041 818.888.0050
www.avmindustries.com

FILE NAME: **0570-0051-C-Insulated-Concrete-Topping-Layer-over-Structural-Slab**

Protected by Copyright - AVM Industries, Inc.

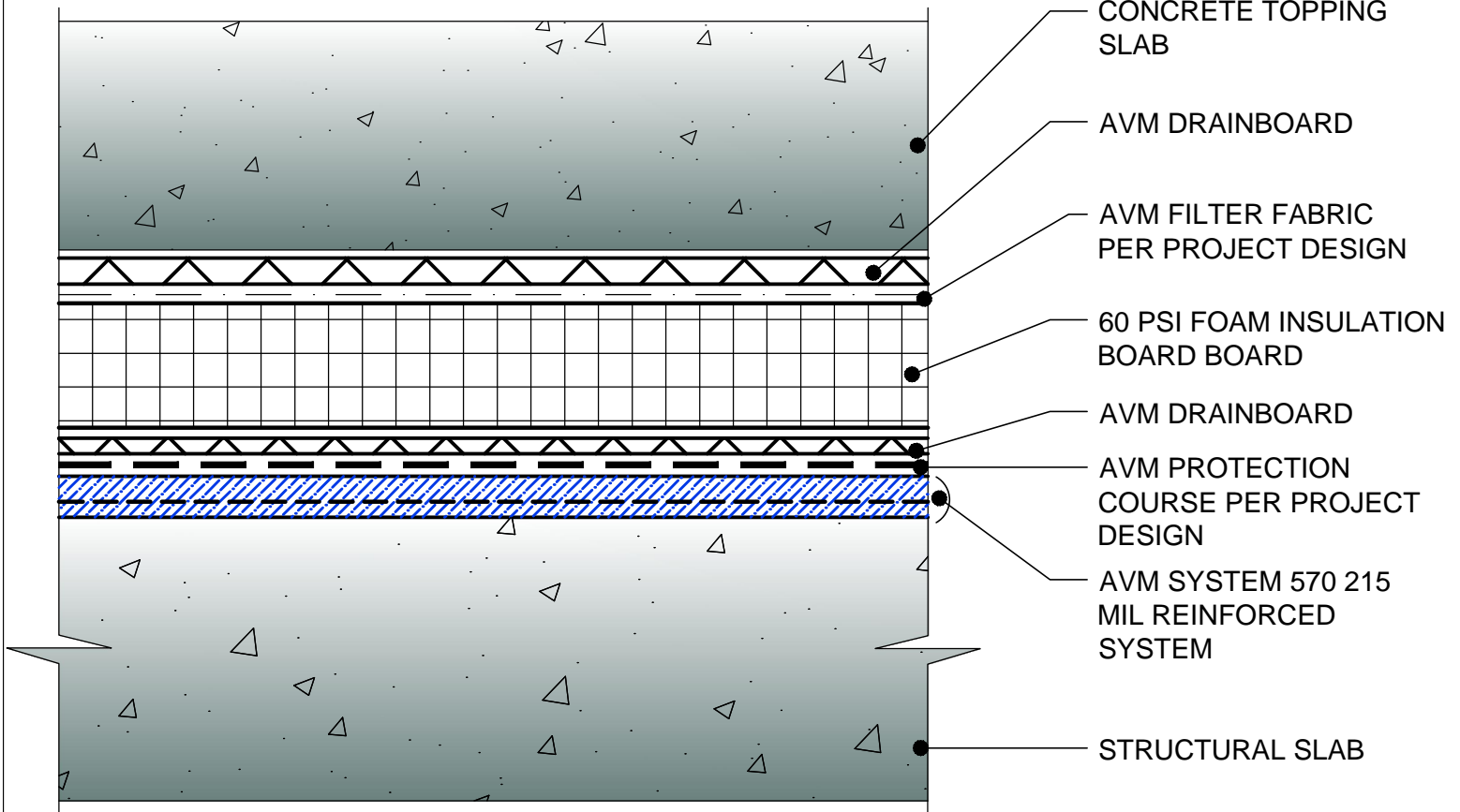
Revision Date 05/31/2016

DETAIL #: AVM-0570-0061-C

AVM SYSTEM 570

TYPICAL PLAZA

**Insulated Concrete Topping Layer
with Double Drain Board
over Structural Slab
AVM Aussie Membrane 570
Hot Rubber**



USE AVM PRIMER ON CONCRETE RECEIVING AVM SYSTEM 570

NOTES:

1. Aussie Membrane 570 is a Hot Rubber(Hot-Applied Asphalt-Based Composition Membrane) for Between-Slabs, Planters, Roof-Gardens and similar type Waterproofing.
2. Typical membrane is 210 mils thick with fabric reinforcement. If specified differently, contact AVM for approval.
3. Contact AVM if no drain board or protection board is specified.
4. Remove/grind/repair as necessary any protrusions, sharp edges, etc that may puncture or damage the membrane.
5. Deck-to-Wall corners must be waterproofed as shown on AVM's Details.
6. Substrates must be sloped to drains and/or edges before membrane installation. (Min 1/4" per foot) Substrates must have sufficient drains and proper drainage systems to effectively evacuate excessive water.
7. If water is to drain over the edge, then edge metals **MUST** have sufficient weep holes (at least every 6") and must be strong enough (thick enough) to act as a concrete form.
8. Many edge details are possible. All must allow for proper water evacuation. (None should trap water) Consult AVM for details.
9. Drainage board for topping Slabs up to 4" thick for pedestrian applications: Use AVM Drain Board 6000.
10. Drainage board for topping slabs over 4" thick or for vehicular applications:Use AVM Drain Board 9000.

AVM Industries, Inc.
8245 Remmet Ave, Canoga Park, CA 91304

Quality Waterproofing Products

888.414.1041 818.888.0050
www.avmindustries.com

FILE NAME: 0570-0061-C-Insulated-Concrete-Topping-Layer-with-Double-Drain-Board-over-Structural-Slab

Protected by Copyright - AVM Industries, Inc.

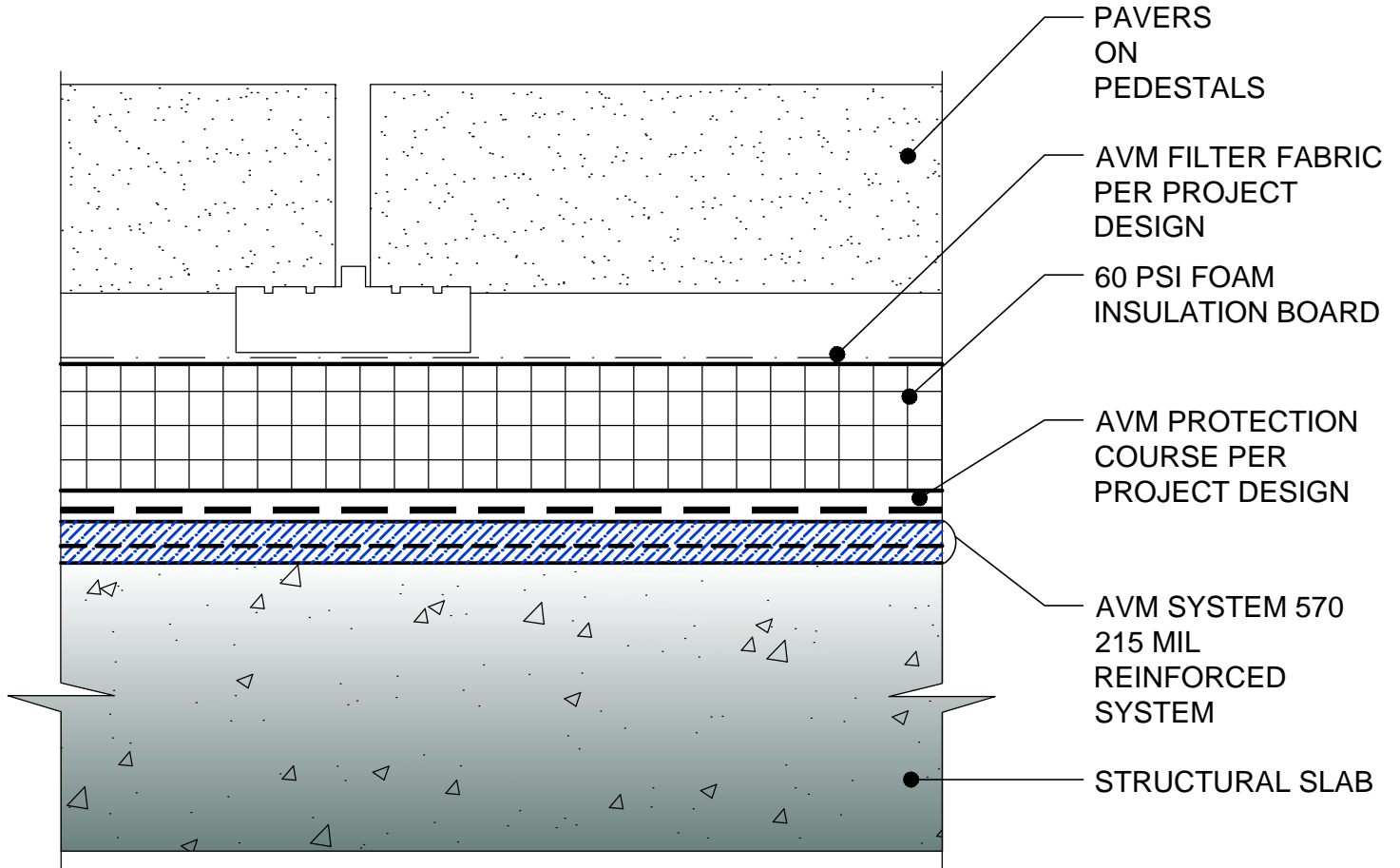
Revision Date 05/31/2016

DETAIL #: AVM-0570-0210-C

AVM SYSTEM 570

PLAZA DECK

Pavers on Pedestals without
Drainboard over Structural Slab
AVM Aussie Membrane 570
Hot Rubber



USE AVM PRIMER ON CONCRETE RECEIVING AVM SYSTEM 570

NOTES:

1. Aussie Membrane 570 is a Hot Rubber(Hot-Applied Asphalt-Based Composition Membrane) for Between-Slabs, Planters, Roof-Gardens and similar type Waterproofing.
2. Typical membrane is 210 mils thick with fabric reinforcement. If specified differently, contact AVM for approval.
3. Contact AVM if no drain board or protection board is specified.
4. Remove/grind/repair as necessary any protrusions, sharp edges, etc that may puncture or damage the membrane.
5. Deck-to-Wall corners must be waterproofed as shown on AVM's Details.
6. Substrates must be sloped to drains and/or edges before membrane installation. (Min 1/4" per foot) Substrates must have sufficient drains and proper drainage systems to effectively evacuate excessive water.
7. If water is to drain over the edge, then edge metals MUST have sufficient weep holes (at least every 6") and must be strong enough (thick enough) to act as a concrete form.
8. Many edge details are possible. All must allow for proper water evacuation. (None should trap water) Consult AVM for details.

AVM Industries, Inc.
8245 Remmet Ave, Canoga Park, CA 91304

Quality Waterproofing Products

888.414.1041 818.888.0050
www.avmindustries.com

FILE NAME: **0570-0210-C-Pavers-on-Pedestals-without-Drainboard-over-Structural-Slab**

Protected by Copyright - AVM Industries, Inc.

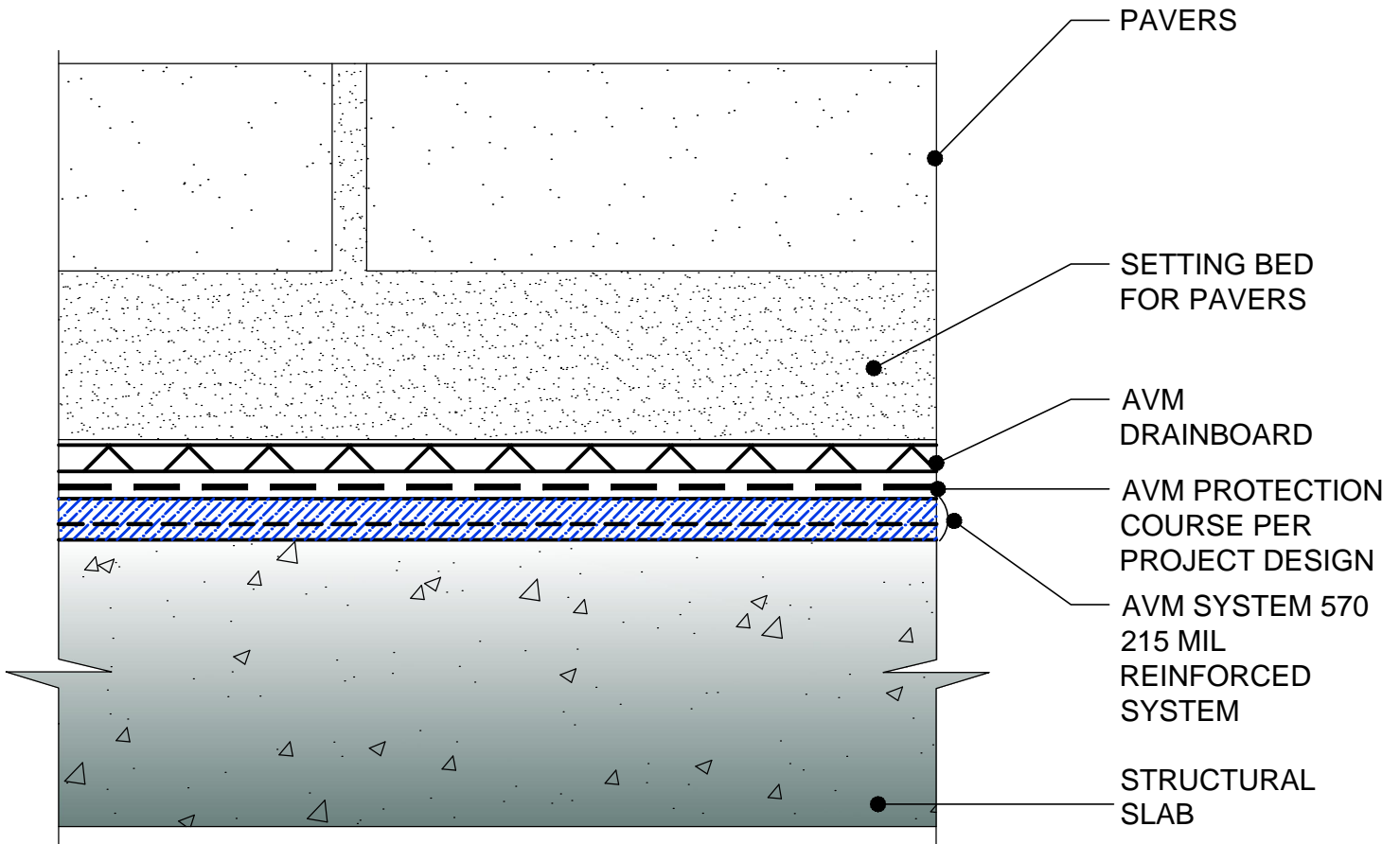
Revision Date 05/31/2016

DETAIL #: AVM-0570-0230-C

AVM SYSTEM 570

PLAZA DECK

Pavers in Setting Bed
over Structural Slab
AVM Aussie Membrane 570
Hot Rubber



NOTES:

1. Aussie Membrane 570 is a Hot Rubber(Hot-Applied Asphalt-Based Composition Membrane) for Between-Slabs, Planters, Roof-Gardens and similar type Waterproofing.
2. Typical membrane is 210 mils thick with fabric reinforcement. If specified differently, contact AVM for approval.
3. Contact AVM if no drain board or protection board is specified.
4. Remove/grind/repair as necessary any protrusions, sharp edges, etc that may puncture or damage the membrane.
5. Deck-to-Wall corners must be waterproofed as shown on AVM's Details.
6. Substrates must be sloped to drains and/or edges before membrane installation. (Min 1/4" per foot) Substrates must have sufficient drains and proper drainage systems to effectively evacuate excessive water.
7. If water is to drain over the edge, then edge metals MUST have sufficient weep holes (at least every 6") and must be strong enough (thick enough) to act as a concrete form.
8. Many edge details are possible. All must allow for proper water evacuation. (None should trap water) Consult AVM for details.
9. Drainage board for topping Slabs up to 4" thick for pedestrian applications: Use AVM Drain Board 6000.
10. Drainage board for topping slabs over 4" thick or for vehicular applications:Use AVM Drain Board 9000.

AVM Industries, Inc.
8245 Remmet Ave, Canoga Park, CA 91304

Quality Waterproofing Products

888.414.1041 818.888.0050
www.avmindustries.com

FILE NAME: 0570-0230-C-Pavers-in-Setting-Bed-over-Structural-Slab

Protected by Copyright - AVM Industries, Inc.

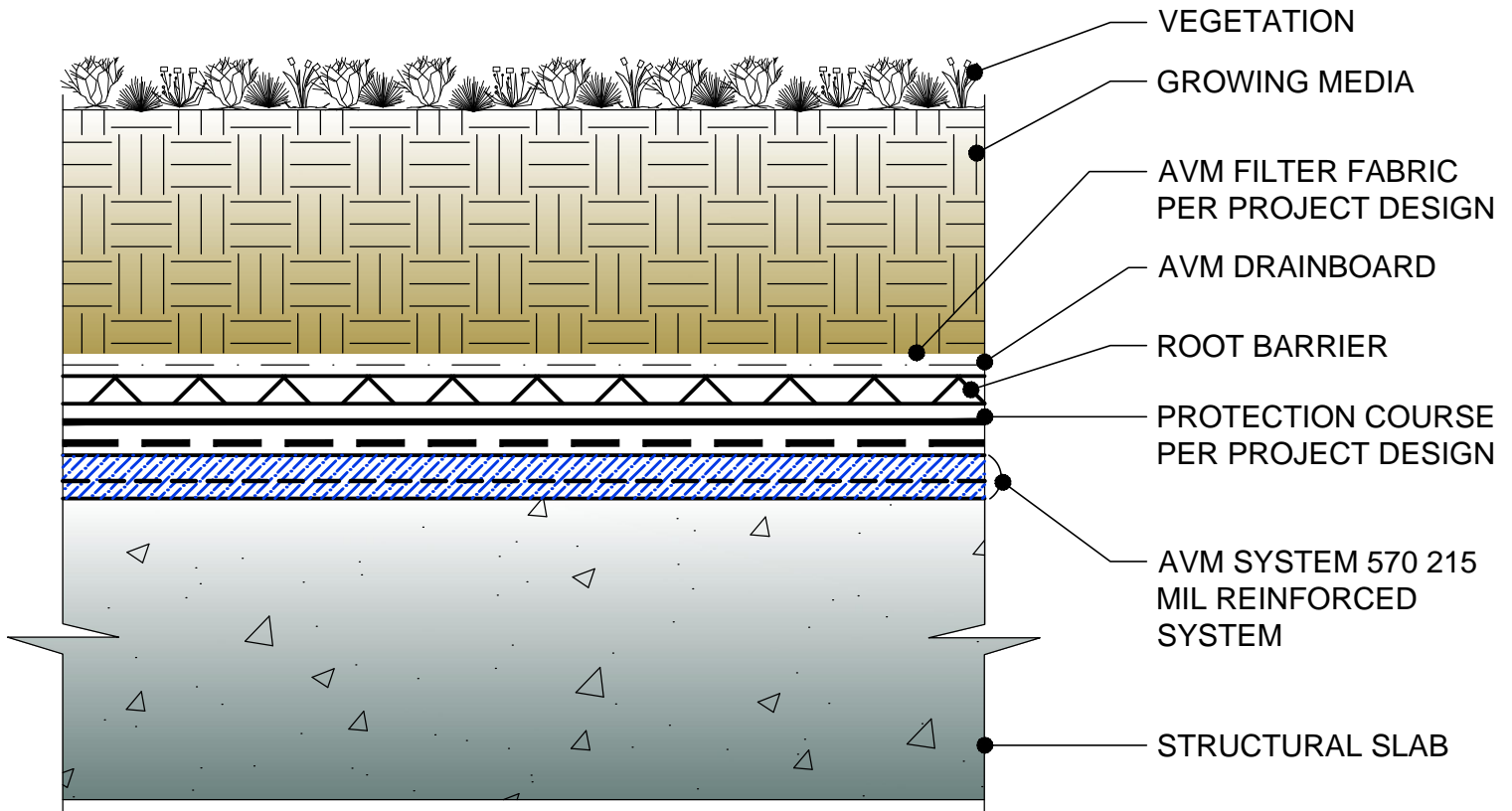
Revision Date 05/31/2016

DETAIL #: AVM-0570-0401-C

AVM SYSTEM 570

TYPICAL PLAZA

**Landscaped Assembly
over Structural Slab
AVM Aussie Membrane 570
Hot Rubber**



NOTES:

1. Aussie Membrane 570 is a Hot Rubber(Hot-Applied Asphalt-Based Composition Membrane) for Between-Slabs, Planters, Roof-Gardens and similar type Waterproofing.
2. Typical membrane is 210 mils thick with fabric reinforcement. If specified differently, contact AVM for approval.
3. Contact AVM if no drain board or protection board is specified.
4. Remove/grind/repair as necessary any protrusions, sharp edges, etc that may puncture or damage the membrane.
5. Deck-to-Wall corners must be waterproofed as shown on AVM's Details.
6. Substrates must be sloped to drains and/or edges before membrane installation. (Min 1/4" per foot) Substrates must have sufficient drains and proper drainage systems to effectively evacuate excessive water.

AVM Industries, Inc.
8245 Remmet Ave, Canoga Park, CA 91304

Quality Waterproofing Products

888.414.1041 818.888.0050
www.avmindustries.com

FILE NAME: 0570-0401-C-Landscaped-Assembly-over-Structural-Slab

Protected by Copyright - AVM Industries, Inc.

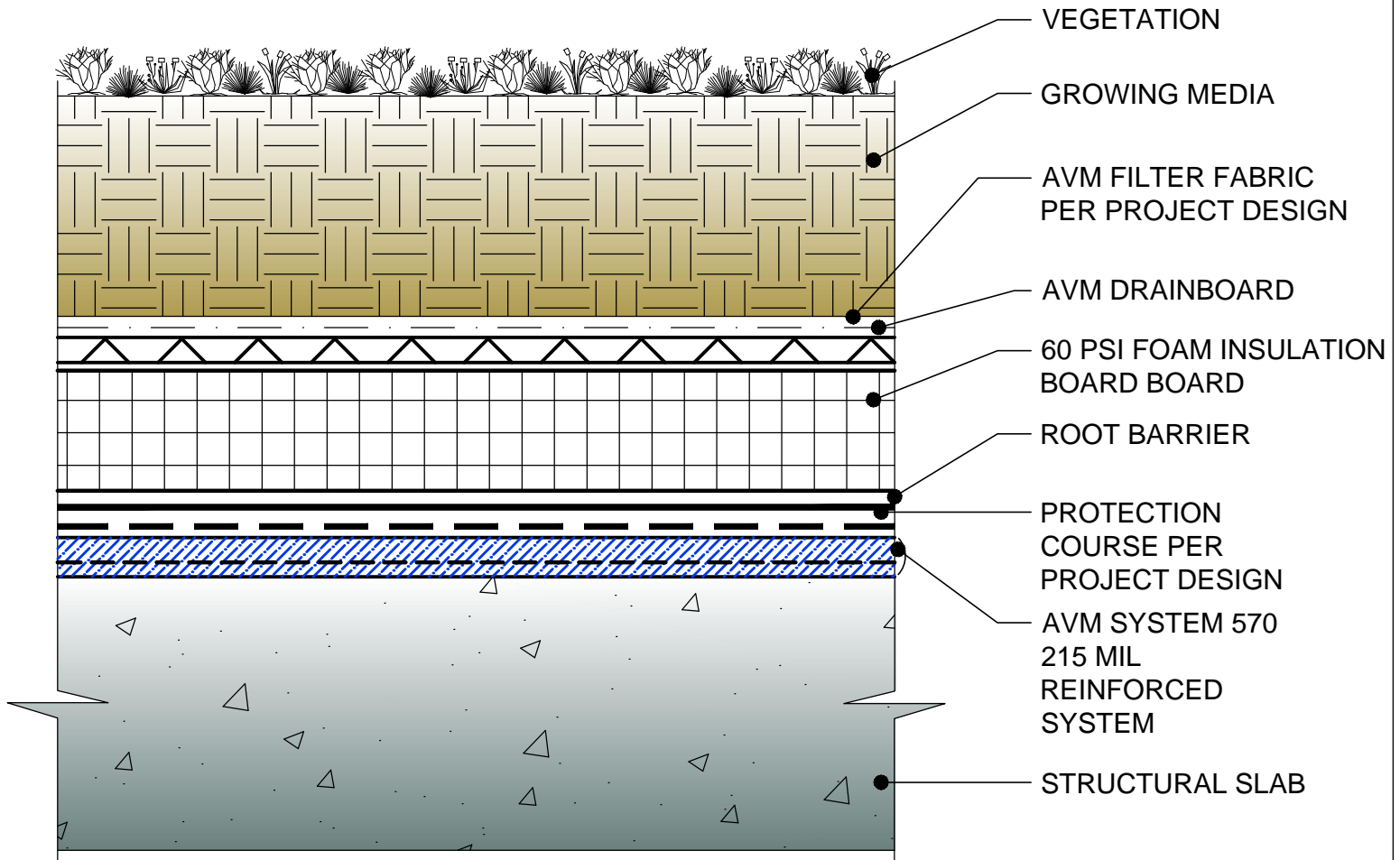
Revision Date 05/31/2016

DETAIL #: AVM-0570-0451-C

AVM SYSTEM 570

TYPICAL PLAZA

Insulated Landscaped Assembly
over Structural Slab
AVM Aussie Membrane 570
Hot Rubber



NOTES:

1. Aussie Membrane 570 is a Hot Rubber(Hot-Applied Asphalt-Based Composition Membrane) for Between-Slabs, Planters, Roof-Gardens and similar type Waterproofing.
2. Typical membrane is 210 mils thick with fabric reinforcement. If specified differently, contact AVM for approval.
3. Contact AVM if no drain board or protection board is specified.
4. Remove/grind/repair as necessary any protrusions, sharp edges, etc that may puncture or damage the membrane.
5. Deck-to-Wall corners must be waterproofed as shown on AVM's Details.
6. Substrates must be sloped to drains and/or edges before membrane installation. (Min 1/4" per foot) Substrates must have sufficient drains and proper drainage systems to effectively evacuate excessive water.

AVM Industries, Inc.
8245 Remmet Ave, Canoga Park, CA 91304

Quality Waterproofing Products

888.414.1041 818.888.0050
www.avmindustries.com

FILE NAME: **0570-0451-C-Insulated-Landscaped-Assembly-over-Structural-Slab**

Protected by Copyright - AVM Industries, Inc.

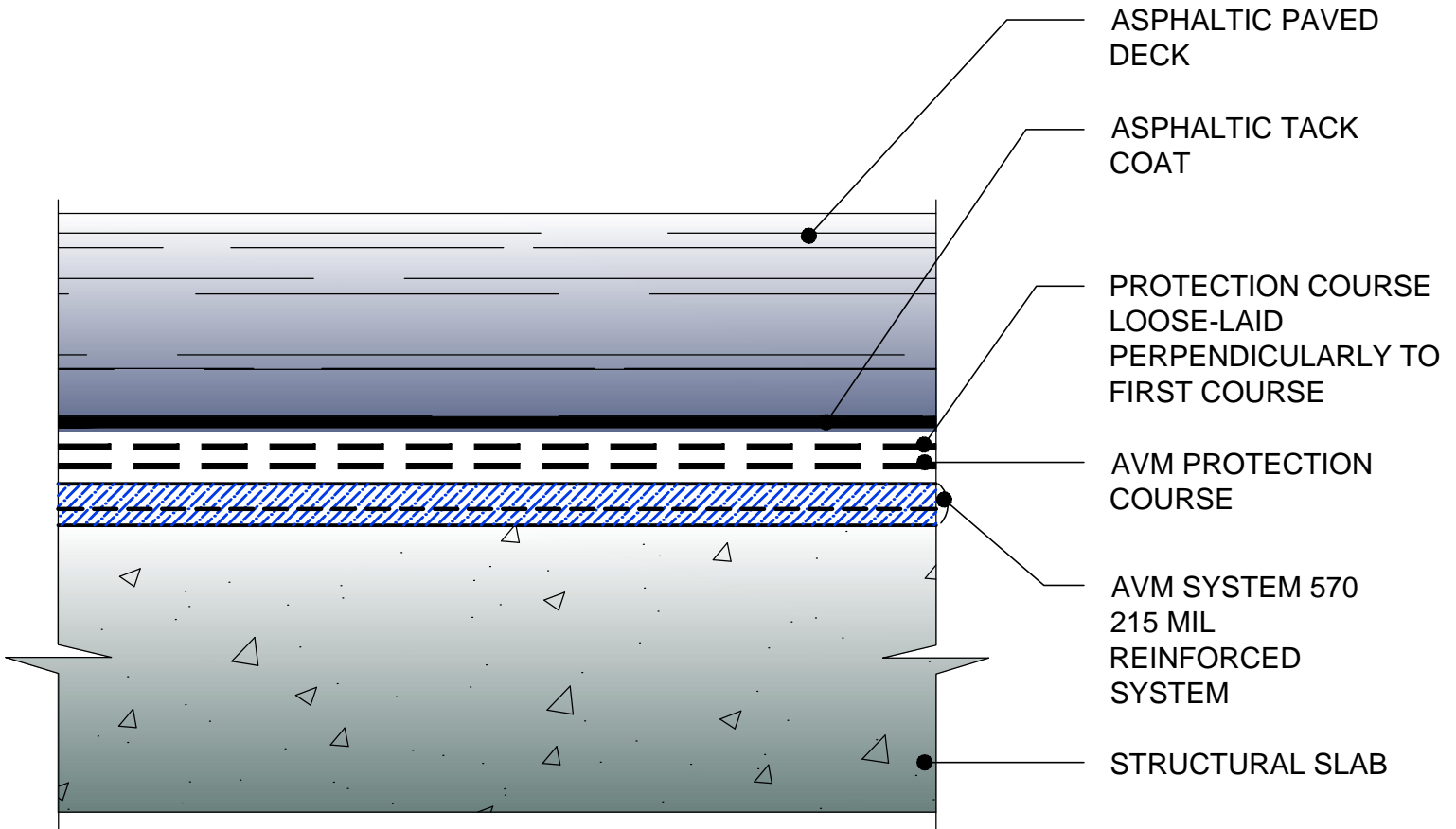
Revision Date 05/31/2016

DETAIL #: AVM-0570-0601-C

AVM SYSTEM 570

TYPICAL PLAZA

Asphalt Paved Deck
over Structural Slab
AVM Aussie Membrane 570
Hot Rubber



USE AVM PRIMER ON CONCRETE RECEIVING AVM SYSTEM 570

NOTES:

1. Aussie Membrane 570 is a Hot Rubber(Hot-Applied Asphalt-Based Composition Membrane) for Between-Slabs, Planters, Roof-Gardens and similar type Waterproofing.
2. Typical membrane is 210 mils thick with fabric reinforcement. If specified differently, contact AVM for approval.
3. Contact AVM if no drain board or protection board is specified.
4. Remove/grind/repair as necessary any protrusions, sharp edges, etc that may puncture or damage the membrane.
5. Deck-to-Wall corners must be waterproofed as shown on AVM's Details.
6. Substrates must be sloped to drains and/or edges before membrane installation. (Min 1/4" per foot) Substrates must have sufficient drains and proper drainage systems to effectively evacuate excessive water.

AVM Industries, Inc.
8245 Remmet Ave, Canoga Park, CA 91304

Quality Waterproofing Products

888.414.1041 818.888.0050
www.avmindustries.com

FILE NAME: **0570-0601-C-Asphalt-Paved-Deck-over-Structural-Slab**

Protected by Copyright - AVM Industries, Inc.

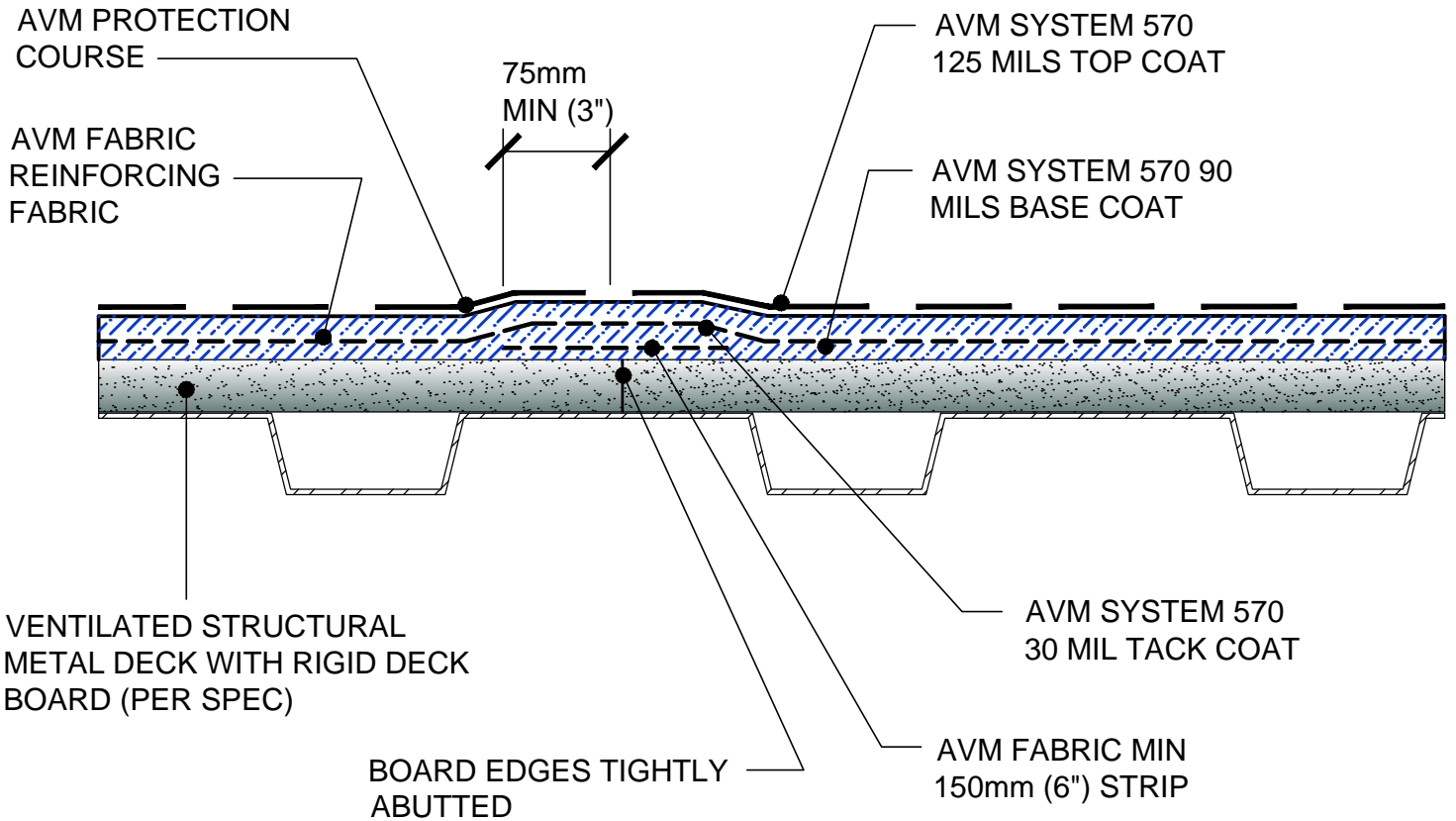
Revision Date 05/31/2016

DETAIL #: AVM-0570-2001-M

AVM SYSTEM 570

METAL DECK

Reinforced Hot Rubber over
Metal Deck with Deck Board
Neoprene Flashing at Joint Detail
AVM Aussie Membrane 570
Hot Rubber



NOTES:

1. Aussie Membrane 570 is a Hot Rubber(Hot-Applied Asphalt-Based Composition Membrane) for Between-Slabs, Planters, Roof-Gardens and similar type Waterproofing.
2. Typical membrane is 210 mils thick with fabric reinforcement. If specified differently, contact AVM for approval.
3. Contact AVM if no drain board or protection board is specified.
4. Remove/grind/repair as necessary any protrusions, sharp edges, etc that may puncture or damage the membrane.
5. Deck-to-Wall corners must be waterproofed as shown on AVM's Details.
6. Substrates must be sloped to drains and/or edges before membrane installation. (Min 1/4" per foot) Substrates must have sufficient drains and proper drainage systems to effectively evacuate excessive water.
7. Drainage board for topping Slabs up to 4" thick for pedestrian applications: Use AVM Drain Board 6000.
8. Drainage board for topping slabs over 4" thick or for vehicular applications:Use AVM Drain Board 9000.
9. Structural metal decks must be ventilated.

AVM Industries, Inc.
8245 Remmet Ave, Canoga Park, CA 91304

Quality Waterproofing Products

888.414.1041 818.888.0050
www.avmindustries.com

FILE NAME: 0570-2001-M-Reinforced-Hot-Rubber-over-Metal-Deck-With-Deck-Board-Neoprene-Flashing-at-Joint-Detail

Protected by Copyright - AVM Industries, Inc.

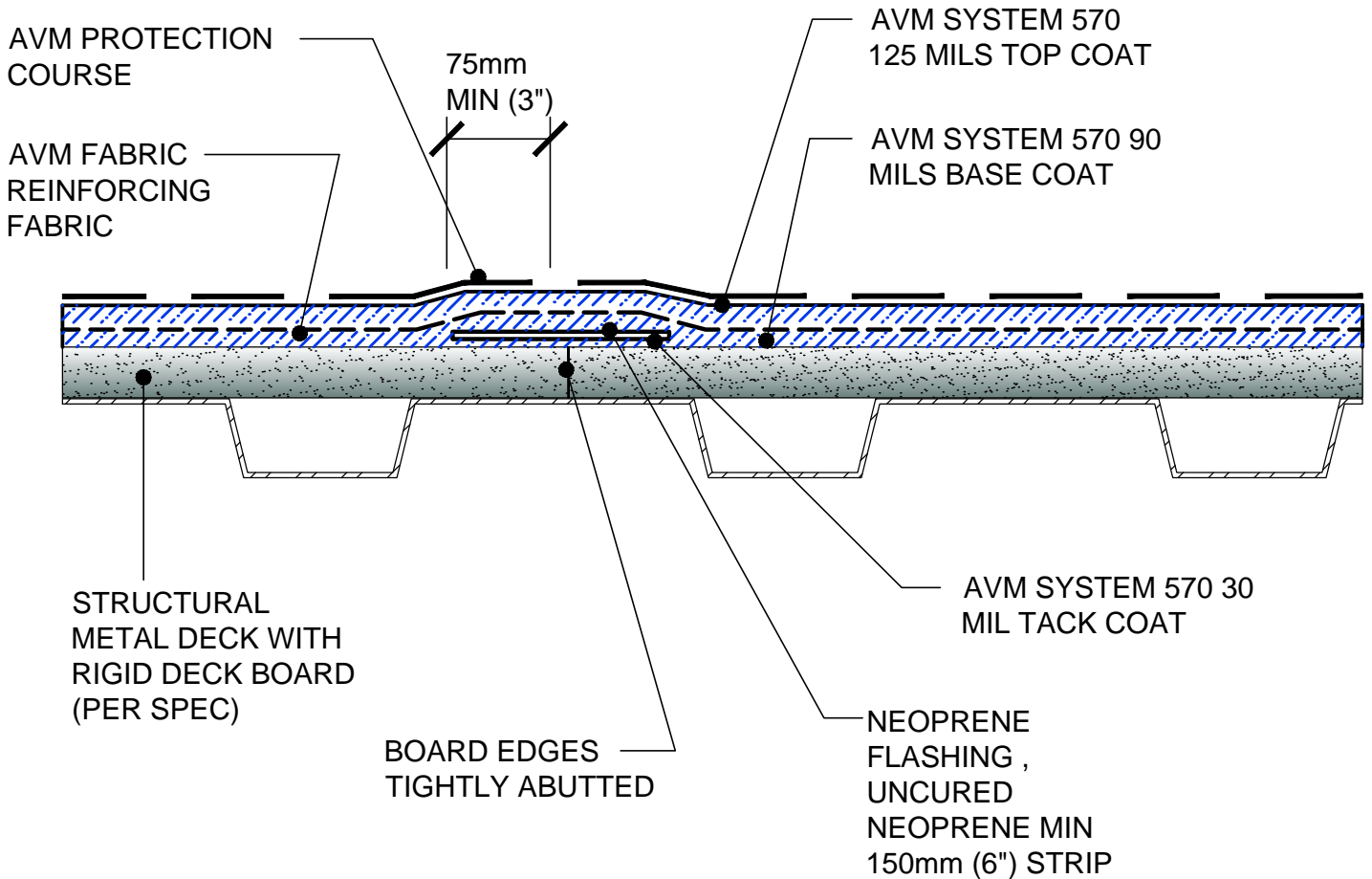
Revision Date 05/31/2016

DETAIL #: AVM-0570-2021-M

AVM SYSTEM 570

METAL DECK

Reinforced Hot Rubber
at Cold Joints
AVM Aussie Membrane 570
Hot Rubber



NOTES:

1. Aussie Membrane 570 is a Hot Rubber(Hot-Applied Asphalt-Based Composition Membrane) for Between-Slabs, Planters, Roof-Gardens and similar type Waterproofing.
2. Typical membrane is 210 mils thick with fabric reinforcement. If specified differently, contact AVM for approval.
3. Contact AVM if no drain board or protection board is specified.
4. Remove/grind/repair as necessary any protrusions, sharp edges, etc that may puncture or damage the membrane.
5. Deck-to-Wall corners must be waterproofed as shown on AVM's Details.
6. Substrates must be sloped to drains and/or edges before membrane installation. (Min 1/4" per foot) Substrates must have sufficient drains and proper drainage systems to effectively evacuate excessive water.
7. Drainage board for topping Slabs up to 4" thick for pedestrian applications: Use AVM Drain Board 6000.
8. Drainage board for topping slabs over 4" thick or for vehicular applications:Use AVM Drain Board 9000.
9. Structural metal decks must be ventilated.

AVM Industries, Inc.
8245 Remmet Ave, Canoga Park, CA 91304

Quality Waterproofing Products

888.414.1041 818.888.0050
www.avmindustries.com

FILE NAME: 0570-2021-M-Reinforced-Hot-Rubber-at-Cold-Joints

Protected by Copyright - AVM Industries, Inc.

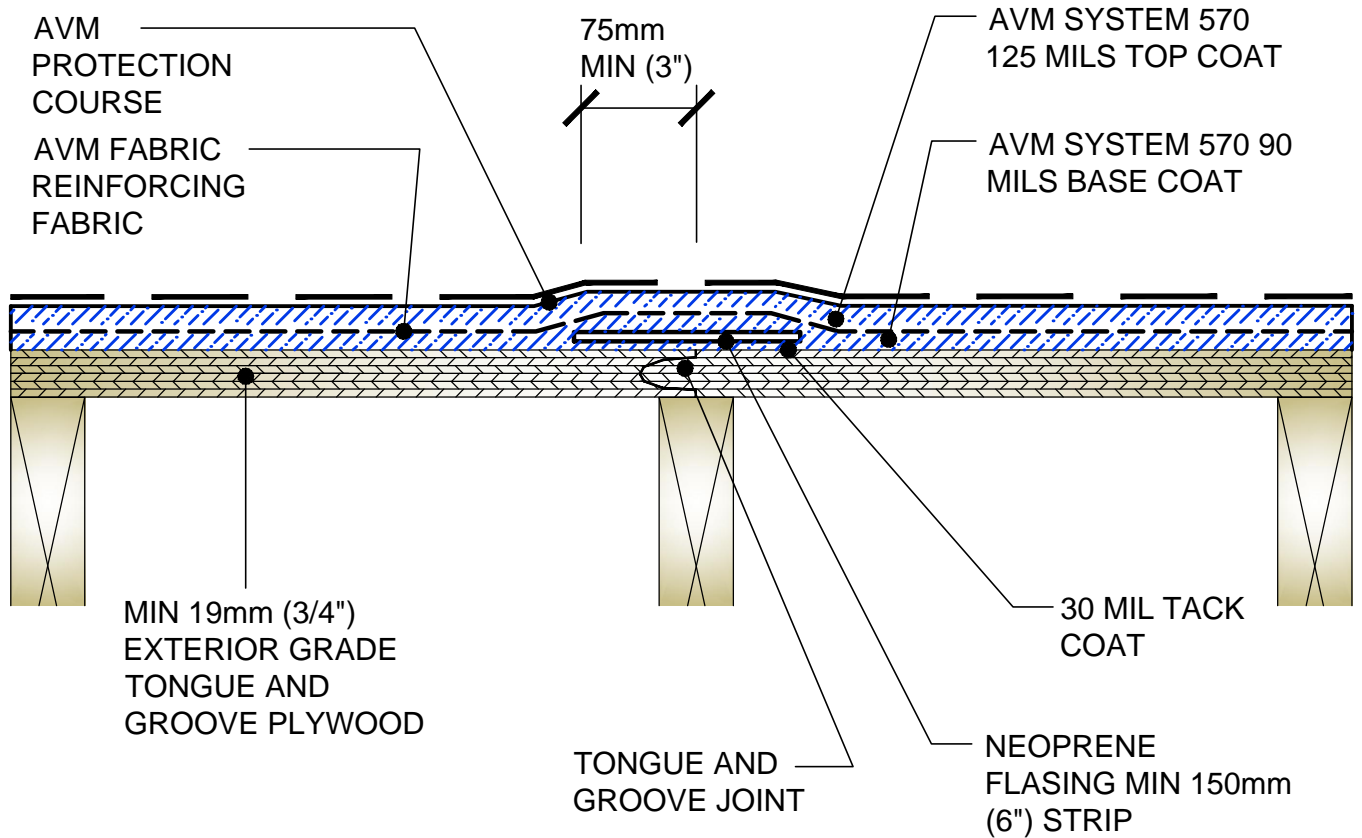
Revision Date 05/31/2016

DETAIL #: AVM-0570-2501-W

AVM SYSTEM 570

PLYWOOD DECK

**Reinforced Hot Rubber over
Tongue and Groove Plywood
Neoprene Flushing at Joint Details
AVM Aussie Membrane 570
Hot Rubber**



NOTES:

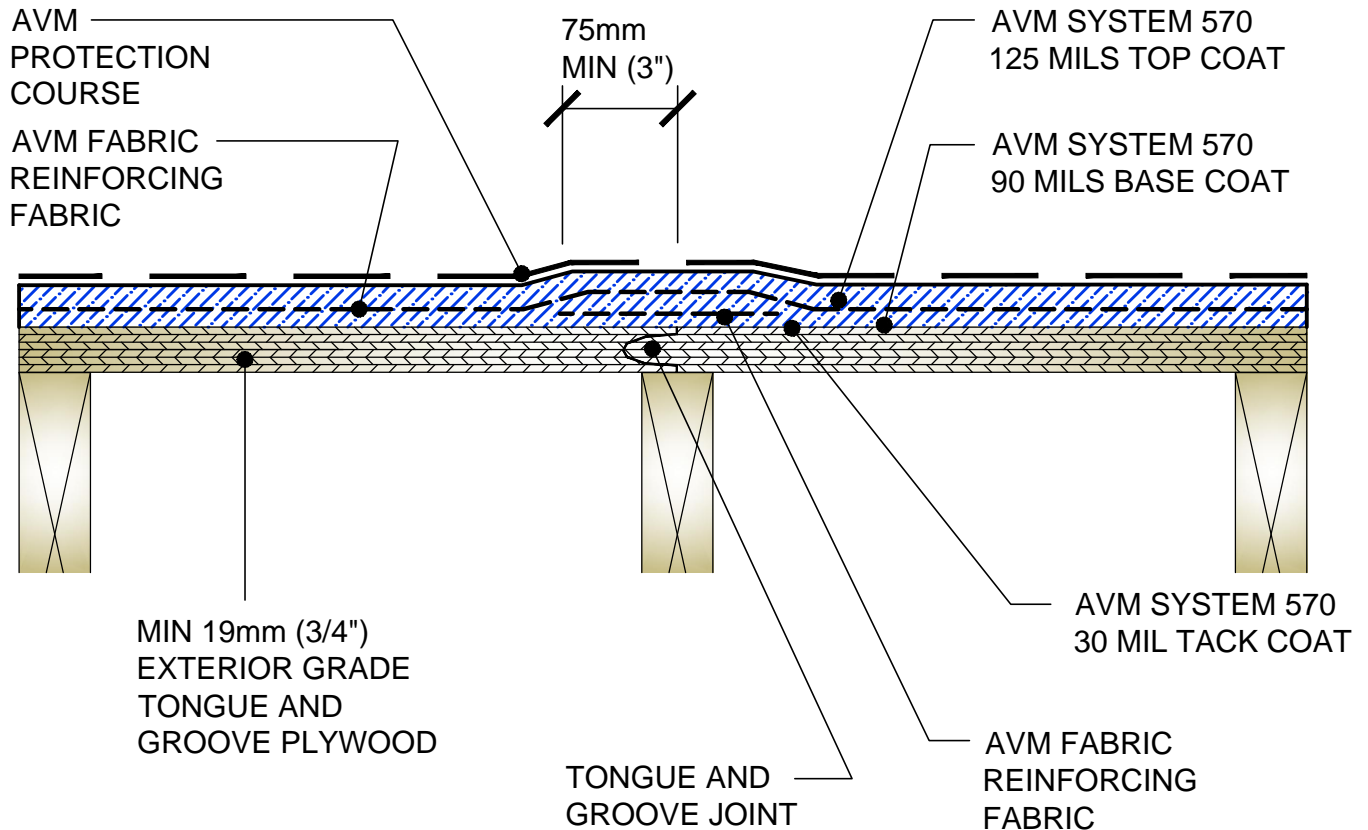
1. Aussie Membrane 570 is a Hot Rubber(Hot-Applied Asphalt-Based Composition Membrane) for Between-Slabs, Planters, Roof-Gardens and similar type Waterproofing.
2. Typical membrane is 210 mils thick with fabric reinforcement. If specified differently, contact AVM for approval.
3. Contact AVM if no drain board or protection board is specified.
4. Remove/grind/repair as necessary any protrusions, sharp edges, etc that may puncture or damage the membrane.
5. Deck-to-Wall corners must be waterproofed as shown on AVM's Details.
6. Substrates must be sloped to drains and/or edges before membrane installation. (Min 1/4" per foot) Substrates must have sufficient drains and proper drainage systems to effectively evacuate excessive water.
7. If water is to drain over the edge, then edge metals MUST have sufficient weep holes (at least every 6") and must be strong enough (thick enough) to act as a concrete form.
8. Many edge details are possible. All must allow for proper water evacuation. (None should trap water) Consult AVM for details.
9. Make sure all nails are flush with the plywood surface or slightly sunken in below it. (Nails protruding above the plywood surface may puncture the membrane)
10. Reinforce the Aussie Membrane 570 at all plywood joints, cracks, metal transitions, penetrations, drains, etc.

DETAIL #: AVM-0570-2521-W

AVM SYSTEM 570

PLYWOOD DECK

**Reinforced Hot Rubber over
Tongue and Groove Plywood
Fabric Reinforcement at Joint Detail
AVM Aussie Membrane 570
Hot Rubber**



NOTES:

1. Aussie Membrane 570 is a Hot Rubber(Hot-Applied Asphalt-Based Composition Membrane) for Between-Slabs, Planters, Roof-Gardens and similar type Waterproofing.
2. Typical membrane is 210 mils thick with fabric reinforcement. If specified differently, contact AVM for approval.
3. Contact AVM if no drain board or protection board is specified.
4. Remove/grind/repair as necessary any protrusions, sharp edges, etc that may puncture or damage the membrane.
5. Deck-to-Wall corners must be waterproofed as shown on AVM's Details.
6. Substrates must be sloped to drains and/or edges before membrane installation. (Min 1/4" per foot) Substrates must have sufficient drains and proper drainage systems to effectively evacuate excessive water.
7. If water is to drain over the edge, then edge metals MUST have sufficient weep holes (at least every 6") and must be strong enough (thick enough) to act as a concrete form.
8. Many edge details are possible. All must allow for proper water evacuation. (None should trap water) Consult AVM for details.
9. Make sure all nails are flush with the plywood surface or slightly sunken in below it. (Nails protruding above the plywood surface may puncture the membrane)
10. Reinforce the Aussie Membrane 570 at all plywood joints, cracks, metal transitions, penetrations, drains, etc.

AVM Industries, Inc.
8245 Remmet Ave, Canoga Park, CA 91304

Quality Waterproofing Products

888.414.1041 818.888.0050
www.avmindustries.com

FILE NAME: **0570-2521-W/Reinforced-Hot-Rubber-over-Tongue-and-Groove-Plywood-Fabric-Reinforcement-at-Joint-Detail**

Protected by Copyright - AVM Industries, Inc.

Revision Date 05/31/2016

DETAIL #: AVM-0570-4001

AVM SYSTEM 570

PLAZA DECK

Deck to Wall Inside Corner Detail
AVM Aussie Membrane 570
Hot Rubber



AVM SYSTEM
570 30 MIL
TACK COAT

WALL

NEOPRENE
FLASHING

PLAZA DECK

SETTING BED
FOR PAVERS

WALL

AVM SYSTEM
570 30 MIL
TACK COAT

NEOPRENE
FLASHING

PLAZA DECK

STEP 1

APPLY TACK COAT
AND INSTALL FIRST
LAYER OF FLASHING
AS SHOWN

STEP 2

APPLY ANOTHER TACK
COAT AND INSTALL
SECOND LAYER OF
FLASHING AS SHOWN

STEP 3

COMPLETELY COAT NEOPRENE FLASHING WITH AVM SYSTEM 570
IMMEDIATELY AFTER INSTALLATION

AVM Industries, Inc.
8245 Remmet Ave, Canoga Park, CA 91304

Quality Waterproofing Products

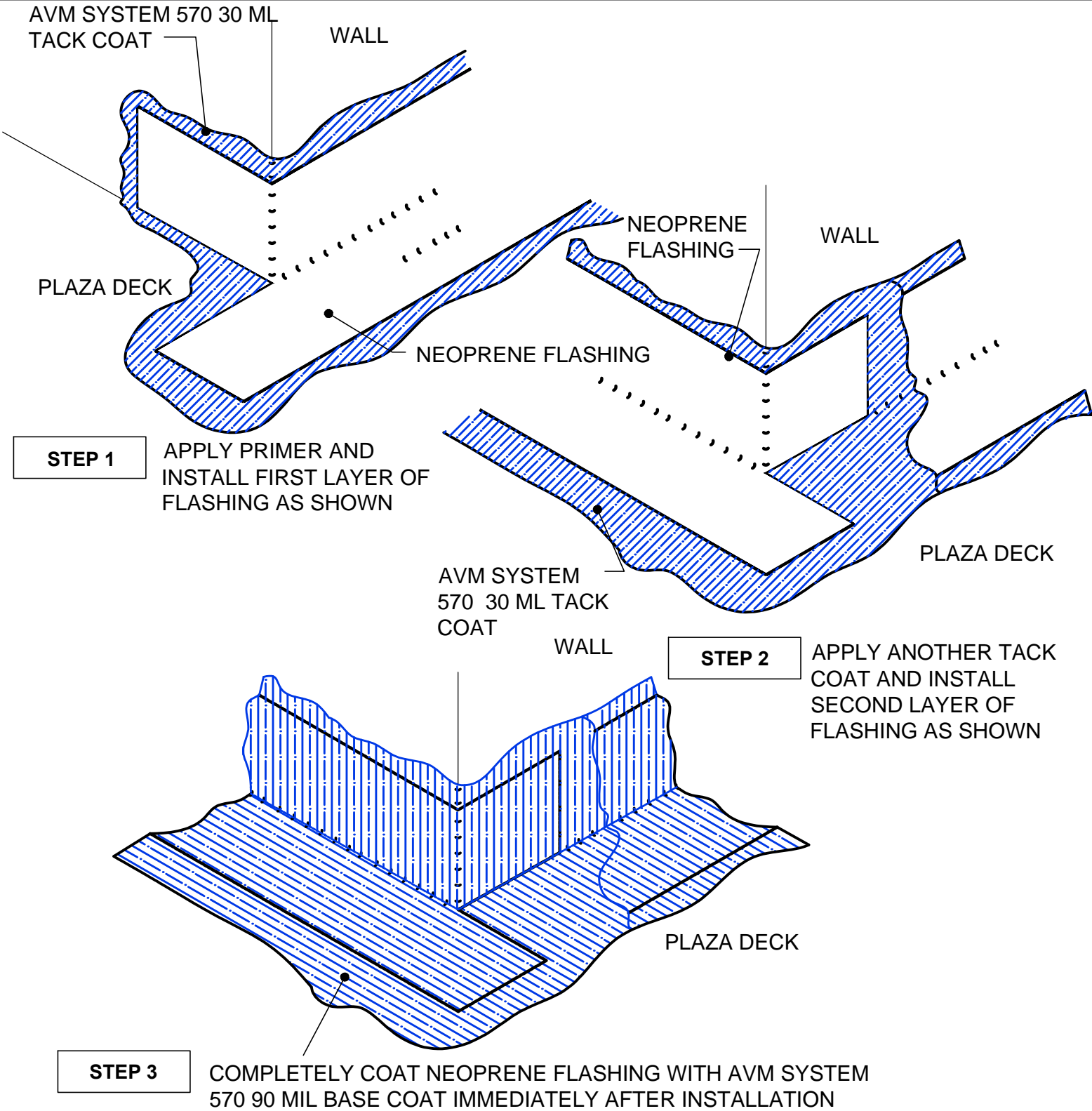
888.414.1041 818.888.0050
www.avmindustries.com

FILE NAME: 0570-4001-Deck-to-Wall-Inside-Corner-Detail
Protected by Copyright - AVM Industries, Inc.

Revision Date 05/31/2016

DETAIL #: AVM-0570-4011
AVM SYSTEM 570
PLAZA DECK

Deck to Wall Outside Corner Detail
AVM Aussie Membrane 570
Hot Rubber

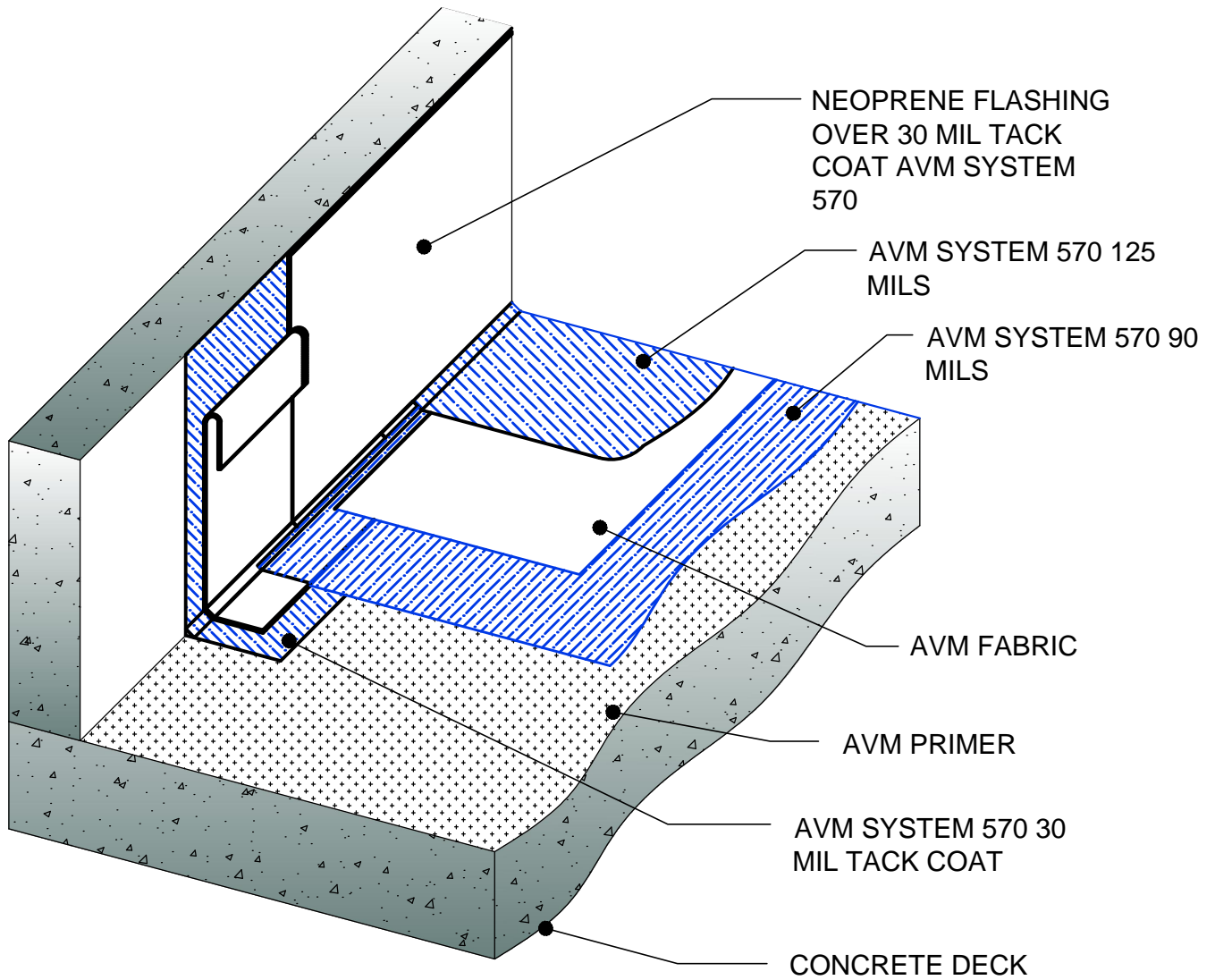


DETAIL #: AVM-0570-4051

AVM SYSTEM 570

CONCRETE DECK

Fabric Reinforced System and
Neoprene flashing Details
AVM Aussie Membrane 570
Hot Rubber

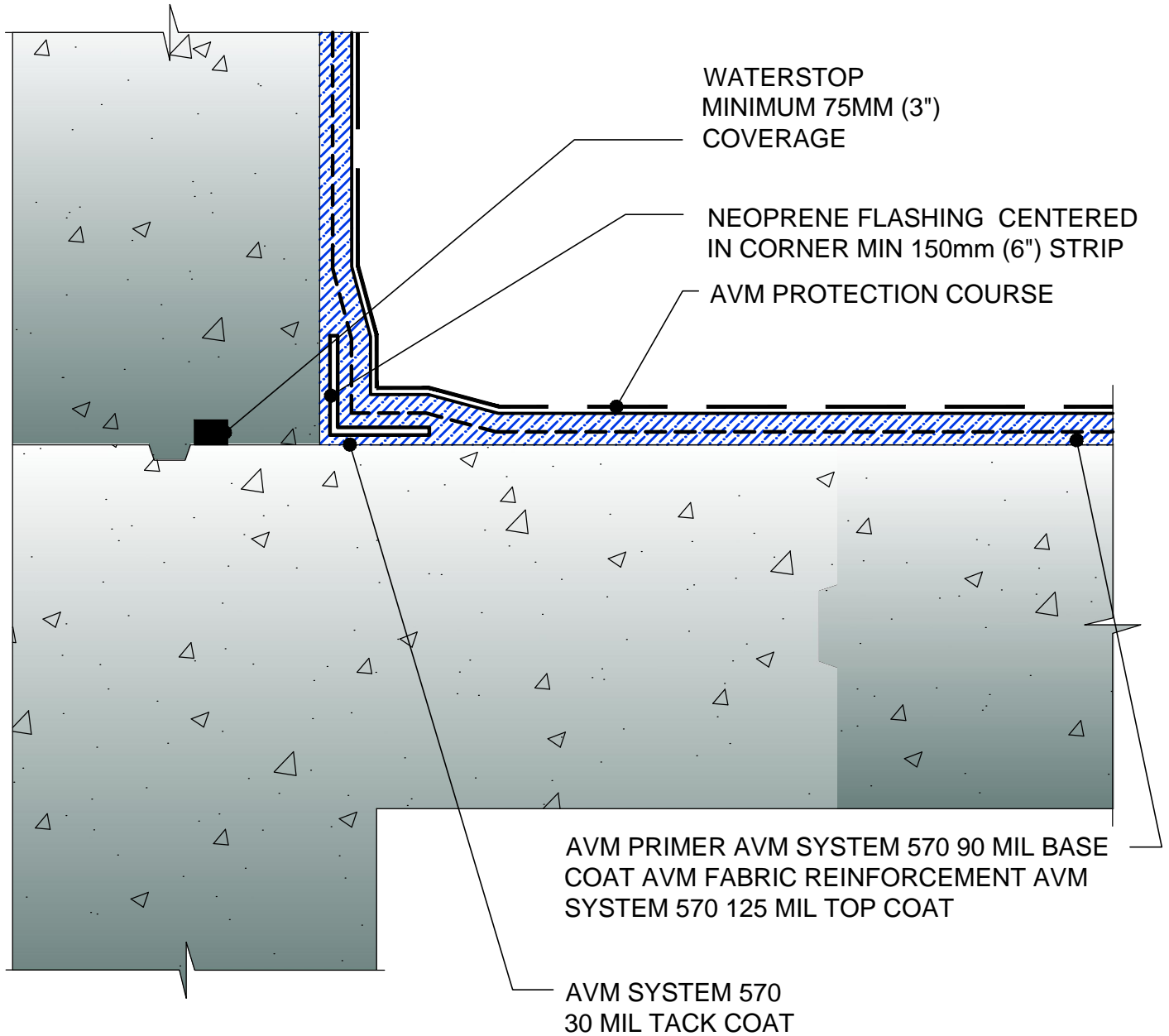


DETAIL #: AVM-0570-4201

AVM SYSTEM 570

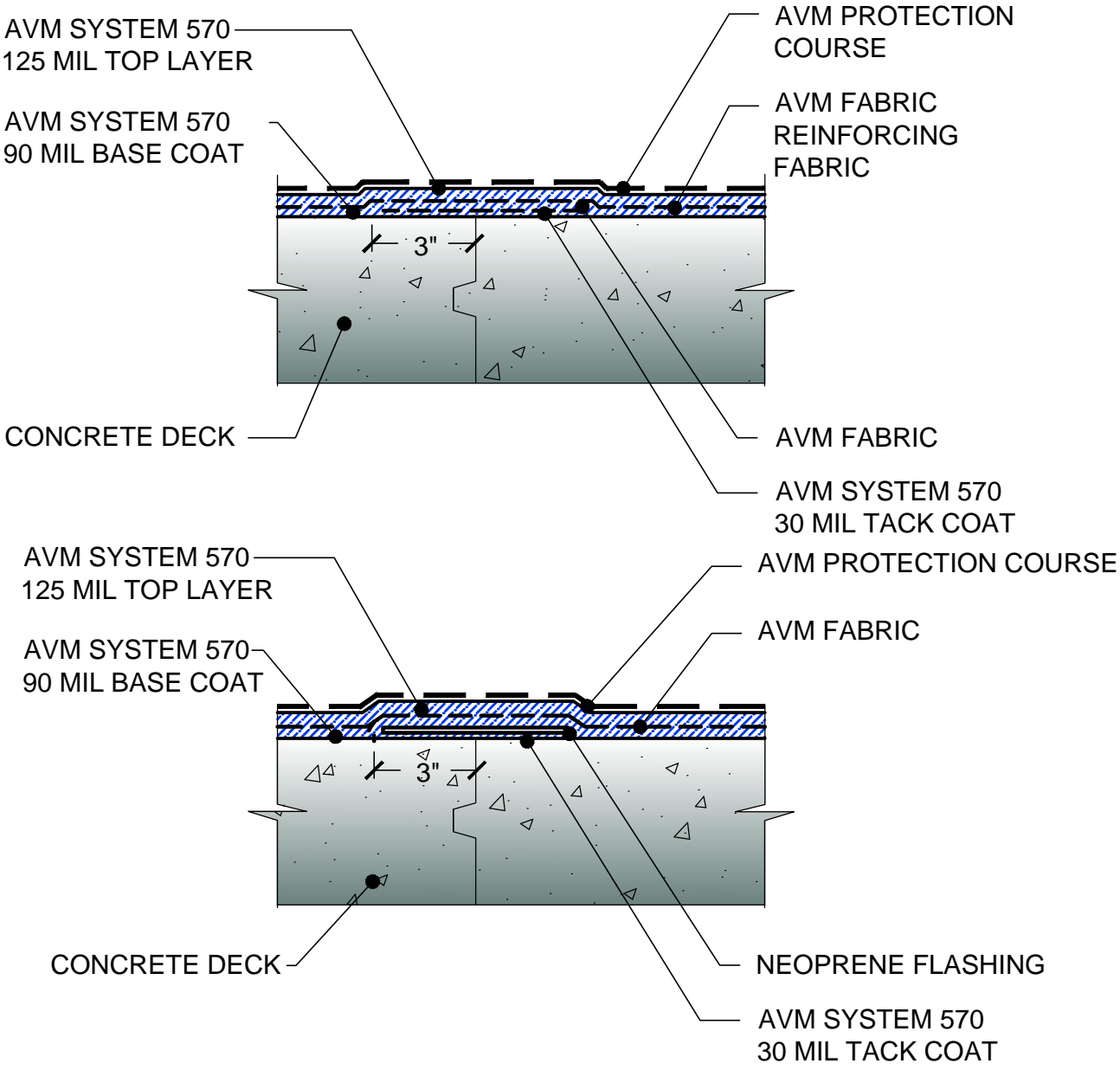
CONCRETE DECK

Reinforced Hot Rubber
at Cold Joints
AVM Membrane 570
Hot Rubber



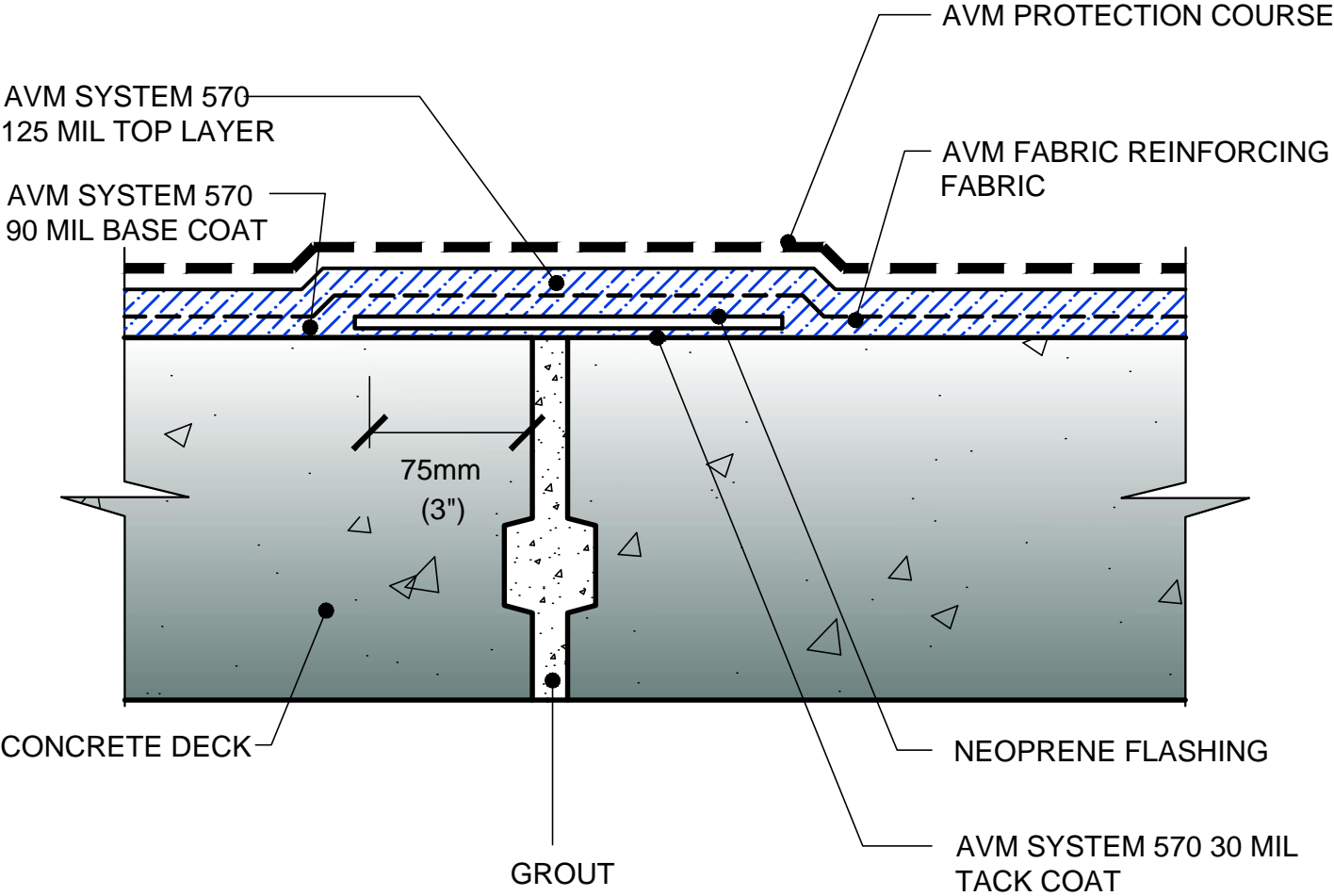
DETAIL #: AVM-0570-4220
 AVM SYSTEM 570
CONCRETE DECK

Treatment of Construction Joints
 AVM Aussie Membrane 570
 Hot Rubber



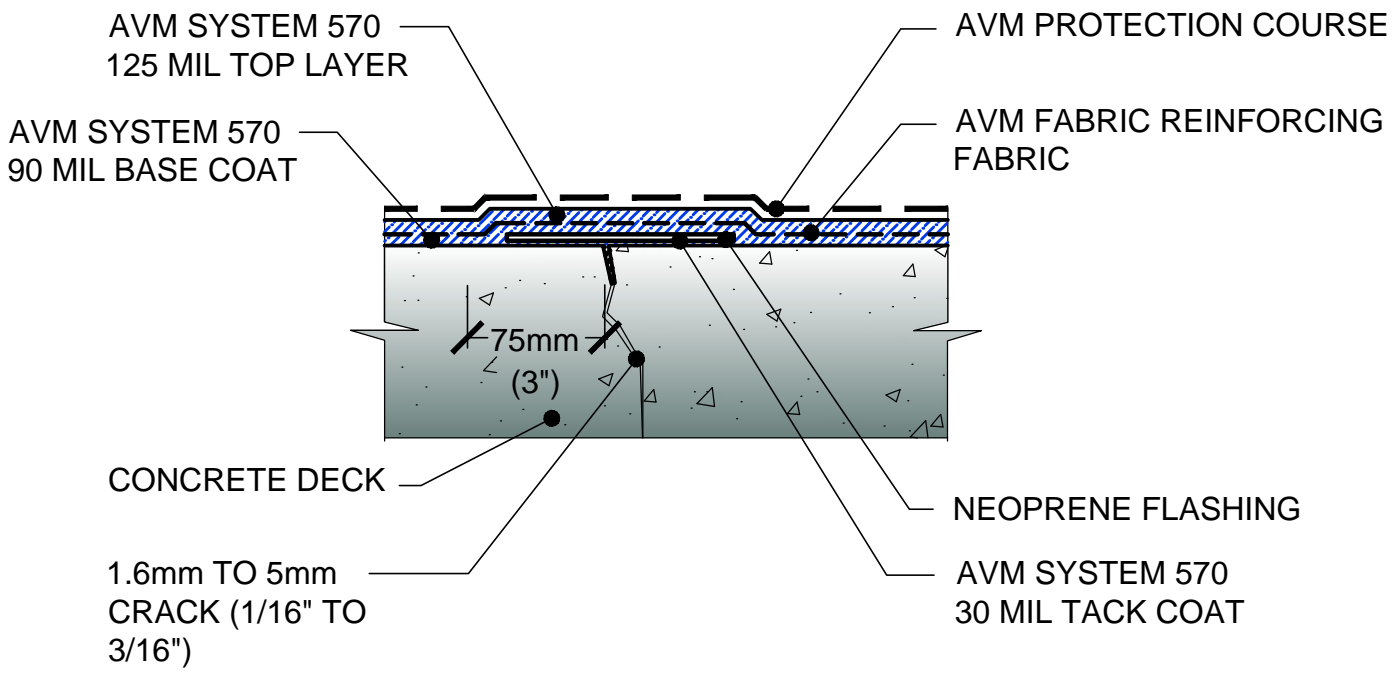
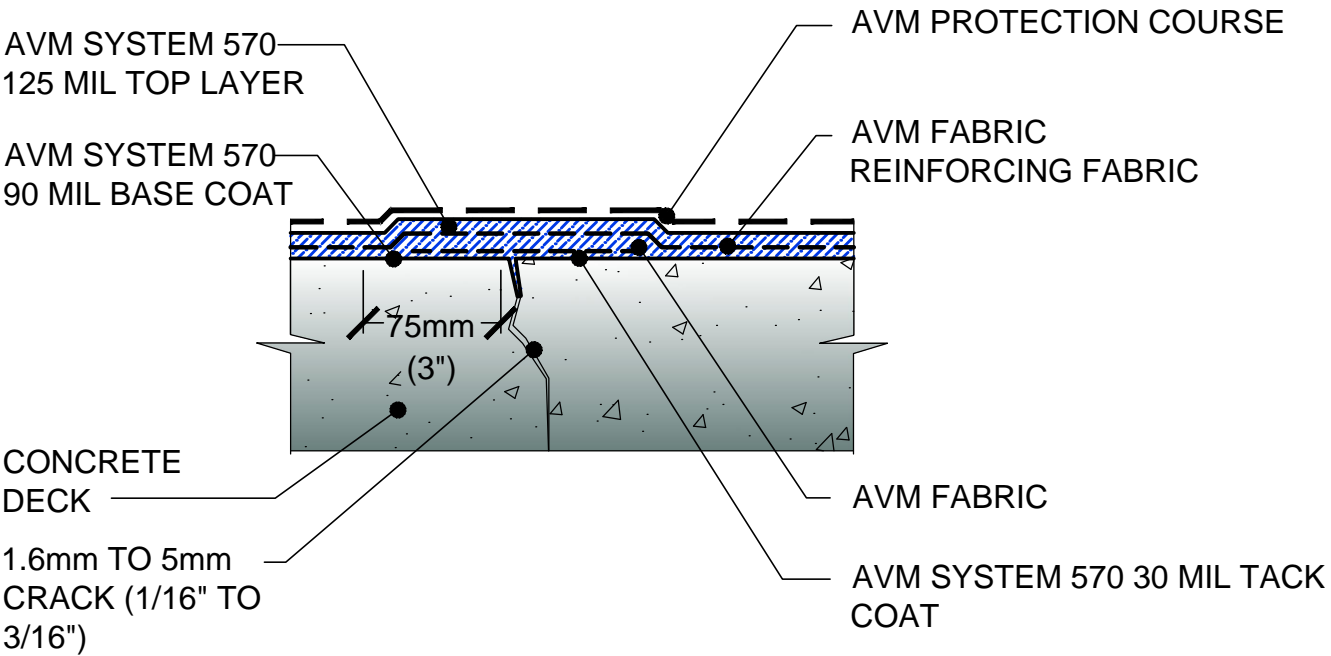
DETAIL #: AVM-0570-4230
AVM SYSTEM 570
CONCRETE DECK

Precast Joint Treatment
AVM Aussie Membrane 570
Hot Rubber



DETAIL #: AVM-0570-4401
 AVM SYSTEM 570
CONCRETE DECK

Treatment of Cracks - 1/16" to 3/16"
 AVM Aussie Membrane 570
 Hot Rubber

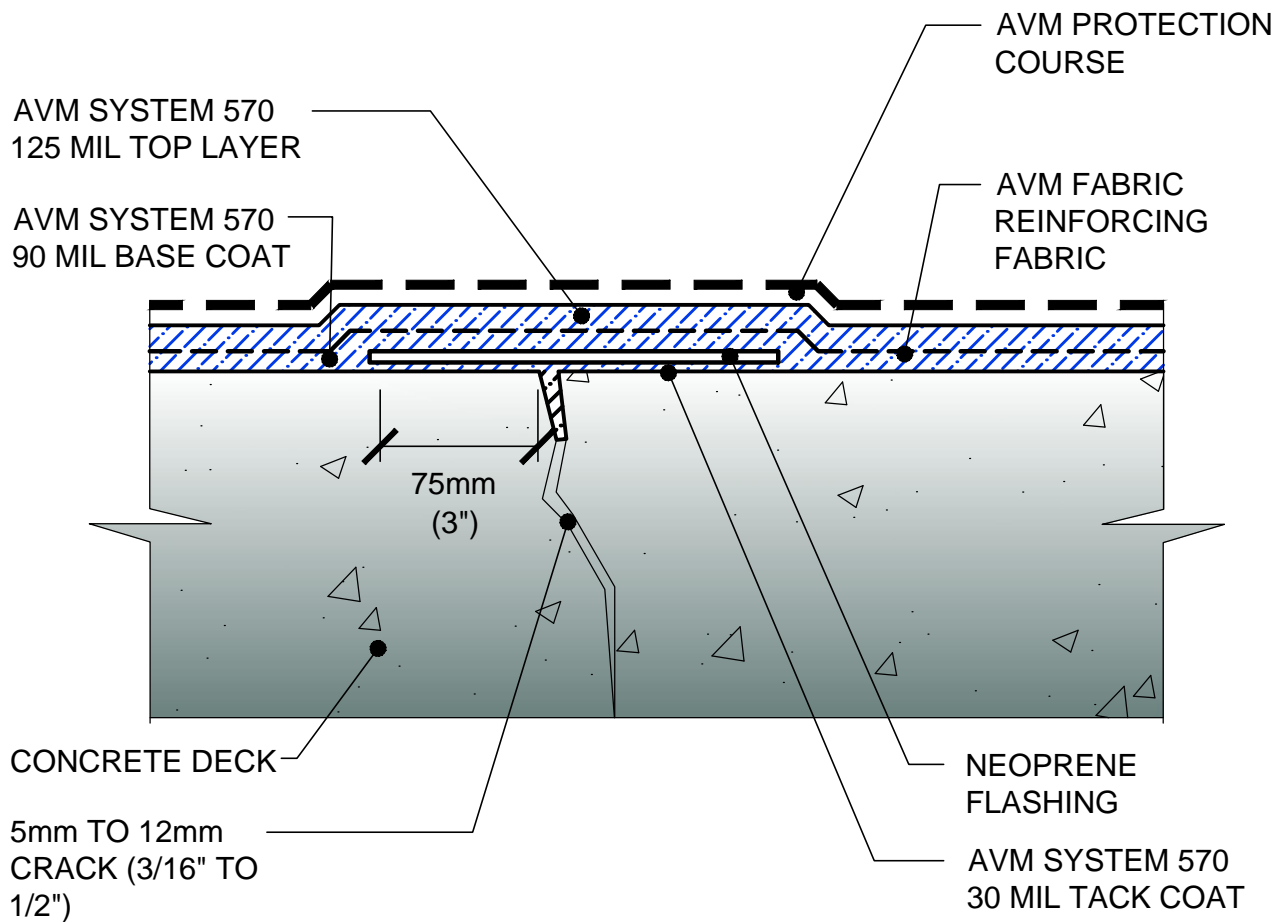


DETAIL #: AVM-0570-4420

AVM SYSTEM 570

CONCRETE DECK

Treatment of Cracks - 3/16" - 1/2"
AVM Aussie Membrane 570
Hot Rubber

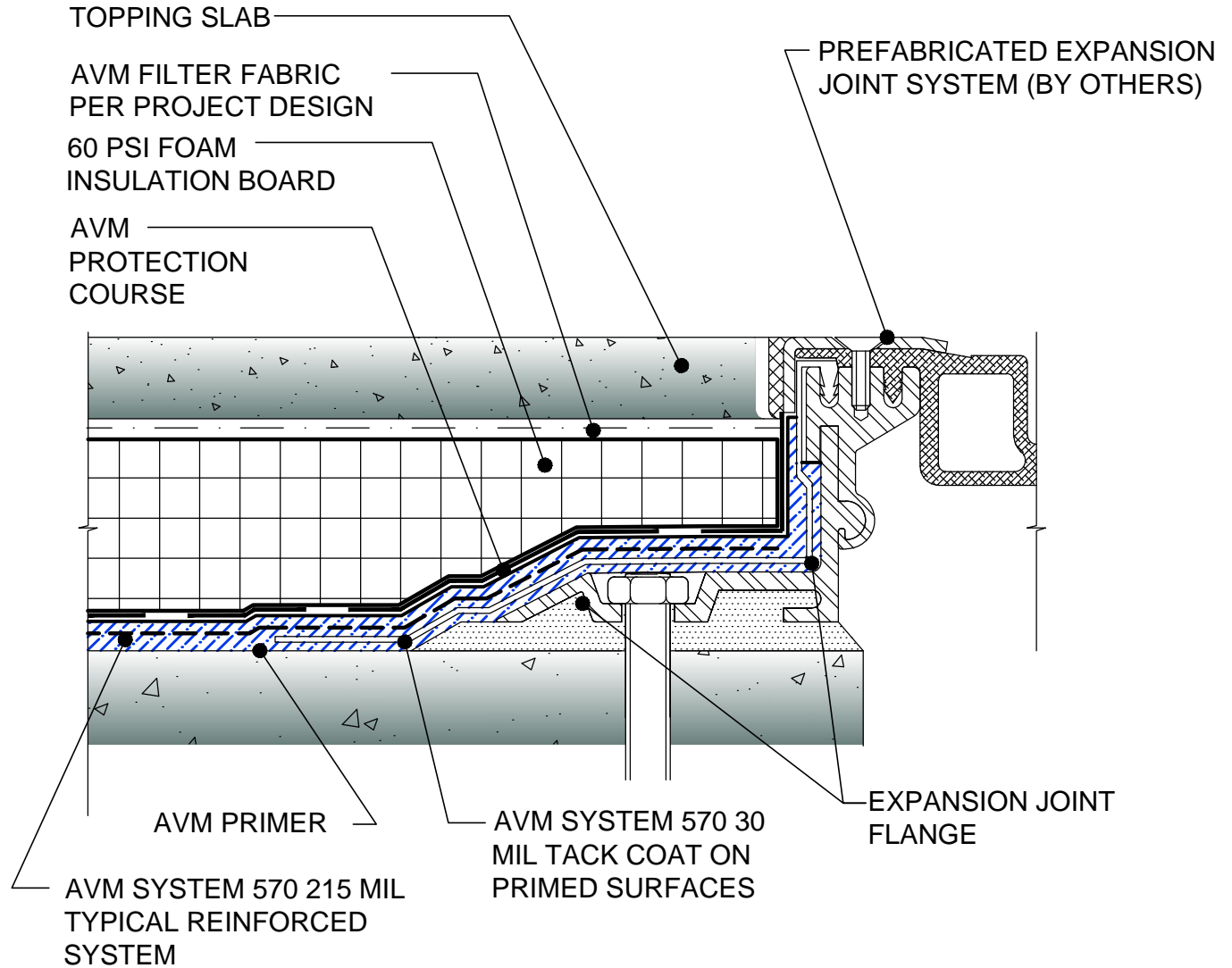


DETAIL #: AVM-0570-4601

AVM SYSTEM 570

CONCRETE DECK

Mid-Deck to Expansion Joint
Topping Slab
AVM Aussie Membrane 570
Hot Rubber



NOTE: AVM PRODUCTS ARE NOT DESIGNED TO WATERPROOF EXPANSION JOINTS. EXPANSION JOINTS REQUIRE A PROPER EXPANSION JOINT MATERIAL MANUFACTURED BY OTHERS. AVM PRODUCTS CAN BE INSTALLED OVER EXPANSION JOINT MATERIALS AS ILLUSTRATED ABOVE. CHECK WITH THE EXPANSION JOINT PRODUCT MANUFACTURER FOR MATERIAL COMPATIBILITY.

**NOTE: CONSULT WITH THE EXPANSION JOINT
MANUFACTURER FOR SPECIFIC INFORMATION ON THEIR
PRODUCT AND INSTALLATION PROCEDURES**

DETAIL #: AVM-0570-4651

AVM SYSTEM 570

CONCRETE DECK

Mid-Deck to Expansion Joint- Pavers
AVM Aussie Membrane 570
Hot Rubber

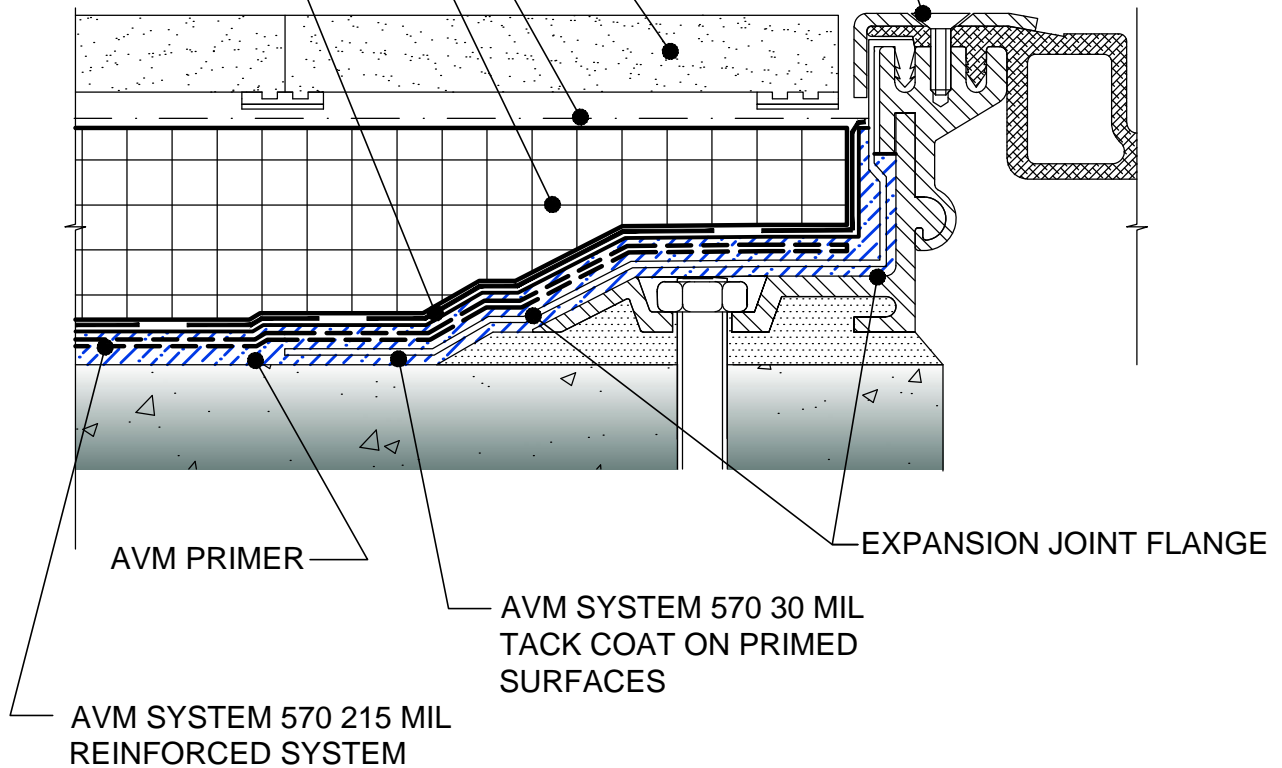


PEDESTAL AND PAVER
SYSTEM

AVM FILTER FABRIC PER
PROJECT DESIGN
60 PSI FOAM INSULATION
BOARD BOARD

AVM
PROTECTION
COURSE

PREFABRICATED
EXPANSION JOINT SYSTEM
(BY OTHERS)



NOTE: AVM PRODUCTS ARE NOT DESIGNED TO WATERPROOF EXPANSION JOINTS. EXPANSION JOINTS REQUIRE A PROPER EXPANSION JOINT MATERIAL MANUFACTURED BY OTHERS. AVM PRODUCTS CAN BE INSTALLED OVER EXPANSION JOINT MATERIALS AS ILLUSTRATED ABOVE. CHECK WITH THE EXPANSION JOINT PRODUCT MANUFACTURER FOR MATERIAL COMPATIBILITY.

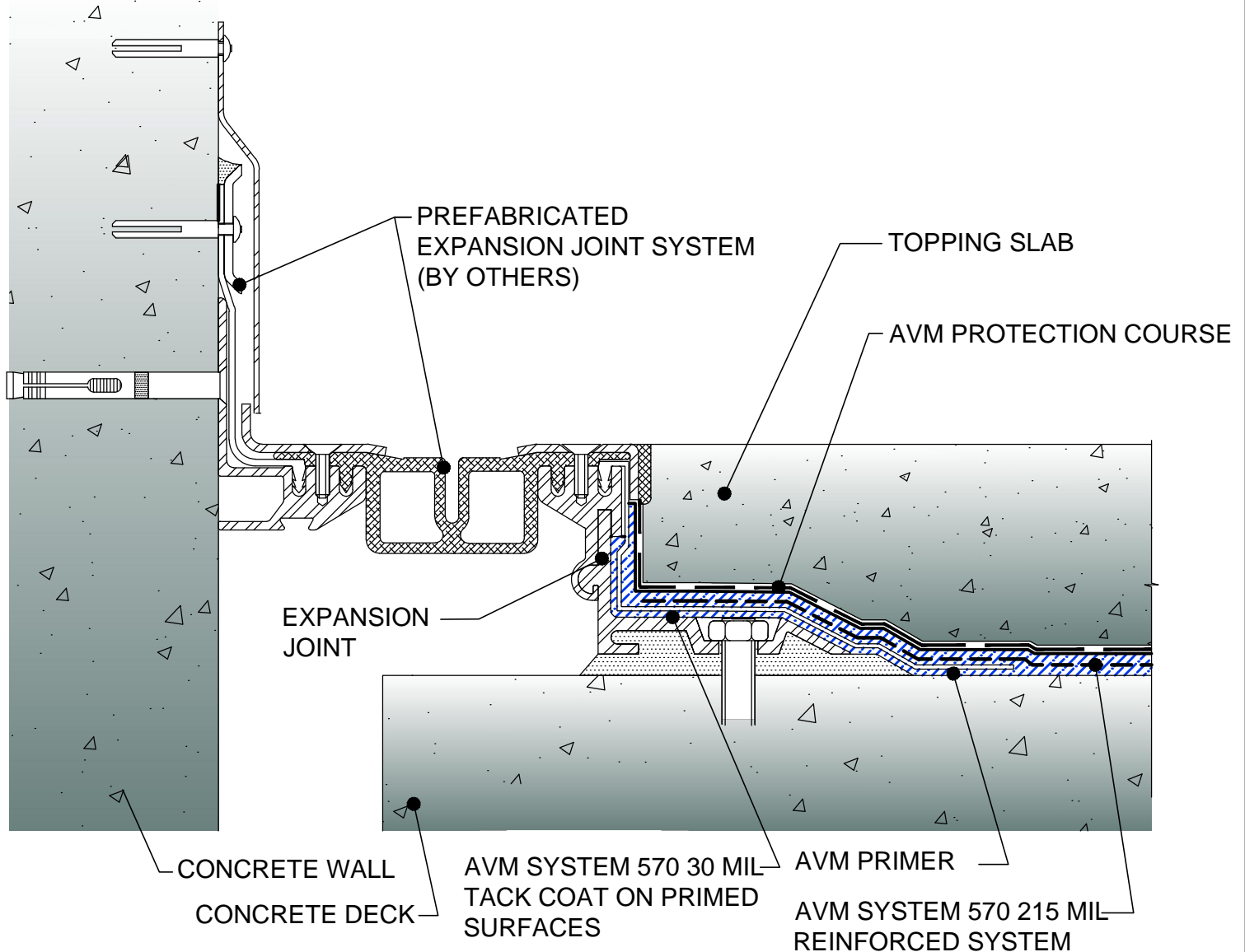
**NOTE: CONSULT WITH THE EXPANSION JOINT
MANUFACTURER FOR SPECIFIC INFORMATION ON THEIR
PRODUCT AND INSTALLATION PROCEDURES**

DETAIL #: AVM-0570-4701

AVM SYSTEM 570

CONCRETE DECK

Deck to Wall Expansion Joint
AVM Aussie Membrane 570
Hot Rubber



NOTE: AVM PRODUCTS ARE NOT DESIGNED TO WATERPROOF EXPANSION JOINTS. EXPANSION JOINTS REQUIRE A PROPER EXPANSION JOINT MATERIAL MANUFACTURED BY OTHERS. AVM PRODUCTS CAN BE INSTALLED OVER EXPANSION JOINT MATERIALS AS ILLUSTRATED ABOVE. CHECK WITH THE EXPANSION JOINT PRODUCT MANUFACTURER FOR MATERIAL COMPATIBILITY.

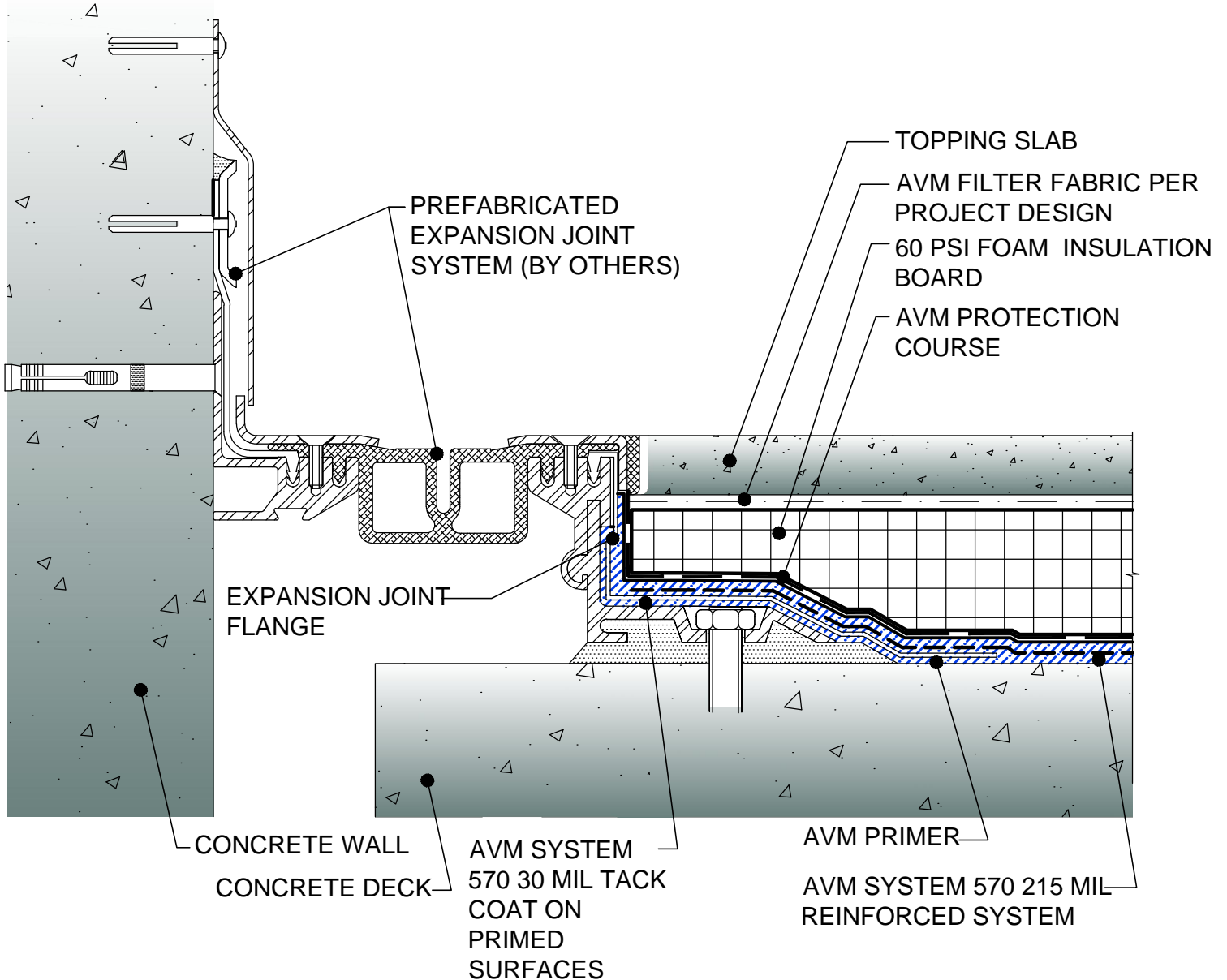
NOTE: CONSULT WITH THE EXPANSION JOINT MANUFACTURER FOR SPECIFIC INFORMATION ON THEIR PRODUCT AND INSTALLATION PROCEDURES

DETAIL #: AVM-0570-4751

AVM SYSTEM 570

CONCRETE DECK

Deck to Wall Expansion Joint
with Insulation
AVM Aussie Membrane 570
Hot Rubber

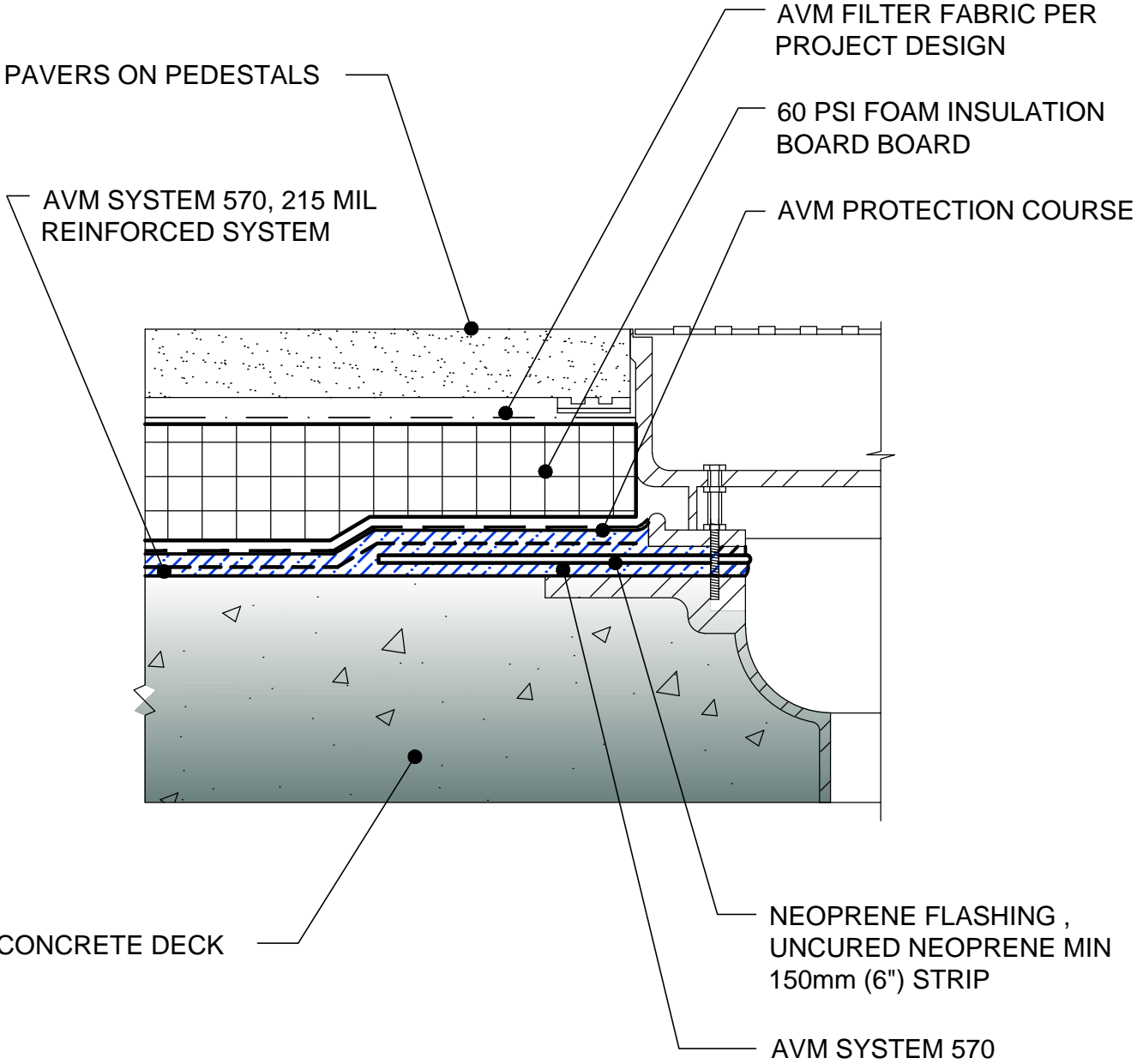


NOTE: AVM PRODUCTS ARE NOT DESIGNED TO WATERPROOF EXPANSION JOINTS. EXPANSION JOINTS REQUIRE A PROPER EXPANSION JOINT MATERIAL MANUFACTURED BY OTHERS. AVM PRODUCTS CAN BE INSTALLED OVER EXPANSION JOINT MATERIALS AS ILLUSTRATED ABOVE. CHECK WITH THE EXPANSION JOINT PRODUCT MANUFACTURER FOR MATERIAL COMPATIBILITY.

NOTE: CONSULT WITH THE EXPANSION JOINT MANUFACTURER FOR SPECIFIC INFORMATION ON THEIR PRODUCT AND INSTALLATION PROCEDURES

DETAIL #: AVM-0570-6001
AVM SYSTEM 570
CONCRETE DECK

Drain Detail (Typical)
AVM Aussie Membrane 570
Hot Rubber

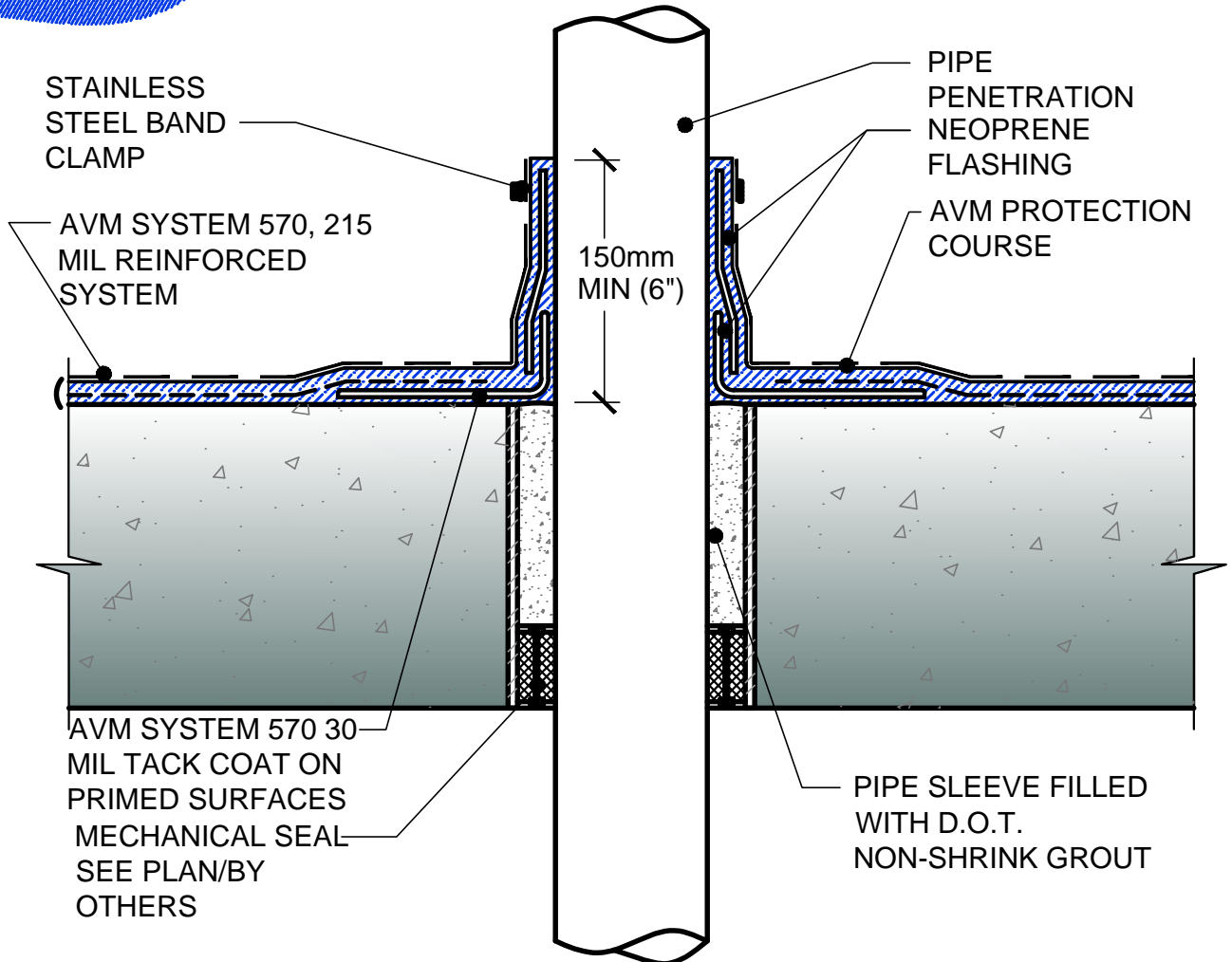
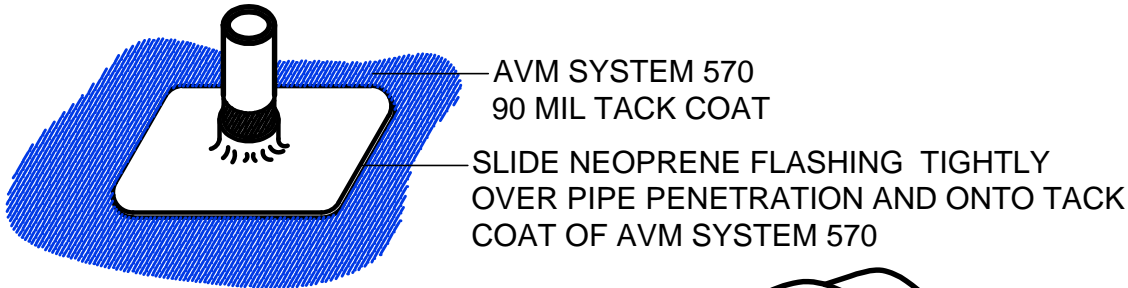


DETAIL #: AVM-0570-6201

AVM SYSTEM 570

CONCRETE DECK

Vertical or Horizontal Pipe Penetrations
AVM Aussie Membrane 570
Hot Rubber



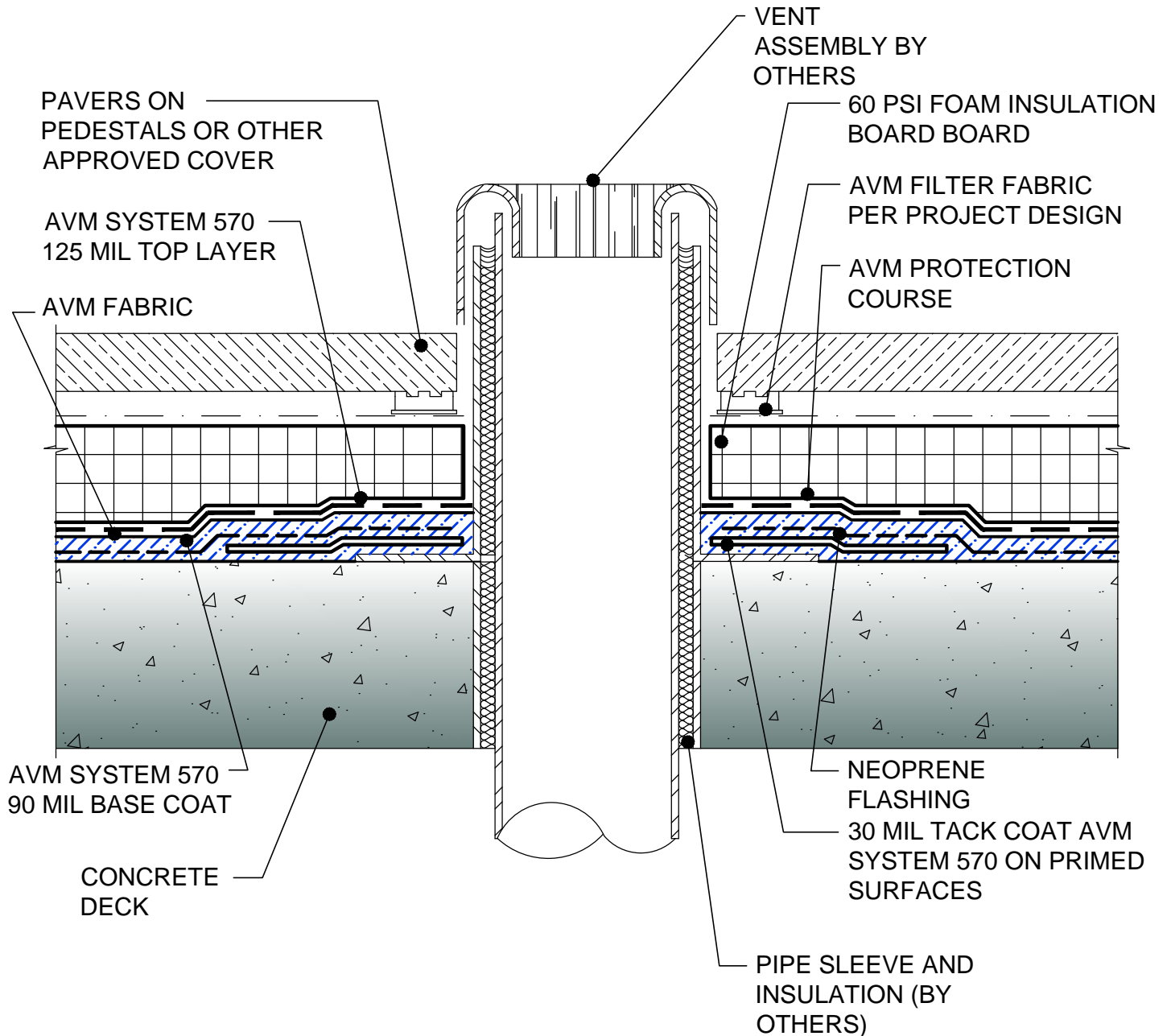
NOTE: CLEAN ALL PENETRATIONS OF DIRT, RUST AND OIL. ROUGHEN SURFACE OF PIPE BEFORE APPLYING PRIMER. VERIFY PENETRATION IS PROPERLY SECURED TO DECK OR WALL TO AVOID MOVEMENT OF PIPE.

DETAIL #: AVM-0570-6301

AVM SYSTEM 570

CONCRETE DECK

Vent Detail
AVM Aussie Membrane 570
Hot Rubber



DETAIL #: AVM-0570-6401

AVM SYSTEM 570

FOUNDATION WALL

Termination at Grade
AVM Aussie Membrane 570
Hot Rubber

