



Elasto Fiberdeck® 100

Roof and Walking Deck System

ICC ESR-2125
L.A. RR#: 25430

Section 071800 / 071813
Fluid Applied Waterproofing

Product Name

Elasto Fiberdeck® 100

Manufactured by

AVM Industries, Inc.
8245 Remmet Ave, Canoga Park, CA 91304
888.414.1041 818.888.0050
www.avmindustries.com

Product Description

The Elasto Fiberdeck® 100 is a traffic bearing, roof and walking deck waterproofing system. The Elasto Fiberdeck® 100 system has a class A roofing classification and a 1 hour fire rating. (When installed per ICC ESR-2125)

Where to Use

On new or existing concrete or plywood decks and many other substrates. (For other substrates, consult with AVM Industries prior to installation) The Elasto Fiberdeck® 100 system provides exceptional protection against the elements and heavy pedestrian traffic. The Elasto Fiberdeck® 100 is suitable for both residential and commercial structures and is commonly installed on sundecks, balconies, walkways, stairs, courtyards and many other areas.

Warranty

- The Elasto Fiberdeck® system components are manufactured to the strictest quality control standards. The manufacturing and quality control procedures are monitored by an independent lab certified to conduct such inspections by ICC ES.
- AVM Industries will warranty the installed system for a period of five (5) years. A ten (10) year warranty is available. For details, consult your distributor or approved AVM Industries applicator. Complete warranty information is available upon request.

Delivery, Storage, and Handling

- Delivery of all the Elasto Fiberdeck® 100 system materials to the job site must be in their original sealed containers and bags, with manufacturer's name and label intact.
- Handle and store containers and bags in accordance with printed instructions.
- Store at temperatures between 50°F and 90°F. Do not store materials in direct sunlight or where they may be damaged by water or rain. Bags must be kept dry!
- Keep all materials out of the reach of children.
- If irritation occurs during use, liberally flush affected areas with water. If irritation continues, see a physician immediately.



Project Conditions

- Do not apply materials at temperatures below 50°F, or if precipitation is imminent, or above 90°F if applying in direct sun light.
- Provide adequate ventilation during installation.
- Warn personnel against hazards of materials to skin and eyes.
- Protect adjacent surfaces which could be damaged during the application.
- This system must not be used to cover Expansion Joints.

System Application

Install the Elasto Fiberdeck® 100 in accordance with its Installation Instructions.

Substrates

Plywood must be min 5/8" thick, exterior grade, attached to framing spaced max 16" on center and properly blocked, supported and fastened.

Concrete decks must comply to code and be min 2000 PSI after 28 days curing time.

Preparation of Substrates

The substrate surfaces must be structurally sound, clean, dry, free of contamination, and prepared according to the Installation Instructions.

Installation

Refer to coverage charts and specifications on the other side.

- Over plywood substrates only: This step is required for the 1 hour fire rating and the ICC ES approval. Install AVM Crete 6400 1/4" thick per the installation instructions.
- Install the Elasto Fiberdeck® waterproofing membrane as follows:
- Patch all cracks, voids, etc, using AVM Acripatch 5020.
- Apply Primer 100 to all surfaces. Optional: For better bonding, upgrade to the AVM Epoxy Primer 400.
- Laminate the fiberglass mat with AVM Base Resin 100. Optional: Upgrade to AVM Mat 800 (A stronger reinforcing polyester fabric).

- Spray, trowel or roll the acrylic based AVM Texture 100 to all surfaces. Optional: AVM Concrete Texture 100 (when harder texture is needed).
- Apply the AVM Top Coat Sealer 4100/4150 to all surfaces.

Quality Control

- Visually inspect all coated surfaces to ensure a full and proper coating application, especially at corners, drainage scuppers and hard-to-reach areas.
- All unsatisfactory areas shall be repaired prior to final acceptance.

Protection of Installed Work

The completed section shall be protected from all pedestrian traffic for the first 24 hours after application and until the surface is sufficiently cured. (The amount of drying time may vary depending on temperature and humidity conditions) Typically, light foot traffic may resume after 4-6 hours.

Clean Up

Tools may be cleaned with water before resins are dry.

Maintenance

Periodic cleaning and maintenance is required. For further information, refer to the Elasto Fiberdeck® maintenance instructions.

Availability and Cost

Contact AVM Industries or your approved applicator for pricing and availability.

Technical Services

Technical services are available by contacting our offices at: **888.414.1041** or **818.888.0050** or visit **www.avmindustries.com**

System Specifications

See next page.

The following coverages are based on controlled tests. Actual coverages may vary.

Materials	One Kit Makes	One Kit Covers at 1/8" Thick	One Kit Covers at 1/4" Thick	One Kit Covers at 1/2" Thick
AVM Crete 6400	4 Gallons of Mixed Product	40 Square Feet	20 Square Feet	10 Square Feet
Weight of 1 sq. ft. of Crete 6400 installed & cured		1 sq. ft. at 1/8" thick = -1.25 lbs.	1 sq. ft. at 1/4" thick = -2.50 lbs.	1 sq. ft. at 1/2" thick = -5.00 lbs.

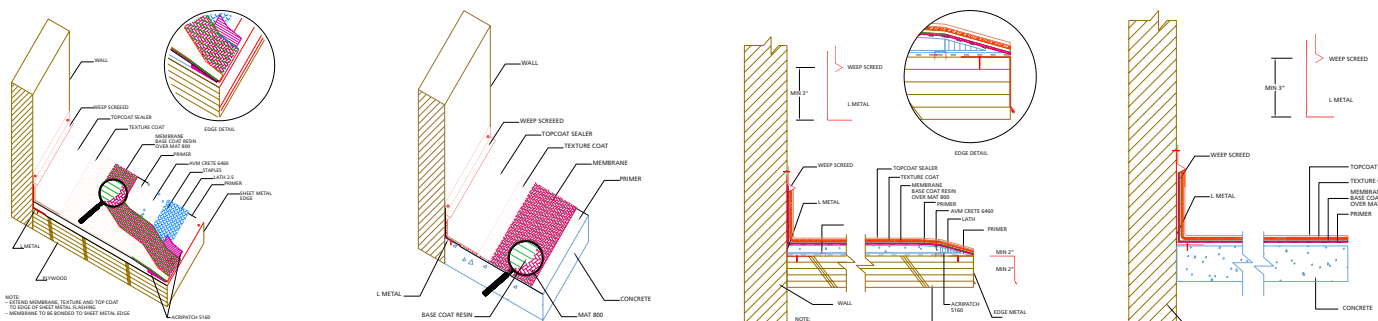
Materials	Over Plywood	Over Concrete	Over Sheet Metal
AVM Primer 100 / Optional AVM Epoxy Primer 400	200-300 sq. ft./gal.	200-300 sq. ft./gal.	200-300 sq. ft./gal.
AVM Base Resin 100	40-50 sq. ft./gal.	40-50 sq. ft./gal.	40-50 sq. ft./gal.
AVM Mat 100 / Optional Mat 800	Allow 5%-10% waste	Allow 5%-10% waste	Allow 5%-10% waste
AVM Texture 100 Sprayed Sand Finish	40-60 sq. ft./gal.	40-60 sq. ft./gal.	40-60 sq. ft./gal.
AVM Texture 100 Sprayed Knock Down Finish	40-60 sq. ft./gal. depending on desired look	40-60 sq. ft./gal. depending on desired look	40-60 sq. ft./gal. depending on desired look
AVM Texture 100 Troweled Smooth	35 sq. ft./gal.	35 sq. ft./gal.	35 sq. ft./gal.
AVM Top Coat Sealer 1st coat	100-120 sq. ft./gal.	100-120 sq. ft./gal.	100-120 sq. ft./gal.
AVM Top Coat Sealer 2nd Coat	150 sq. ft./gal.	150 sq. ft./gal.	150 Sq. ft./gal.

Technical Data - AVM System 100	
Fire Rating	Class A + 1 Hour over 2x8" Joists
Weatherometer	No Cracking, Softening, Crazing
Wind Uplift (Tested/Approved)	135+ lbs./sq. ft., -227 MPH/90 MPH
Abrasion	4.58% (Pass)
Bond Strength (Once Cured)	134 PSI
Compressive Strength ASTM C39,C172,C192,C470	7 Days: 2500 PSI, 28 Days: 3700 PSI
Impact Resistance, ASTM D-3746	No Cracking or Splits

General Data - AVM System 100	
Shelf Life: (Liquids)	One year in original unopened packaging.
Storage Conditions	Store dry at 50°-90°F. If frozen, discard
Cement Mixing Ratio	Pre-proportioned kit. 1-bag to 1-gal. additive
Cement Color	Gray
Base/Texture Colors	Silver, Tan and many Custom Colors
Top Coat Colors	30 Standard colors Custom colors are available - Call for details.

Minimum Dry Thickness - Complete System: 0.310. (AVM Crete 6400 must be at least 0.250" thick when dry)

Item/Component	Packaging	Approx. Shipping Weights	VOC
AVM AcriPatch 5020	2.0/5.0 gal. pails	2.0/5.0 gal. 15/39 lbs.	46 Grams/Liter
AVM Aggregate 400	50 lb. bag	50 lbs./bag	
AVM Additive 7400	2.0/5.0 gal. pails	2.0/5.0 gal. 18/46 lbs.	6 Grams/Liter
AVM Metal Lath 2.5#	10 sheets/bundle	5 lbs./sheet	
AVM Mat 100 / AVM Mat 800	1750 sq. ft. roll / 1080 sq. ft. roll	82.1 lbs. / 22.6 lbs.	
AVM Primer 100	2.0/5.0 gal. pails	2.0/5.0 gal. 18/46 lbs.	93 Grams/Liter
AVM Epoxy Primer 400	1.25 gal. kit / 5.0 gal. kit	11.6 lbs. / 47.6 lbs.	0 Grams/Liter
AVM Base 100	2.0/5.0 gal. pails	2.0/5.0 gal. 18/46 lbs.	85 Grams/Liter
AVM Texture 100	2.0/5.0 gal. pails	2.0/5.0 gal. 23/56 lbs.	31 Grams/Liter
AVM TX-100	50 lb. bag	50 lbs./bag	
AVM Top Coat 4100/4150	2.0/5.0 gal. pails	19/47 lbs.	85/73 Grams/Liter



For a complete list of details in CAD or PDF, please visit our website at www.avmindustries.com.

AVM Industries, Inc.
 8245 Remmet Ave, Canoga Park, CA 91304
 888.414.1041 818.888.0050

Quality Waterproofing Products



www.avmindustries.com