



AVM System 502 Aussie Membrane 502

2-Part Heavy Duty Below Grade Bituminous Waterproofing Membrane

ICC ESR-2503
L.A. RR#: 25550Sections 071000 / 071400 / 071416
Fluid Applied Waterproofing**Product Name**Aussie Membrane 502
AVM System 502**Manufactured by**AVM Industries, Inc.
8245 Remmet Ave, Canoga Park, CA 91304
888.414.1041 818.888.0050
www.avmindustries.com**Product Description**

The AVM Aussie Membrane 502 is a 2-part Water-Based rubber/bitumen liquid membrane modified with high performance rubberized polymers giving it excellent adhesion, which dries to a tough, black seamless flexible waterproof membrane. The Aussie Membrane 502 is a cold-applied liquid bitumen that exhibits excellent elongation and recovery properties. The AVM Aussie Membrane 502 has excellent long-term stability (maintains its properties of very long periods of time) un-like other below grade systems (including polyurethane based systems) that Crack and become brittle as they age.

Where to Use

Retaining Walls: Waterproof below-grade, concrete, block walls, basements, etc.

Planters: Waterproof planters and other landscaping features.

In-between slab waterproofing: To provide a sandwich membrane in-between two concrete slabs or over wood decks that will receive a topping slab. Also used as an under-tile membrane when a mud-bed or thick-set type assembly is required.

Lagging Systems, Blind Side Waterproofing: To waterproof Lagging assemblies and other blind side waterproofing applications.

Vapor Barriers: To provide a vapor barrier under slabs poured on grade to prevent the rising of moisture through the slabs. For both dry and submerged (tanked) applications.

Methane Barriers: To provide a Methane barrier to prevent the migration of Methane gas through the concrete slabs and retaining walls.

Green Roofs (Roof Gardens): For waterproofing roofs and other areas that will be turned into gardens or areas that support vegetation, plants, trees, etc. (Complete system includes membrane, root barrier, drainage mat, drains, light weight soil, etc.)

Roof Paver System: For waterproofing of roofs (Including over living space) and other areas in which a paver system will be installed. (Such as pavers over pedestals).

**Warranty**

Basic Warranty: Five (5) years. Longer warranties are also available. (Up to 20 years on some systems/applications) For complete warranty options and details, contact AVM Industries or consult with your applicator.

Delivery, Storage, and Handling

- Delivery of all the AVM System 502 materials to the job site must be in their original sealed containers, with manufacturer's name and label intact.
- Handle and store containers in accordance with printed instructions.
- Store at temperatures between 50°F and 90°F. Do not store materials in direct sunlight or where they may be damaged by water or rain.
- Failure to comply with the recommended storage conditions may result in premature deterioration of the product. For specific storage advice, please contact AVM Industries and/or its representatives.
- Keep all materials out of the reach of children.
- If irritation occurs during use, liberally flush affected areas with water. If irritation continues, see a physician immediately.

Project Conditions

- All surfaces to which the Aussie Membrane 502 is applied to must be sound and stable, with an even finish and free from dust, loose debris, grease, curing agents, etc. (for under-slab, lagging, etc, see under separate cover)
- The Aussie Membrane 502 may be applied to damp but not waterlogged surfaces (Green Concrete)
- Do not apply materials at temperatures below 40°F and falling or if precipitation is imminent. Do not apply materials in direct sunlight at temperatures above 100°F or rising.
- Warn personnel against hazards of materials to skin and eyes. Note other hazardous conditions on the job that might require special protective gear and or any other special protective or safety procedures.
- Protect adjacent surfaces which could be damaged during the application procedure.
- This system must not be used to cover Expansion Joints.

System Application

Read the AVM System 502 Installation Instructions Prior to Installation. Application instructions vary based on type of application and the type of surfaces it's being applied to. For specific application procedures, refer to, or download the appropriate installation instructions. (For Retaining Walls, refer to the "Retaining Walls Installation Instructions". For a Lagging System, refer to the "Lagging System Installation Instructions". Etc.)

Basic installation procedures are also provided in the "Spec Data Sheet" of each type of installation. For a complete/comprehensive set of instructions, however, please refer to the "Installation Instructions" documents.

Quality Control

- Visually inspect all coated surfaces to ensure a full and proper coating application, especially at corners, drainage footings and other hard-to-reach areas.
- All unsatisfactory areas shall be repaired prior to final acceptance.

Protection of Installed Work

- The completed section shall be protected for the first 24 hours after application or until the surface is sufficiently cured. (The amount of drying time may vary depending on temperature and humidity conditions)
- Always protect the waterproofing from possible damage. Use AVM Foam Board, AVM Drainage Boards or AVM Approved Protective Panels. Refer to the "spec Data Sheets" or to the "Aussie II Min Thickness Table" for protection details.

Availability and Cost

Contact AVM Industries or your approved applicator for pricing and availability.

Technical Services

Technical services are available by contacting our offices at: **888.414.1041** or **818.888.0050** or visit **www.avmindustries.com**

System Specifications

See next page.

The following coverages are based on controlled tests. Actual coverages may vary.

Technical Information		
Color	Emulsion: Dark brown. Membrane: black	
Specific Gravity	1 gr/cm ²	
Solid Content	60% +/- 2%	
Flash Point	Non-flammable	
Service Temperature	15°F-140°F (-10°C to +60°C)	
Application Temperature	40°F-100°F (+5°C to 40°C)	
Heat Stability	>194°F (>90°C)	ASTM D 2939
Cold Flexibility	-4°F (-20°C)	ASTM D 522
Low Temperature Flexibility and Crack Bridging	Pass, Conducted @ -15°F (-26°C)	ASTM D 836
Tensile Strength	>0.1 MPa (>14.2 psi)	ASTM D 412
Elongation at break	>1200%	ASTM D 412
Resistance to water pressure	>1 atm, 24 hr (>14.7 psi, 24 hr)	DIN 52123
Water vapor permeance	0.35 Perms	ASTM E 96
Recovery (at 800-900% elongation)	>85%	ASTM D 412
Creep At 212°F (100°C)	No Creep	DIN 52123
Resistance to Standing Water	Passed	ASTM D 2939
Bacterial Attack in soil 30 days @ 105°F (40°C)	Passed	ASTM D 3083
VOC (Volatile Organic Content)	20 Grams/Liter	
Crack bridging	>3/16" (>5mm)	IS 1731
Approvals / Certifications	ICC, LARR, ISO 9002, Green Label, I.Q. Net (International Certification Network)	

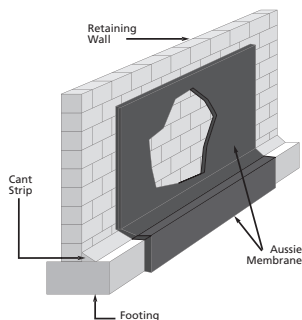
Mixing / Spraying Information	
Mixing Ratio	Accelerator (Salt water): Pour the 55 lbs of salt into 32-35 gallons of water
Spraying Ratio	1 Gallon accelerator (salt water) to 9 gallons of bitumen

For membrane thickness and drainage board requirements refer to the "Aussie II Min Thickness Table"

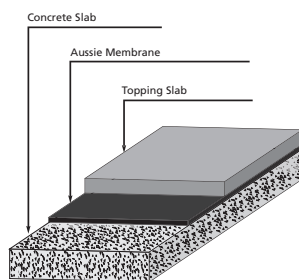
Coverage Tables (for U.S. and Metric Measurements)								
To Get	60 Mils Dry	90 Mils Dry	100 Mils Dry	120 Mils Dry	160 Mils Dry	180 Mils Dry	240 Mils Dry	270 Mils Dry
Apply	100 Mils Wet	150 Mils Wet	160 Mils Wet	200 Mils Wet	160 Mils Wet	300 Mils Wet	400 Mils Wet	450 Mils Wet
For 100 sqft	5.75 Gallons	8.75 Gallons	9.5 Gallons	11.5 Gallons	15 Gallons	17.25 Gallons	23 Gallons	26.25 Gallons
To Get	1.5 mm Dry	2.25 mm Dry	2.5 mm Dry	3.0 mm Dry	4.0 mm Dry	4.5 mm Dry	6.0 mm Dry	6.75 mm Dry
Apply	2.4 mm Wet	3.6 mm Wet	4.0 mm Wet	4.8 mm Wet	6.4 mm Wet	7.2 mm Wet	9.6 mm Wet	10.8 mm Wet
For M ²	2.4 kg/m ²	3.6 kg/m ²	4.0 kg/m ²	4.8 kg/m ²	6.5 kg/m ²	7.3 kg/m ²	9.6 kg/m ²	10.8 kg/m ²

Item / Component	Packaging	Approx Shipping Weights	VOC
AVM Primer 500	2.0/5.0 gal. pails	2.0/5.0 gal. 15/39 lbs.	15 Grams/Liter
AVM Aussie Membrane 502	264 Gal Totes	264.0 gal. 2,200 lbs / 1,000 kg (1-Ton)	19 Grams/Liter

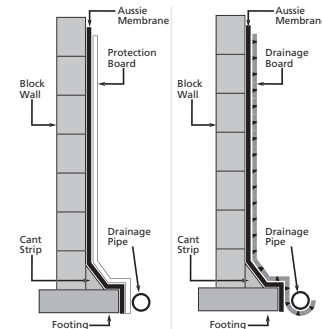
Retaining Wall with Aussie Membrane



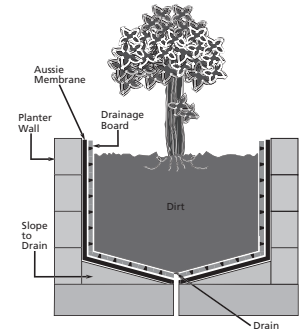
In-Between Slab Waterproofing



Block Walls with Aussie Membrane



Planter with Aussie Membrane



For a complete list of details in CAD or PDF, please visit our website at www.avmindustries.com.

AVM Industries, Inc.
8245 Remmet Ave, Canoga Park, CA 91304
888.414.1041 818.888.0050

Quality Waterproofing Products

www.avmindustries.com





AVM System 502 Aussie Membrane 502

2-Part Heavy Duty Below Grade Bituminous Waterproofing Membrane

ICC ESR-2503
L.A. RR#: 25550

Sections 071000 / 071400 / 071416
Fluid Applied Waterproofing

Product Name

Aussie Membrane 502
AVM System 502

Manufactured by

AVM Industries, Inc.
8245 Remmet Ave, Canoga Park, CA 91304
888.414.1041 818.888.0050
www.avmindustries.com

Product Description

The AVM Aussie Membrane 502 is a 2-part Water-Based rubber/bitumen liquid membrane modified with high performance rubberized polymers giving it excellent adhesion, which dries to a tough, black seamless flexible waterproof membrane. The Aussie Membrane 502 is a cold-applied liquid bitumen that exhibits excellent elongation and recovery properties. The AVM Aussie Membrane 502 has excellent long-term stability (maintains its properties of very long periods of time) un-like other below grade systems (including polyurethane based systems) that Crack and become brittle as they age.

Where to Use

Green Roofs (Roof Gardens): Complete Green Roof system for waterproofing green roofs (Roof Gardens) where the Aussie Membrane 502 is the primary waterproofing membrane over living spaces with plants and vegetation to be installed over the Green Roof waterproofing system.

Important note: For "Paver Roof Systems" please refer to the "Paver Roof Systems" Spec Data Sheet.

Warranty

AVM Industries will warranty the installed membrane for a period of five (5) years. Longer warranties are also available. For complete warranty details, contact AVM Industries or consult with your applicator.

Delivery, Storage, and Handling

- Delivery of all the AVM System 502 materials to the job site must be in their original sealed containers, with manufacturer's name and label intact.
- Handle and store containers in accordance with printed instructions.
- Store at temperatures between 50°F and 90°F. Do not store materials in direct sunlight or where they may be damaged by water or rain.
- Failure to comply with the recommended storage conditions may result in premature deterioration of the product. For specific storage advice, please contact AVM Industries and/or its representatives.

- Keep all materials out of the reach of children.
- If irritation occurs during use, liberally flush affected areas with water. If irritation continues, see a physician immediately.

Project Conditions

- All surfaces to which the Aussie Membrane 502 is applied to must be sound and stable, with an even finish and free from dust, loose debris, grease, curing agents, etc. (for under-slab, lagging, etc, see under separate cover)
- The Aussie Membrane 502 may be applied to damp but not waterlogged surfaces (Green Concrete)
- Do not apply materials at temperatures below 40°F and falling or if precipitation is imminent. Do not apply materials in direct sunlight at temperatures above 100°F or rising.
- Warn personnel against hazards of materials to skin and eyes. Note other hazardous conditions on the job that might require special protective gear and or any other special protective or safety procedures.
- Protect adjacent surfaces which could be damaged during the application procedure.
- This system must not be used to cover Expansion Joints.

System Application

Read the AVM System 502 Installation Instructions Prior to Installation. Application instructions vary based on application surfaces. Following are common application procedures only. For specific application procedures, download the appropriate installation instructions.

Preparation

- Make sure concrete surfaces are even without holes, gaps, etc. Make sure substrate has no cracks larger than 1/16" wide. If applying over plywood substrates, make sure it's exterior grade plywood, min 5/8" thick, (No OSB), it's sound and fully blocked.

- Over concrete, if necessary, apply a thin slurry coat using AVM Crete 6200. Over plywood, apply AVM Crete 6400 at a min of 1/4" thick to all plywood surfaces.
- Apply a 1"x1" mortar cant at 45° at horizontal-to-vertical transitions. Then apply a detailed coat. (See details)
- Mixing: Mix the product in the drum or tote by circulating it through the pump. For drums, mix each a min of 10 minutes, for totes, mix each a min of 15 minutes! Do not add or dilute with water!
- Priming: Spray a thin coat of the Aussie Membrane 502 without the accelerator as primer when needed.

Membrane Installation

Accelerator: Pour the 55 lbs of salt into 32-35 gallons of water and mix well.

Spray: Don't forget to pre-mix contents in drum or tote! (See installation instructions) Spray product with accelerator until desired thickness is achieved. Membrane should be 270 Mils dry with 2 Mat 800 fabrics inserted for reinforcement. If less, consult with engineer or AVM. (See Min Thickness Table and details for more information) Spraying ratio is measured by volume and should be 90% bitumen to 10% salt water. (For every gallon of salt water, spray 9 gallons of bitumen) Once the membrane is dry to the touch, check for proper thickness. If necessary, spray another coat. Walls: 2nd Coat on vertical walls must be applied within 2-3 minutes. Otherwise wait until the next day before applying the 2nd coat. Floors: Apply 1st coat from lowest parts to highest parts of the floor. (So salt water will not flow onto un-sprayed areas!) To apply a 2nd coat, evacuate the water before spraying the second coat and spray the second coat within 2-3 minutes of the first coat. Otherwise wait until the next day between coats.

Quality Control

- Visually inspect all coated surfaces to ensure a full and proper coating application, especially at corners, drainage footings and other hard-to-reach areas.
- All unsatisfactory areas shall be repaired prior to final acceptance.

Protection of Installed Work

- a. The completed section shall be protected for the first 24 hours after application or until the surface is sufficiently cured. (The amount of drying time may vary depending on temperature and humidity conditions)

- b. Always protect the waterproofing from possible damage. The Green Roof System includes proper drains, root barriers, special drainage mats and light weight soils. All are integral to the system. Refer to the job's specs and Installation Instructions for more info.

Availability and Cost

Contact AVM Industries or your approved applicator for pricing and availability.

Technical Services

Technical services are available by contacting our offices at: **888.414.1041** or **818.888.0050** or visit **www.avmindustries.com**

System Specifications

See below.

The following coverages are based on controlled tests. Actual coverages may vary.

Technical Information		
Color	Emulsion: Dark brown. Membrane: black	
Specific Gravity	1 gr/cm ²	
Solid Content	60% +/- 2%	
Flash Point	Non-flammable	
Service Temperature	15°F-140°F (-10°C to +60°C)	
Application Temperature	40°F-100°F (+5°C to 40°C)	
Heat Stability	>194°F (>90°C)	ASTM D 2939
Cold Flexibility	-4°F (-20°C)	ASTM D 522
Low Temperature Flexibility and Crack Bridging	Pass, Conducted @ -15°F (-26°C)	ASTM D 836
Tensile Strength	>0.1 MPa (>14.2 psi)	ASTM D 412
Elongation at break	>1200%	ASTM D 412
Resistance to water pressure	>1 atm, 24 hr (>14.7 psi, 24 hr)	DIN 52123
Water vapor permeance	0.35 Perms	ASTM E 96
Recovery (at 800-900% elongation)	>85%	ASTM D 412
Creep At 212°F (100°C)	No Creep	DIN 52123
Resistance to Standing Water	Passed	ASTM D 2939
Bacterial Attack in soil 30 days @ 105°F (40°C)	Passed	ASTM D 3083
VOC (Volatile Organic Content)	20 Grams/Liter	
Crack bridging	>3/16" (>5mm)	IS 1731
Approvals / Certifications	ICC, LARR, ISO 9002, Green Label, I.Q. Net (International Certification Network)	

Mixing / Spraying Information	
Mixing Ratio	Accelerator (Salt water): Pour the 55 lbs of salt into 32-35 gallons of water
Spraying Ratio	1 Gallon accelerator (salt water) to 9 gallons of bitumen

For membrane thickness and drainage board requirements refer to the "Aussie II Min Thickness Table"

Coverage Tables (for U.S. and Metric Measurements)								
To Get	60 Mils Dry	90 Mils Dry	100 Mils Dry	120 Mils Dry	160 Mils Dry	180 Mils Dry	240 Mils Dry	270 Mils Dry
Apply	100 Mils Wet	150 Mils Wet	160 Mils Wet	200 Mils Wet	160 Mils Wet	300 Mils Wet	400 Mils Wet	450 Mils Wet
For 100 sqft	5.75 Gallons	8.75 Gallons	9.5 Gallons	11.5 Gallons	15 Gallons	17.25 Gallons	23 Gallons	26.25 Gallons
To Get	1.5 mm Dry	2.25 mm Dry	2.5 mm Dry	3.0 mm Dry	4.0 mm Dry	4.5 mm Dry	6.0 mm Dry	6.75 mm Dry
Apply	2.4 mm Wet	3.6 mm Wet	4.0 mm Wet	4.8 mm Wet	6.4 mm Wet	7.2 mm Wet	9.6 mm Wet	10.8 mm Wet
For M ²	2.4 kg/m ²	3.6 kg/m ²	4.0 kg/m ²	4.8 kg/m ²	6.5 kg/m ²	7.3 kg/m ²	9.6 kg/m ²	10.8 kg/m ²

Item / Component	Packaging	Approx Shipping Weights	VOC
AVM Primer 500	2.0/5.0 gal. pails	2.0/5.0 gal. 15/39 lbs.	15 Grams/Liter
AVM Aussie Membrane 502	264 Gal Totes	264.0 gal. 2,200 lbs / 1,000 kg (1-Ton)	19 Grams/Liter

For a complete list of details in CAD or PDF, please visit our website at www.avmindustries.com.

AVM Industries, Inc.
8245 Remmet Ave, Canoga Park, CA 91304
888.414.1041 818.888.0050

Quality Waterproofing Products



www.avmindustries.com



AVM System 502 Aussie Membrane 502

2-Part Heavy Duty Below Grade Bituminous Waterproofing Membrane

ICC ESR-2503
L.A. RR#: 25550

Sections 071000 / 071400 / 071416
Fluid Applied Waterproofing

Product Name

Aussie Membrane 502
AVM System 502

Manufactured by

AVM Industries, Inc.
8245 Remmet Ave, Canoga Park, CA 91304
888.414.1041 818.888.0050
www.avmindustries.com

Product Description

The AVM Aussie Membrane 502 is a 2-part Water-Based rubber/bitumen liquid membrane modified with high performance rubberized polymers giving it excellent adhesion, which dries to a tough, black seamless flexible waterproof membrane. The Aussie Membrane 502 is a cold-applied liquid bitumen that exhibits excellent elongation and recovery properties. The AVM Aussie Membrane 502 has excellent long-term stability (maintains its properties of very long periods of time) un-like other below grade systems (including polyurethane based systems) that Crack and become brittle as they age.

Where to Use

Lagging Systems/Blind Side Waterproofing: Waterproof below-grade walls with lagging systems, shot-crete, poured in place concrete, etc. (Blind Side Waterproofing)

Warranty

AVM Industries will warranty the installed membrane for a period of five (5) years. Longer warranties are also available. For complete warranty details, contact AVM Industries or consult with your applicator.

Delivery, Storage, and Handling

- Delivery of all the AVM System 502 materials to the job site must be in their original sealed containers, with manufacturer's name and label intact.
- Handle and store containers in accordance with printed instructions.
- Store at temperatures between 50°F and 90°F. Do not store materials in direct sunlight or where they may be damaged by water or rain.
- Failure to comply with the recommended storage conditions may result in premature deterioration of the product. For specific storage advice, please contact AVM Industries and/or its representatives.
- Keep all materials out of the reach of children.
- If irritation occurs during use, liberally flush affected areas with water. If irritation continues, see a physician immediately.



Project Conditions

- All surfaces to which the Aussie Membrane 502 is applied to must be sound and stable, with an even finish and free from dust, loose debris, grease, curing agents, etc.
- The Aussie Membrane 502 may be applied to damp but not waterlogged surfaces (Green Concrete)
- Do not apply materials at temperatures below 40°F and falling or if precipitation is imminent. Do not apply materials in direct sunlight at temperatures above 100°F or rising.
- Warn personnel against hazards of materials to skin and eyes. Note other hazardous conditions on the job that might require special protective gear and or any other special protective or safety procedures.
- Protect adjacent surfaces which could be damaged during the application procedure.
- This system must not be used to cover Expansion Joints.

System Application

Refer to the "Lagging Systems Installation Instructions" for complete installation instructions and procedures.

Preparation

- Mixing: Mix the product in the drum or tote by circulating it through the pump. For drums, mix each a min of 10 minutes, for totes, mix each a min of 15 minutes! Do not add or dilute with water!

Membrane Installation

Accelerator: Pour the 55 lbs of salt into 32-35 gallons of water and mix well.

Spray: Don't forget to pre-mix contents in drum or tote! (See installation instructions)

Spray product with accelerator until desired thickness is achieved. (See Min Thickness Table) Spraying ratio is measured by volume and should be 90% bitumen to 10% salt water. (For every gallon of salt water, spray 9 gallons of bitumen) Once the membrane is

dry to the touch, check for proper thickness. If necessary, spray another coat. Walls: 2nd Coat on vertical walls must be applied within 2-3 minutes. Otherwise wait until the next day before applying the 2nd coat. Floors: Apply 1st coat from lowest parts to highest parts of the floor. (So salt water will not flow onto un-sprayed areas!) To apply a 2nd coat, evacuate the water before spraying the second coat and spray the second coat within 2-3 minutes of the first coat. Otherwise wait until the next day between coats.

Quality Control

- Visually inspect all coated surfaces to ensure a full and proper coating application, especially at corners, drainage footings and other hard-to-reach areas.
- All unsatisfactory areas shall be repaired prior to final acceptance.

Protection of Installed Work

- The completed section shall be protected for the first 24 hours after application or until the surface is sufficiently cured. (The amount of drying time may vary depending on temperature and humidity conditions)
- Always protect the waterproofing from possible damage. Install the appropriate AVM Drain Board and appropriate drainage system. Refer to Technical Details, "Min Thickness Table" and "Installation Instructions for more info.

Availability and Cost

Contact AVM Industries or your approved applicator for pricing and availability.

Technical Services

Technical services are available by contacting our offices at: **888.414.1041** or **818.888.0050** or visit **www.avmindustries.com**

System Specifications

See next page.

The following coverages are based on controlled tests. Actual coverages may vary.

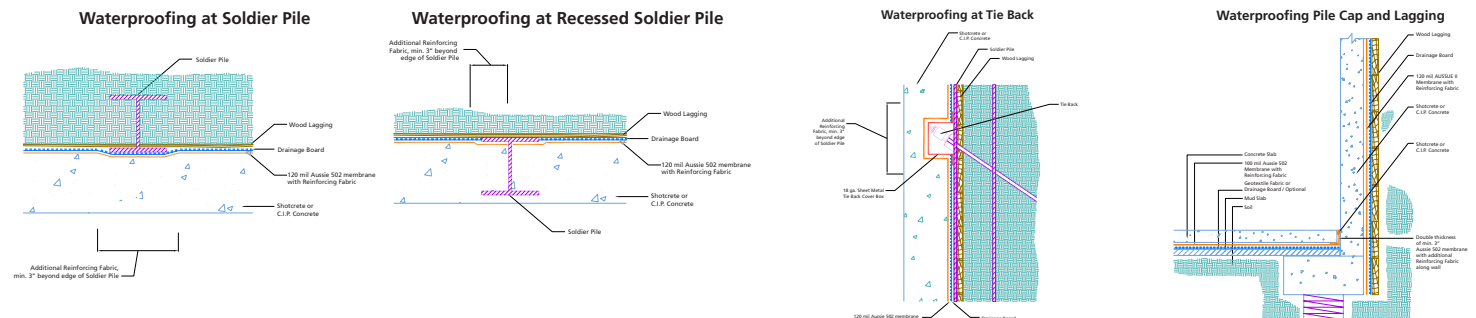
Technical Information		
Color	Emulsion: Dark brown. Membrane: black	
Specific Gravity	1 gr/cm ²	
Solid Content	60% +/- 2%	
Flash Point	Non-flammable	
Service Temperature	15°F-140°F (-10°C to +60°C)	
Application Temperature	40°F-100°F (+5°C to 40°C)	
Heat Stability	>194°F (>90°C)	ASTM D 2939
Cold Flexibility	-4°F (-20°C)	ASTM D 522
Low Temperature Flexibility and Crack Bridging	Pass, Conducted @ -15°F (-26°C)	ASTM D 836
Tensile Strength	>0.1 MPa (>14.2 psi)	ASTM D 412
Elongation at break	>1200%	ASTM D 412
Resistance to water pressure	>1 atm, 24 hr (>14.7 psi, 24 hr)	DIN 52123
Water vapor permeance	0.35 Perms	ASTM E 96
Recovery (at 800-900% elongation)	>85%	ASTM D 412
Creep At 212°F (100°C)	No Creep	DIN 52123
Resistance to Standing Water	Passed	ASTM D 2939
Bacterial Attack in soil 30 days @ 105°F (40°C)	Passed	ASTM D 3083
VOC (Volatile Organic Content)	20 Grams/Liter	
Crack bridging	>3/16" (>5mm)	IS 1731
Approvals / Certifications	ICC, LARR, ISO 9002, Green Label, I.Q. Net (International Certification Network)	

Mixing / Spraying Information	
Mixing Ratio	Accelerator (Salt water): Pour the 55 lbs of salt into 32-35 gallons of water
Spraying Ratio	1 Gallon accelerator (salt water) to 9 gallons of bitumen

For membrane thickness and drainage board requirements refer to the "Aussie II Min Thickness Table"

Coverage Tables (for U.S. and Metric Measurements)								
To Get	60 Mils Dry	90 Mils Dry	100 Mils Dry	120 Mils Dry	160 Mils Dry	180 Mils Dry	240 Mils Dry	270 Mils Dry
Apply	100 Mils Wet	150 Mils Wet	160 Mils Wet	200 Mils Wet	160 Mils Wet	300 Mils Wet	400 Mils Wet	450 Mils Wet
For 100 sqft	5.75 Gallons	8.75 Gallons	9.5 Gallons	11.5 Gallons	15 Gallons	17.25 Gallons	23 Gallons	26.25 Gallons
To Get	1.5 mm Dry	2.25 mm Dry	2.5 mm Dry	3.0 mm Dry	4.0 mm Dry	4.5 mm Dry	6.0 mm Dry	6.75 mm Dry
Apply	2.4 mm Wet	3.6 mm Wet	4.0 mm Wet	4.8 mm Wet	6.4 mm Wet	7.2 mm Wet	9.6 mm Wet	10.8 mm Wet
For M ²	2.4 kg/m ²	3.6 kg/m ²	4.0 kg/m ²	4.8 kg/m ²	6.5 kg/m ²	7.3 kg/m ²	9.6 kg/m ²	10.8 kg/m ²

Item / Component	Packaging	Approx Shipping Weights	VOC
AVM Primer 500	2.0/5.0 gal. pails	2.0/5.0 gal. 15/39 lbs.	15 Grams/Liter
AVM Aussie Membrane 502	264 Gal Totes	264.0 gal. 2,200 lbs / 1,000 kg (1-Ton)	19 Grams/Liter



For a complete list of details in CAD or PDF, please visit our website at www.avmindustries.com.

AVM Industries, Inc.
8245 Remmet Ave, Canoga Park, CA 91304
888.414.1041 818.888.0050

Quality Waterproofing Products

www.avmindustries.com





AVM System 502 Aussie Membrane 502

2-Part Heavy Duty Below Grade Bituminous Waterproofing Membrane

ICC ESR-2503
L.A. RR#: 25550

Sections 071000 / 071400 / 071416
Fluid Applied Waterproofing

Product Name

Aussie Membrane 502
AVM System 502

Manufactured by

AVM Industries, Inc.
8245 Remmet Ave, Canoga Park, CA 91304
888.414.1041 818.888.0050
www.avmindustries.com

Product Description

The AVM Aussie Membrane 502 is a 2-part Water-Based rubber/bitumen liquid membrane modified with high performance rubberized polymers giving it excellent adhesion, which dries to a tough, black seamless flexible waterproof membrane. The Aussie Membrane 502 is a cold-applied liquid bitumen that exhibits excellent elongation and recovery properties. The AVM Aussie Membrane 502 has excellent long-term stability (maintains its properties of very long periods of time) un-like other below grade systems (including polyurethane based systems) that Crack and become brittle as they age.

Where to Use

Use on Below-Grade applications requiring a complete Methane Barrier system.

Warranty

AVM Industries will warranty the installed membrane for a period of five (5) years. Longer warranties are also available. For complete warranty details, contact AVM Industries or consult with your applicator.

Delivery, Storage, and Handling

- Delivery of all the AVM System 502 materials to the job site must be in their original sealed containers, with manufacturer's name and label intact.
- Handle and store containers in accordance with printed instructions.
- Store at temperatures between 50°F and 90°F. Do not store materials in direct sunlight or where they may be damaged by water or rain.
- Failure to comply with the recommended storage conditions may result in premature deterioration of the product. For specific storage advice, please contact AVM Industries and/or its representatives.
- Keep all materials out of the reach of children.
- If irritation occurs during use, liberally flush affected areas with water. If irritation continues, see a physician immediately.



Project Conditions

- All surfaces to which the Aussie Membrane 502 is applied to must be properly prepared. Refer to the "Methane Barriers Installation Instructions" for details.
- The Aussie Membrane 502 may be applied to damp but not waterlogged surfaces (Green Concrete)
- Do not apply materials at temperatures below 40°F and falling or if precipitation is imminent. Do not apply materials in direct sunlight at temperatures above 100°F or rising.
- Warn personnel against hazards of materials to skin and eyes. Note other hazardous conditions on the job that might require special protective gear and or any other special protective or safety procedures.
- Protect adjacent surfaces which could be damaged during the application procedure.
- This system must not be used to cover Expansion Joints.

System Application

Refer to the "Methane Barriers Installation Instructions" for complete installation instructions and procedures.

Preparation

- Mixing: Mix the product in the drum or tote by circulating it through the pump. For drums, mix each a min of 10 minutes, for totes, mix each a min of 15 minutes! Do not add or dilute with water!

Membrane Installation

Accelerator: Pour the 55 lbs of salt into 32-35 gallons of water and mix well.

Spray: Don't forget to pre-mix contents in drum or tote! (See installation instructions)

Spray product with accelerator until desired thickness is achieved. (See Min Thickness Table) Spraying ratio is measured by volume and should be 90% bitumen to 10% salt water. (For every gallon of salt water, spray 9 gallons of bitumen) Once the membrane is

dry to the touch, check for proper thickness. If necessary, spray another coat. Walls: 2nd Coat on vertical walls must be applied within 2-3 minutes. Otherwise wait until the next day before applying the 2nd coat. Floors: Apply 1st coat from lowest parts to highest parts of the floor. (So salt water will not flow onto un-sprayed areas!) To apply a 2nd coat, evacuate the water before spraying the second coat and spray the second coat within 2-3 minutes of the first coat. Otherwise wait until the next day between coats.

Quality Control

- Visually inspect all coated surfaces to ensure a full and proper coating application, especially at corners, drainage footings and other hard-to-reach areas.
- All unsatisfactory areas shall be repaired prior to final acceptance.

Protection of Installed Work

- The completed section shall be protected for the first 24 hours after application or until the surface is sufficiently cured. (The amount of drying time may vary depending on temperature and humidity conditions)
- Always protect the waterproofing from possible damage. Install the appropriate protection.
- Methane systems are engineered on a "Per-Job" basis. Therefore, when installing a Methane system, refer to that job's specifications for details. No two jobs are alike! If information is missing or incomplete, please contact the methane system engineer or AVM before proceeding!

Availability and Cost

Contact AVM Industries or your approved applicator for pricing and availability.

Technical Services

Technical services are available by contacting our offices at: **888.414.1041** or **818.888.0050** or visit **www.avmindustries.com**

System Specifications

See next page.

The following coverages are based on controlled tests. Actual coverages may vary.

Technical Information		
Color	Emulsion: Dark brown. Membrane: black	
Specific Gravity	1 gr/cm ²	
Solid Content	60% +/- 2%	
Flash Point	Non-flammable	
Service Temperature	15°F-140°F (-10°C to +60°C)	
Application Temperature	40°F-100°F (+5°C to 40°C)	
Heat Stability	>194°F (>90°C)	ASTM D 2939
Cold Flexibility	-4°F (-20°C)	ASTM D 522
Low Temperature Flexibility and Crack Bridging	Pass, Conducted @ -15°F (-26°C)	ASTM D 836
Tensile Strength	>0.1 MPa (>14.2 psi)	ASTM D 412
Elongation at break	>1200%	ASTM D 412
Resistance to water pressure	>1 atm, 24 hr (>14.7 psi, 24 hr)	DIN 52123
Water vapor permeance	0.35 Perms	ASTM E 96
Recovery (at 800-900% elongation)	>85%	ASTM D 412
Creep At 212°F (100°C)	No Creep	DIN 52123
Resistance to Standing Water	Passed	ASTM D 2939
Bacterial Attack in soil 30 days @ 105°F (40°C)	Passed	ASTM D 3083
VOC (Volatile Organic Content)	20 Grams/Liter	
Crack bridging	>3/16" (>5mm)	IS 1731
Approvals / Certifications	ICC, LARR, ISO 9002, Green Label, I.Q. Net (International Certification Network)	

Mixing / Spraying Information	
Mixing Ratio	Accelerator (Salt water): Pour the 55 lbs of salt into 32-35 gallons of water
Spraying Ratio	1 Gallon accelerator (salt water) to 9 gallons of bitumen

For membrane thickness and drainage board requirements refer to the "Aussie II Min Thickness Table"

Coverage Tables (for U.S. and Metric Measurements)								
To Get	60 Mils Dry	90 Mils Dry	100 Mils Dry	120 Mils Dry	160 Mils Dry	180 Mils Dry	240 Mils Dry	270 Mils Dry
Apply	100 Mils Wet	150 Mils Wet	160 Mils Wet	200 Mils Wet	160 Mils Wet	300 Mils Wet	400 Mils Wet	450 Mils Wet
For 100 sqft	5.75 Gallons	8.75 Gallons	9.5 Gallons	11.5 Gallons	15 Gallons	17.25 Gallons	23 Gallons	26.25 Gallons
To Get	1.5 mm Dry	2.25 mm Dry	2.5 mm Dry	3.0 mm Dry	4.0 mm Dry	4.5 mm Dry	6.0 mm Dry	6.75 mm Dry
Apply	2.4 mm Wet	3.6 mm Wet	4.0 mm Wet	4.8 mm Wet	6.4 mm Wet	7.2 mm Wet	9.6 mm Wet	10.8 mm Wet
For M ²	2.4 kg/m ²	3.6 kg/m ²	4.0 kg/m ²	4.8 kg/m ²	6.5 kg/m ²	7.3 kg/m ²	9.6 kg/m ²	10.8 kg/m ²

Item / Component	Packaging	Approx Shipping Weights	VOC
AVM Primer 500	2.0/5.0 gal. pails	2.0/5.0 gal. 15/39 lbs.	15 Grams/Liter
AVM Aussie Membrane 502	264 Gal Totes	264.0 gal. 2,200 lbs / 1,000 kg (1-Ton)	19 Grams/Liter

For a complete list of details in CAD or PDF, please visit our website at www.avmindustries.com.

AVM Industries, Inc.
8245 Remmet Ave, Canoga Park, CA 91304
888.414.1041 818.888.0050

Quality Waterproofing Products



www.avmindustries.com



AVM System 502 Aussie Membrane 502

2-Part Heavy Duty Below Grade Bituminous Waterproofing Membrane

ICC ESR-2503
L.A. RR#: 25550

Sections 071000 / 071400 / 071416
Fluid Applied Waterproofing

Product Name

Aussie Membrane 502
AVM System 502

Manufactured by

AVM Industries, Inc.
8245 Remmet Ave, Canoga Park, CA 91304
888.414.1041 818.888.0050
www.avmindustries.com

Product Description

The AVM Aussie Membrane 502 is a 2-part Water-Based rubber/bitumen liquid membrane modified with high performance rubberized polymers giving it excellent adhesion, which dries to a tough, black seamless flexible waterproof membrane. The Aussie Membrane 502 is a cold-applied liquid bitumen that exhibits excellent elongation and recovery properties. The AVM Aussie Membrane 502 has excellent long-term stability (maintains its properties of very long periods of time) un-like other below grade systems (including polyurethane based systems) that Crack and become brittle as they age.

Where to Use

Planters: For waterproofing planters made of block or concrete.

Important note: For "Green Roofs" (Roof Gardens) please refer to the "Green Roofs" Spec Data Sheet.

Warranty

AVM Industries will warranty the installed membrane for a period of five (5) years. A ten (10) year warranty is also available. For complete warranty details, contact AVM Industries or consult with your applicator.

Delivery, Storage, and Handling

- Delivery of all the AVM System 502 materials to the job site must be in their original sealed containers, with manufacturer's name and label intact.
- Handle and store containers in accordance with printed instructions.
- Store at temperatures between 50°F and 90°F. Do not store materials in direct sunlight or where they may be damaged by water or rain.
- Failure to comply with the recommended storage conditions may result in premature deterioration of the product. For specific storage advice, please contact AVM Industries and/or its representatives.
- Keep all materials out of the reach of children.
- If irritation occurs during use, liberally flush affected areas with water. If irritation continues, see a physician immediately.

Project Conditions

- All surfaces to which the Aussie Membrane 502 is applied to must be sound and stable, with an even finish and free from dust, loose debris, grease, curing agents, etc. (for under-slab, lagging, etc, see under separate cover).



- The Aussie Membrane 502 may be applied to damp but not waterlogged surfaces (Green Concrete)
- Do not apply materials at temperatures below 40°F and falling or if precipitation is imminent. Do not apply materials in direct sunlight at temperatures above 100°F or rising.
- Warn personnel against hazards of materials to skin and eyes. Note other hazardous conditions on the job that might require special protective gear and or any other special protective or safety procedures.
- Protect adjacent surfaces which could be damaged during the application procedure.
- This system must not be used to cover Expansion Joints.

System Application

Read the AVM System 502 Installation Instructions Prior to Installation. Application instructions vary based on application surfaces. Following are common application procedures only. For specific application procedures, download the appropriate installation instructions.

Preparation

- Make sure surface is even without holes, gaps, etc. Make sure substrate has no cracks larger than 1/16" wide. Pay special attention to shrinkage cracks between the blocks and the mortar at the block's joints.
- If necessary, apply a thin slurry coat using AVM Crete 6200.
- Apply a 4"x4" mortar cant at 45° at the cold joints. (Where the block meets the footings)
- Mixing: Mix the product in the drum or tote by circulating it through the pump. For drums, mix each a min of 10 minutes, for totes, mix each a min of 15 minutes! Do not add or dilute with water!
- Priming is highly recommended! Especially if surfaces are old, dusty or very dense (such as solid concrete) Spray a thin coat of the Aussie Membrane 502 without the accelerator as primer when needed.

Membrane Installation

Accelerator: Pour the 55 lbs of salt into 32-35 gallons of water and mix well.

Spray: Don't forget to pre-mix contents in drum or tote! (See installation instructions)

Spray product with accelerator until desired thickness is achieved. (See Min Thickness Table) Spraying ratio is measured by volume and should be 90% bitumen to 10% salt water. (For every gallon of salt water, spray 9 gallons of bitumen) Once the membrane is dry to the touch, check for proper thickness. If necessary, spray another coat. Walls: 2nd Coat on vertical walls must be applied within 2-3 minutes. Otherwise wait until the next day before applying the 2nd coat. Floors: Apply 1st coat from lowest parts to highest parts of the floor. (So salt water will not flow onto un-sprayed areas!) To apply a 2nd coat, evacuate the water before spraying the second coat and spray the second coat within 2-3 minutes of the first coat. Otherwise wait until the next day between coats.

Quality Control

- Visually inspect all coated surfaces to ensure a full and proper coating application, especially at corners, drainage footings and other hard-to-reach areas.
- All unsatisfactory areas shall be repaired prior to final acceptance.

Protection of Installed Work

- The completed section shall be protected for the first 24 hours after application or until the surface is sufficiently cured. (The amount of drying time may vary depending on temperature and humidity conditions)
- Always protect the waterproofing from possible damage. First install a root barrier (such as 1/4" Apoc Protective Panels) or other approved root barrier. Then, on horizontal surfaces, install AVM Drain Board 9000. On vertical surfaces, install AVM Drain Board 6000. Refer to Technical Details, "Min Thickness Table" and "Installation Instructions for more info.

Availability and Cost

Contact AVM Industries or your approved applicator for pricing and availability.

Technical Services

Technical services are available by contacting our offices at: **888.414.1041** or **818.888.0050** or visit **www.avmindustries.com**

System Specifications

See next page.

The following coverages are based on controlled tests. Actual coverages may vary.

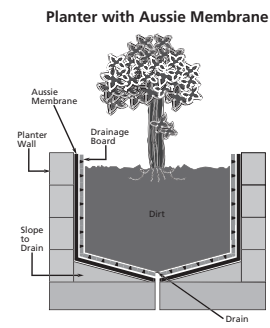
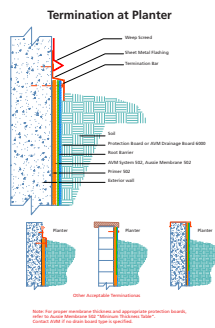
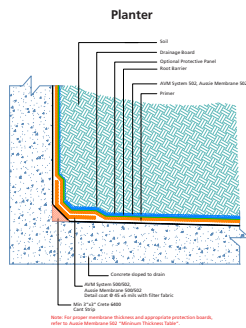
Technical Information		
Color	Emulsion: Dark brown. Membrane: black	
Specific Gravity	1 gr/cm ²	
Solid Content	60% +/- 2%	
Flash Point	Non-flammable	
Service Temperature	15°F-140°F (-10°C to +60°C)	
Application Temperature	40°F-100°F (+5°C to 40°C)	
Heat Stability	>194°F (>90°C)	ASTM D 2939
Cold Flexibility	-4°F (-20°C)	ASTM D 522
Low Temperature Flexibility and Crack Bridging	Pass, Conducted @ -15°F (-26°C)	ASTM D 836
Tensile Strength	>0.1 MPa (>14.2 psi)	ASTM D 412
Elongation at break	>1200%	ASTM D 412
Resistance to water pressure	>1 atm, 24 hr (>14.7 psi, 24 hr)	DIN 52123
Water vapor permeance	0.35 Perms	ASTM E 96
Recovery (at 800-900% elongation)	>85%	ASTM D 412
Creep At 212°F (100°C)	No Creep	DIN 52123
Resistance to Standing Water	Passed	ASTM D 2939
Bacterial Attack in soil 30 days @ 105°F (40°C)	Passed	ASTM D 3083
VOC (Volatile Organic Content)	20 Grams/Liter	
Crack bridging	>3/16" (>5mm)	IS 1731
Approvals / Certifications	ICC, LARR, ISO 9002, Green Label, I.Q. Net (International Certification Network)	

Mixing / Spraying Information	
Mixing Ratio	Accelerator (Salt water): Pour the 55 lbs of salt into 32-35 gallons of water
Spraying Ratio	1 Gallon accelerator (salt water) to 9 gallons of bitumen

For membrane thickness and drainage board requirements refer to the "Aussie II Min Thickness Table"

Coverage Tables (for U.S. and Metric Measurements)								
To Get	60 Mils Dry	90 Mils Dry	100 Mils Dry	120 Mils Dry	160 Mils Dry	180 Mils Dry	240 Mils Dry	270 Mils Dry
Apply	100 Mils Wet	150 Mils Wet	160 Mils Wet	200 Mils Wet	160 Mils Wet	300 Mils Wet	400 Mils Wet	450 Mils Wet
For 100 sqft	5.75 Gallons	8.75 Gallons	9.5 Gallons	11.5 Gallons	15 Gallons	17.25 Gallons	23 Gallons	26.25 Gallons
To Get	1.5 mm Dry	2.25 mm Dry	2.5 mm Dry	3.0 mm Dry	4.0 mm Dry	4.5 mm Dry	6.0 mm Dry	6.75 mm Dry
Apply	2.4 mm Wet	3.6 mm Wet	4.0 mm Wet	4.8 mm Wet	6.4 mm Wet	7.2 mm Wet	9.6 mm Wet	10.8 mm Wet
For M ²	2.4 kg/m ²	3.6 kg/m ²	4.0 kg/m ²	4.8 kg/m ²	6.5 kg/m ²	7.3 kg/m ²	9.6 kg/m ²	10.8 kg/m ²

Item / Component	Packaging	Approx Shipping Weights	VOC
AVM Primer 500	2.0/5.0 gal. pails	2.0/5.0 gal. 15/39 lbs.	15 Grams/Liter
AVM Aussie Membrane 502	264 Gal Totes	264.0 gal. 2,200 lbs / 1,000 kg (1-Ton)	19 Grams/Liter



For a complete list of details in CAD or PDF, please visit our website at www.avmindustries.com.

AVM Industries, Inc.
8245 Remmet Ave, Canoga Park, CA 91304
888.414.1041 818.888.0050

Quality Waterproofing Products

www.avmindustries.com





AVM System 502 Aussie Membrane 502

2-Part Heavy Duty Below Grade Bituminous Waterproofing Membrane

ICC ESR-2503
L.A. RR#: 25550

Sections 071000 / 071400 / 071416
Fluid Applied Waterproofing

Product Name

Aussie Membrane 502
AVM System 502

Manufactured by

AVM Industries, Inc.
8245 Remmet Ave, Canoga Park, CA 91304
888.414.1041 818.888.0050
www.avmindustries.com

Product Description

The AVM Aussie Membrane 502 is a 2-part Water-Based rubber/bitumen liquid membrane modified with high performance rubberized polymers giving it excellent adhesion, which dries to a tough, black seamless flexible waterproof membrane. The Aussie Membrane 502 is a cold-applied liquid bitumen that exhibits excellent elongation and recovery properties. The AVM Aussie Membrane 502 has excellent long-term stability (maintains its properties of very long periods of time) un-like other below grade systems (including polyurethane based systems) that Crack and become brittle as they age.

Where to Use

Walls: Waterproof below-grade, concrete, and block walls, etc.

Basements: Waterproof basements.

Elevator Pits: Waterproof Elevator pits.

Warranty

AVM Industries will warranty the installed membrane for a period of five (5) years. A ten (10) year warranty is also available. For complete warranty details, contact AVM Industries or consult with your applicator.

Delivery, Storage, and Handling

- Delivery of all the AVM System 502 materials to the job site must be in their original sealed containers, with manufacturer's name and label intact.
- Handle and store containers in accordance with printed instructions.
- Store at temperatures between 50°F and 90°F. Do not store materials in direct sunlight or where they may be damaged by water or rain.
- Failure to comply with the recommended storage conditions may result in premature deterioration of the product. For specific storage advice, please contact AVM Industries and/or its representatives.
- Keep all materials out of the reach of children.
- If irritation occurs during use, liberally flush affected areas with water. If irritation continues, see a physician immediately.

Project Conditions

- All surfaces to which the Aussie Membrane 502 is applied to must be sound and stable, with an even finish and free from dust, loose debris, grease, curing agents, etc. (for under-slab, lagging, etc, see under separate cover).



- The Aussie Membrane 502 may be applied to damp but not waterlogged surfaces (Green Concrete)
- Do not apply materials at temperatures below 40°F and falling or if precipitation is imminent. Do not apply materials in direct sunlight at temperatures above 100°F or rising.
- Warn personnel against hazards of materials to skin and eyes. Note other hazardous conditions on the job that might require special protective gear and or any other special protective or safety procedures.
- Protect adjacent surfaces which could be damaged during the application procedure.
- This system must not be used to cover Expansion Joints.

System Application

Read the AVM System 502 Installation Instructions Prior to Installation. Application instructions vary based on application surfaces. Following are common (Generic) application procedures only. For specific application procedures, download the appropriate installation instructions.

Preparation

- Make sure surface is even without holes, gaps, etc. Make sure substrate has no cracks larger than 1/16" wide. Pay special attention to shrinkage cracks between the blocks and the mortar at the block's joints.
- If necessary, apply a thin slurry coat using AVM Crete 6200.
- Apply a 4"x4" mortar cant at 45° at the cold joints. (Where the block meets the footings)
- Mixing: Mix the product in the drum or tote by circulating it through the pump. For drums, mix each a min of 10 minutes, for totes, mix each a min of 15 minutes! Do not add or dilute with water!
- Priming is highly recommended! Especially if surfaces are old, dusty or very dense (such as solid concrete) Spray a thin coat of the Aussie Membrane 502 without the accelerator as primer when needed.

Membrane Installation

Accelerator: Pour the 55 lbs of salt into 32-35 gallons of water and mix well.

Spray: Don't forget to pre-mix contents in drum or tote! (See installation instructions)

Spray product with accelerator until desired thickness is achieved. (See Min Thickness Table) Spraying ratio is measured by volume and should be 90% bitumen to 10% salt water. (For every gallon of salt water, spray 9 gallons of bitumen) Once the membrane is dry to the touch, check for proper thickness. If necessary, spray another coat. Walls: 2nd Coat on vertical walls must be applied within 2-3 minutes. Otherwise wait until the next day before applying the 2nd coat. Floors: Apply 1st coat from lowest parts to highest parts of the floor. (So salt water will not flow onto un-sprayed areas!) To apply a 2nd coat, evacuate the water before spraying the second coat and spray the second coat within 2-3 minutes of the first coat. Otherwise wait until the next day between coats.

Quality Control

- Visually inspect all coated surfaces to ensure a full and proper coating application, especially at corners, drainage footings and other hard-to-reach areas.
- All unsatisfactory areas shall be repaired prior to final acceptance.

Protection of Installed Work

- The completed section shall be protected for the first 24 hours after application or until the surface is sufficiently cured. (The amount of drying time may vary depending on temperature and humidity conditions)
- Always protect the waterproofing from possible damage. Install the AVM Drain Board 6000 and appropriate drainage system. Refer to Technical Details, "Min Thickness Table" and "Installation Instructions for more info.

Availability and Cost

Contact AVM Industries or your approved applicator for pricing and availability.

Technical Services

Technical services are available by contacting our offices at: 888.414.1041 or 818.888.0050 or visit www.avmindustries.com

System Specifications

See next page.

The following coverages are based on controlled tests. Actual coverages may vary.

Technical Information		
Color	Emulsion: Dark brown. Membrane: black	
Specific Gravity	1 gr/cm ²	
Solid Content	60% +/- 2%	
Flash Point	Non-flammable	
Service Temperature	15°F-140°F (-10°C to +60°C)	
Application Temperature	40°F-100°F (+5°C to 40°C)	
Heat Stability	>194°F (>90°C)	ASTM D 2939
Cold Flexibility	-4°F (-20°C)	ASTM D 522
Low Temperature Flexibility and Crack Bridging	Pass, Conducted @ -15°F (-26°C)	ASTM D 836
Tensile Strength	>0.1 MPa (>14.2 psi)	ASTM D 412
Elongation at break	>1200%	ASTM D 412
Resistance to water pressure	>1 atm, 24 hr (>14.7 psi, 24 hr)	DIN 52123
Water vapor permeance	0.35 Perms	ASTM E 96
Recovery (at 800-900% elongation)	>85%	ASTM D 412
Creep At 212°F (100°C)	No Creep	DIN 52123
Resistance to Standing Water	Passed	ASTM D 2939
Bacterial Attack in soil 30 days @ 105°F (40°C)	Passed	ASTM D 3083
VOC (Volatile Organic Content)	20 Grams/Liter	
Crack bridging	>3/16" (>5mm)	IS 1731
Approvals / Certifications	ICC, LARR, ISO 9002, Green Label, I.Q. Net (International Certification Network)	

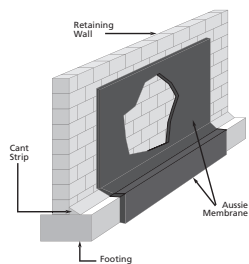
Mixing / Spraying Information	
Mixing Ratio	Accelerator (Salt water): Pour the 55 lbs of salt into 32-35 gallons of water
Spraying Ratio	1 Gallon accelerator (salt water) to 9 gallons of bitumen

For membrane thickness and drainage board requirements refer to the "Aussie II Min Thickness Table"

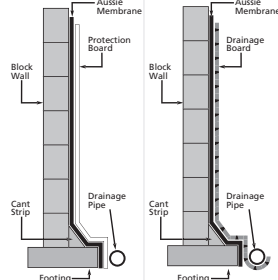
Coverage Tables (for U.S. and Metric Measurements)								
To Get	60 Mils Dry	90 Mils Dry	100 Mils Dry	120 Mils Dry	160 Mils Dry	180 Mils Dry	240 Mils Dry	270 Mils Dry
Apply	100 Mils Wet	150 Mils Wet	160 Mils Wet	200 Mils Wet	160 Mils Wet	300 Mils Wet	400 Mils Wet	450 Mils Wet
For 100 sqft	5.75 Gallons	8.75 Gallons	9.5 Gallons	11.5 Gallons	15 Gallons	17.25 Gallons	23 Gallons	26.25 Gallons
To Get	1.5 mm Dry	2.25 mm Dry	2.5 mm Dry	3.0 mm Dry	4.0 mm Dry	4.5 mm Dry	6.0 mm Dry	6.75 mm Dry
Apply	2.4 mm Wet	3.6 mm Wet	4.0 mm Wet	4.8 mm Wet	6.4 mm Wet	7.2 mm Wet	9.6 mm Wet	10.8 mm Wet
For M ²	2.4 kg/m ²	3.6 kg/m ²	4.0 kg/m ²	4.8 kg/m ²	6.5 kg/m ²	7.3 kg/m ²	9.6 kg/m ²	10.8 kg/m ²

Item / Component	Packaging	Approx Shipping Weights	VOC
AVM Primer 500	2.0/5.0 gal. pails	2.0/5.0 gal. 15/39 lbs.	15 Grams/Liter
AVM Aussie Membrane 502	264 Gal Totes	264.0 gal. 2,200 lbs / 1,000 kg (1-Ton)	19 Grams/Liter

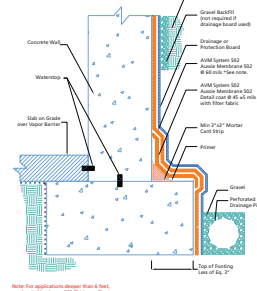
Retaining Wall with Aussie Membrane



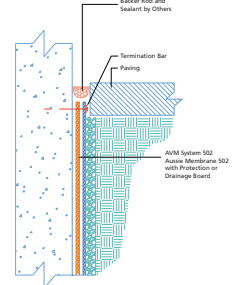
Block Walls with Aussie Membrane



Slab on Grade at Top of Footing



Termination at Grade



For a complete list of details in CAD or PDF, please visit our website at www.avmindustries.com.

AVM Industries, Inc.
8245 Remmet Ave, Canoga Park, CA 91304
888.414.1041 818.888.0050

Quality Waterproofing Products

www.avmindustries.com





AVM System 502 Aussie Membrane 502

2-Part Heavy Duty Below Grade Bituminous Waterproofing Membrane

ICC ESR-2503
L.A. RR#: 25550

Sections 071000 / 071400 / 071416
Fluid Applied Waterproofing

Product Name

Aussie Membrane 502
AVM System 502

Manufactured by

AVM Industries, Inc.
8245 Remmet Ave, Canoga Park, CA 91304
888.414.1041 818.888.0050
www.avmindustries.com

Product Description

The AVM Aussie Membrane 502 is a 2-part Water-Based rubber/bitumen liquid membrane modified with high performance rubberized polymers giving it excellent adhesion, which dries to a tough, black seamless flexible waterproof membrane. The Aussie Membrane 502 is a cold-applied liquid bitumen that exhibits excellent elongation and recovery properties. The AVM Aussie Membrane 502 has excellent long-term stability (maintains its properties of very long periods of time) un-like other below grade systems (including polyurethane based systems) that Crack and become brittle as they age.

Where to Use

Roofs and Decks with Pavers: Complete waterproofing system for wood or concrete decks where the Aussie Membrane 502 is the primary waterproofing membrane over living spaces with pavers or pedestal paver systems scheduled to be installed over the Aussie II waterproofing system.

Important note: For Green Roof Systems" please refer to the "Green Roof Systems" Tech Data Sheet.

Warranty

AVM Industries will warranty the installed membrane for a period of five (5) years. Longer warranties are also available. For complete warranty details, contact AVM Industries or consult with your applicator.

Delivery, Storage, and Handling

- Delivery of all the AVM System 502 materials to the job site must be in their original sealed containers, with manufacturer's name and label intact.
- Handle and store containers in accordance with printed instructions.
- Store at temperatures between 50°F and 90°F. Do not store materials in direct sunlight or where they may be damaged by water or rain.
- Failure to comply with the recommended storage conditions may result in premature deterioration of the product. For specific storage advice, please contact AVM Industries and/or its representatives.
- Keep all materials out of the reach of children.
- If irritation occurs during use, liberally flush affected areas with water. If irritation continues, see a physician immediately.

Project Conditions

- All surfaces to which the Aussie Membrane 502 is applied to must be sound and stable,

with an even finish and free from dust, loose debris, grease, curing agents, etc.

- The Aussie Membrane 502 may be applied to damp but not waterlogged surfaces (Green Concrete)
- Do not apply materials at temperatures below 40°F and falling or if precipitation is imminent. Do not apply materials in direct sunlight at temperatures above 100°F or rising.
- Warn personnel against hazards of materials to skin and eyes. Note other hazardous conditions on the job that might require special protective gear and or any other special protective or safety procedures.
- Protect adjacent surfaces which could be damaged during the application procedure.
- This system must not be used to cover Expansion Joints.

System Application

Read the AVM System 502 Installation Instructions Prior to Installation. Application instructions vary based on application surfaces. Following are common application procedures only. For specific application procedures, download the appropriate installation instructions.

Preparation

- Make sure concrete surfaces are even without holes, gaps, etc. Make sure substrate has no cracks larger than 1/16" wide. If applying over plywood substrates, make sure it's exterior grade plywood, min 5/8" thick, (No OSB), its sound and fully blocked.
- Over concrete, if necessary, apply a thin slurry coat using AVM Crete 6200. Over plywood, apply AVM Crete 6400 at a min of 1/4" thick to all plywood surfaces.
- Apply a 1"x1" mortar cant at 450 at horizontal-to-vertical transitions. Then apply a detailed coat. (See details)
- Mixing: Mix the product in the drum or tote by circulating it through the pump. For drums, mix each a min of 10 minutes, for totes, mix each a min of 15 minutes! Do not add or dilute with water!
- Priming: Spray a thin coat of the Aussie Membrane 502 without the accelerator as primer when needed.

Membrane Installation

Accelerator: Pour the 55 Lbs of salt into 32-35 gallons of water and mix well.

Spray: Don't forget to pre-mix contents in drum or tote! (See installation instructions)

Spray product with accelerator until desired thickness is achieved. Membrane should be 270 Mils dry with 2 Mat 800 fabrics inserted for reinforcement. If less, consult with engineer or AVM. (See Min Thickness Table and details for more information) Spraying ratio is measured by volume and should be 90% bitumen to 10% salt water. (For every gallon of salt water, spray 9 gallons of bitumen) Once the membrane is dry to the touch, check for proper thickness. If necessary, spray another coat. Walls: 2nd Coat on vertical walls must be applied within 2-3 minutes. Otherwise wait until the next day before applying the 2nd coat. Floors: Apply 1st coat from lowest parts to highest parts of the floor. (So salt water will not flow onto unsprayed areas!) To apply a 2nd coat, evacuate the water before spraying the second coat and spray the second coat within 2-3 minutes of the first coat. Otherwise wait until the next day between coats.

Quality Control

- Visually inspect all coated surfaces to ensure a full and proper coating application, especially at corners, drainage footings and other hard-to-reach areas.
- All unsatisfactory areas shall be repaired prior to final acceptance.

Protection of Installed Work

- The completed section shall be protected for the first 24 hours after application or until the surface is sufficiently cured. (The amount of drying time may vary depending on temperature and humidity conditions)
- Always protect the waterproofing from possible damage. The Roof Pavers System includes Protective Panels and/or special drainage boards. All are integral to the system. Refer to the job's specs and Installation Instructions for more info.

Availability and Cost

Contact AVM Industries or your approved applicator for pricing and availability.

Technical Services

Technical services are available by contacting our offices at: **888.414.1041** or **818.888.0050** or visit **www.avmindustries.com**

System Specifications

See next page.

The following coverages are based on controlled tests. Actual coverages may vary.

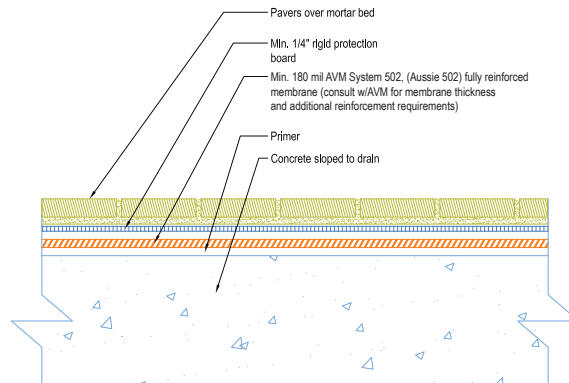
Technical Information		
Color	Emulsion: Dark brown. Membrane: black	
Specific Gravity	1 gr/cm ²	
Solid Content	60% +/- 2%	
Flash Point	Non-flammable	
Service Temperature	15°F-140°F (-10°C to +60°C)	
Application Temperature	40°F-100°F (+5°C to 40°C)	
Heat Stability	>194°F (>90°C)	ASTM D 2939
Cold Flexibility	-4°F (-20°C)	ASTM D 522
Low Temperature Flexibility and Crack Bridging	Pass, Conducted @ -15°F (-26°C)	ASTM D 836
Tensile Strength	>0.1 MPa (>14.2 psi)	ASTM D 412
Elongation at break	>1200%	ASTM D 412
Resistance to water pressure	>1 atm, 24 hr (>14.7 psi, 24 hr)	DIN 52123
Water vapor permeance	0.35 Perms	ASTM E 96
Recovery (at 800-900% elongation)	>85%	ASTM D 412
Creep At 212°F (100°C)	No Creep	DIN 52123
Resistance to Standing Water	Passed	ASTM D 2939
Bacterial Attack in soil 30 days @ 105°F (40°C)	Passed	ASTM D 3083
VOC (Volatile Organic Content)	20 Grams/Liter	
Crack bridging	>3/16" (>5mm)	IS 1731
Approvals / Certifications	ICC, LARR, ISO 9002, Green Label, I.Q. Net (International Certification Network)	

Mixing / Spraying Information	
Mixing Ratio	Accelerator (Salt water): Pour the 55 lbs of salt into 32-35 gallons of water
Spraying Ratio	1 Gallon accelerator (salt water) to 9 gallons of bitumen

For membrane thickness and drainage board requirements refer to the "Aussie II Min Thickness Table"

Coverage Tables (for U.S. and Metric Measurements)								
To Get	60 Mils Dry	90 Mils Dry	100 Mils Dry	120 Mils Dry	160 Mils Dry	180 Mils Dry	240 Mils Dry	270 Mils Dry
Apply	100 Mils Wet	150 Mils Wet	160 Mils Wet	200 Mils Wet	160 Mils Wet	300 Mils Wet	400 Mils Wet	450 Mils Wet
For 100 sqft	5.75 Gallons	8.75 Gallons	9.5 Gallons	11.5 Gallons	15 Gallons	17.25 Gallons	23 Gallons	26.25 Gallons
To Get	1.5 mm Dry	2.25 mm Dry	2.5 mm Dry	3.0 mm Dry	4.0 mm Dry	4.5 mm Dry	6.0 mm Dry	6.75 mm Dry
Apply	2.4 mm Wet	3.6 mm Wet	4.0 mm Wet	4.8 mm Wet	6.4 mm Wet	7.2 mm Wet	9.6 mm Wet	10.8 mm Wet
For M ²	2.4 kg/m ²	3.6 kg/m ²	4.0 kg/m ²	4.8 kg/m ²	6.5 kg/m ²	7.3 kg/m ²	9.6 kg/m ²	10.8 kg/m ²

Item / Component	Packaging	Approx Shipping Weights	VOC
AVM Primer 500	2.0/5.0 gal. pails	2.0/5.0 gal. 15/39 lbs.	15 Grams/Liter
AVM Aussie Membrane 502	264 Gal Totes	264.0 gal. 2,200 lbs / 1,000 kg (1-Ton)	19 Grams/Liter



For a complete list of details in CAD or PDF, please visit our website at www.avmindustries.com.

AVM Industries, Inc.
8245 Remmet Ave, Canoga Park, CA 91304
888.414.1041 818.888.0050

Quality Waterproofing Products



www.avmindustries.com



AVM System 502 Aussie Membrane 502

2-Part Heavy Duty Below Grade Bituminous Waterproofing Membrane

ICC ESR-2503
L.A. RR#: 25550

Sections 071000 / 071400 / 071416
Fluid Applied Waterproofing

Product Name

Aussie Membrane 502
AVM System 502

Manufactured by

AVM Industries, Inc.
8245 Remmet Ave, Canoga Park, CA 91304
888.414.1041 818.888.0050
www.avmindustries.com

Product Description

The AVM Aussie Membrane 502 is a 2-part Water-Based rubber/bitumen liquid membrane modified with high performance rubberized polymers giving it excellent adhesion, which dries to a tough, black seamless flexible waterproof membrane. The Aussie Membrane 502 is a cold-applied liquid bitumen that exhibits excellent elongation and recovery properties. The AVM Aussie Membrane 502 has excellent long-term stability (maintains its properties of very long periods of time) un-like other below grade systems (including polyurethane based systems) that Crack and become brittle as they age.

Where to Use

In-Between Slabs: For waterproofing in-between slabs.

Topping Slabs / Hard Rock: For waterproofing under topping slabs, hard rock and other sandwiched applications.

Important note: For "Paver Roof Systems" please refer to the "Paver Roof Systems" Tech Data Sheet.

Warranty

AVM Industries will warranty the installed membrane for a period of five (5) years. A ten (10) year warranty is also available. For complete warranty details, contact AVM Industries or consult with your applicator.

Delivery, Storage, and Handling

- Delivery of all the AVM System 502 materials to the job site must be in their original sealed containers, with manufacturer's name and label intact.
- Handle and store containers in accordance with printed instructions.
- Store at temperatures between 50°F and 90°F. Do not store materials in direct sunlight or where they may be damaged by water or rain.
- Failure to comply with the recommended storage conditions may result in premature deterioration of the product. For specific storage advice, please contact AVM Industries and/or its representatives.
- Keep all materials out of the reach of children.
- If irritation occurs during use, liberally flush affected areas with water. If irritation continues, see a physician immediately.

Project Conditions

- All surfaces to which the Aussie Membrane 502 is applied to must be sound and stable, with an even finish and free from dust, loose debris, grease, curing agents, etc.



- The Aussie Membrane 502 may be applied to damp but not waterlogged surfaces (Green Concrete)
- Do not apply materials at temperatures below 40°F and falling or if precipitation is imminent. Do not apply materials in direct sunlight at temperatures above 100°F or rising.
- Warn personnel against hazards of materials to skin and eyes. Note other hazardous conditions on the job that might require special protective gear and or any other special protective or safety procedures.
- Protect adjacent surfaces which could be damaged during the application procedure.
- This system must not be used to cover Expansion Joints.

System Application

Read the AVM System 502 Installation Instructions Prior to Installation. Application instructions vary based on application surfaces. Following are common application procedures only. For specific application procedures, download the appropriate installation instructions.

Preparation

- Make sure concrete surfaces are even without holes, gaps, etc. Make sure substrate has no cracks larger than 1/16" wide. (If applying over plywood substrates, refer to the "Topping Slabs Installation Instructions" for details)
- If necessary, apply a thin slurry coat using AVM Crete 6200.
- Apply a 1"x1" mortar cant at 45° at horizontal-to-vertical transitions. Then apply a detailed coat. (See details)
- Mixing: Mix the product in the drum or tote by circulating it through the pump. For drums, mix each a min of 10 minutes, for totes, mix each a min of 15 minutes! Do not add or dilute with water!
- Priming: Spray a thin coat of the Aussie Membrane 502 without the accelerator as primer when needed.

Membrane Installation

Accelerator: Pour the 55 lbs of salt into 32-35 gallons of water and mix well.

Spray: Don't forget to pre-mix contents in drum or tote! (See installation instructions) Spray product with accelerator until desired thickness is achieved. Membrane should be 240

Mils dry with 2 Mat 800 fabrics inserted for reinforcement. If less, consult with engineer or AVM.(See Min Thickness Table and details for more information) Spraying ratio is measured by volume and should be 90% bitumen to 10% salt water. (For every gallon of salt water, spray 9 gallons of bitumen) Once the membrane is dry to the touch, check for proper thickness. If necessary, spray another coat. Walls: 2nd Coat on vertical walls must be applied within 2-3 minutes. Otherwise wait until the next day before applying the 2nd coat. Floors: Apply 1st coat from lowest parts to highest parts of the floor. (So salt water will not flow onto unsprayed areas!) To apply a 2nd coat, evacuate the water before spraying the second coat and spray the second coat within 2-3 minutes of the first coat. Otherwise wait until the next day between coats.

Quality Control

- Visually inspect all coated surfaces to ensure a full and proper coating application, especially at corners, drainage footings and other hard-to-reach areas.
- All unsatisfactory areas shall be repaired prior to final acceptance.

Protection of Installed Work

- The completed section shall be protected for the first 24 hours after application or until the surface is sufficiently cured. (The amount of drying time may vary depending on temperature and humidity conditions)
- Always protect the waterproofing from possible damage. For pedestrian applications, install AVM Drain Board 9000. For vehicular applications, install AVM Drain Board 9900. Refer to Technical Details, "Min Thickness Table" and "Installation Instructions" for more info.

Availability and Cost

Contact AVM Industries or your approved applicator for pricing and availability.

Technical Services

Technical services are available by contacting our offices at: 888.414.1041 or 818.888.0050 or visit www.avmindustries.com

System Specifications

See next page.

The following coverages are based on controlled tests. Actual coverages may vary.

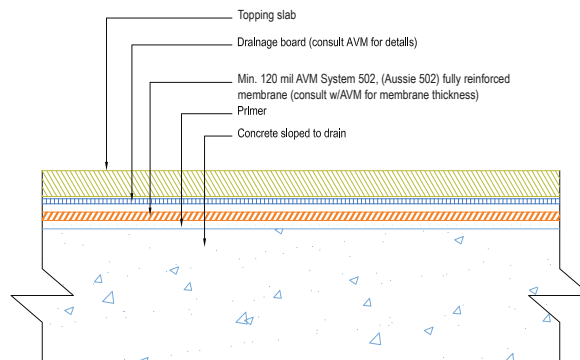
Technical Information		
Color	Emulsion: Dark brown. Membrane: black	
Specific Gravity	1 gr/cm ²	
Solid Content	60% +/- 2%	
Flash Point	Non-flammable	
Service Temperature	15°F-140°F (-10°C to +60°C)	
Application Temperature	40°F-100°F (+5°C to 40°C)	
Heat Stability	>194°F (>90°C)	ASTM D 2939
Cold Flexibility	-4°F (-20°C)	ASTM D 522
Low Temperature Flexibility and Crack Bridging	Pass, Conducted @ -15°F (-26°C)	ASTM D 836
Tensile Strength	>0.1 MPa (>14.2 psi)	ASTM D 412
Elongation at break	>1200%	ASTM D 412
Resistance to water pressure	>1 atm, 24 hr (>14.7 psi, 24 hr)	DIN 52123
Water vapor permeance	0.35 Perms	ASTM E 96
Recovery (at 800-900% elongation)	>85%	ASTM D 412
Creep At 212°F (100°C)	No Creep	DIN 52123
Resistance to Standing Water	Passed	ASTM D 2939
Bacterial Attack in soil 30 days @ 105°F (40°C)	Passed	ASTM D 3083
VOC (Volatile Organic Content)	20 Grams/Liter	
Crack bridging	>3/16" (>5mm)	IS 1731
Approvals / Certifications	ICC, LARR, ISO 9002, Green Label, I.Q. Net (International Certification Network)	

Mixing / Spraying Information	
Mixing Ratio	Accelerator (Salt water): Pour the 55 lbs of salt into 32-35 gallons of water
Spraying Ratio	1 Gallon accelerator (salt water) to 9 gallons of bitumen

For membrane thickness and drainage board requirements refer to the "Aussie II Min Thickness Table"

Coverage Tables (for U.S. and Metric Measurements)								
To Get	60 Mils Dry	90 Mils Dry	100 Mils Dry	120 Mils Dry	160 Mils Dry	180 Mils Dry	240 Mils Dry	270 Mils Dry
Apply	100 Mils Wet	150 Mils Wet	160 Mils Wet	200 Mils Wet	160 Mils Wet	300 Mils Wet	400 Mils Wet	450 Mils Wet
For 100 sqft	5.75 Gallons	8.75 Gallons	9.5 Gallons	11.5 Gallons	15 Gallons	17.25 Gallons	23 Gallons	26.25 Gallons
To Get	1.5 mm Dry	2.25 mm Dry	2.5 mm Dry	3.0 mm Dry	4.0 mm Dry	4.5 mm Dry	6.0 mm Dry	6.75 mm Dry
Apply	2.4 mm Wet	3.6 mm Wet	4.0 mm Wet	4.8 mm Wet	6.4 mm Wet	7.2 mm Wet	9.6 mm Wet	10.8 mm Wet
For M ²	2.4 kg/m ²	3.6 kg/m ²	4.0 kg/m ²	4.8 kg/m ²	6.5 kg/m ²	7.3 kg/m ²	9.6 kg/m ²	10.8 kg/m ²

Item / Component	Packaging	Approx Shipping Weights	VOC
AVM Primer 500	2.0/5.0 gal. pails	2.0/5.0 gal. 15/39 lbs.	15 Grams/Liter
AVM Aussie Membrane 502	264 Gal Totes	264.0 gal. 2,200 lbs / 1,000 kg (1-Ton)	19 Grams/Liter



For a complete list of details in CAD or PDF, please visit our website at www.avmindustries.com.

AVM Industries, Inc.
8245 Remmet Ave, Canoga Park, CA 91304
888.414.1041 818.888.0050

Quality Waterproofing Products



www.avmindustries.com



AVM System 502 Aussie Membrane 502

2-Part Heavy Duty Below Grade Bituminous Waterproofing Membrane

ICC ESR-2503
L.A. RR#: 25550

Sections 071000 / 071400 / 071416
Fluid Applied Waterproofing

Product Name

Aussie Membrane 502
AVM System 502

Manufactured by

AVM Industries, Inc.
8245 Remmet Ave, Canoga Park, CA 91304
888.414.1041 818.888.0050
www.avmindustries.com

Product Description

The AVM Aussie Membrane 502 is a 2-part Water-Based rubber/bitumen liquid membrane modified with high performance rubberized polymers giving it excellent adhesion, which dries to a tough, black seamless flexible waterproof membrane. The Aussie Membrane 502 is a cold-applied liquid bitumen that exhibits excellent elongation and recovery properties. The AVM Aussie Membrane 502 has excellent long-term stability (maintains its properties of very long periods of time) un-like other below grade systems (including polyurethane based systems) that Crack and become brittle as they age.

Where to Use

Under Slabs with/without Mud-Slabs: For creating a vapor/moisture barrier and/or waterproofing membrane underneath slabs with or without using a mud-slab.

Warranty

AVM Industries will warranty the installed membrane for a period of five (5) years. A ten (10) year warranty is also available. For complete warranty details, contact AVM Industries or consult with your applicator.

Delivery, Storage, and Handling

- Delivery of all the AVM System 502 materials to the job site must be in their original sealed containers, with manufacturer's name and label intact.
- Handle and store containers in accordance with printed instructions.
- Store at temperatures between 50°F and 90°F. Do not store materials in direct sunlight or where they may be damaged by water or rain.
- Failure to comply with the recommended storage conditions may result in premature deterioration of the product. For specific storage advice, please contact AVM Industries and/or its representatives.
- Keep all materials out of the reach of children.
- If irritation occurs during use, liberally flush affected areas with water. If irritation continues, see a physician immediately.

Project Conditions

- Over mud-slabs: All surfaces to which the Aussie Membrane 502 is applied to must be sound and stable, with an even finish and free from dust, loose debris, grease, curing agents, etc. Over Sand Beds: Refer to "Vapor Barriers Installation Instructions" for details.



- The Aussie Membrane 502 may be applied to damp but not waterlogged surfaces (Green Concrete)
- Do not apply materials at temperatures below 40°F and falling or if precipitation is imminent. Do not apply materials in direct sunlight at temperatures above 100°F or rising.
- Warn personnel against hazards of materials to skin and eyes. Note other hazardous conditions on the job that might require special protective gear and or any other special protective or safety procedures.
- Protect adjacent surfaces which could be damaged during the application procedure.
- This system must not be used to cover Expansion Joints.

System Application

Read the AVM System 502 Installation Instructions Prior to Installation. Application instructions vary based on application surfaces. Following are common application procedures only. For specific application procedures, download the appropriate installation instructions.

Preparation

- Make sure concrete surfaces are even without holes, gaps, etc. Make sure concrete substrates have no cracks larger than 1/16" wide. (If applying over sandbed substrates, refer to the "Vapor Barriers Installation Instructions" for details)
- If necessary, apply a thin slurry coat using AVM Crete 6200.
- Apply a 1"x1" mortar cant at 45° at horizontal-to-vertical transitions. Then apply a detailed coat. (See details)
- Mixing: Mix the product in the drum or tote by circulating it through the pump. For drums, mix each a min of 10 minutes, for totes, mix each a min of 15 minutes! Do not add or dilute with water!
- Priming: (Mud slabs only) Spray a thin coat of the Aussie Membrane 502 without the accelerator as primer when needed.

Membrane Installation

Accelerator: Pour the 55 lbs of salt into 32-35 gallons of water and mix well.

Spray: Don't forget to pre-mix contents in drum or tote! (See installation instructions)

Spray product with accelerator until desired thickness is achieved. (See Min Thickness Table) Spraying ratio is measured by volume and should be 90% bitumen to 10% salt water. (For every gallon of salt water, spray 9 gallons of bitumen) Once the membrane is dry to the touch, check for proper thickness. If necessary, spray another coat. Walls: 2nd Coat on vertical walls must be applied within 2-3 minutes. Otherwise wait until the next day before applying the 2nd coat. Floors: Apply 1st coat from lowest parts to highest parts of the floor. (So salt water will not flow onto un-sprayed areas!) To apply a 2nd coat, evacuate the water before spraying the second coat and spray the second coat within 2-3 minutes of the first coat. Otherwise wait until the next day between coats.

Quality Control

- Visually inspect all coated surfaces to ensure a full and proper coating application, especially at corners, drainage footings and other hard-to-reach areas.
- All unsatisfactory areas shall be repaired prior to final acceptance.

Protection of Installed Work

- The completed section shall be protected for the first 24 hours after application or until the surface is sufficiently cured. (The amount of drying time may vary depending on temperature and humidity conditions)
- Always protect the waterproofing from possible damage. For pedestrian applications, install AVM Drain Board 9000. For vehicular applications, install AVM Drain Board 9900. Refer to Technical Details, "Min Thickness Table" and "Installation Instructions" for more info.

Availability and Cost

Contact AVM Industries or your approved applicator for pricing and availability.

Technical Services

Technical services are available by contacting our offices at: 888.414.1041 or 818.888.0050 or visit www.avmindustries.com

System Specifications

See next page.

The following coverages are based on controlled tests. Actual coverages may vary.

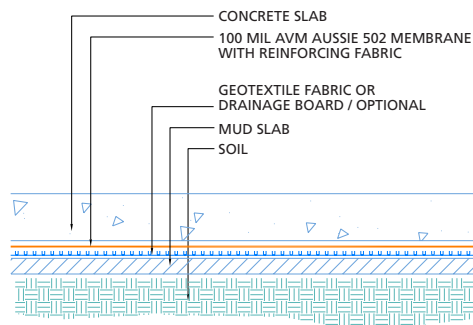
Technical Information		
Color	Emulsion: Dark brown. Membrane: black	
Specific Gravity	1 gr/cm ²	
Solid Content	60% +/- 2%	
Flash Point	Non-flammable	
Service Temperature	15°F-140°F (-10°C to +60°C)	
Application Temperature	40°F-100°F (+5°C to 40°C)	
Heat Stability	>194°F (>90°C)	ASTM D 2939
Cold Flexibility	-4°F (-20°C)	ASTM D 522
Low Temperature Flexibility and Crack Bridging	Pass, Conducted @ -15°F (-26°C)	ASTM D 836
Tensile Strength	>0.1 MPa (>14.2 psi)	ASTM D 412
Elongation at break	>1200%	ASTM D 412
Resistance to water pressure	>1 atm, 24 hr (>14.7 psi, 24 hr)	DIN 52123
Water vapor permeance	0.35 Perms	ASTM E 96
Recovery (at 800-900% elongation)	>85%	ASTM D 412
Creep At 212°F (100°C)	No Creep	DIN 52123
Resistance to Standing Water	Passed	ASTM D 2939
Bacterial Attack in soil 30 days @ 105°F (40°C)	Passed	ASTM D 3083
VOC (Volatile Organic Content)	20 Grams/Liter	
Crack bridging	>3/16" (>5mm)	IS 1731
Approvals / Certifications	ICC, LARR, ISO 9002, Green Label, I.Q. Net (International Certification Network)	

Mixing / Spraying Information	
Mixing Ratio	Accelerator (Salt water): Pour the 55 lbs of salt into 32-35 gallons of water
Spraying Ratio	1 Gallon accelerator (salt water) to 9 gallons of bitumen

For membrane thickness and drainage board requirements refer to the "Aussie II Min Thickness Table"

Coverage Tables (for U.S. and Metric Measurements)								
To Get	60 Mils Dry	90 Mils Dry	100 Mils Dry	120 Mils Dry	160 Mils Dry	180 Mils Dry	240 Mils Dry	270 Mils Dry
Apply	100 Mils Wet	150 Mils Wet	160 Mils Wet	200 Mils Wet	160 Mils Wet	300 Mils Wet	400 Mils Wet	450 Mils Wet
For 100 sqft	5.75 Gallons	8.75 Gallons	9.5 Gallons	11.5 Gallons	15 Gallons	17.25 Gallons	23 Gallons	26.25 Gallons
To Get	1.5 mm Dry	2.25 mm Dry	2.5 mm Dry	3.0 mm Dry	4.0 mm Dry	4.5 mm Dry	6.0 mm Dry	6.75 mm Dry
Apply	2.4 mm Wet	3.6 mm Wet	4.0 mm Wet	4.8 mm Wet	6.4 mm Wet	7.2 mm Wet	9.6 mm Wet	10.8 mm Wet
For M ²	2.4 kg/m ²	3.6 kg/m ²	4.0 kg/m ²	4.8 kg/m ²	6.5 kg/m ²	7.3 kg/m ²	9.6 kg/m ²	10.8 kg/m ²

Item / Component	Packaging	Approx Shipping Weights	VOC
AVM Primer 500	2.0/5.0 gal. pails	2.0/5.0 gal. 15/39 lbs.	15 Grams/Liter
AVM Aussie Membrane 502	264 Gal Totes	264.0 gal. 2,200 lbs / 1,000 kg (1-Ton)	19 Grams/Liter



For a complete list of details in CAD or PDF, please visit our website at www.avmindustries.com.

AVM Industries, Inc.
8245 Remmet Ave, Canoga Park, CA 91304
888.414.1041 818.888.0050

Quality Waterproofing Products



www.avmindustries.com