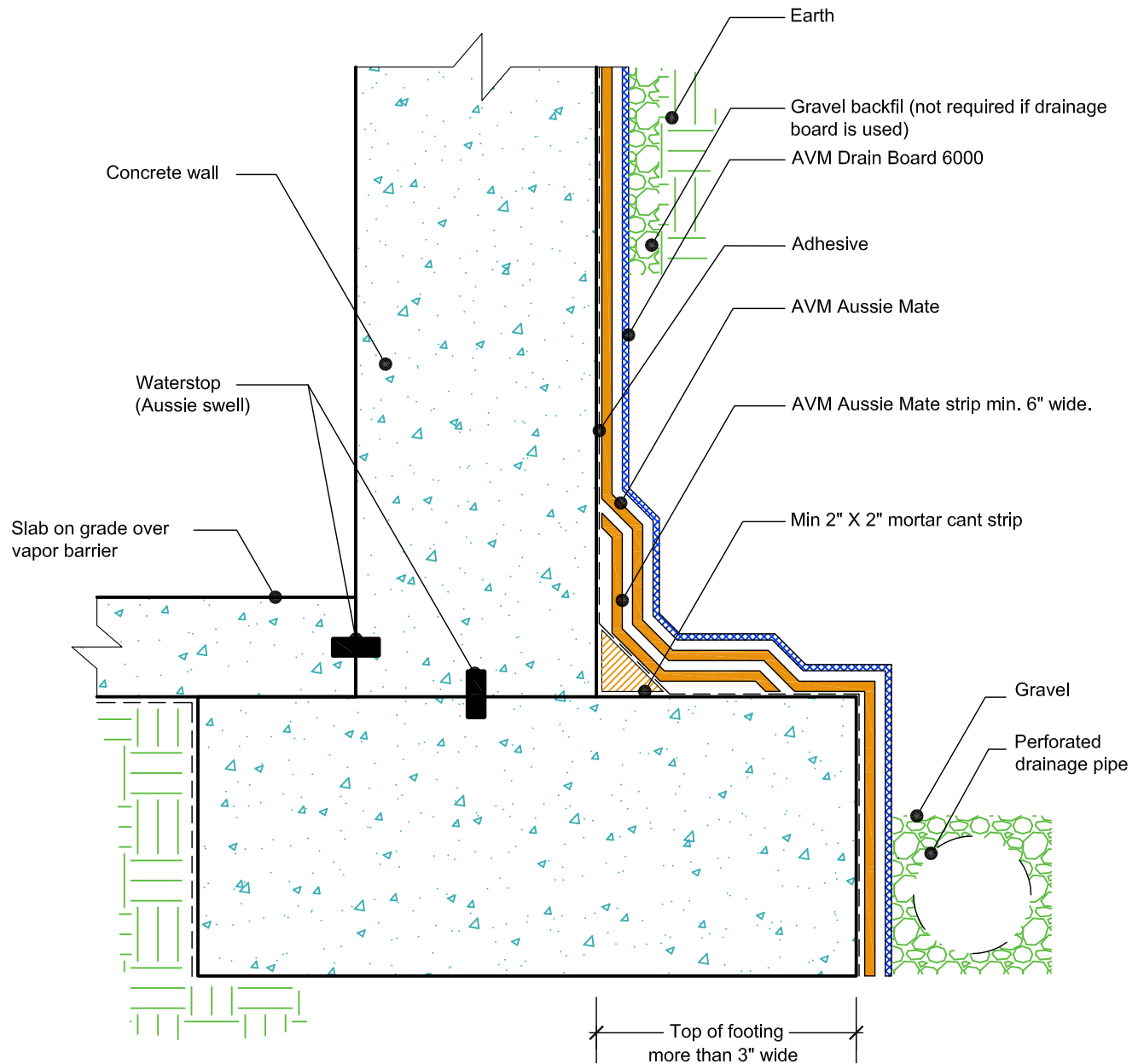


DETAIL #:
AVM-AUSSIE-MATE-0002-C

AVM SYSTEM 580/582/585

AUSSIE MATE®

Retaining Walls
Slab on Grade at Top of Footing
AVM AUSSIE MATE®
Bituminous Sheet Waterproofing.



NOTES:

1. Aussie Mate® Membranes are heavy duty bituminous waterproofing sheet membranes for Below-Grade waterproofing applications. Aussie Mate® 580-AL and 582-AL are UV stable, 60-mil membranes with an aluminum protection layer. Aussie Mate® 585-CW is a cold weather membrane that can be installed at temperatures as low as 25°F (-4°C).
2. For appropriate drainage/protection, use AVM Drain Board 6000.
3. Contact AVM if no drain board or protection board is specified.
4. Only AVM approved liquid adhesives or primers may be used. (water-based and solvent-based adhesives/primers are available)
5. AVM's "Bottom Drain 12" may be accepted in lieu of the perforated drainage pipe (French Drain). Check local building codes for approval.
6. Exposed top of footing is More than 3"
7. Inside corner (Wall-to-Footing) shown with Water Stop (Aussie Swell®)
8. All Aussie Mate overlaps must be minimum 2.5".

AVM Industries, Inc.
8245 Remmet Ave, Canoga Park, CA 91304

Quality Waterproofing Products

888.414.1041 818.888.0050
www.avmindustries.com

FILE NAME:
AUSSIE-MATE-0002-C-Retaining-Walls-Slab-On-Grade-At-Top-Of-Footing-CS

Revision Date: 2/19/2018
Protected by Copyright © AVM Industries, Inc.