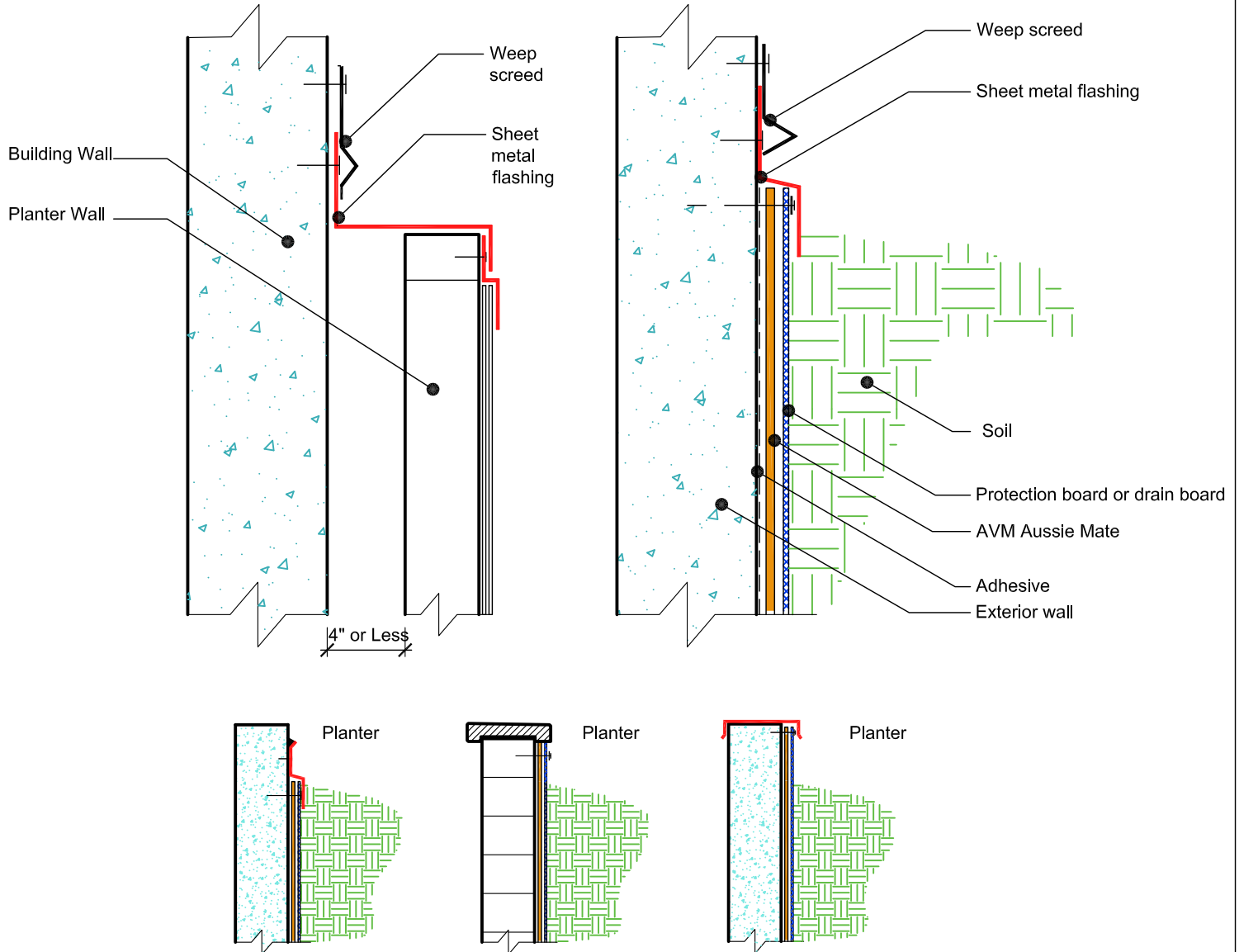


DETAIL #:
 AUSSIE-MATE-6002-C
 AVM SYSTEM 580/582/585
 AUSSIE MATE®

Terminations
 AVM AUSSIE MATE®
 Bituminous Sheet Waterproofing.



- NOTES:**
1. Aussie Mate® Membranes are heavy duty bituminous waterproofing sheet membranes for Below-Grade waterproofing applications. Aussie Mate® 580-AL and 582-AL are UV stable, 60-mil membranes with an aluminum protection layer, Aussie Mate® 585-CW is a cold weather membrane that can be installed at temperatures as low as 25°F (-4°C).
 2. For appropriate drainage/protection, use AVM Drain Board 6000.
 3. Contact AVM if no drain board or protection board is specified.
 4. Only AVM approved liquid adhesives or primers may be used. (water-based and solvent-based adhesives/primers are available)
 5. All Fasteners must be sealed with Sealant (Aussie Seal® M)

AVM Industries, Inc.
 8245 Remmet Ave, Canoga Park, CA 91304

Quality Waterproofing Products

888.414.1041 818.888.0050
 www.avmindustries.com

FILE NAME:
 AUSSIE-MATE-6002-C-Termination-Walls-CS

Revision Date: 2/19/2018
 Protected by Copyright @ AVM Industries, Inc.