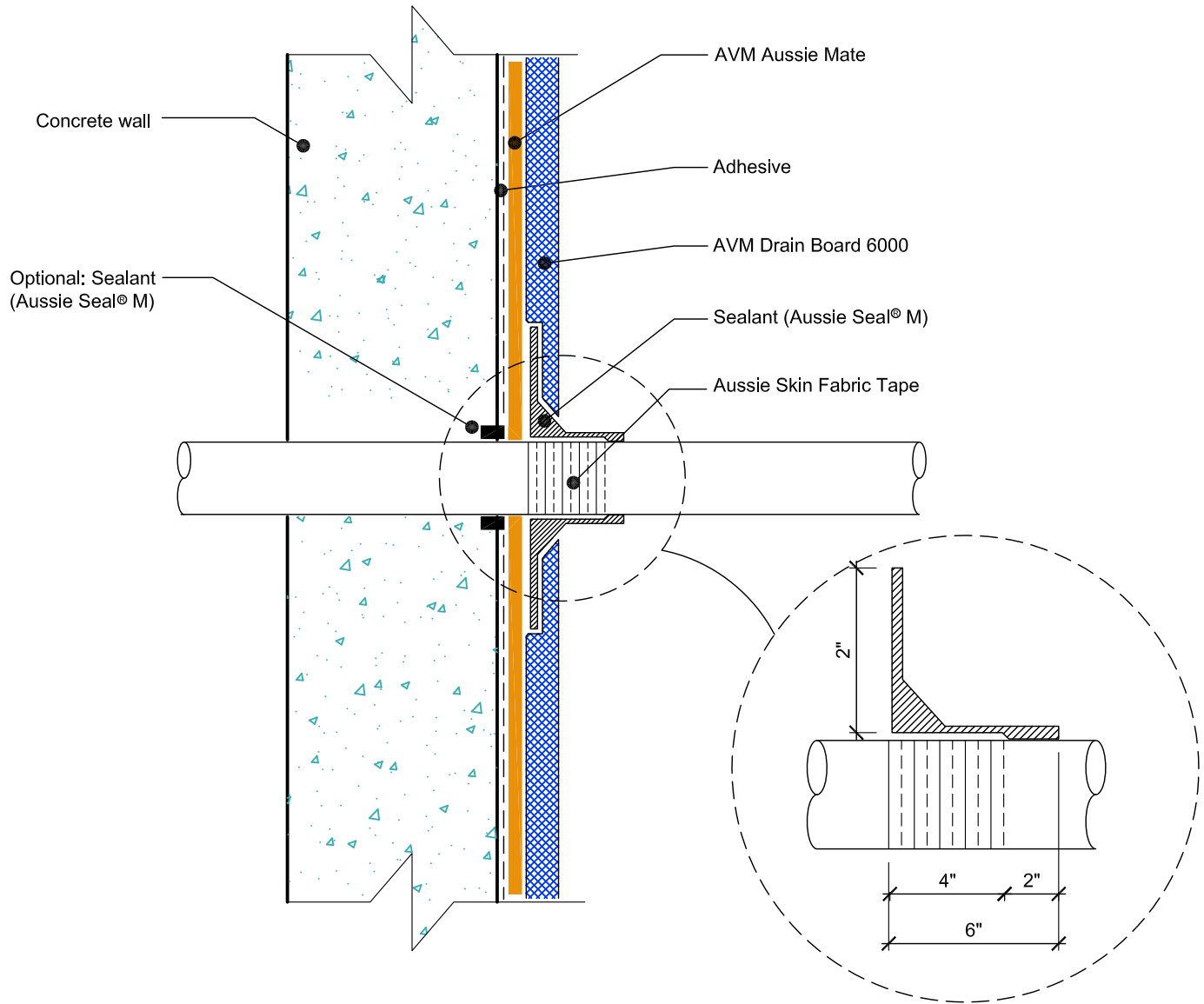


DETAIL #:
 AUSSIE-MATE-6508-C
 AVM SYSTEM 580/582/585
 AUSSIE MATE®

Pipe Penetration Thru Wall (Option 4)
 AVM AUSSIE MATE®
 Bituminous Sheet Waterproofing.



- NOTES:**
1. Aussie Mate® Membranes are heavy duty bituminous waterproofing sheet membranes for Below-Grade waterproofing applications. Aussie Mate® 580-AL and 582-AL are UV stable, 60-mil membranes with an aluminum protection layer. Aussie Mate® 585-CW is a cold weather membrane that can be installed at temperatures as low as 25°F (-4°C).
 2. For appropriate drainage/protection, use AVM Drain Board 6000.
 3. Contact AVM if no drain board or protection board is specified.
 4. Only AVM approved liquid adhesives or primers may be used. (water-based and solvent-based adhesives/primers are available)
 5. With Sealant (Aussie Seal® M) over Aussie Skin Fabric Tape around pipes.
 6. Aussie Mate must properly bond to pipe penetrations. Or, use Aussie Skin Fabric Tape+ Sealant (Aussie Seal® M) to seal pipes.
 7. Sealant must properly bond to pipe penetration. Best to use Aussie Skin Fabric Tape around pipe penetrations before applying Sealant.

AVM Industries, Inc.
 8245 Remmet Ave, Canoga Park, CA 91304

Quality Waterproofing Products

888.414.1041 818.888.0050
 www.avmindustries.com