

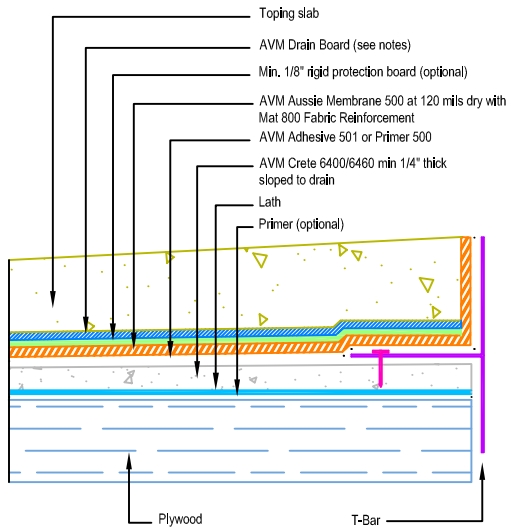
DETAIL # :
AVM-500-2572-P
AVM System 500
Aussie Membrane
VIEW TYPE:
Cut Sheet

Other Edge and Drain Details

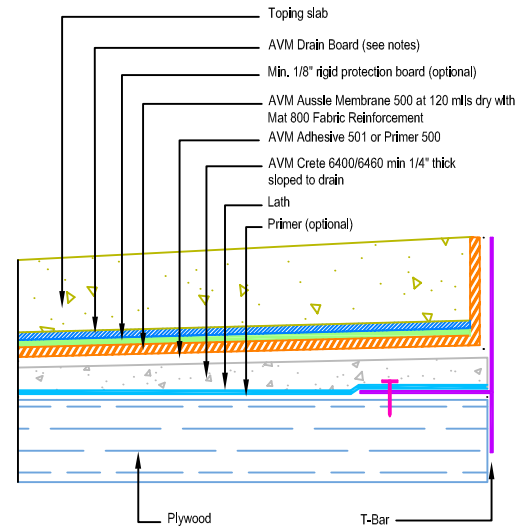
Topping Slabs Waterproofing on Plywood Substrates

AVM System 500 Aussie Membrane

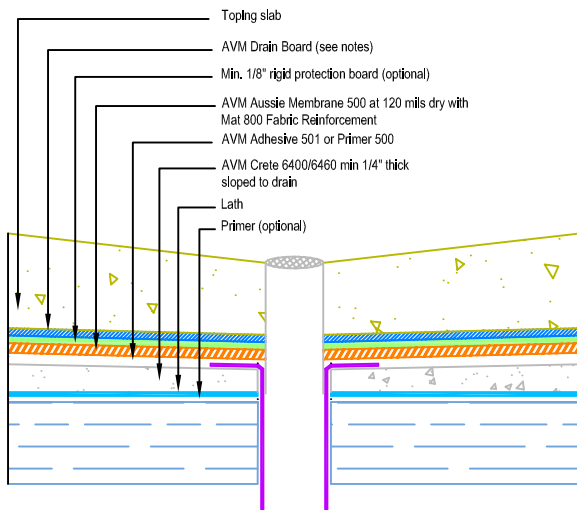
Fluid Applied Waterproofing (120 mil system with primer and reinforcement)



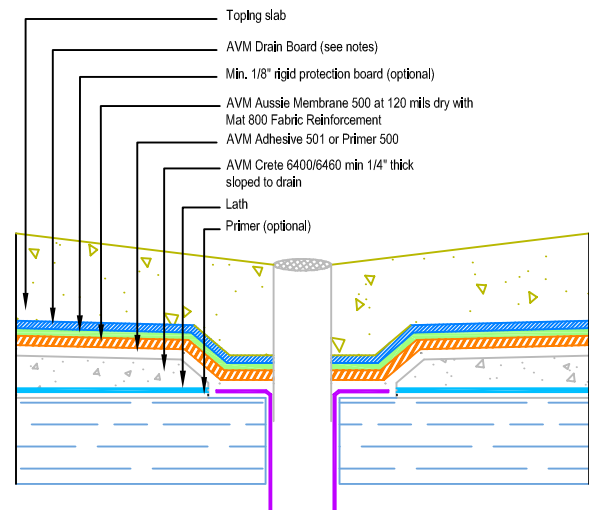
Slope Away from Edge Detail
Concrete Under Metals



Slope Away from Edge Detail
Concrete Over Metals



Drain Flange Sitting on
Crete 6400/6460



Drain Flange Sitting on
Plywood Substrate

Notes:

1. See drawing and notes on detail number AVM-500-2502-P for more information.
2. If water is to drain away from the edge into area floor drains, then edge metals do not require weep holes.
3. Reinforce the Aussie Membrane with AVM Mat 800 at all corners, metal transitions, penetrations, gaps, drains, etc.
4. Topping slabs for pedestrian traffic use AVM Drain Board 6000
5. Topping slabs above 4" thick or for vehicular traffic use AVM Drain Board 9000