

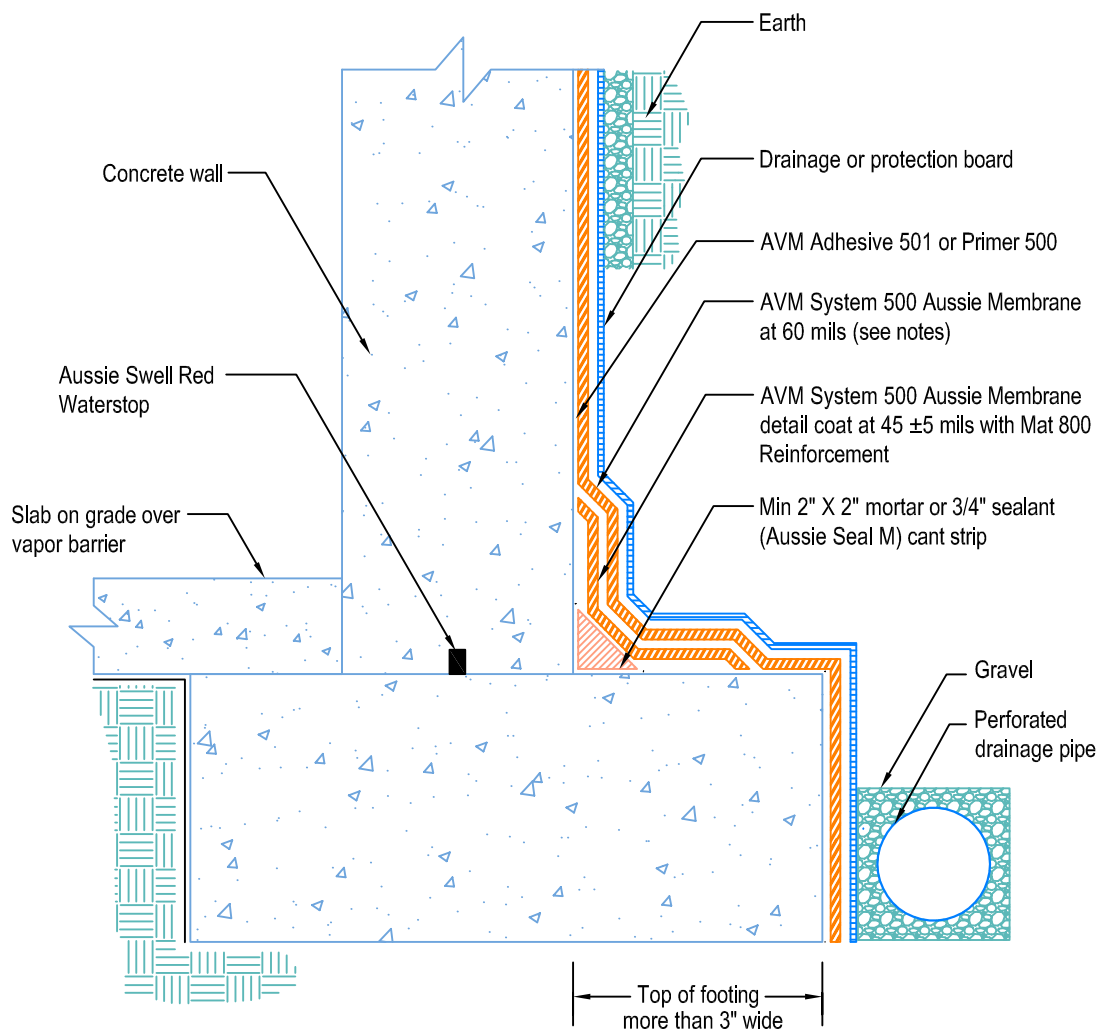
DETAIL # :
AVM-500-0002-C
AVM System 500
Aussie Membrane
VIEW TYPE:
Cut Sheet

Retaining Walls

Slab on Grade at Top of Footing

AVM System 500 Aussie Membrane

Fluid Applied Waterproofing



Notes:

1. Aussie Membrane 500 is a water-based bitumen (roller or brushed applied) for below-grade, between-slab, planters, roof-gardens and similar type waterproofing
2. In Non-Hydrostatic conditions: Min 60 Mills Dry Film Thickness (DFT). In Hydrostatic conditions: Min 90 Mills Dry Film Thickness (DFT)
3. Some installations and warranties require thicker installations and/or fabric reinforcement. Consult AVM for details.
4. Contact AVM if no drain board or protection board is specified
5. Prime with AVM Adhesive 501 (solvent-based primer) or Primer 500 (water-based primer)
6. AVM's "bottom drain 12" may be accepted in lieu of the perforated drainage pipe (French drain.) Check local building codes for approval.
7. Exposed top of footing is more than 3".
8. Inside corner (wall-to-footing) shown with water stop

AVM Industries, Inc.
8245 Remmet Ave, Canoga Park, CA 91304

Quality Waterproofing Products

888.414.1041 818.888.0050
www.avmindustries.com

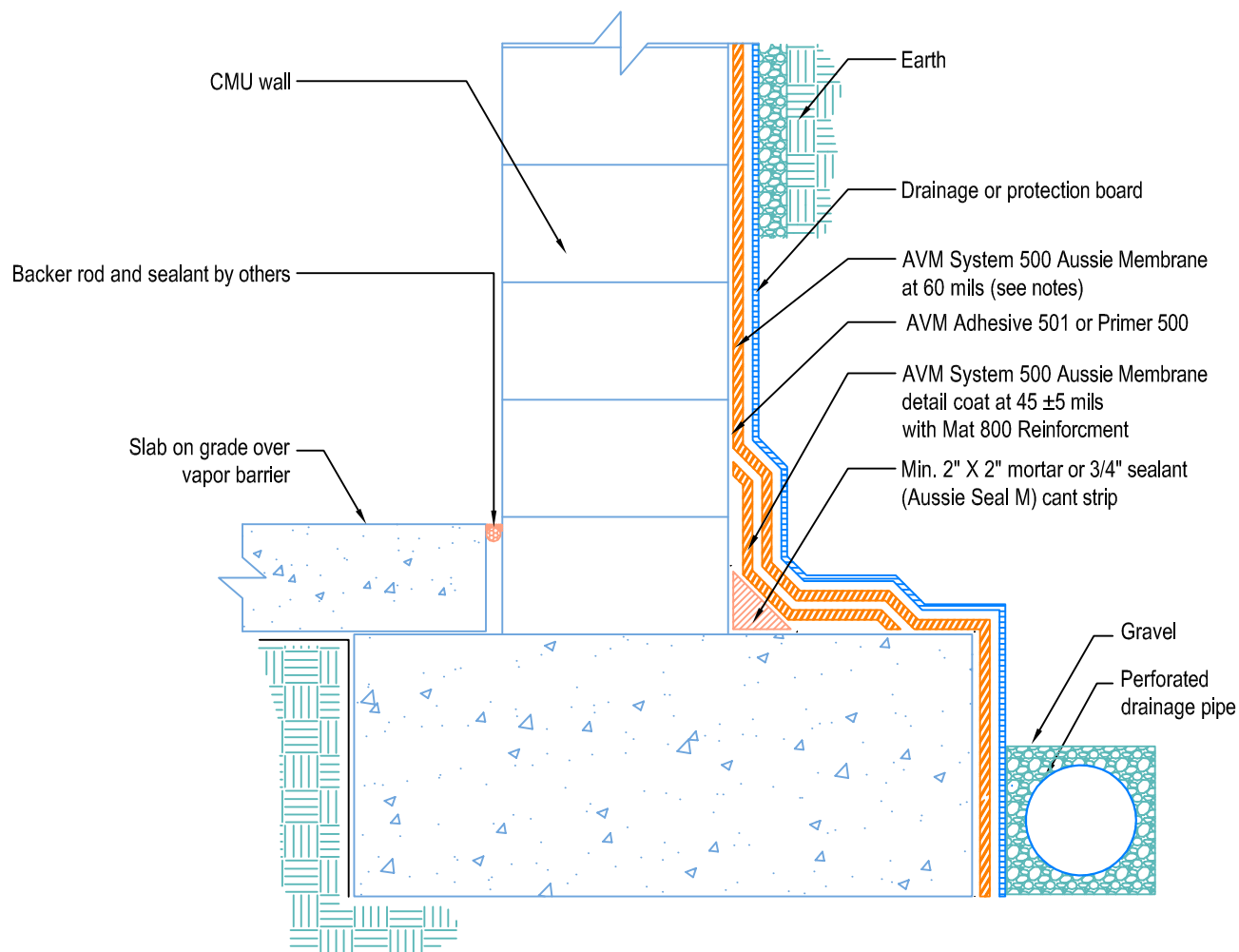
DETAIL # :
AVM-500-0004-C
AVM System 500
Aussie Membrane
VIEW TYPE:
Cut Sheet

Retaining Walls

Slab on Grade at Top of Footing

AVM System 500 Aussie Membrane

Fluid Applied Waterproofing



Notes:

1. Aussie Membrane 500 is a water-based bitumen (roller or brushed applied) for below-grade, between-slab, planters, roof-gardens and similar type waterproofing.
2. In Non-Hydrostatic conditions: Min 60 Mils Dry Film Thickness (DFT). In Hydrostatic conditions: Min 90 Mils Dry Film Thickness (DFT) Some installations and warranties require thicker installations and/or fabric reinforcement. Consult AVM for details.
3. Contact AVM if no drain board or protection board is specified
4. AVM's "bottom drain 12" may be accepted in lieu of the perforated drainage pipe (French drain.) Check local building codes for approval.
5. Inside corner (wall-to-footing) shown with Aussie Membrane corner detail.

AVM Industries, Inc.
8245 Remmet Ave, Canoga Park, CA 91304

Quality Waterproofing Products

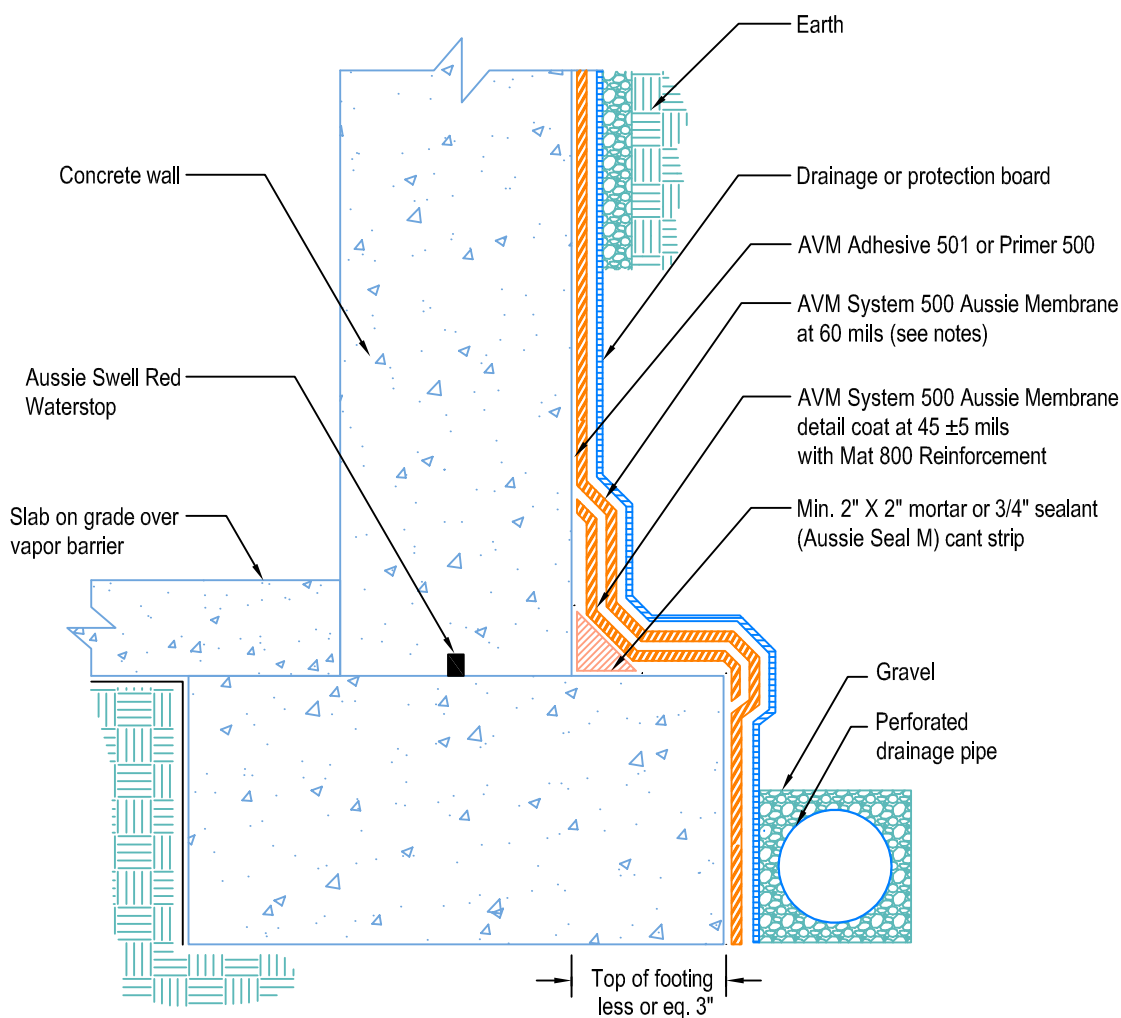
888.414.1041 818.888.0050
www.avmindustries.com

FILE NAME: 0500-0004-C-Retaining-Walls-Slab-On-Grade-At-Top-Of-Footing-CS.dwg

Revision Date: 3/26/2019
Protected by Copyright © AVM Industries, Inc.

DETAIL # :
AVM-500-0006-C
AVM System 500
Aussie Membrane
VIEW TYPE:
Cut Sheet

Retaining Walls Slab on Grade at Top of Footing AVM System 500 Aussie Membrane Fluid Applied Waterproofing



Notes:

1. Aussie Membrane 500 is a water-based bitumen (roller or brushed applied) for below-grade, between-slab, planters, roof-gardens and similar type waterproofing.
2. In Non-Hydrostatic conditions: Min 60 Mills Dry Film Thickness (DFT). In Hydrostatic conditions: Min 90 Mills Dry Film Thickness (DFT) Some installations and warranties require thicker installations and/or fabric reinforcement. Consult AVM for details.
3. Contact AVM if no drain board or protection board is specified
4. AVM's "bottom drain 12" may be accepted in lieu of the perforated drainage pipe (French drain.) Check local building codes for approval.
5. Exposed top of footing is less than 3".
6. Inside corner (wall-to-footing) shown with water stop.

AVM Industries, Inc.
8245 Remmet Ave, Canoga Park, CA 91304

Quality Waterproofing Products

888.414.1041 818.888.0050
www.avmindustries.com

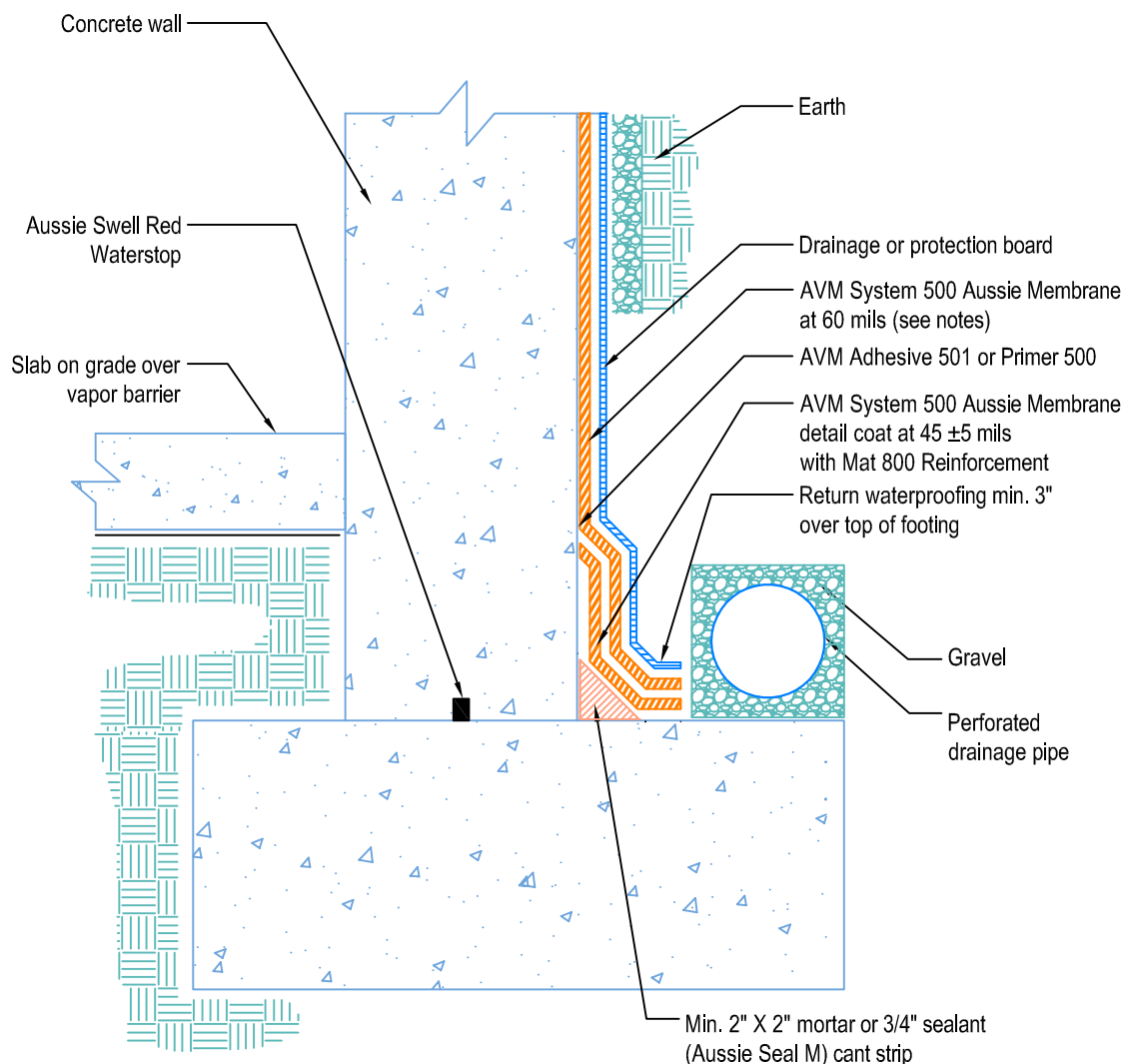
DETAIL # :
AVM-500-0008-C
AVM System 500
Aussie Membrane
VIEW TYPE:
Cut Sheet

Retaining Walls

Elevated Slab on Grade at Top of Footing

AVM System 500 Aussie Membrane

Fluid Applied Waterproofing



Notes:

1. Aussie Membrane 500 is a water-based bitumen (roller or brushed applied) for below-grade, between-slab, planters, roof-gardens and similar type waterproofing
2. In Non-Hydrostatic conditions: Min 60 Mils Dry Film Thickness (DFT). In Hydrostatic conditions: Min 90 Mils Dry Film Thickness (DFT) Some installations and warranties require thicker installations and/or fabric reinforcement. Consult AVM for details.
3. Contact AVM if no drain board or protection board is specified
4. AVM's "bottom drain 12" may be accepted in lieu of the perforated drainage pipe (French drain.) Check local building codes for approval.
5. Inside corner (wall-to-footing) shown with water stop

AVM Industries, Inc.
8245 Remmet Ave, Canoga Park, CA 91304

Quality Waterproofing Products

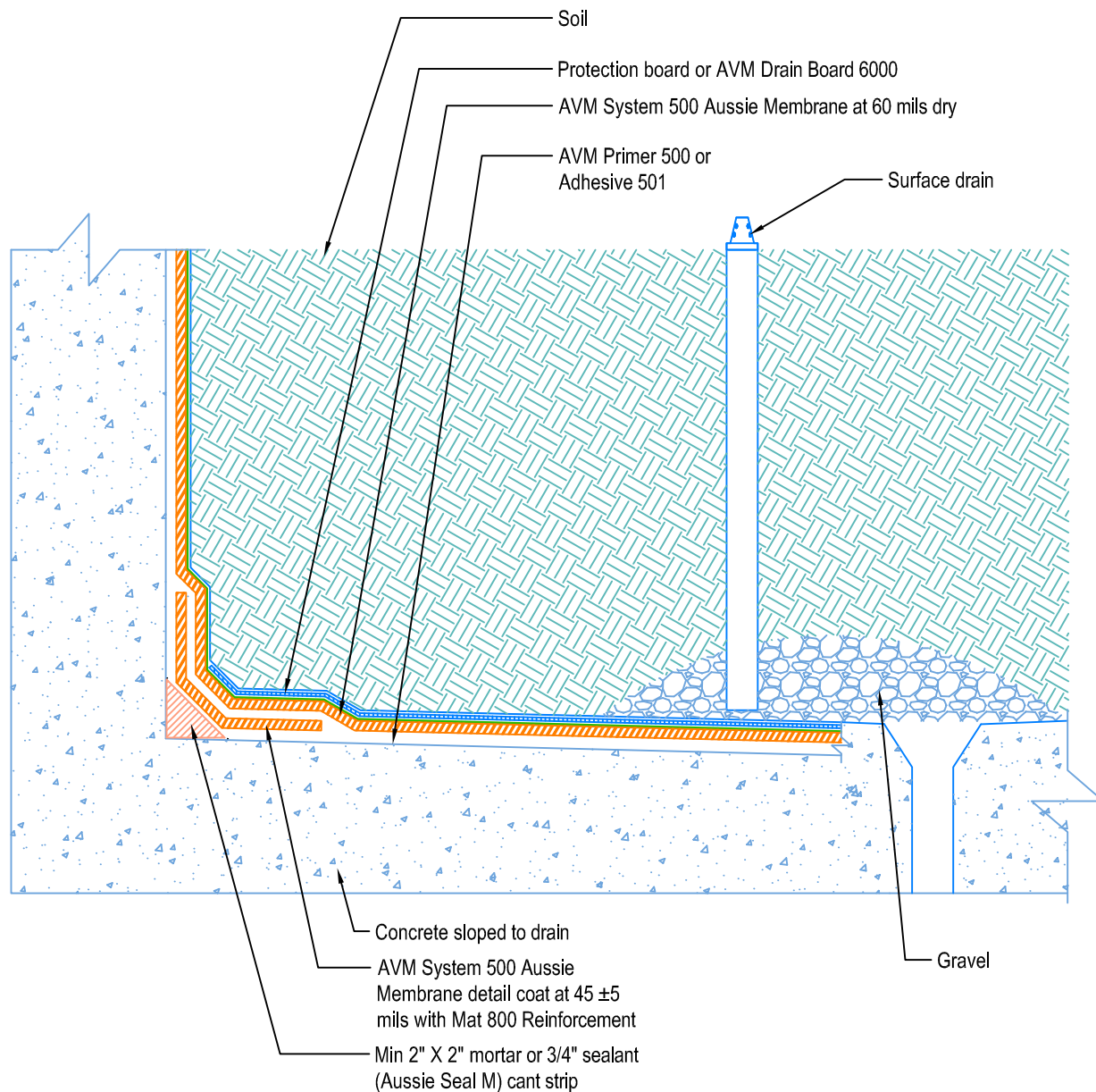
888.414.1041 818.888.0050
www.avmindustries.com

DETAIL # :
AVM-500-1502-C
AVM System 500
Aussie Membrane
VIEW TYPE:
Cut Sheet

Planter Basic Detail

AVM System 500 Aussie Membrane

Fluid Applied Waterproofing

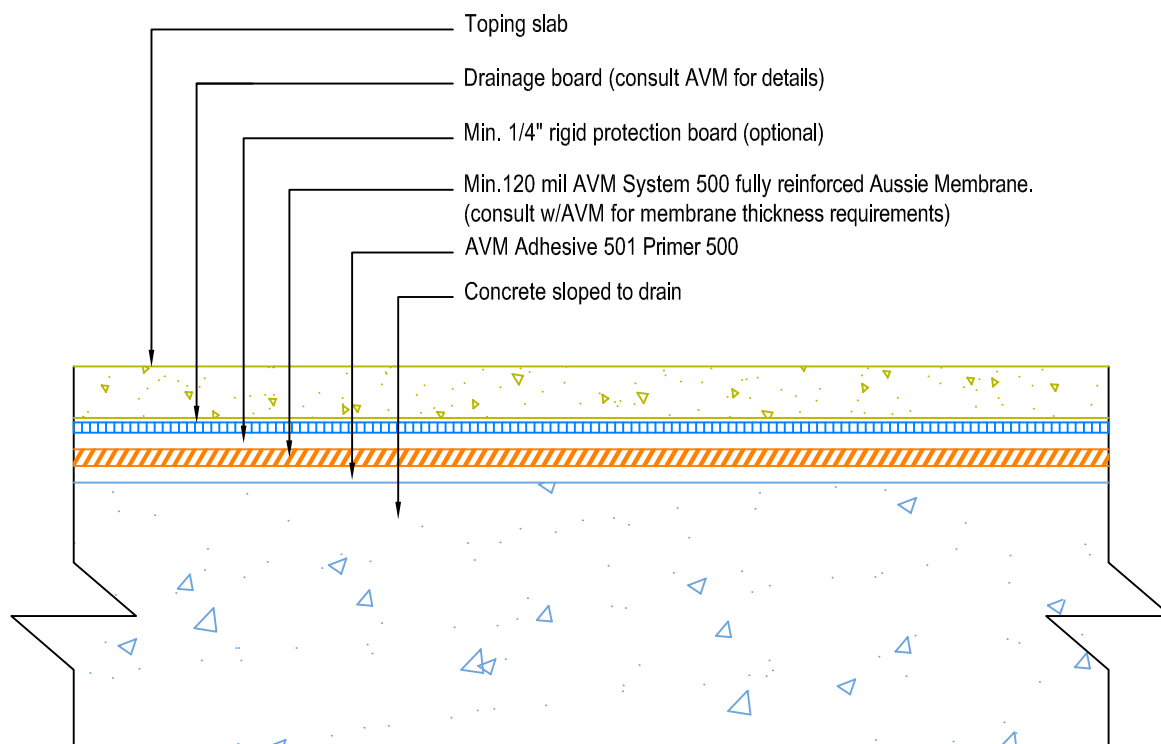


Notes:

1. Aussie Membrane 500 is a Water-Based Bitumen (Roller or Brush Applied) for Below-Grade, Between-Slab, Planters, Roof-Gardens and similar type Waterproofing.
2. Some installations and warranties require thicker installations and/or fabric reinforcement. Consult AVM for details.
3. Contact AVM if no drain board or protection board is specified.
4. Prime with AVM Adhesive 501 (solvent-based primer) or Primer 500 (water-based primer)
5. Planters must have sufficient slope, sufficient drains and proper drainage systems to effectively evacuate excessive water.
6. All corners require fabric reinforced detail coat. All inside corners also require min 2"x2" mortar or ¾" sealant (Aussie Seal M) cant prior to installing the detail coat.
7. In planters, a root barrier may be required. Consult with Landscape Architect or contact AVM for details.

DETAIL # :
AVM-500-2002-C
AVM System 500
Aussie Membrane
VIEW TYPE:
Cut Sheet

Topping Slab on Concrete Substrate over AVM System 500 Aussie Membrane Fluid Applied Waterproofing

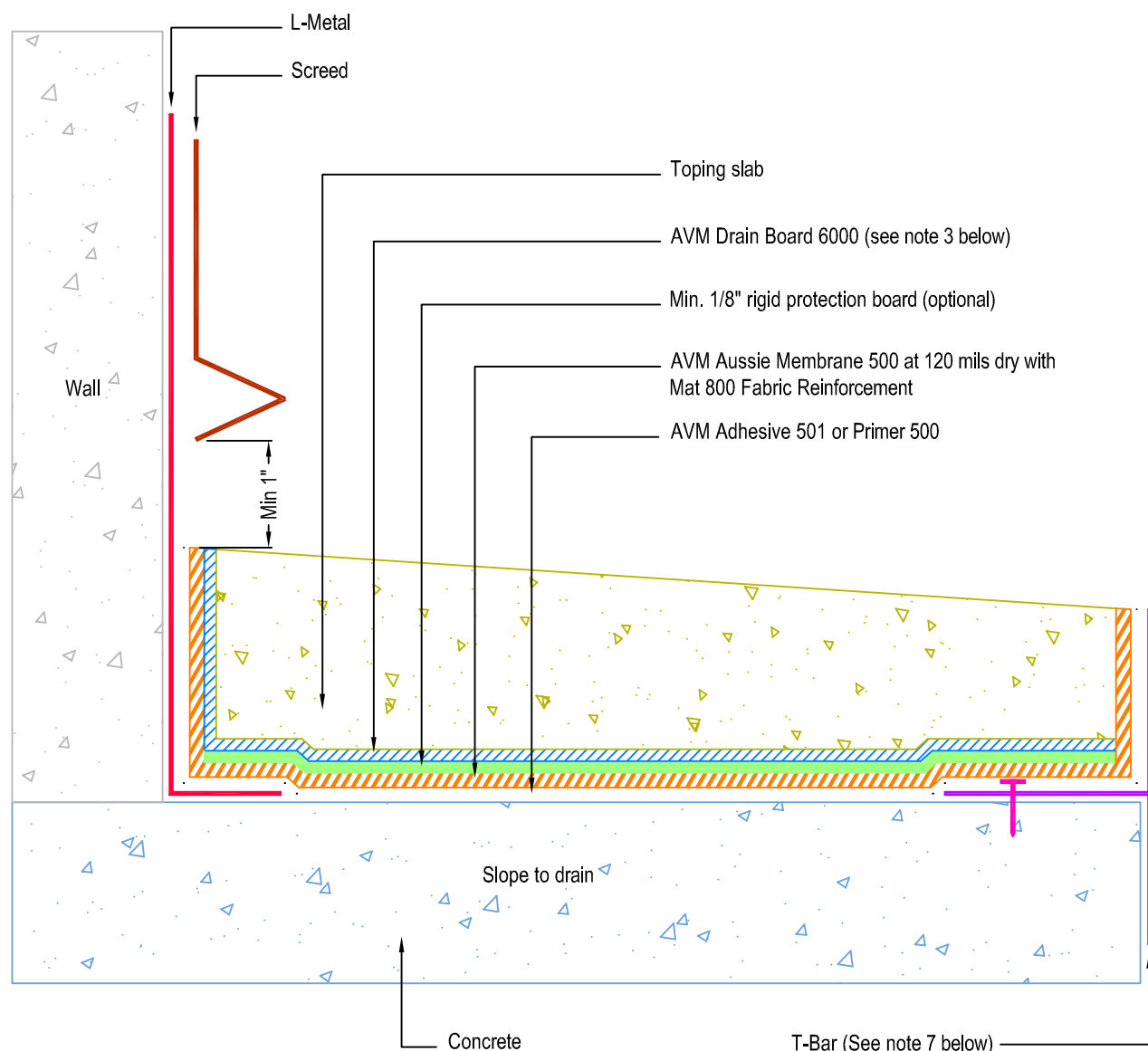


Notes:

1. Aussie Membrane 500 is a water-based bitumen (roller or brushed applied) for below-grade, between-slab, planters, roof-gardens and similar type waterproofing
2. Contact AVM if no drain board or protection board is specified
3. Topping slabs for pedestrian traffic use AVM Drain Board 6000
4. Topping slabs for vehicular traffic use AVM Drain Board 9000
5. For extra protection, use asphaltic panels below the drainage boards.

DETAIL #:
AVM-500-2012-C
AVM System 500
Aussie Membrane
VIEW TYPE:
Cut Sheet

Topping Slab on Concrete Substrate over AVM System 500 Aussie Membrane with Drain Board, Fluid Applied Waterproofing (120 mil system with primer and reinforcement)



Notes:

1. Aussie Membrane 500 is a water-based bitumen (roller or brushed applied) for below-grade, between-slab, planters, roof-gardens and similar type waterproofing.
2. Contact AVM if no drain board is specified
3. For drainage/protection - use AVM Drain Board 6000. For topping slabs over 4" thick or vehicular applications, use AVM Drain Board 9000
4. This assembly is for pedestrian traffic use only. For vehicular applications and other heavy loads, contact AVM for approval.
5. For extra protection, use 1/8" or 1/4" thick asphaltic protective panels below the drain board.
6. Substrates must be sloped to drains and/or edges before membrane installation. (Min 1/4" per foot)
7. If water is to drain over the edge, then edge metals (if used) MUST have sufficient weep holes (at least every 6") and must be strong enough (thick enough) to act as a concrete form.
8. When drainage is over the edges, edge assemblies must allow for proper water evacuation. (None should trap water) Consult AVM for details.
9. Reinforce the Aussie Membrane with AVM Mat 800 at all corners, metal transitions, penetrations, gaps, drains, etc.
10. For extra protection, lay down 1/8" or 1/4" thick asphaltic protective panels before installing the drain board. (Required for topping slabs over 4" thick or vehicular applications)

AVM Industries, Inc.
8245 Remmet Ave, Canoga Park, CA 91304

Quality Waterproofing Products

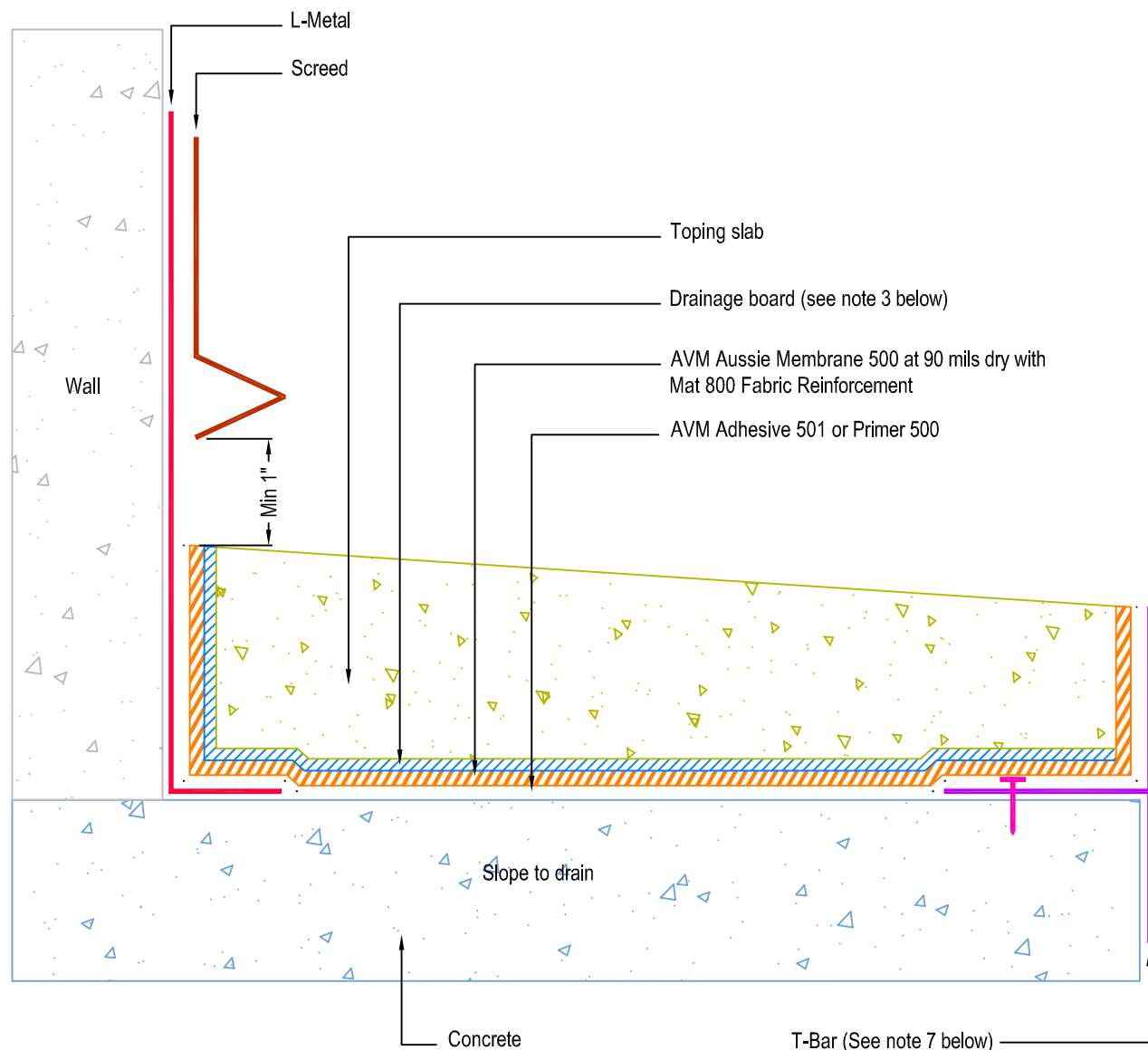
888.414.1041 818.888.0050
www.avmindustries.com

FILE NAME: 0500-2012-C-Topping-Slab-On-Concrete-HD-CS

Revision Date: 3/26/2019
Protected by Copyright © AVM Industries, Inc.

DETAIL # :
AVM-500-2022-C
AVM System 500
Aussie Membrane
VIEW TYPE:
Cut Sheet

Topping Slab on Concrete Substrate over AVM System 500 Aussie Membrane with Drain Board, Fluid Applied Waterproofing (90 mil system with primer and reinforcement)



Notes:

1. Aussie Membrane 500 is a water-based bitumen (roller or brushed applied) for below-grade, between-slab, planters, roof-gardens and similar type waterproofing.
2. Contact AVM if no drain board is specified
3. For drainage/protection - use AVM Drain Board 6000. For topping slabs over 4" thick or vehicular applications, use AVM Drain Board 9000
4. This assembly is for pedestrian traffic use only. For vehicular applications and other heavy loads, contact AVM for approval.
5. Substrates must be sloped to drains and/or edges before membrane installation. (Min 1/4" per foot)
6. If water is to drain over the edge, then edge metals (if used) MUST have sufficient weep holes (at least every 6") and must be strong enough (thick enough) to act as a concrete form.
7. When drainage is over the edges, edge assemblies must allow for proper water evacuation. (None should trap water) Consult AVM for details.
8. Reinforce the Aussie Membrane with AVM Mat 800 at all corners, metal transitions, penetrations, gaps, drains, etc.
9. For extra protection, lay down 1/8" or 1/4" thick asphaltic protective panels before installing the drain board. (Required for topping slabs over 4" thick or vehicular applications)

AVM Industries, Inc.
8245 Remmet Ave, Canoga Park, CA 91304

Quality Waterproofing Products

888.414.1041 818.888.0050
www.avmindustries.com

FILE NAME: 0500-2022-C-Topping-Slab-On-Concrete-MD-CS

Revision Date: 3/26/2019
Protected by Copyright © AVM Industries, Inc.

DETAIL # :
AVM-500-2072-C
AVM System 500
Aussie Membrane
VIEW TYPE:
Cut Sheet

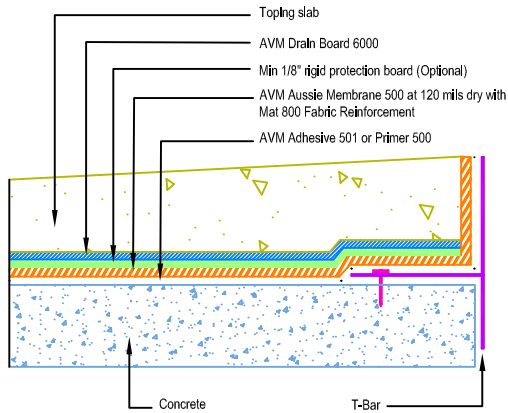
Other Edge and Drain Details

Topping Slabs Waterproofing on Concrete Substrates

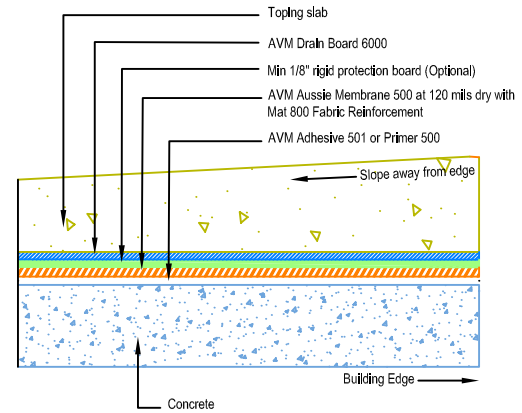
AVM System 500 Aussie Membrane

Fluid Applied Waterproofing

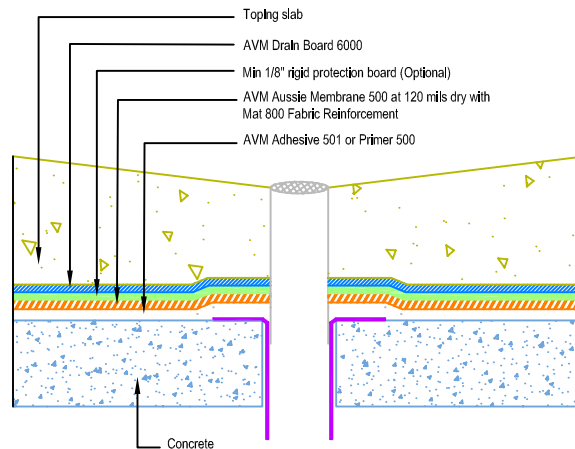
(120 mil system with primer and reinforcement)



Slope Away from Edge Detail with Edge Metals



Slope Away from Edge Detail without Edge Metals



Drain Detail on Concrete

Notes:

1. See drawing and notes on detail number AVM-500-2002-C for more information.
2. If water is to drain away from the edge into area floor drains, then edge metals do not require weep holes.
3. Reinforce the Aussie Membrane with AVM Mat 800 at all corners, metal transitions, penetrations, gaps, drains, etc.
4. A 2-part concrete drain with a bowl and a flange and built-in weep holes should be used. (Consult AVM for proper drain selection)

DETAIL # :
AVM-500-2074-C
AVM System 500
Aussie Membrane
VIEW TYPE:
Cut Sheet

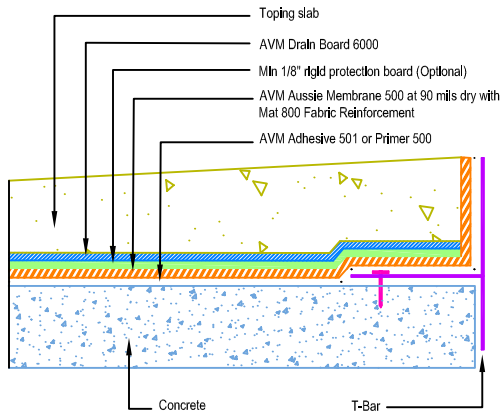
Other Edge and Drain Details

Topping Slabs Waterproofing on Concrete Substrates

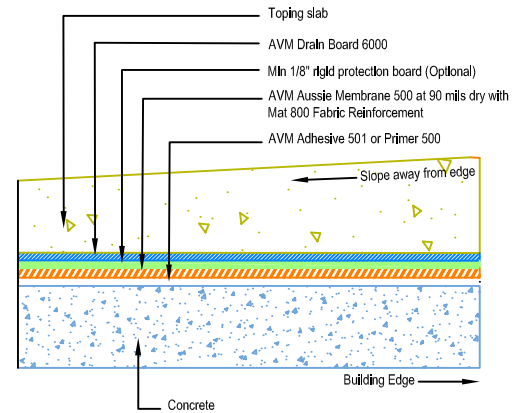
AVM System 500 Aussie Membrane

Fluid Applied Waterproofing

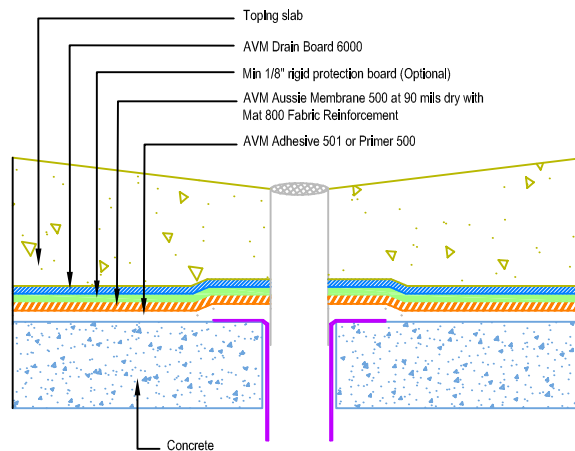
(90 mil system with primer and reinforcement)



Slope Away from Edge Detail with Edge Metals



Slope Away from Edge Detail without Edge Metals



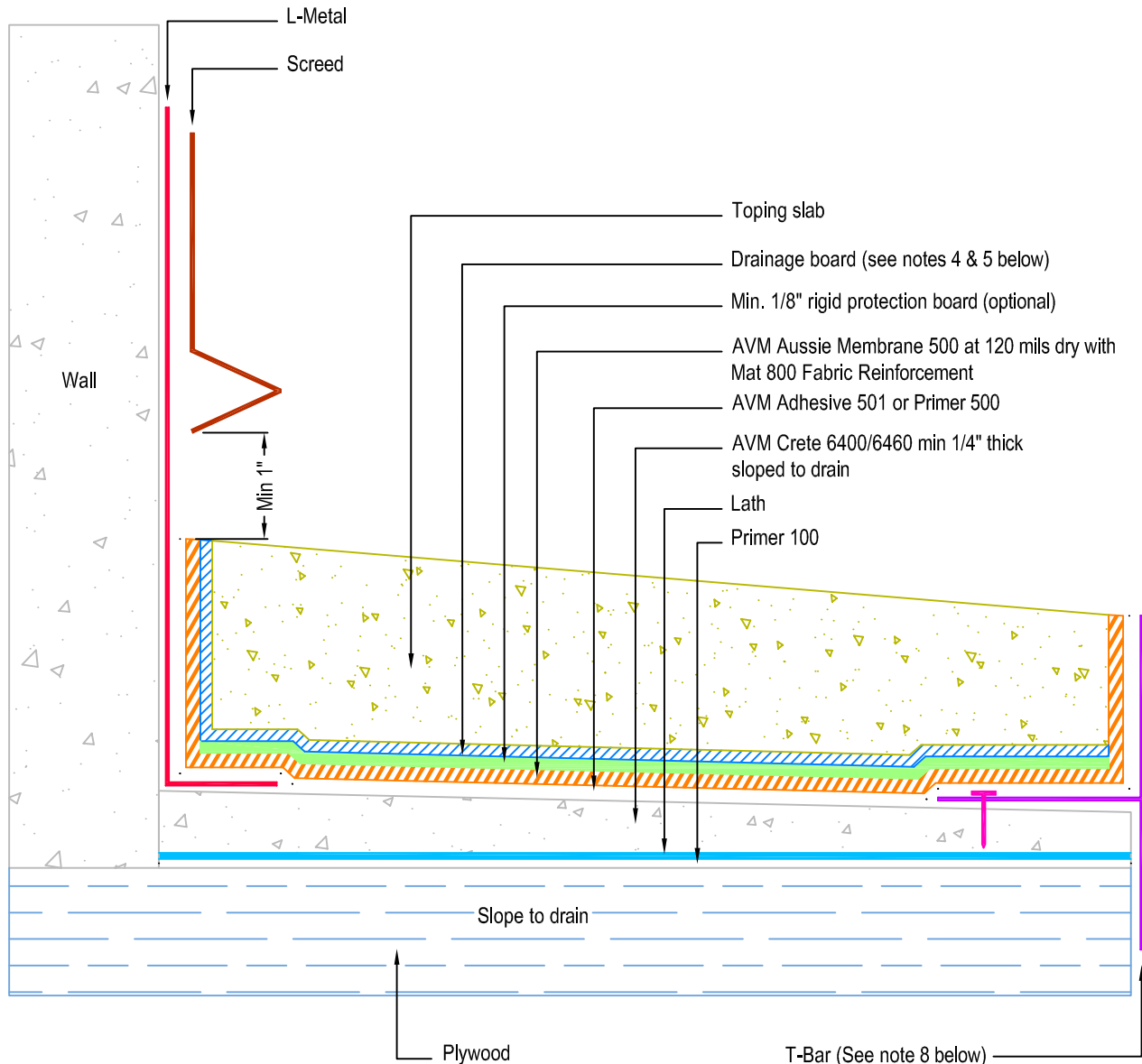
Drain Detail on Concrete

Notes:

1. See drawing and notes on detail number AVM-500-2002-C for more information.
2. If water is to drain away from the edge into area floor drains, then edge metals do not require weep holes.
3. Reinforce the Aussie Membrane with AVM Mat 800 at all corners, metal transitions, penetrations, gaps, drains, etc.
4. A 2-part concrete drain with a bowl and a flange and built-in weep holes should be used. (Consult AVM for proper drain selection)

DETAIL # :
AVM-500-2502-P
AVM System 500
Aussie Membrane
VIEW TYPE:
Cut Sheet

Topping Slab on Plywood Substrate over AVM System 500 Aussie Membrane with Drain Board & Thin Crete Base, Fluid Applied Waterproofing Concrete Under Metals (120 mil system with primer and reinforcement)



Notes:

1. Aussie Membrane 500 is a water-based bitumen (roller or brushed applied) for below-grade, between-slab, planters, roof-gardens and similar type waterproofing.
2. Contact AVM if no drain board is specified
3. Crete 6400/6460. Refer to the Crete 6400 or Crete 6460 Spec Sheets or Installation Instructions for more information
4. For drainage/protection - use AVM Drain Board 6000. For topping slabs over 4" thick or vehicular applications, use AVM Drain Board 9000.
5. This assembly is for pedestrian traffic use only. For vehicular applications and other heavy loads, contact AVM for approval.
6. For extra protection, use 1/8" or 1/4" thick rigid protection board below the drain board.
7. Substrates must be sloped to drains and/or edges before membrane installation. (Min 1/4" per foot)
8. If water is to drain over the edge, then edge metals MUST have sufficient weep holes (at least every 6") and must be strong enough (thick enough) to act as a concrete form.
9. When drainage is over the edges, edge assemblies must allow for proper water evacuation. (None should trap water) Consult AVM for details.
10. Reinforce the Aussie Membrane with AVM Mat 800 at all corners, metal transitions, penetrations, gaps, drains, etc.

AVM Industries, Inc.
8245 Remmet Ave, Canoga Park, CA 91304

Quality Waterproofing Products

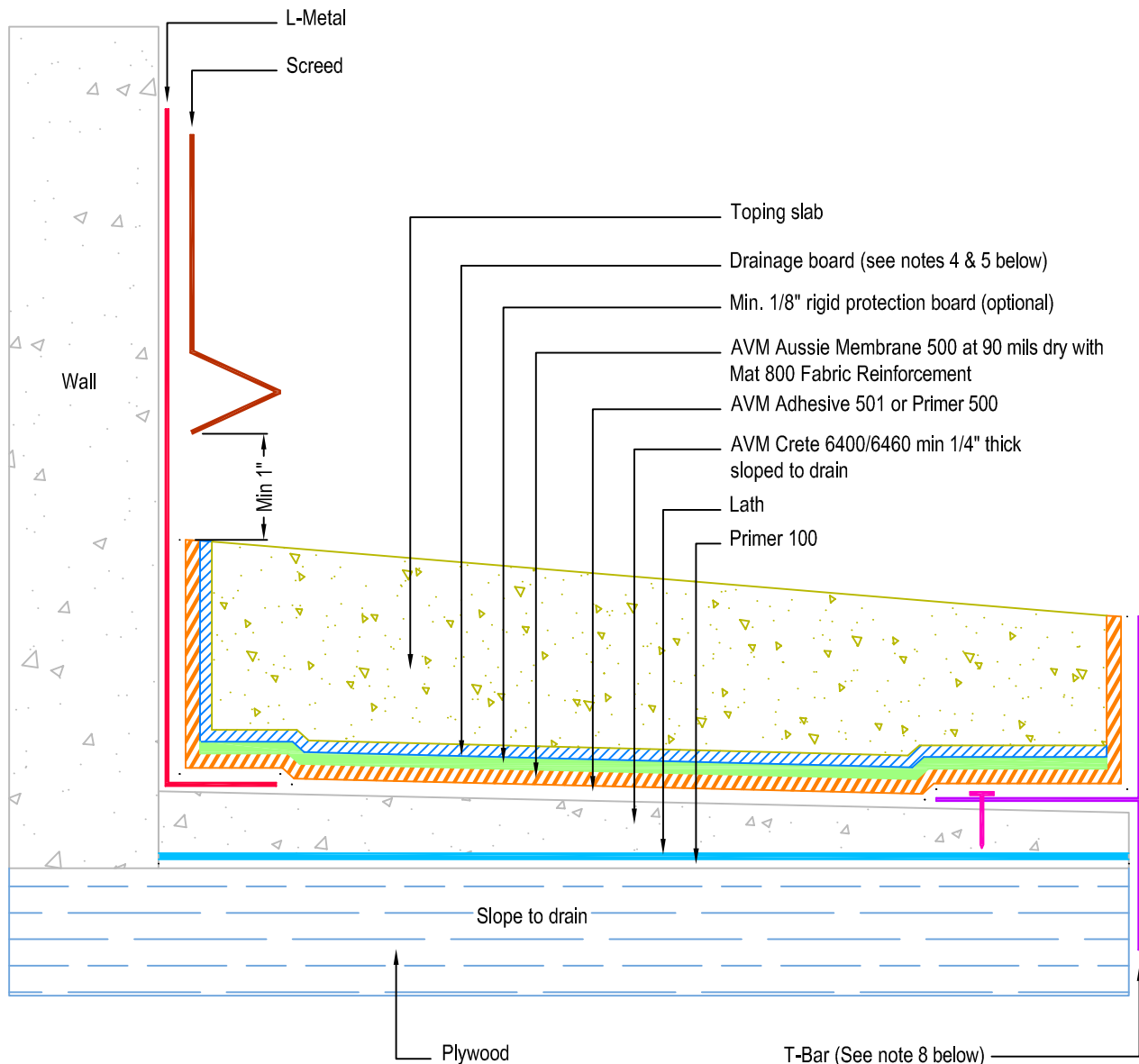
888.414.1041 818.888.0050
www.avmindustries.com

FILE NAME: 0500-2502-P-Topping-Slab-On-Plywood-HD-CS

Revision Date: 3/26/2018
Protected by Copyright © AVM Industries, Inc.

DETAIL # :
AVM-500-2522-P
AVM System 500
Aussie Membrane
VIEW TYPE:
Cut Sheet

Topping Slab on Plywood Substrate over AVM System 500 Aussie Membrane with Drain Board & Thin Crete Base, Fluid Applied Waterproofing Concrete Under Metals (90 mil system with primer and reinforcement)



Notes:

1. Aussie Membrane 500 is a water-based bitumen (roller or brushed applied) for below-grade, between-slab, planters, roof-gardens and similar type waterproofing.
2. Contact AVM if no drain board is specified
3. Crete 6400/6460. Refer to the Crete 6400 or Crete 6460 Spec Sheets or Installation Instructions for more information
4. For drainage/protection - use AVM Drain Board 6000. For topping slabs over 4\"
5. This assembly is for pedestrian traffic use only. For vehicular applications and other heavy loads, contact AVM for approval.
6. For extra protection, use 1/8\"
7. Substrates must be sloped to drains and/or edges before membrane installation. (Min 1/4\"
8. If water is to drain over the edge, then edge metals MUST have sufficient weep holes (at least every 6\") and must be strong enough (thick enough) to act as a concrete form.
9. When drainage is over the edges, edge assemblies must allow for proper water evacuation. (None should trap water) Consult AVM for details.
10. Reinforce the Aussie Membrane with AVM Mat 800 at all corners, metal transitions, penetrations, gaps, drains, etc.

AVM Industries, Inc.
8245 Remmet Ave, Canoga Park, CA 91304

Quality Waterproofing Products

888.414.1041 818.888.0050
www.avmindustries.com

FILE NAME: 0500-2522-P-Topping-Slab-On-Plywood-MD-CS

Revision Date: 3/26/2019
Protected by Copyright © AVM Industries, Inc.

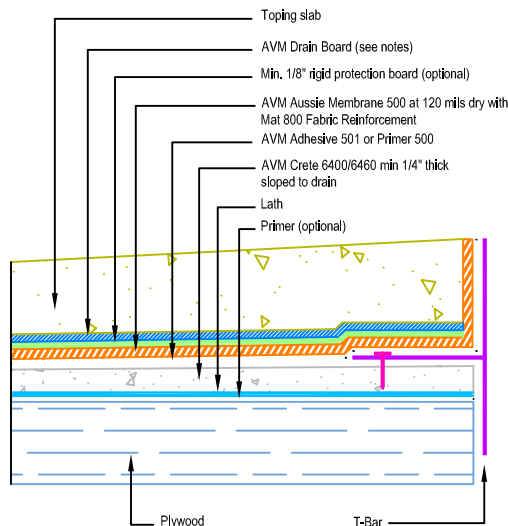
DETAIL # :
AVM-500-2572-P
AVM System 500
Aussie Membrane
VIEW TYPE:
Cut Sheet

Other Edge and Drain Details

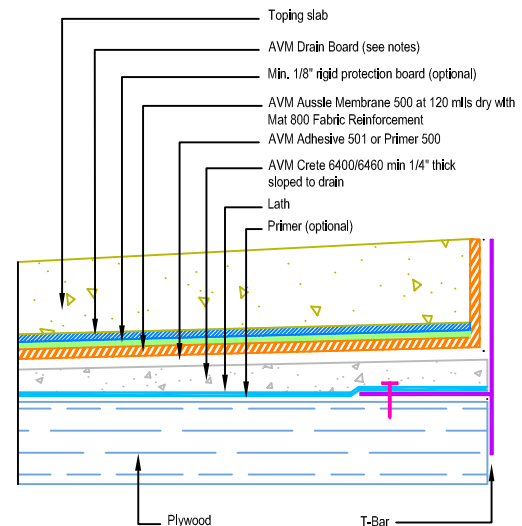
Topping Slabs Waterproofing on Plywood Substrates

AVM System 500 Aussie Membrane

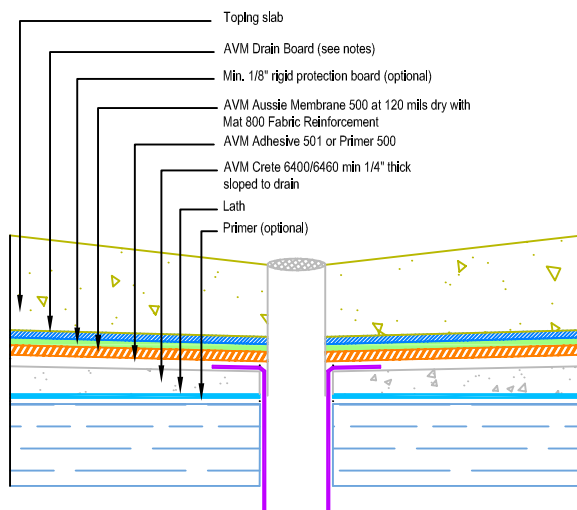
Fluid Applied Waterproofing (120 mil system with primer and reinforcement)



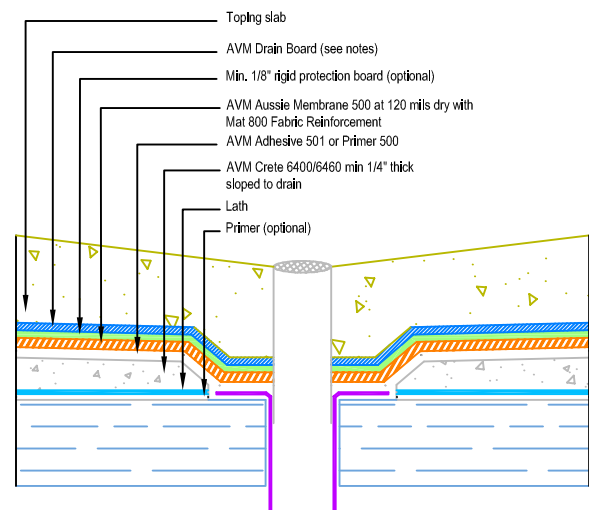
Slope Away from Edge Detail
Concrete Under Metals



Slope Away from Edge Detail
Concrete Over Metals



Drain Flange Sitting on
Crete 6400/6460



Drain Flange Sitting on
Plywood Substrate

Notes:

1. See drawing and notes on detail number AVM-500-2502-P for more information.
2. If water is to drain away from the edge into area floor drains, then edge metals do not require weep holes.
3. Reinforce the Aussie Membrane with AVM Mat 800 at all corners, metal transitions, penetrations, gaps, drains, etc.
4. Topping slabs for pedestrian traffic use AVM Drain Board 6000
5. Topping slabs above 4\"

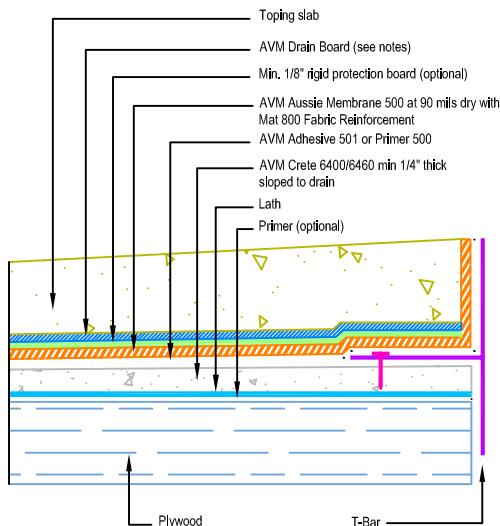
DETAIL # :
AVM-500-2574-P
AVM System 500
Aussie Membrane
VIEW TYPE:
Cut Sheet

Other Edge and Drain Details

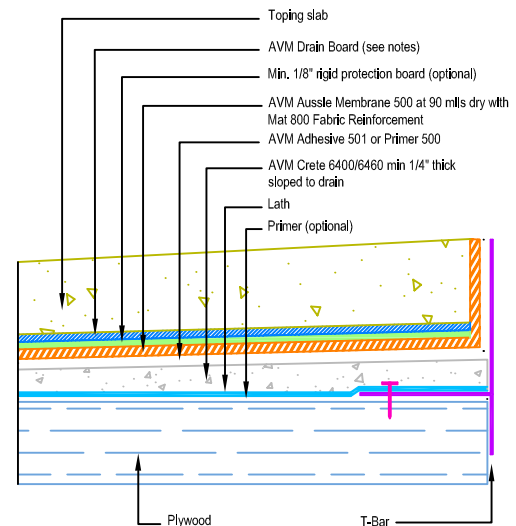
Topping Slabs Waterproofing on Plywood Substrates

AVM System 500 Aussie Membrane

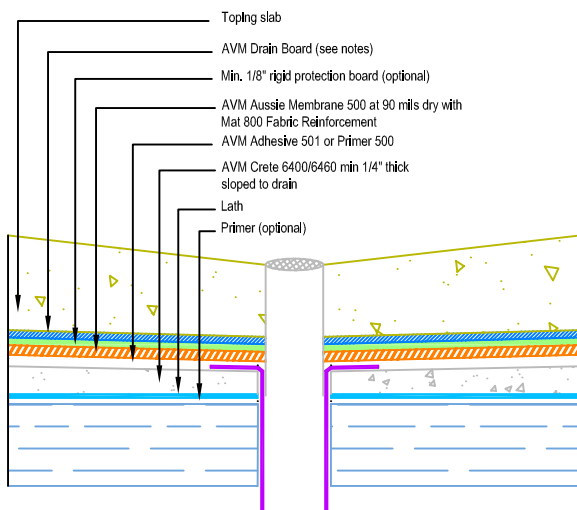
Fluid Applied Waterproofing (90 mil system with primer and reinforcement)



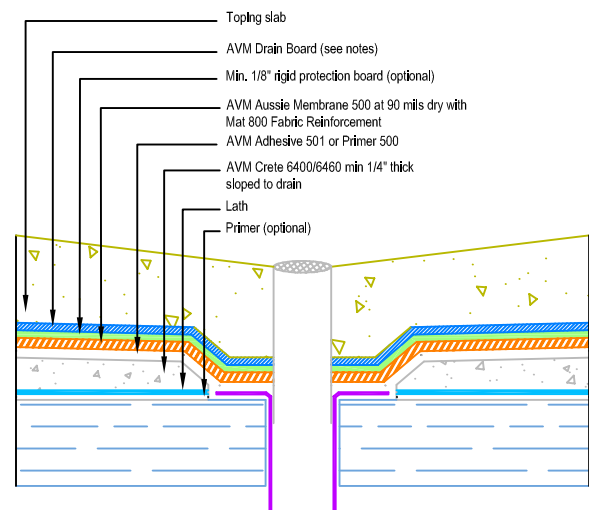
Slope Away from Edge Detail
Concrete Under Metals



Slope Away from Edge Detail
Concrete Over Metals



Drain Flange Sitting on
Crete 6400/6460



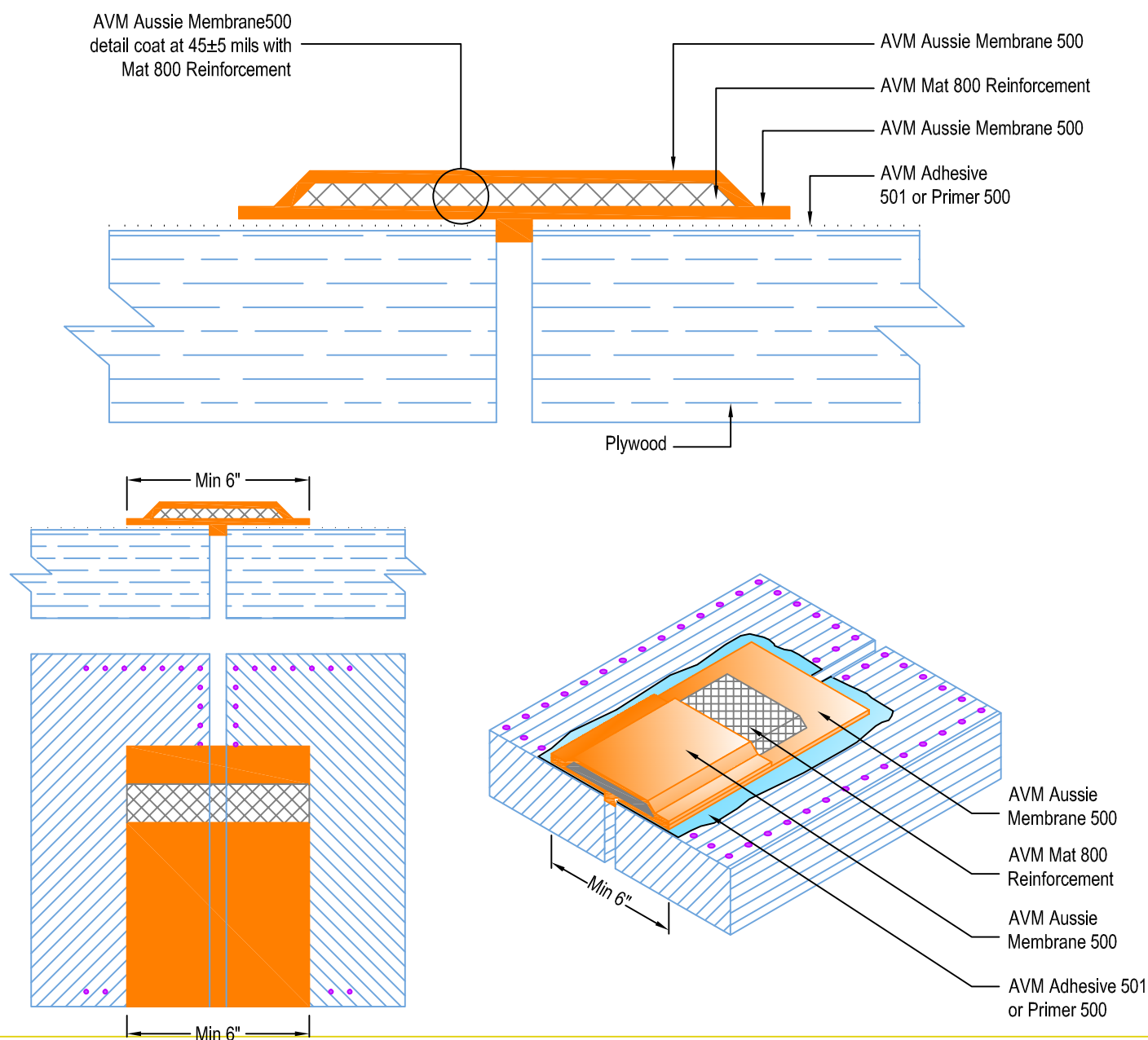
Drain Flange Sitting on
Plywood Substrate

Notes:

1. See drawing and notes on detail number AVM-500-2502-P for more information.
2. If water is to drain away from the edge into area floor drains, then edge metals do not require weep holes.
3. Reinforce the Aussie Membrane with AVM Mat 800 at all corners, metal transitions, penetrations, gaps, drains, etc.
4. Topping slabs for pedestrian traffic use AVM Drain Board 6000
5. Topping slabs above 4\"/>

DETAIL # :
AVM-500-2580-P
AVM System 500
Aussie Membrane
VIEW TYPE:
Cut Sheet

Plywood Joint Detail for Topping Slabs Waterproofing on Plywood Substrates **AVM System 500 Aussie Membrane** Fluid Applied Waterproofing



Notes:

1. This detail may not be applicable or needed if installing metal lath and AVM Crete 6400 over the plywood substrates before installing the Aussie Membrane. (See Detail # AVM-500-2502-P)
2. Aussie Membrane 500 is a Water-Based Bitumen (Roller or Brush Applied) for Below-Grade, Between-Slab, Planters, Roof-Gardens and similar type waterproofing.
3. For proper membrane thickness and drainage / protection requirements, refer to other "Topping Slab on Plywood" Details.
4. Make sure all nails are flush with the plywood surface or slightly sunken in below it. (Nails protruding above the plywood surface may puncture the membrane)
5. Remove/grind/repair as necessary any other protrusions, sharp edges, etc that may puncture or damage the membrane.
6. Reinforce the Aussie Membrane with AVM Mat 800 as shown at all plywood joints, flashings, penetrations, etc.
7. If extra protection is needed, use double reinforcement. (two layers of Mat 800 reinforcing fabric)

AVM Industries, Inc.
8245 Remmet Ave, Canoga Park, CA 91304

Quality Waterproofing Products

888.414.1041 818.888.0050
www.avmindustries.com

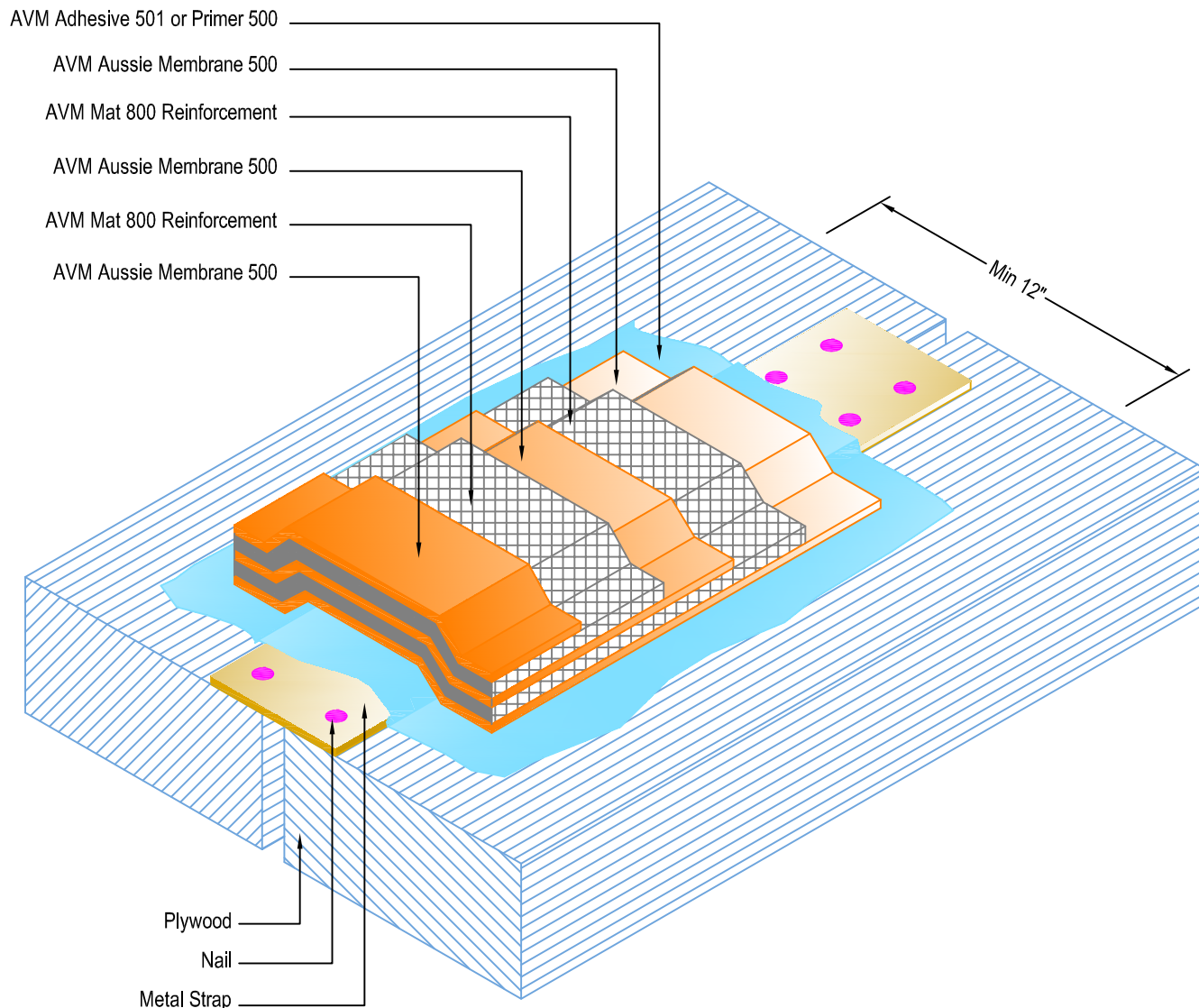
FILE NAME: 0500-2580-P-Plywood-Joints-Topping-Slab-On-Plywood-CS

Revision 3/26/2019
Protected by Copyright © AVM Industries, Inc.

DETAIL # :
AVM-500-2582-P
AVM System 500
Aussie Membrane
VIEW TYPE:
Cut Sheet

Metal Straps at Plywood Joints Detail for Topping Slabs Waterproofing on Plywood Substrates

AVM System 500 Aussie Membrane Fluid Applied Waterproofing



Notes:

1. This detail may not be applicable or needed if installing metal lath and AVM Crete 6400 over the plywood substrates before installing the Aussie Membrane. (See Detail # AVM-500-2502-P)
2. Aussie Membrane 500 is a Water-Based Bitumen (Roller or Brush Applied) for Below-Grade, Between-Slab, Planters, Roof-Gardens and similar type Waterproofing.
3. For proper membrane thickness and drainage / protection requirements, refer to other "Topping Slab on Plywood" Details.
4. Metal straps must be protected by 'Double Fabric'.
5. Make sure all nails are flush with the plywood surface or slightly sunken in below it. (Nails protruding above the plywood surface may puncture the membrane)
6. Remove/grind/repair as necessary any other protrusions, sharp edges, etc that may puncture or damage the membrane.
7. After priming the metal straps and surrounding plywood surfaces, apply a liberal coat of the Aussie Membrane before installing the first layer of fabric to ensure the strap edges and nail heads will not cut into or damage the fabric.

AVM Industries, Inc.
8245 Remmet Ave, Canoga Park, CA 91304

Quality Waterproofing Products

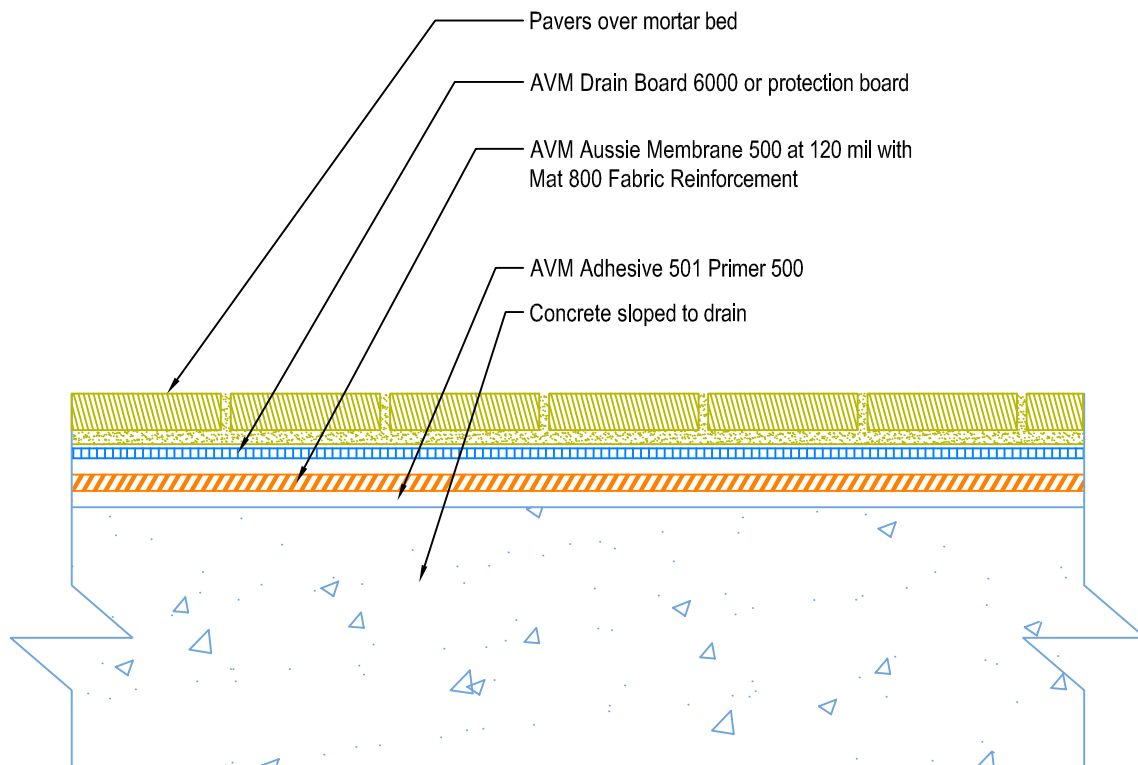
888.414.1041 818.888.0050
www.avmindustries.com

FILE NAME: 0500-2582-P-Plywood-Joints-Metal-Straps-Topping-Slab-On-Plywood-CS

Revision 3/26/2019
Protected by Copyright © AVM Industries, Inc.

DETAIL #:
AVM-500-3002-C
AVM System 500
Aussie Membrane
VIEW TYPE:
Cut Sheet

Pavers on Concrete Substrate over AVM System 500 Aussie Membrane Fluid Applied Waterproofing

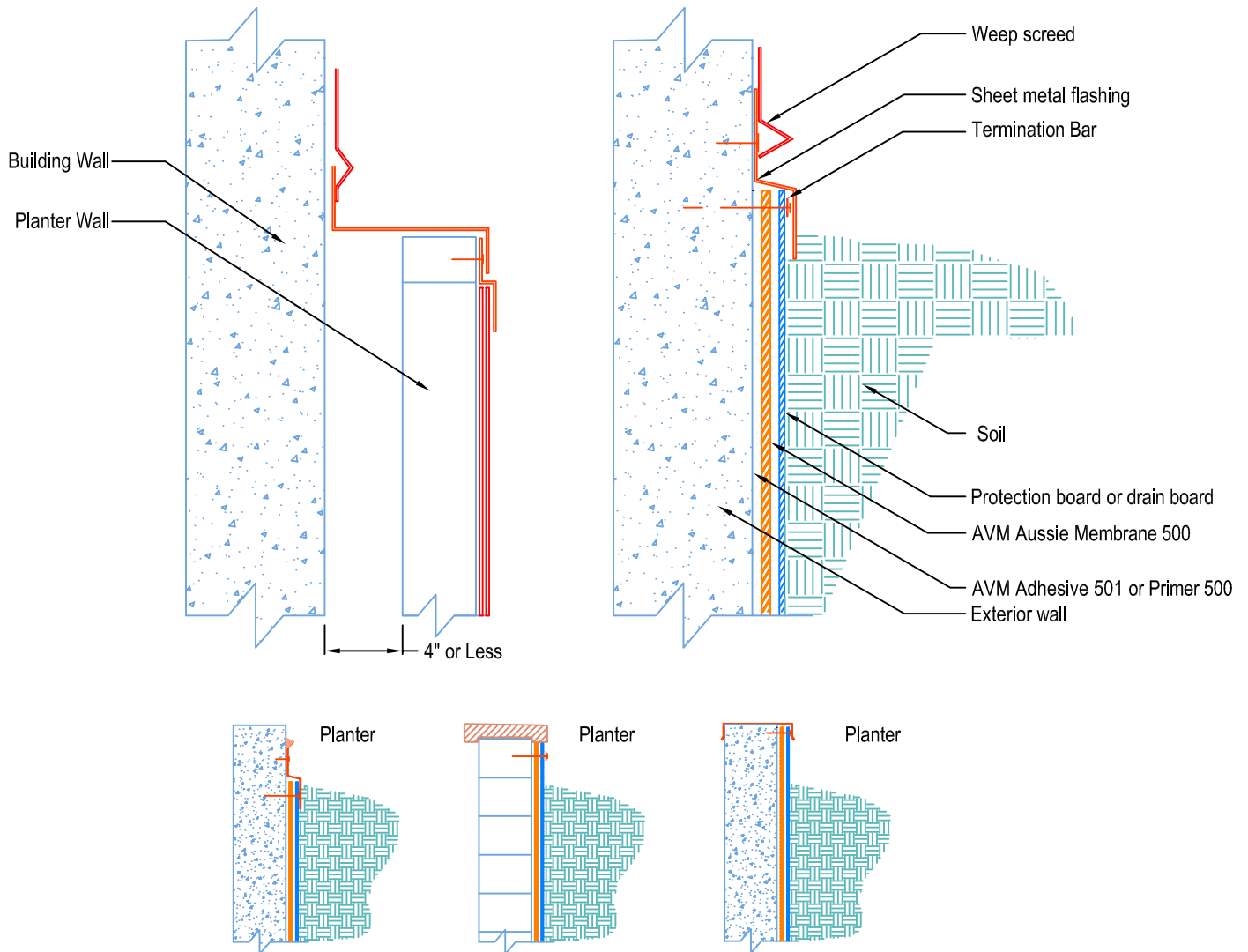


Notes:

1. Aussie Membrane 500 is a water-based bitumen (roller or brushed applied) for below-grade, between-slab, planters, roof-gardens and similar type waterproofing
3. Contact AVM if no drain board or protection board is specified

DETAIL # :
AVM-500-6002-C
AVM System 500
Aussie Membrane
VIEW TYPE:
Cut Sheet

Terminations AVM System 500 Aussie Membrane Fluid Applied Waterproofing

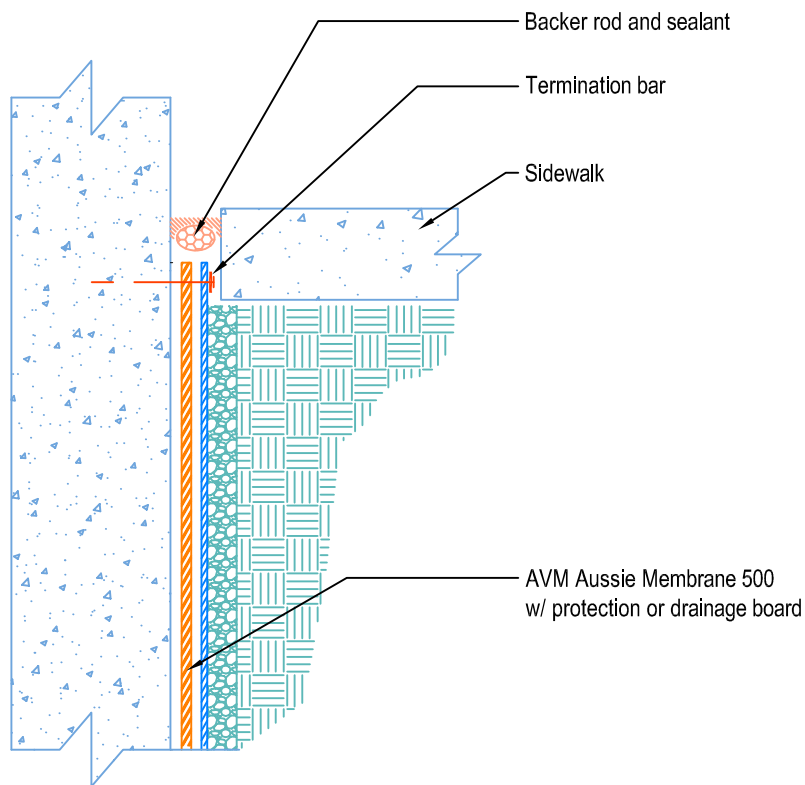


Notes:

1. Aussie Membrane 500 is a Water-Based Bitumen (Roller or Brush Applied) for Below-Grade, Between-Slab, Planters, Roof-Gardens and similar type Waterproofing.
2. Contact AVM if no drain board or protection board is specified.
3. Prime with AVM Adhesive 501 (solvent-based primer) or Primer 500 (water-based primer)
4. When sealant is specified, use AVM Aussie Seal M (Unless specified otherwise)

DETAIL # :
AVM-500-6004-C
AVM System 500
Aussie Membrane
VIEW TYPE:
Cut Sheet

Terminations at Sidewalks on Grade AVM System 500 Aussie Membrane Fluid Applied Waterproofing

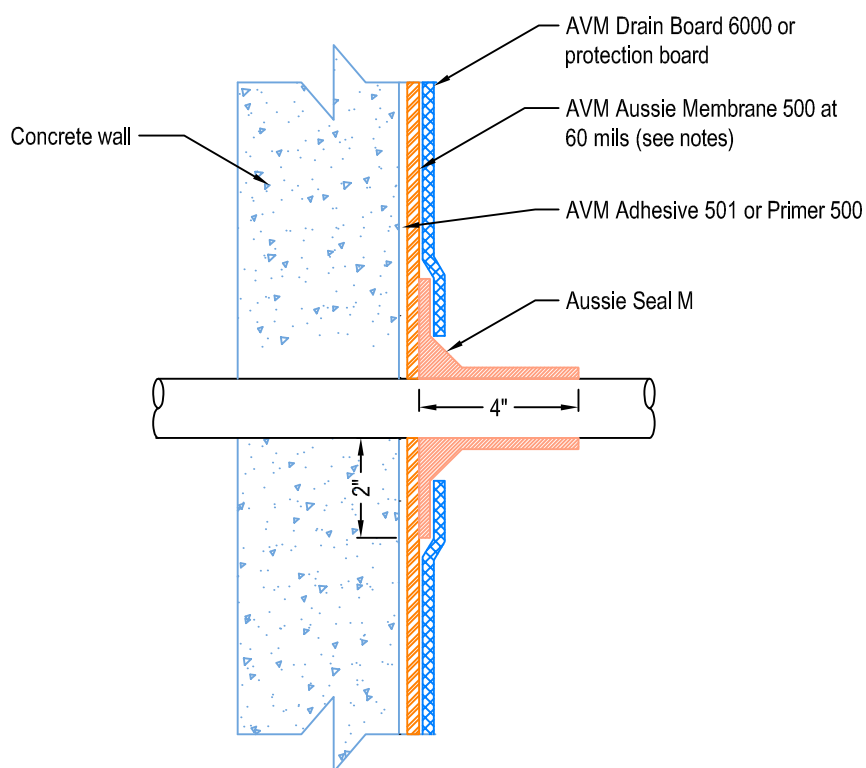


Notes:

1. Aussie Membrane 500 is a water-based bitumen (roller or brushed applied) for below-grade, between-slab, planters, roof-gardens and similar type waterproofing
2. Contact AVM if no drain board or protection board is specified.

DETAIL #:
AVM-500-6502-C
AVM System 500
Aussie Membrane
VIEW TYPE:
Cut Sheet

Pipe Penetration Thru Wall **AVM System 500 Aussie Membrane** Fluid Applied Waterproofing

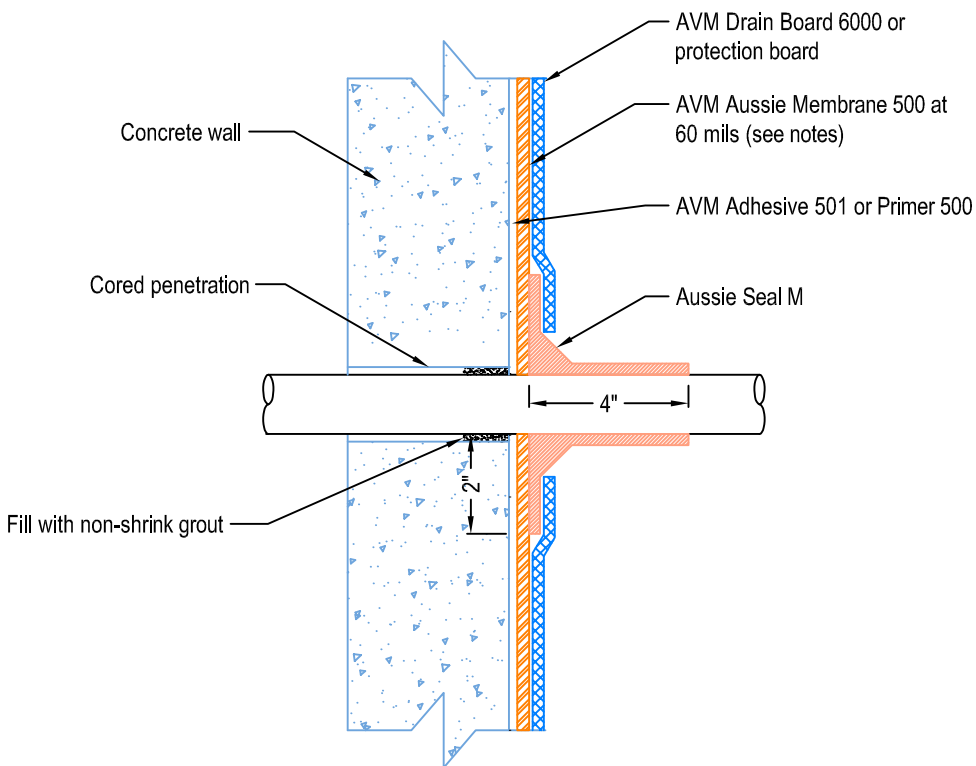


Notes:

1. Aussie Membrane 500 is a water-based bitumen (roller or brushed applied) for below-grade, between-slab, planters, roof-gardens and similar type waterproofing.
2. In Non-Hydrostatic conditions: Min 60 Mils Dry Film Thickness (DFT). In Hydrostatic conditions: Min 90 Mils Dry Film Thickness (DFT)
3. Contact AVM if no drain board or protection board is specified.
4. With sealant around pipe.

DETAIL # :
AVM-500-6502-C
AVM System 500
Aussie Membrane
VIEW TYPE:
Cut Sheet

Cored Pipe Penetration Thru Wall AVM System 500 Aussie Membrane Fluid Applied Waterproofing

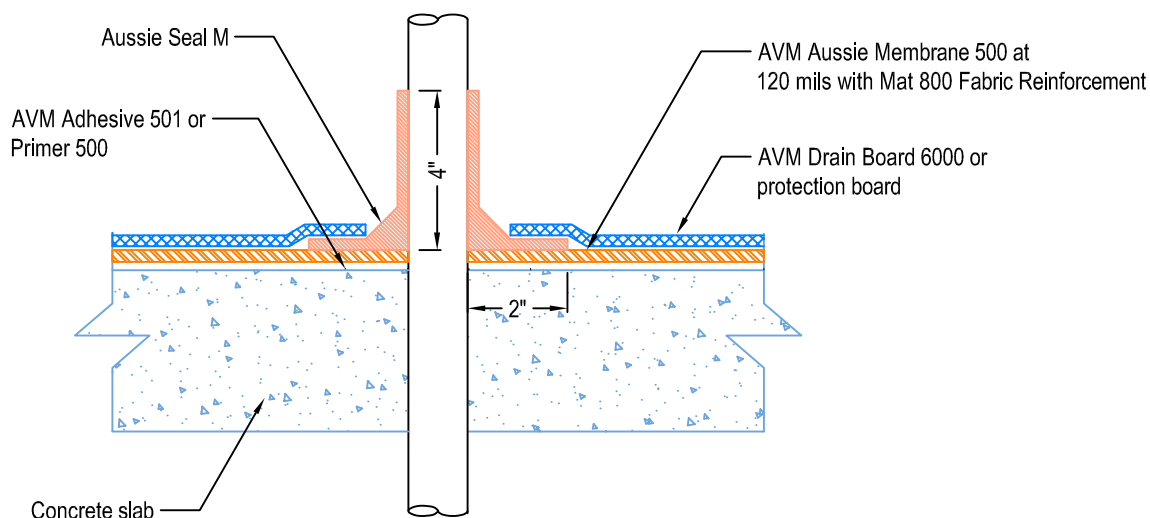


Notes:

1. Aussie Membrane 500 is a water-based bitumen (roller or brushed applied) for below-grade, between-slab, planters, roof-gardens and similar type waterproofing.
2. In Non-Hydrostatic conditions: Min 60 Mils Dry Film Thickness (DFT). In Hydrostatic conditions: Min 90 Mils Dry Film Thickness (DFT)
3. Contact AVM if no drain board or protection board is specified.
4. With sealant around pipe.

DETAIL #:
AVM-500-6702-C
AVM System 500
Aussie Membrane
VIEW TYPE:
Cut Sheet

Pipe Penetration Thru Slab **AVM System 500 Aussie Membrane** Fluid Applied Waterproofing



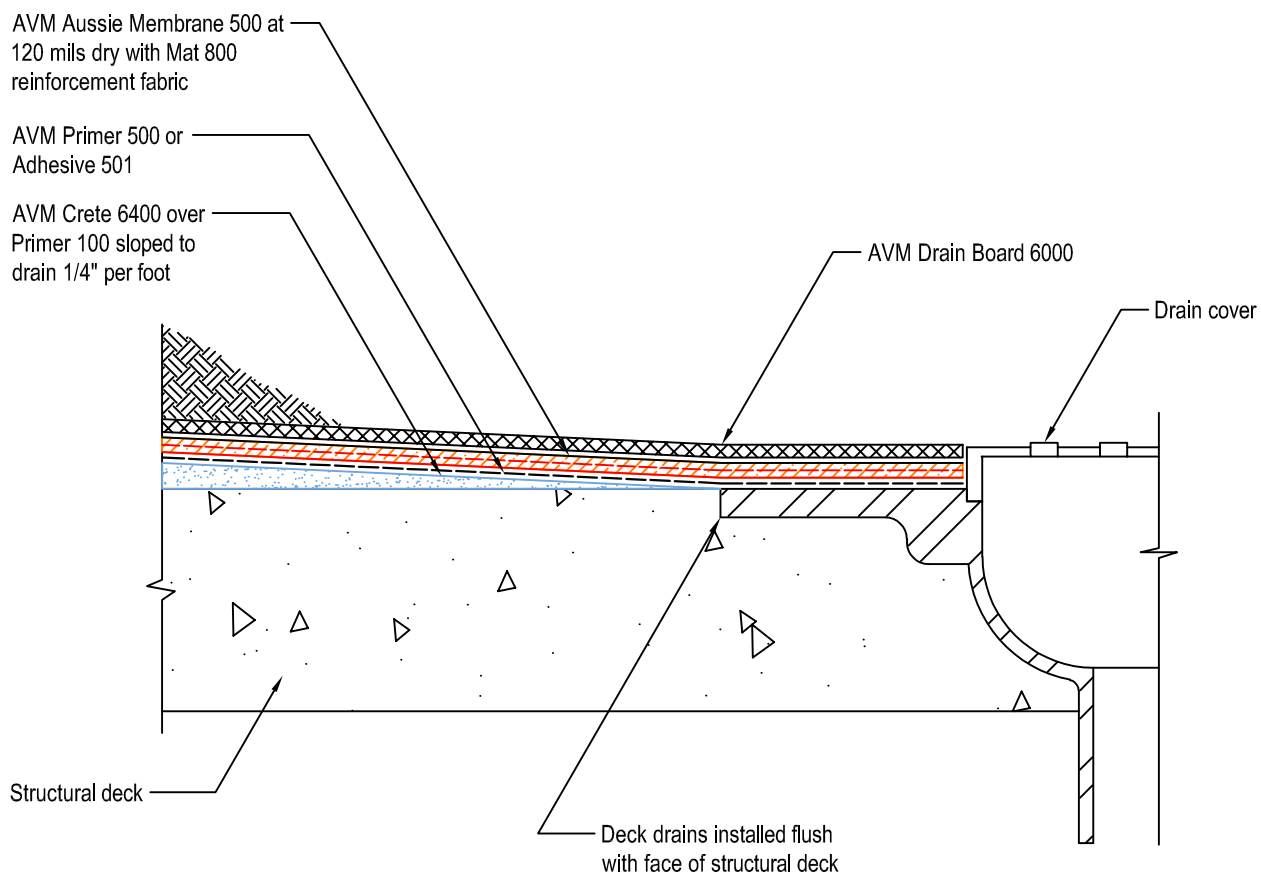
Notes:

1. Aussie Membrane 500 is a water-based bitumen (roller or brushed applied) for below-grade, between-slab, planters, roof-gardens and similar type waterproofing.
3. Contact AVM if no drain board or protection board is specified.
4. With sealant around pipe.

DETAIL # :
AVM-500-7002-C
AVM System 500
Aussie Membrane

AVM System 500

Horizontal Slab Waterproofing at Deck Drain



Notes:

1. Aussie Membrane 500 is a water-based bitumen (roller or brushed applied) for below-grade, between-slab, planters, roof-gardens and similar type waterproofing
3. Contact AVM if no drain board or protection board is specified

DETAIL #:	AVM-500-8002-C
AVM System 500	Aussie Membrane
VIEW TYPE:	Cut Sheet

Crack Repair

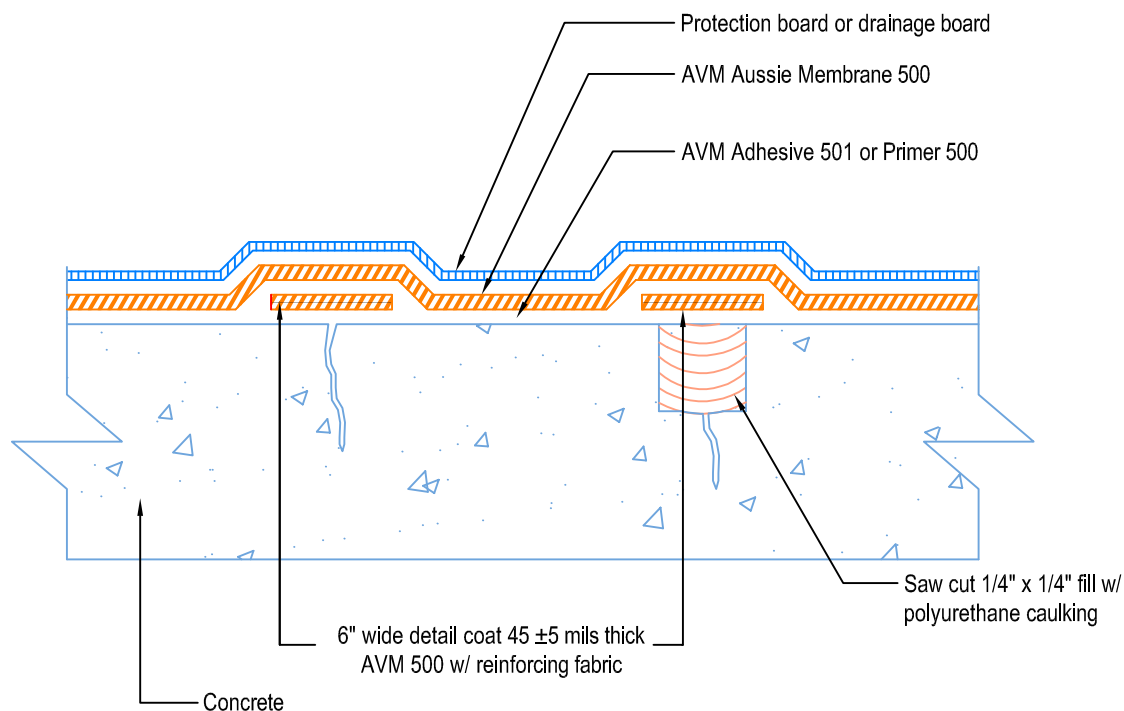
AVM System 500 Aussie Membrane

Fluid Applied Waterproofing



Crack less than 1/16" wide

Crack greater than 1/16" wide



Notes:

1. Aussie Membrane 500 is a water-based bitumen (roller or brushed applied) for below-grade, between-slab, planters, roof-gardens and similar type waterproofing.
2. Contact AVM if no drain board or protection board is specified.