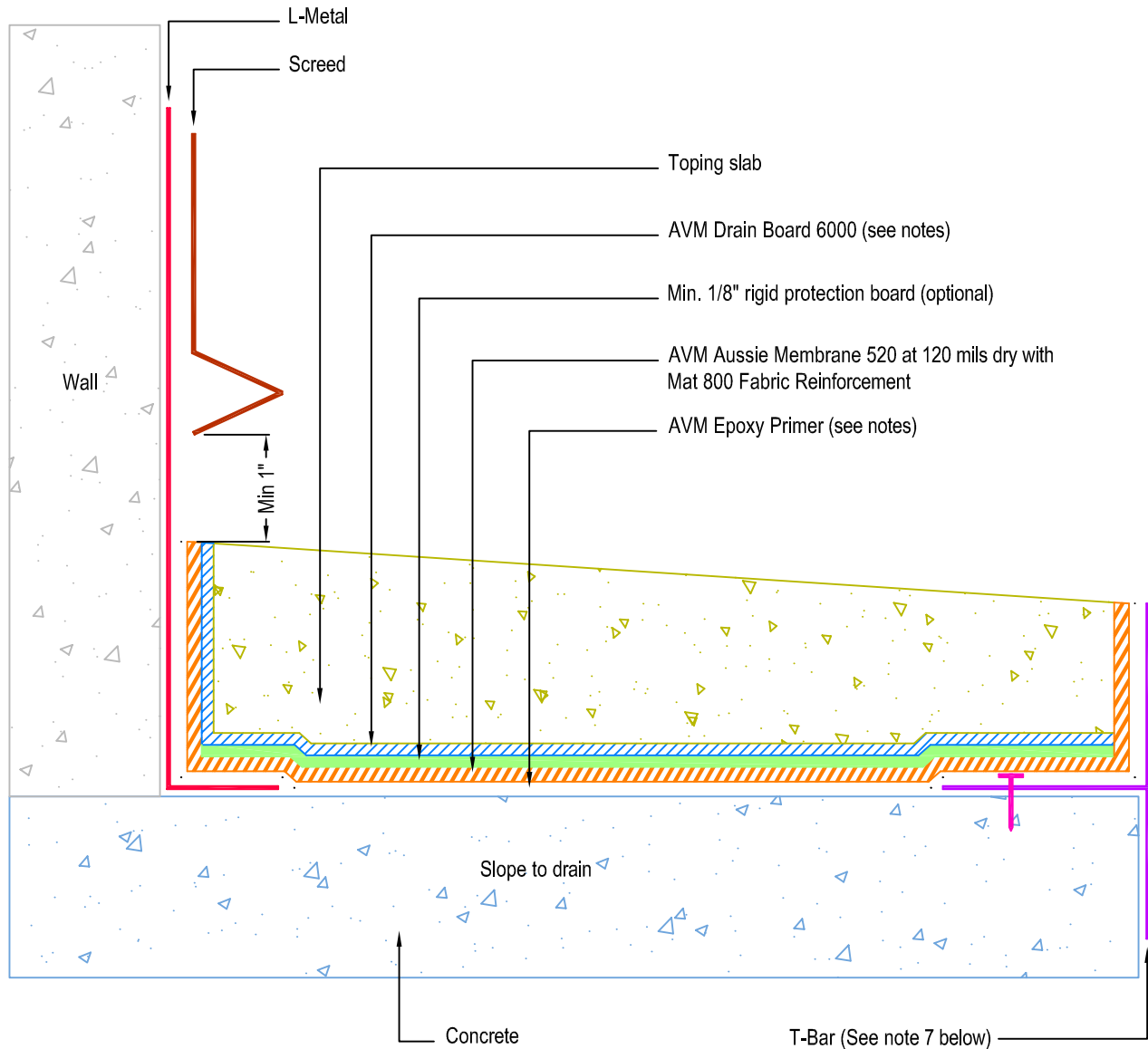


DETAIL # :
 AVM-520-2012-C
 AVM System 520
 Aussie Membrane
 VIEW TYPE:
 Cut Sheet

Topping Slab on Concrete Substrate over
AVM System 520 Aussie Membrane
 with Drain Board, Fluid Applied Waterproofing
 (120 mil system with primer and reinforcement)



Notes:

1. Aussie Membrane 520 is a Polyurethane liquid (Roller or Brush Applied) for Below-Grade, Between-Slab, Planters, Roof-Gardens and similar type Waterproofing.
2. Epoxy primer may be required if proper adhesion is not achieved.
3. For drainage/protection - use AVM Drain Board 6000. For topping slabs over 4" thick or vehicular applications, use AVM Drain Board 9000
4. This assembly is for pedestrian traffic use only. For vehicular applications and other heavy loads, contact AVM for approval.
5. Substrates must be sloped to drains and/or edges before membrane installation. (Min 1/4" per foot)
6. If water is to drain over the edge, then edge metals (if used) MUST have sufficient weep holes (at least every 6") and must be strong enough (thick enough) to act as a concrete form.
7. When drainage is over the edges, edge assemblies must allow for proper water evacuation. (None should trap water) Consult AVM for details.
8. Reinforce the Aussie Membrane with AVM Mat 800 at all corners, metal transitions, penetrations, gaps, drains, etc.