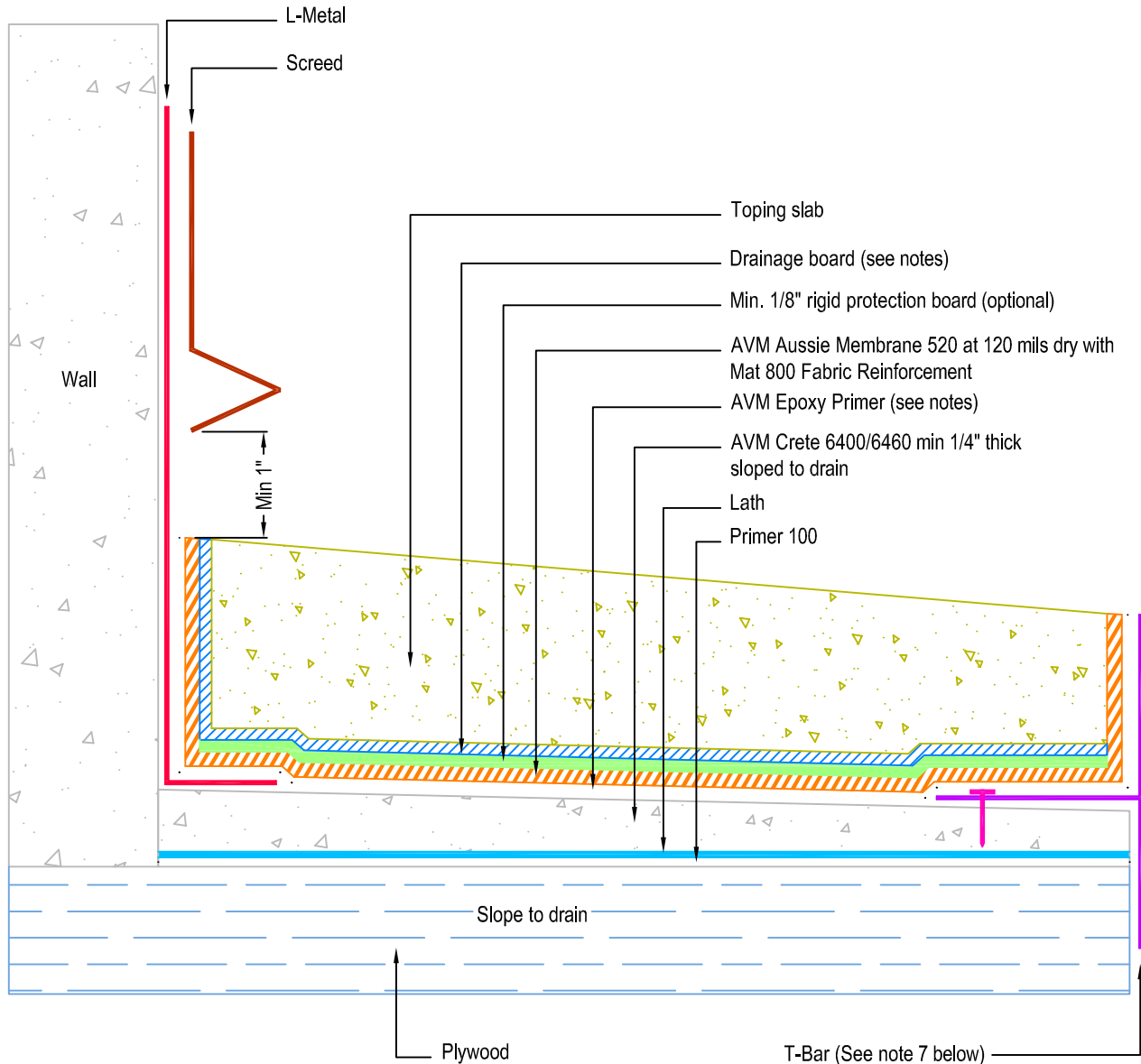


DETAIL # :	AVM-520-2502-P
AVM System 520	Aussie Membrane
VIEW TYPE:	Cut Sheet

# Topping Slab on Plywood Substrate over AVM System 520 Aussie Membrane with Drain Board & Thin Crete Base, Fluid Applied Waterproofing Concrete Under Metals (120 mil system with primer and reinforcement)



**Notes:**

1. Aussie Membrane 520 is a Polyurethane liquid (Roller or Brush Applied) for Below-Grade, Between-Slab, Planters, Roof-Gardens and similar type Waterproofing.
2. Epoxy primer may be required if proper adhesion is not achieved.
3. Crete 6400/6460. Refer to the Crete 6400 or Crete 6460 Spec Sheets or Installation Instructions for more information
4. For drainage/protection - use AVM Drain Board 6000. For topping slabs over 4" thick or vehicular applications, use AVM Drain Board 9000.
5. This assembly is for pedestrian traffic use only. For vehicular applications and other heavy loads, contact AVM for approval.
6. For extra protection, use 1/8" or 1/4" thick rigid protection board below the drain board.
7. Substrates must be sloped to drains and/or edges before membrane installation. (Min 1/4" per foot)
8. If water is to drain over the edge, then edge metals MUST have sufficient weep holes (at least every 6") and must be strong enough (thick enough) to act as a concrete form.
9. When drainage is over the edges, edge assemblies must allow for proper water evacuation. (None should trap water) Consult AVM for details.
10. Reinforce the Aussie Membrane with AVM Mat 800 at all corners, metal transitions, penetrations, gaps, drains, etc.