

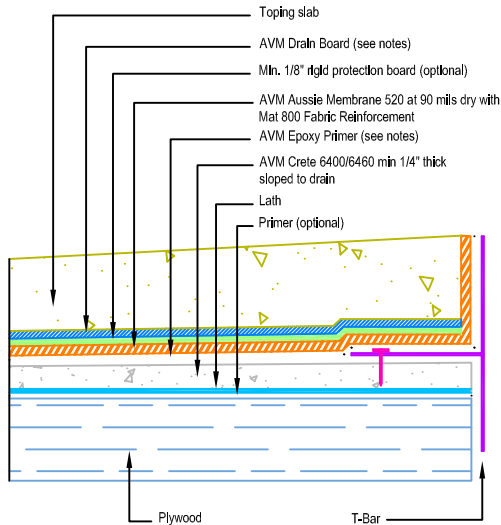
DETAIL # :  
 AVM-520-2574-P  
 AVM System 520  
 Aussie Membrane  
 VIEW TYPE:  
 Cut Sheet

# Other Edge and Drain Details

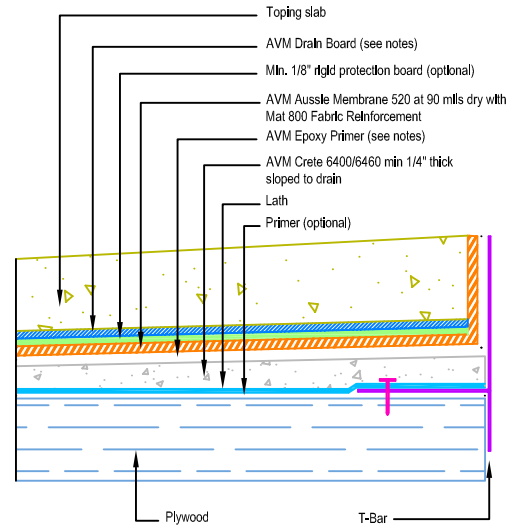
## Topping Slabs Waterproofing on Plywood Substrates

### AVM System 520 Aussie Membrane

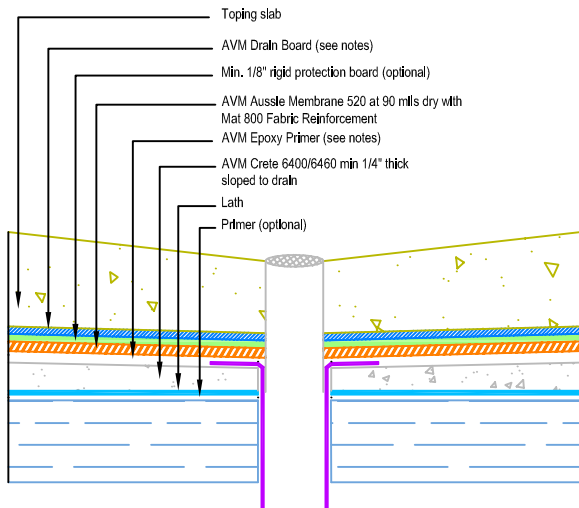
#### Fluid Applied Waterproofing (90 mil system with primer and reinforcement)



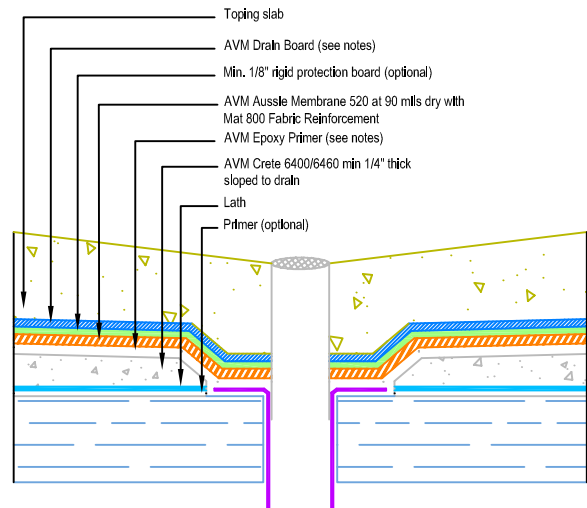
Slope Away from Edge Detail  
Concrete Under Metals



Slope Away from Edge Detail  
Concrete Over Metals



Drain Flange Sitting on  
Crete 6400/6460



Drain Flange Sitting on  
Plywood Substrate

**Notes:**

1. Aussie Membrane 520 is a Polyurethane liquid (Roller or Brush Applied) for Below-Grade, Between-Slab, Planters, Roof-Gardens and similar type Waterproofing.
2. Epoxy primer may be required if proper adhesion is not achieved.
3. See drawing and notes on detail number AVM-520-2502-P for more information.
4. If water is to drain away from the edge into area floor drains, then edge metals do not require weep holes.
5. Reinforce the Aussie Membrane with AVM Mat 800 at all corners, metal transitions, penetrations, gaps, drains, etc.
6. Topping slabs for pedestrian traffic use AVM Drain Board 6000
7. Topping slabs above 4" thick or for vehicular traffic use AVM Drain Board 9000