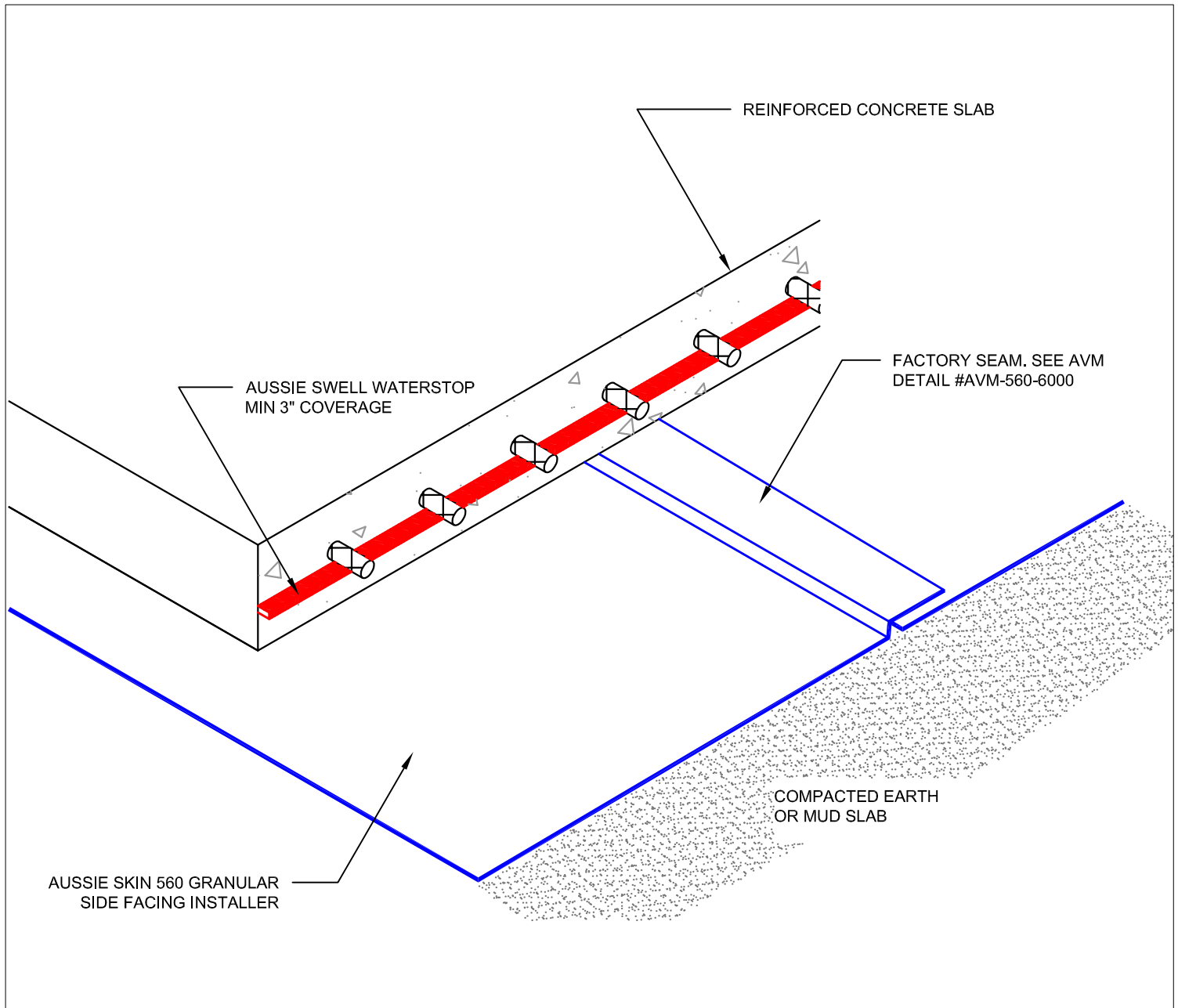


DETAIL #:
AVM-560-1500
Aussie Skin 560

Under Slab Assembly
Aussie Skin 560
Waterproofing and Methane Barrier



Notes:

1. Aussie Skin 560 is a Methane and Shotcrete Approved Heavy Duty, Easy to Install, Puncture Resistant Sheet Waterproofing Membrane with added technologies creating excellent adhesion between the membrane and wet Concrete or Shot-Crete.
2. All surfaces must be clean and sound before installing the lap joints. (Remove excess sand before applying double sided tape)

DETAIL #:

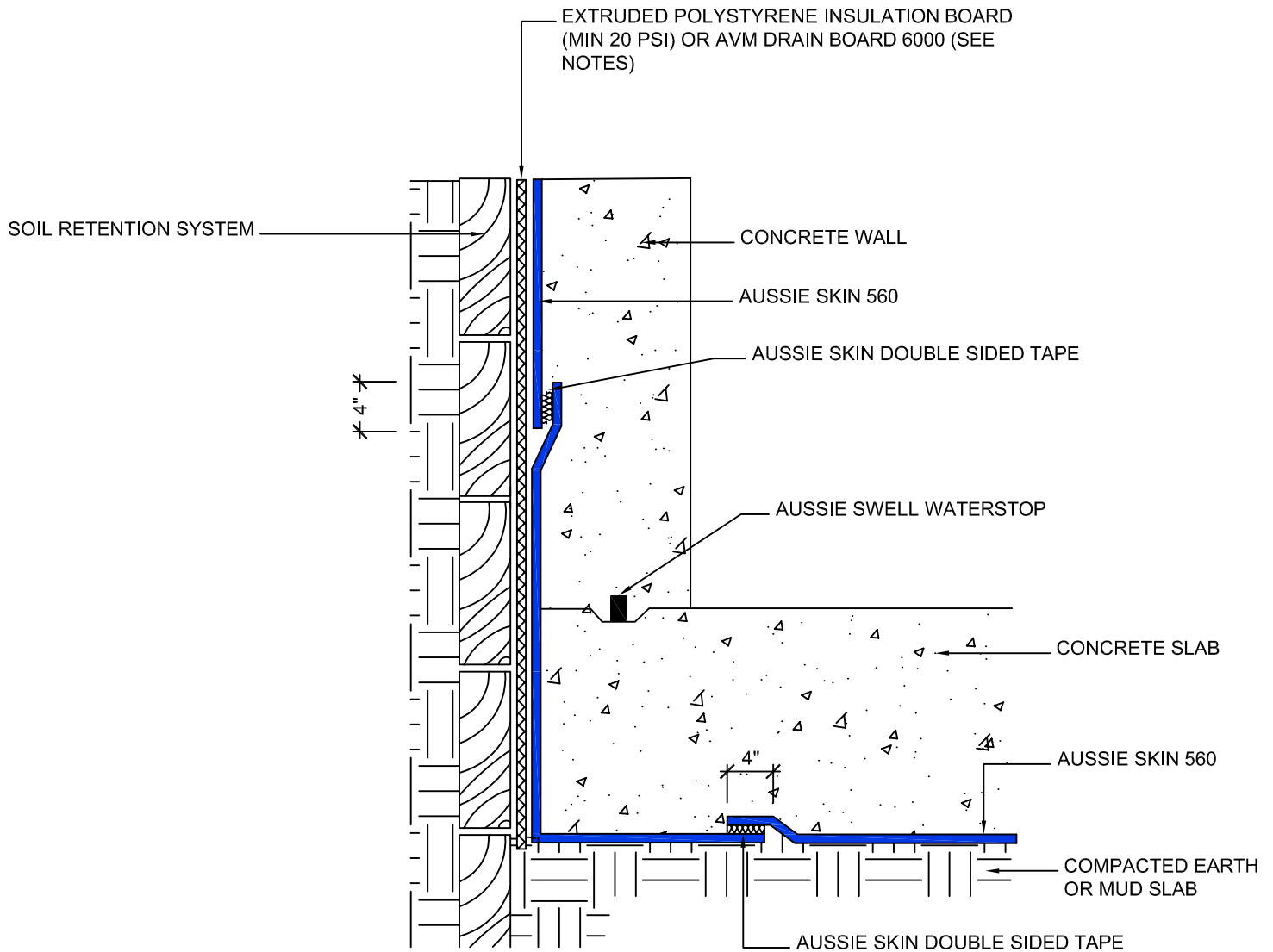
AVM-560-1510

Aussie Skin 560

Exterior Wall to Mat Slab Transition

Aussie Skin 560

Waterproofing and Methane Barrier



NOTES:

1. Aussie Skin 560 is a Methane and Shotcrete Approved Heavy Duty, Easy to Install, Puncture Resistant Sheet Waterproofing Membrane with added technologies creating excellent adhesion between the membrane and wet Concrete or Shot-Crete.
2. Contact AVM if no drain board or protection board is specified.
3. All nails, screws etc used to hang the Aussie Skin above the water table must be non-rusting and sealed with AVM approved Sealant.
4. Not approved for shot-crete below the water table.
5. Drain board must be connected to a permanent dewatering system if used in hydrostatic conditions.

AVM Industries, Inc.
8245 Remmet Ave, Canoga Park, CA 91304

Quality Waterproofing Products

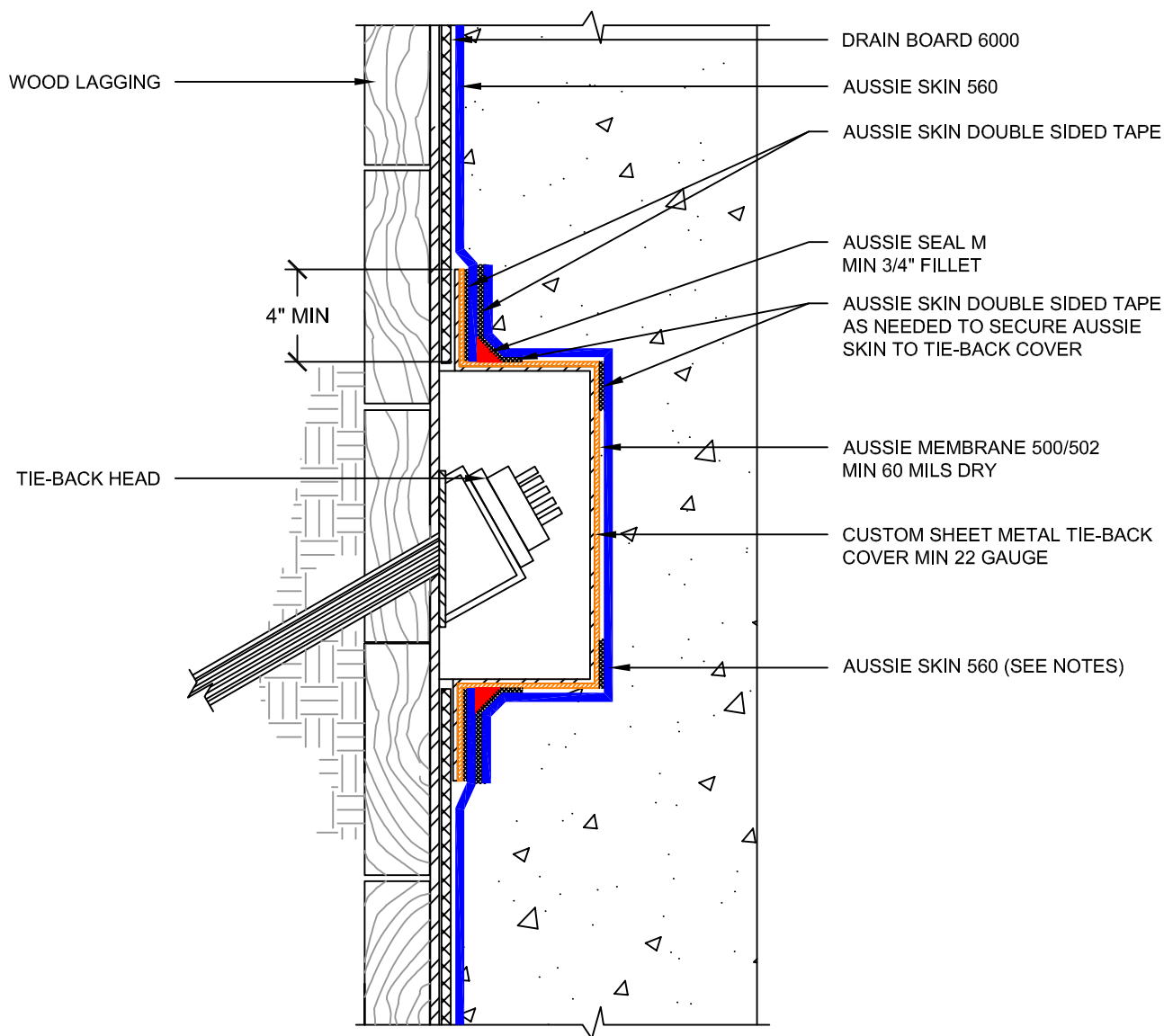
888.414.1041 818.888.0050
www.avmindustries.com

FILE NAME: 0560-1510

Protected by Copyright - AVM Industries, Inc. Revision Date 1/21/2019

DETAIL #:
AVM-560-1530
Aussie Skin 560

Metal Tie-Back Cover
Aussie Skin 560
Waterproofing and Methane Barrier



Notes:

1. Aussie Skin 560 is a Methane and Shotcrete Approved Heavy Duty, Easy to Install, Puncture Resistant Sheet Waterproofing Membrane with added technologies creating excellent adhesion between the membrane and wet Concrete or Shot-Crete.
2. Contact AVM if no drain board or protection board is specified.
3. Relief cuts may be needed to form Aussie Skin around tie-back cover. All relief cuts should be covered with Sanded Tape.
4. All nails, screws etc used to hang the Aussie Skin above the water table must be non-rusting and sealed with AVM approved Sealant.
5. Not approved for shotcrete below water table.

AVM Industries, Inc.
8245 Remmet Ave, Canoga Park, CA 91304

Quality Waterproofing Products

888.414.1041 818.888.0050
www.avmindustries.com

FILE NAME: 0560-1530

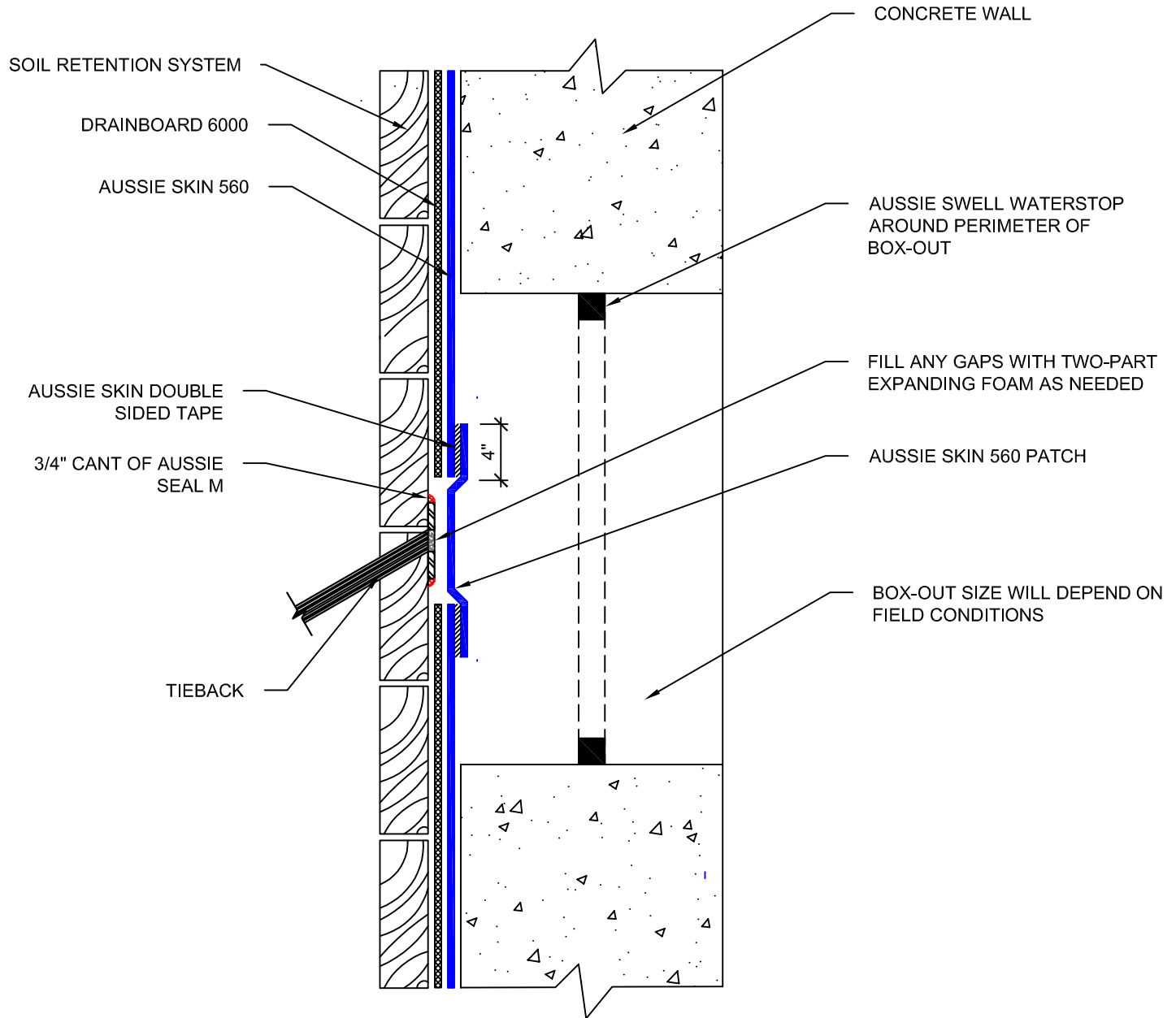
Protected by Copyright - AVM Industries, Inc. Revision Date 1/21/2019

DETAIL #:

AVM-560-1531

Aussie Skin 560

Detensioned Tie-Back Box-out
Aussie Skin 560
Waterproofing and Methane Barrier



NOTES:

1. Aussie Skin 560 is a Methane and Shotcrete Approved Heavy Duty, Easy to Install, Puncture Resistant Sheet Waterproofing Membrane with added technologies creating excellent adhesion between the membrane and wet Concrete or Shot-Crete.
2. Contact AVM if no drain board or protection board is specified.
3. All nails, screws etc used to hang the Aussie Skin above the water table must be non-rusting and sealed with AVM approved Sealant.

DETAIL #:

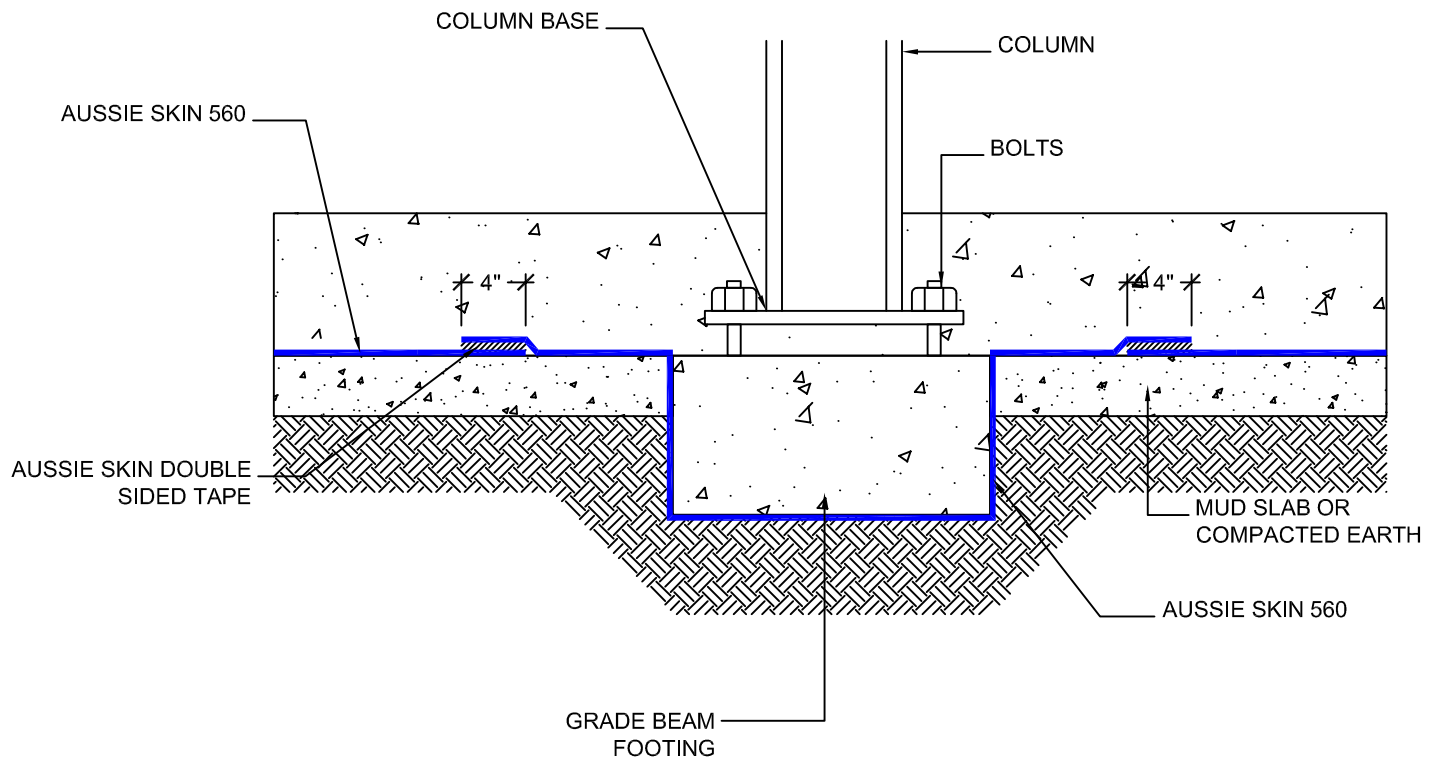
AVM-560-2500

Aussie Skin 560

Aussie Skin Under Grade-Beam - Hydrostatic

Aussie Skin 560

Waterproofing and Methane Barrier



NOTES:

1. Aussie Skin 560 is a Methane and Shotcrete Approved Heavy Duty, Easy to Install, Puncture Resistant Sheet Waterproofing Membrane with added technologies creating excellent adhesion between the membrane and wet Concrete or Shot-Crete.

AVM Industries, Inc.
8245 Remmet Ave, Canoga Park, CA 91304

Quality Waterproofing Products

888.414.1041 818.888.0050
www.avmindustries.com

FILE NAME: 0560-2500

Protected by Copyright - AVM Industries, Inc. Revision Date 2/7/2019

DETAIL #:

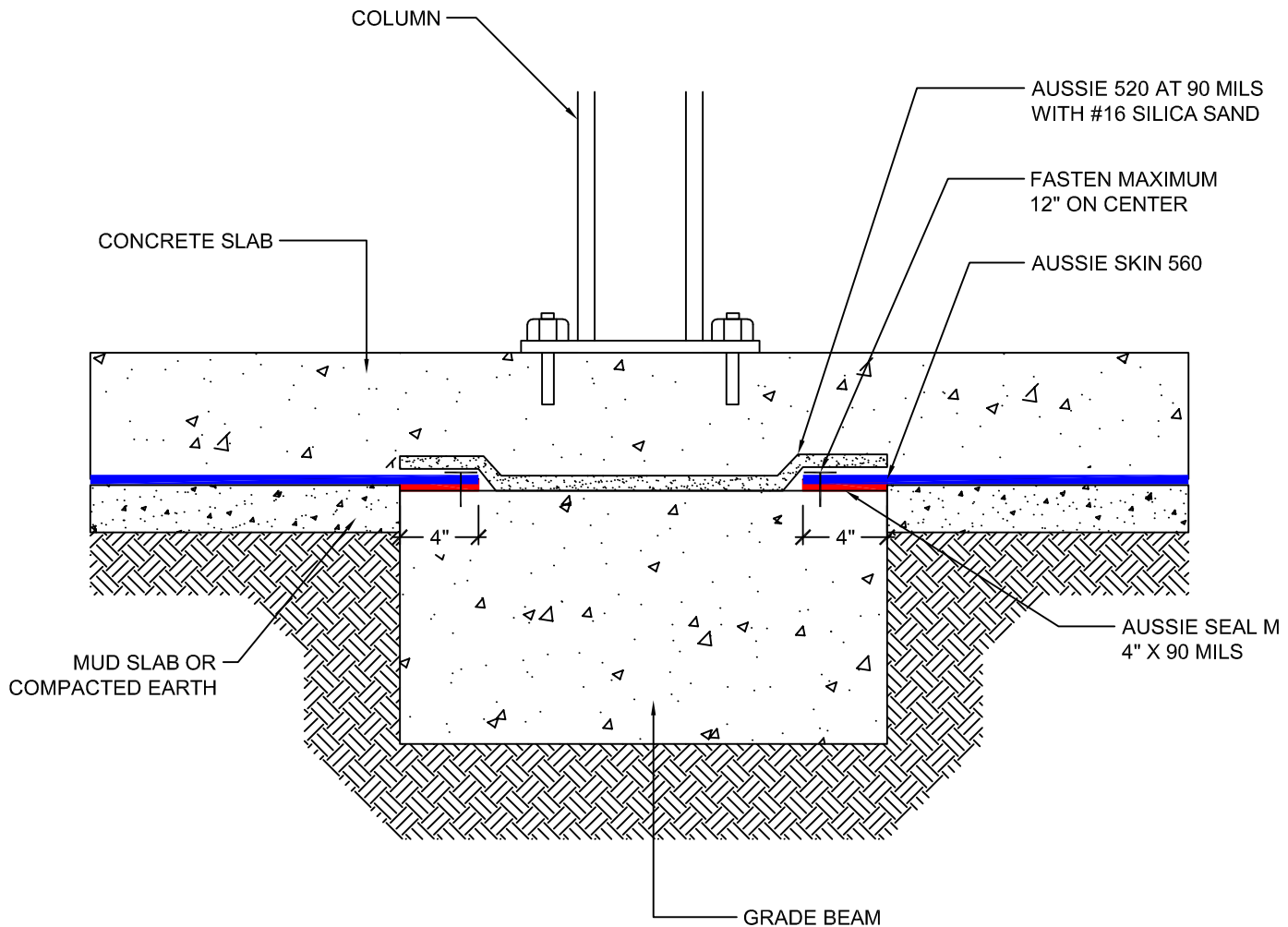
AVM-560-2540

Aussie Skin 560

Aussie Skin Over Grade-Beam - Hydrostatic

Aussie Skin 560

Waterproofing and Methane Barrier



NOTES:

1. Aussie Skin 560 is a Methane and Shotcrete Approved Heavy Duty, Easy to Install, Puncture Resistant Sheet Waterproofing Membrane with added technologies creating excellent adhesion between the membrane and wet Concrete or Shot-Crete.
2. Aussie Membrane 520 must cure 24 hours prior to concrete placement.

AVM Industries, Inc.
8245 Remmet Ave, Canoga Park, CA 91304

Quality Waterproofing Products

888.414.1041 818.888.0050
www.avmindustries.com

FILE NAME: 0560-2540

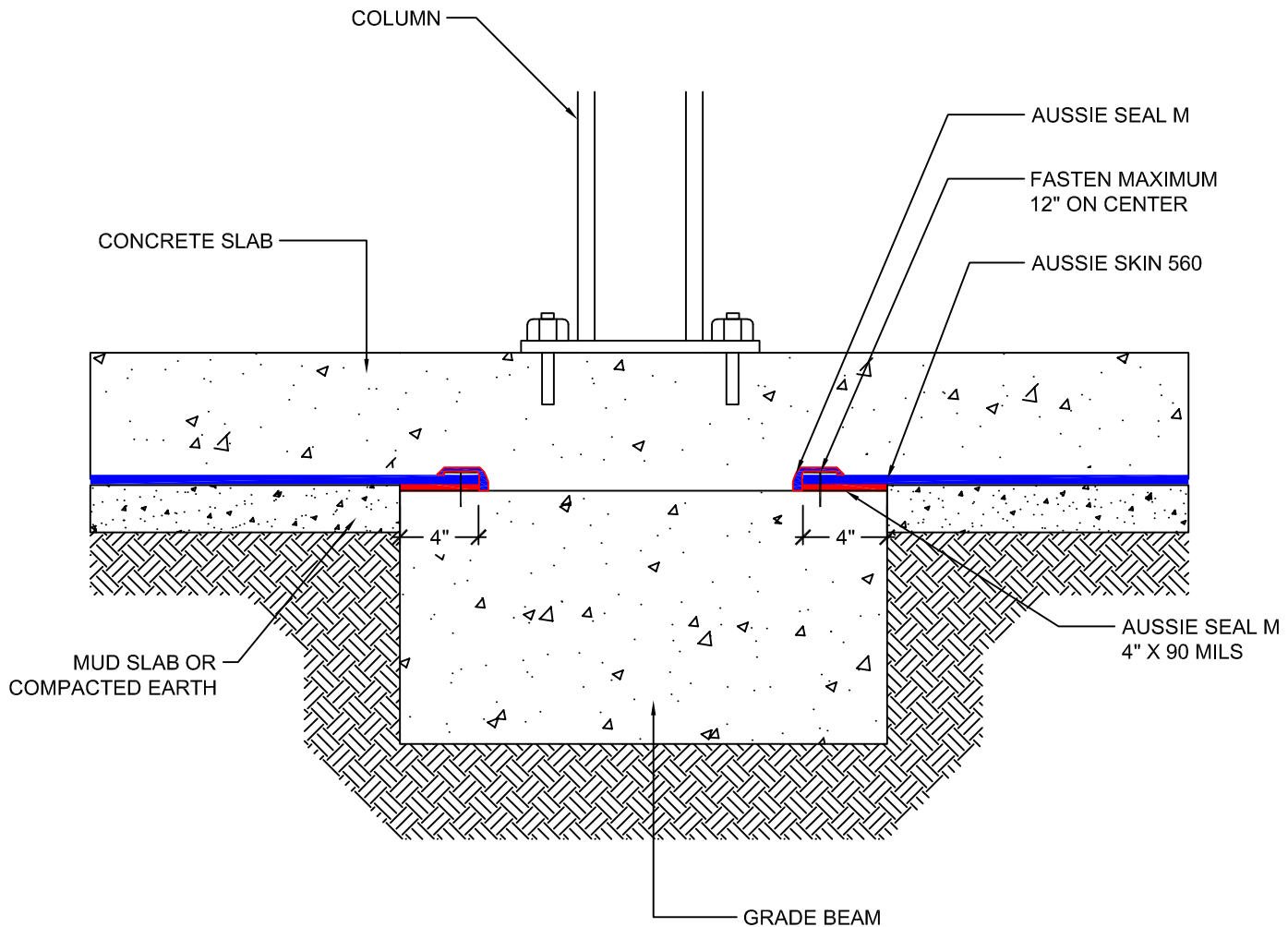
Protected by Copyright - AVM Industries, Inc. Revision Date 2/7/2019

DETAIL #:

AVM-560-2550

AVM System 560

Aussie Skin Over Grade-Beam Non-Hydrostatic



NOTES:

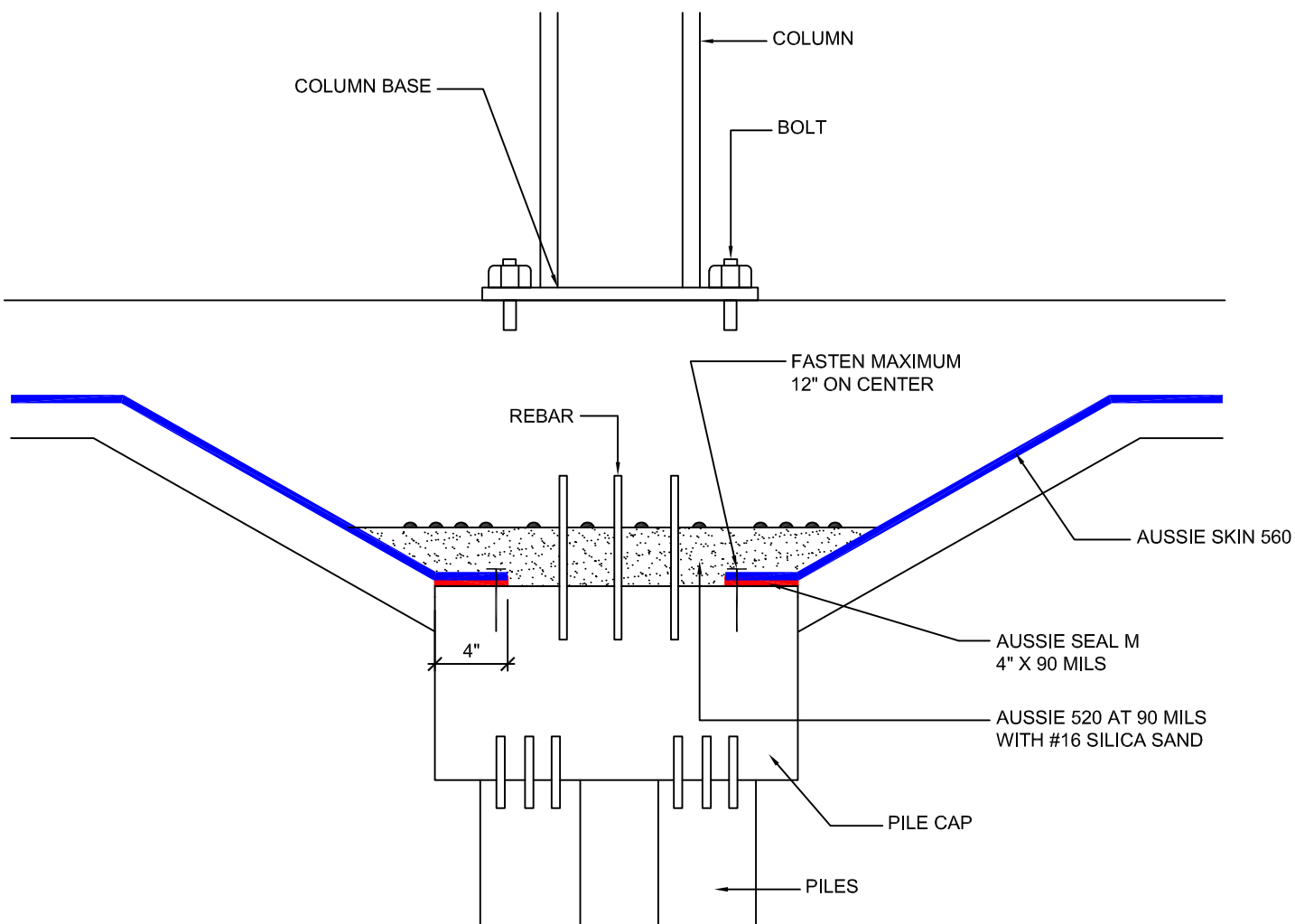
1. Aussie Skin 560 is a Methane and Shotcrete Approved Heavy Duty, Easy to Install, Puncture Resistant Sheet Waterproofing Membrane with added technologies creating excellent adhesion between the membrane and wet Concrete or Shot-Crete.

DETAIL #:

AVM-560-2610

Aussie Skin 560

Pile Cap Detail - Hydrostatic
Aussie Skin 560
Waterproofing and Methane Barrier



NOTES:

1. Aussie Skin 560 is a Methane and Shotcrete Approved Heavy Duty, Easy to Install, Puncture Resistant Sheet Waterproofing Membrane with added technologies creating excellent adhesion between the membrane and wet Concrete or Shot-Crete.
2. Concrete Surface must be free of dirt, debris, release agents and anything else that might inhibit bonding.
3. Concrete surface must be structurally sound, uniform and finished with a light broom finish.
4. Aussie Membrane 520 must cure 24 hours prior to concrete placement.

AVM Industries, Inc.
8245 Remmet Ave, Canoga Park, CA 91304

Quality Waterproofing Products

888.414.1041 818.888.0050
www.avmindustries.com

FILE NAME: 0560-2610

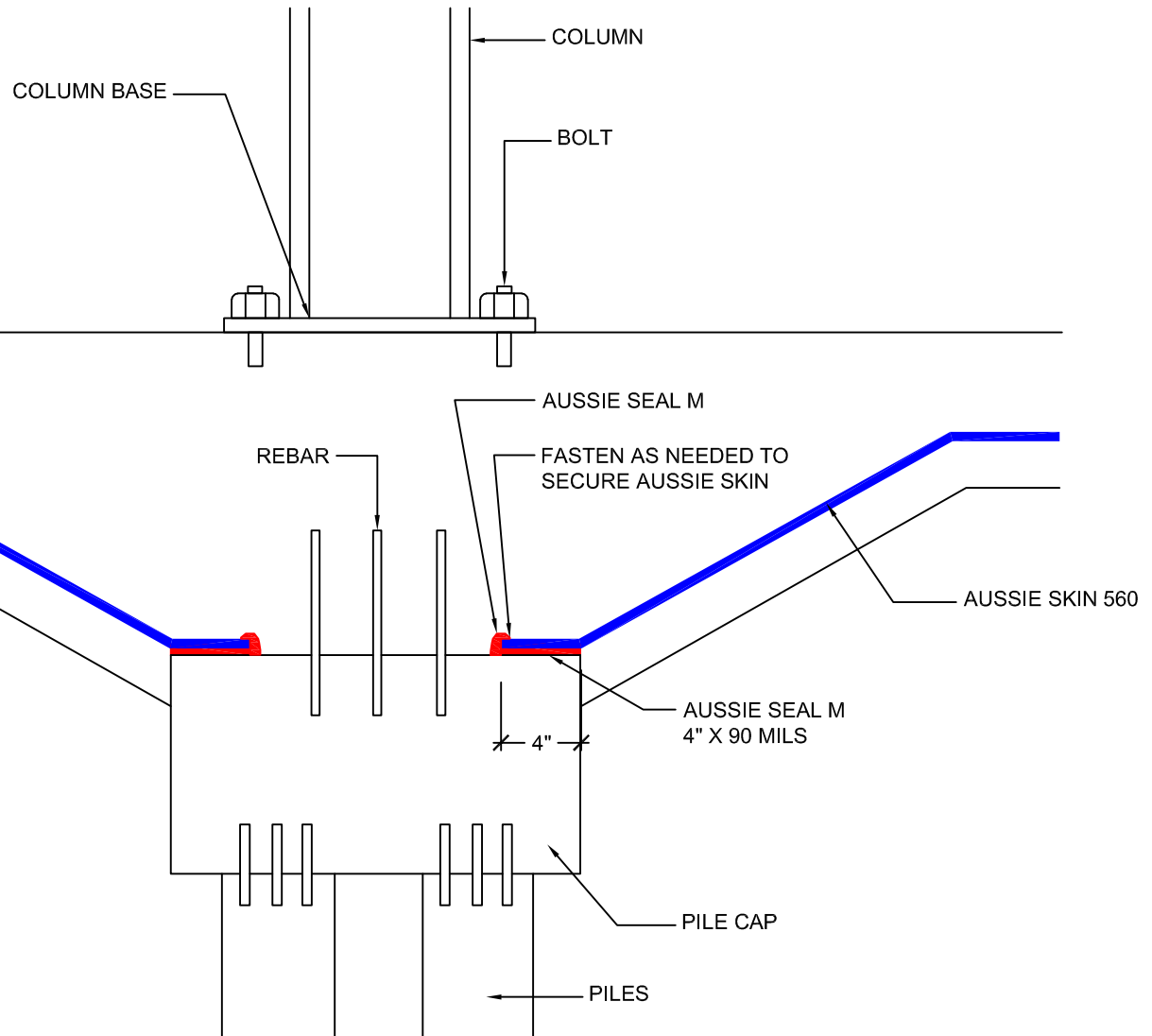
Protected by Copyright - AVM Industries, Inc. Revision Date 2/7/2019

DETAIL #:

AVM-560-2630

Aussie Skin 560

Pile Cap Detail - Non-Hydrostatic
Aussie Skin 560
Waterproofing and Methane Barrier



NOTES:

1. Aussie Skin 560 is a Methane and Shotcrete Approved Heavy Duty, Easy to Install, Puncture Resistant Sheet Waterproofing Membrane with added technologies creating excellent adhesion between the membrane and wet Concrete or Shot-Crete.
2. Concrete Surface must be free of dirt, debris, release agents and anything else that might inhibit bonding.
3. Concrete surface must be structurally sound, uniform and finished with a light broom finish.
4. All fasteners must be covered with Aussie Seal M.

AVM Industries, Inc.
8245 Remmet Ave, Canoga Park, CA 91304

Quality Waterproofing Products

888.414.1041 818.888.0050
www.avmindustries.com

FILE NAME: 0560-2630

Protected by Copyright - AVM Industries, Inc. Revision Date 2/7/2019

DETAIL #:

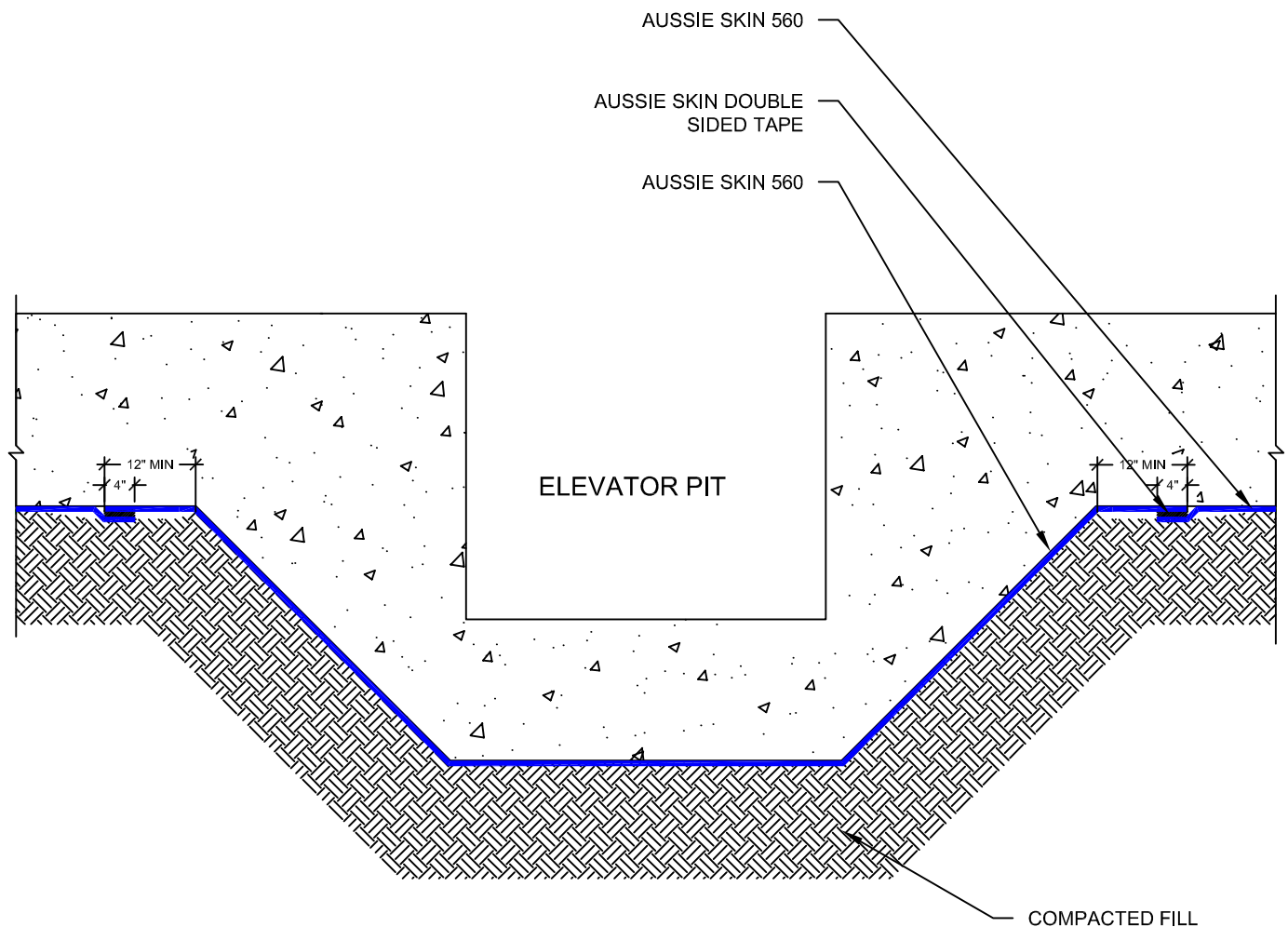
AVM-560-3000

Aussie Skin 560

Elevator Pit Over Aussie Skin

Aussie Skin 560

Waterproofing and Methane Barrier



NOTES:

1. Aussie Skin 560 is a Methane and Shotcrete Approved Heavy Duty, Easy to Install, Puncture Resistant Sheet Waterproofing Membrane with added technologies creating excellent adhesion between the membrane and wet Concrete or Shot-Crete.
2. Contact AVM if no drain board or protection board is specified.
3. All nails, screws etc used to hang the Aussie Skin above the water table must be non-rusting and sealed with AVM approved Sealant.

AVM Industries, Inc.
8245 Remmet Ave, Canoga Park, CA 91304

Quality Waterproofing Products

888.414.1041 818.888.0050
www.avmindustries.com

FILE NAME: 0560-3000

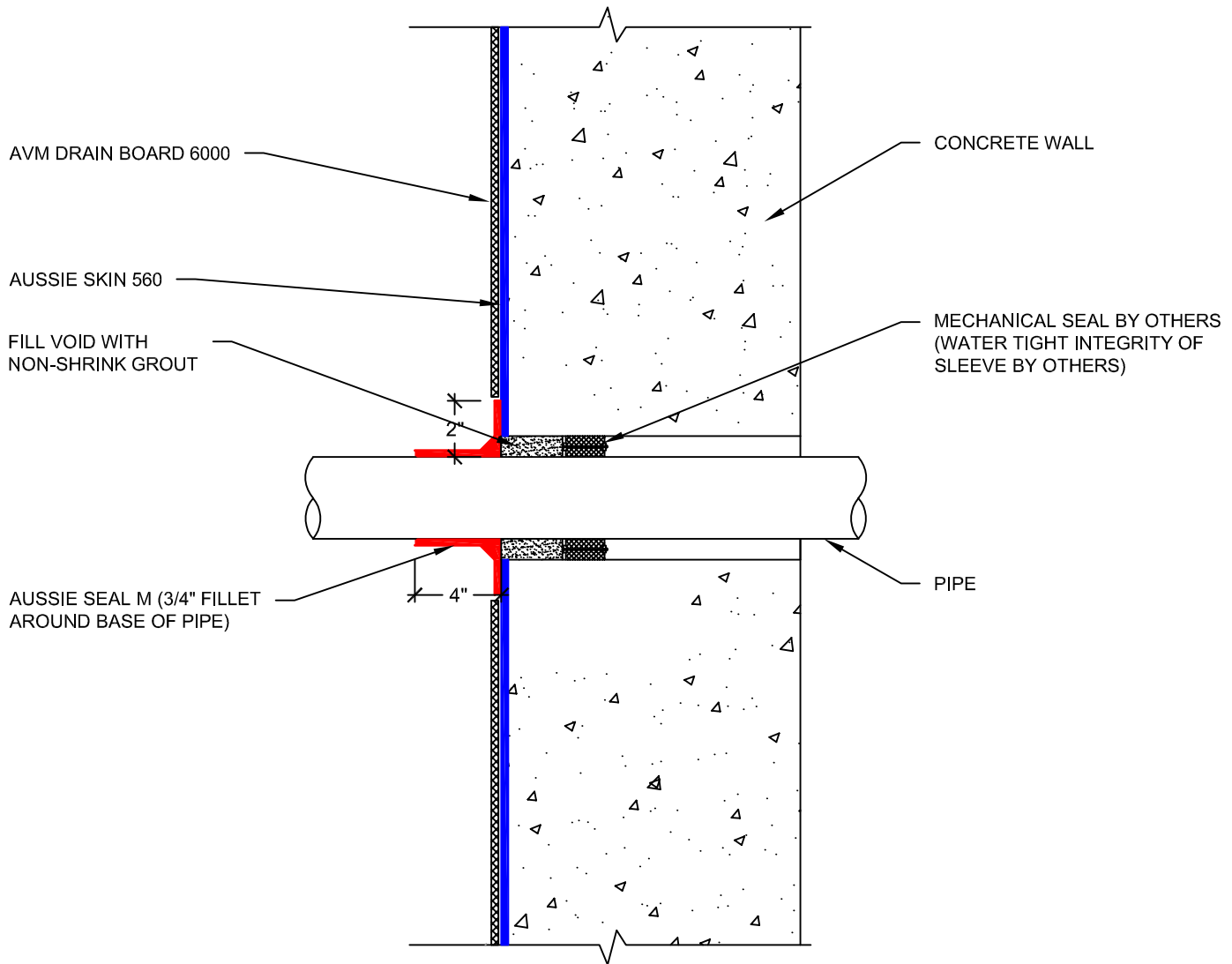
Protected by Copyright - AVM Industries, Inc. Revision Date 1/21/2019

DETAIL #:

AVM-560-4010

Aussie Skin 560

Cored Penetration
Aussie Skin 560
Waterproofing and Methane Barrier



NOTES:

1. Aussie Skin 560 is a Methane and Shotcrete Approved Heavy Duty, Easy to Install, Puncture Resistant Sheet Waterproofing Membrane with added technologies creating excellent adhesion between the membrane and wet Concrete or Shot-Crete.
2. Contact AVM if no drain board or protection board is specified.
3. All nails, screws etc used to hang the Aussie Skin above the water table must be non-rusting and sealed with AVM approved Sealant.

DETAIL #:

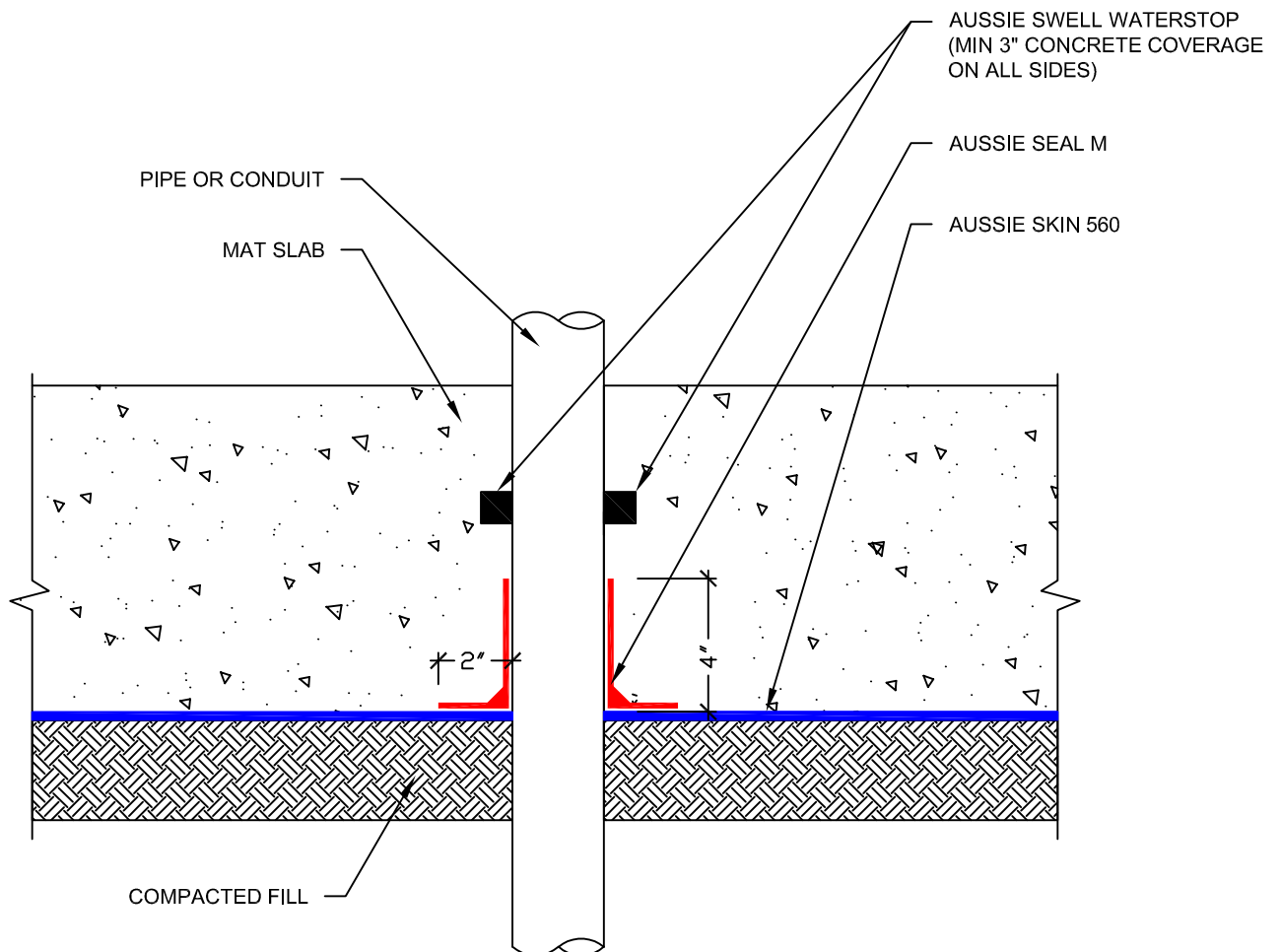
AVM-560-4015

Aussie Skin 560

Slab Penetration

Aussie Skin 560

Waterproofing and Methane Barrier



NOTES:

1. Aussie Skin 560 is a Methane and Shotcrete Approved Heavy Duty, Easy to Install, Puncture Resistant Sheet Waterproofing Membrane with added technologies creating excellent adhesion between the membrane and wet Concrete or Shot-Crete.
2. Contact AVM if no drain board or protection board is specified.
3. All nails, screws etc used to hang the Aussie Skin above the water table must be non-rusting and sealed with AVM approved Sealant.
4. Allow Aussie Seal M to "skin over" prior to placing concrete.

AVM Industries, Inc.
8245 Remmet Ave, Canoga Park, CA 91304

Quality Waterproofing Products

888.414.1041 818.888.0050
www.avmindustries.com

FILE NAME: 0560-4015

Protected by Copyright - AVM Industries, Inc. Revision Date 1/21/2019

DETAIL #:

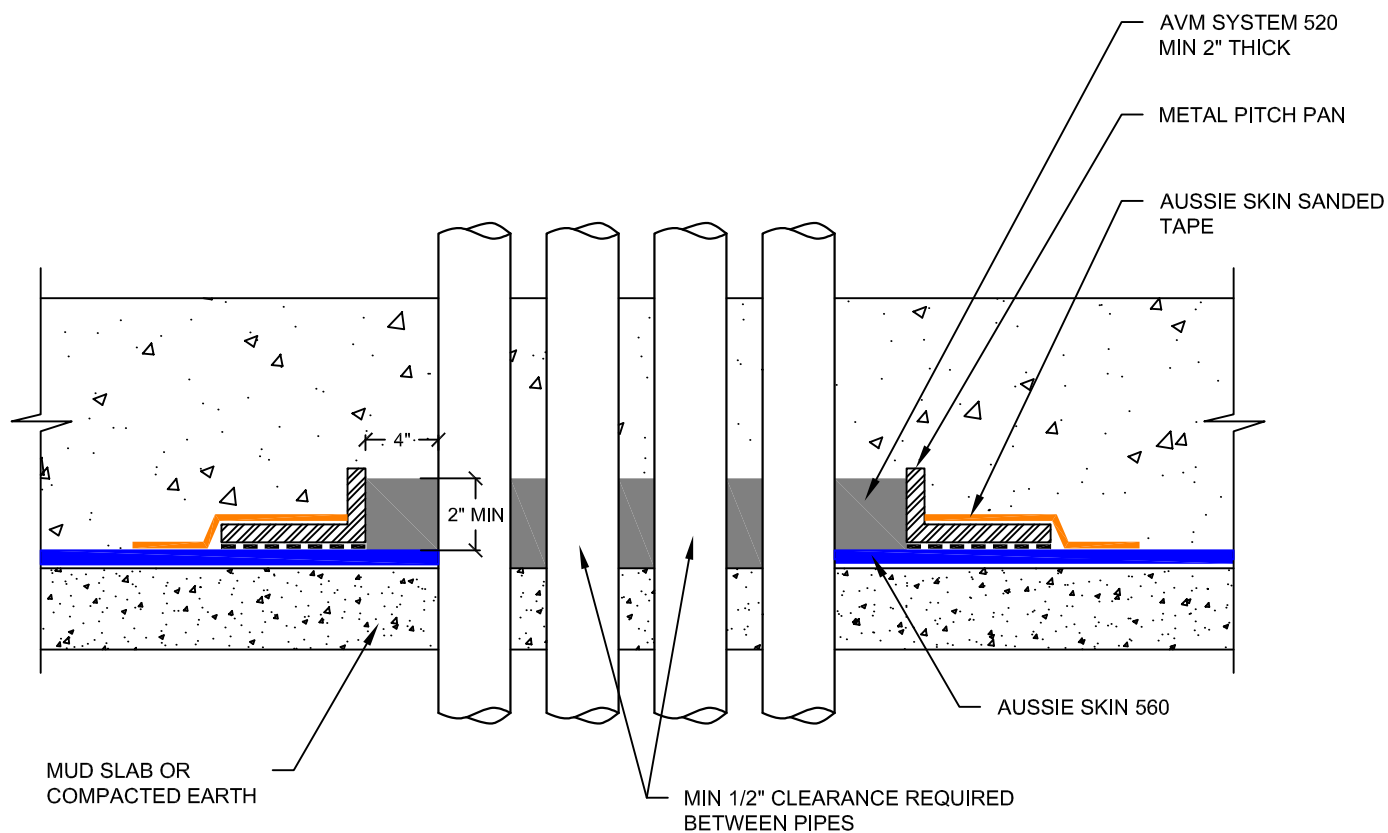
AVM-560-4020

Aussie Skin 560

Pipe Bank Pitch Pan

Aussie Skin 560

Waterproofing and Methane Barrier



NOTES:

1. Aussie Skin 560 is a Methane and Shotcrete Approved Heavy Duty, Easy to Install, Puncture Resistant Sheet Waterproofing Membrane with added technologies creating excellent adhesion between the membrane and wet Concrete or Shot-Crete.
2. Aussie Membrane 520 should be cured prior to concrete placement which may take up to 72 hours. Please consult AVM if scheduling does not allow this.

DETAIL #:

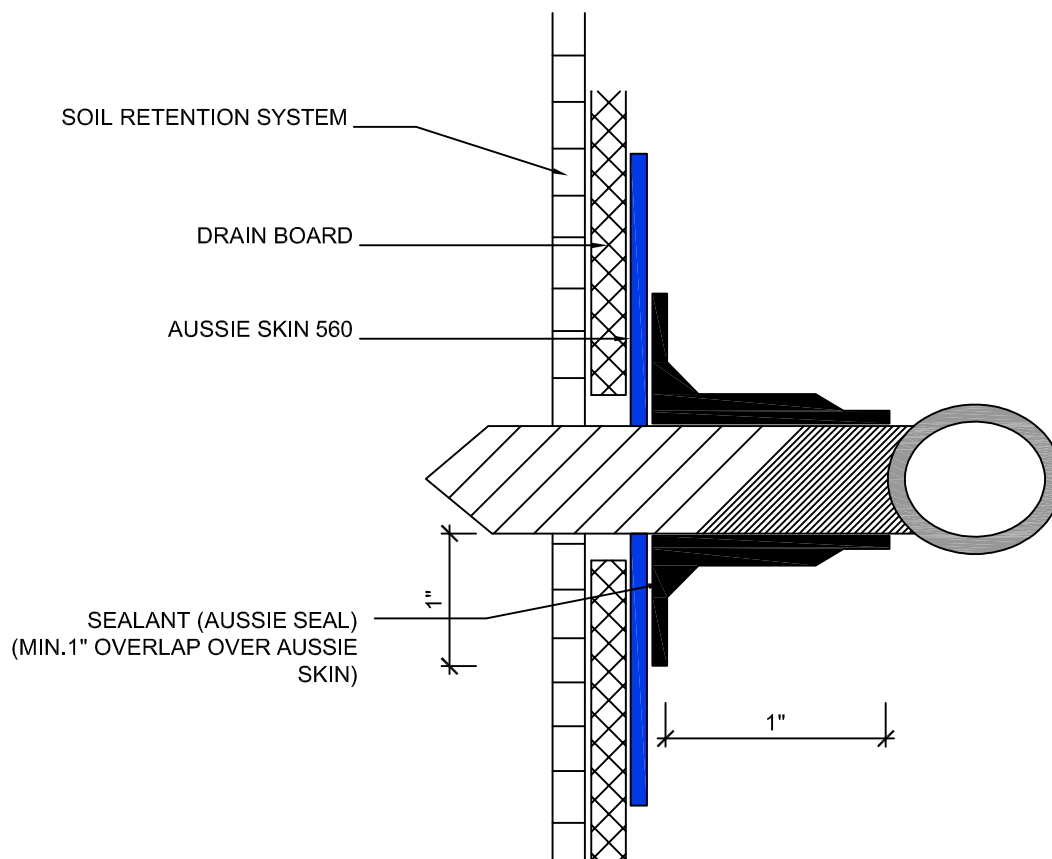
AVM-560-4100

Aussie Skin 560

Rebar Tie

Aussie Skin 560

Waterproofing and Methane Barrier



NOTES:

1. Aussie Skin 560 is a Methane and Shotcrete Approved Heavy Duty, Easy to Install, Puncture Resistant Sheet Waterproofing Membrane with added technologies creating excellent adhesion between the membrane and wet Concrete or Shot-Crete.
2. Contact AVM if no drain board or protection board is specified.
3. All nails, screws etc used to hang the Aussie Skin above the water table must be non-rusting and sealed with AVM approved Sealant.

AVM Industries, Inc.
8245 Remmet Ave, Canoga Park, CA 91304

Quality Waterproofing Products

888.414.1041 818.888.0050
www.avmindustries.com

FILE NAME: 0560-4100

Protected by Copyright - AVM Industries, Inc. Revision Date 1/21/2019

DETAIL #:

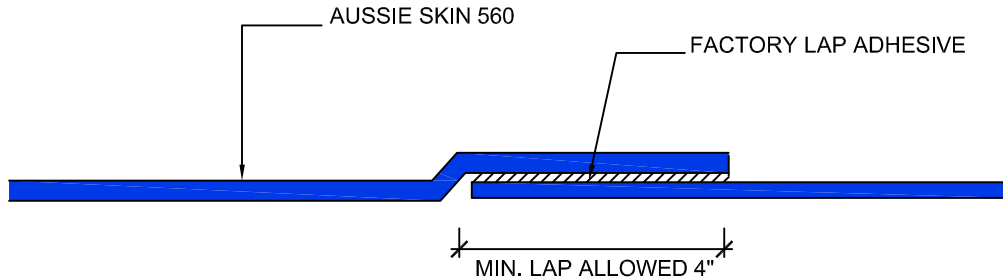
AVM-560-6000

AVM System 560

Lapping Detail
Aussie Skin 560
Waterproofing and Methane Barrier



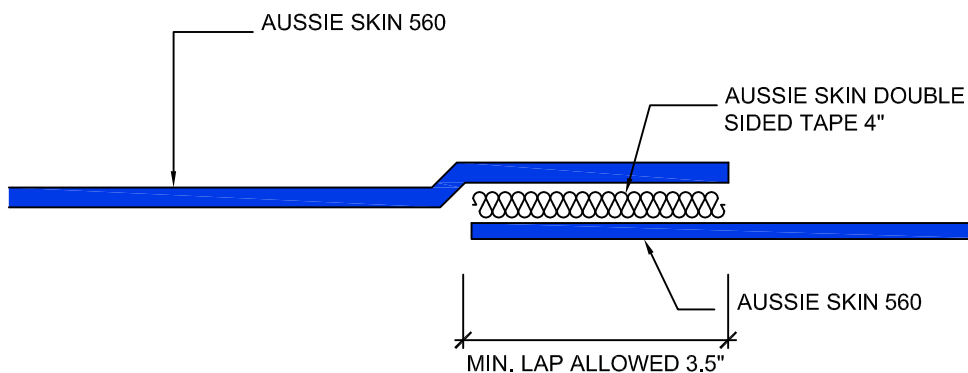
FACTORY LAP



Important Note: When installing the "Factory Lap", The Installation procedure should be as follows:

- 1) Remove the black plastic film from the factory lap to expose the adhesive.
- 2) Lay down the 2nd layer of Skin over the exposed Adhesive. (leave 1/8"-1/4" of adhesive exposed) Roll the steel roller over the 2nd layer of skin several times while applying significant pressure.
- 3) Verify seam is completely and properly bonded.

NON-FACTORY LAP



Important Note: When installing the "Non-Factory Lap", The Installation procedure should be as follows:

- 1) Remove the black plastic film from one side of the double-sided tape.
- 2) Lay down the Double-Sided Tape on the sanded side of the first layer of Aussie Skin.
- 3) THOROUGHLY COMPRESS THE DOUBLE-SIDED TAPE ONTO THE SANDED SIDE OF THE AUSSIE SKIN USING AVM'S APPROVED STEEL ROLLERS. (ROLL THE STEEL ROLLER OVER THE TAPE SEVERAL TIMES WHILE APPLYING SIGNIFICANT PRESSURE)
- 4) Carefully remove the clear film (2nd layer of film) from the Double-Sided Tape.
- 5) Lay down the 2nd layer of Skin over the exposed double-Sided Tape. (Leave 1/8"-1/4" of tape exposed) Roll the steel roller over the 2nd layer of skin several times while applying significant pressure.
- 6) Verify seam is completely and properly bonded.
- 7) If multiple pieces of Double-Sided Tape are needed, overlap them.

NOTES:

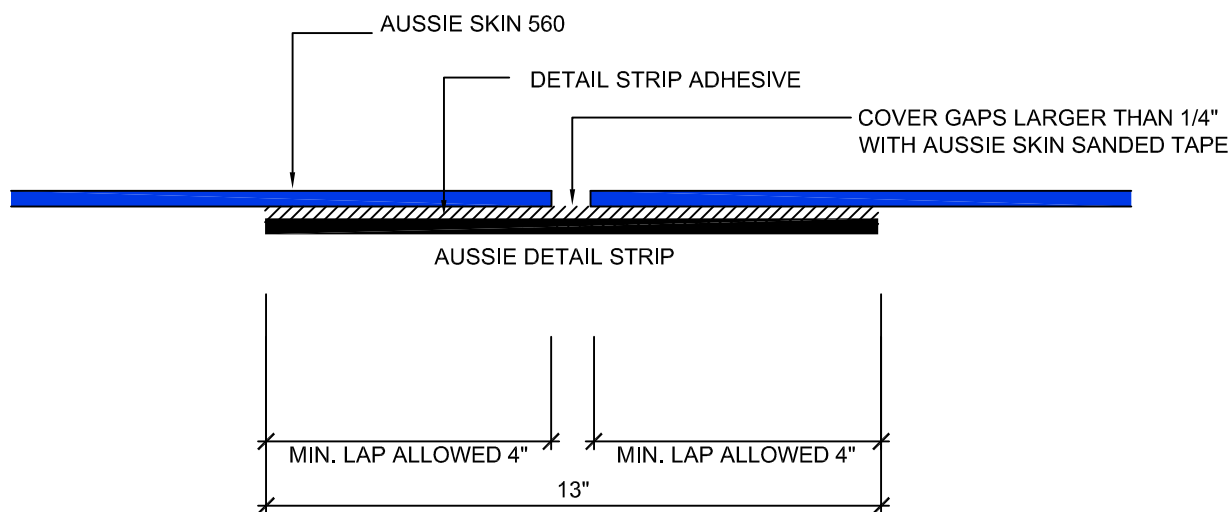
1. Aussie Skin 560 is a Methane and Shotcrete Approved Heavy Duty, Easy to Install, Puncture Resistant Sheet Waterproofing Membrane with added technologies creating excellent adhesion between the membrane and wet Concrete or Shot-Crete.
2. Contact AVM if no drain board or protection board is specified.
3. All nails, screws etc used to hang the Aussie Skin above the water table must be non-rusting and sealed with AVM approved Sealant.

DETAIL #:

AVM-560-6001

Aussie Skin 560

Non-Factory Lap with Detail Strip
Aussie Skin 560
Waterproofing and Methane Barrier



Important Note: When installing the "Alternative Non-Factory Lap", The Installation procedure should be as follows:

- 1) Remove the black plastic film from the Detail Strip to expose the Adhesive.
- 2) Lay down the first layer of Aussie Skin over the exposed Adhesive covering half the width of the detail strip. Roll the steel roller over the seam several times while applying significant pressure.
- 3) Lay down the 2nd layer of Aussie Skin over the remaining exposed adhesive. Leave 1/8"-1/4" of adhesive exposed between the two sheets of Aussie Skin. Roll the steel roller over the seam several times while applying significant pressure.
- 4) Verify seam is complete and properly bonded.

NOTES:

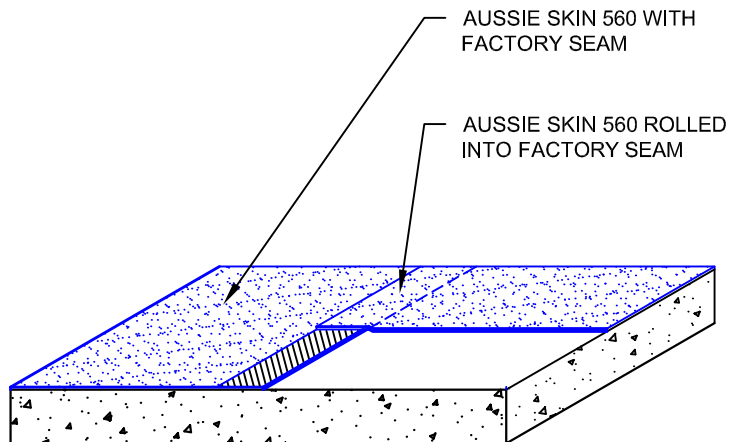
1. Aussie Skin 560 is a Methane and Shotcrete Approved Heavy Duty, Easy to Install, Puncture Resistant Sheet Waterproofing Membrane with added technologies creating excellent adhesion between the membrane and wet Concrete or Shot-Crete.
2. Contact AVM if no drain board or protection board is specified.
3. All nails, screws etc used to hang the Aussie Skin above the water table must be non-rusting and sealed with AVM approved Sealant.

DETAIL #:

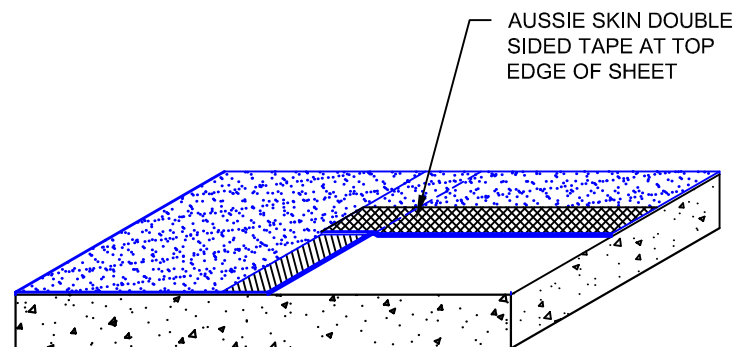
AVM-560-6002

Aussie Skin 560

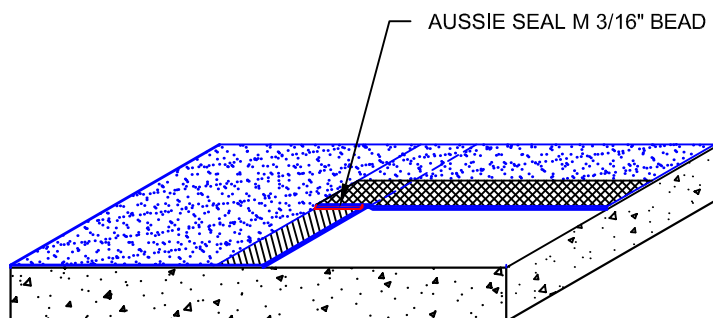
T-Lap Detail
Aussie Skin 560
Waterproofing and Methane Barrier



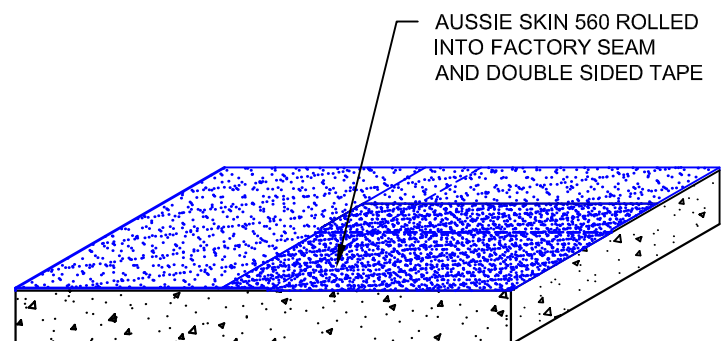
Step #1



Step #2



Step #3



Step #4

Notes:

1. Aussie Skin 560 is a Methane and Shotcrete Approved Heavy Duty, Easy to Install, Puncture Resistant Sheet Waterproofing Membrane with added technologies creating excellent adhesion between the membrane and wet Concrete or Shot-Crete.
2. Contact AVM if no drain board or protection board is specified.
3. All nails, screws etc used to hang the Aussie Skin above the water table must be non-rusting and sealed with AVM approved Sealant.

DETAIL #:

AVM-560-6010

Aussie Skin 560

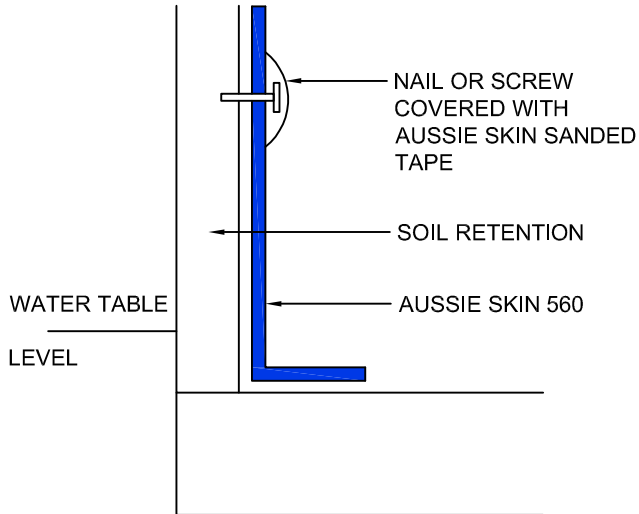
Nail/Screw Detail

Aussie Skin 560

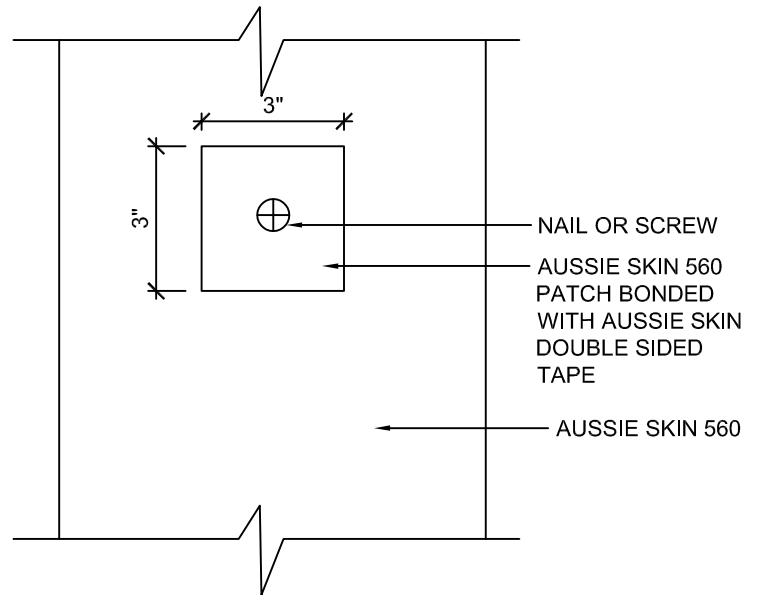
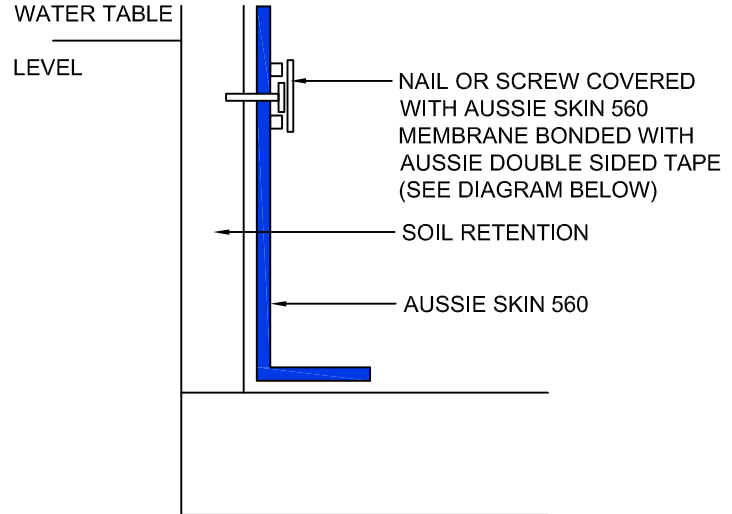
Waterproofing and Methane Barrier



NON-WATERTABLE PATCH



WATERTABLE PATCH



NOTES:

1. Aussie Skin 560 is a Methane and Shotcrete Approved Heavy Duty, Easy to Install, Puncture Resistant Sheet Waterproofing Membrane with added technologies creating excellent adhesion between the membrane and wet Concrete or Shot-Crete.
2. Contact AVM if no drain board or protection board is specified.
3. All nails, screws etc used to hang the Aussie Skin above the water table must be non-rusting and sealed with AVM approved Sealant.

DETAIL #:

AVM-560-6200

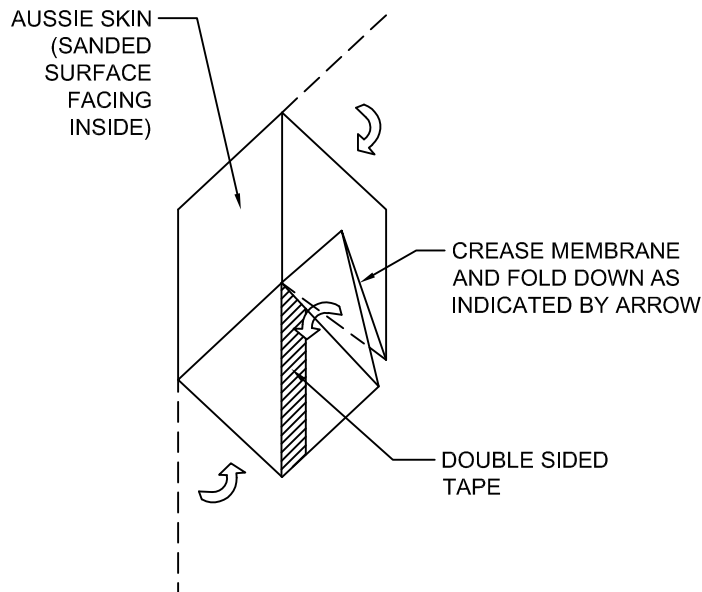
Aussie Skin 560

Inside Corner Detail
Aussie Skin 560
Waterproofing and Methane Barrier



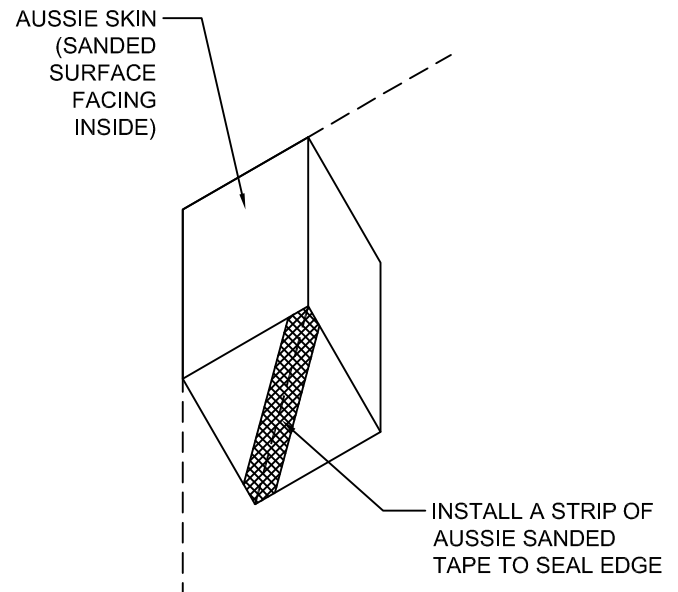
1

SANDED SURFACE FACING INSIDE



2

SANDED SURFACE FACING INSIDE



NOTES:

1. Aussie Skin 560 is a Methane and Shotcrete Approved Heavy Duty, Easy to Install, Puncture Resistant Sheet Waterproofing Membrane with added technologies creating excellent adhesion between the membrane and wet Concrete or Shot-Crete.
2. Contact AVM if no drain board or protection board is specified.
3. All nails, screws etc used to hang the Aussie Skin above the water table must be non-rusting and sealed with AVM approved Sealant.

DETAIL #:

AVM-560-6260

Aussie Skin 560

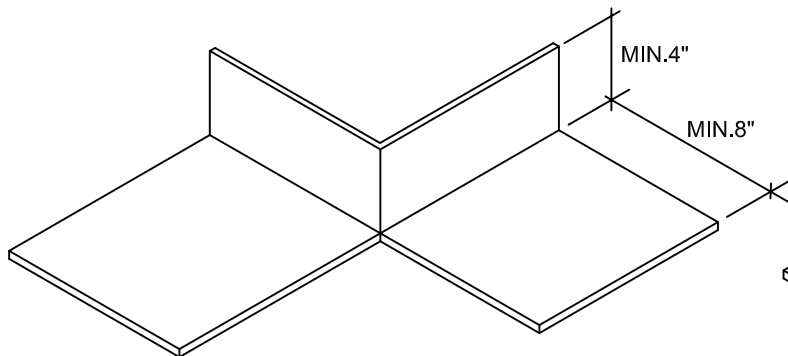
Outside Corner Detail at Bottom of Wall

Aussie Skin 560

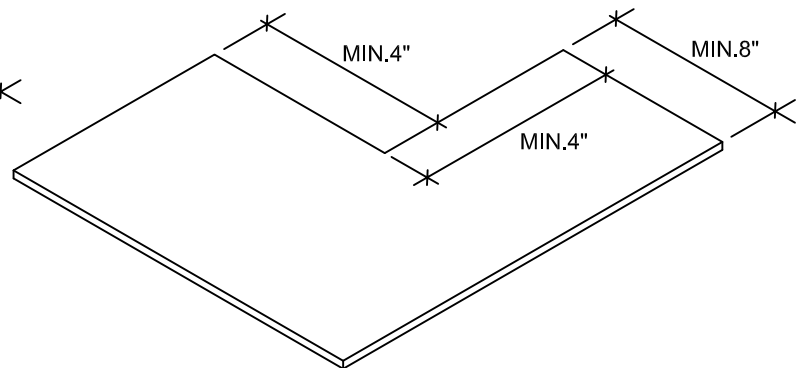
Waterproofing and Methane Barrier



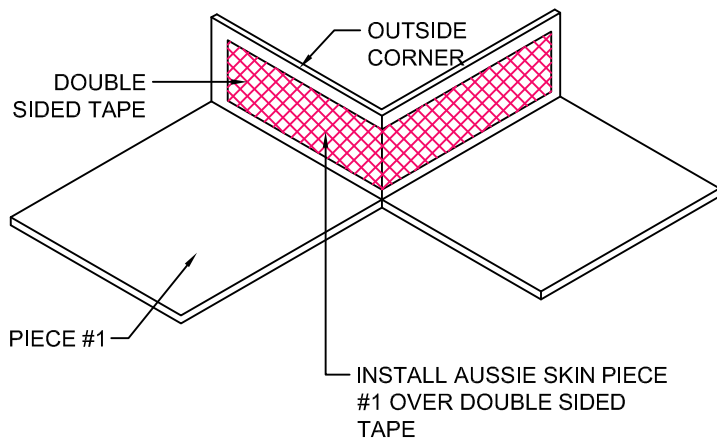
PIECE #1



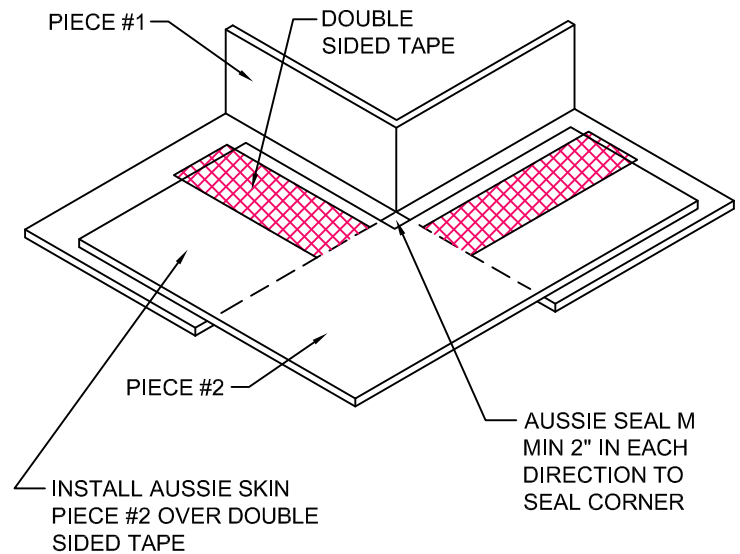
PIECE #2



STEP 1



STEP 2



NOTES:

1. Aussie Skin 560 is a Methane and Shotcrete Approved Heavy Duty, Easy to Install, Puncture Resistant Sheet Waterproofing Membrane with added technologies creating excellent adhesion between the membrane and wet Concrete or Shot-Crete.
2. Contact AVM if no drain board or protection board is specified.
3. All nails, screws etc used to hang the Aussie Skin above the water table must be non-rusting and sealed with AVM approved Sealant.

AVM Industries, Inc.
8245 Remmet Ave, Canoga Park, CA 91304

Quality Waterproofing Products

888.414.1041 818.888.0050
www.avmindustries.com

FILE NAME: 0560-6260

Protected by Copyright - AVM Industries, Inc. Revision Date 1/21/2019