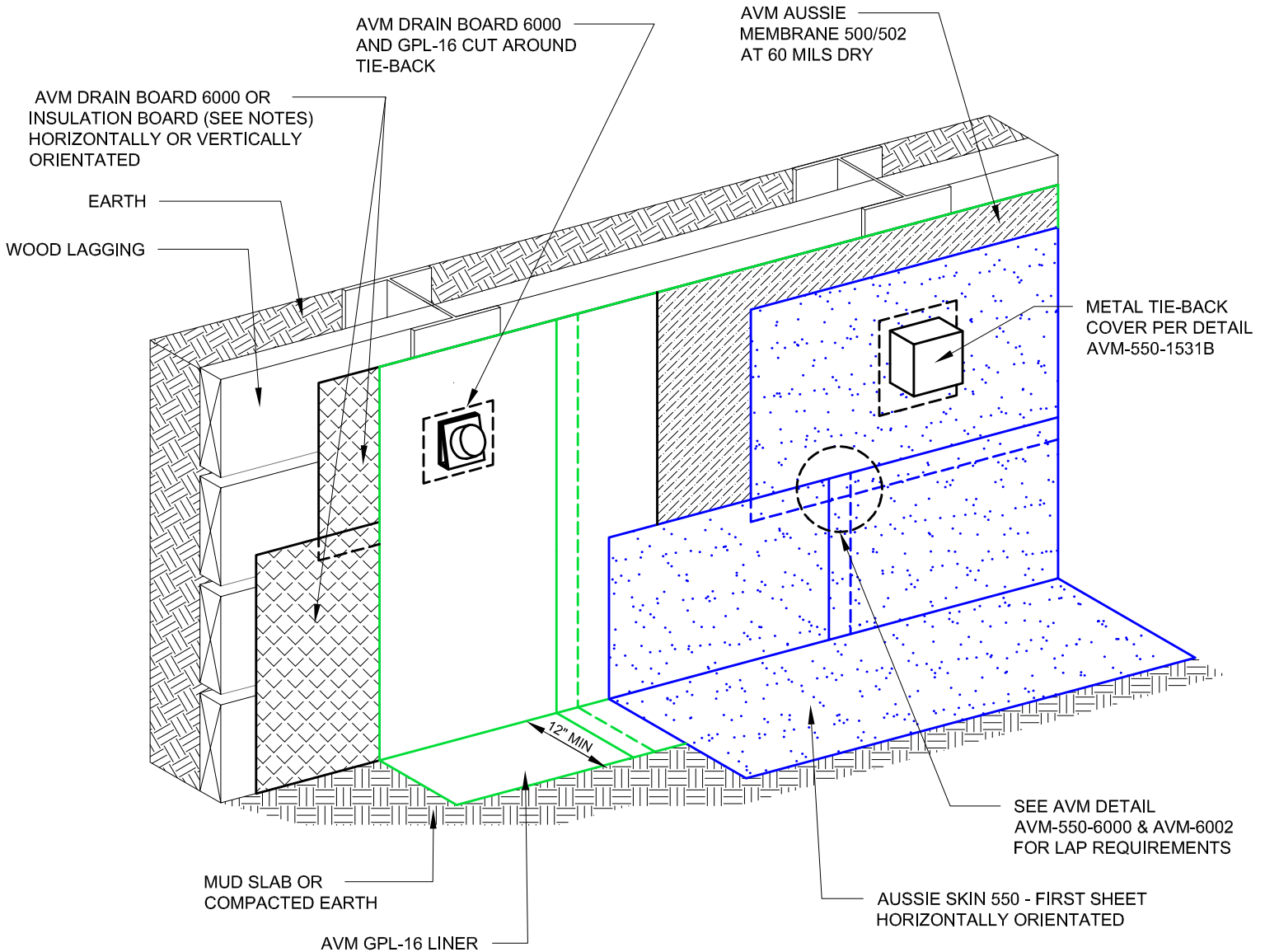


DETAIL #:
0550-0001B
AVM System 550
Aussie Skin 550

Dual System Patent Pending

Typical Lagging Wall Dual System (Hydrostatic)



Notes:

1. Aussie Skin 550 is a Heavy, Duty, Easy to Install, Puncture Resistant Sheet Waterproofing Membrane with added technologies creating excellent adhesion between the membrane and wet Concrete or Shot-Crete.
2. Contact AVM if no drain board or protection board is specified.
3. Remove/grind/repair as necessary any other protrusions, sharp edges, etc that may puncture or damage the membrane.
4. When using nails to hang the membrane, make sure all nails are flush with the membrane's surface or slightly sunken in below it. (Nails protruding above the membrane's surface may puncture the membrane)
5. All nails, screws etc used to hang the Aussie Skin above the water table must be non-rusting and sealed with Aussie Seal M.
6. Install the Aussie Membrane 500/502 (min 60 mils dry) over a polyolefin liner (Min 15 Mils thick)
7. Drain board must be connected to a permanent dewatering system if used in hydrostatic conditions.

AVM Industries, Inc.
8245 Remmet Ave, Canoga Park, CA 91304

Quality Waterproofing Products

888.414.1041 818.888.0050
www.avmindustries.com

FILE NAME: 0550-0001B

Protected by Copyright - AVM Industries, Inc. Revision Date 3/7/2019