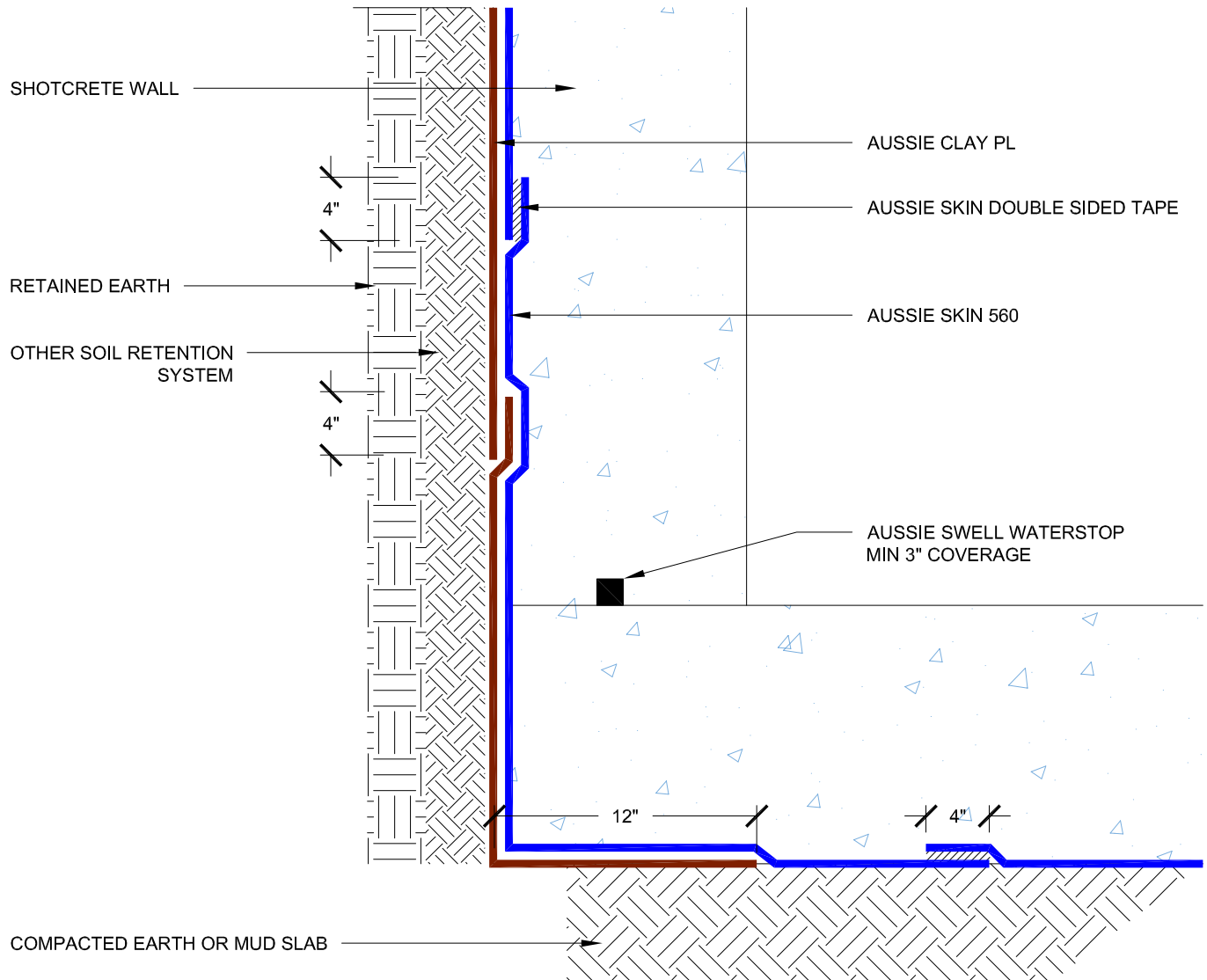


DETAIL #:  
0560-1522B  
AVM System 560  
Aussie Skin 560

Blind Side Waterproofing over Soil  
Retention System (other)  
Aussie Clay Dual System - Hydrostatic



**Notes:**

1. Aussie Skin 560 is Methane and Shot-Crete approved Heavy, Duty, Easy to Install, Puncture Resistant Sheet Waterproofing Membrane with added technologies creating excellent adhesion between the membrane and wet Concrete or Shot-Crete.
2. Aussie Clay & Aussie Clay PL are bentonite sheet membranes for waterproofing below-grade vertical and horizontal surfaces, including blindside and backfilled applications. Aussie Clay can be used with shotcrete or cast in place concrete in hydrostatic or non-hydrostatic conditions.
3. Fasten Aussie Clay with pneumatic staples or 1" washer-head fasteners placed maximum 24" on center
4. Install Aussie Clay and Aussie Clay PL with gray geotextile facing installer.
5. Overlap sheet edges 4" and stagger seams min 12"