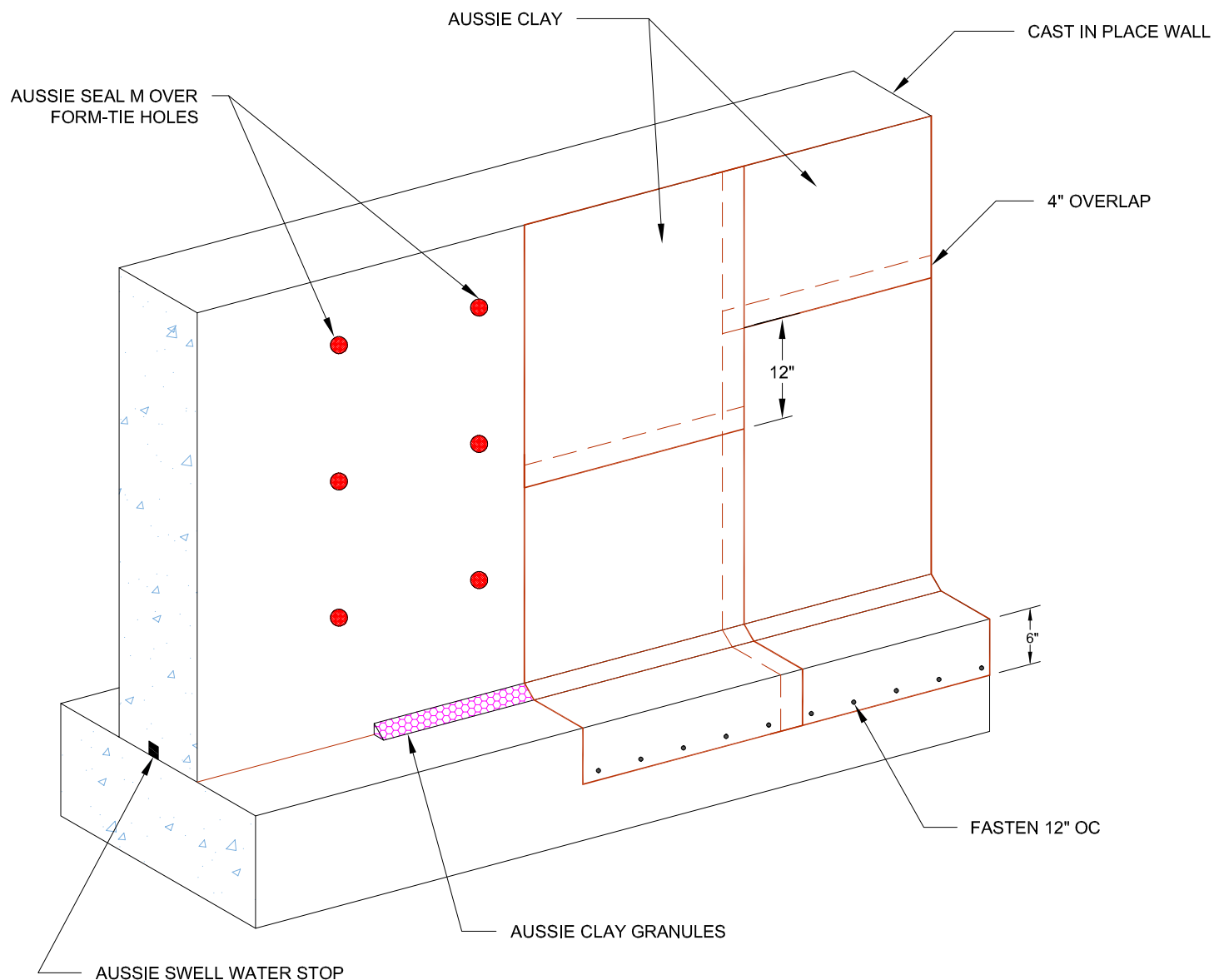


DETAIL #:
0590-0002

AVM System 590

Aussie Clay

Backfilled Wall Installation - Option 1



Notes:

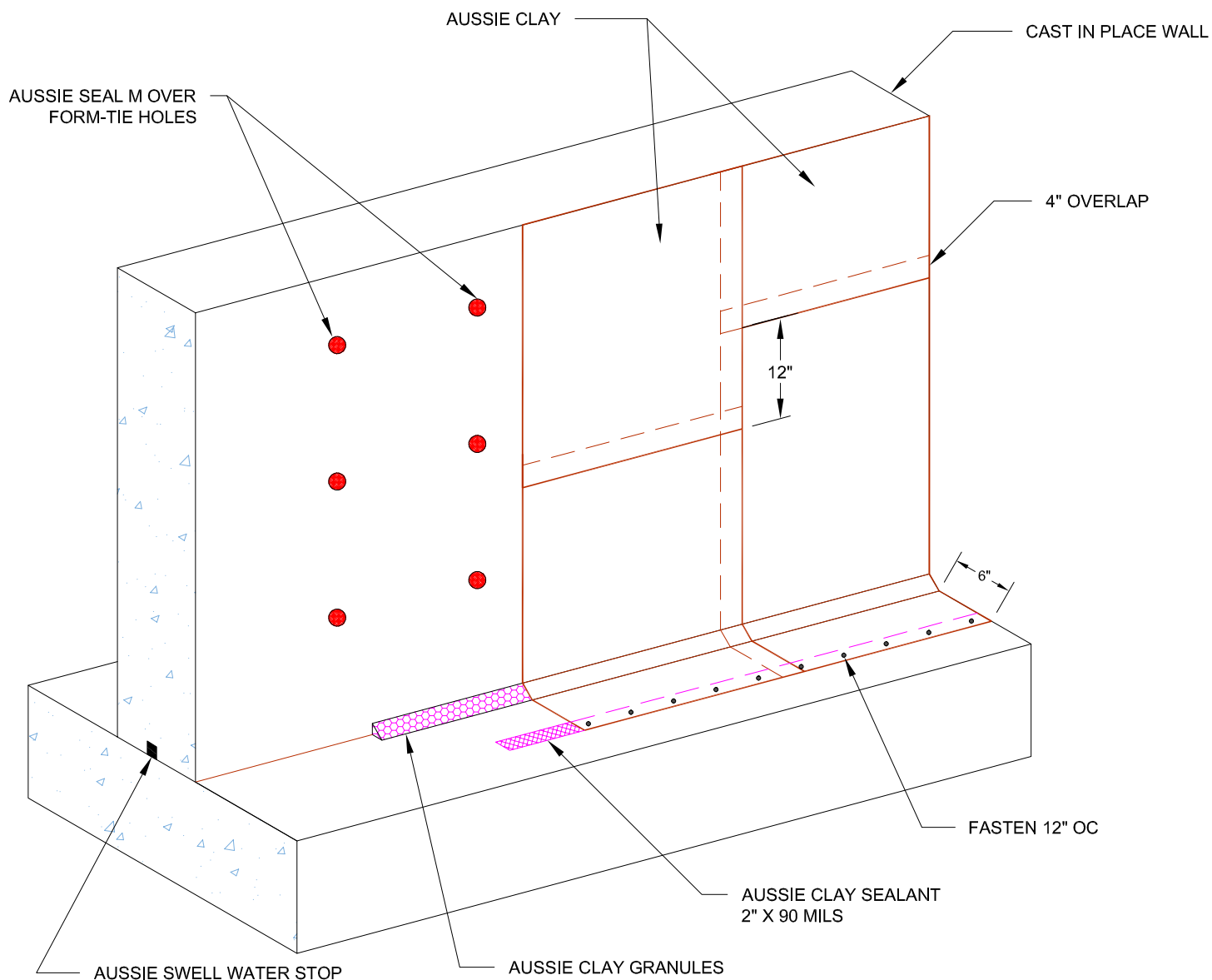
1. Aussie Clay & Aussie Clay PL are bentonite sheet membranes for waterproofing below-grade vertical and horizontal surfaces, including blind side and backfilled applications. Aussie Clay can be used with shotcrete or cast in place concrete in hydrostatic or non-hydrostatic conditions.
2. Fasten Aussie Clay with washer-head fasteners placed maximum 24" on center
3. Install Aussie Clay with gray geotextile against concrete. Install Aussie Clay PL with poly liner facing installer
4. Overlap sheet edges 4" and stagger seams min 12"

DETAIL #:
0590-0003

AVM System 590

Aussie Clay

Backfilled Wall Installation - Option 2



Notes:

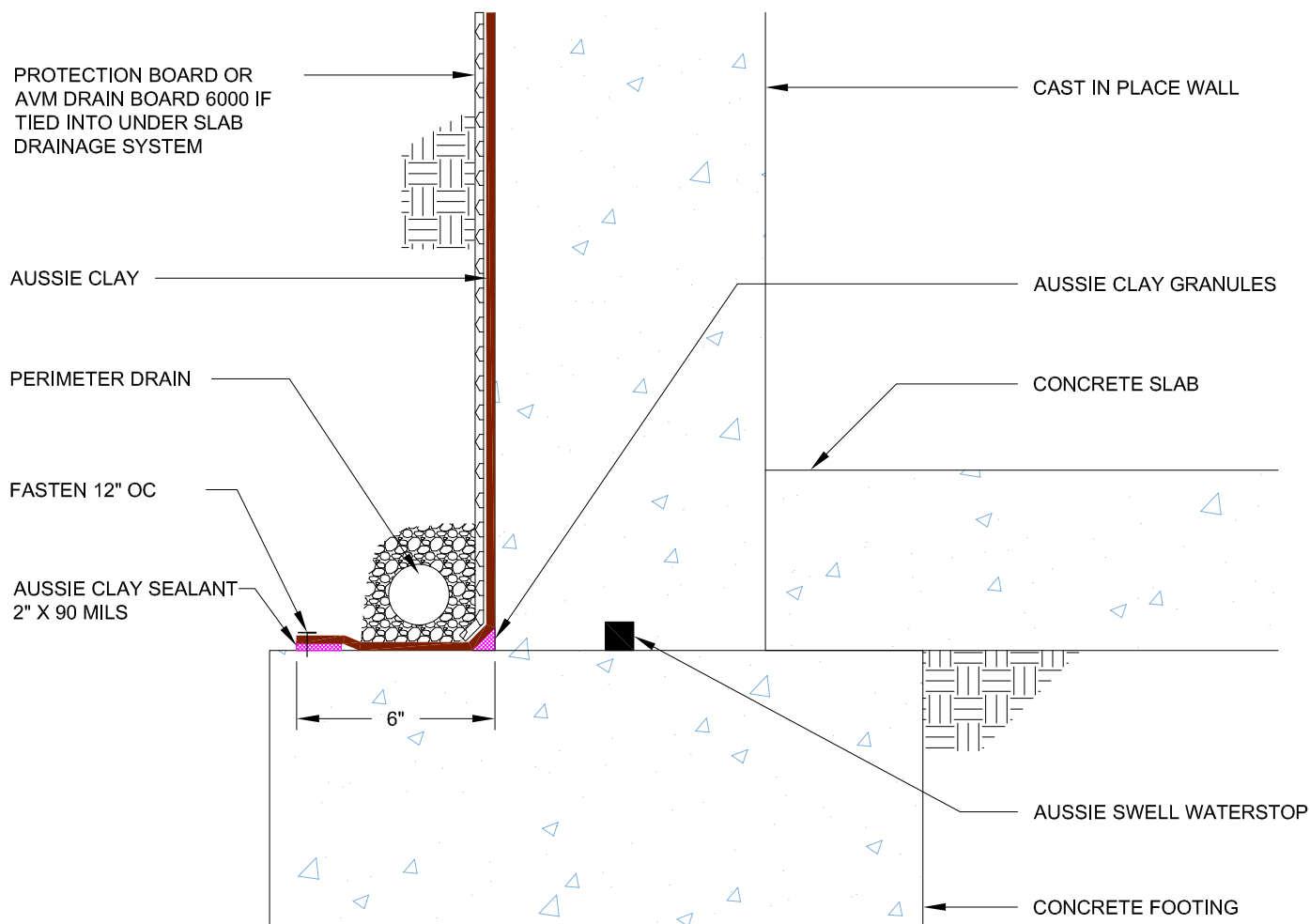
1. Aussie Clay & Aussie Clay PL are bentonite sheet membranes for waterproofing below-grade vertical and horizontal surfaces, including blind side and backfilled applications. Aussie Clay can be used with shotcrete or cast in place concrete in hydrostatic or non-hydrostatic conditions.
2. Fasten Aussie Clay with washer-head fasteners placed maximum 24" on center
3. Install Aussie Clay with gray geotextile against concrete. Install Aussie Clay PL with poly liner facing installer
4. Overlap sheet edges 4" and stagger seams min 12"

DETAIL #:
0590-0102A

AVM System 590

Aussie Clay

Backfilled Wall - Option 1 Non-Hydrostatic



Notes:

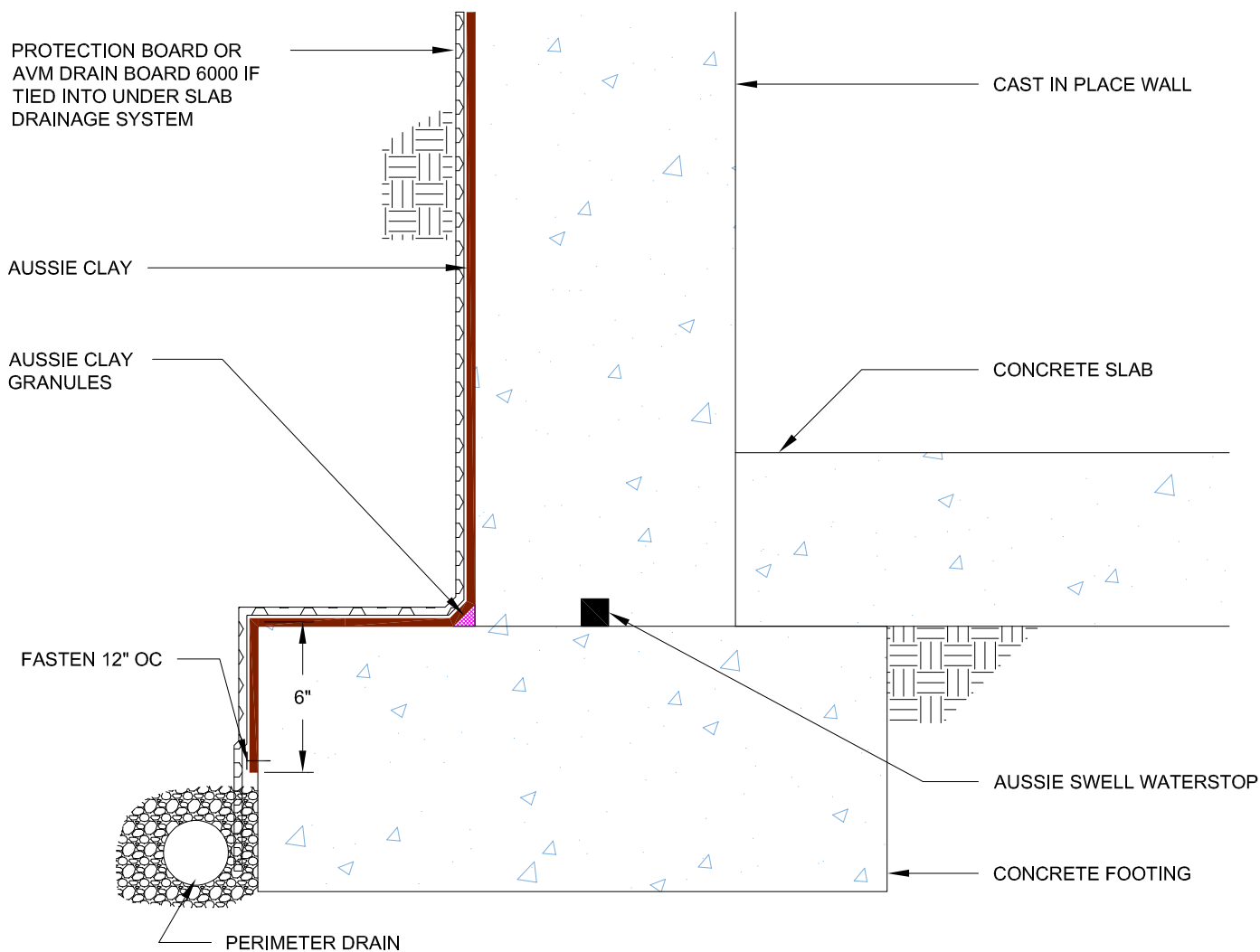
1. Aussie Clay & Aussie Clay PL are bentonite sheet membranes for waterproofing below-grade vertical and horizontal surfaces, including blind side and backfilled applications. Aussie Clay can be used with shotcrete or cast in place concrete in hydrostatic or non-hydrostatic conditions.
2. Fasten Aussie Clay with washer-head fasteners placed maximum 24" on center
3. Install Aussie Clay with gray geotextile against concrete. Install Aussie Clay PL with poly liner facing installer
4. Overlap sheet edges 4" and stagger seams min 12"

DETAIL #:
0590-0102B

AVM System 590

Aussie Clay

Backfilled Wall - Option 2 Non-Hydrostatic



Notes:

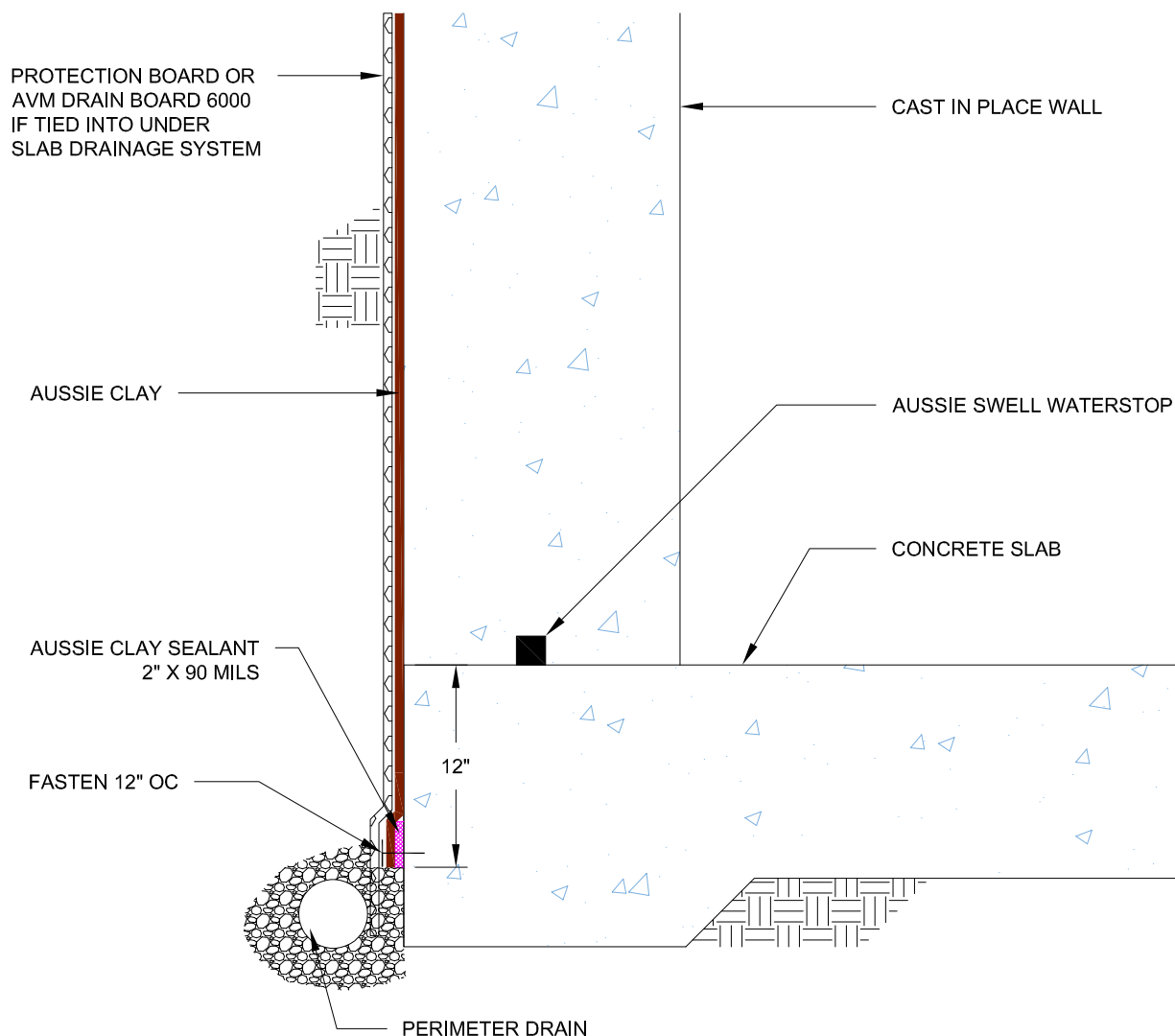
1. Aussie Clay & Aussie Clay PL are bentonite sheet membranes for waterproofing below-grade vertical and horizontal surfaces, including blind side and backfilled applications. Aussie Clay can be used with shotcrete or cast in place concrete in hydrostatic or non-hydrostatic conditions.
2. Fasten Aussie Clay with washer-head fasteners placed maximum 24" on center
3. Install Aussie Clay with gray geotextile against concrete. Install Aussie Clay PL with poly liner facing installer
4. Overlap sheet edges 4" and stagger seams min 12"

DETAIL #:
0590-0103

AVM System 590

Aussie Clay

Backfilled Wall - Option 3 Non-Hydrostatic



Notes:

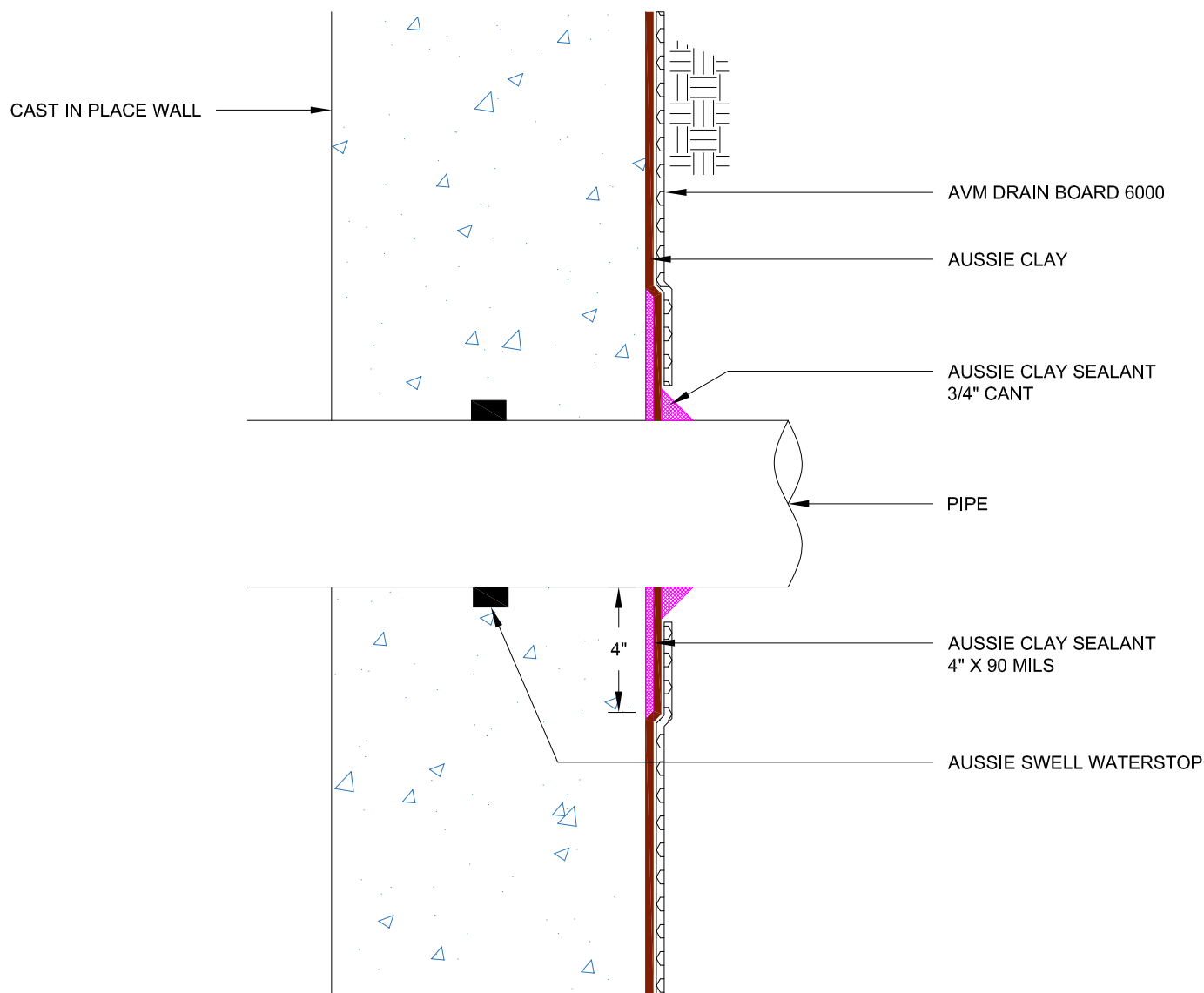
1. Aussie Clay & Aussie Clay PL are bentonite sheet membranes for waterproofing below-grade vertical and horizontal surfaces, including blind side and backfilled applications. Aussie Clay can be used with shotcrete or cast in place concrete in hydrostatic or non-hydrostatic conditions.
2. Fasten Aussie Clay with washer-head fasteners placed maximum 24" on center
3. Install Aussie Clay with gray geotextile against concrete. Install Aussie Clay PL with poly liner facing installer
4. Overlap sheet edges 4" and stagger seams min 12"

DETAIL #:
0590-0205

AVM System 590

Aussie Clay

Pipe Penetration Backfilled Wall Non-Hydrostatic



Notes:

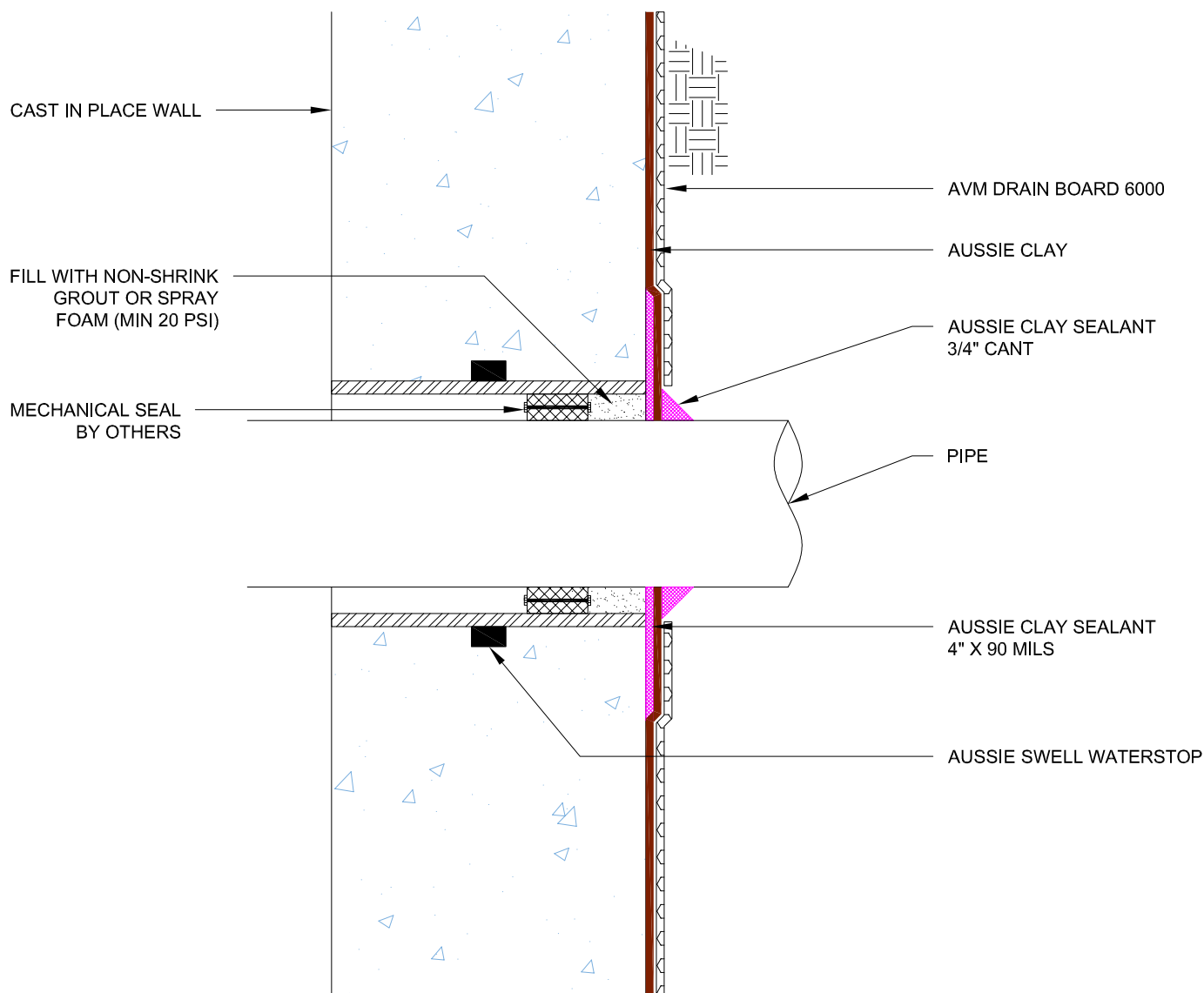
1. Aussie Clay & Aussie Clay PL are bentonite sheet membranes for waterproofing below-grade vertical and horizontal surfaces, including blind side and backfilled applications. Aussie Clay can be used with shotcrete or cast in place concrete in hydrostatic or non-hydrostatic conditions.
2. Install Aussie Clay with gray geotextile against concrete. Install Aussie Clay PL with poly liner facing installer
3. Overlap sheet edges 4" and stagger seams min 12"
4. All gaps around penetrations must be filled with solid material (grout or expanding spray foam)

DETAIL #:
0590-0207

AVM System 590

Aussie Clay

Sleeved Pipe Penetration Backfilled Wall Non-Hydrostatic



Notes:

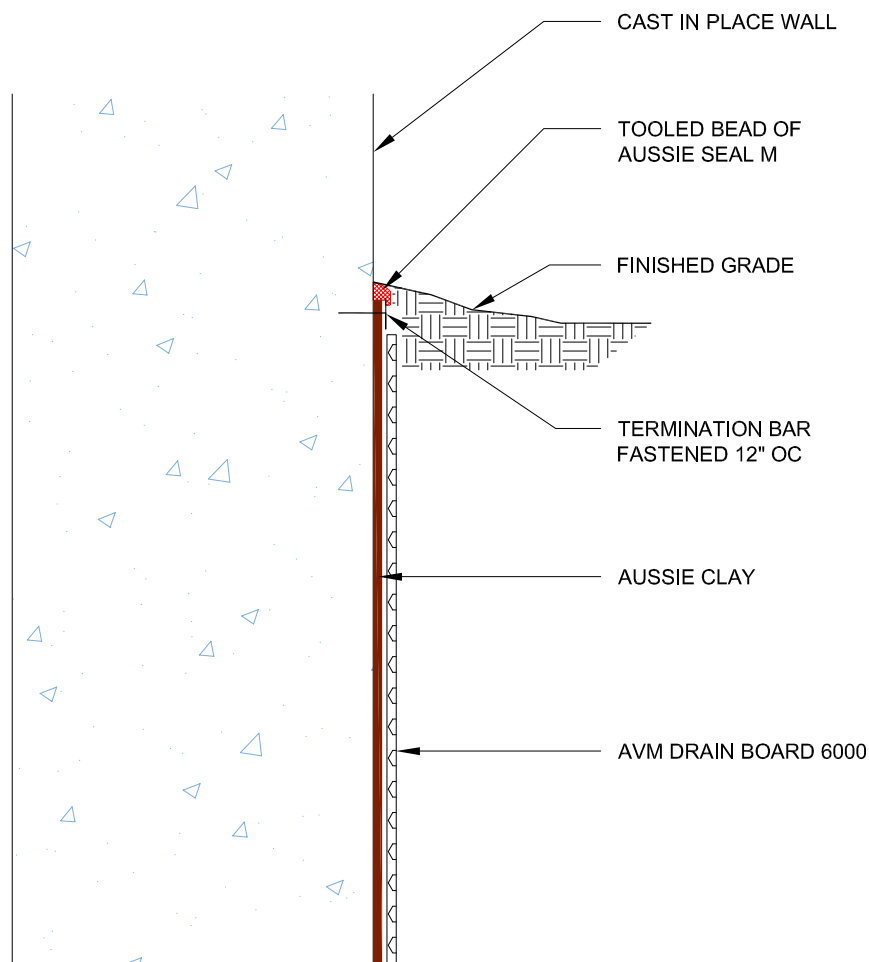
1. Aussie Clay & Aussie Clay PL are bentonite sheet membranes for waterproofing below-grade vertical and horizontal surfaces, including blind side and backfilled applications. Aussie Clay can be used with shotcrete or cast in place concrete in hydrostatic or non-hydrostatic conditions.
2. Install Aussie Clay with gray geotextile against concrete. Install Aussie Clay PL with poly liner facing installer
3. Fasten Aussie Clay with washer-head fasteners placed maximum 24" on center
4. Overlap sheet edges 4" and stagger seams min 12"
5. All gaps around penetrations must be filled with solid material (grout or expanding spray foam)

DETAIL #:
0590-0302

AVM System 590

Aussie Clay

Grade Termination Backfilled Wall Option 1 Non-Hydrostatic



Notes:

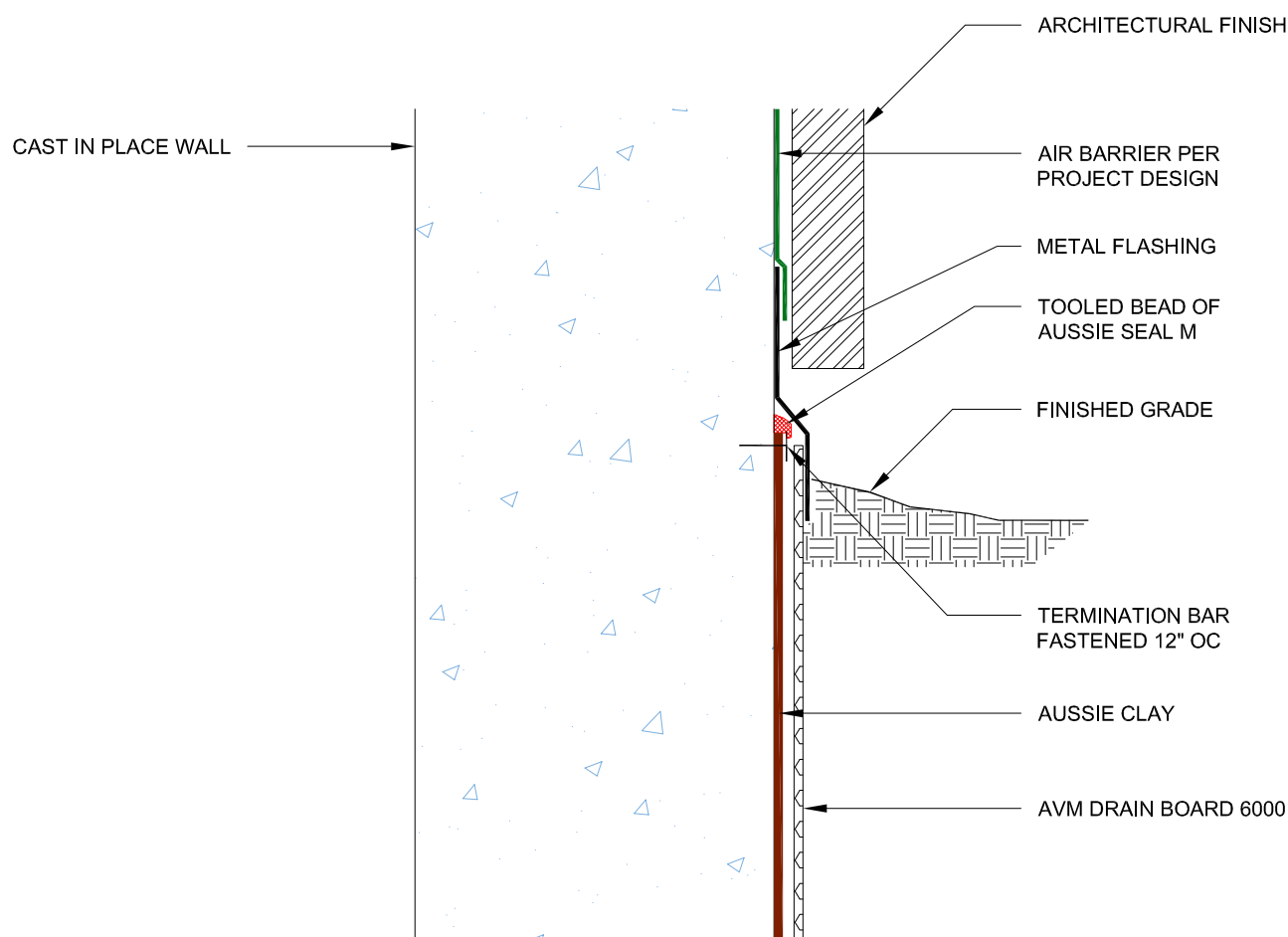
1. Aussie Clay & Aussie Clay PL are bentonite sheet membranes for waterproofing below-grade vertical and horizontal surfaces, including blind side and backfilled applications. Aussie Clay can be used with shotcrete or cast in place concrete in hydrostatic or non-hydrostatic conditions.
2. Fasten Aussie Clay with washer-head fasteners placed maximum 24" on center
3. Install Aussie Clay with gray geotextile against concrete. Install Aussie Clay PL with poly liner facing installer
4. Overlap sheet edges 4" and stagger seams min 12"

DETAIL #:
0590-0304

AVM System 590

Aussie Clay

Grade Termination Backfilled Wall Option 2 Non-Hydrostatic



Notes:

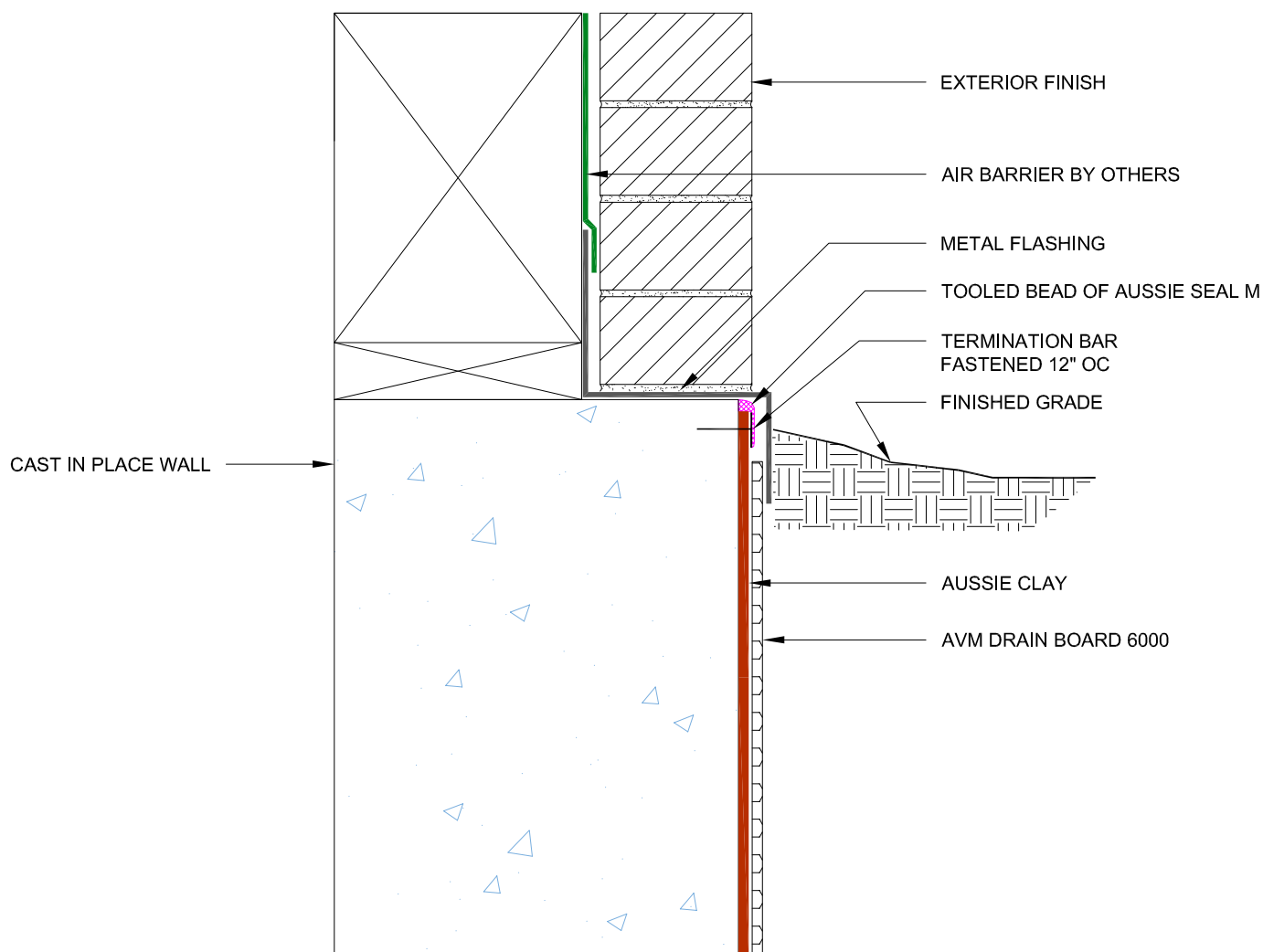
1. Aussie Clay & Aussie Clay PL are bentonite sheet membranes for waterproofing below-grade vertical and horizontal surfaces, including blind side and backfilled applications. Aussie Clay can be used with shotcrete or cast in place concrete in hydrostatic or non-hydrostatic conditions.
2. Fasten Aussie Clay with washer-head fasteners placed maximum 24" on center
3. Install Aussie Clay with gray geotextile against concrete. Install Aussie Clay PL with poly liner facing installer
4. Overlap sheet edges 4" and stagger seams min 12"

DETAIL #:
0590-0306

AVM System 590

Aussie Clay

Grade Termination Backfilled Wall Brick Ledge - Option 1 Non-Hydrostatic



Notes:

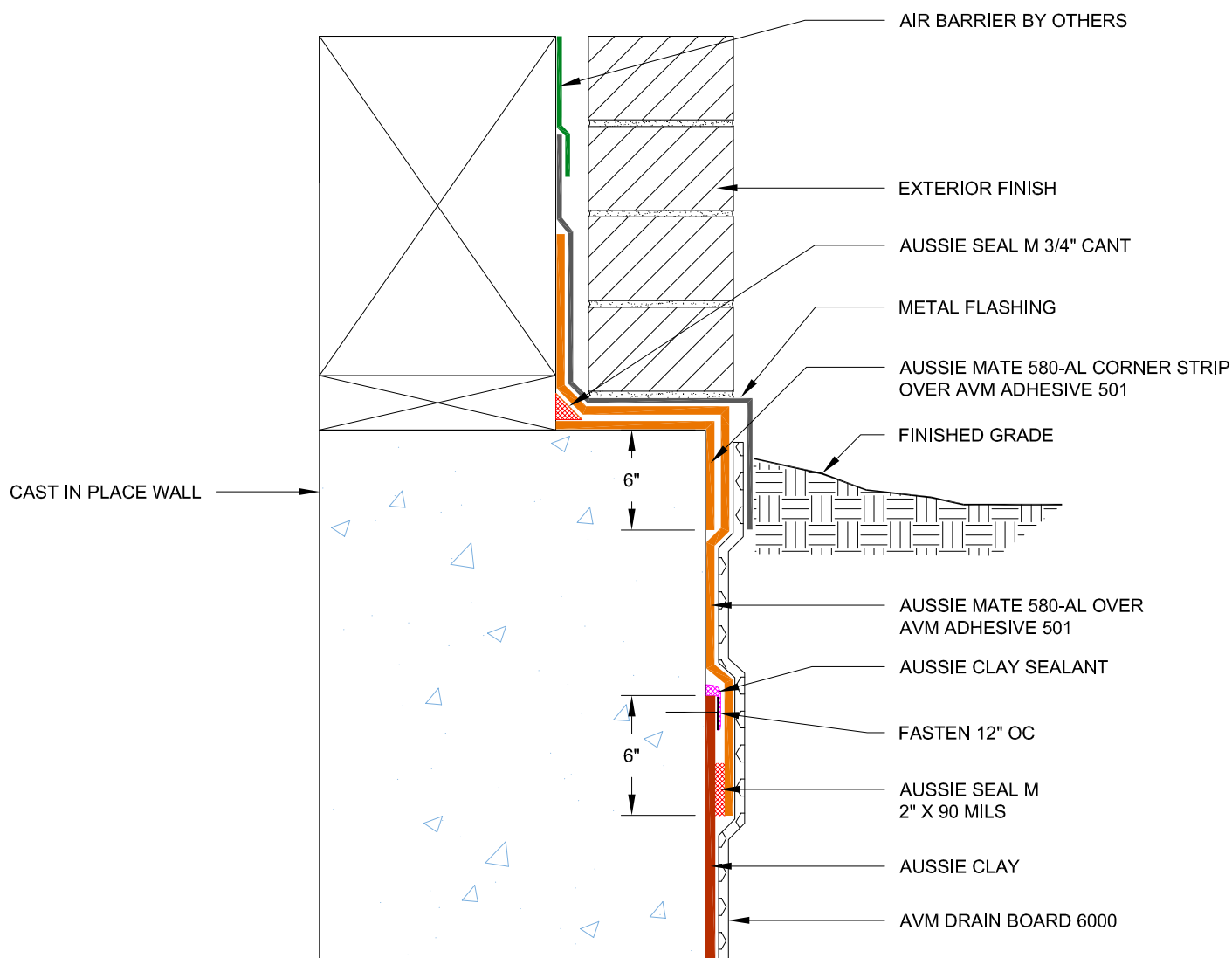
1. Aussie Clay & Aussie Clay PL are bentonite sheet membranes for waterproofing below-grade vertical and horizontal surfaces, including blind side and backfilled applications. Aussie Clay can be used with shotcrete or cast in place concrete in hydrostatic or non-hydrostatic conditions.
2. Fasten Aussie Clay with washer-head fasteners placed maximum 24" on center
3. Install Aussie Clay with gray geotextile against concrete. Install Aussie Clay PL with poly liner facing installer
4. Overlap sheet edges 4" and stagger seams min 12"

DETAIL #:
0590-0308

AVM System 590

Aussie Clay

Grade Termination Backfilled Wall Brick Ledge - Option 2 Non-Hydrostatic



Notes:

1. Aussie Clay & Aussie Clay PL are bentonite sheet membranes for waterproofing below-grade vertical and horizontal surfaces, including blind side and backfilled applications. Aussie Clay can be used with shotcrete or cast in place concrete in hydrostatic or non-hydrostatic conditions.
2. Fasten Aussie Clay with washer-head fasteners placed maximum 24" on center
3. Install Aussie Clay with gray geotextile against concrete. Install Aussie Clay PL with poly liner facing installer
4. Overlap sheet edges 4" and stagger seams min 12"