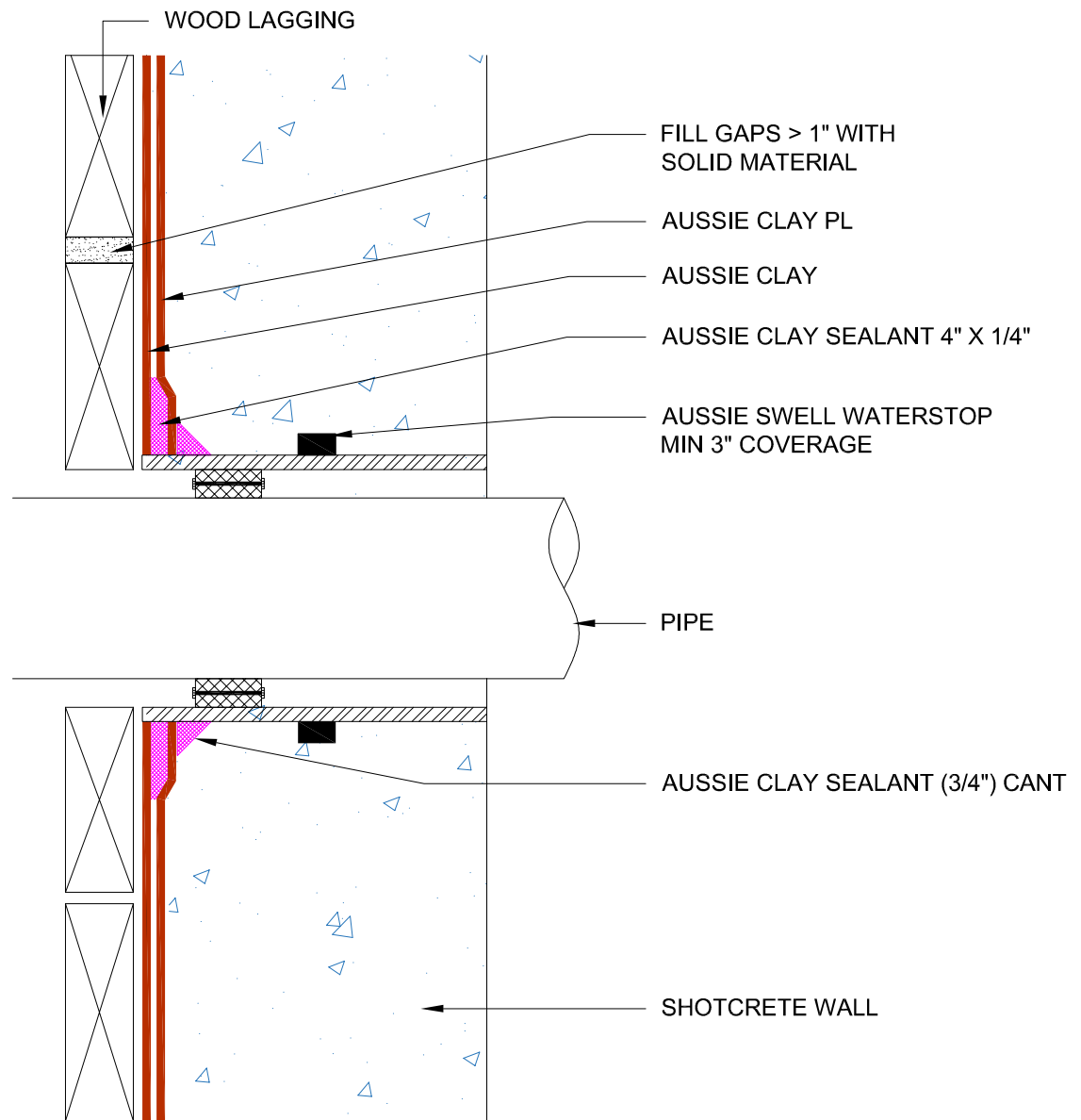


DETAIL #:  
0590-0208

AVM System 590

Aussie Clay

## Sleeved Pipe Penetration Shotcrete Walls



### Notes:

1. Aussie Clay & Aussie Clay PL are bentonite sheet membranes for waterproofing below-grade vertical and horizontal surfaces, including blindside and backfilled applications. Aussie Clay can be used with shotcrete or cast in place concrete in hydrostatic or non-hydrostatic conditions.
2. Install Aussie Clay and Aussie Clay PL with gray geotextile facing installer
3. All gaps around penetrations must be filled with solid material (grout or expanding spray foam)