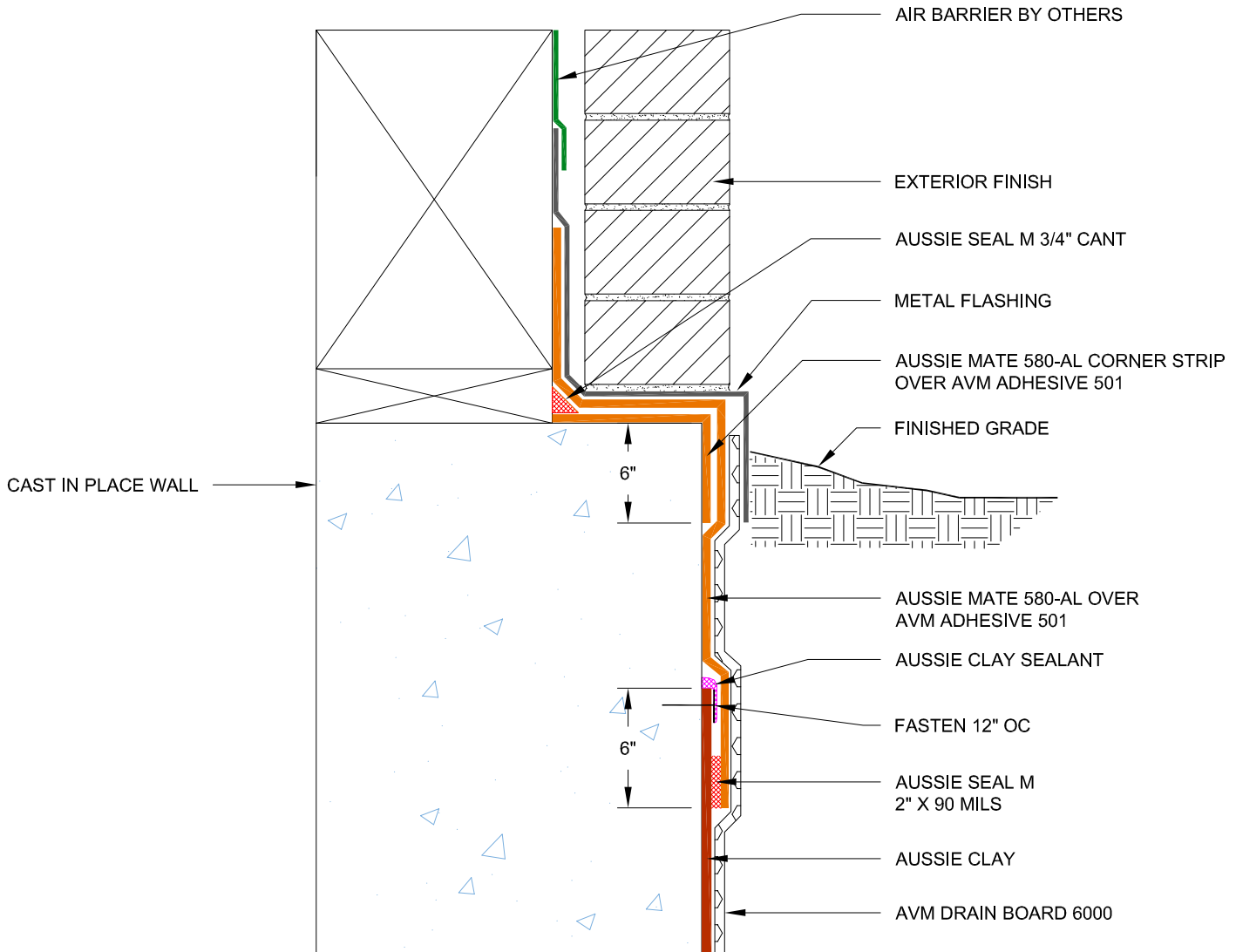


DETAIL #:  
0590-0308

AVM System 590

Aussie Clay

# Grade Termination Backfilled Wall Brick Ledge - Option 2 Non-Hydrostatic



### Notes:

1. Aussie Clay & Aussie Clay PL are bentonite sheet membranes for waterproofing below-grade vertical and horizontal surfaces, including blind side and backfilled applications. Aussie Clay can be used with shotcrete or cast in place concrete in hydrostatic or non-hydrostatic conditions.
2. Fasten Aussie Clay with washer-head fasteners placed maximum 24" on center
3. Install Aussie Clay with gray geotextile against concrete. Install Aussie Clay PL with poly liner facing installer
4. Overlap sheet edges 4" and stagger seams min 12"