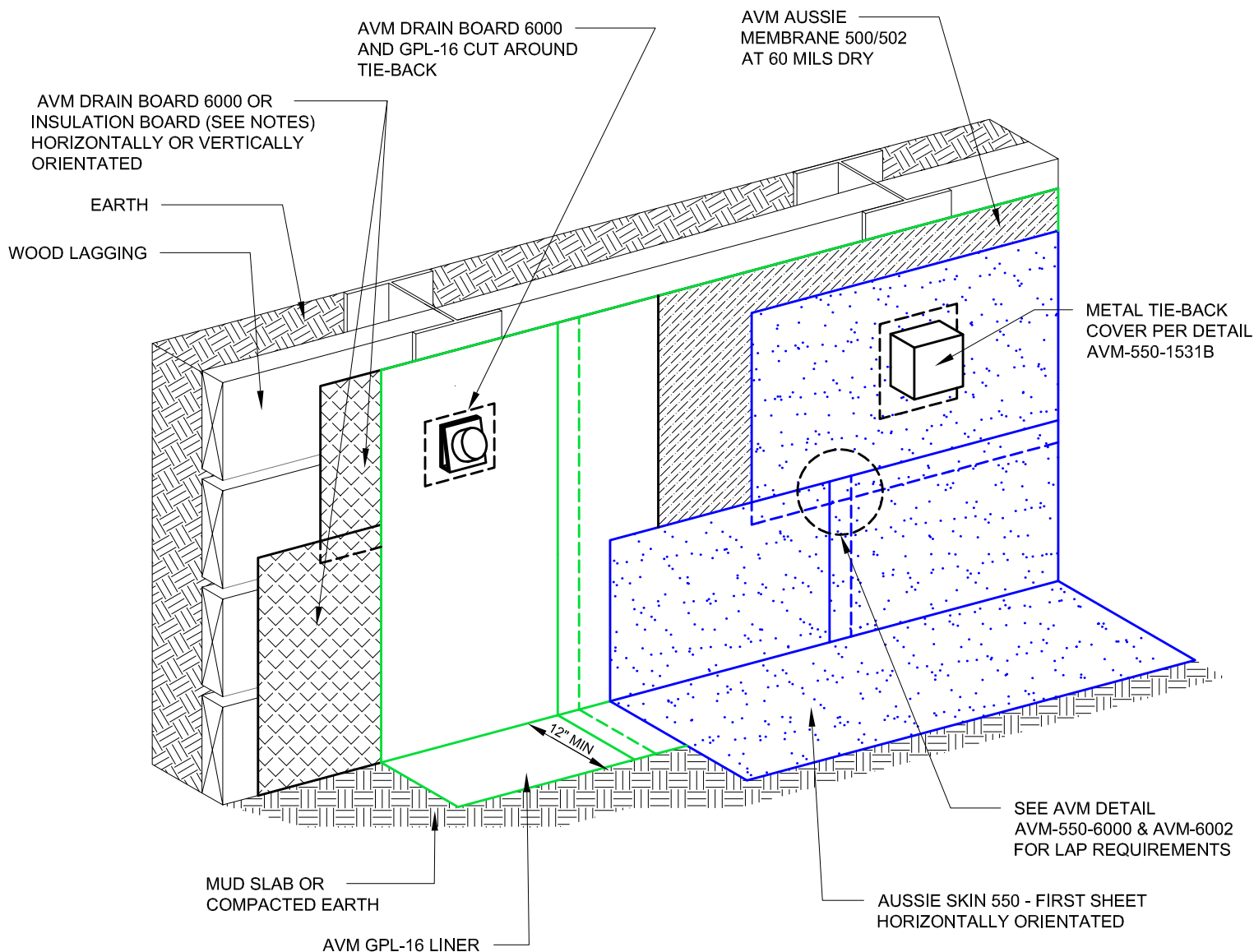


DETAIL #:  
0550-0001B  
AVM System 550  
Aussie Skin 550  
Dual System Patent Pending

## Typical Lagging Wall Dual System (Hydrostatic)



### Notes:

1. Aussie Skin 550 is a Heavy, Duty, Easy to Install, Puncture Resistant Sheet Waterproofing Membrane with added technologies creating excellent adhesion between the membrane and wet Concrete or Shot-Crete.
2. Contact AVM if no drain board or protection board is specified.
3. Remove/grind/repair as necessary any other protrusions, sharp edges, etc that may puncture or damage the membrane.
4. When using nails to hang the membrane, make sure all nails are flush with the membrane's surface or slightly sunken in below it. (Nails protruding above the membrane's surface may puncture the membrane)
5. All nails, screws etc used to hang the Aussie Skin above the water table must be non-rusting and sealed with Aussie Seal M.
6. Install the Aussie Membrane 500/502 (min 60 mils dry) over a polyolefin liner (Min 15 Mils thick)
7. Drain board must be connected to a permanent dewatering system if used in hydrostatic conditions.

AVM Industries, Inc.  
8245 Remmet Ave, Canoga Park, CA 91304

Quality Waterproofing Products

888.414.1041 818.888.0050  
www.avmindustries.com

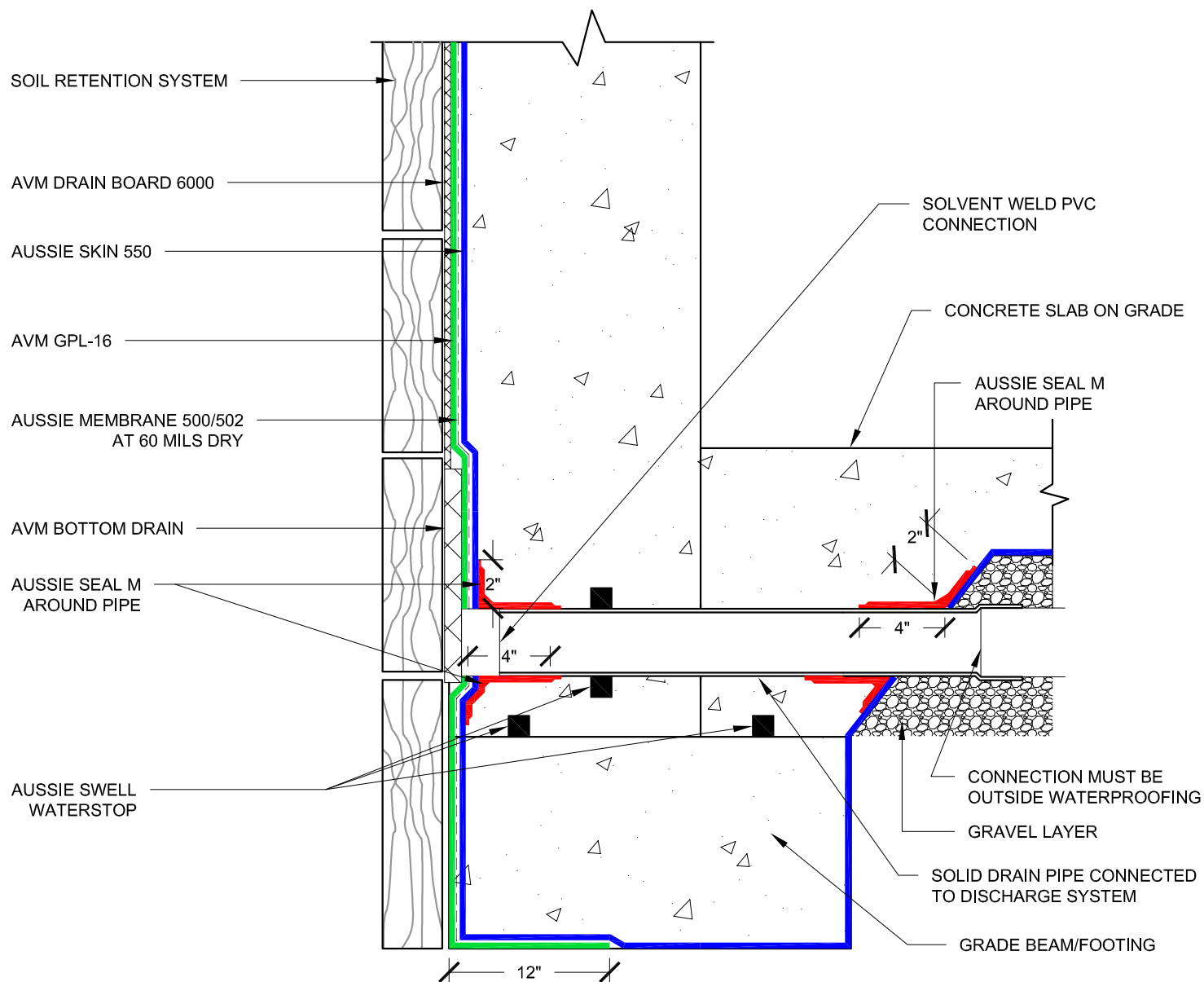
DETAIL #:  
0550-0101

AVM System 550

Aussie Skin 550

Dual System Patent Pending

## Raised Slab - Dual System



### Notes:

1. Aussie Skin 550 is a Heavy, Duty, Easy to Install, Puncture Resistant Sheet Waterproofing Membrane with added technologies creating excellent adhesion between the membrane and wet Concrete or Shot-Crete.

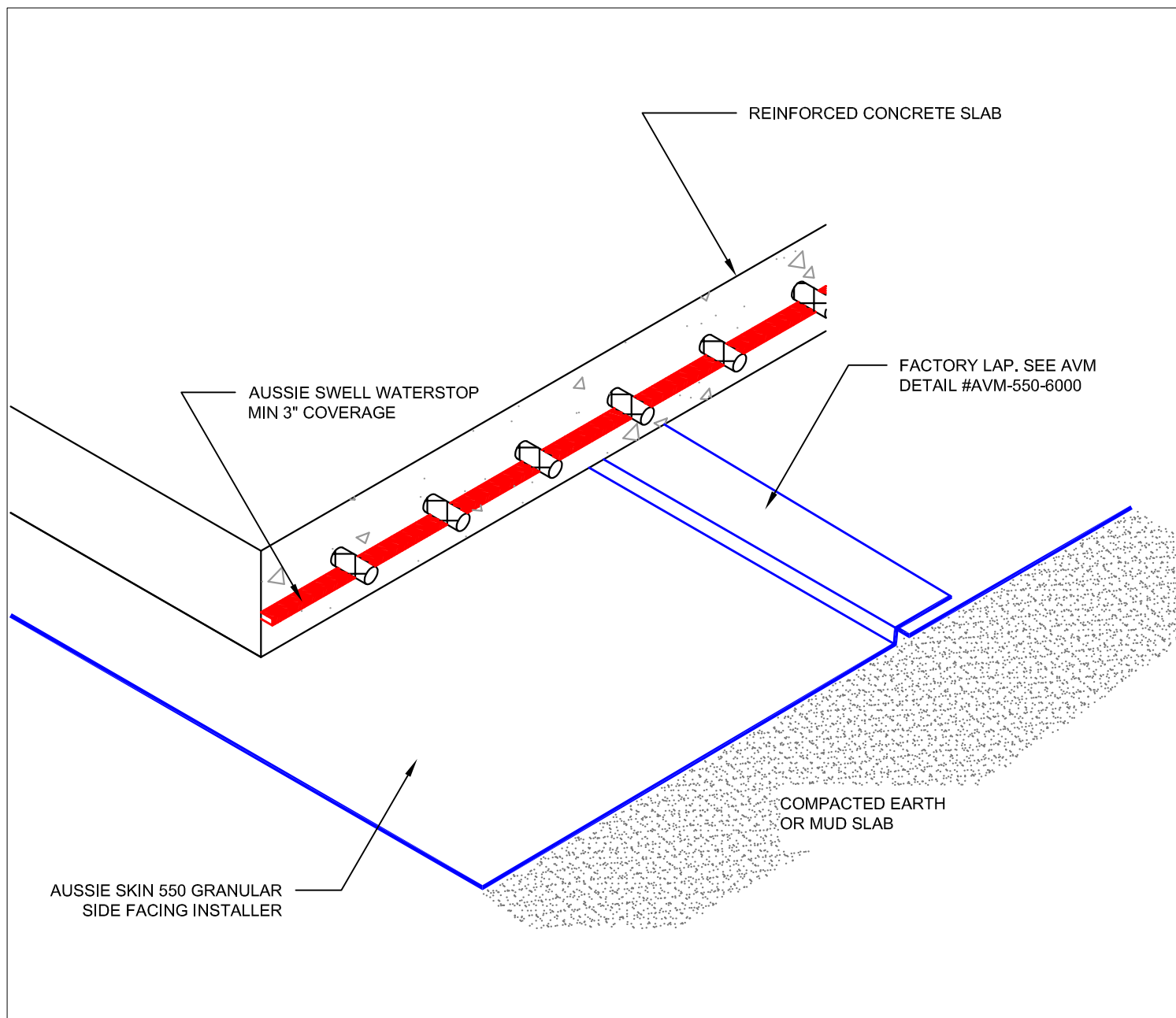
DETAIL #:

AVM-550-1500

AVM System 550

Aussie Skin 550

## Under Slab Assembly

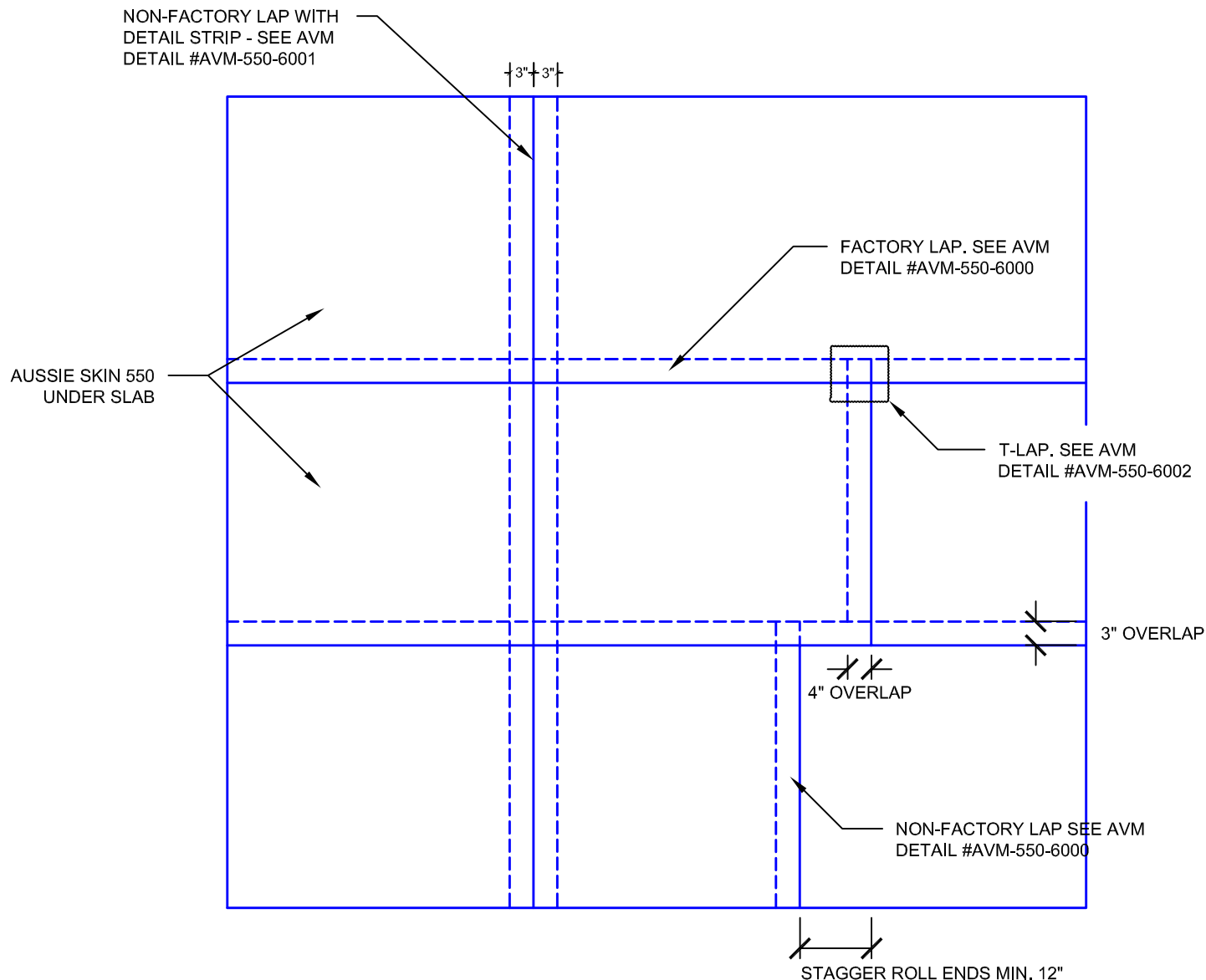


### Notes:

1. Aussie Skin 550 is a Heavy, Duty, Easy to Install, Puncture Resistant Sheet Waterproofing Membrane with added technologies creating excellent adhesion between the membrane and wet Concrete or Shot-Crete.
2. All surfaces must be clean and sound before installing the lap joints. (Remove excess sand before applying double sided tape)

DETAIL #:  
0550-1501  
AVM System 550  
Aussie Skin 550

## Standard Overlap Spacing



### Notes:

1. Aussie Skin 550 is a Heavy, Duty, Easy to Install, Puncture Resistant Sheet Waterproofing Membrane with added technologies creating excellent adhesion between the membrane and wet Concrete or Shot-Crete.
2. All surfaces must be clean and sound before installing the lap joints. (Remove excess sand before applying double sided tape)

DETAIL #:

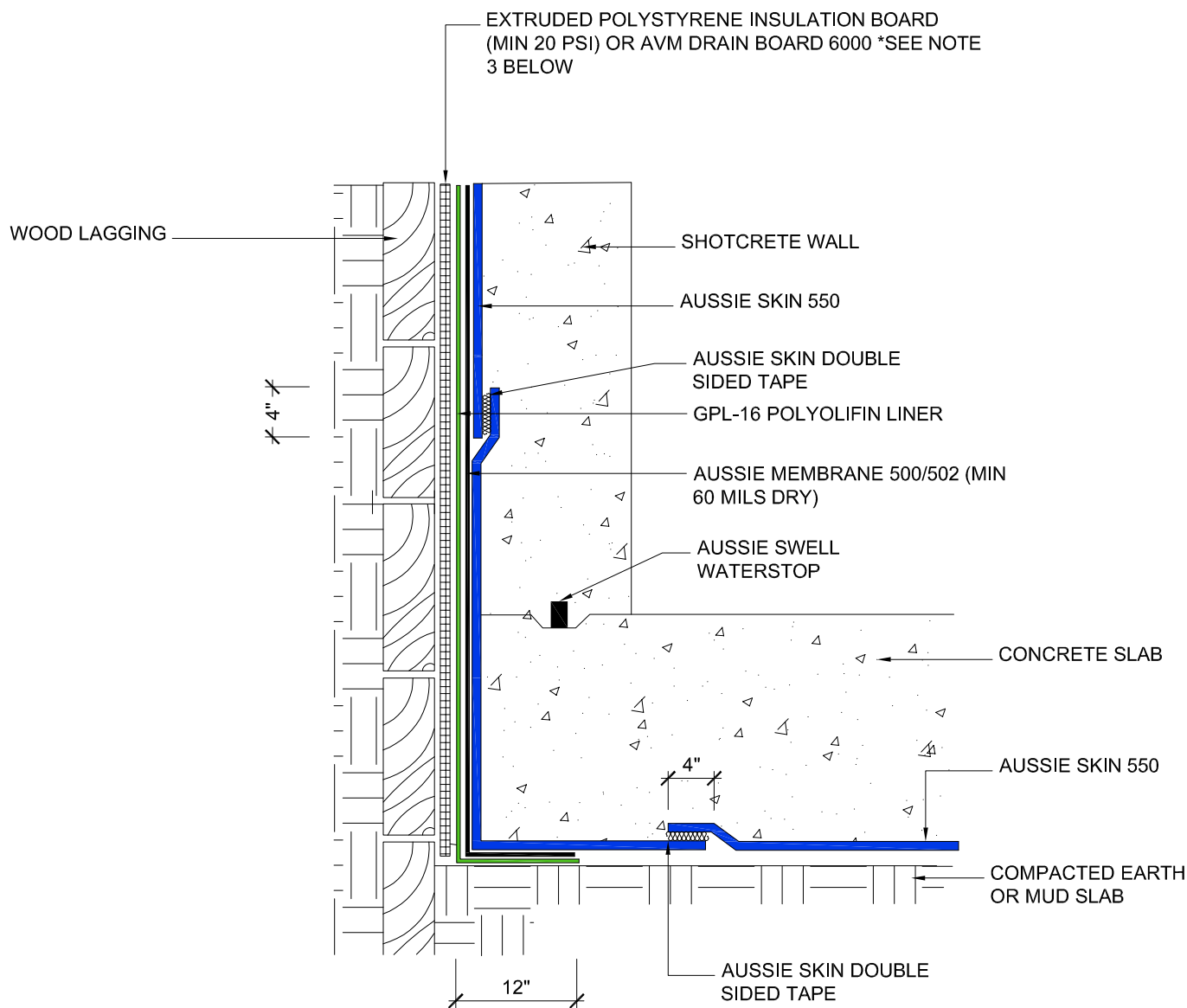
AVM-550-1520

AVM System 550

Aussie Skin 550

Dual System Patent Pending

## Blind Side Waterproofing over Lagging, Dual System (Hydrostatic)



### NOTES:

1. Aussie Skin 550 is a Heavy, Duty, Easy to Install, Puncture Resistant Sheet Waterproofing Membrane with added technologies creating excellent adhesion between the membrane and wet Concrete or Shot-Crete.
2. For proper membrane thickness and appropriate protection and drainage, refer to AVM System 500/502 Min Thickness Table.
3. Drain board must be connected to a permanent dewatering system if used in hydrostatic conditions.

### Installation Below Water Table / Hydrostatic Conditions

1. All nails, screws etc used to hang the Aussie Skin below the water table must be non-rusting and sealed with a 3"x3" patch of Aussie Skin 550 bonded with Aussie tape.
2. Contact AVM for appropriate water stop system to be used.
3. Below the water table, drain board may be substituted with approved protection layer.

AVM Industries, Inc.  
8245 Remmet Ave, Canoga Park, CA 91304

Quality Waterproofing Products

888.414.1041 818.888.0050  
www.avmindustries.com

FILE NAME: 0550-1520

Protected by Copyright - AVM Industries, Inc. Revision Date 1/28/2019



DETAIL #:

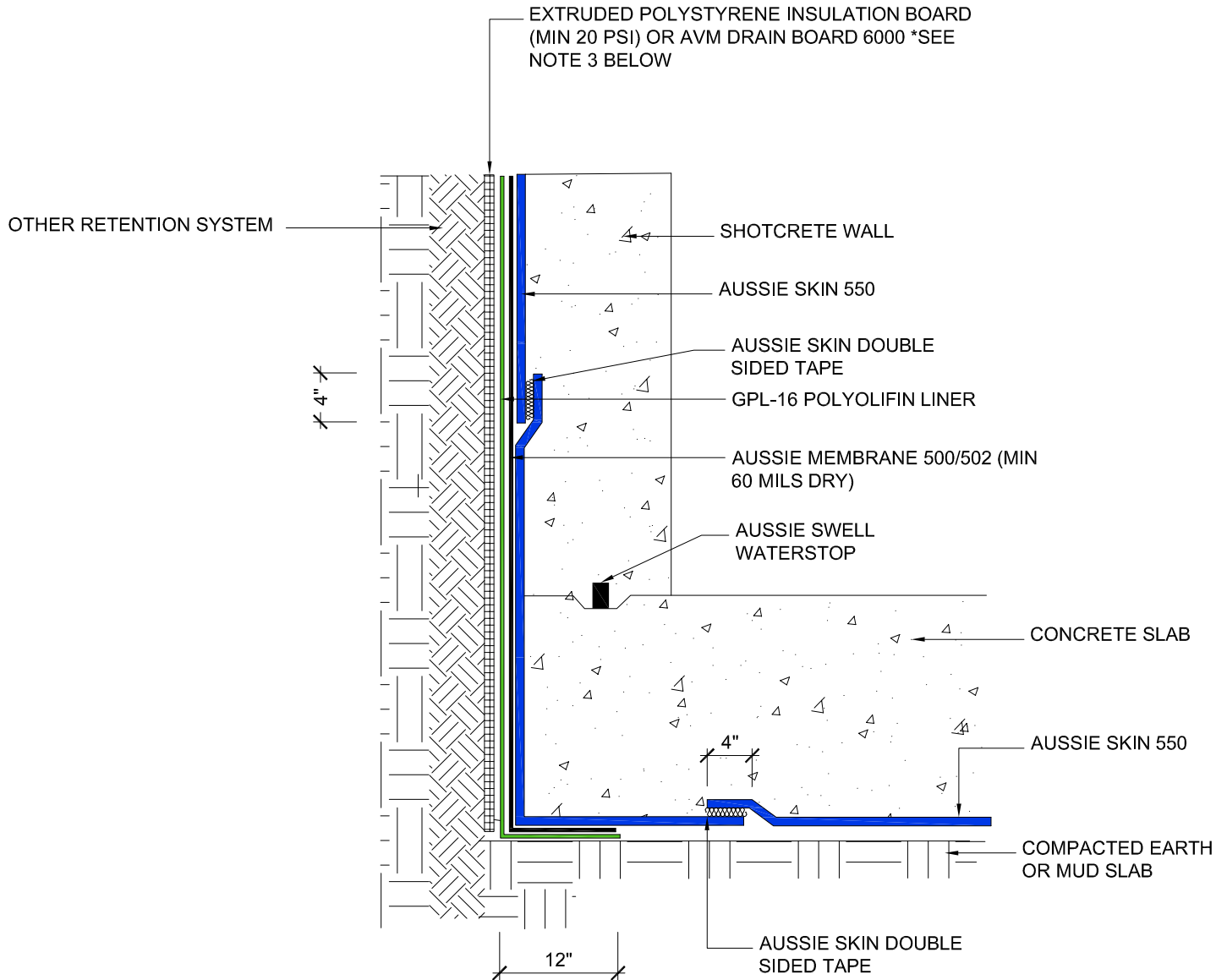
AVM-550-1522

AVM System 550

Aussie Skin 550

Dual System Patent Pending

Blind Side Waterproofing over Soil  
Retention System (other), Dual System  
(Below Water Table)



NOTES:

1. Aussie Skin 550 is a Heavy, Duty, Easy to Install, Puncture Resistant Sheet Waterproofing Membrane with added technologies creating excellent adhesion between the membrane and wet Concrete or Shot-Crete.
2. For proper membrane thickness and appropriate protection and drainage, refer to AVM System 500/502 Min Thickness Table.
3. Drain board must be connected to a permanent dewatering system if used in hydrostatic conditions.

**Installation Below Water Table / Hydrostatic Conditions**

1. All nails, screws etc used to hang the Aussie Skin below the water table must be non-rusting and sealed with a 3"x3" patch of Aussie Skin 550 bonded with Aussie tape.
2. Contact AVM for appropriate water stop system to be used.
3. Below the water table, drain board may be substituted with approved protection layer.

AVM Industries, Inc.  
8245 Remmet Ave, Canoga Park, CA 91304

Quality Waterproofing Products

888.414.1041 818.888.0050  
www.avmindustries.com

FILE NAME: 0550-1522

Protected by Copyright - AVM Industries, Inc. Revision Date 1/28/2019

DETAIL #:

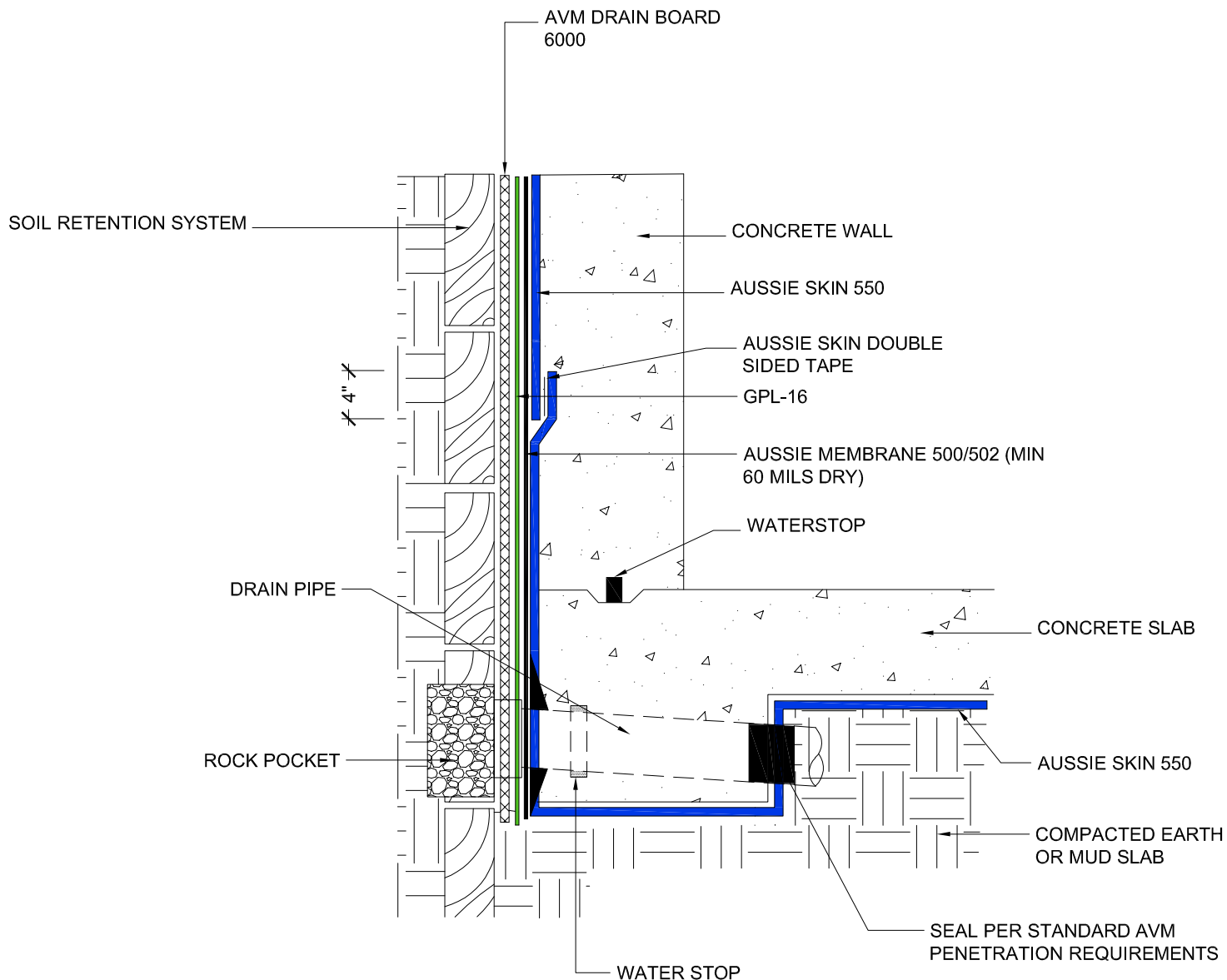
AVM-550-1525

AVM System 550

Aussie Skin 550

Dual System Patent Pending

## Blind Side Waterproofing over Lagging, Rock Pocket Detail



### NOTES:

1. Aussie Skin 550 is a Heavy, Duty, Easy to Install, Puncture Resistant Sheet Waterproofing Membrane with added technologies creating excellent adhesion between the membrane and wet Concrete or Shot-Crete.
2. For proper membrane thickness and appropriate protection and drainage, refer to AVM System 500/502 Min Thickness Table.
3. Contact AVM if no drain board or protection board is specified.

### Below Water Table Installations

1. For Aussie Skin Installations below the water table contact AVM to verify ALL details!
2. All nails, screws etc used to hang the Aussie Skin below the water table must be non-rusting and sealed with a 3"x3" patch of Aussie Skin 550 bonded with Aussie tape.
3. Contact AVM for appropriate water stop system to be used.
4. Reinforce the Aussie Membrane with AVM Mat 800 at all joints, transitions, penetrations, etc.

AVM Industries, Inc.  
8245 Remmet Ave, Canoga Park, CA 91304

Quality Waterproofing Products

888.414.1041 818.888.0050  
www.avmindustries.com

FILE NAME: 0550-1525

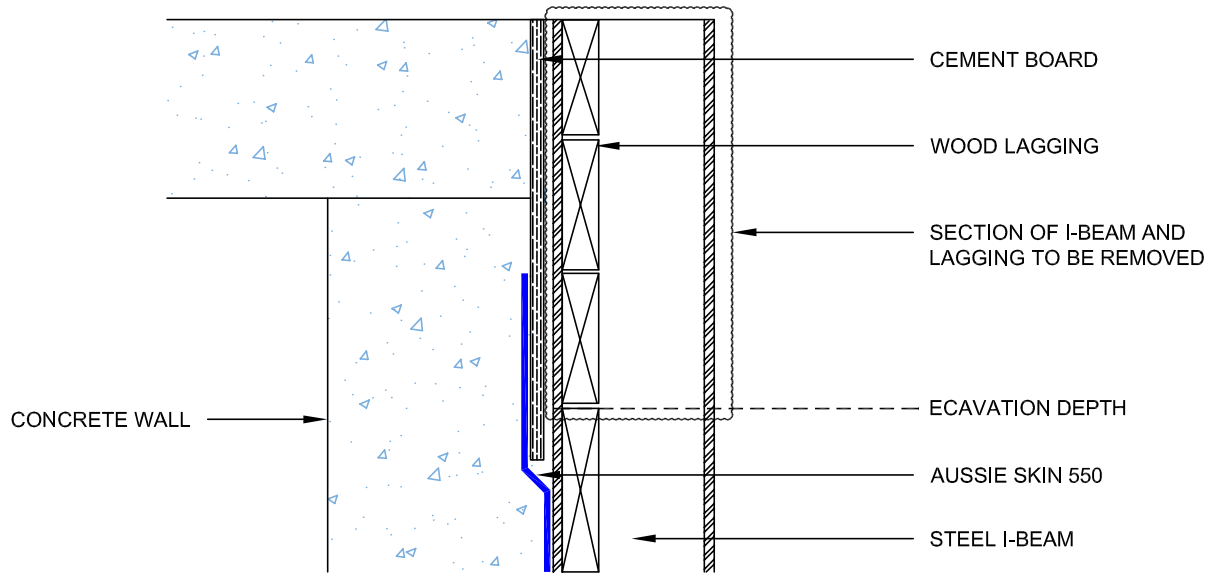
Protected by Copyright - AVM Industries, Inc. Revision Date 3/10/2017



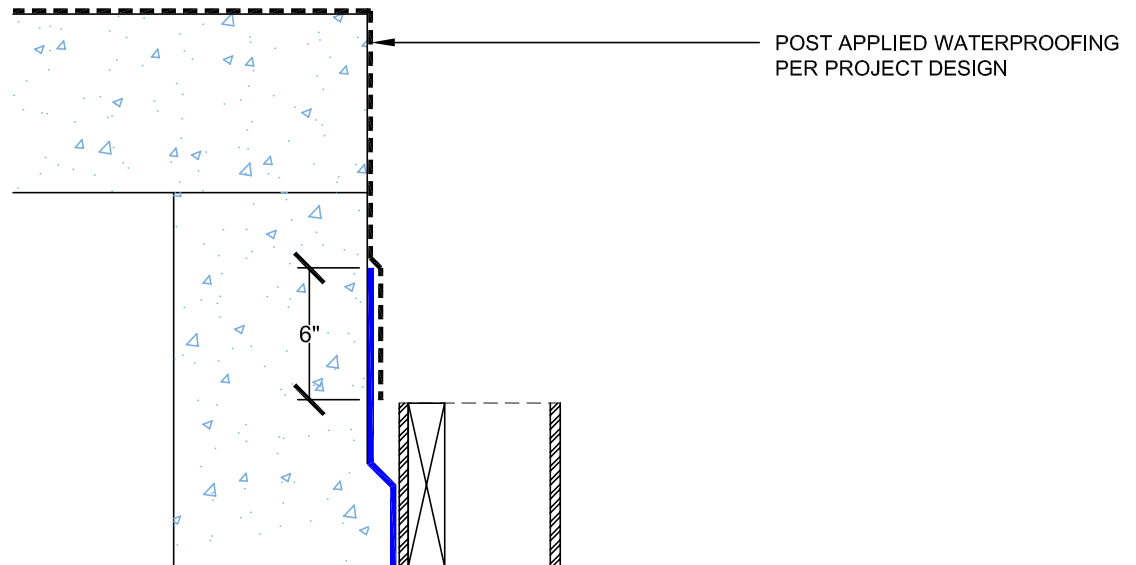
## Lagging Board Removal at Grade



### STEP 1



### STEP 2



#### Notes:

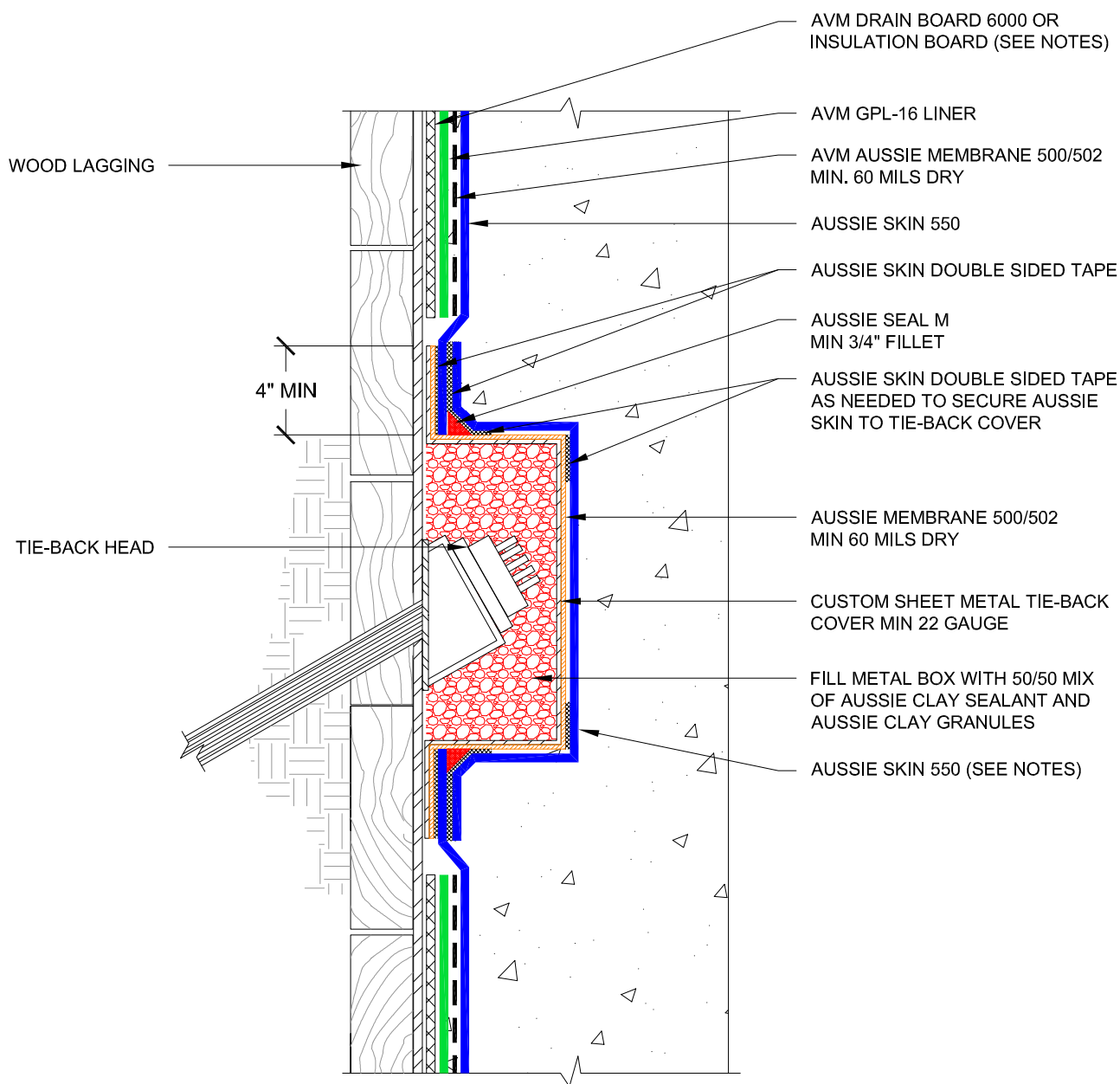
1. Aussie Skin 550 is a Heavy, Duty, Easy to Install, Puncture Resistant Sheet Waterproofing Membrane with added technologies creating excellent adhesion between the membrane and wet Concrete or Shot-Crete.

DETAIL #:  
AVM-550-1530B

Aussie Skin 550

Dual System Patent Pending

# Metal Tie-Back Cover Dual Layer System



## Notes:

1. Aussie Skin 550 is a Heavy, Duty, Easy to Install, Puncture Resistant Sheet Waterproofing Membrane with added technologies creating excellent adhesion between the membrane and wet Concrete or Shot-Crete.
2. Contact AVM if no drain board or protection board is specified.
3. Relief cuts may be needed to form Aussie Skin around tie-back cover. All relief cuts should be covered with Sanded Tape.
4. All nails, screws etc used to hang the Aussie Skin above the water table must be non-rusting and sealed with AVM approved Sealant.
5. Drain board must be connected to a permanent dewatering system if used in hydrostatic conditions

AVM Industries, Inc.  
8245 Remmet Ave, Canoga Park, CA 91304

Quality Waterproofing Products

888.414.1041 818.888.0050  
www.avmindustries.com

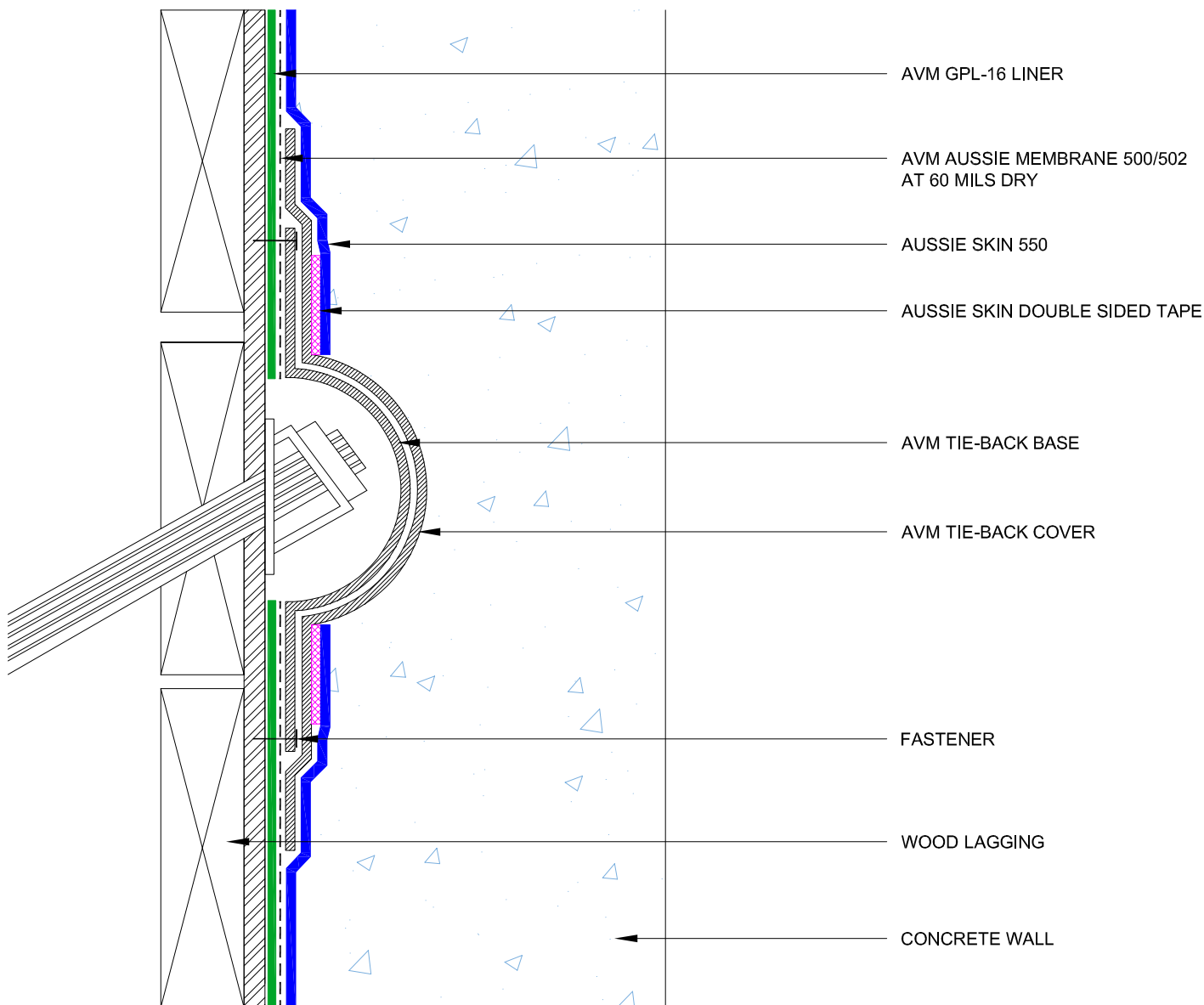
FILE NAME: 0550-1530B

Protected by Copyright - AVM Industries, Inc. Revision Date 3/7/2019



DETAIL #:  
0550-1532B  
AVM System 550  
Aussie Skin 550

## Tie-Back Cover Dual System

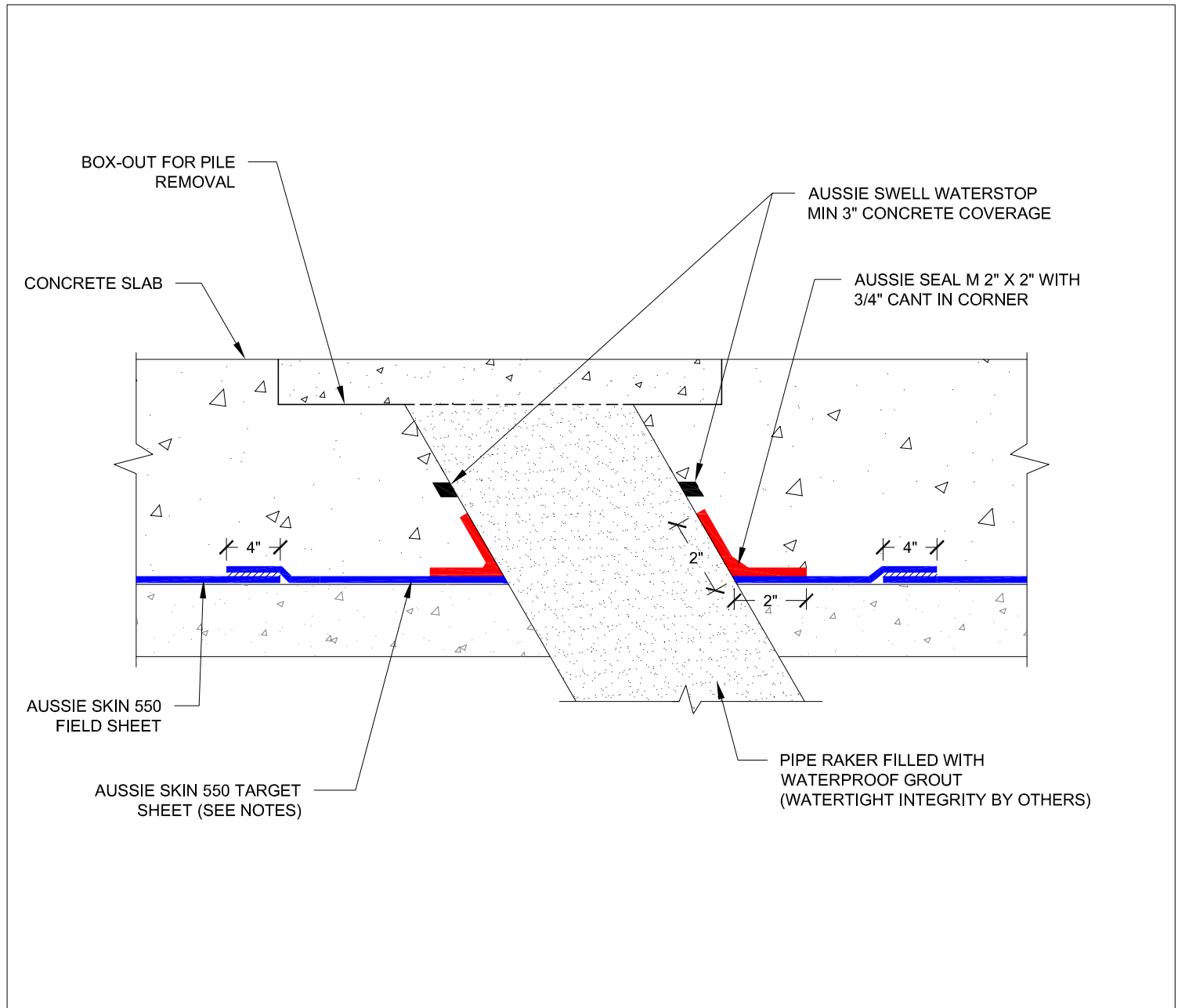


### Notes:

1. Aussie Skin 550 is a Heavy, Duty, Easy to Install, Puncture Resistant Sheet Waterproofing Membrane with added technologies creating excellent adhesion between the membrane and wet Concrete or Shot-Crete.

DETAIL #:  
**AVM-550-1535**  
Aussie Skin 550

## Pipe Raker Detail Aussie Skin 550



### Notes:

1. Aussie Skin 550 is a Heavy, Duty, Easy to Install, Puncture Resistant Sheet Waterproofing Membrane with added technologies creating excellent adhesion between the membrane and wet Concrete or Shot-Crete.
2. Steel must be clean and rust free prior to applying Aussie Seal M.
3. Aussie Skin target sheet only necessary if field sheet is not cut tightly around pipe.



DETAIL #:

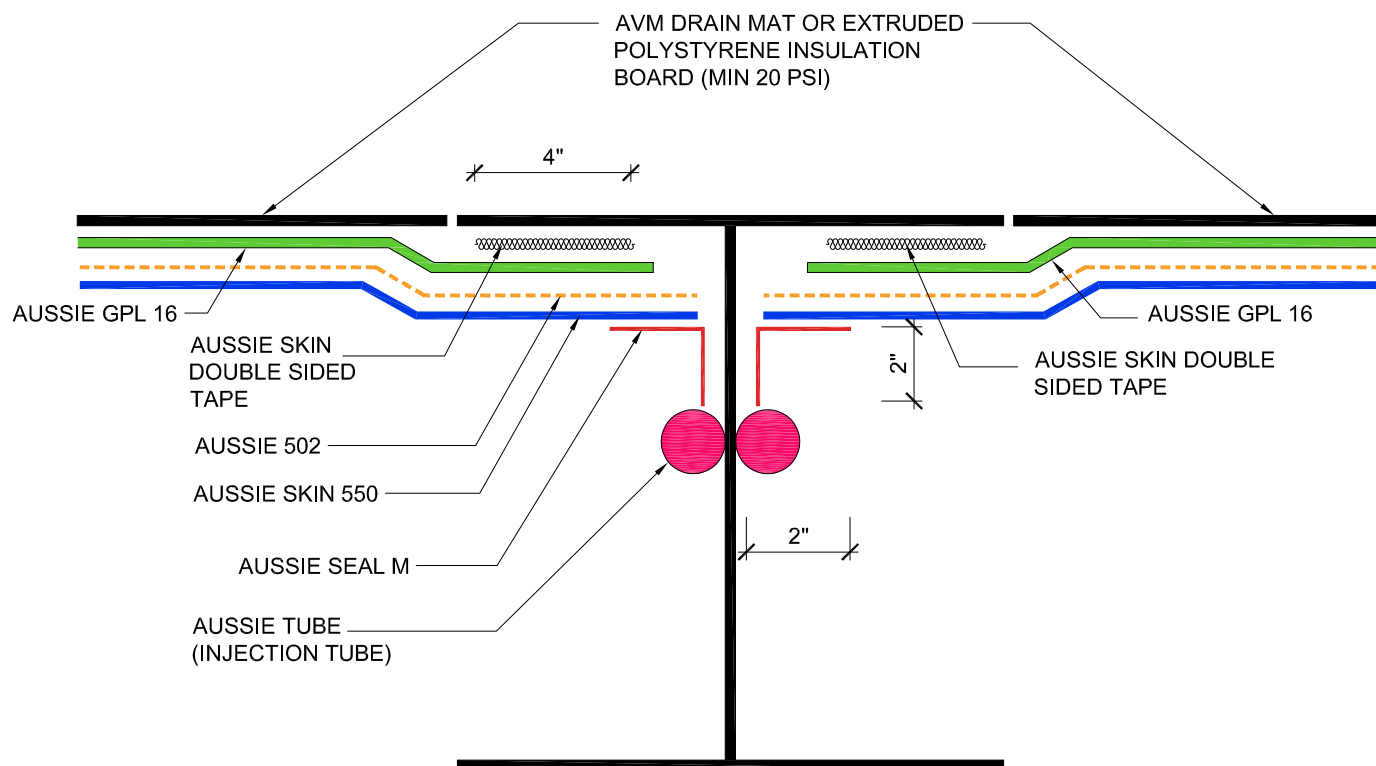
AVM-550-1544

AVM System 550

Aussie Skin 550

Dual System Patent Pending

## Back Lagged Detail Dual Layer System



### NOTES:

1. Aussie Skin 550 is a Heavy, Duty, Easy to Install, Puncture Resistant Sheet Waterproofing Membrane with added technologies creating excellent adhesion between the membrane and wet Concrete or Shot-Crete.
2. Contact AVM if no drain board or protection board is specified.
3. All nails, screws etc used to hang the Aussie Skin above the water table must be non/rusting and sealed with Aussie Seal M.

### **Below Water Table Installations**

1. All nails, screws etc used to hang the Aussie Skin below the water table must be non-rusting and sealed with a 3"x3" patch of Aussie Skin 550 bonded with Aussie double sided tape 550.
2. Contact AVM for appropriate water stop system to be used.
3. Below the water table, drain board may be substituted with approved protection layer

AVM Industries, Inc.  
8245 Remmet Ave, Canoga Park, CA 91304

Quality Waterproofing Products

888.414.1041 818.888.0050  
www.avmindustries.com

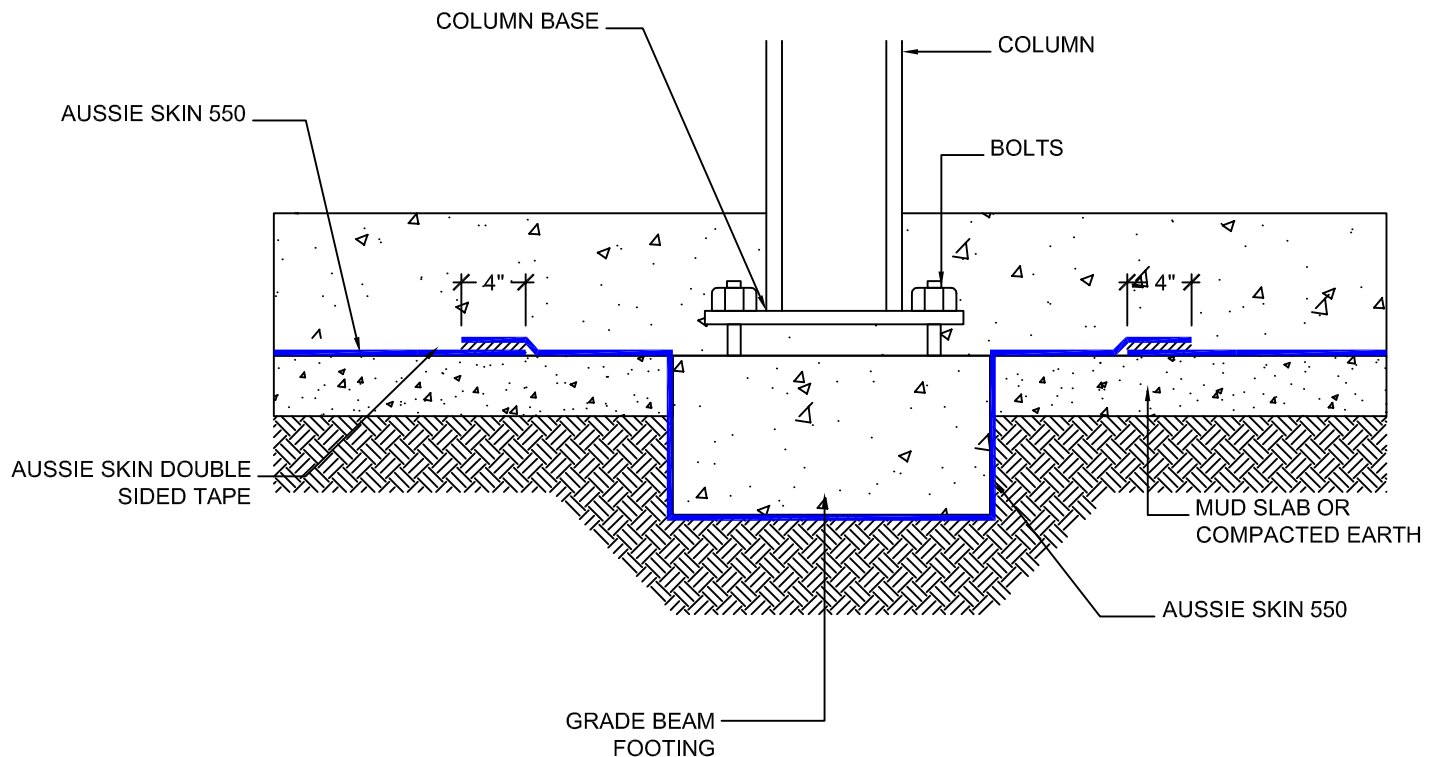
FILE NAME: 0550-1544

Protected by Copyright - AVM Industries, Inc. Revision Date 1/14/2019

DETAIL #:  
**AVM-550-2500**

AVM System 550  
**Aussie Skin 550**

## Aussie Skin Under Grade-Beam - Hydrostatic



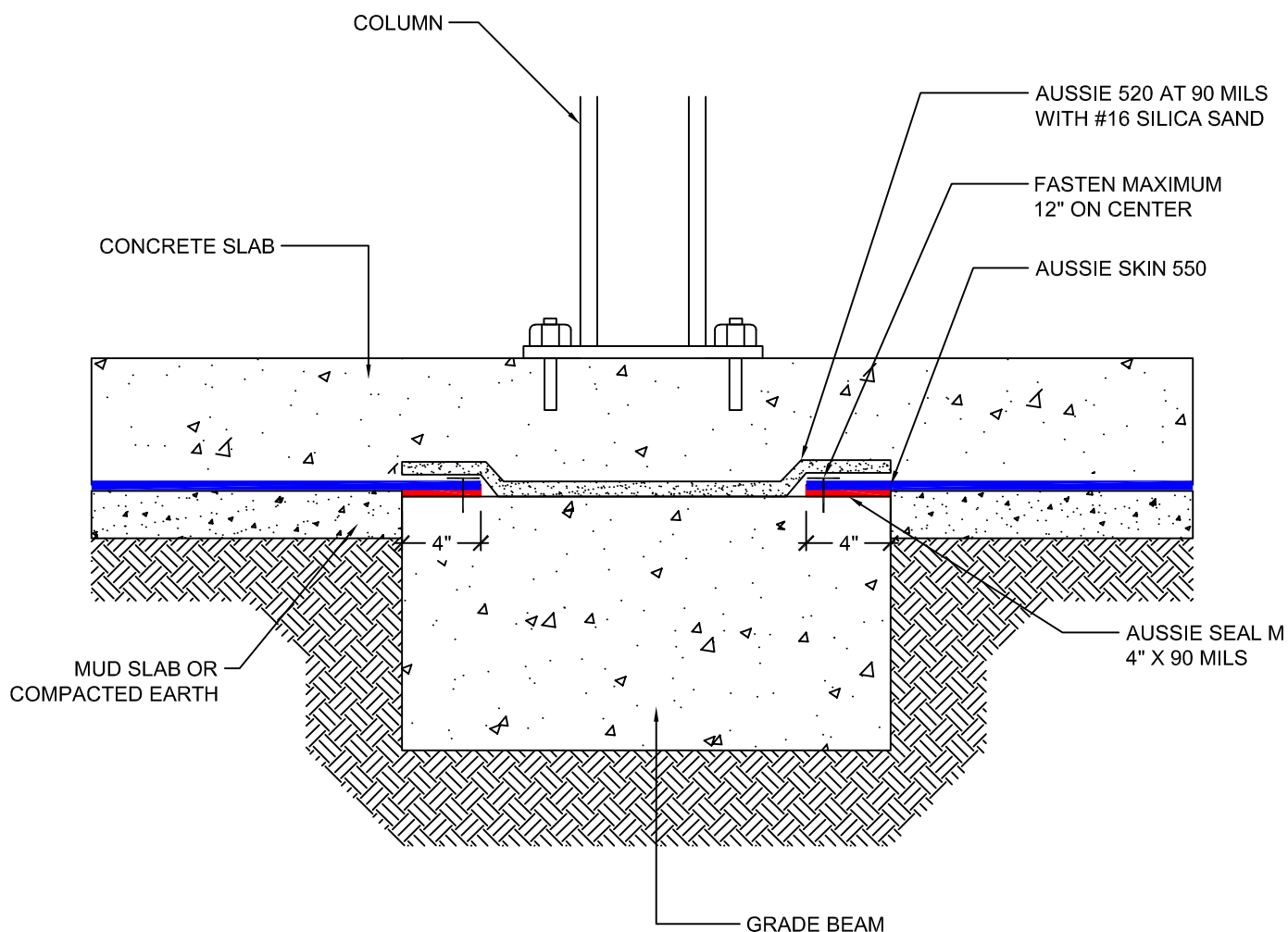
### NOTES:

1. Aussie Skin 550 is a Heavy, Duty, Easy to Install, Puncture Resistant Sheet Waterproofing Membrane with added technologies creating excellent adhesion between the membrane and wet Concrete or Shot-Crete.



DETAIL #:  
**AVM-550-2540**  
AVM System 550  
**Aussie Skin 550**

## Aussie Skin Over Grade-Beam - Hydrostatic



### NOTES:

1. Aussie Skin 550 is a Heavy, Duty, Easy to Install, Puncture Resistant Sheet Waterproofing Membrane with added technologies creating excellent adhesion between the membrane and wet Concrete or Shot-Crete.
2. Concrete must cure min 7 days.
3. Aussie Membrane 520 must cure 24 hours prior to concrete placement.

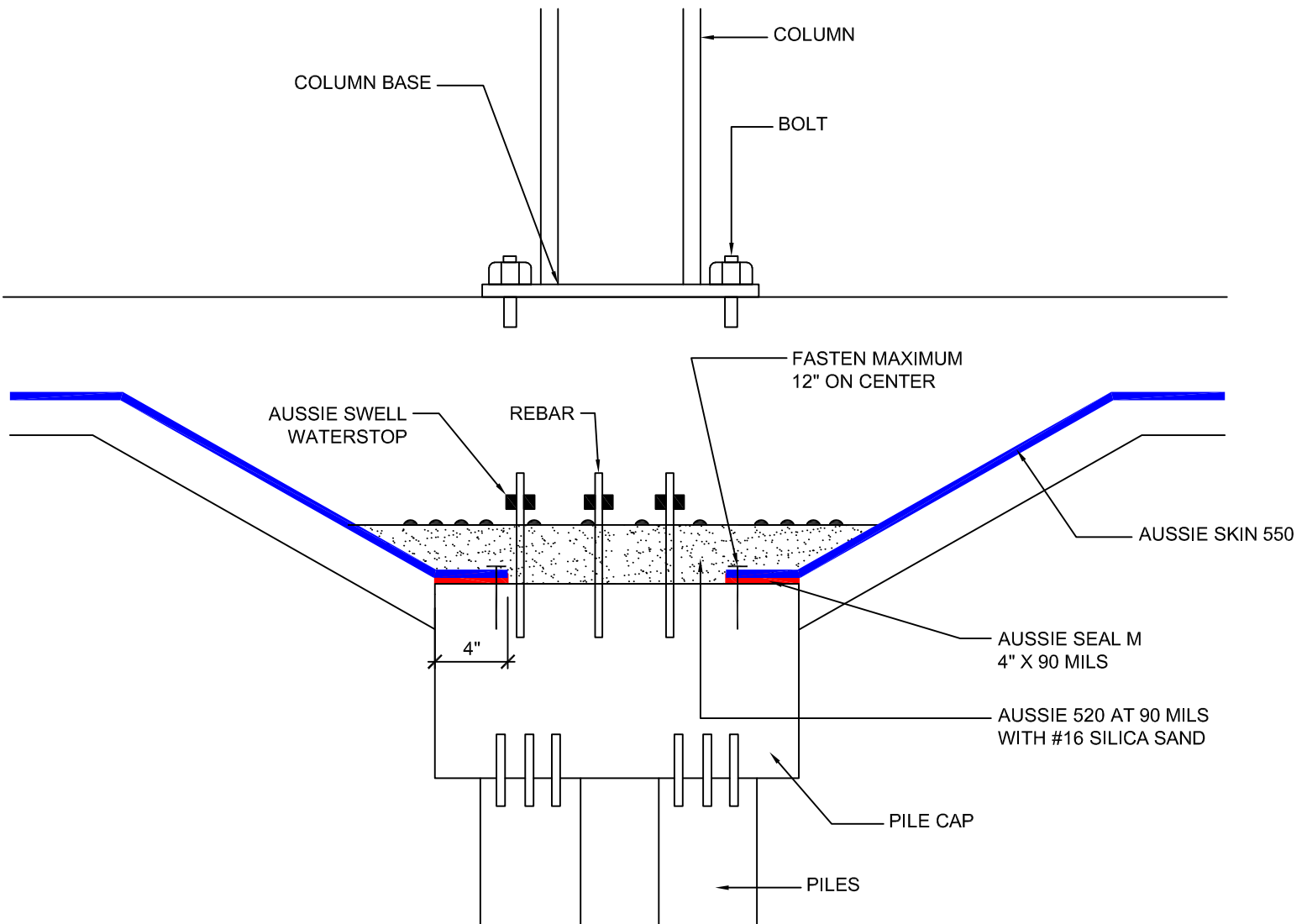
DETAIL #:

AVM-550-2610

AVM System 550

Aussie Skin 550

## Pile Cap Detail - Hydrostatic



### NOTES:

1. Aussie Skin 550 is a Heavy, Duty, Easy to Install, Puncture Resistant Sheet Waterproofing Membrane with added technologies creating excellent adhesion between the membrane and wet Concrete or Shot-Crete.
2. Concrete Surface must be free of dirt, debris, release agents and anything else that might inhibit bonding.
3. Concrete surface must be structurally sound, uniform and finished with a light broom finish.
4. Aussie Membrane 520 must cure 24 hours prior to concrete placement.

AVM Industries, Inc.  
8245 Remmet Ave, Canoga Park, CA 91304

Quality Waterproofing Products

888.414.1041 818.888.0050  
www.avmindustries.com

FILE NAME: 0550-2610

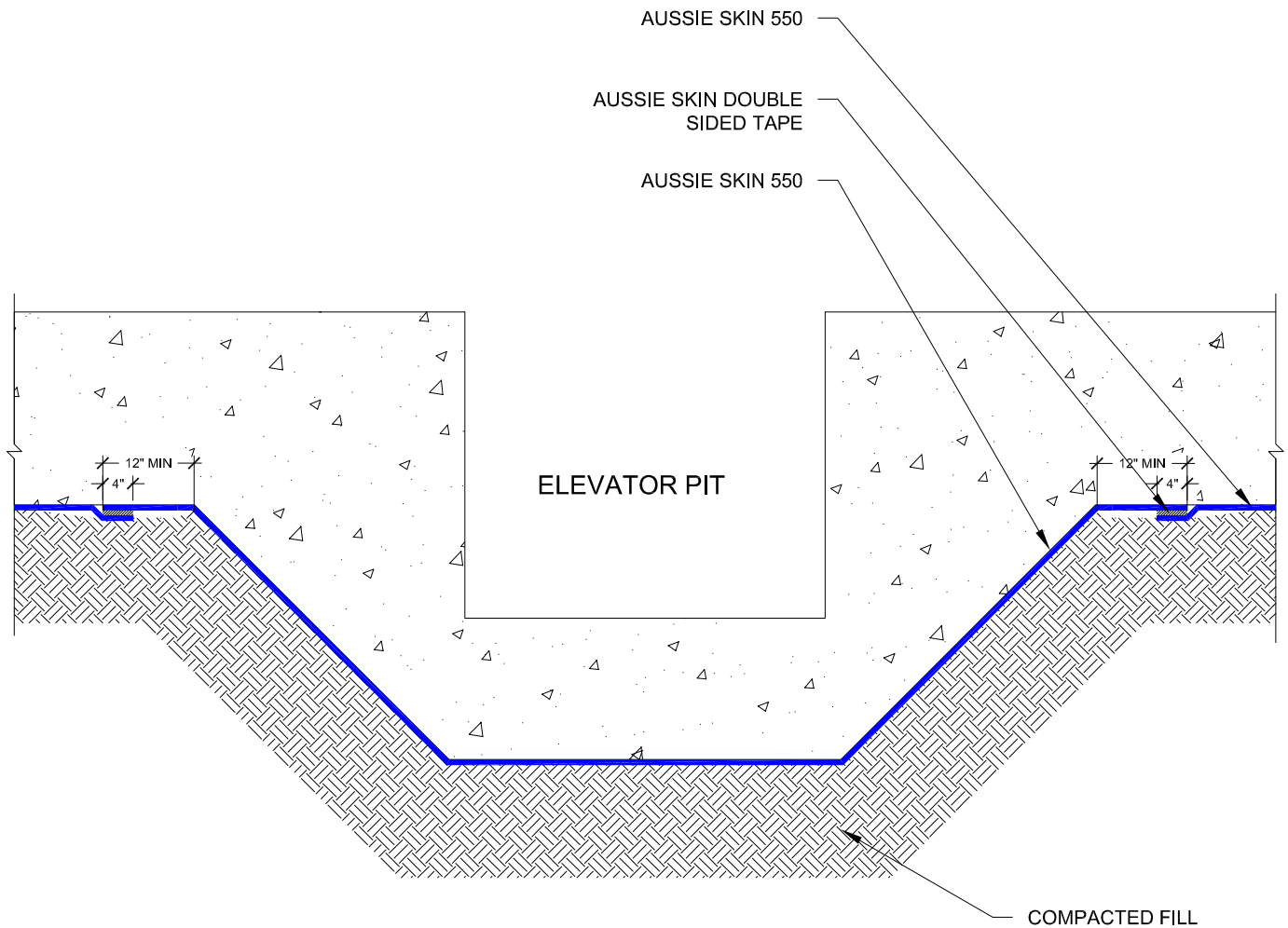
Protected by Copyright - AVM Industries, Inc. Revision Date 1/30/2019

DETAIL #:

**AVM-550-3000**

Aussie Skin 560

## Elevator Pit Over Aussie Skin

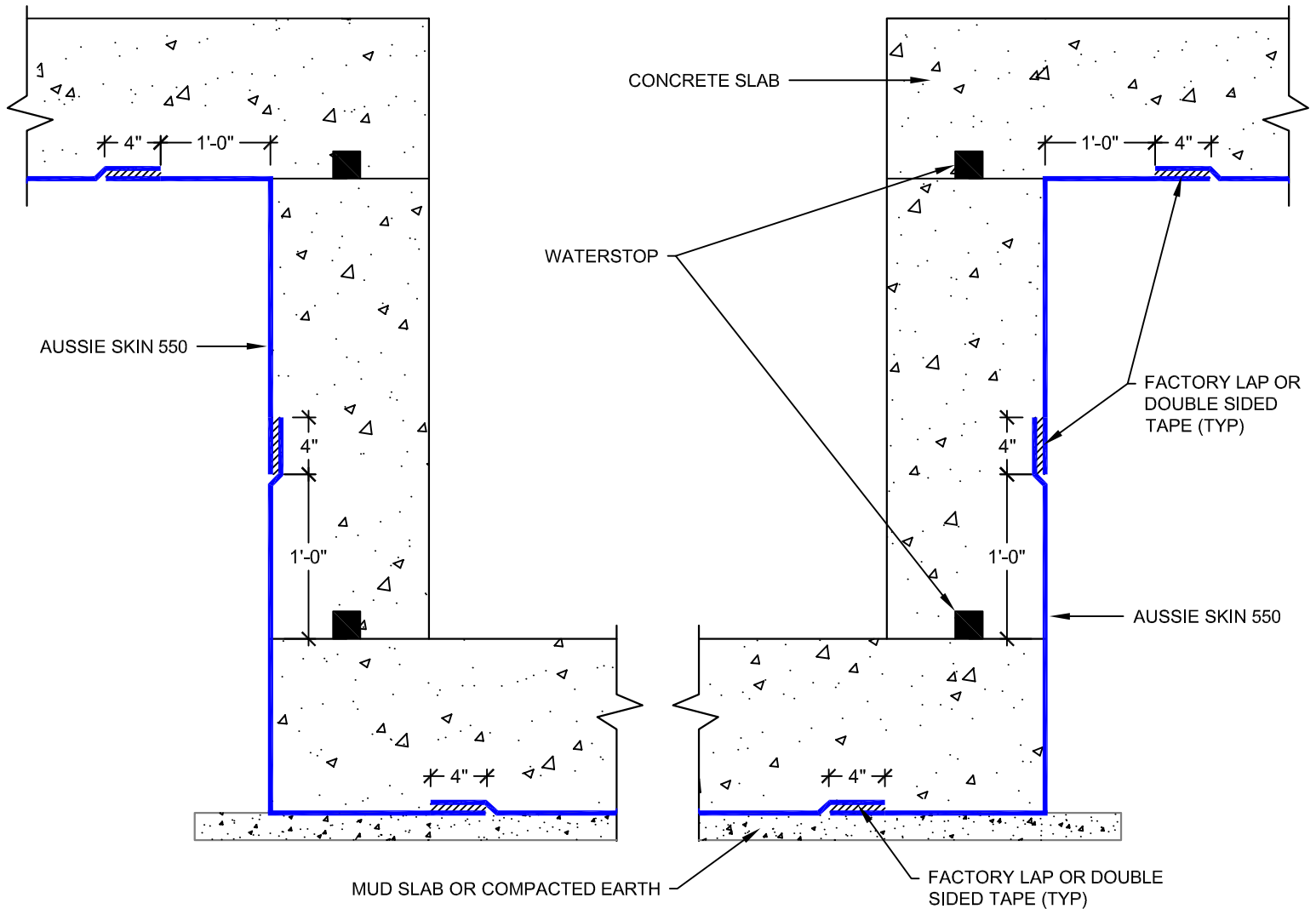


### NOTES:

1. Aussie Skin 550 is a Heavy, Duty, Easy to Install, Puncture Resistant Sheet Waterproofing Membrane with added technologies creating excellent adhesion between the membrane and wet Concrete or Shot-Crete.
2. Contact AVM if no drain board or protection board is specified.
3. All nails, screws etc used to hang the Aussie Skin above the water table must be non-rusting and sealed with AVM approved Sealant.

DETAIL #:  
**AVM-550-3000A**  
AVM System 550  
**Aussie Skin 550**

## Elevator Pit Over Aussie Skin Single System



### NOTES:

1. Aussie Skin 550 is a Heavy, Duty, Easy to Install, Puncture Resistant Sheet Waterproofing Membrane with added technologies creating excellent adhesion between the membrane and wet Concrete or Shot-Crete.
2. Contact AVM if no drain board or protection board is specified.

### Below Water Table Installations

101 For Aussie Skin installations below the water table, contact AVM to verify ALL details

AVM Industries, Inc.  
8245 Remmet Ave, Canoga Park, CA 91304

Quality Waterproofing Products

888.414.1041 818.888.0050  
www.avmindustries.com

FILE NAME: 0550-3000A

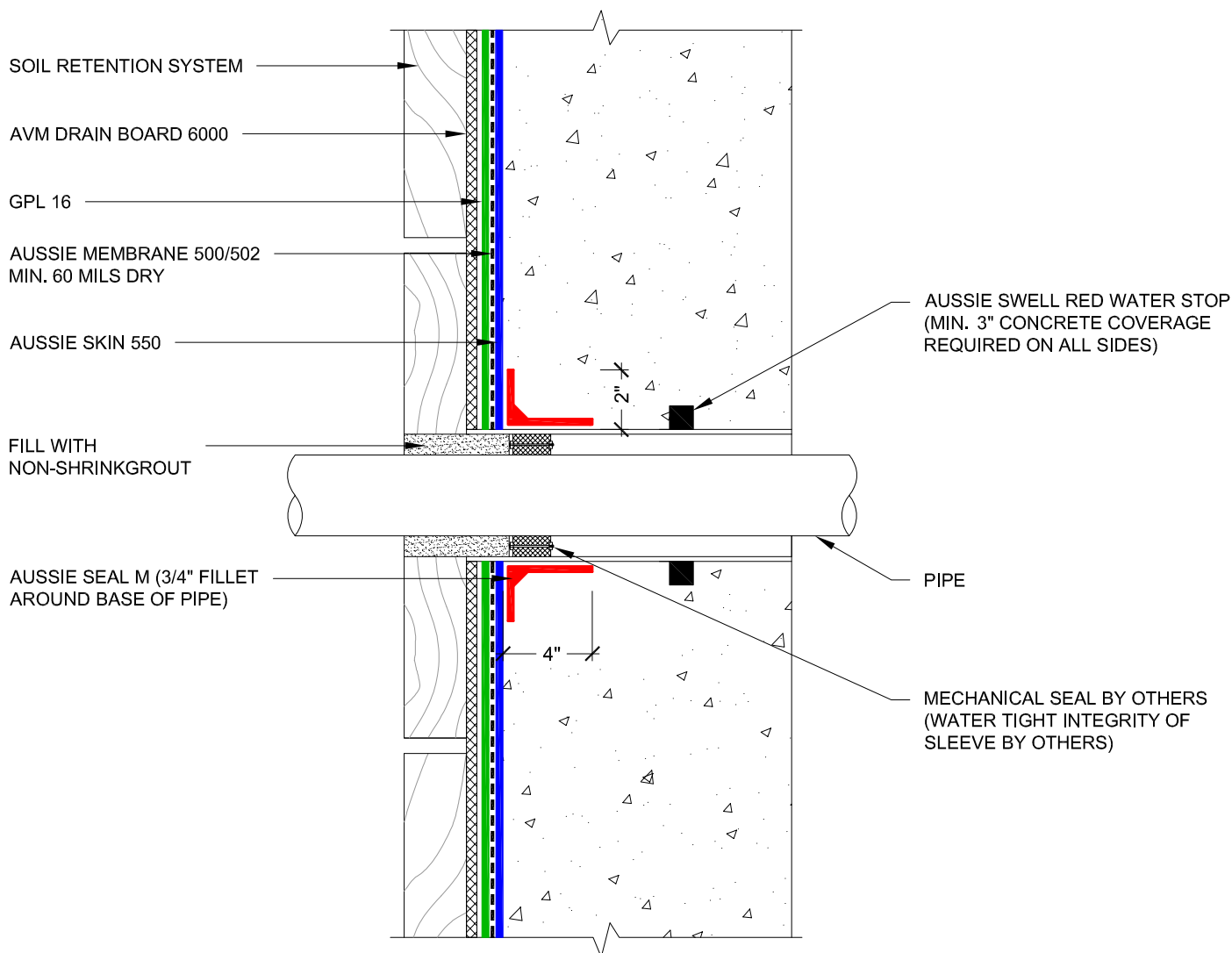
Protected by Copyright - AVM Industries, Inc. Revision Date 12/03/2018

DETAIL #:  
**AVM-550-4005B**

AVM System 550  
**Aussie Skin 550**

Dual System Patent Pending

## Sleeved Pipe Penetration Dual System



### NOTES:

1. Aussie Skin 550 is a Heavy, Duty, Easy to Install, Puncture Resistant Sheet Waterproofing Membrane with added technologies creating excellent adhesion between the membrane and wet Concrete or Shot-Crete.
2. For proper membrane thickness and appropriate protection and drainage, refer to AVM System 500/502 Min Thickness Table.
3. PVC or metal pipe must be clean and free of foreign matter that would prevent Aussie Seal M adhesion.
4. Contact AVM if no drain board or protection board is specified.
5. Drain board must be connected to a permanent dewatering system if used in hydrostatic conditions.
6. All nails, screws etc used to hang the Aussie Skin below the water table must be non-rusting and sealed with a 3"x3" patch of Aussie Skin 550 bonded with Aussie Skin double sided tape.

AVM Industries, Inc.  
8245 Remmet Ave, Canoga Park, CA 91304

Quality Waterproofing Products

888.414.1041 818.888.0050  
www.avmindustries.com

FILE NAME: 0550-4005B

Protected by Copyright - AVM Industries, Inc. Revision Date 12/03/2018

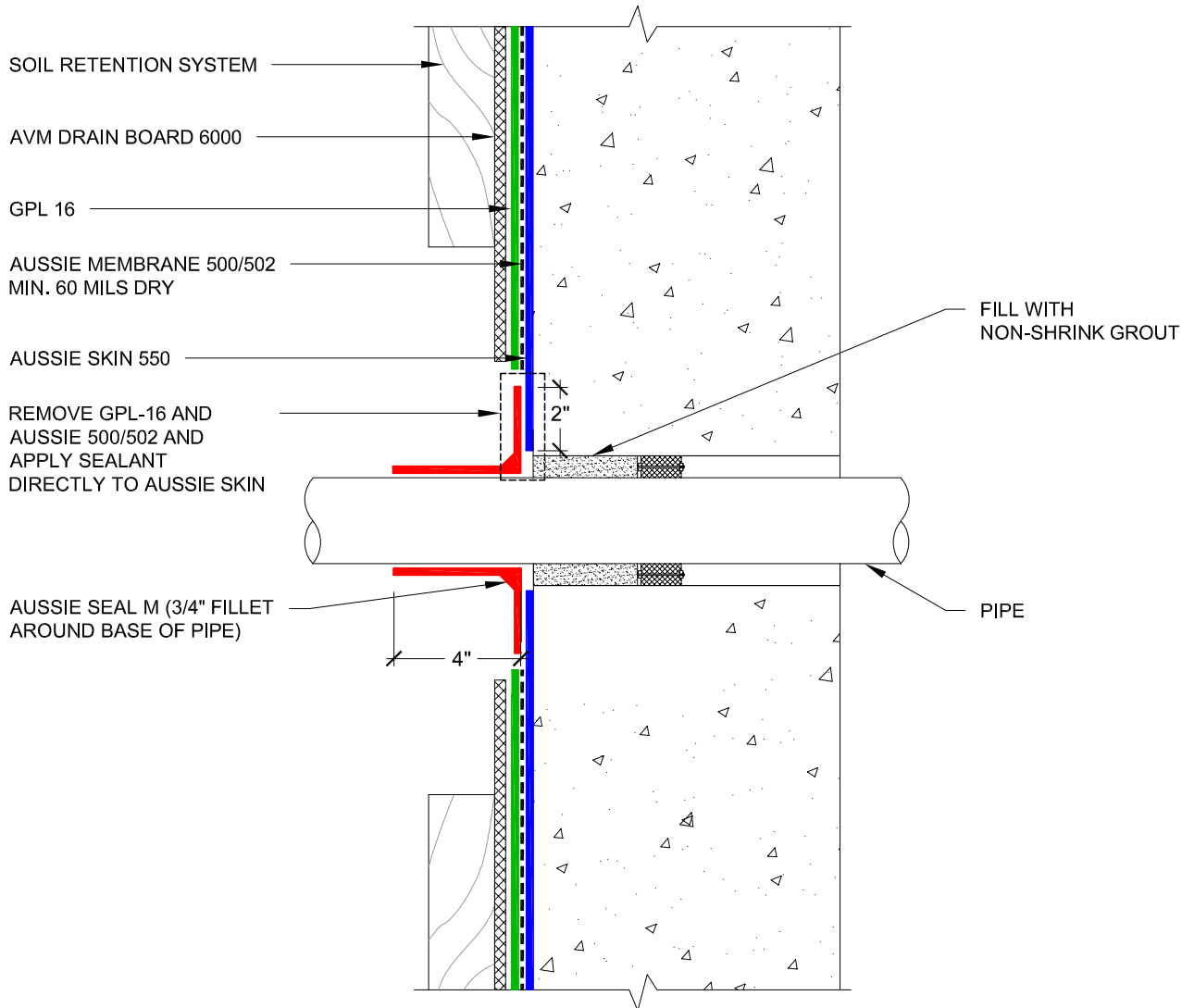
DETAIL #:  
**AVM-550-4010B**

AVM System 550  
**Aussie Skin 550**

## Pipe Penetration Sealant on HDPE Side Dual System



Dual System Patent Pending



### NOTES:

1. Aussie Skin 550 is a Heavy, Duty, Easy to Install, Puncture Resistant Sheet Waterproofing Membrane with added technologies creating excellent adhesion between the membrane and wet Concrete or Shot-Crete.
2. For proper membrane thickness and appropriate protection and drainage, refer to AVM System 500/502 Min Thickness Table.
3. PVC or metal pipe must be clean and free of foreign matter that would prevent Aussie Seal M adhesion.
4. Contact AVM if no drain board or protection board is specified.
5. Drain board must be connected to a permanent dewatering system if used in hydrostatic conditions
6. All nails, screws etc used to hang the Aussie Skin below the water table must be non-rusting and sealed with a 3"x3" patch of Aussie Skin 550 bonded with Aussie Skin double sided tape.

AVM Industries, Inc.  
8245 Remmet Ave, Canoga Park, CA 91304

Quality Waterproofing Products

888.414.1041 818.888.0050  
www.avmindustries.com

FILE NAME: 0550-4010B

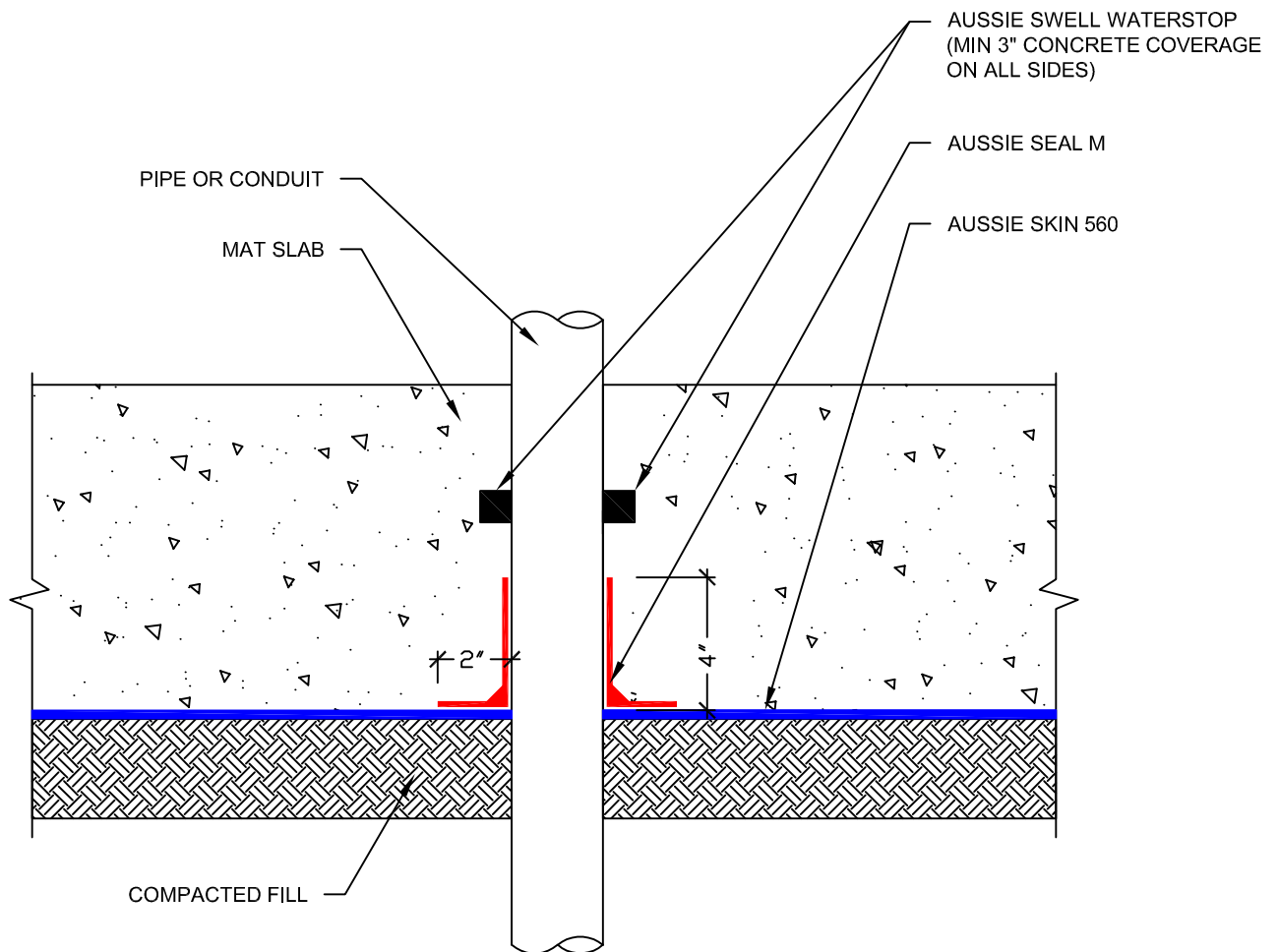
Protected by Copyright - AVM Industries, Inc. Revision Date 3/7/2019

DETAIL #:

**AVM-550-4015**

AVM System 550

## Slab Penetration



### NOTES:

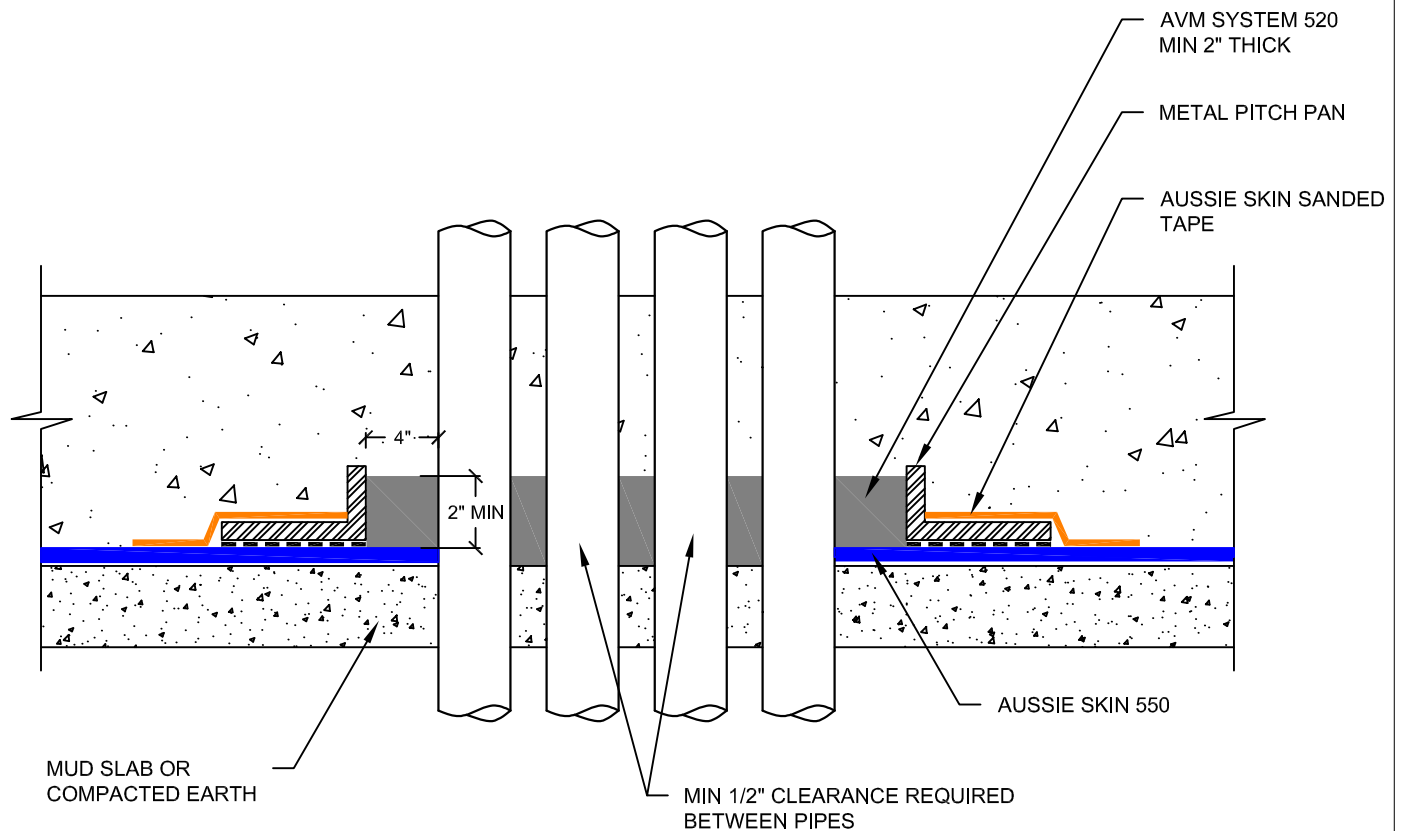
1. Aussie Skin 550 is a Heavy, Duty, Easy to Install, Puncture Resistant Sheet Waterproofing Membrane with added technologies creating excellent adhesion between the membrane and wet Concrete or Shot-Crete.
2. PVC or metal pipe must be clean and free of foreign matter that would prevent Aussie Seal M adhesion.
3. Contact AVM if no drain board or protection board is specified.

DETAIL #:

AVM-550-4020

AVM System 550

## Pipe Bank Pitch Pan



### NOTES:

1. Aussie Skin 550 is a Heavy, Duty, Easy to Install, Puncture Resistant Sheet Waterproofing Membrane with added technologies creating excellent adhesion between the membrane and wet Concrete or Shot-Crete.
2. Aussie Membrane 520 should be cured prior to concrete placement which may take up to 72 hours. Please consult AVM if scheduling does not allow this.

### Below Water Table Installations

101 For Aussie Skin installations below the water table, contact AVM to verify ALL details

AVM Industries, Inc.  
8245 Remmet Ave, Canoga Park, CA 91304

Quality Waterproofing Products

888.414.1041 818.888.0050  
www.avmindustries.com

FILE NAME: 0550-4020

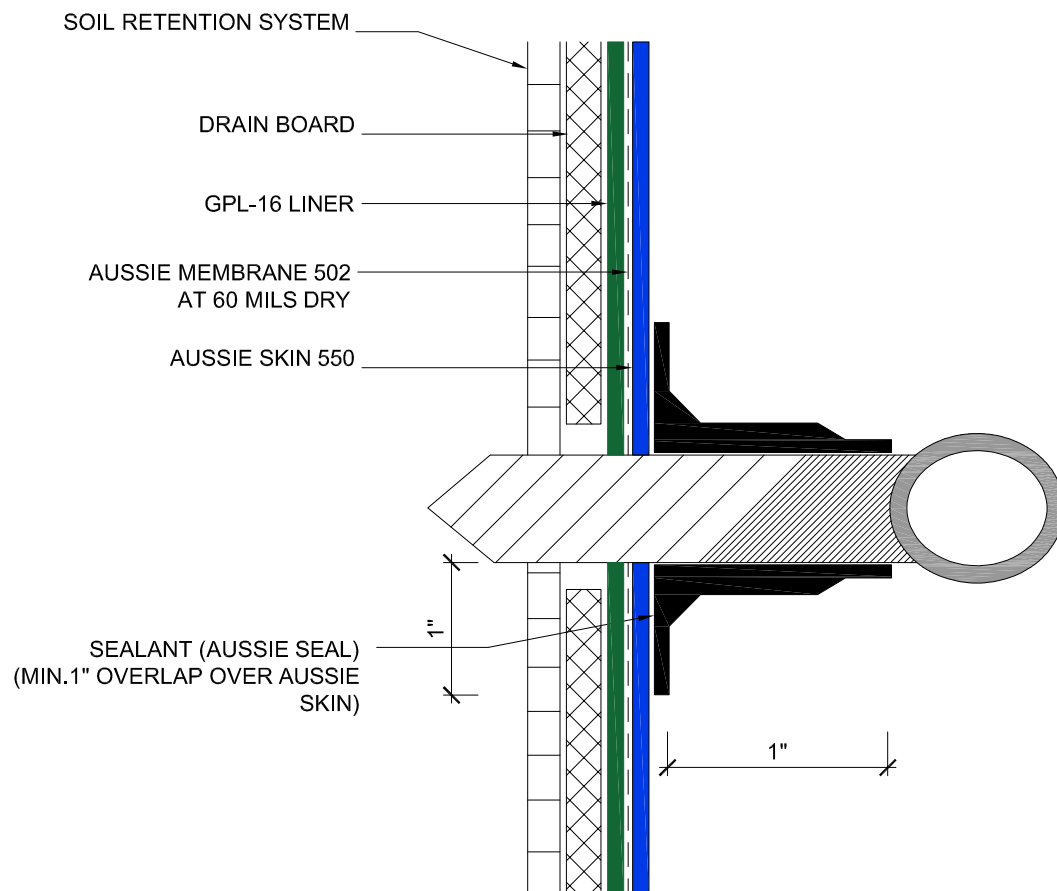
Protected by Copyright - AVM Industries, Inc. Revision Date 12/06/2018



DETAIL #:  
**AVM-550-4100B**

AVM System 550  
**Aussie Skin 550**

Rebar Tie  
Dual Layer System



NOTES:

1. Aussie Skin 550 is a Heavy, Duty, Easy to Install, Puncture Resistant Sheet Waterproofing Membrane with added technologies creating excellent adhesion between the membrane and wet Concrete or Shot-Crete.

***Below Water Table Installations***

Below the water table, drain board may be substituted with approved protection layer

AVM Industries, Inc.  
8245 Remmet Ave, Canoga Park, CA 91304

Quality Waterproofing Products

888.414.1041 818.888.0050  
[www.avmindustries.com](http://www.avmindustries.com)

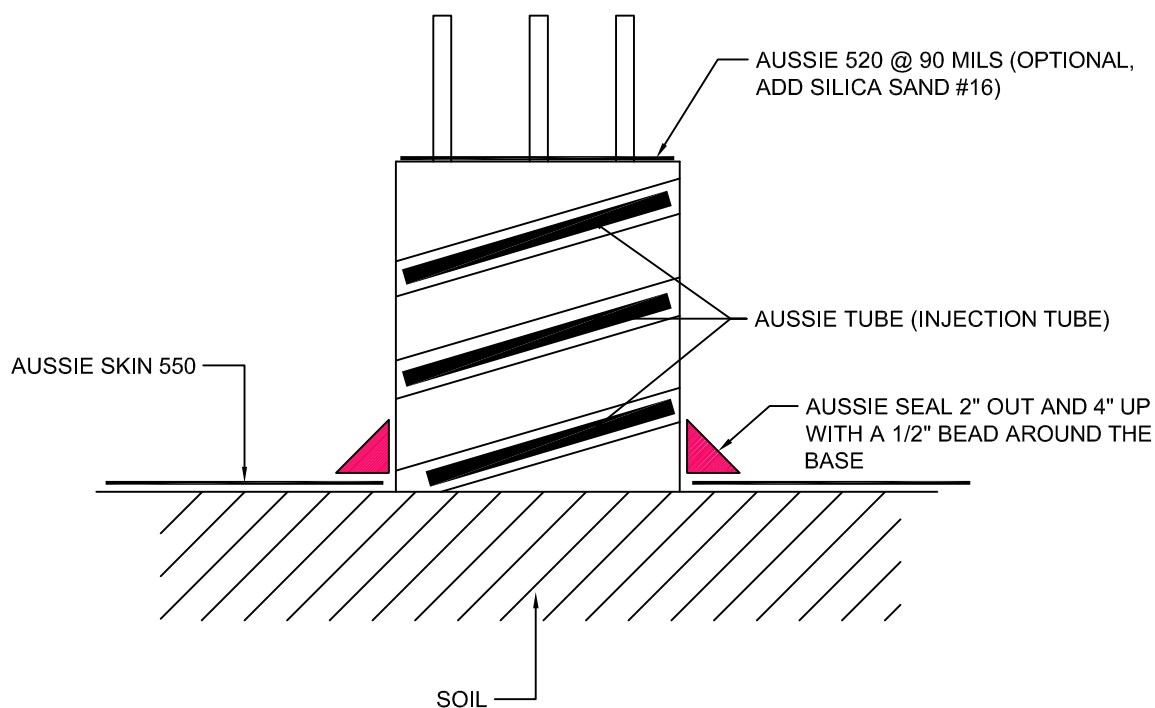
FILE NAME: 0550-4100B

Protected by Copyright - AVM Industries, Inc. Revision Date 8/9/2019

DETAIL #:  
**AVM-550-5201**

AVM System 550  
**Aussie Skin 550**

## Corrugated Pile Detail



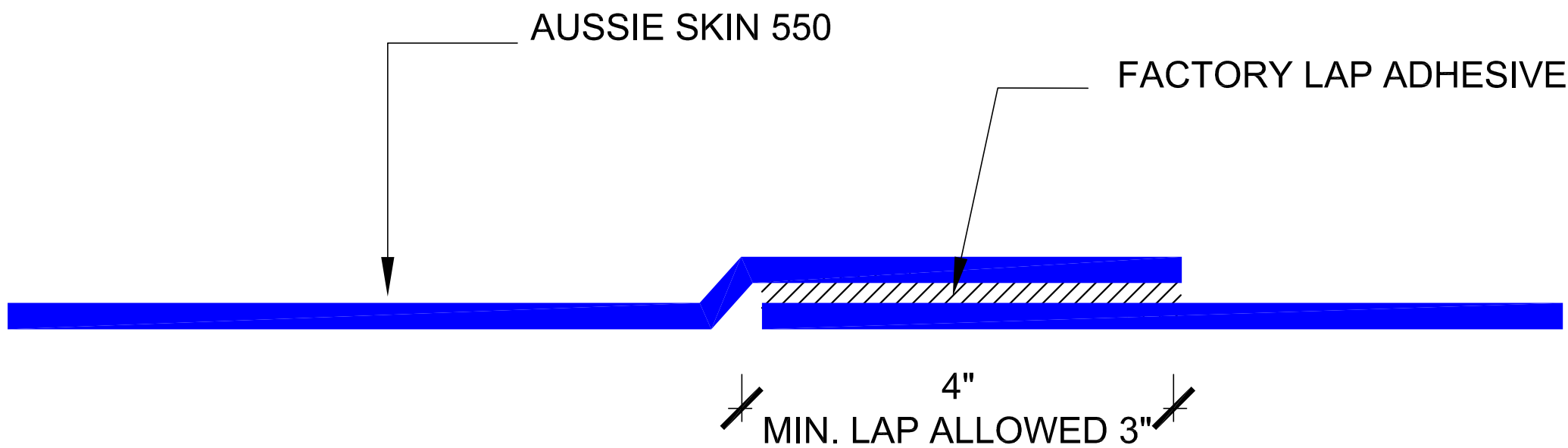
### NOTES:

1. Aussie Skin 550 is a Heavy, Duty, Easy to Install, Puncture Resistant Sheet Waterproofing Membrane with added technologies creating excellent adhesion between the membrane and wet Concrete or Shot-Crete.
2. All nails, screws etc used to hang the Aussie Skin above the water table must be non-rusting and sealed with approved Sealant.

### Below Water Table Installations

1. All nails, screws etc used to hang the Aussie Skin below the water table must be non-rusting and sealed with a 3"x3" patch of Aussie Skin 550 bonded with Aussie Skin Double Sided Tape.

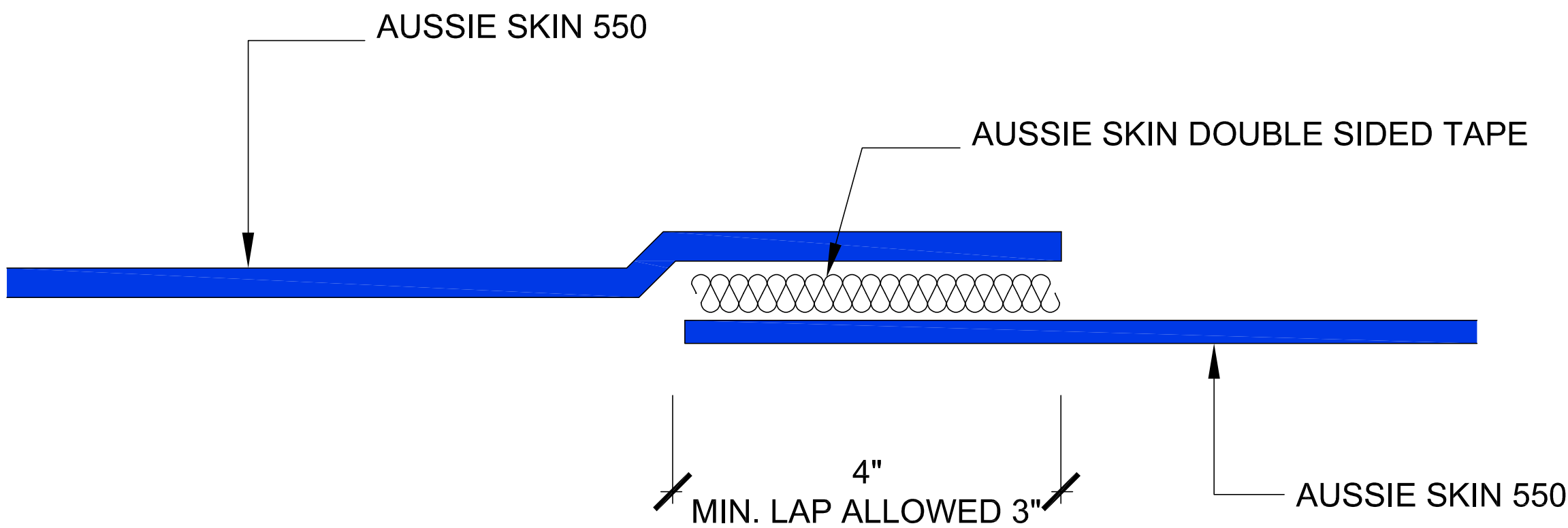
FACTORY LAP



Important Note: When installing the "Factory Lap", The Installation procedure should be as follows:

- 1) Remove the black plastic film from the factory lap to expose the adhesive.
- 2) Lay down the 2nd layer of Skin over the exposed Adhesive. (leave 1/8"-1/4" of adhesive exposed) Roll the steel roller over the 2nd layer of skin several times while applying significant pressure.
- 3) Verify seam is completely and properly bonded.

NON-FACTORY LAP



Important Note: When installing the "Non-Factory Lap", The Installation procedure should be as follows:

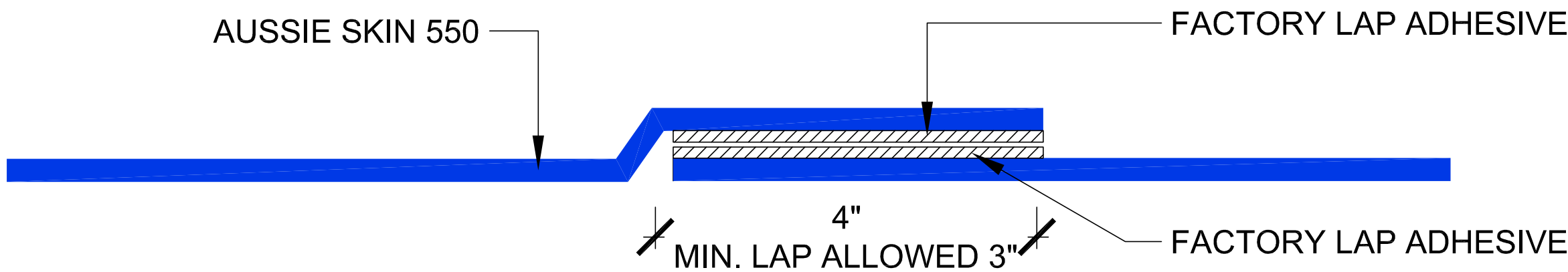
- 1) Remove the black plastic film from one side of the double-sided tape.
- 2) Lay down the Double-Sided Tape on the sanded side of the first layer of Aussie Skin.
- 3) THOROUGHLY COMPRESS THE DOUBLE-SIDED TAPE ONTO THE SANDED SIDE OF THE AUSSIE SKIN USING AVM'S APPROVED STEEL ROLLERS. (ROLL THE STEEL ROLLER OVER THE TAPE SEVERAL TIMES WHILE APPLYING SIGNIFICANT PRESSURE!)
- 4) Carefully remove the clear film (2nd layer of film) from the Double-Sided Tape.
- 5) Lay down the 2nd layer of Skin over the exposed double-Sided Tape. (Leave 1/8"-1/4" of tape exposed) Roll the steel roller over the 2nd layer of skin several times while applying significant pressure.
- 6) Verify seam is completely and properly bonded.
- 7) If multiple pieces of Double-Sided Tape are needed, overlap them!

- NOTES:
1. Aussie Skin 550 is a Heavy, Duty, Easy to Install, Puncture Resistant Sheet Waterproofing Membrane with added technologies creating excellent adhesion between the membrane and wet Concrete or Shot-Crete.
  2. All surfaces must be clean and sound before installing the Lap Joints
  3. Double sided tape must be used as supplied (min. 4" wide)

**Below Water Table Installations**

Below the water table, drain board may be substituted with approved protection layer

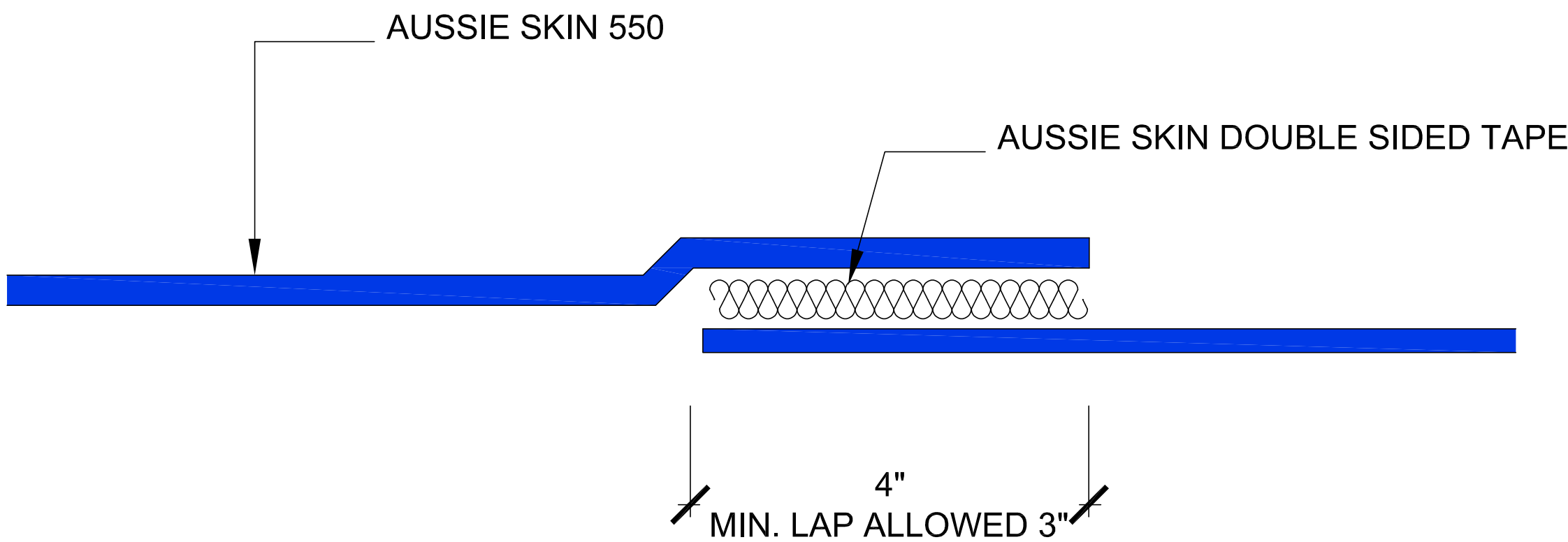
FACTORY LAP - DUAL SALVAGE EDGE



Important Note: When installing the "Factory Lap", The Installation procedure should be as follows:

- 1) Remove the black plastic film from the factory lap on the bottom sheet to expose the adhesive.
- 2) Remove the black plastic film from the factory lap on the top sheet and lay down onto 1st layer of Skin over the exposed Adhesive. (leave 1/8"-1/4" of adhesive exposed) Roll the steel roller over the 2nd layer of skin several times while applying significant pressure.
- 3) Verify seam is completely and properly bonded.

NON-FACTORY LAP



Important Note: When installing the "Non-Factory Lap", The Installation procedure should be as follows:

- 1) Remove the black plastic film from one side of the double-sided tape.
- 2) Lay down the Double-Sided Tape on the sanded side of the first layer of Aussie Skin.
- 3) THOROUGHLY COMPRESS THE DOUBLE-SIDED TAPE ONTO THE SANDED SIDE OF THE AUSSIE SKIN USING AVM'S APPROVED STEEL ROLLERS. (ROLL THE STEEL ROLLER OVER THE TAPE SEVERAL TIMES WHILE APPLYING SIGNIFICANT PRESSURE!)
- 4) Carefully remove the clear film (2nd layer of film) from the Double-Sided Tape.
- 5) Lay down the 2nd layer of Skin over the exposed double-Sided Tape. (Leave 1/8"-1/4" of tape exposed) Roll the steel roller over the 2nd layer of skin several times while applying significant pressure.
- 6) Verify seam is completely and properly bonded.
- 7) If multiple pieces of Double-Sided Tape are needed, overlap them!

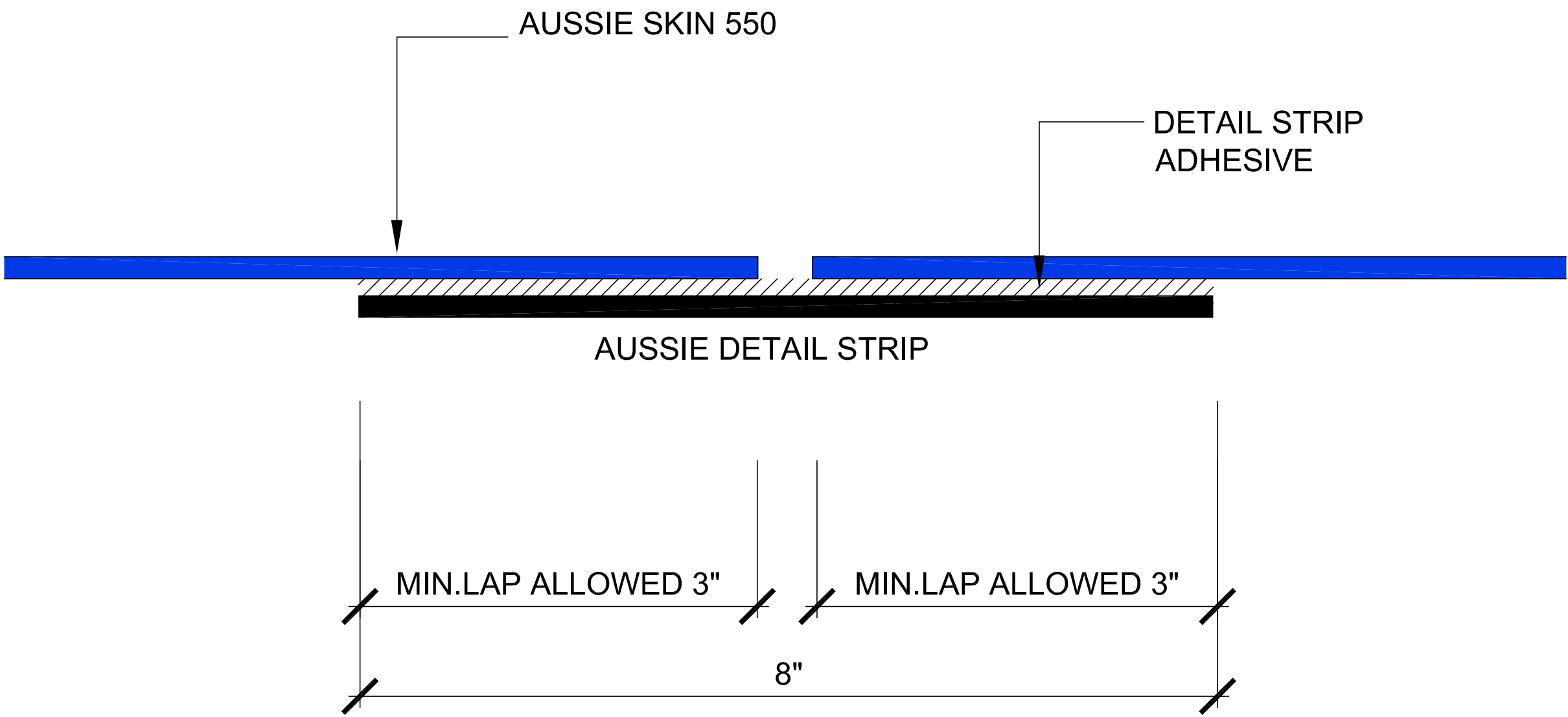
- NOTES:
1. Aussie Skin 550 is a Heavy, Duty, Easy to Install, Puncture Resistant Sheet Waterproofing Membrane with added technologies creating excellent adhesion between the membrane and wet Concrete or Shot-Crete.
  2. All surfaces must be clean and sound before installing the Lap Joints
  3. Double sided tape must be used as supplied (min. 4" wide)

**Below Water Table Installations**  
Below the water table, drain board may be substituted with approved protection layer

DETAIL #:  
**AVM-550-6001**

AVM System 550  
**Aussie Skin 550**

Non-Factory Lap with Detail Strip



Important Note: When installing the "Alternative Non-Factory Lap", The Installation procedure should be as follows:

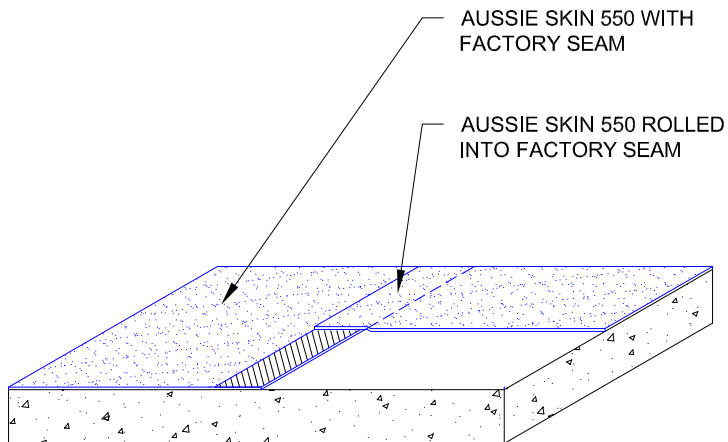
- 1) Remove the black plastic film from the Detail Strip to expose the Adhesive.
- 2) Lay down the first layer of Aussie Skin over the exposed Adhesive covering half the width of the detail strip. Roll the steel roller over the seam several times while applying significant pressure.
- 3) Lay down the 2nd layer of Aussie Skin over the remaining exposed adhesive. Leave 1/8"-1/4" of adhesive exposed between the two sheets of Aussie Skin. Roll the steel roller over the seam several times while applying significant pressure.
- 4) Verify seam is complete and properly bonded.

- NOTES:
1. Aussie Skin 550 is a Heavy, Duty, Easy to Install, Puncture Resistant Sheet Waterproofing Membrane with added technologies creating excellent adhesion between the membrane and wet Concrete or Shot-Crete.
  2. All surfaces must be clean and sound before installing the Lap Joints

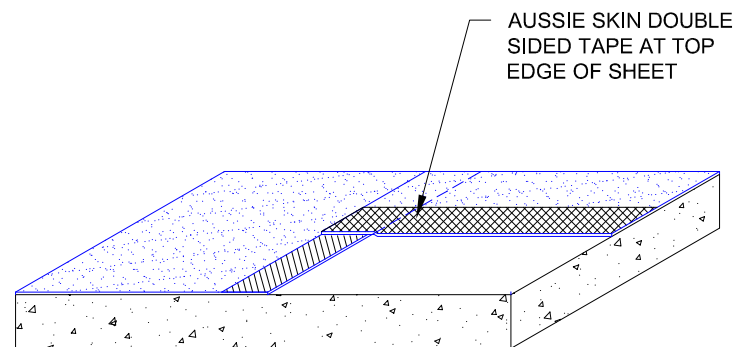
***Below Water Table Installations***  
Below the water table, drain board may be substituted with approved protection layer

DETAIL #:  
**AVM-550-6002**  
AVM System 550  
**Aussie Skin 550**

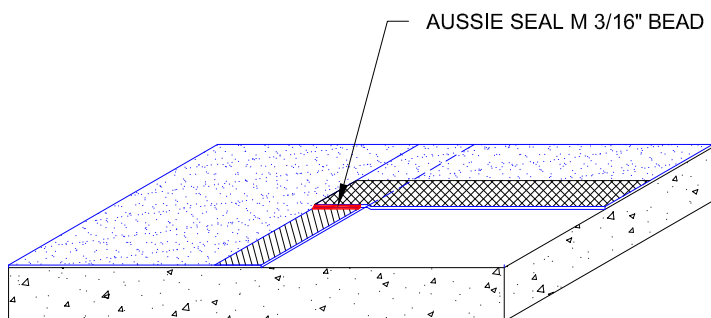
## T-Lap Detail



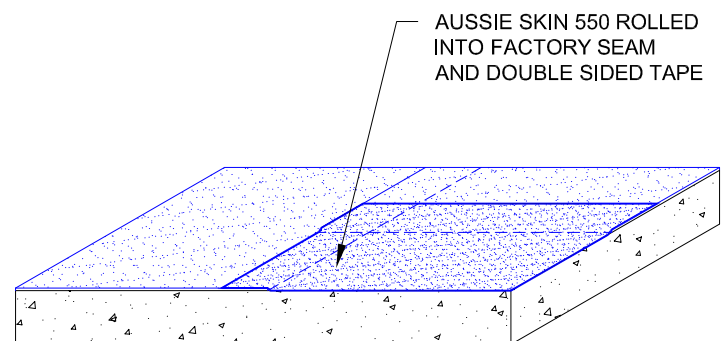
Step #1



Step #2



Step #3



Step #4

### Notes:

1. Aussie Skin 550 is a Heavy, Duty, Easy to Install, Puncture Resistant Sheet Waterproofing Membrane with added technologies creating excellent adhesion between the membrane and wet Concrete or Shot-Crete.

DETAIL #:

AVM-550-6010

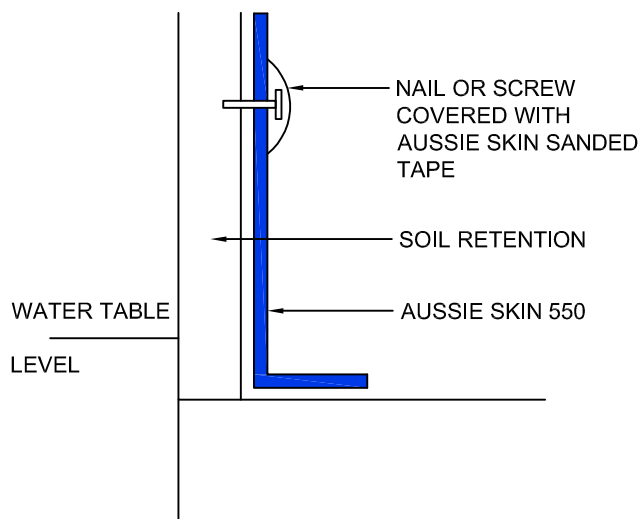
AVM System 550

Aussie Skin 550

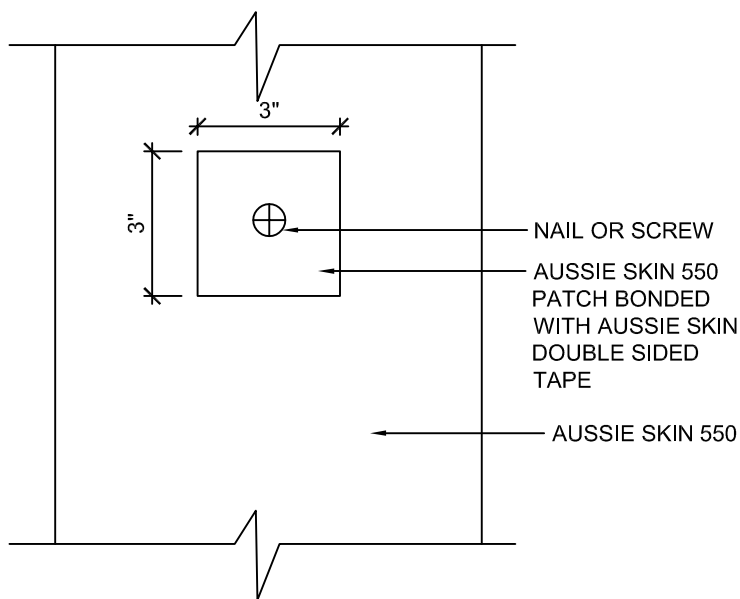
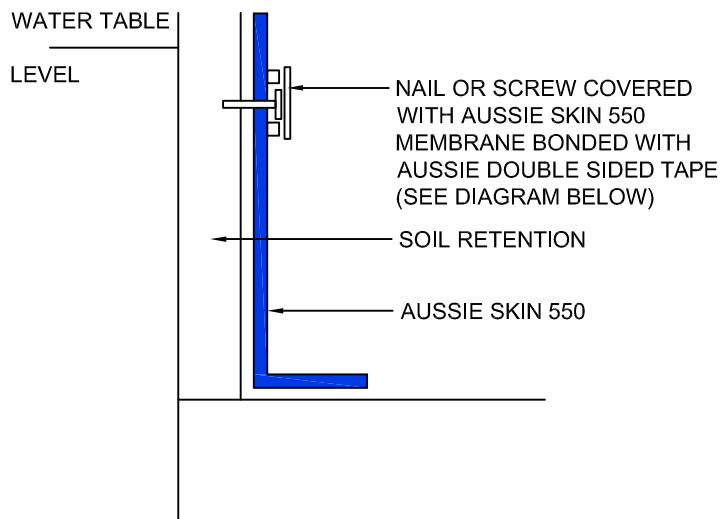
## Nail/Screw Detail



### NON-WATERTABLE PATCH



### WATERTABLE PATCH



#### NOTES:

1. Aussie Skin 550 is a Heavy, Duty, Easy to Install, Puncture Resistant Sheet Waterproofing Membrane with added technologies creating excellent adhesion between the membrane and wet Concrete or Shot-Crete.
2. All nails, screws etc used to hang the Aussie Skin above the water table must be non-rusting and sealed with approved Sealant.

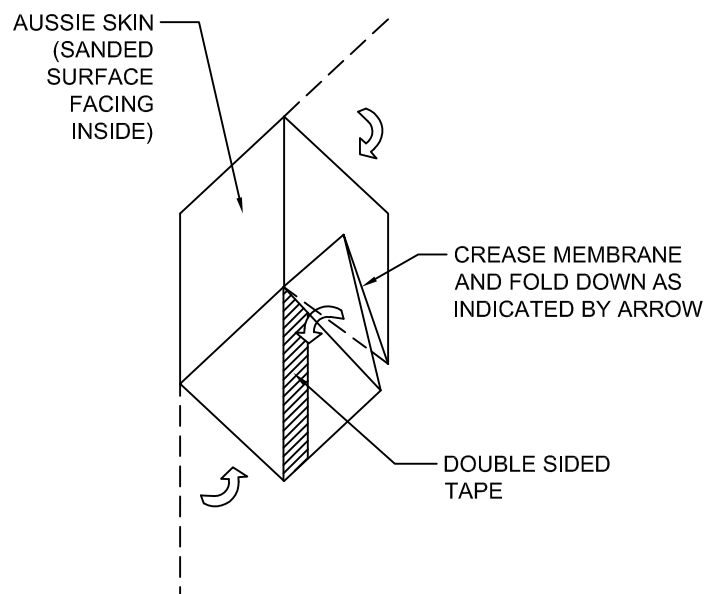
#### Below Water Table Installations

1. All nails, screws etc used to hang the Aussie Skin below the water table must be non-rusting and sealed with a 3"x3" patch of Aussie Skin 550 bonded with Aussie tape.



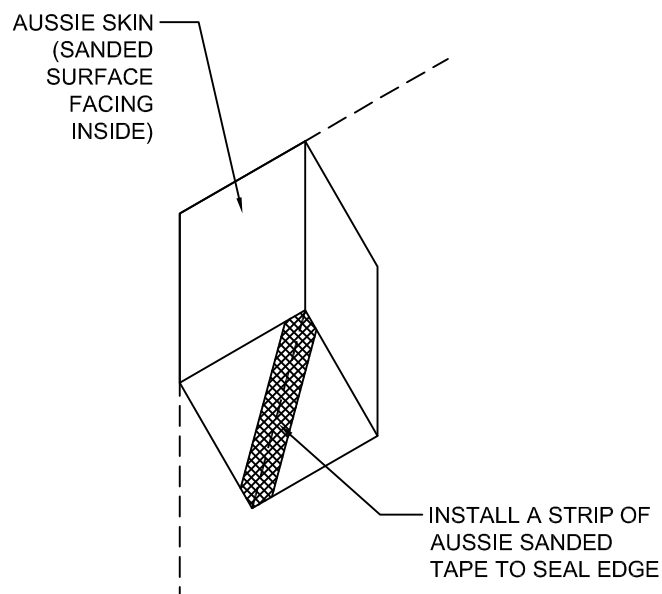
1

SANDED SURFACE FACING INSIDE



2

SANDED SURFACE FACING INSIDE



NOTES:

1. Aussie Skin 550 is a Heavy, Duty, Easy to Install, Puncture Resistant Sheet Waterproofing Membrane with added technologies creating excellent adhesion between the membrane and wet Concrete or Shot-Crete.
2. All surfaces must be clean and sound before installing the lap joints. (Remove excess sand before applying double sided tape).

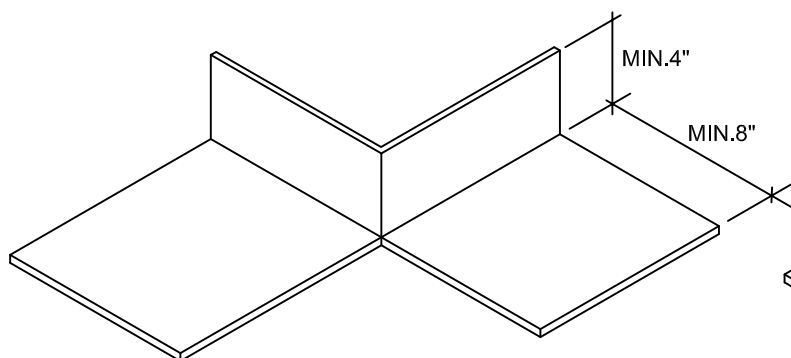


DETAIL #:  
**AVM-550-6260**  
AVM System 550  
**Aussie Skin 550**

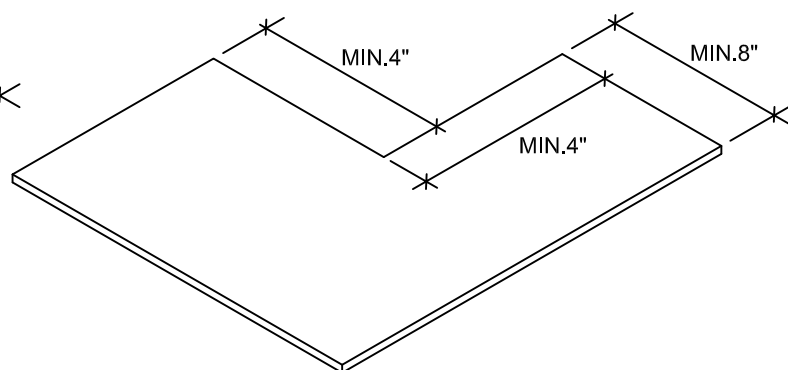
## Outside Corner Detail - at Bottom of Wall



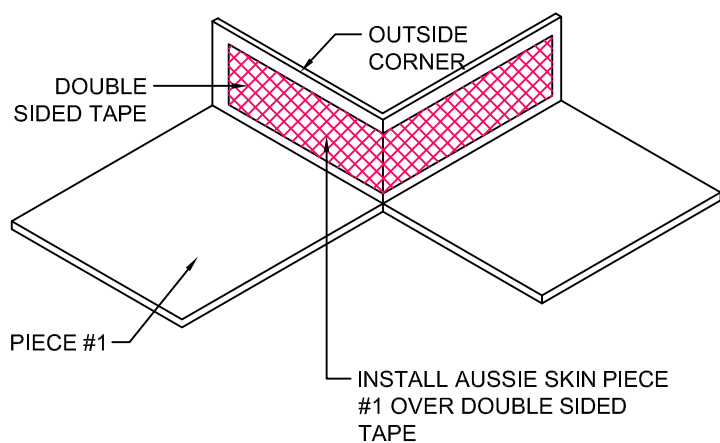
PIECE #1



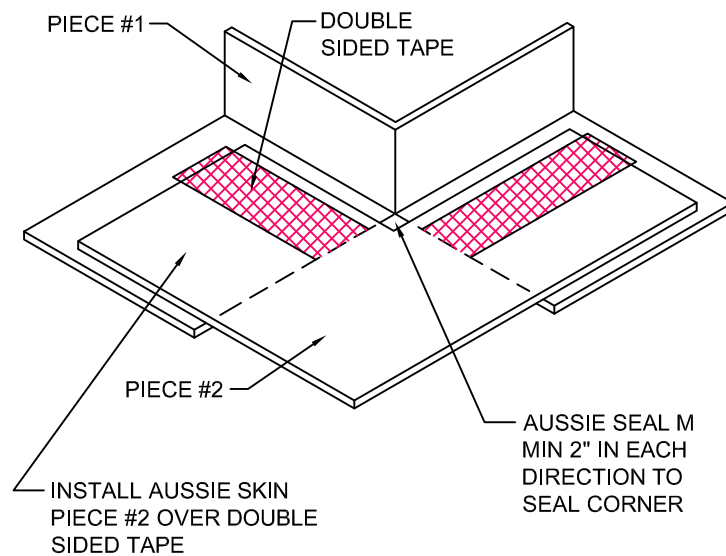
PIECE #2



STEP 1



STEP 2



### NOTES:

1. Aussie Skin 550 is a Heavy, Duty, Easy to Install, Puncture Resistant Sheet Waterproofing Membrane with added technologies creating excellent adhesion between the membrane and wet Concrete or Shot-Crete.
2. All surfaces must be clean and sound before installing the lap joints. (Remove excess sand before applying double sided tape)