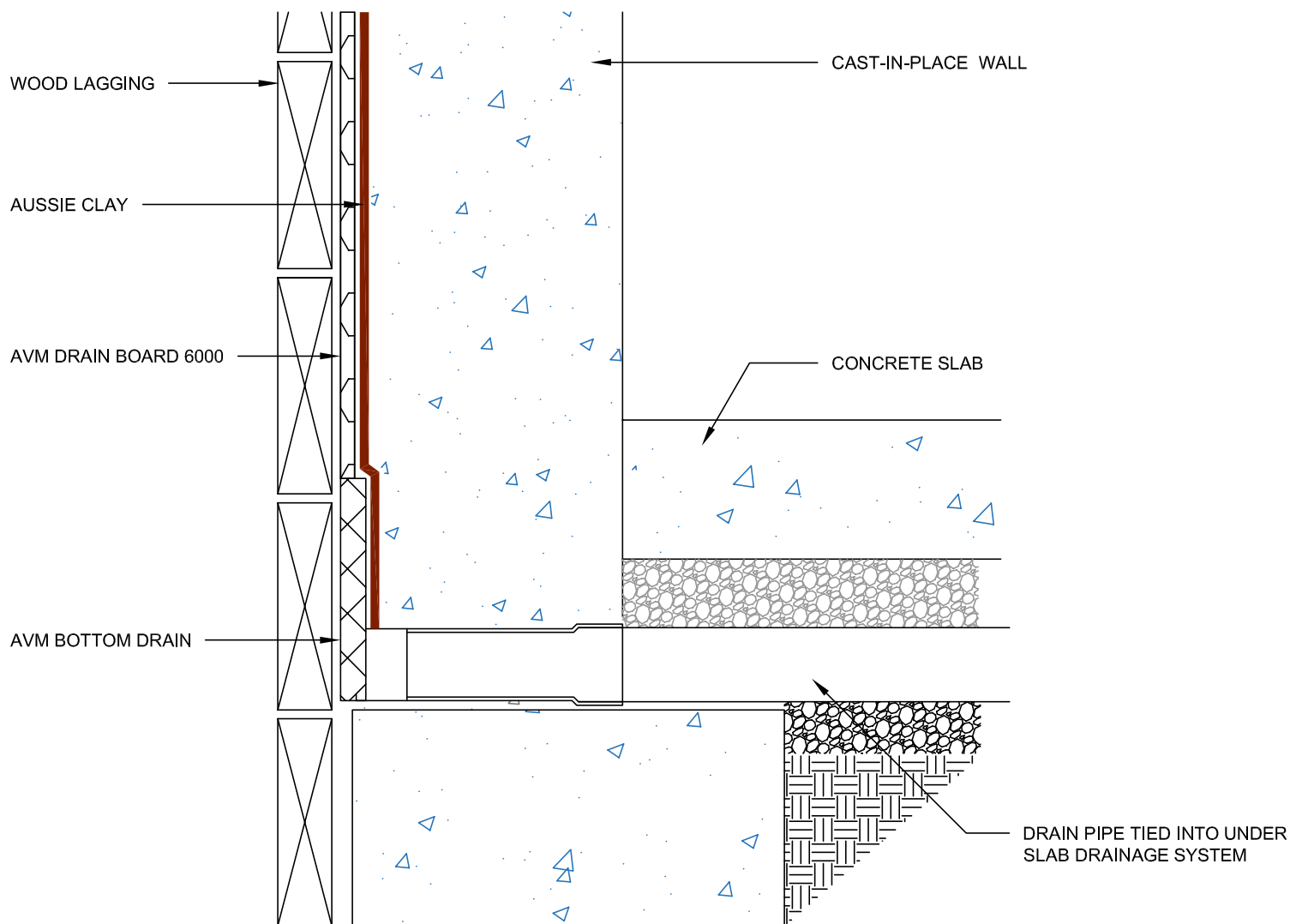


DETAIL #:
0590-0110

AVM System 590

Aussie Clay

Raised Slab with Drainage System Non-Hydrostatic Cast in Place Walls



Notes:

1. Aussie Clay & Aussie Clay PL are bentonite sheet membranes for waterproofing below-grade vertical and horizontal surfaces, including blindside and backfilled applications. Aussie Clay can be used with shotcrete or cast in place concrete in hydrostatic or non-hydrostatic conditions.
2. Install Aussie Clay and Aussie Clay PL with gray geotextile facing installer
3. Overlap sheet edges 4" and stagger seams min 12"
4. Fasten Aussie Clay with pneumatic staples or 1" washer-head fasteners placed maximum 24" on center