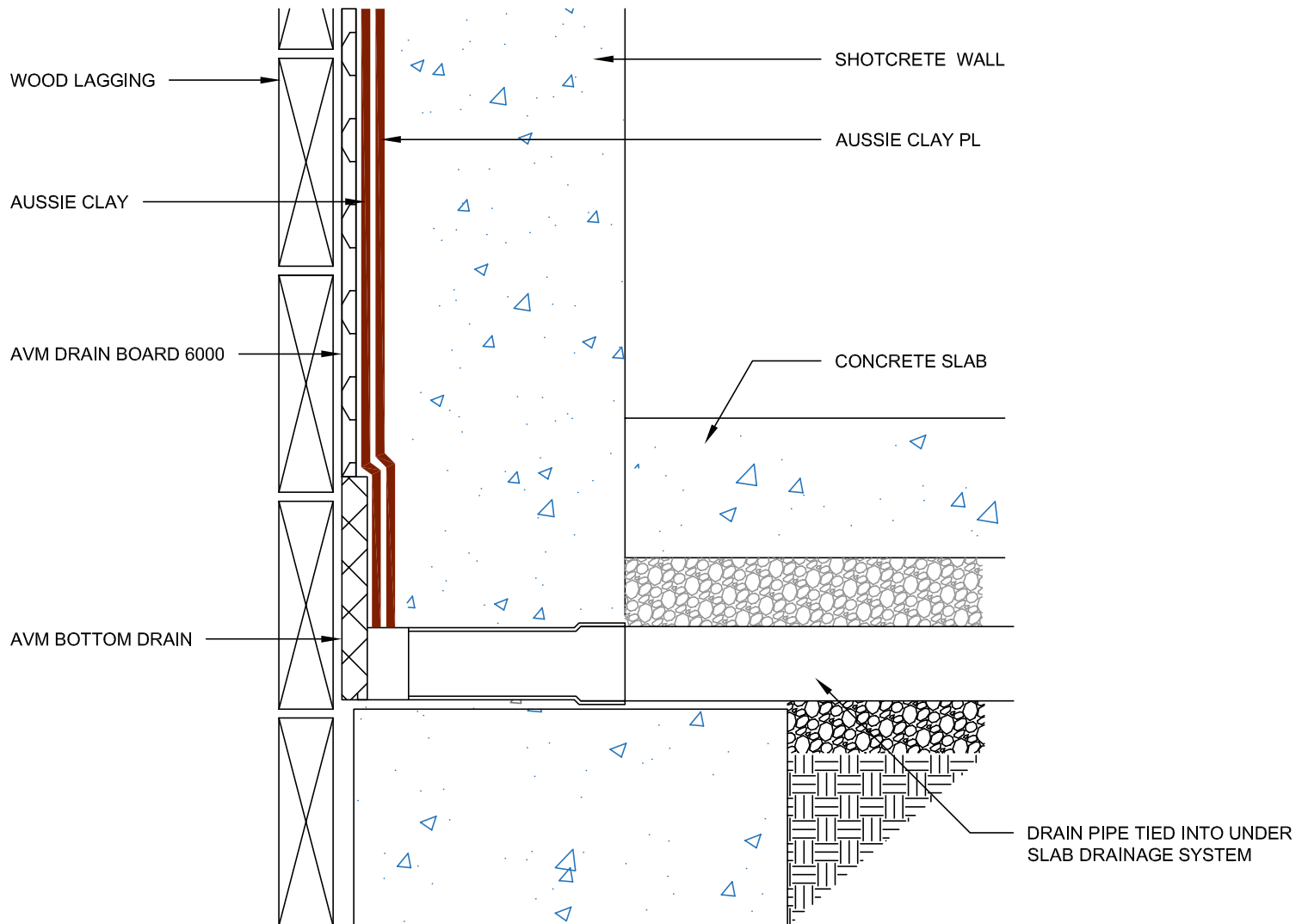


DETAIL #:
0590-0112

AVM System 590

Aussie Clay

Raised Slab with Drainage System Non-Hydrostatic Shotcrete Walls



Notes:

1. Aussie Clay & Aussie Clay PL are bentonite sheet membranes for waterproofing below-grade vertical and horizontal surfaces, including blindside and backfilled applications. Aussie Clay can be used with shotcrete or cast in place concrete in hydrostatic or non-hydrostatic conditions.
2. Fasten Aussie Clay with pneumatic staples or 1" washer-head fasteners placed maximum 24" on center
3. Install Aussie Clay and Aussie Clay PL with gray geotextile facing installer.
4. Overlap sheet edges 4" and stagger seams min 12"