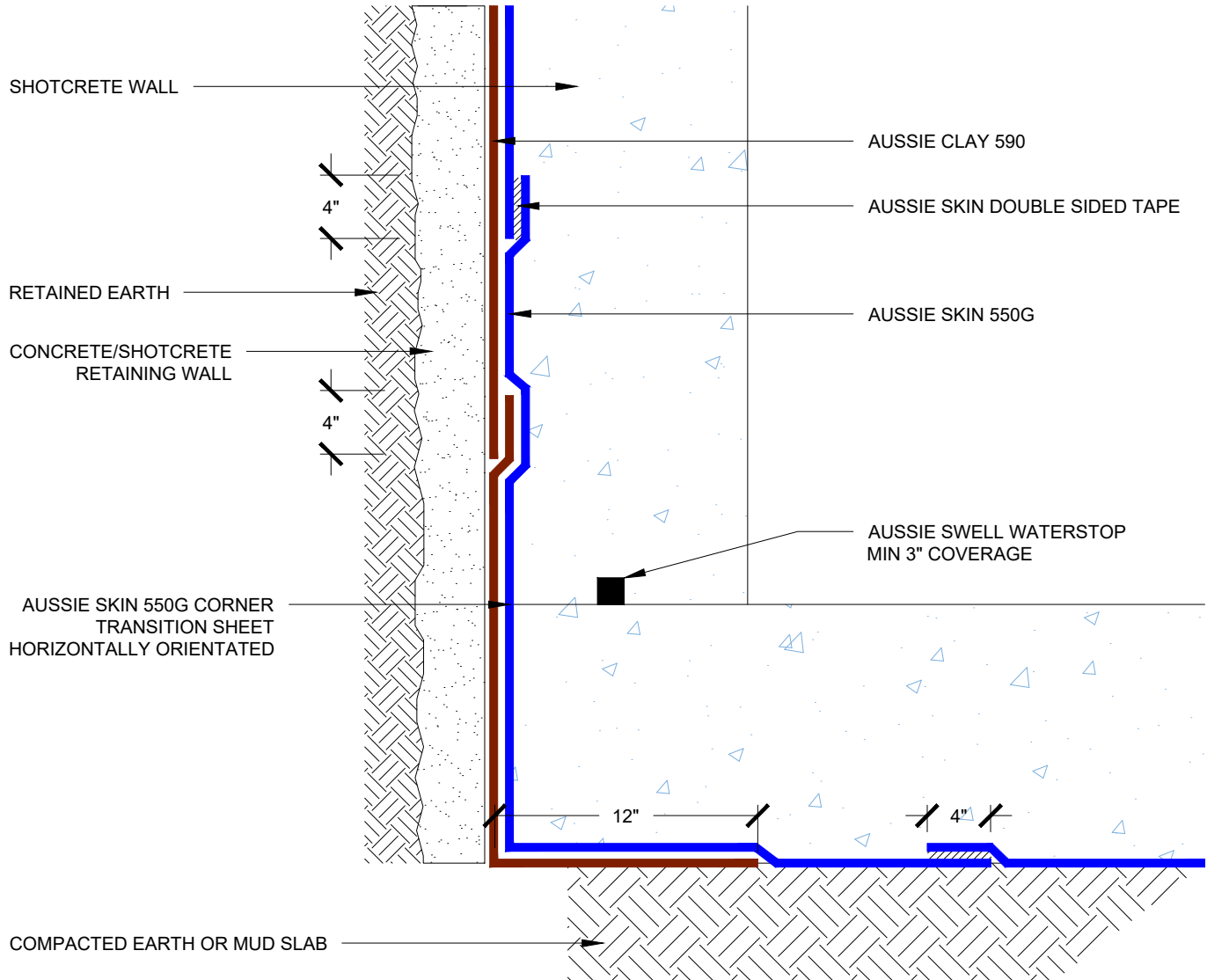


DETAIL #:
0550G-1214AC

AVM System 550G/590

Blind Side Waterproofing over Concrete/Shotcrete Aussie Clay Dual System - Hydrostatic



Notes:

1. Aussie Skin 550G is a Heavy, Duty, Easy to Install, Puncture Resistant Sheet Waterproofing Membrane with added technologies creating excellent adhesion between the membrane and wet Concrete or Shot-Crete.
2. Drain board must be connected to permanent dewatering system if used in hydrostatic conditions.
3. All nails, screws etc used to hang the Aussie Skin below the water table must be non-rusting and sealed with a 3"x3" patch of Aussie Skin 550G bonded with Aussie Skin double sided tape.
4. See details AVM-550G-6000, AVM-550G-60002, AVM-550G-6004, and AVM-550G-6010 for Aussie Skin Lap Details