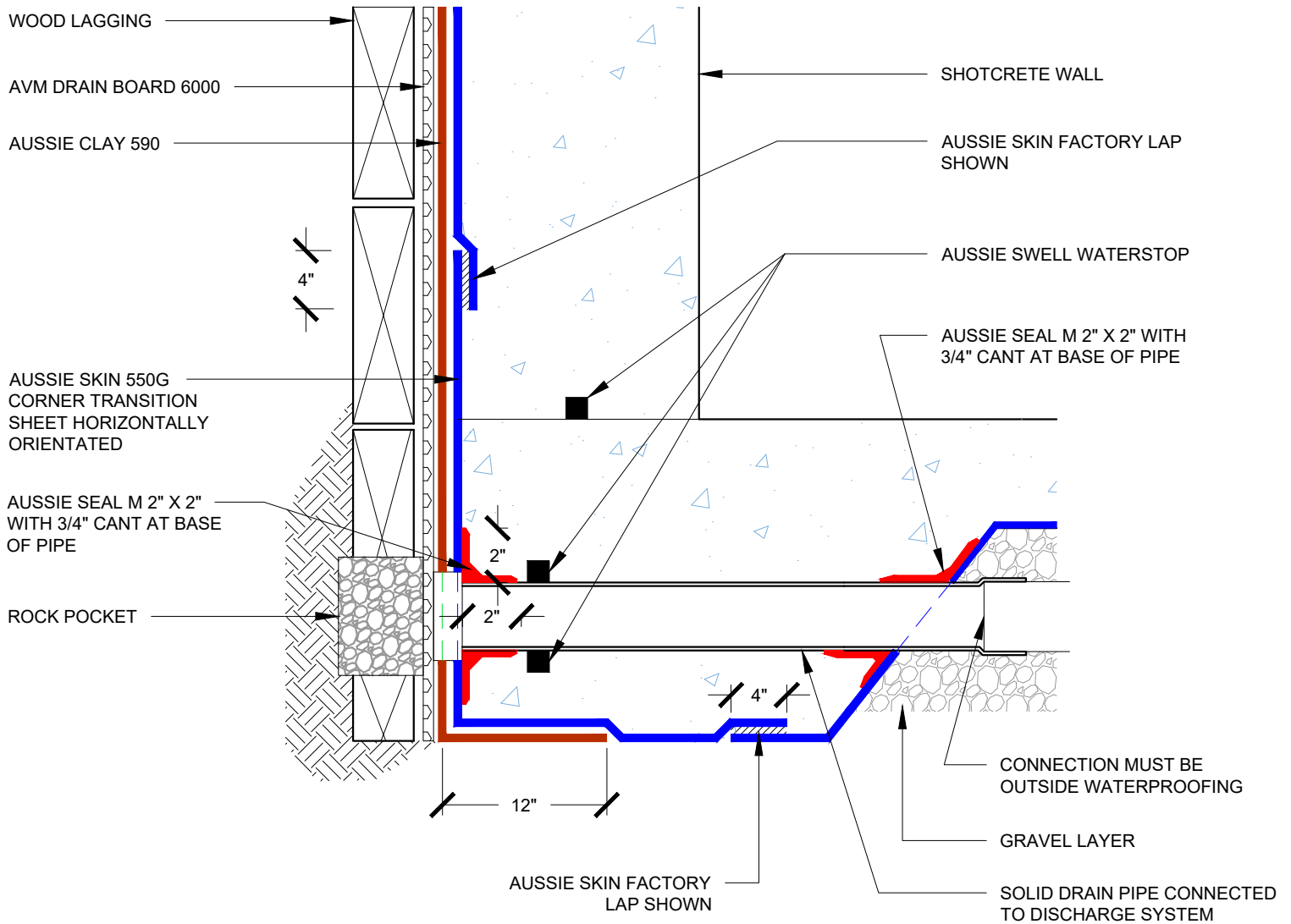


DETAIL #:  
**0550G-1220AC**  
 AVM System 550G/590

Lagging Wall with Rock Pocket  
 Aussie Clay Dual System



**Notes:**

1. Aussie Skin 550G is a Heavy, Duty, Easy to Install, Puncture Resistant Sheet Waterproofing Membrane with added technologies creating excellent adhesion between the membrane and wet Concrete or Shot-Crete.
2. All surfaces must be clean and sound before installing the lap joints. (Remove excess sand before applying double sided tapSee details
3. See details AVM-550G-6000, AVM-550G-60002, AVM-550G-6004, and AVM-550G-6010 for Aussie Skin Lap Details
4. Drain board must be connected to a permanent dewatering system if used in hydrostatic conditions.