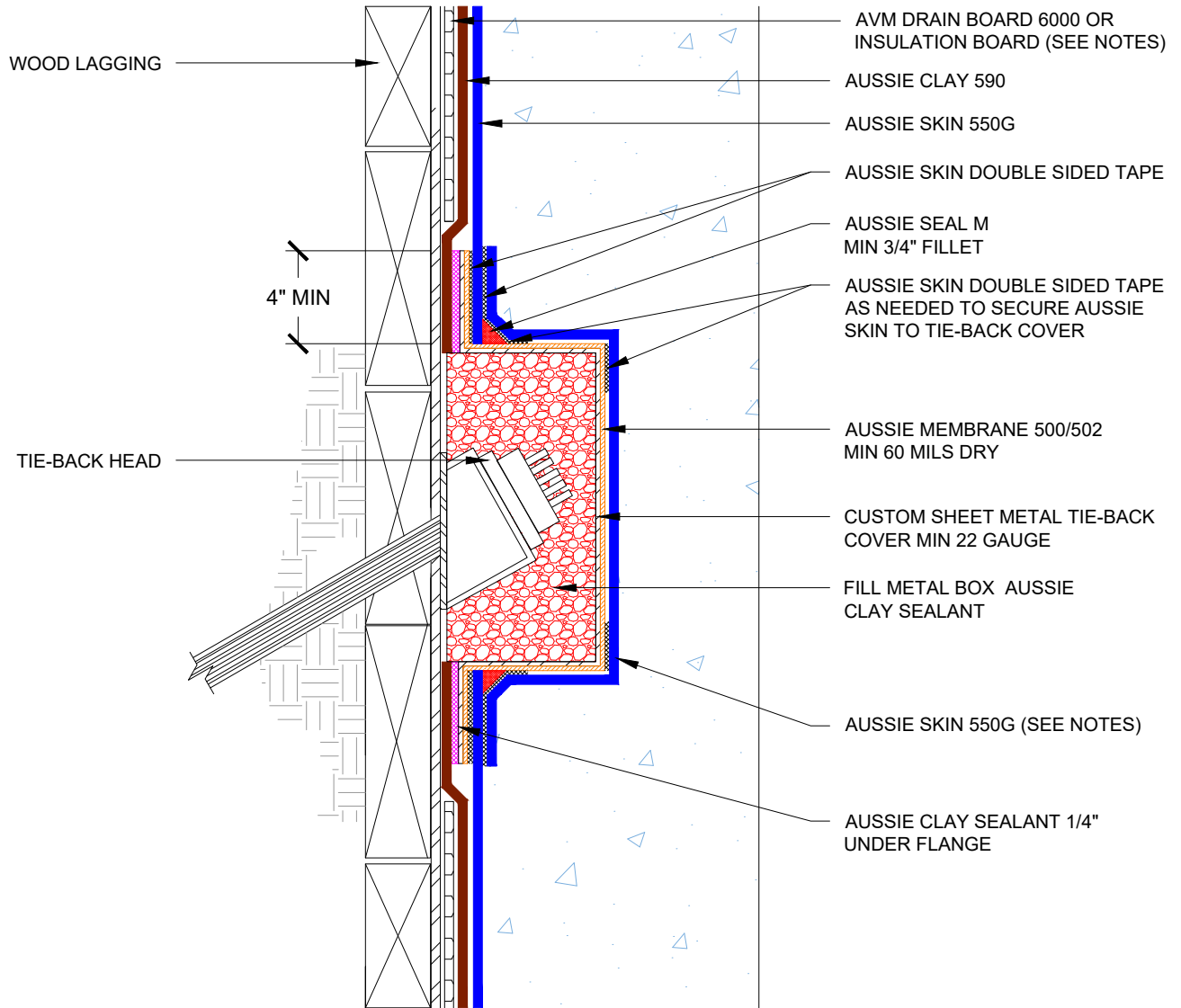


DETAIL #:
AVM-550G-1530AC
Aussie Skin 550G/590

Metal Tie-Back Cover Aussie Clay Dual System



Only Use if AVM's Standard Tie-Back Cover Cannot be Used



Notes:

1. Aussie Skin 550G is a Heavy, Duty, Easy to Install, Puncture Resistant Sheet Waterproofing Membrane with added technologies creating excellent adhesion between the membrane and wet Concrete or Shot-Crete.
2. Contact AVM if no drain board or protection board is specified.
3. Relief cuts may be needed to form Aussie Skin around tie-back cover. All relief cuts should be covered with Sanded Tape.
4. All nails, screws etc used to hang the Aussie Skin above the water table must be non-rusting and sealed with AVM approved Sealant.
5. Drain board must be connected to a permanent dewatering system if used in hydrostatic conditions