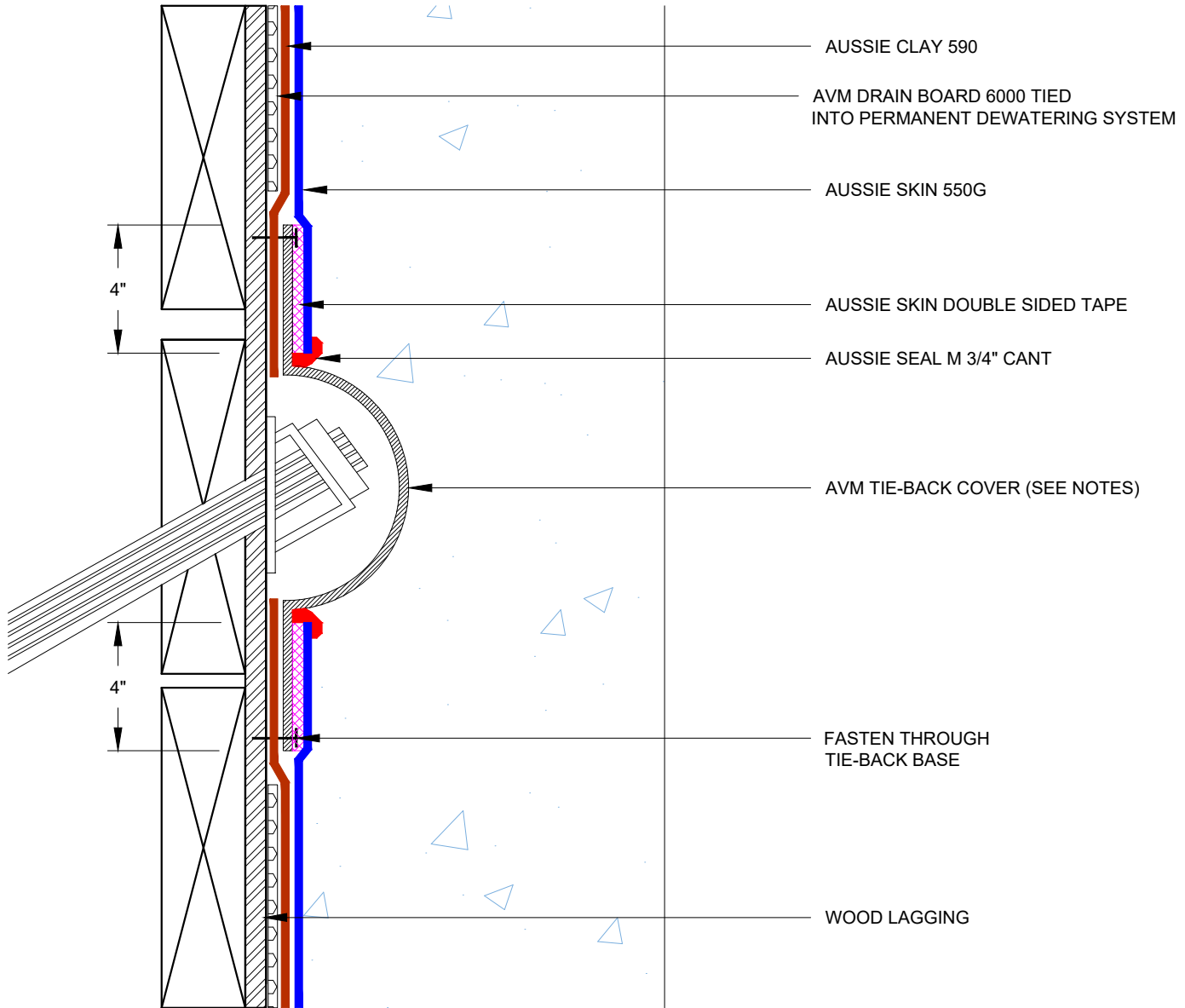


DETAIL #:
0550G-1533AC
 AVM System 550G/590

Tie-Back Cover Aussie Clay Dual System



Notes:

1. Aussie Skin 550G is a Heavy, Duty, Easy to Install, Puncture Resistant Sheet Waterproofing Membrane with added technologies creating excellent adhesion between the membrane and wet Concrete or Shot-Crete.
2. Aussie Clay & Aussie Clay PL are bentonite sheet membranes for waterproofing below-grade vertical and horizontal surfaces, including blindside and backfilled applications. Aussie Clay can be used with shotcrete or cast in place concrete in hydrostatic or non-hydrostatic conditions.
3. Fasten Aussie Clay with pneumatic staples or 1" washer-head fasteners placed maximum 24" on center
4. Install Aussie Clay and Aussie Clay PL with gray geotextile facing installer.
5. Overlap sheet edges 4" and stagger seams min 12"
6. AVM tie-back covers are available in 6" and 8" domes
7. See details AVM-550G-6000, AVM-550G-60002, AVM-550G-6004, and AVM-550G-6010 for Aussie Skin Lap Details