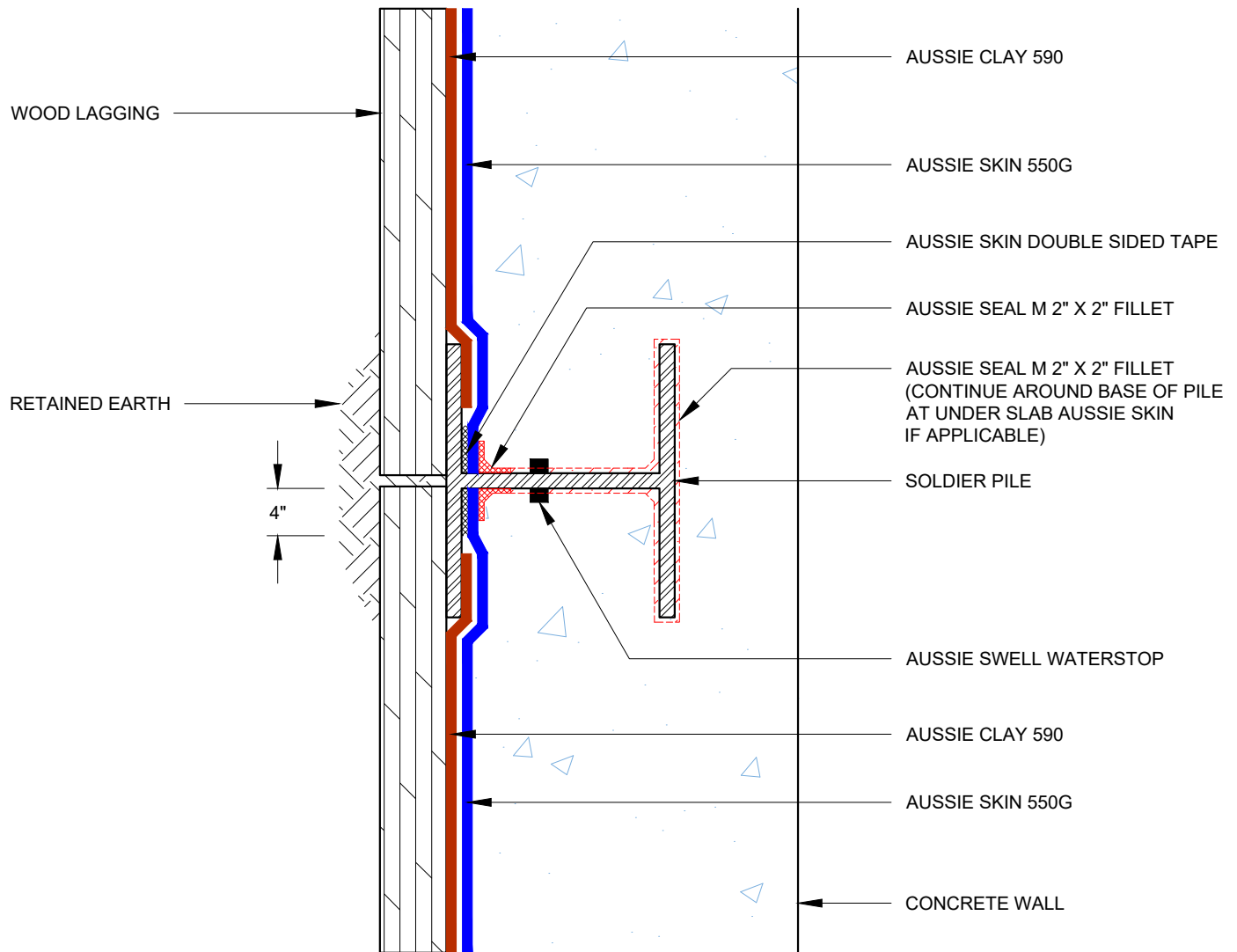


DETAIL #:
0550G-1540AC
AVM System 550G/590

Back Lagged Soldier Pile Aussie Clay Dual System



Notes:

1. Aussie Skin 550G is a Heavy, Duty, Easy to Install, Puncture Resistant Sheet Waterproofing Membrane with added technologies creating excellent adhesion between the membrane and wet Concrete or Shot-Crete.
2. Aussie Clay & Aussie Clay PL are bentonite sheet membranes for waterproofing below-grade vertical and horizontal surfaces, including blindside and backfilled applications. Aussie Clay can be used with shotcrete or cast in place concrete in hydrostatic or non-hydrostatic conditions.
3. Fasten Aussie Clay with pneumatic staples or 1" washer-head fasteners placed maximum 24" on center
4. Install Aussie Clay and Aussie Clay PL with gray geotextile facing installer.