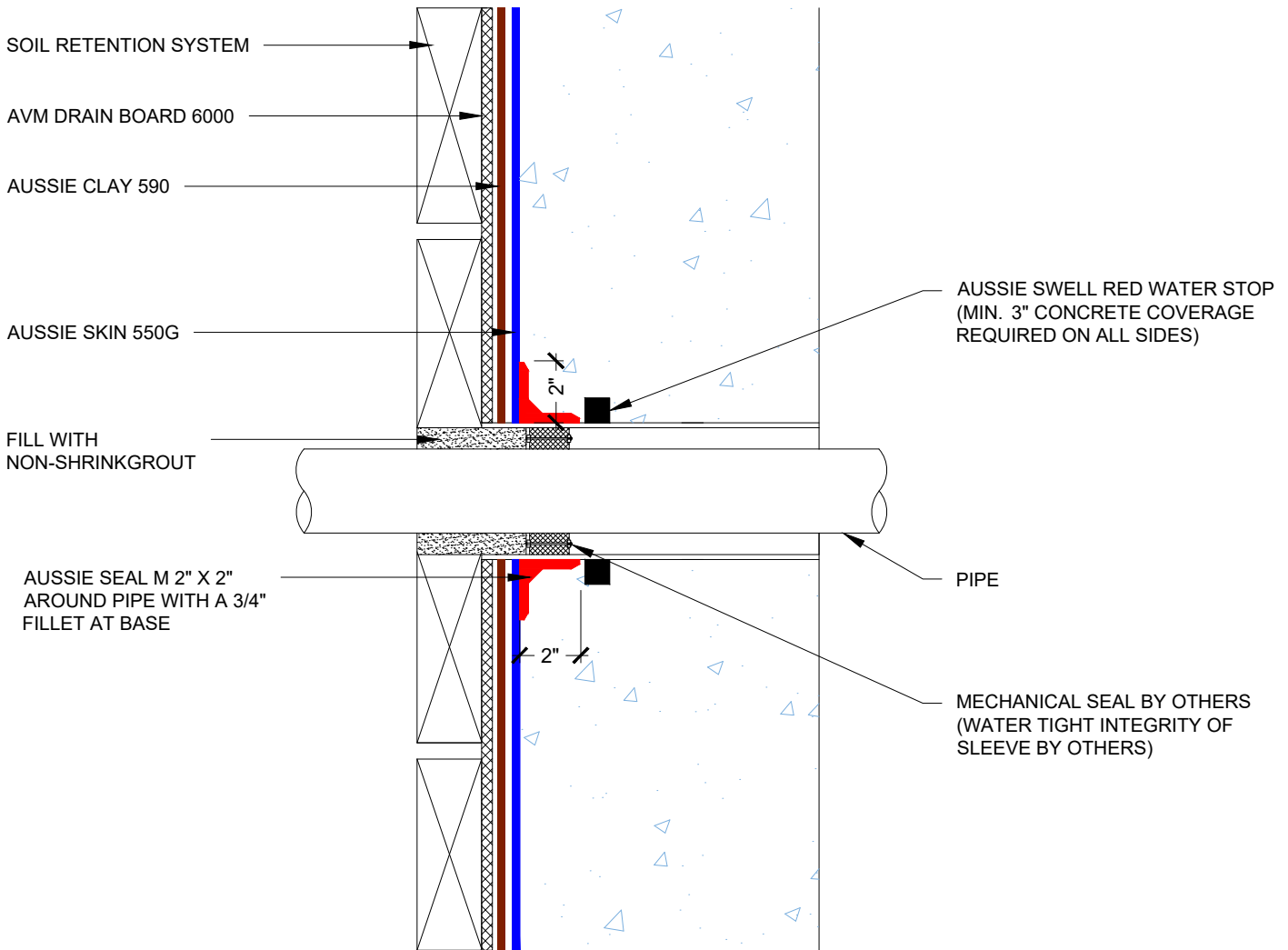


DETAIL #:

**AVM-550G-4005AC**

AVM System 550G/590

## Sleeved Pipe Penetration Aussie Clay Dual System



**NOTES:**

1. Aussie Skin 550G is a Heavy, Duty, Easy to Install, Puncture Resistant Sheet Waterproofing Membrane with added technologies creating excellent adhesion between the membrane and wet Concrete or Shot-Crete.
2. PVC or metal pipe must be clean and free of foreign matter that would prevent Aussie Seal M adhesion.
3. Contact AVM if no drain board or protection board is specified.
4. Drain board must be connected to a permanent dewatering system if used in hydrostatic conditions.
5. All nails, screws etc used to hang the Aussie Skin below the water table must be non-rusting and sealed with a 3"x3" patch of Aussie Skin 550G bonded with Aussie Skin double sided tape.