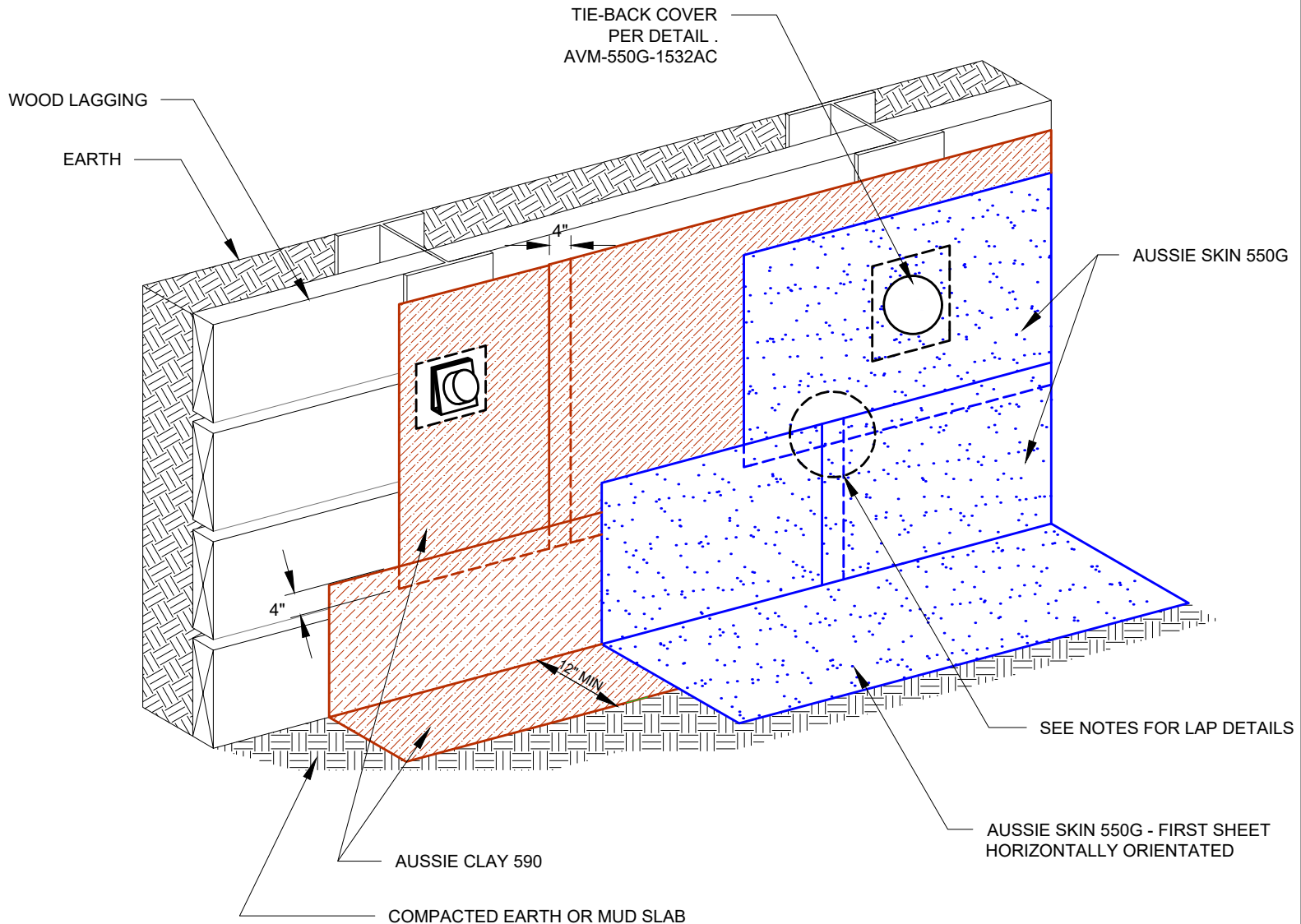


DETAIL #:  
**0550G-1200AC**  
AVM System 550G/590

## Typical Lagging Wall Aussie Clay Dual System



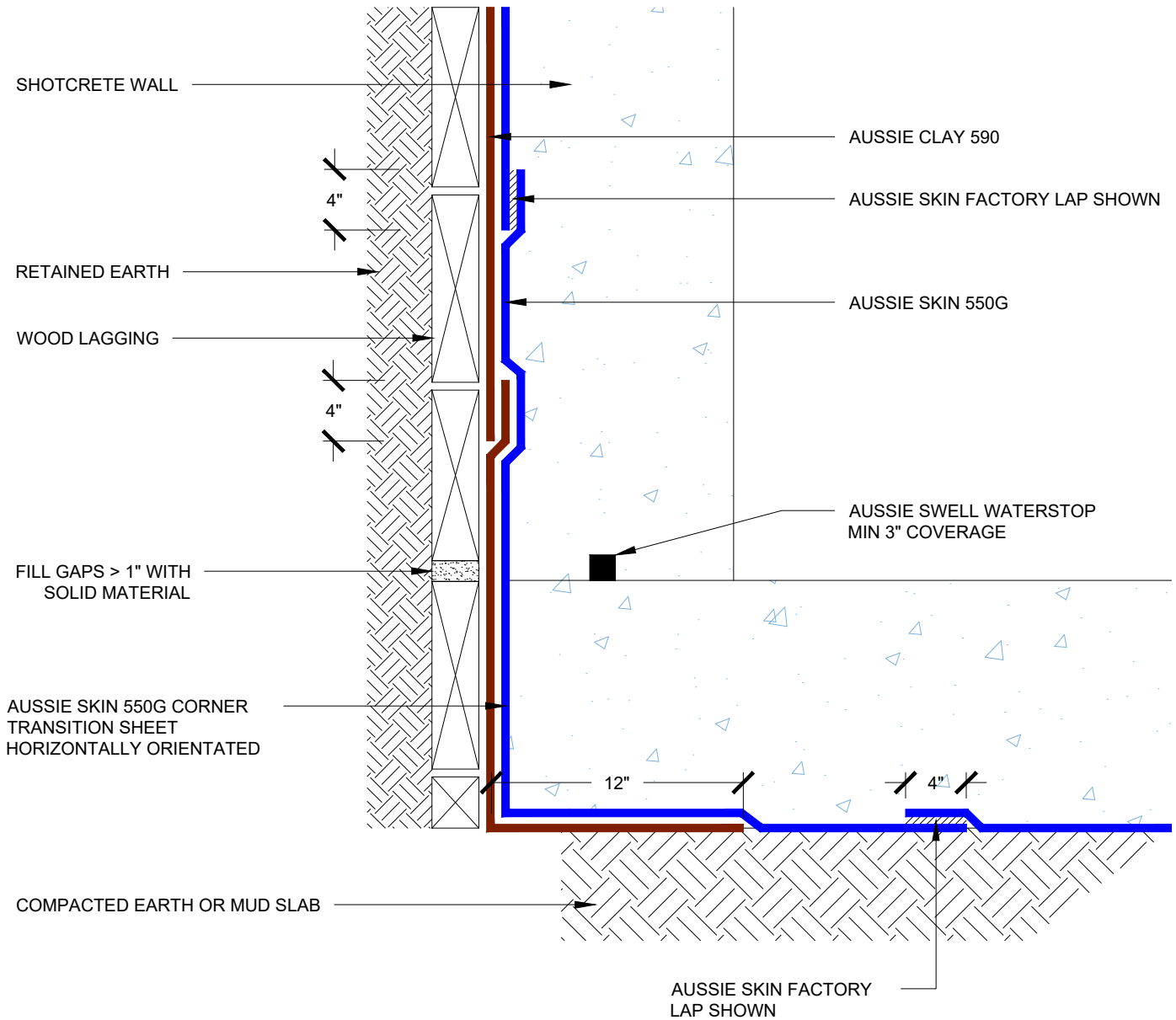
### Notes:

1. Aussie Clay & Aussie Clay PL are bentonite sheet membranes for waterproofing below-grade vertical and horizontal surfaces, including blindside and backfilled applications. Aussie Clay can be used with shotcrete or cast in place concrete in hydrostatic or non-hydrostatic conditions.
2. Fasten Aussie Clay with pneumatic staples or 1" washer-head fasteners placed maximum 24" on center
3. Install Aussie Clay and Aussie Clay PL with gray geotextile facing installer.
4. Overlap sheet edges 4" and stagger seams min 12"
5. See details AVM-550G-6000, AVM-550G-60002, AVM-550G-6004, and AVM-550G-6010 for Aussie Skin Lap Details

DETAIL #:  
0550G-1212AC

AVM System 550G/590

## Blind Side Waterproofing over Lagging Aussie Clay Dual System - Hydrostatic



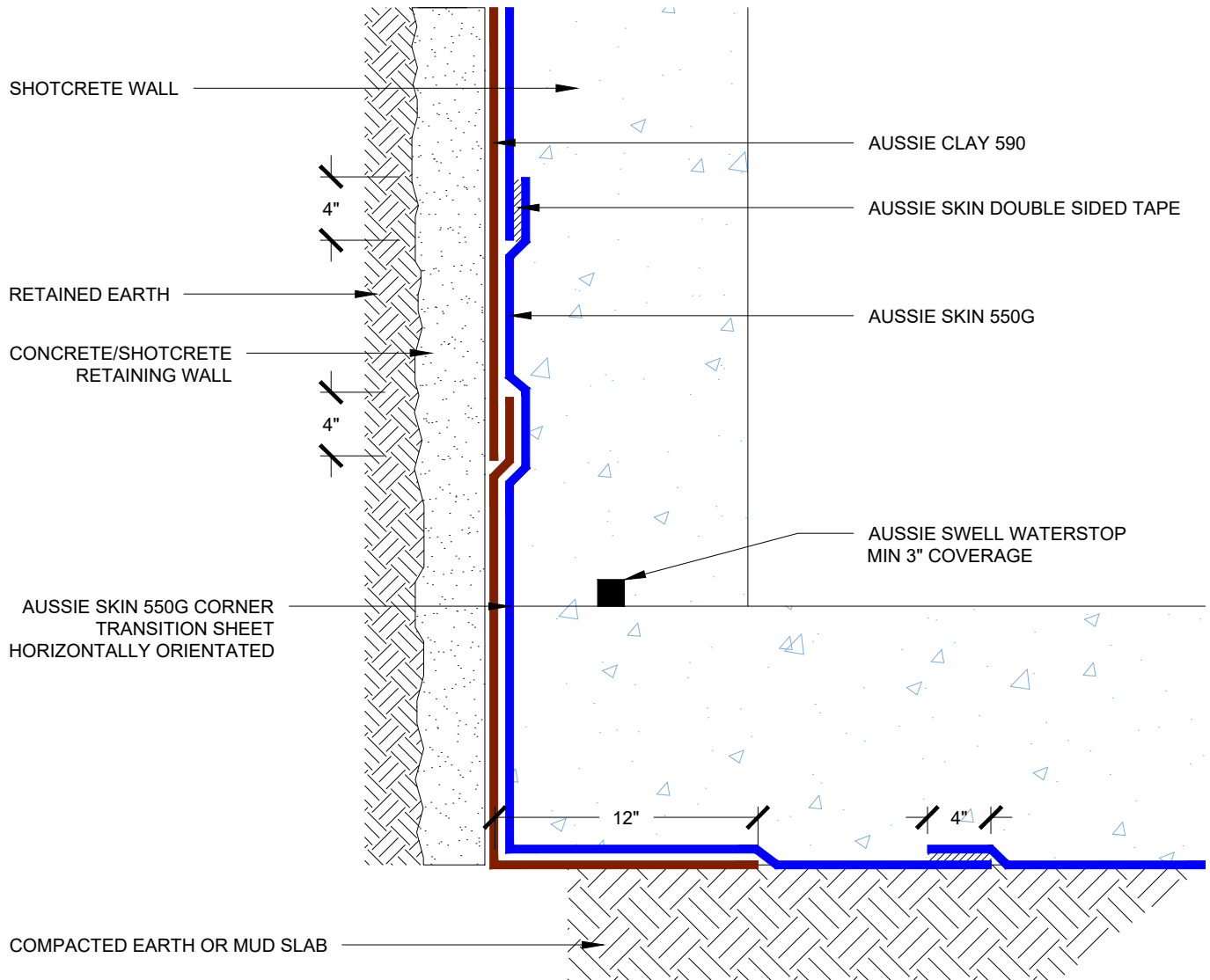
### Notes:

1. Aussie Skin 550G is a Heavy, Duty, Easy to Install, Puncture Resistant Sheet Waterproofing Membrane with added technologies creating excellent adhesion between the membrane and wet Concrete or Shot-Crete.
2. Drain board must be connected to permanent dewatering system if used in hydrostatic conditions.
3. All nails, screws etc used to hang the Aussie Skin below the water table must be non-rusting and sealed with a 3"x3" patch of Aussie Skin 550G bonded with Aussie Skin double sided tape.
4. See details AVM-550G-6000, AVM-550G-60002, AVM-550G-6004, and AVM-550G-6010 for Aussie Skin Lap Details

DETAIL #:  
0550G-1214AC

AVM System 550G/590

## Blind Side Waterproofing over Concrete/Shotcrete Aussie Clay Dual System - Hydrostatic

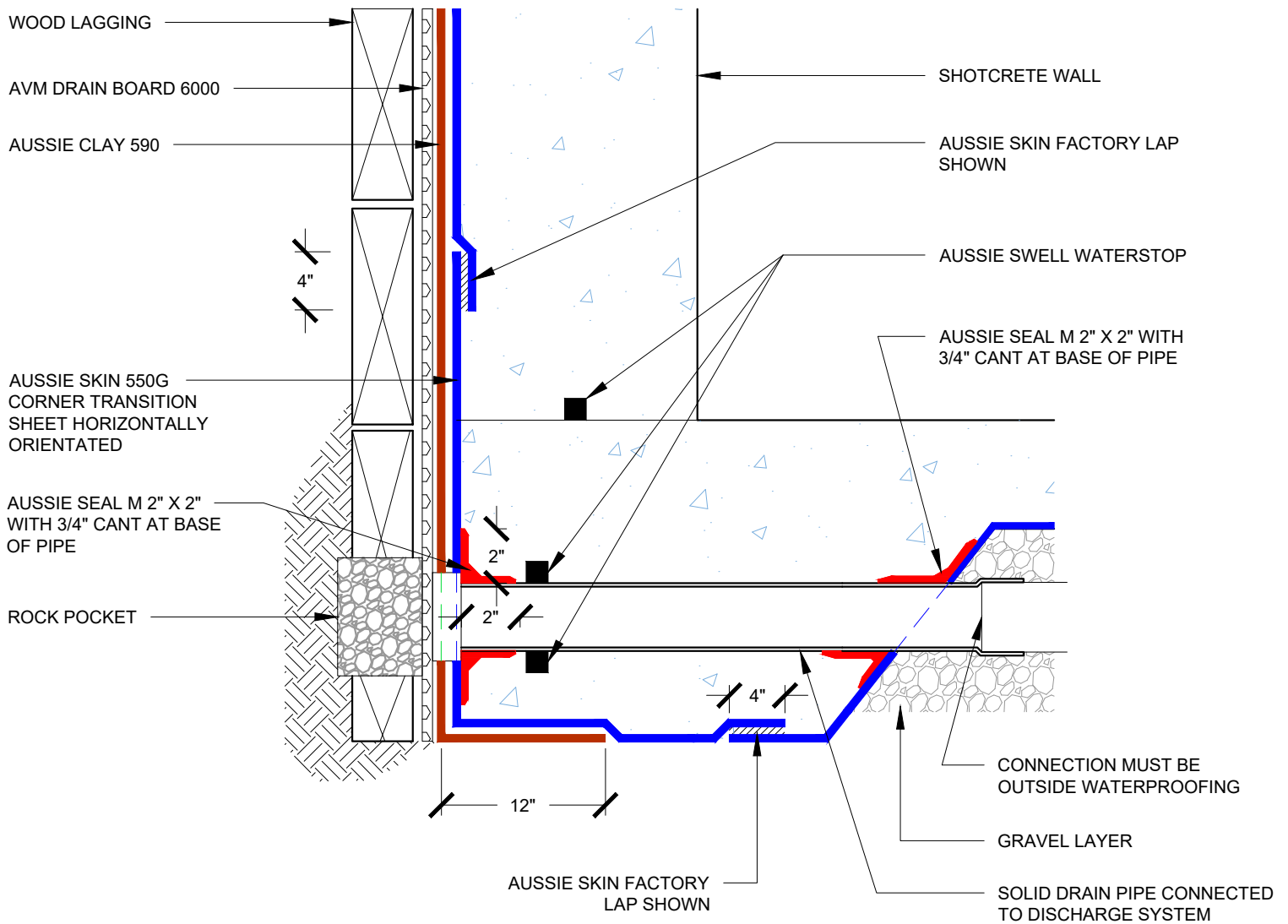


### Notes:

1. Aussie Skin 550G is a Heavy, Duty, Easy to Install, Puncture Resistant Sheet Waterproofing Membrane with added technologies creating excellent adhesion between the membrane and wet Concrete or Shot-Crete.
2. Drain board must be connected to permanent dewatering system if used in hydrostatic conditions.
3. All nails, screws etc used to hang the Aussie Skin below the water table must be non-rusting and sealed with a 3"x3" patch of Aussie Skin 550G bonded with Aussie Skin double sided tape.
4. See details AVM-550G-6000, AVM-550G-60002, AVM-550G-6004, and AVM-550G-6010 for Aussie Skin Lap Details

DETAIL #:  
**0550G-1220AC**  
AVM System 550G/590

## Lagging Wall with Rock Pocket Aussie Clay Dual System

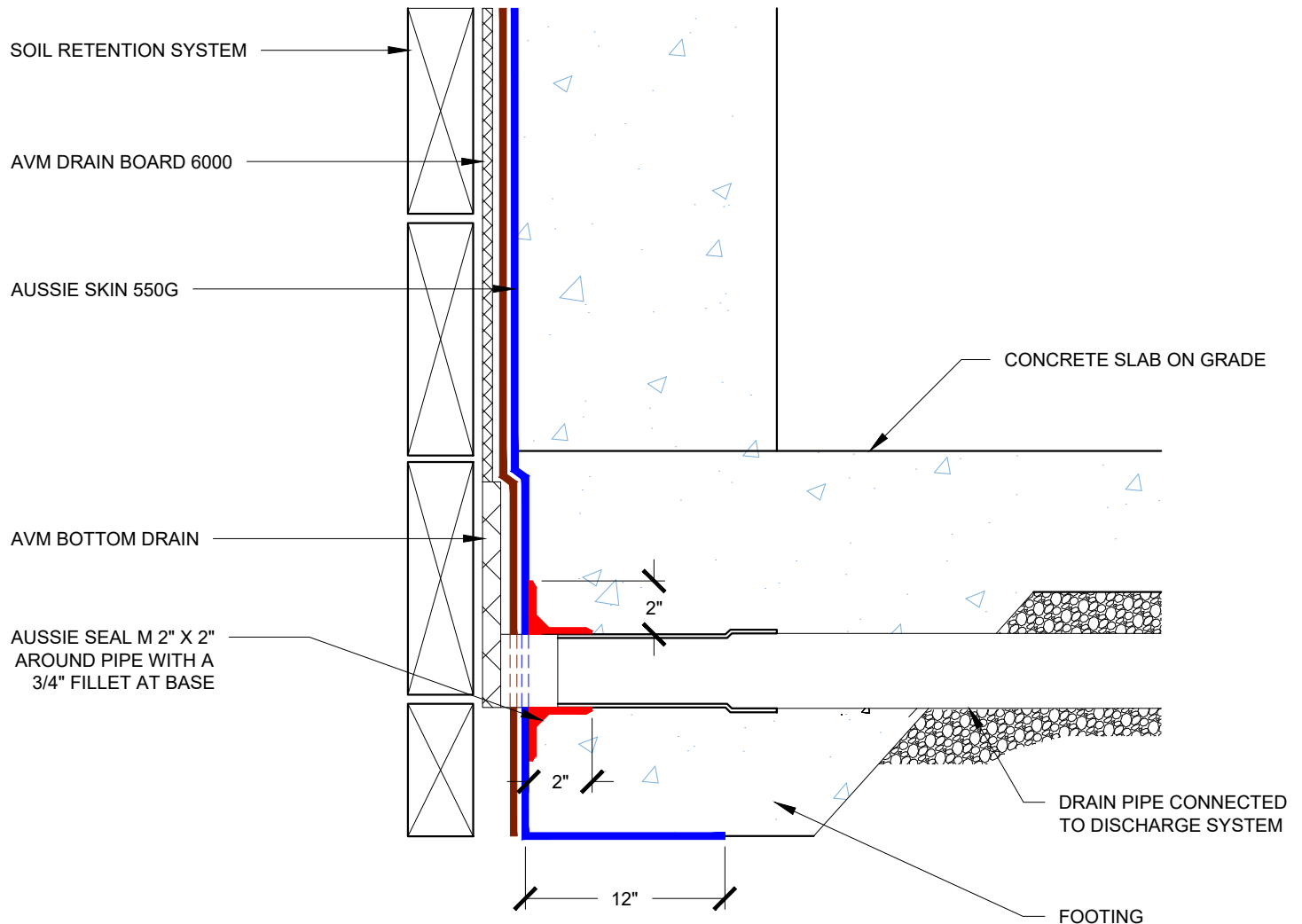


### Notes:

1. Aussie Skin 550G is a Heavy, Duty, Easy to Install, Puncture Resistant Sheet Waterproofing Membrane with added technologies creating excellent adhesion between the membrane and wet Concrete or Shot-Crete.
2. All surfaces must be clean and sound before installing the lap joints. (Remove excess sand before applying double sided tapSee details
3. See details AVM-550G-6000, AVM-550G-60002, AVM-550G-6004, and AVM-550G-6010 for Aussie Skin Lap Details
4. Drain board must be connected to a permanent dewatering system if used in hydrostatic conditions.

DETAIL #:  
0550G-1222AC  
AVM System 550G/590

## Raised Slab Walls Only (Non-Hydrostatic)

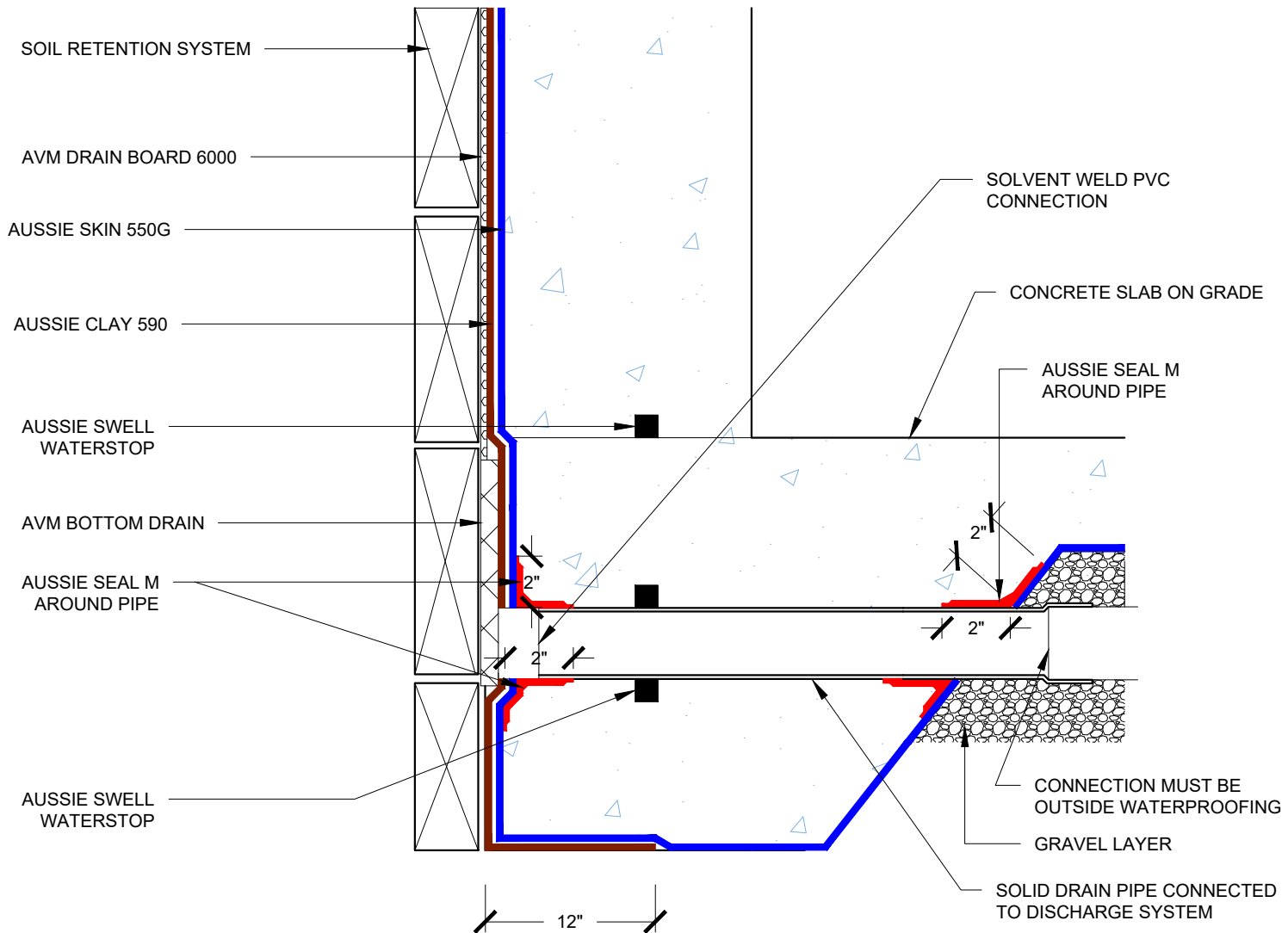


### Notes:

1. Aussie Skin 550G is a Heavy, Duty, Easy to Install, Puncture Resistant Sheet Waterproofing Membrane with added technologies creating excellent adhesion between the membrane and wet Concrete or Shot-Crete.
2. Aussie Clay & Aussie Clay PL are bentonite sheet membranes for waterproofing below-grade vertical and horizontal surfaces, including blindside and backfilled applications. Aussie Clay can be used with shotcrete or cast in place concrete in hydrostatic or non-hydrostatic conditions.
3. Fasten Aussie Clay with pneumatic staples or 1" washer-head fasteners placed maximum 24" on center
4. Install Aussie Clay and Aussie Clay PL with gray geotextile facing installer.
5. Overlap sheet edges 4" and stagger seams min 12"
6. See details AVM-550G-6000, AVM-550G-60002, AVM-550G-6004, and AVM-550G-6010 for Aussie Skin Lap Details

DETAIL #:  
0550G-1226AC  
AVM System 550G/590

## Raised Slab Aussie Clay Dual System - Non-Hydrostatic



### Notes:

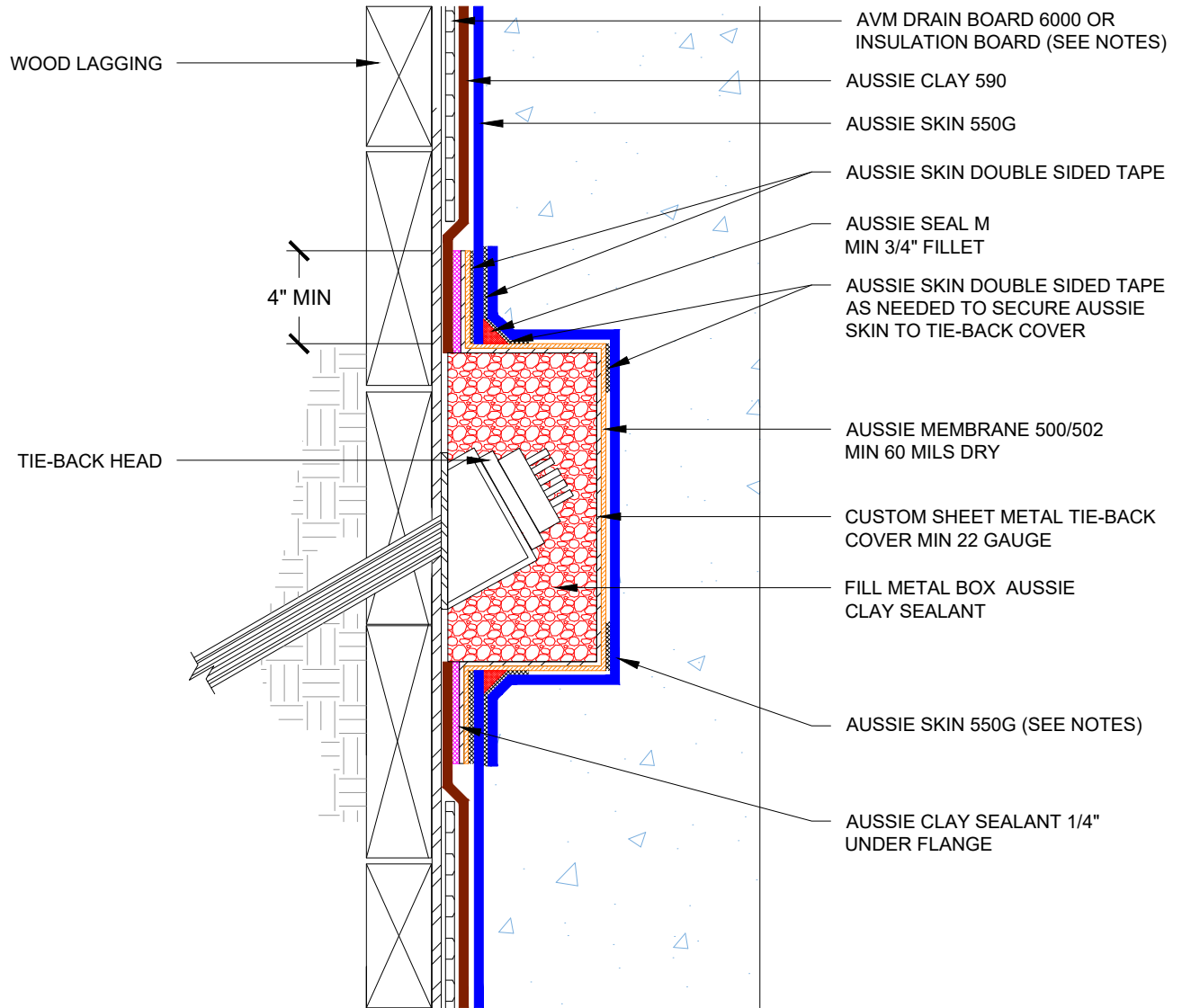
1. Aussie Skin 550G is a Heavy, Duty, Easy to Install, Puncture Resistant Sheet Waterproofing Membrane with added technologies creating excellent adhesion between the membrane and wet Concrete or Shot-Crete.
2. Aussie Clay & Aussie Clay PL are bentonite sheet membranes for waterproofing below-grade vertical and horizontal surfaces, including blindside and backfilled applications. Aussie Clay can be used with shotcrete or cast in place concrete in hydrostatic or non-hydrostatic conditions.
3. Fasten Aussie Clay with pneumatic staples or 1" washer-head fasteners placed maximum 24" on center
4. Install Aussie Clay and Aussie Clay PL with gray geotextile facing installer.
5. Overlap sheet edges 4" and stagger seams min 12"
6. See details AVM-550G-6000, AVM-550G-60002, AVM-550G-6004, and AVM-550G-6010 for Aussie Skin Lap Details

DETAIL #:  
AVM-550G-1530AC  
Aussie Skin 550G/590

# Metal Tie-Back Cover Aussie Clay Dual System



Only Use if AVM's Standard Tie-Back Cover Cannot be Used



## Notes:

1. Aussie Skin 550G is a Heavy, Duty, Easy to Install, Puncture Resistant Sheet Waterproofing Membrane with added technologies creating excellent adhesion between the membrane and wet Concrete or Shot-Crete.
2. Contact AVM if no drain board or protection board is specified.
3. Relief cuts may be needed to form Aussie Skin around tie-back cover. All relief cuts should be covered with Sanded Tape.
4. All nails, screws etc used to hang the Aussie Skin above the water table must be non-rusting and sealed with AVM approved Sealant.
5. Drain board must be connected to a permanent dewatering system if used in hydrostatic conditions

AVM Industries, Inc.  
8245 Remmet Ave, Canoga Park, CA 91304

Quality Waterproofing Products

888.414.1041 818.888.0050  
www.avmindustries.com

FILE NAME: 0550G-1530AC

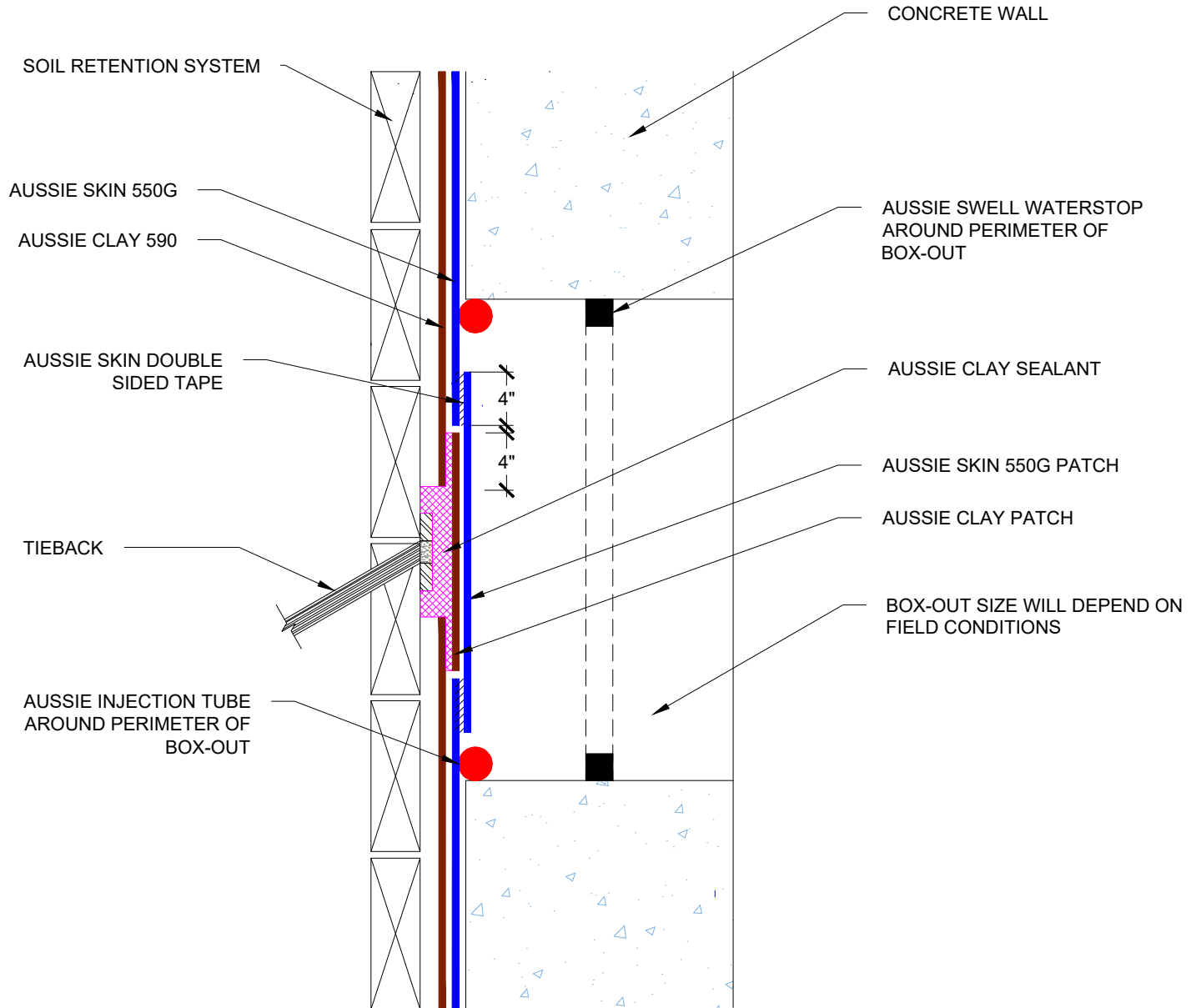
Protected by Copyright - AVM Industries, Inc. Revision Date 1/21/2020

DETAIL #:

**AVM-550G-1531AC**

Aussie Skin550G/590

## Detensioned Tie-Back Box-out Aussie Clay Dual System



### NOTES:

1. Aussie Skin 550G is a Heavy, Duty, Easy to Install, Puncture Resistant Sheet Waterproofing Membrane with added technologies creating excellent adhesion between the membrane and wet Concrete or Shot-Crete.
2. All nails, screws etc used to hang the Aussie Skin above the water table must be non-rusting and sealed with AVM approved Sealant.



DETAIL #:

0550G-1532AC

AVM System 550G/590

## Tie-Back Cover

## Aussie Clay Dual System



4"

4"

4"

Notes:

1. Aussie Skin 550G is a Heavy, Duty, Easy to Install, Puncture Resistant Sheet Waterproofing Membrane with added technologies creating excellent adhesion between the membrane and wet Concrete or Shot-Crete.
2. Aussie Clay & Aussie Clay PL are bentonite sheet membranes for waterproofing below-grade vertical and horizontal surfaces, including blindside and backfilled applications. Aussie Clay can be used with shotcrete or cast in place concrete in hydrostatic or non-hydrostatic conditions.
3. Fasten Aussie Clay with pneumatic staples or 1" washer-head fasteners placed maximum 24" on center
4. Install Aussie Clay and Aussie Clay PL with gray geotextile facing installer.
5. Overlap sheet edges 4" and stagger seams min 12"
6. AVM tie-back covers are available in 6" and 8" domes
7. See details AVM-550G-6000, AVM-550G-60002, AVM-550G-6004, and AVM-550G-6010 for Aussie Skin Lap Details

**AVM Industries, Inc.**  
8245 Remmet Ave, Canoga Park, CA 91304

## Quality Waterproofing Products

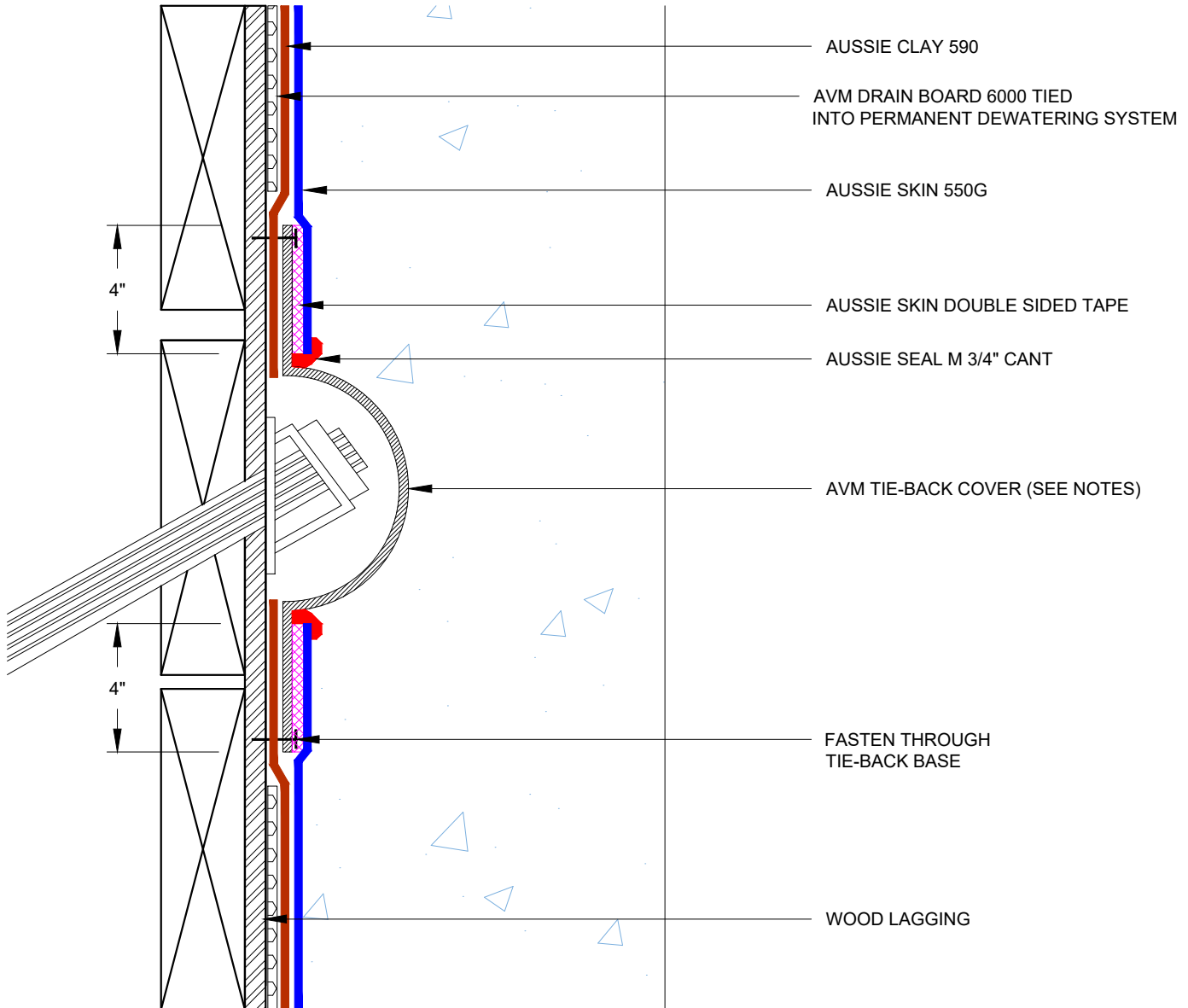
888.414.1041 818.888.0050  
www.avmindustries.com

FILE NAME: 0550G-1532AC

Protected by Copyright - AVM Industries, Inc. Revision Date 1/21/2020

DETAIL #:  
0550G-1533AC  
AVM System 550G/590

## Tie-Back Cover Aussie Clay Dual System



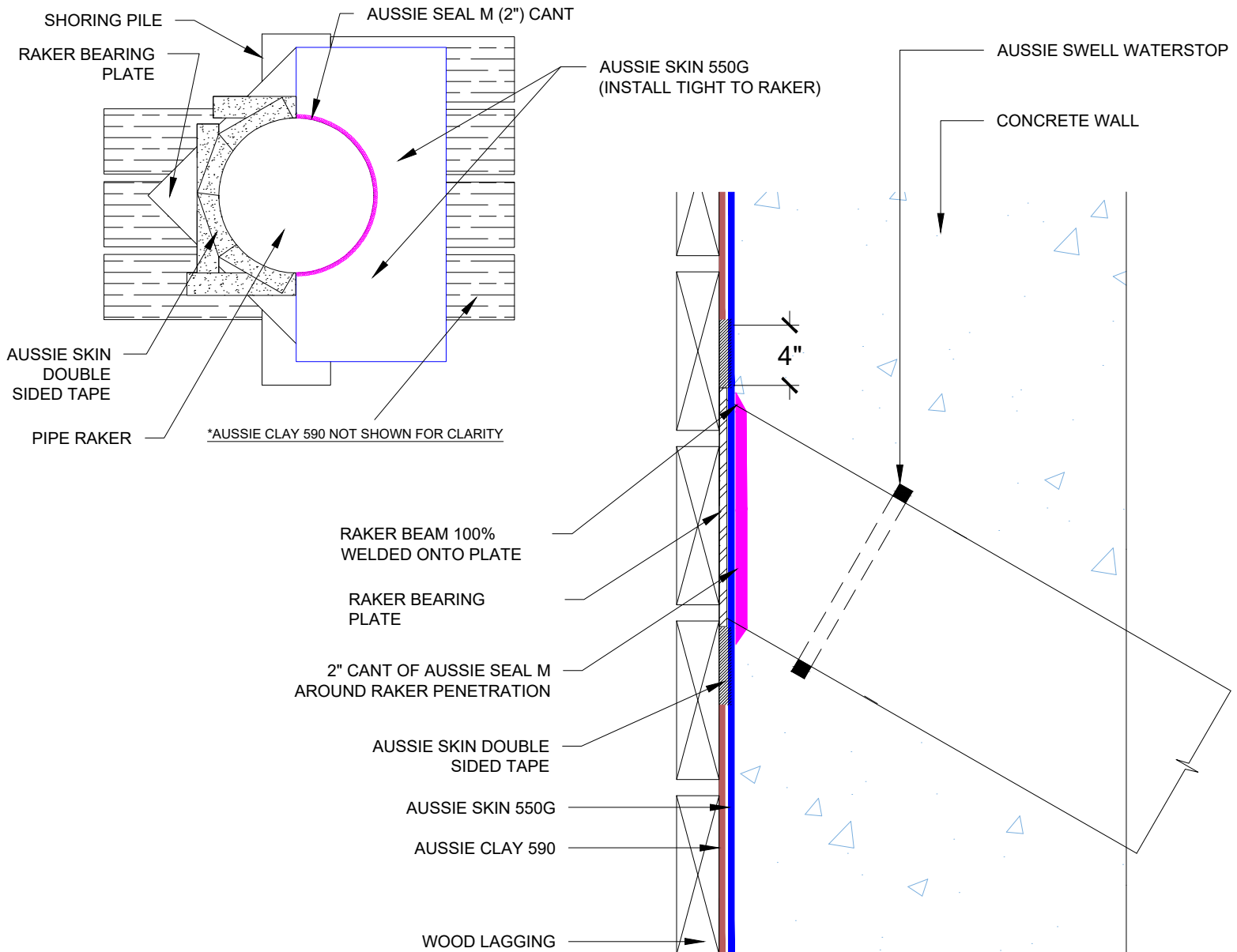
### Notes:

1. Aussie Skin 550G is a Heavy, Duty, Easy to Install, Puncture Resistant Sheet Waterproofing Membrane with added technologies creating excellent adhesion between the membrane and wet Concrete or Shot-Crete.
2. Aussie Clay & Aussie Clay PL are bentonite sheet membranes for waterproofing below-grade vertical and horizontal surfaces, including blindside and backfilled applications. Aussie Clay can be used with shotcrete or cast in place concrete in hydrostatic or non-hydrostatic conditions.
3. Fasten Aussie Clay with pneumatic staples or 1" washer-head fasteners placed maximum 24" on center
4. Install Aussie Clay and Aussie Clay PL with gray geotextile facing installer.
5. Overlap sheet edges 4" and stagger seams min 12"
6. AVM tie-back covers are available in 6" and 8" domes
7. See details AVM-550G-6000, AVM-550G-60002, AVM-550G-6004, and AVM-550G-6010 for Aussie Skin Lap Details

DETAIL #:  
0550G-1536AC

Aussie Skin 550G/590

## Raker Beam Detail Aussie Clay Dual System

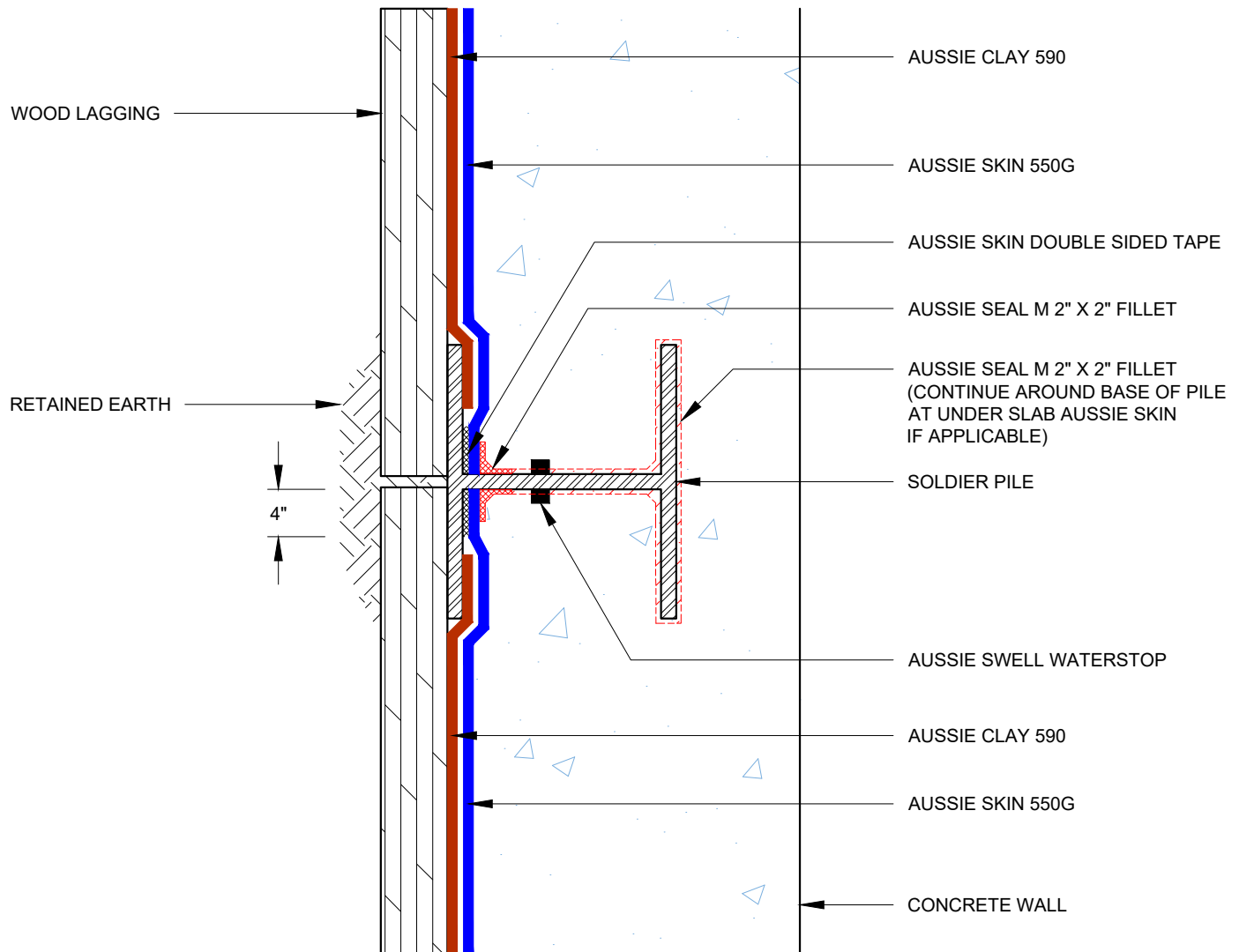


### Notes:

1. Aussie Skin 550G is a Heavy, Duty, Easy to Install, Puncture Resistant Sheet Waterproofing Membrane with added technologies creating excellent adhesion between the membrane and wet Concrete or Shot-Crete.
2. Steel must be clean and rust free prior to applying Aussie Seal M.

DETAIL #:  
0550G-1540AC  
AVM System 550G/590

## Back Lagged Soldier Pile Aussie Clay Dual System



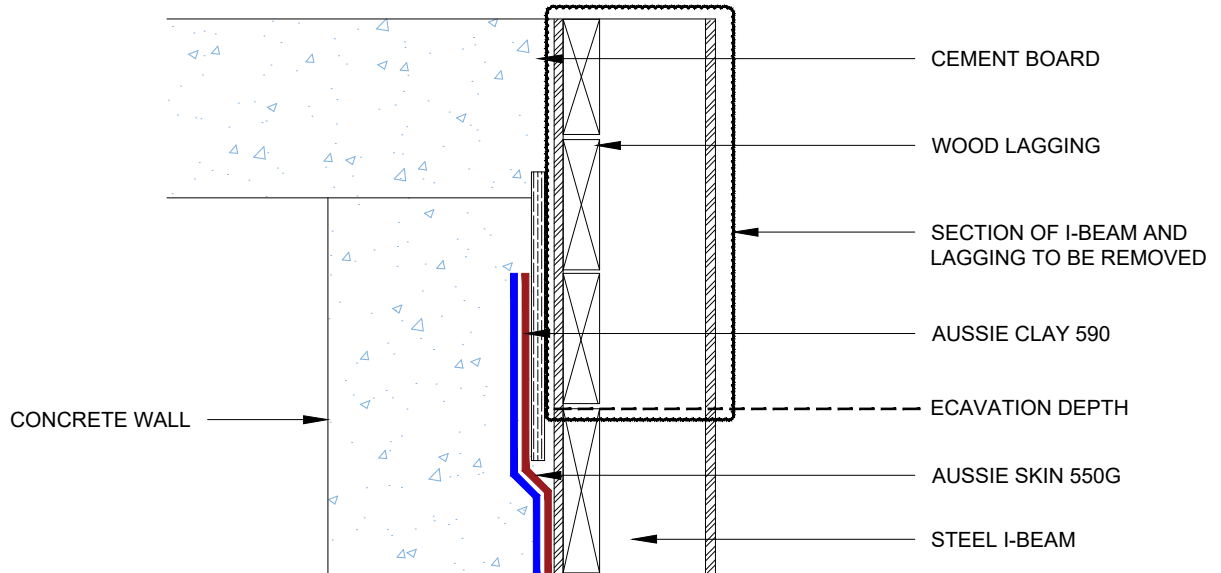
### Notes:

1. Aussie Skin 550G is a Heavy, Duty, Easy to Install, Puncture Resistant Sheet Waterproofing Membrane with added technologies creating excellent adhesion between the membrane and wet Concrete or Shot-Crete.
2. Aussie Clay & Aussie Clay PL are bentonite sheet membranes for waterproofing below-grade vertical and horizontal surfaces, including blindside and backfilled applications. Aussie Clay can be used with shotcrete or cast in place concrete in hydrostatic or non-hydrostatic conditions.
3. Fasten Aussie Clay with pneumatic staples or 1" washer-head fasteners placed maximum 24" on center
4. Install Aussie Clay and Aussie Clay PL with gray geotextile facing installer.

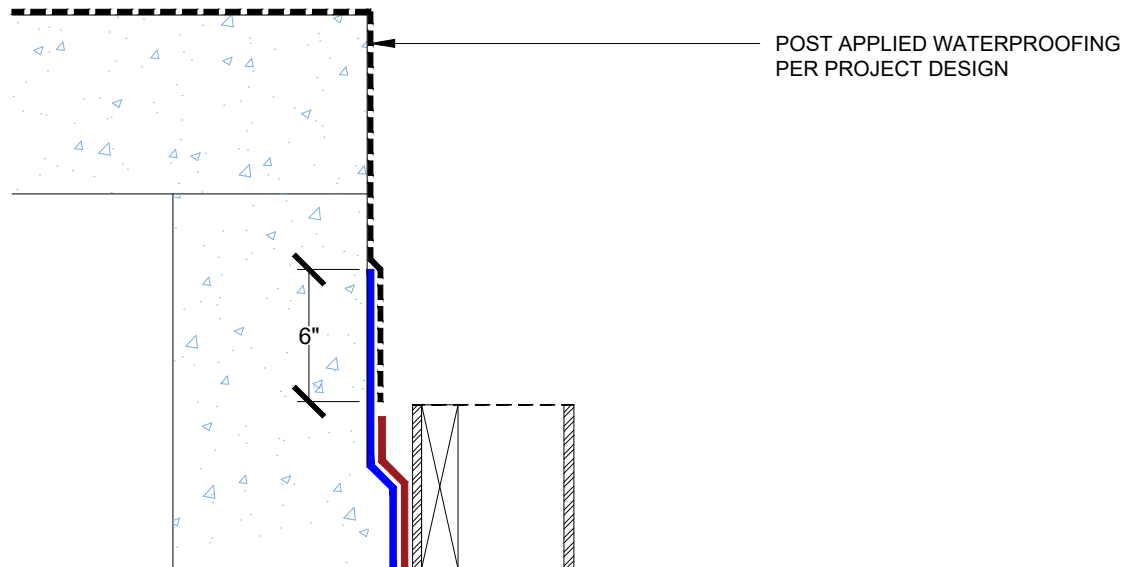
## Lagging Board Removal at Grade Aussie Clay Dual System



### STEP 1



### STEP 2



#### Notes:

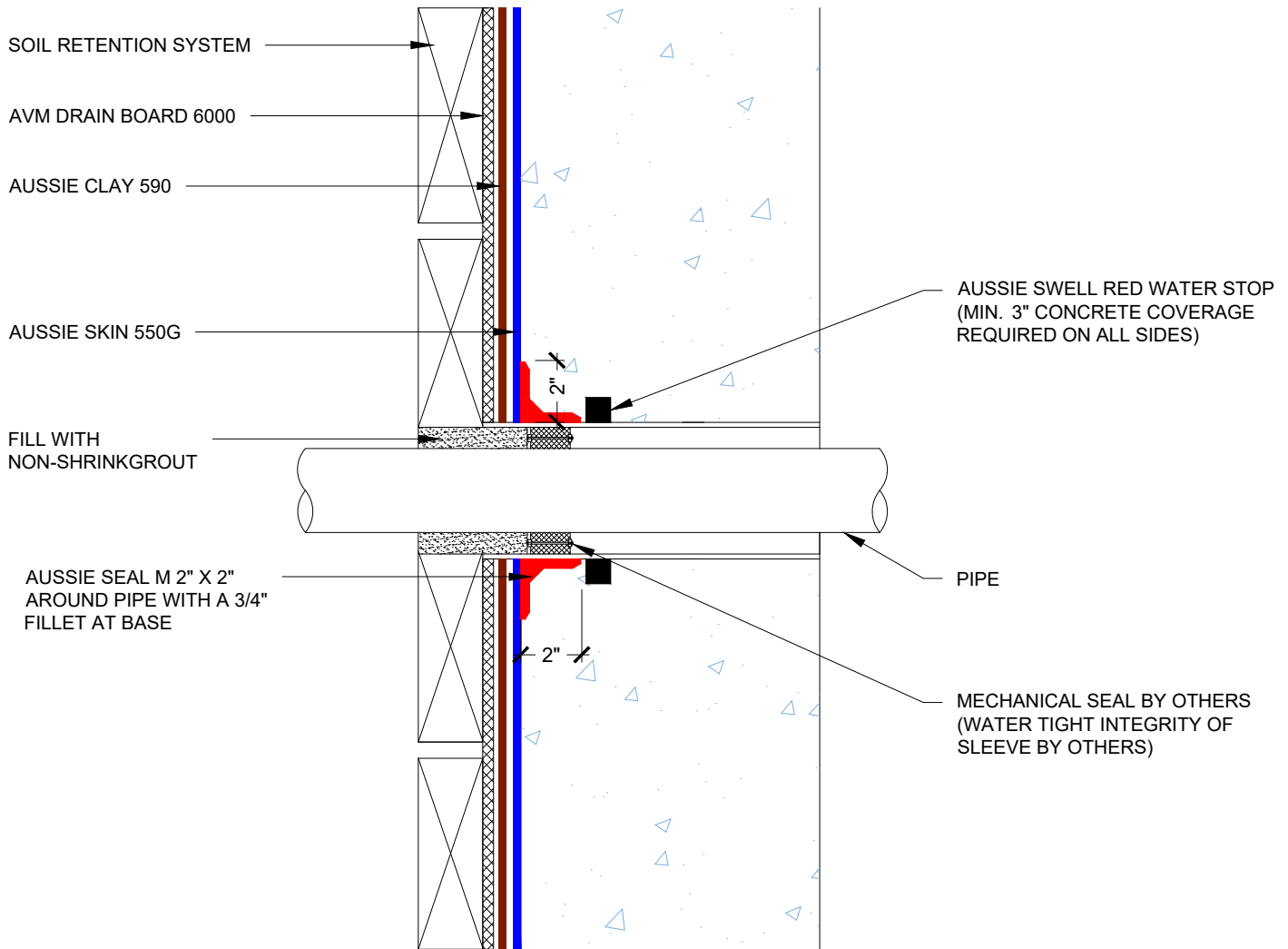
1. Aussie Skin 550G is a Heavy, Duty, Easy to Install, Puncture Resistant Sheet Waterproofing Membrane with added technologies creating excellent adhesion between the membrane and wet Concrete or Shot-Crete.

DETAIL #:

**AVM-550G-4005AC**

AVM System 550G/590

## Sleeved Pipe Penetration Aussie Clay Dual System



### NOTES:

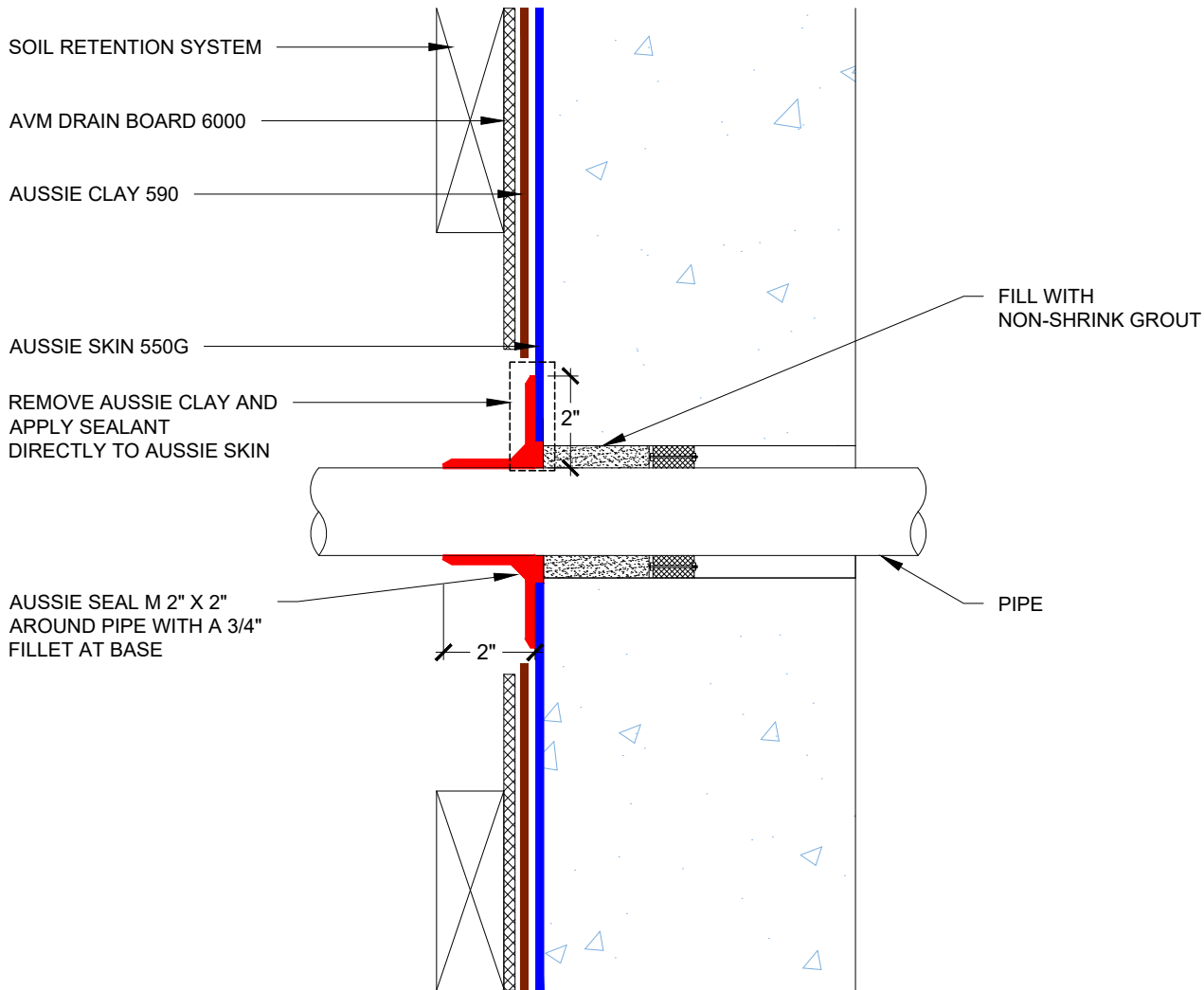
1. Aussie Skin 550G is a Heavy, Duty, Easy to Install, Puncture Resistant Sheet Waterproofing Membrane with added technologies creating excellent adhesion between the membrane and wet Concrete or Shot-Crete.
2. PVC or metal pipe must be clean and free of foreign matter that would prevent Aussie Seal M adhesion.
3. Contact AVM if no drain board or protection board is specified.
4. Drain board must be connected to a permanent dewatering system if used in hydrostatic conditions.
5. All nails, screws etc used to hang the Aussie Skin below the water table must be non-rusting and sealed with a 3"x3" patch of Aussie Skin 550G bonded with Aussie Skin double sided tape.

DETAIL #:

**AVM-550G-4010AC**

AVM System 550G/590

## Cored Penetration Sealant on HDPE Side Aussie Clay Dual System

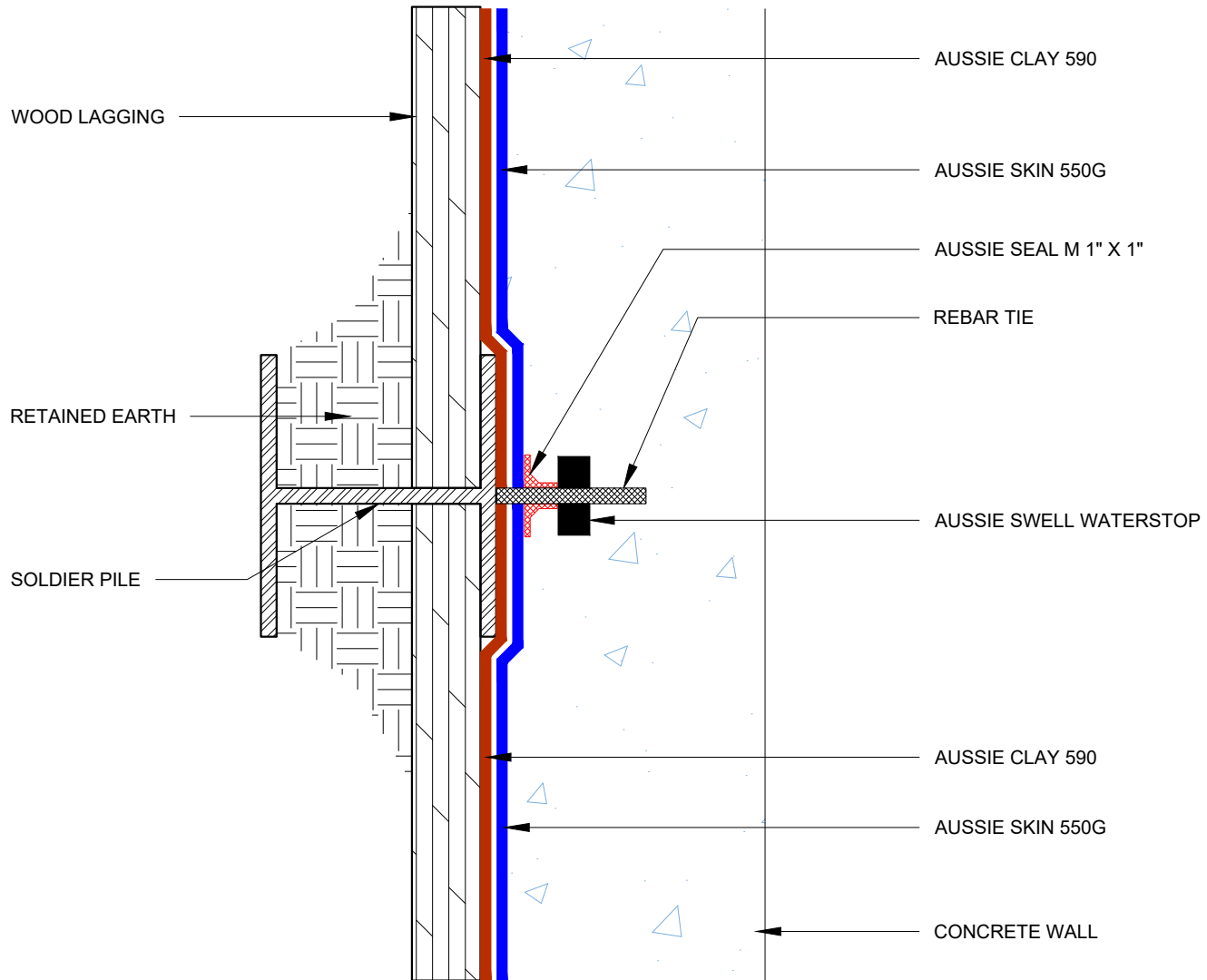


### NOTES:

1. Aussie Skin 550G is a Heavy, Duty, Easy to Install, Puncture Resistant Sheet Waterproofing Membrane with added technologies creating excellent adhesion between the membrane and wet Concrete or Shot-Crete.
2. PVC or metal pipe must be clean and free of foreign matter that would prevent Aussie Seal M adhesion.
3. Contact AVM if no drain board or protection board is specified.
4. Drain board must be connected to a permanent dewatering system if used in hydrostatic conditions
5. All nails, screws etc used to hang the Aussie Skin below the water table must be non-rusting and sealed with a 3"x3" patch of Aussie Skin 550G bonded with Aussie Skin double sided tape.

DETAIL #:  
**0550G-4100AC**  
AVM System 550G/590

## Rebar Tie Aussie Clay Dual System



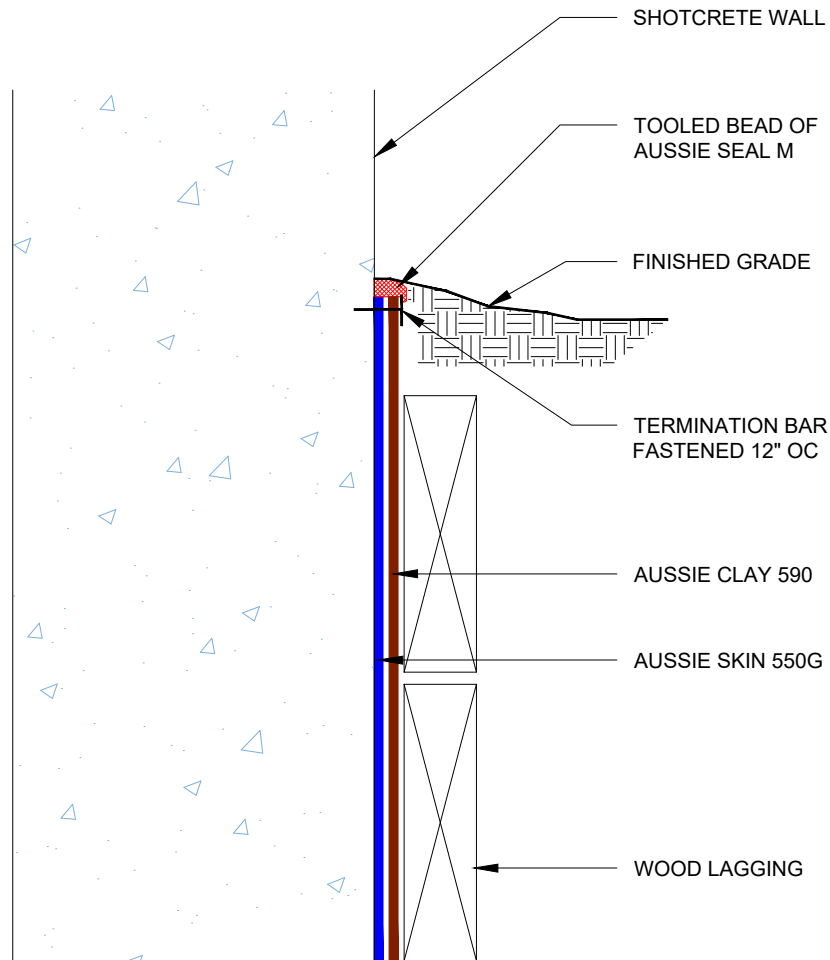
### Notes:

1. Aussie Skin 550G is a Heavy, Duty, Easy to Install, Puncture Resistant Sheet Waterproofing Membrane with added technologies creating excellent adhesion between the membrane and wet Concrete or Shot-Crete.
2. Aussie Clay & Aussie Clay PL are bentonite sheet membranes for waterproofing below-grade vertical and horizontal surfaces, including blindside and backfilled applications. Aussie Clay can be used with shotcrete or cast in place concrete in hydrostatic or non-hydrostatic conditions.
3. Fasten Aussie Clay with pneumatic staples or 1" washer-head fasteners placed maximum 24" on center
4. Install Aussie Clay and Aussie Clay PL with gray geotextile facing installer.



DETAIL #:  
**0550G-7502AC**  
AVM System 550G/590

## Grade Termination - Option 1 Aussie Clay Dual System

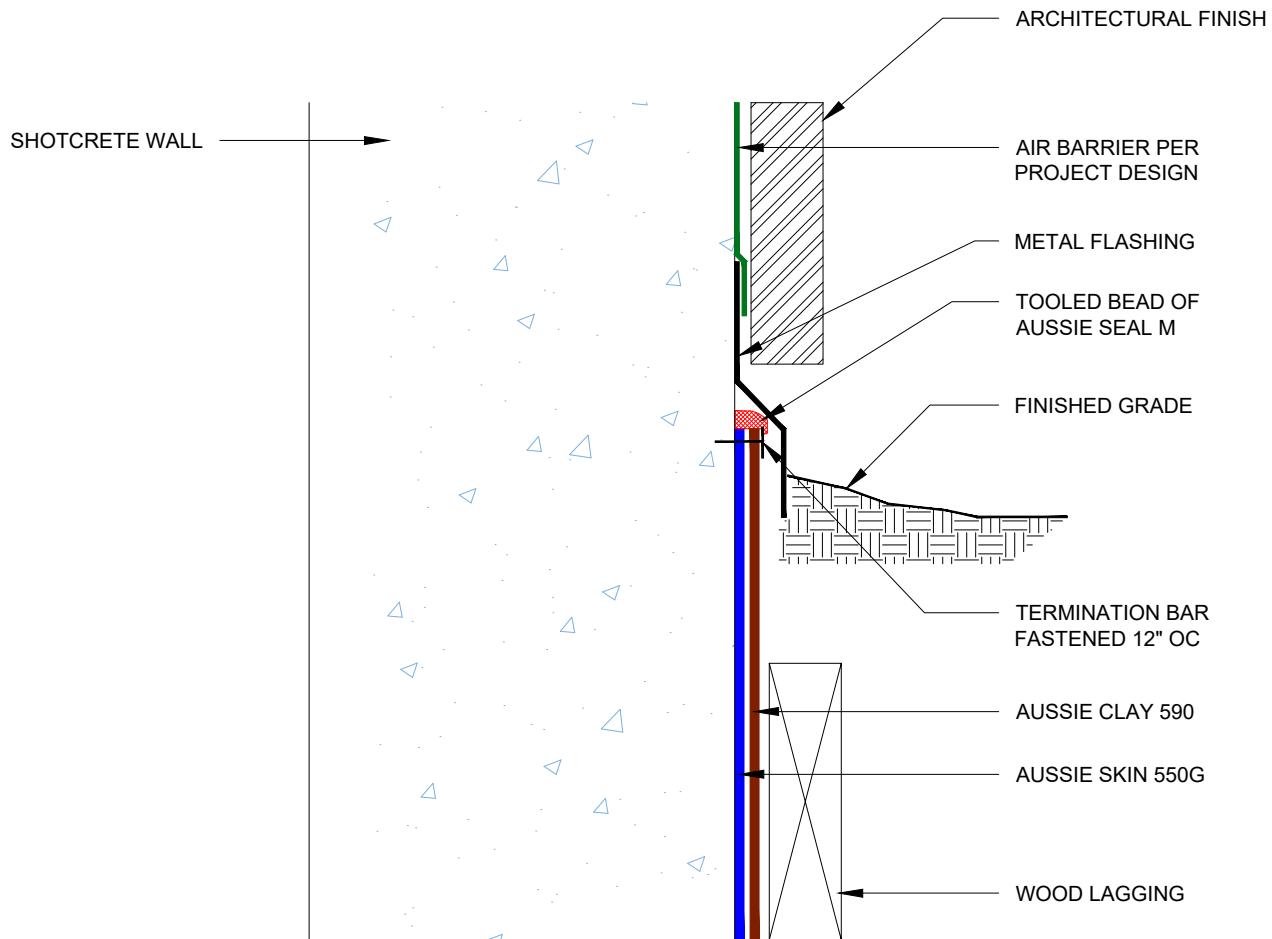


### Notes:

1. Aussie Clay & Aussie Clay PL are bentonite sheet membranes for waterproofing below-grade vertical and horizontal surfaces, including blind side and backfilled applications. Aussie Clay can be used with shotcrete or cast in place concrete in hydrostatic or non-hydrostatic conditions.
2. Fasten Aussie Clay with washer-head fasteners placed maximum 24" on center
3. Install Aussie Clay with gray geotextile against concrete. Install Aussie Clay PL with poly liner facing installer
4. Overlap sheet edges 4" and stagger seams min 12"

DETAIL #:  
0550G-7505AC  
AVM System 550G/590

## Grade Termination - Option 2 Aussie Clay Dual System



### Notes:

1. Aussie Clay & Aussie Clay PL are bentonite sheet membranes for waterproofing below-grade vertical and horizontal surfaces, including blind side and backfilled applications. Aussie Clay can be used with shotcrete or cast in place concrete in hydrostatic or non-hydrostatic conditions.
2. Fasten Aussie Clay with washer-head fasteners placed maximum 24" on center
3. Install Aussie Clay with gray geotextile against concrete. Install Aussie Clay PL with poly liner facing installer
4. Overlap sheet edges 4" and stagger seams min 12"