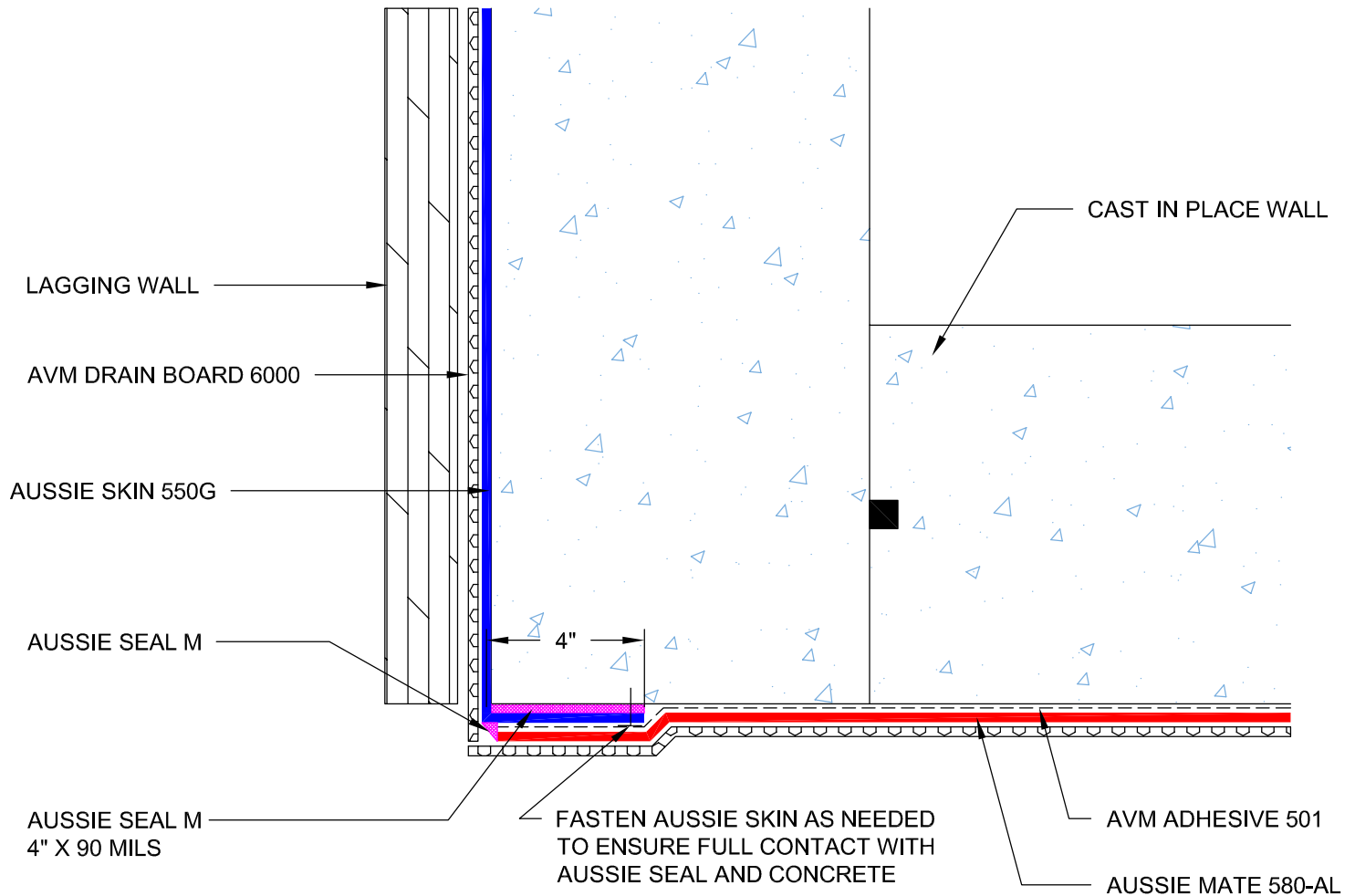


DETAIL #:
0550G-7010
AVM System 550G

Aussie Skin Lagging Wall to Aussie Mate Free Standing Wall Transition



PLAN VIEW

Notes:

1. Aussie Skin 550G is a Heavy, Duty, Easy to Install, Puncture Resistant Sheet Waterproofing Membrane with added technologies creating excellent adhesion between the membrane and wet Concrete or Shot-Crete.
2. Aussie Mate 580-AL is an LARR approved Waterproofing membrane and Methane Barrier.
3. Aussie Mate 580-AL is a UV stable, 60-mil heavy duty bituminous sheet membrane with aluminum protection layer for Below-Grade waterproofing applications. Aussie Mate 580-AL may also be used as a methane and/or vapor barrier under horizontal slabs on grade.