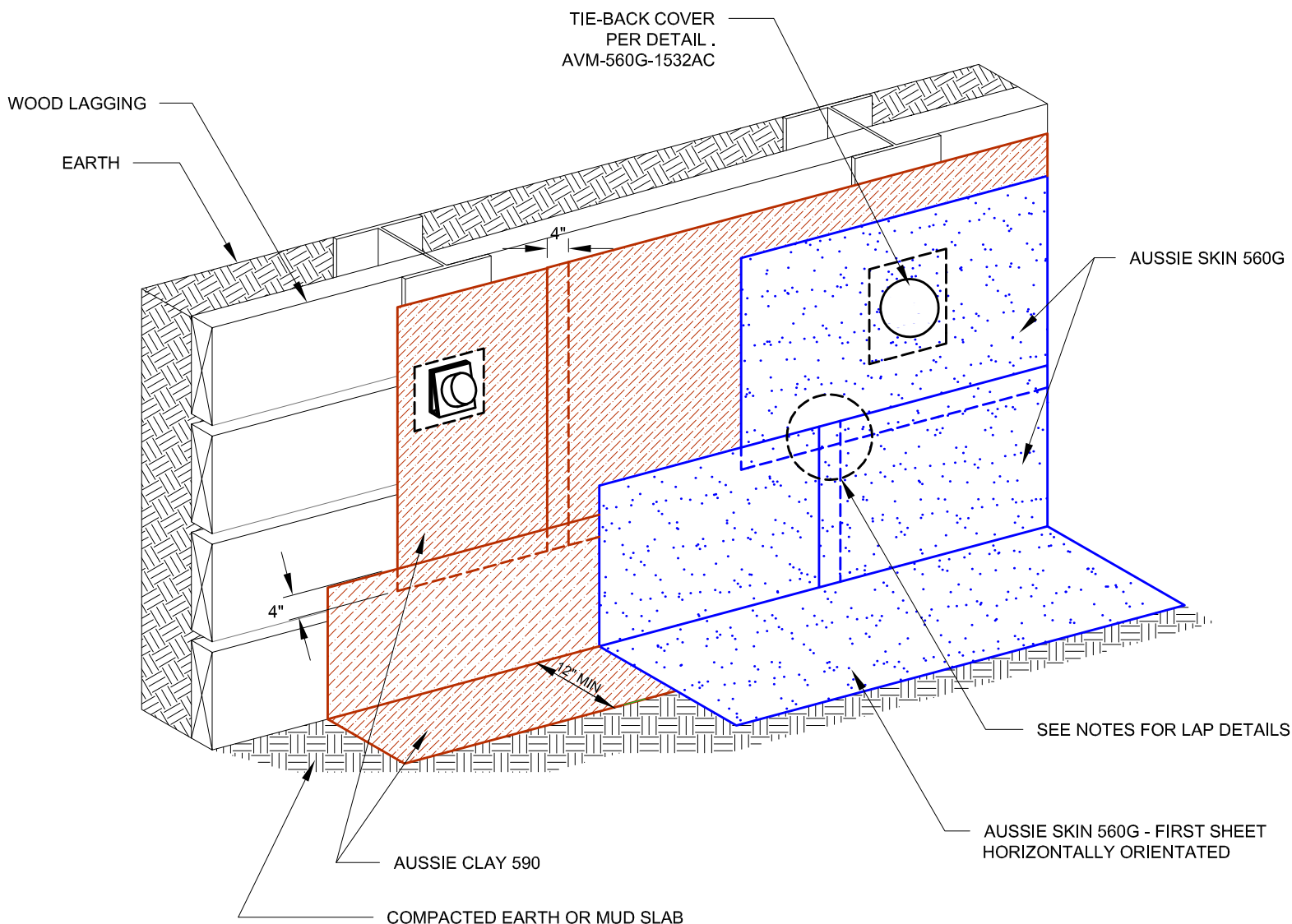


DETAIL #:
0560G-1200AC
AVM System 560G/590

Typical Lagging Wall Aussie Clay Dual System



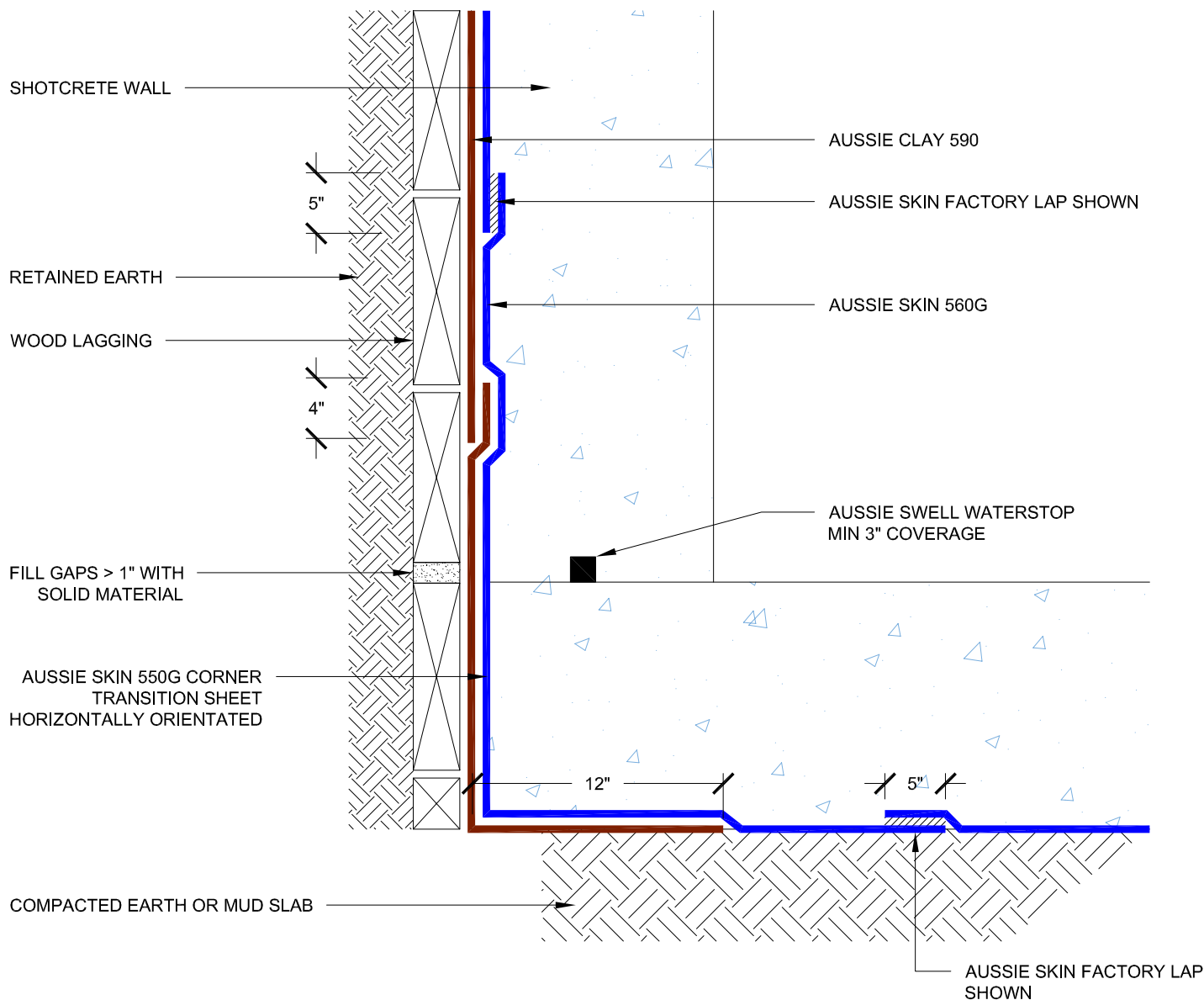
Notes:

1. Aussie Skin 560G is Methane and Shot-Crete approved Heavy, Duty, Easy to Install, Puncture Resistant Sheet Waterproofing Membrane with added technologies creating excellent adhesion between the membrane and wet Concrete or Shot-Crete.
2. Aussie Clay & Aussie Clay PL are bentonite sheet membranes for waterproofing below-grade vertical and horizontal surfaces, including blindside and backfilled applications. Aussie Clay can be used with shotcrete or cast in place concrete in hydrostatic or non-hydrostatic conditions.
3. Fasten Aussie Clay with pneumatic staples or 1" washer-head fasteners placed maximum 24" on center
4. Install Aussie Clay and Aussie Clay PL with gray geotextile facing installer.
5. Overlap sheet edges 4" and stagger seams min 12"
6. See details AVM-560G-6000, AVM-560G-6004, and AVM-560G-6010 for Aussie Skin Lap Details

DETAIL #:
0560G-1212AC

AVM System 560/590

Blind Side Waterproofing over Lagging Aussie Clay Dual System - Hydrostatic

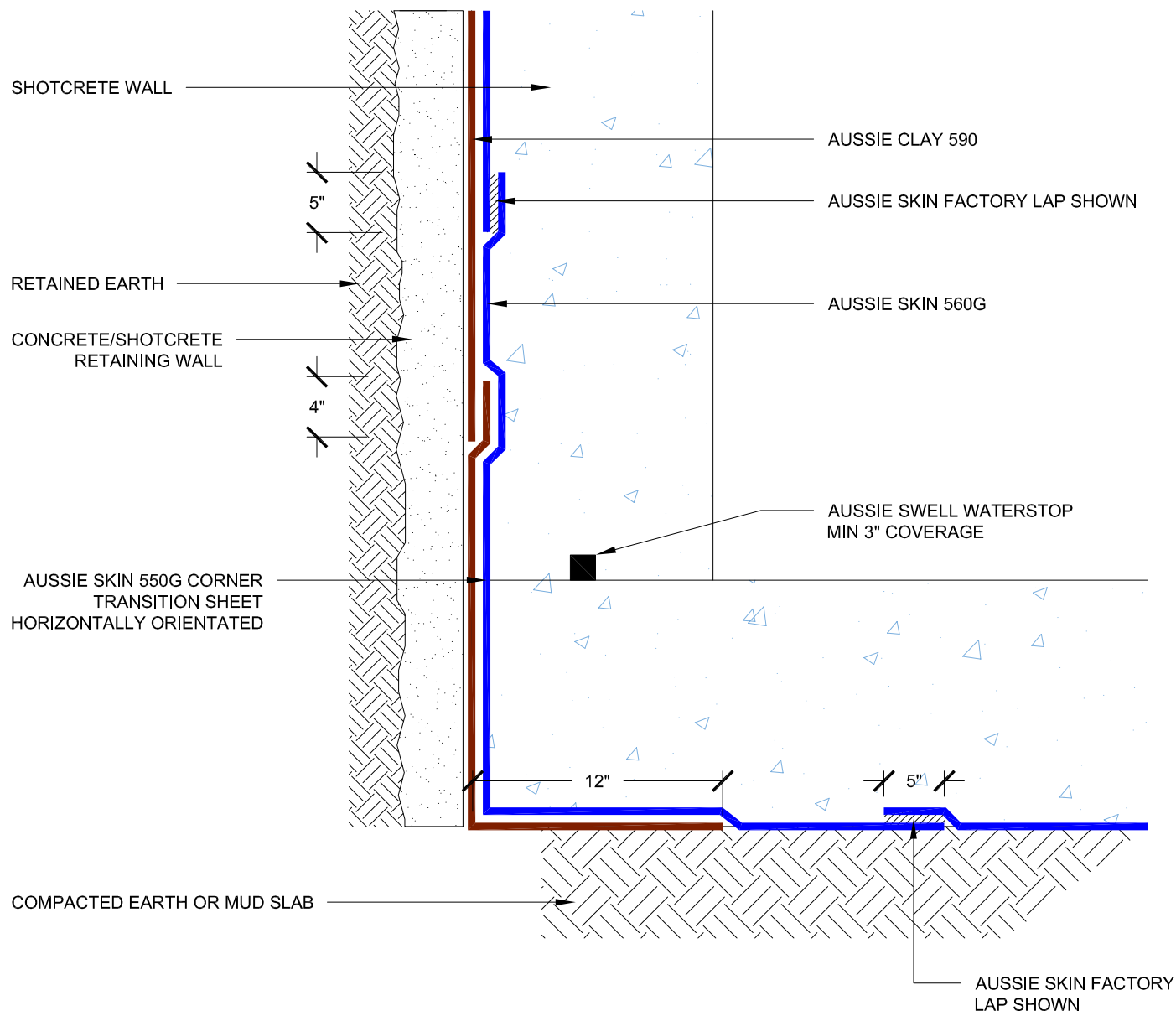


Notes:

1. Aussie Skin 560G is Methane and Shot-Crete approved Heavy, Duty, Easy to Install, Puncture Resistant Sheet Waterproofing Membrane with added technologies creating excellent adhesion between the membrane and wet Concrete or Shot-Crete.
2. Aussie Clay & Aussie Clay PL are bentonite sheet membranes for waterproofing below-grade vertical and horizontal surfaces, including blindside and backfilled applications. Aussie Clay can be used with shotcrete or cast in place concrete in hydrostatic or non-hydrostatic conditions.
3. Fasten Aussie Clay with pneumatic staples or 1" washer-head fasteners placed maximum 24" on center
4. Install Aussie Clay and Aussie Clay PL with gray geotextile facing installer.
5. Overlap sheet edges 4" and stagger seams min 12"
6. See details AVM-560G-6000, AVM-560G-6004, and AVM-560G-6010 for Aussie Skin Lap Details

DETAIL #:
0560G-1214AC
AVM System 560G/590

Blind Side Waterproofing over Concrete/Shotcrete Aussie Clay Dual System - Hydrostatic

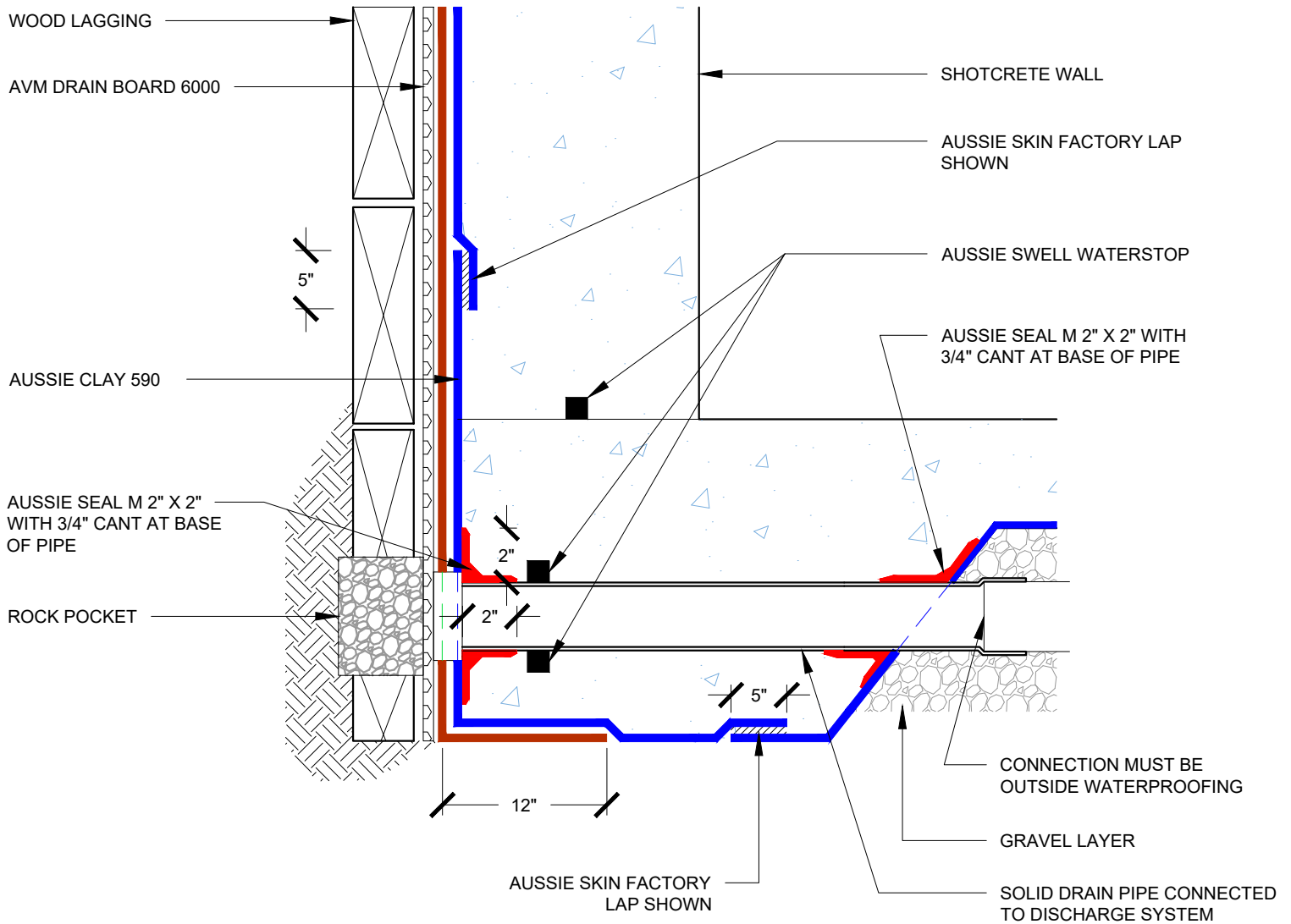


Notes:

1. Aussie Skin 560G is Methane and Shot-Crete approved Heavy, Duty, Easy to Install, Puncture Resistant Sheet Waterproofing Membrane with added technologies creating excellent adhesion between the membrane and wet Concrete or Shot-Crete.
2. Aussie Clay & Aussie Clay PL are bentonite sheet membranes for waterproofing below-grade vertical and horizontal surfaces, including blindside and backfilled applications. Aussie Clay can be used with shotcrete or cast in place concrete in hydrostatic or non-hydrostatic conditions.
3. Fasten Aussie Clay with pneumatic staples or 1" washer-head fasteners placed maximum 24" on center
4. Install Aussie Clay and Aussie Clay PL with gray geotextile facing installer.
5. Overlap sheet edges 4" and stagger seams min 12"
6. See details AVM-560G-6000, AVM-560G-6004, and AVM-560G-6010 for Aussie Skin Lap Details

DETAIL #:
0560G-1220AC
AVM System 550G/590

Lagging Wall with Rock Pocket Aussie Clay Dual System

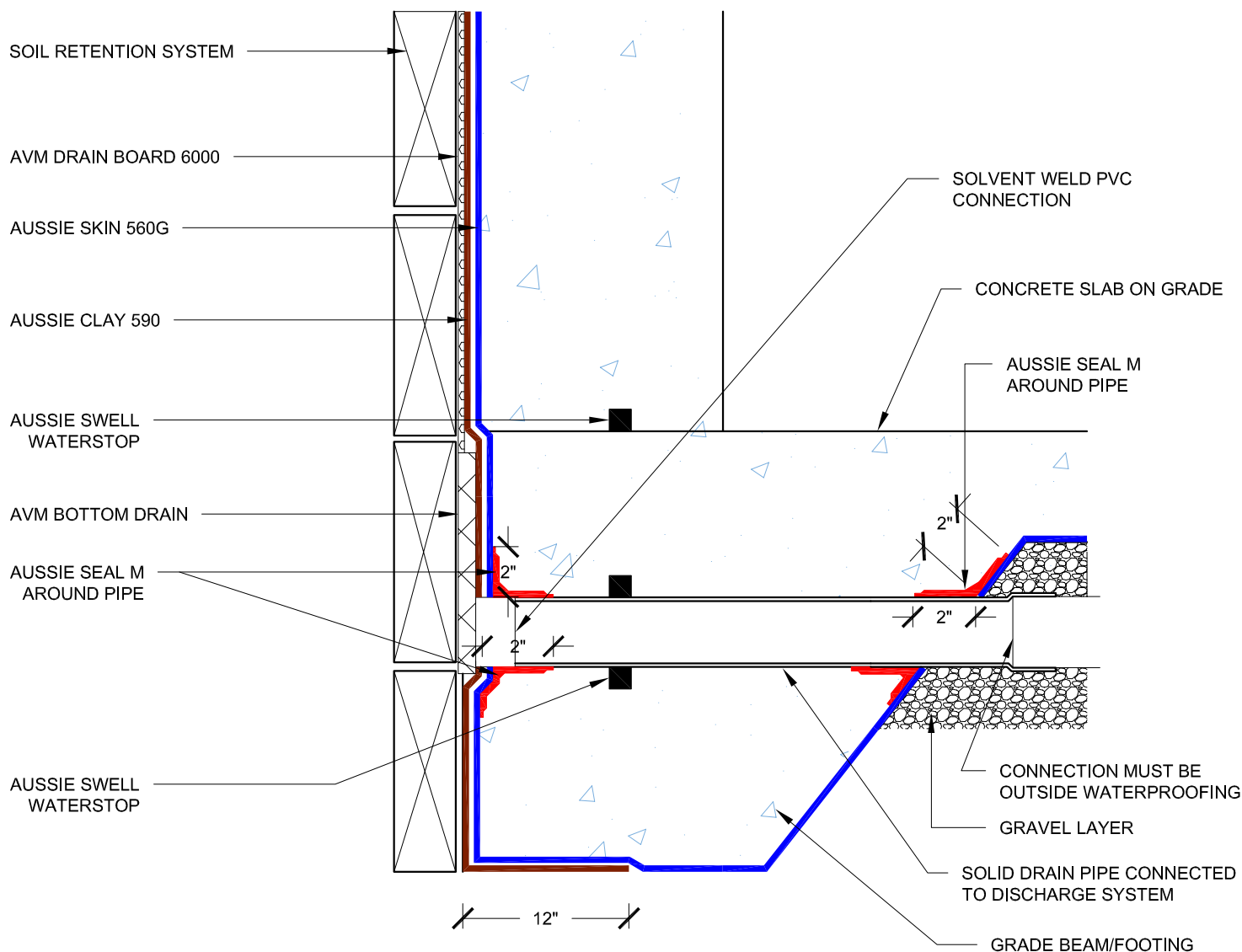


Notes:

1. Aussie Skin 560G is Methane and Shot-Crete approved Heavy, Duty, Easy to Install, Puncture Resistant Sheet Waterproofing Membrane with added technologies creating excellent adhesion between the membrane and wet Concrete or Shot-Crete.
2. All surfaces must be clean and sound before installing the lap joints. (Remove excess sand before applying double sided tapSee details
3. See details AVM-560G-6000, AVM-560G-6004, and AVM-560G-6010 for Aussie Skin Lap Details
4. Drain board must be connected to a permanent dewatering system if used in hydrostatic conditions.

DETAIL #:
0560G-1226AC
AVM System 560G/590

Raised Slab Aussie Clay Dual System - Non-Hydrostatic



Notes:

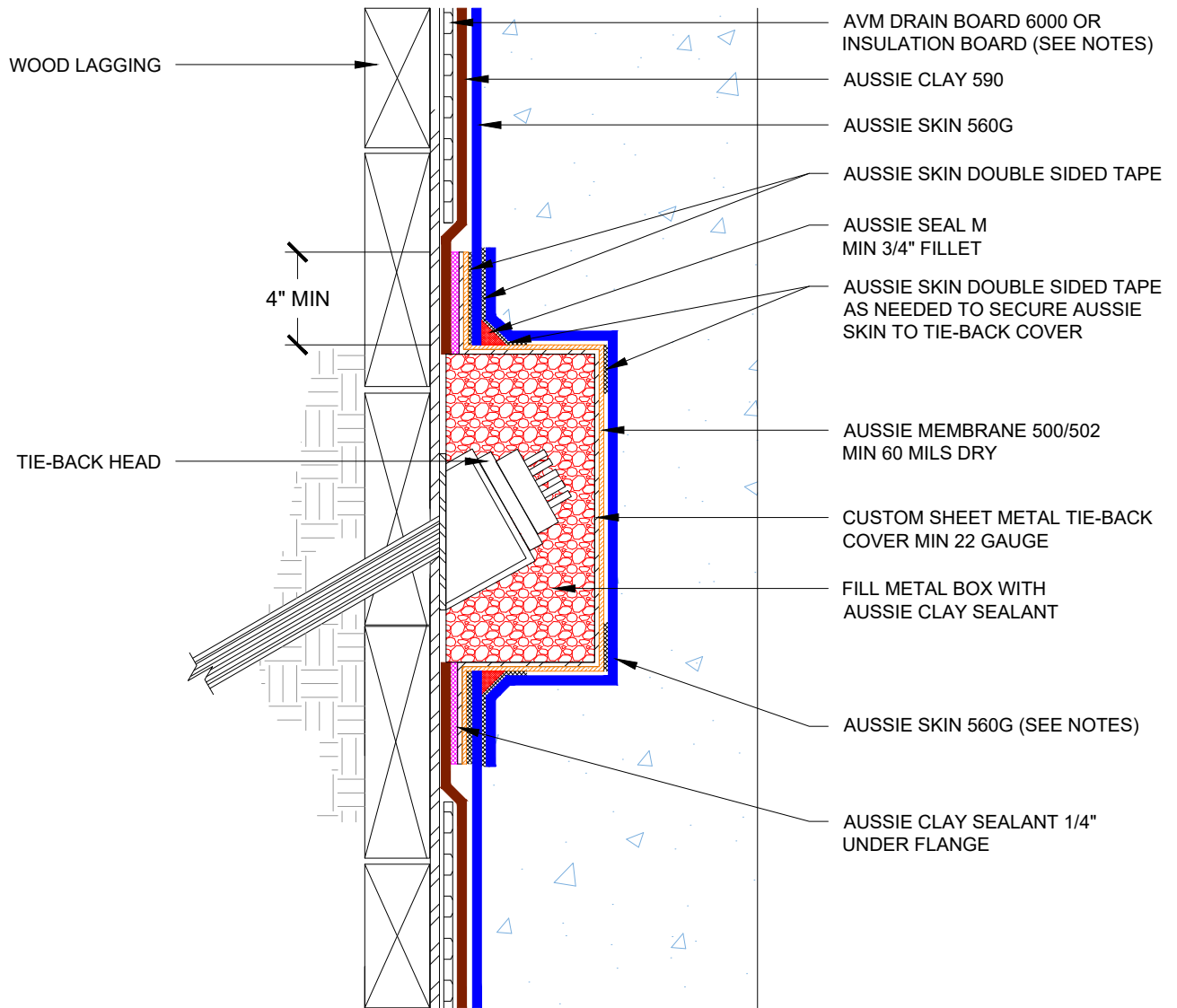
1. Aussie Skin 560G is Methane and Shot-Crete approved Heavy, Duty, Easy to Install, Puncture Resistant Sheet Waterproofing Membrane with added technologies creating excellent adhesion between the membrane and wet Concrete or Shot-Crete.
2. Aussie Clay & Aussie Clay PL are bentonite sheet membranes for waterproofing below-grade vertical and horizontal surfaces, including blindside and backfilled applications. Aussie Clay can be used with shotcrete or cast in place concrete in hydrostatic or non-hydrostatic conditions.
3. Fasten Aussie Clay with pneumatic staples or 1" washer-head fasteners placed maximum 24" on center
4. Install Aussie Clay and Aussie Clay PL with gray geotextile facing installer.
5. Overlap sheet edges 4" and stagger seams min 12"

DETAIL #:
AVM-560G-1530AC
Aussie Skin 560G/590

Metal Tie-Back Cover Aussie Clay Dual System



Only Use if AVM's Standard Tie-Back Cover Cannot be Used



Notes:

1. Aussie Skin 560G is Methane and Shot-Crete approved Heavy, Duty, Easy to Install, Puncture Resistant Sheet Waterproofing Membrane with added technologies creating excellent adhesion between the membrane and wet Concrete or Shot-Crete.
2. Aussie Clay & Aussie Clay PL are bentonite sheet membranes for waterproofing below-grade vertical and horizontal surfaces, including blindside and backfilled applications. Aussie Clay can be used with shotcrete or cast in place concrete in hydrostatic or non-hydrostatic conditions.
3. Fasten Aussie Clay with pneumatic staples or 1" washer-head fasteners placed maximum 24" on center
4. Install Aussie Clay and Aussie Clay PL with gray geotextile facing installer.

AVM Industries, Inc.
8245 Remmet Ave, Canoga Park, CA 91304

Quality Waterproofing Products

888.414.1041 818.888.0050
www.avmindustries.com

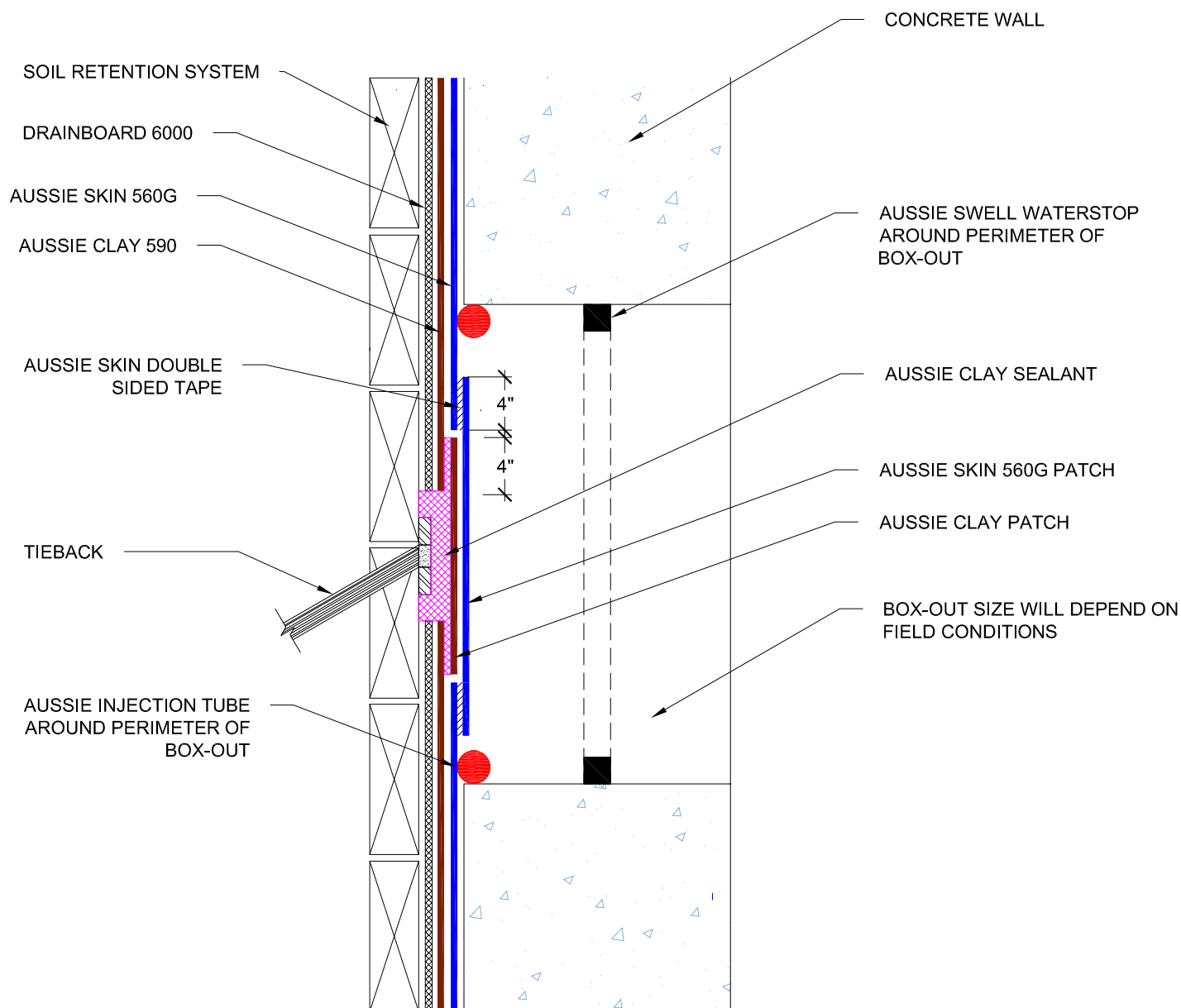
FILE NAME: 0560G-1530AC

Protected by Copyright - AVM Industries, Inc. Revision Date 1/21/2020

AVM-560G-1531AC

Aussie Skin 560G/590

Detensioned Tie-Back Box-out Aussie Clay Dual System



NOTES:

1. Aussie Skin 560G is Methane and Shot-Crete approved Heavy, Duty, Easy to Install, Puncture Resistant Sheet Waterproofing Membrane with added technologies creating excellent adhesion between the membrane and wet Concrete or Shot-Crete.
2. Aussie Clay & Aussie Clay PL are bentonite sheet membranes for waterproofing below-grade vertical and horizontal surfaces, including blindside and backfilled applications. Aussie Clay can be used with shotcrete or cast in place concrete in hydrostatic or non-hydrostatic conditions.
3. Fasten Aussie Clay with pneumatic staples or 1" washer-head fasteners placed maximum 24" on center
4. Install Aussie Clay and Aussie Clay PL with gray geotextile facing installer.
5. Overlap sheet edges 4" and stagger seams min 12"

AVM Industries, Inc.
8245 Remmet Ave, Canoga Park, CA 91304

Quality Waterproofing Products

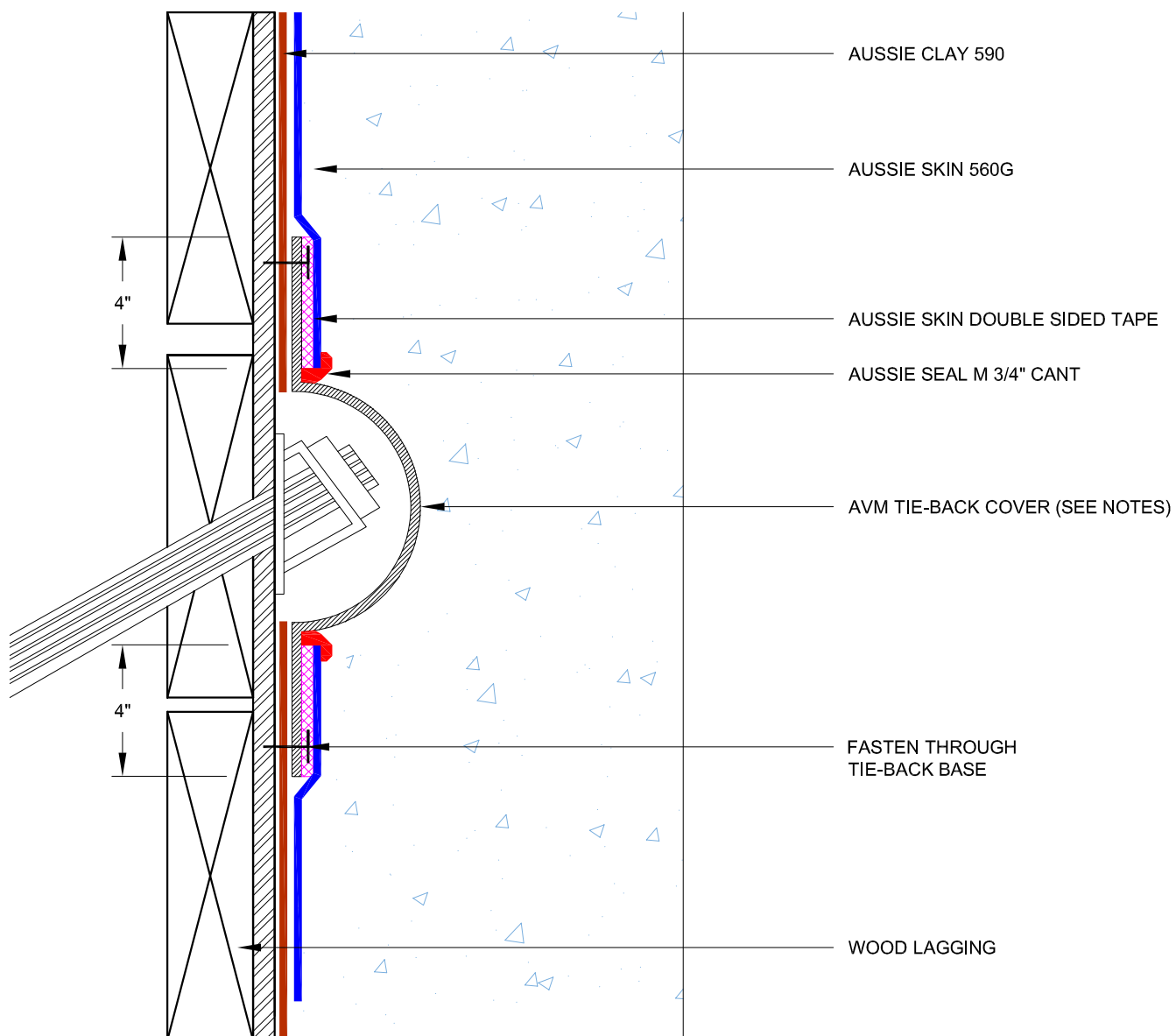
888.414.1041 818.888.0050
www.avmindustries.com

FILE NAME: 0560G-1531AC

Protected by Copyright - AVM Industries, Inc. Revision Date 1/21/2020

DETAIL #:
0560G-1532AC
AVM System 560G/590

Tie-Back Cover Aussie Clay Dual System

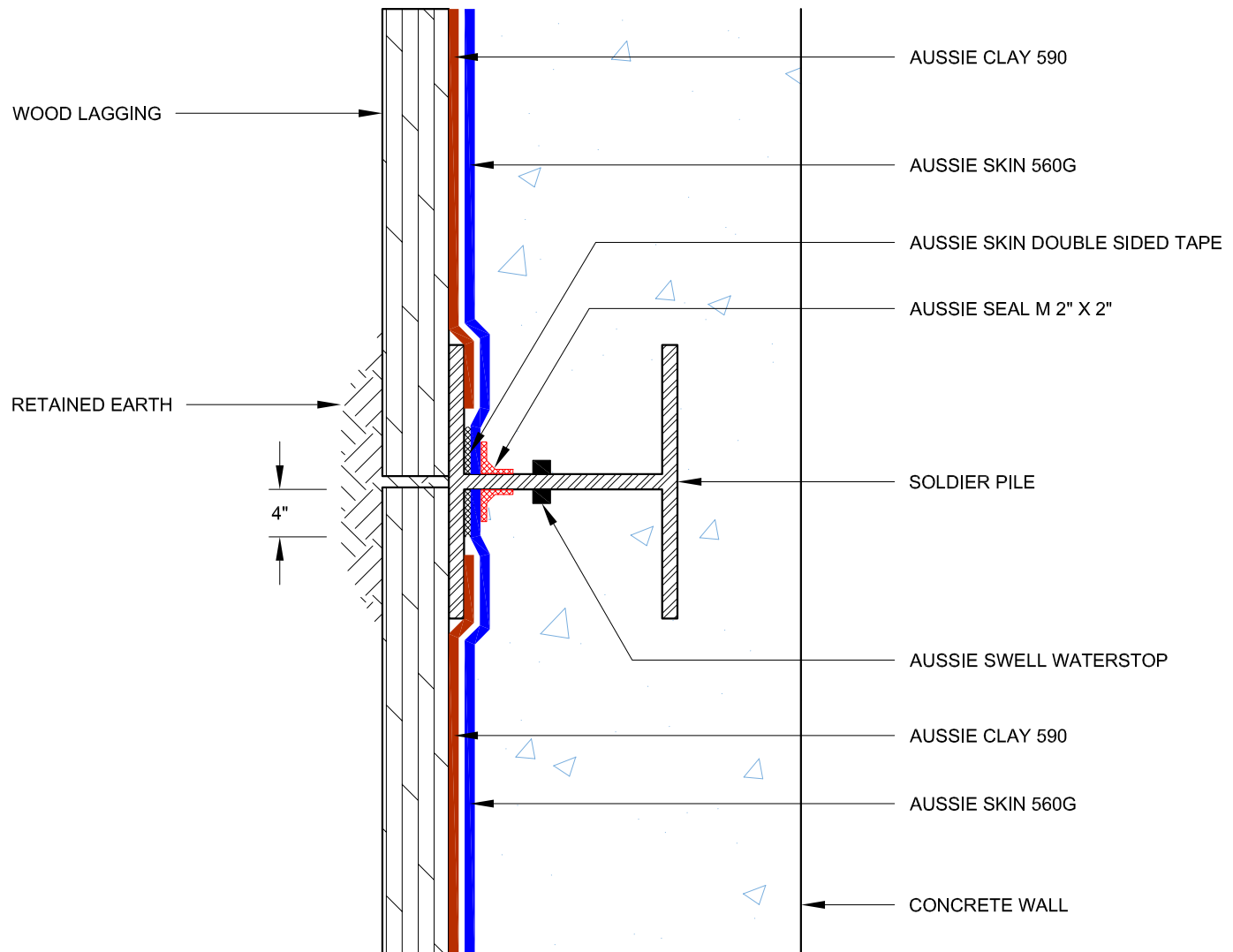


Notes:

1. Aussie Skin 560G is Methane and Shot-Crete approved Heavy, Duty, Easy to Install, Puncture Resistant Sheet Waterproofing Membrane with added technologies creating excellent adhesion between the membrane and wet Concrete or Shot-Crete.
2. Aussie Clay & Aussie Clay PL are bentonite sheet membranes for waterproofing below-grade vertical and horizontal surfaces, including blindside and backfilled applications. Aussie Clay can be used with shotcrete or cast in place concrete in hydrostatic or non-hydrostatic conditions.
3. Fasten Aussie Clay with pneumatic staples or 1" washer-head fasteners placed maximum 24" on center
4. Install Aussie Clay and Aussie Clay PL with gray geotextile facing installer.
5. Overlap sheet edges 4" and stagger seams min 12"
6. AVM tie-back covers are available in 6" and 8" domes
7. See details AVM-560G-6000, AVM-560G-6004, and AVM-560G-6010 for Aussie Skin Lap Details

DETAIL #:
0560G-1540AC
AVM System 560G/590

Back Lagged Soldier Pile Aussie Clay Dual System



Notes:

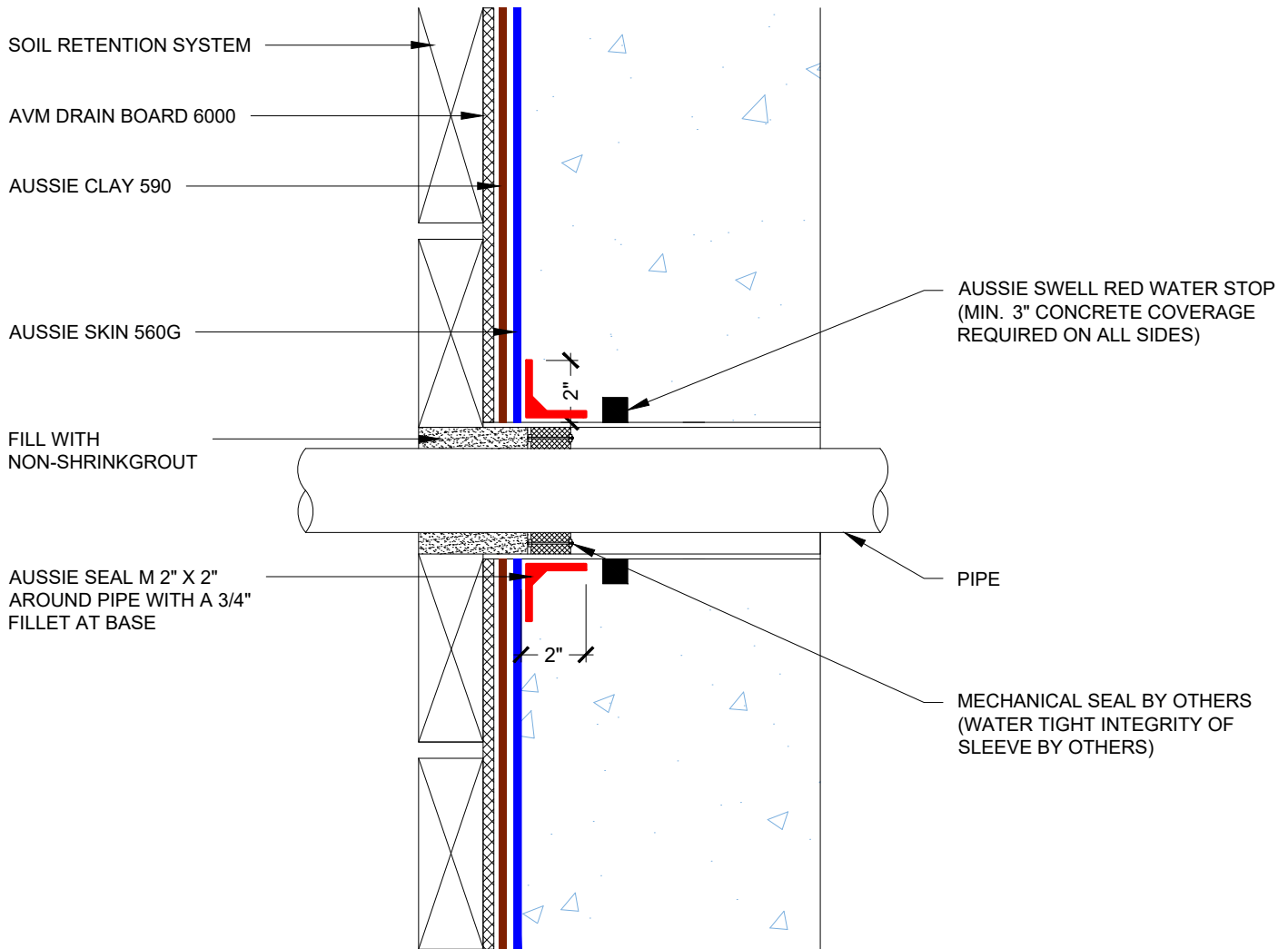
1. Aussie Skin 560G is Methane and Shot-Crete approved Heavy, Duty, Easy to Install, Puncture Resistant Sheet Waterproofing Membrane with added technologies creating excellent adhesion between the membrane and wet Concrete or Shot-Crete.
2. Aussie Clay & Aussie Clay PL are bentonite sheet membranes for waterproofing below-grade vertical and horizontal surfaces, including blindside and backfilled applications. Aussie Clay can be used with shotcrete or cast in place concrete in hydrostatic or non-hydrostatic conditions.
3. Fasten Aussie Clay with pneumatic staples or 1" washer-head fasteners placed maximum 24" on center
4. Install Aussie Clay and Aussie Clay PL with gray geotextile facing installer.

DETAIL #:

AVM-560G-4005AC

AVM System 560G/590

Sleeved Pipe Penetration Aussie Clay Dual System



NOTES:

1. Aussie Skin 560G is Methane and Shot-Crete approved Heavy, Duty, Easy to Install, Puncture Resistant Sheet Waterproofing Membrane with added technologies creating excellent adhesion between the membrane and wet Concrete or Shot-Crete.
2. Aussie Clay & Aussie Clay PL are bentonite sheet membranes for waterproofing below-grade vertical and horizontal surfaces, including blindside and backfilled applications. Aussie Clay can be used with shotcrete or cast in place concrete in hydrostatic or non-hydrostatic conditions.
3. Fasten Aussie Clay with pneumatic staples or 1" washer-head fasteners placed maximum 24" on center
4. Install Aussie Clay and Aussie Clay PL with gray geotextile facing installer.
5. Overlap sheet edges 4" and stagger seams min 12"

AVM Industries, Inc.
8245 Remmet Ave, Canoga Park, CA 91304

Quality Waterproofing Products

888.414.1041 818.888.0050
www.avmindustries.com

FILE NAME: 0560G-4005AC

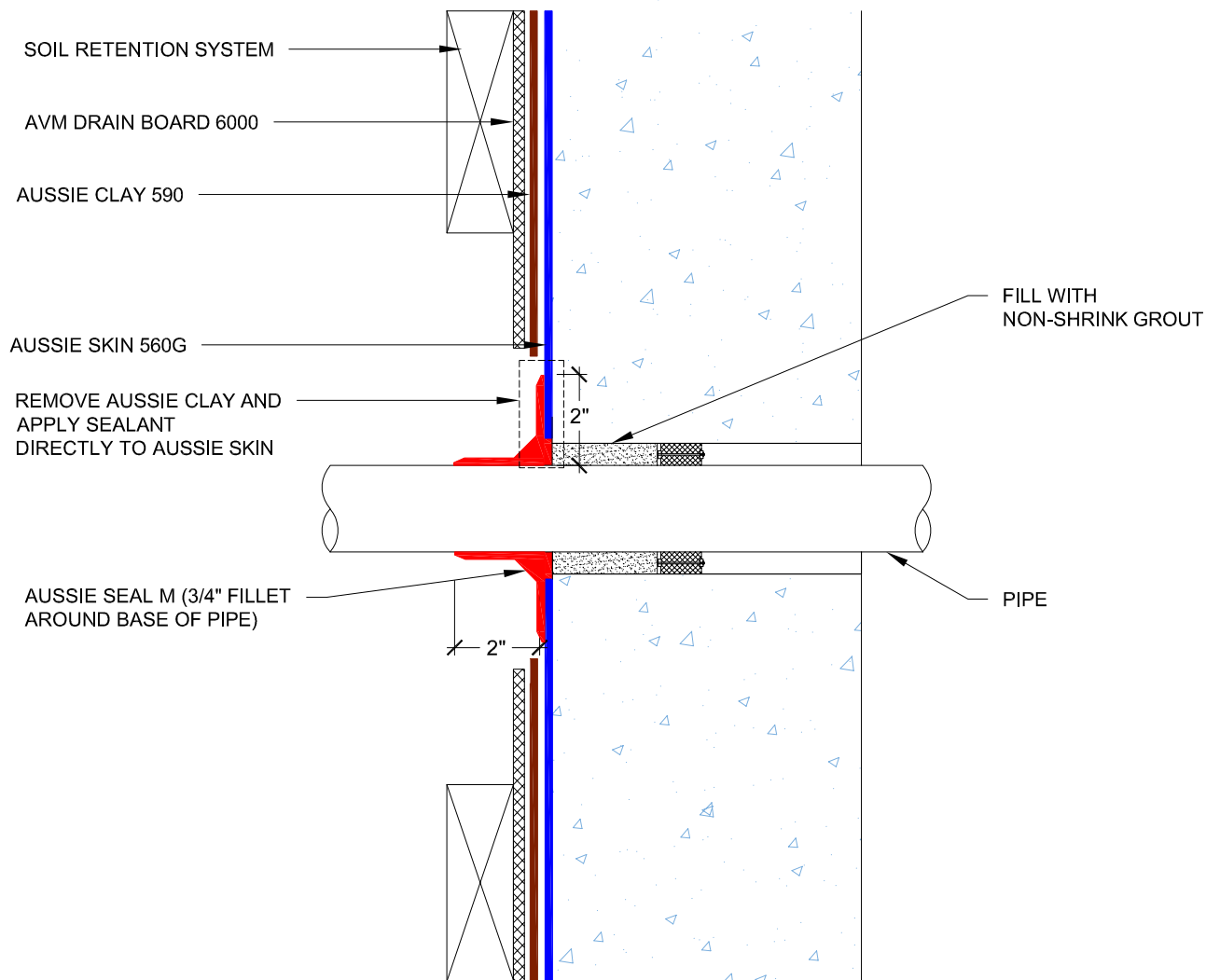
Protected by Copyright - AVM Industries, Inc. Revision Date 1/21/2020

DETAIL #:

AVM-560G-4010AC

AVM System 560G/590

Pipe Penetration Sealant on HDPE Side Aussie Clay Dual System

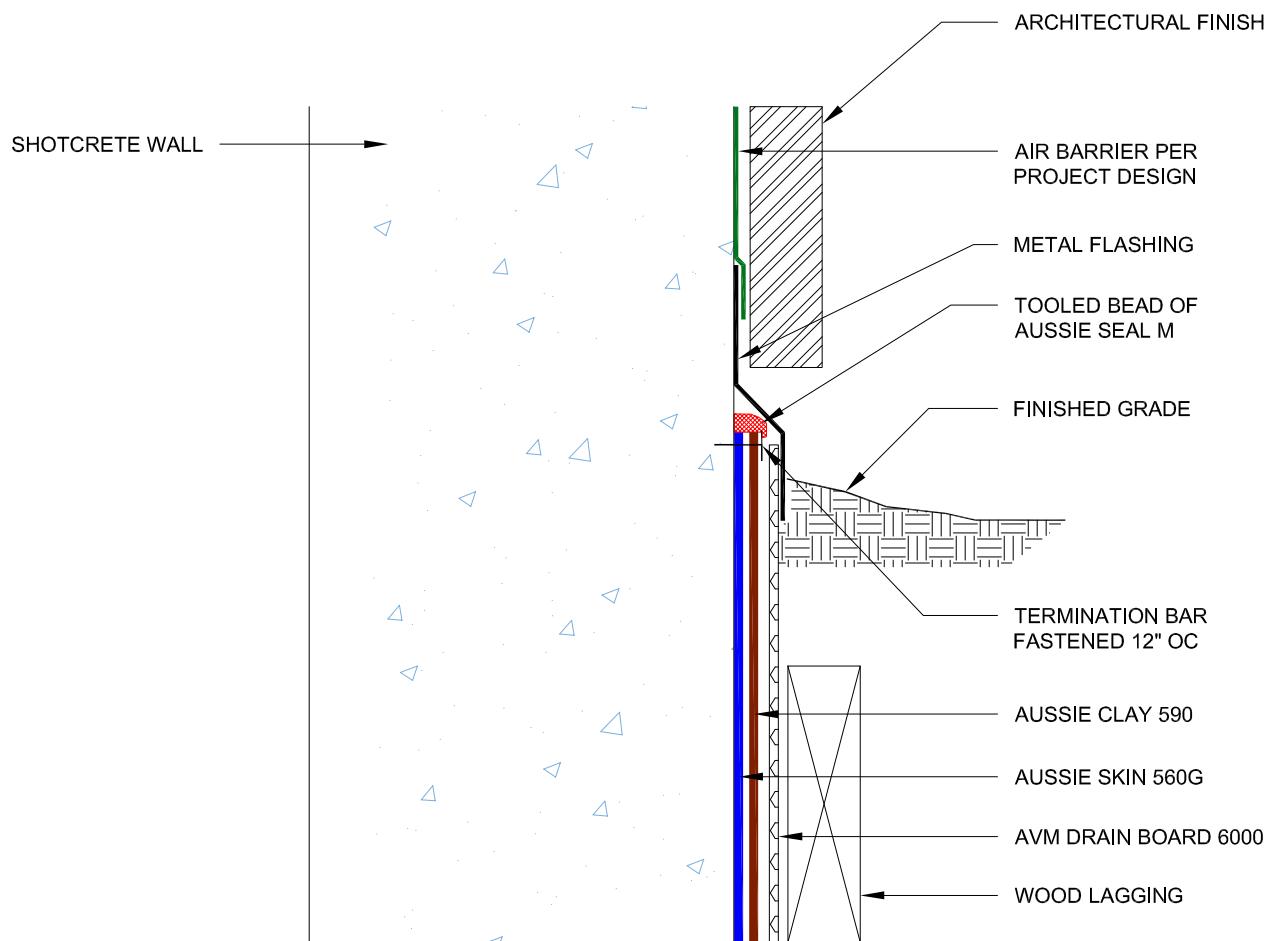


NOTES:

1. Aussie Skin 560G is Methane and Shot-Crete approved Heavy, Duty, Easy to Install, Puncture Resistant Sheet Waterproofing Membrane with added technologies creating excellent adhesion between the membrane and wet Concrete or Shot-Crete.
2. Aussie Clay & Aussie Clay PL are bentonite sheet membranes for waterproofing below-grade vertical and horizontal surfaces, including blindside and backfilled applications. Aussie Clay can be used with shotcrete or cast in place concrete in hydrostatic or non-hydrostatic conditions.
3. Fasten Aussie Clay with pneumatic staples or 1" washer-head fasteners placed maximum 24" on center
4. Install Aussie Clay and Aussie Clay PL with gray geotextile facing installer.
5. Overlap sheet edges 4" and stagger seams min 12"

DETAIL #:
0560G-7502AC
AVM System 560G/590

Grade Termination - Option 2 Aussie Clay Dual System

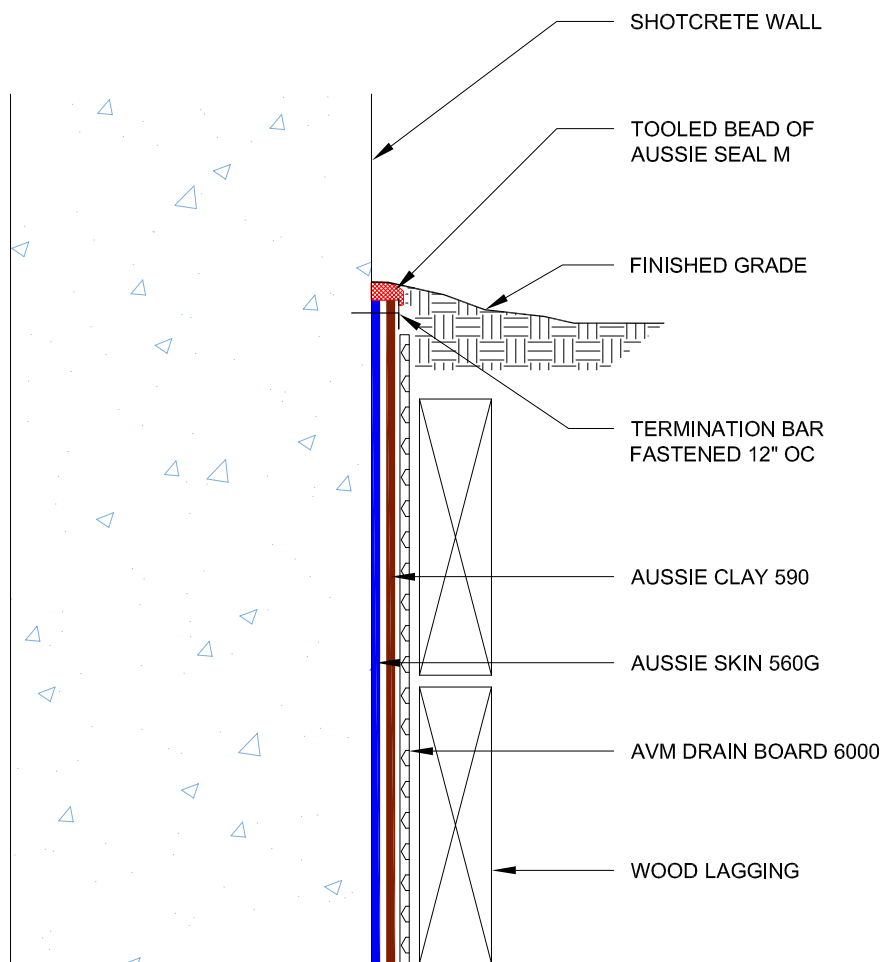


Notes:

1. Aussie Skin 560G is Methane and Shot-Crete approved Heavy, Duty, Easy to Install, Puncture Resistant Sheet Waterproofing Membrane with added technologies creating excellent adhesion between the membrane and wet Concrete or Shot-Crete.
2. Aussie Clay & Aussie Clay PL are bentonite sheet membranes for waterproofing below-grade vertical and horizontal surfaces, including blindside and backfilled applications. Aussie Clay can be used with shotcrete or cast in place concrete in hydrostatic or non-hydrostatic conditions.
3. Fasten Aussie Clay with pneumatic staples or 1" washer-head fasteners placed maximum 24" on center
4. Install Aussie Clay and Aussie Clay PL with gray geotextile facing installer.
5. Overlap sheet edges 4" and stagger seams min 12"

DETAIL #:
0560G-7505AC
AVM System 560/590

Grade Termination - Option 1 Aussie Clay Dual System



Notes:

1. Aussie Skin 560G is Methane and Shot-Crete approved Heavy, Duty, Easy to Install, Puncture Resistant Sheet Waterproofing Membrane with added technologies creating excellent adhesion between the membrane and wet Concrete or Shot-Crete.
2. Aussie Clay & Aussie Clay PL are bentonite sheet membranes for waterproofing below-grade vertical and horizontal surfaces, including blindside and backfilled applications. Aussie Clay can be used with shotcrete or cast in place concrete in hydrostatic or non-hydrostatic conditions.
3. Fasten Aussie Clay with pneumatic staples or 1" washer-head fasteners placed maximum 24" on center
4. Install Aussie Clay and Aussie Clay PL with gray geotextile facing installer.
5. Overlap sheet edges 4" and stagger seams min 12"