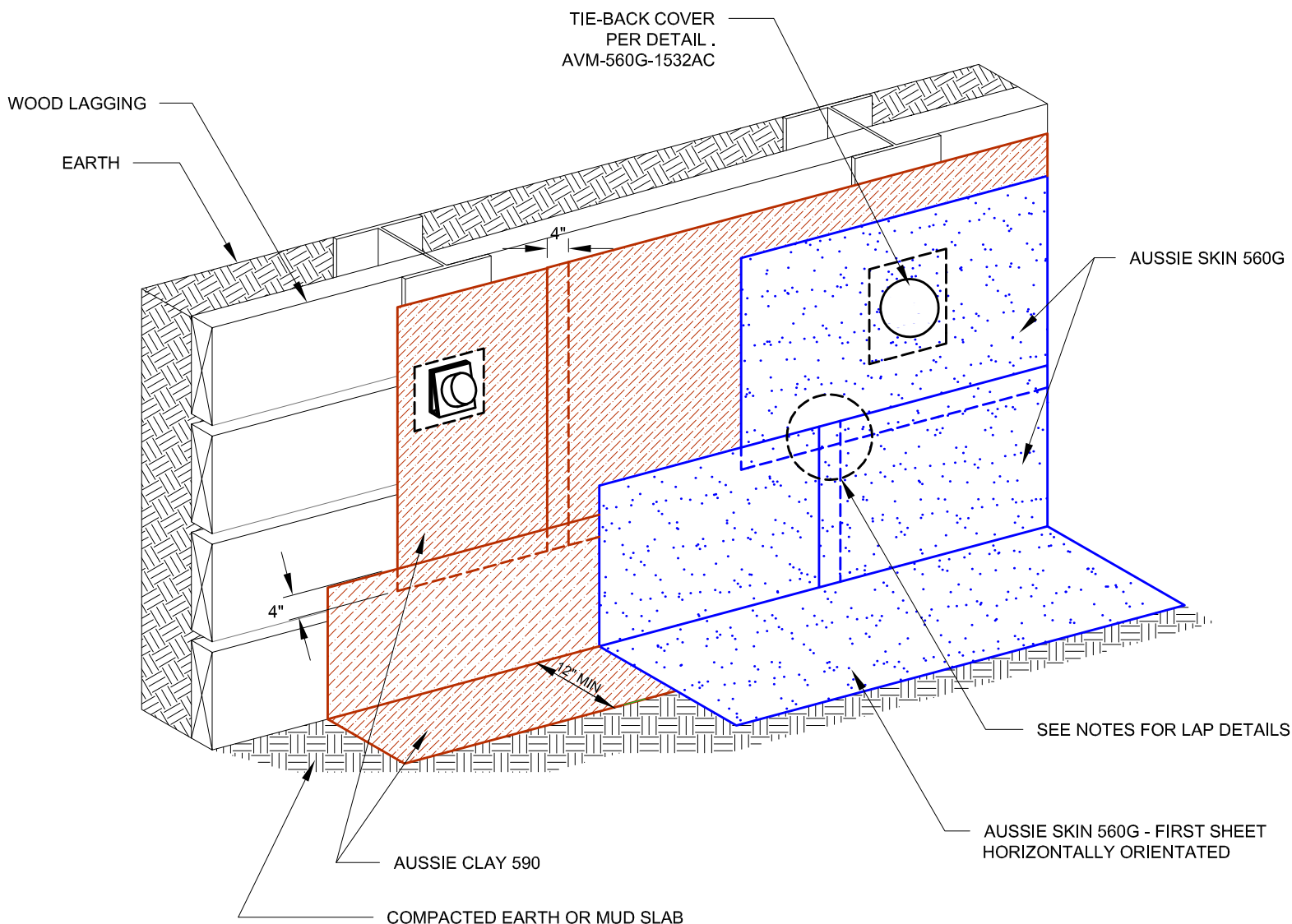


DETAIL #:
0560G-1200AC
AVM System 560G/590

Typical Lagging Wall Aussie Clay Dual System



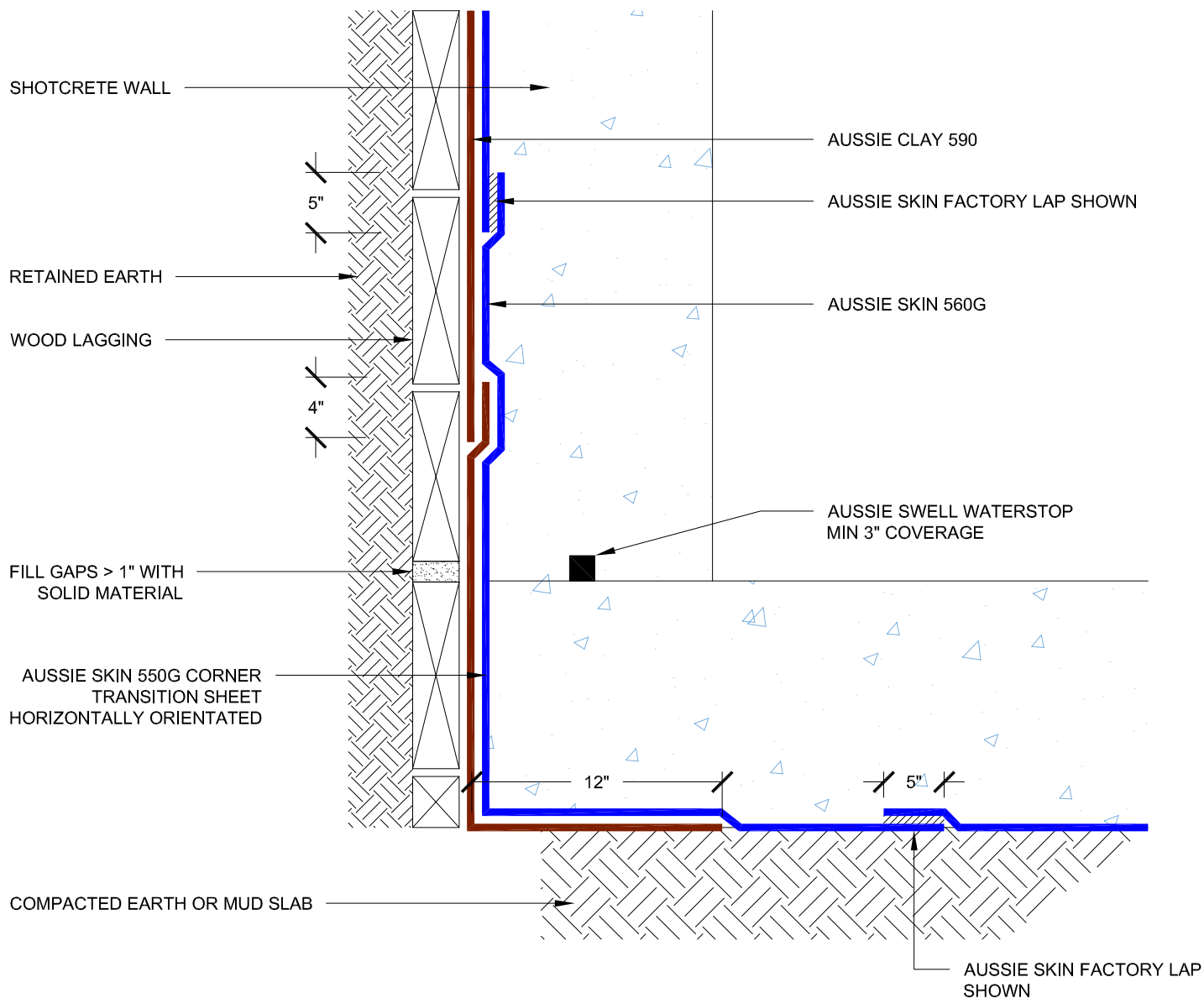
Notes:

1. Aussie Skin 560G is Methane and Shot-Crete approved Heavy, Duty, Easy to Install, Puncture Resistant Sheet Waterproofing Membrane with added technologies creating excellent adhesion between the membrane and wet Concrete or Shot-Crete.
2. Aussie Clay & Aussie Clay PL are bentonite sheet membranes for waterproofing below-grade vertical and horizontal surfaces, including blindside and backfilled applications. Aussie Clay can be used with shotcrete or cast in place concrete in hydrostatic or non-hydrostatic conditions.
3. Fasten Aussie Clay with pneumatic staples or 1" washer-head fasteners placed maximum 24" on center
4. Install Aussie Clay and Aussie Clay PL with gray geotextile facing installer.
5. Overlap sheet edges 4" and stagger seams min 12"
6. See details AVM-560G-6000, AVM-560G-6004, and AVM-560G-6010 for Aussie Skin Lap Details

DETAIL #:
0560G-1212AC

AVM System 560/590

Blind Side Waterproofing over Lagging Aussie Clay Dual System - Hydrostatic



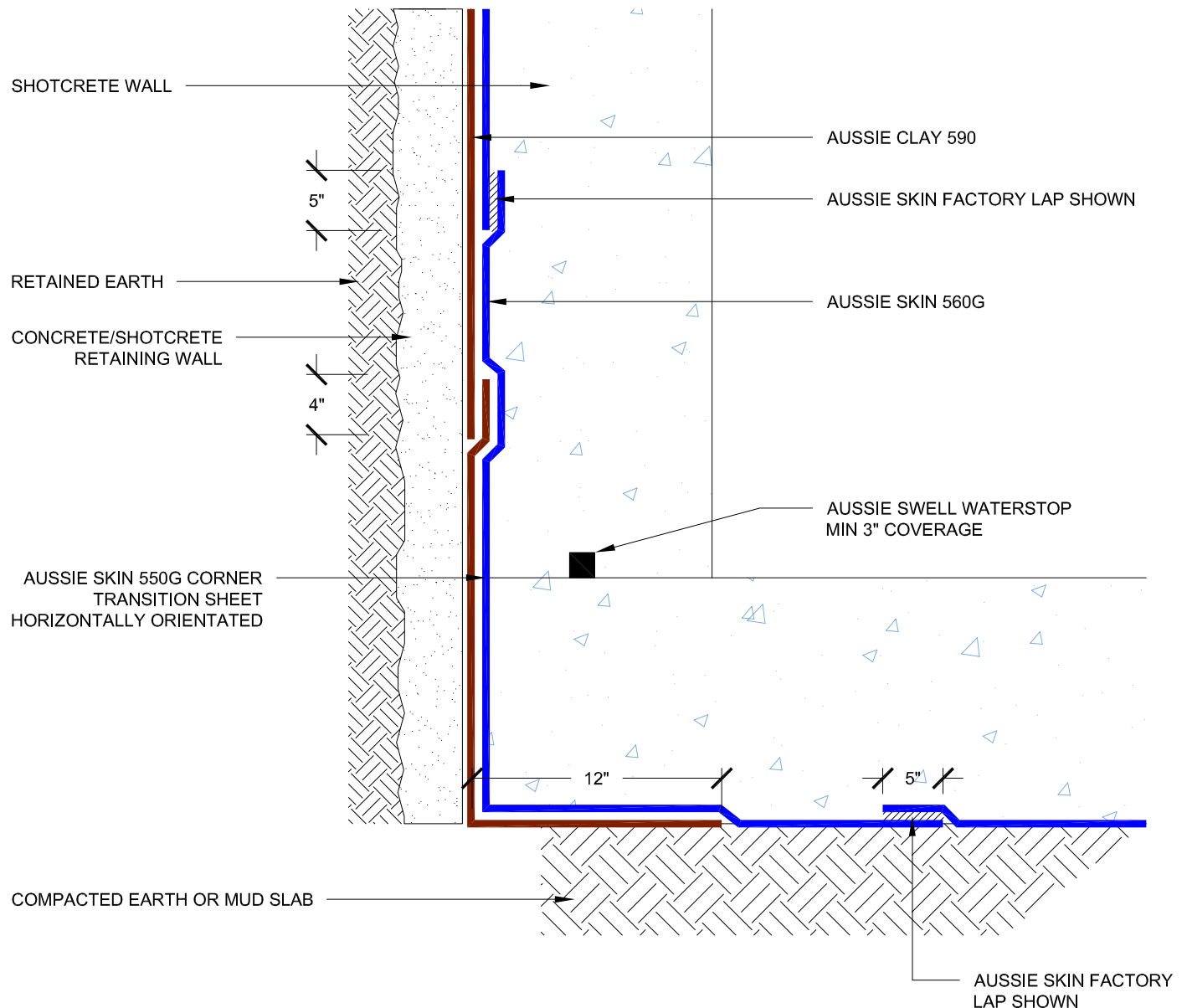
Notes:

1. Aussie Skin 560G is Methane and Shot-Crete approved Heavy, Duty, Easy to Install, Puncture Resistant Sheet Waterproofing Membrane with added technologies creating excellent adhesion between the membrane and wet Concrete or Shot-Crete.
2. Aussie Clay & Aussie Clay PL are bentonite sheet membranes for waterproofing below-grade vertical and horizontal surfaces, including blindside and backfilled applications. Aussie Clay can be used with shotcrete or cast in place concrete in hydrostatic or non-hydrostatic conditions.
3. Fasten Aussie Clay with pneumatic staples or 1" washer-head fasteners placed maximum 24" on center
4. Install Aussie Clay and Aussie Clay PL with gray geotextile facing installer.
5. Overlap sheet edges 4" and stagger seams min 12"
6. See details AVM-560G-6000, AVM-560G-6004, and AVM-560G-6010 for Aussie Skin Lap Details

DETAIL #:
0560G-1214AC

AVM System 560G/590

Blind Side Waterproofing over Concrete/Shotcrete Aussie Clay Dual System - Hydrostatic

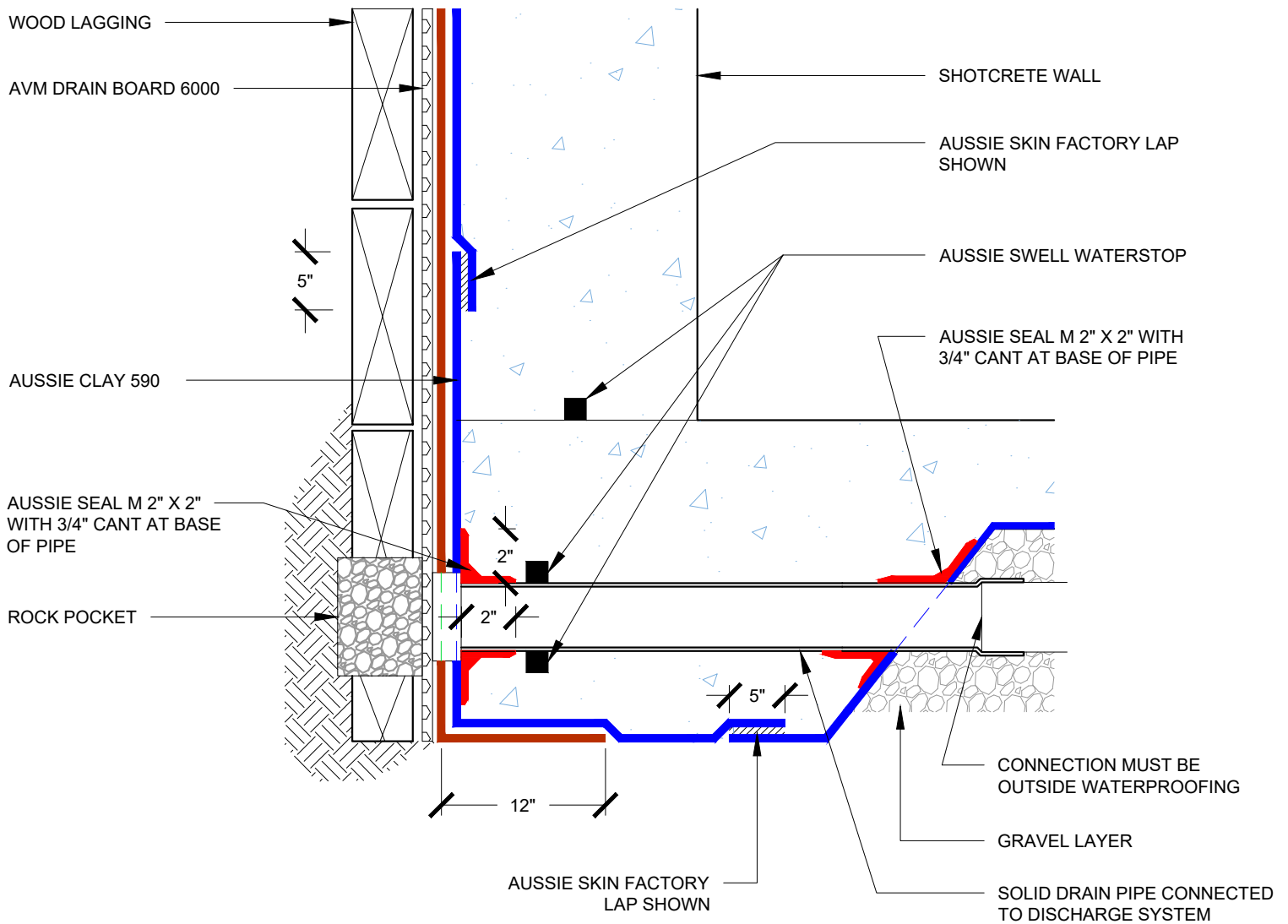


Notes:

1. Aussie Skin 560G is Methane and Shot-Crete approved Heavy, Duty, Easy to Install, Puncture Resistant Sheet Waterproofing Membrane with added technologies creating excellent adhesion between the membrane and wet Concrete or Shot-Crete.
2. Aussie Clay & Aussie Clay PL are bentonite sheet membranes for waterproofing below-grade vertical and horizontal surfaces, including blindside and backfilled applications. Aussie Clay can be used with shotcrete or cast in place concrete in hydrostatic or non-hydrostatic conditions.
3. Fasten Aussie Clay with pneumatic staples or 1" washer-head fasteners placed maximum 24" on center
4. Install Aussie Clay and Aussie Clay PL with gray geotextile facing installer.
5. Overlap sheet edges 4" and stagger seams min 12"
6. See details AVM-560G-6000, AVM-560G-6004, and AVM-560G-6010 for Aussie Skin Lap Details

DETAIL #:
0560G-1220AC
AVM System 550G/590

Lagging Wall with Rock Pocket Aussie Clay Dual System

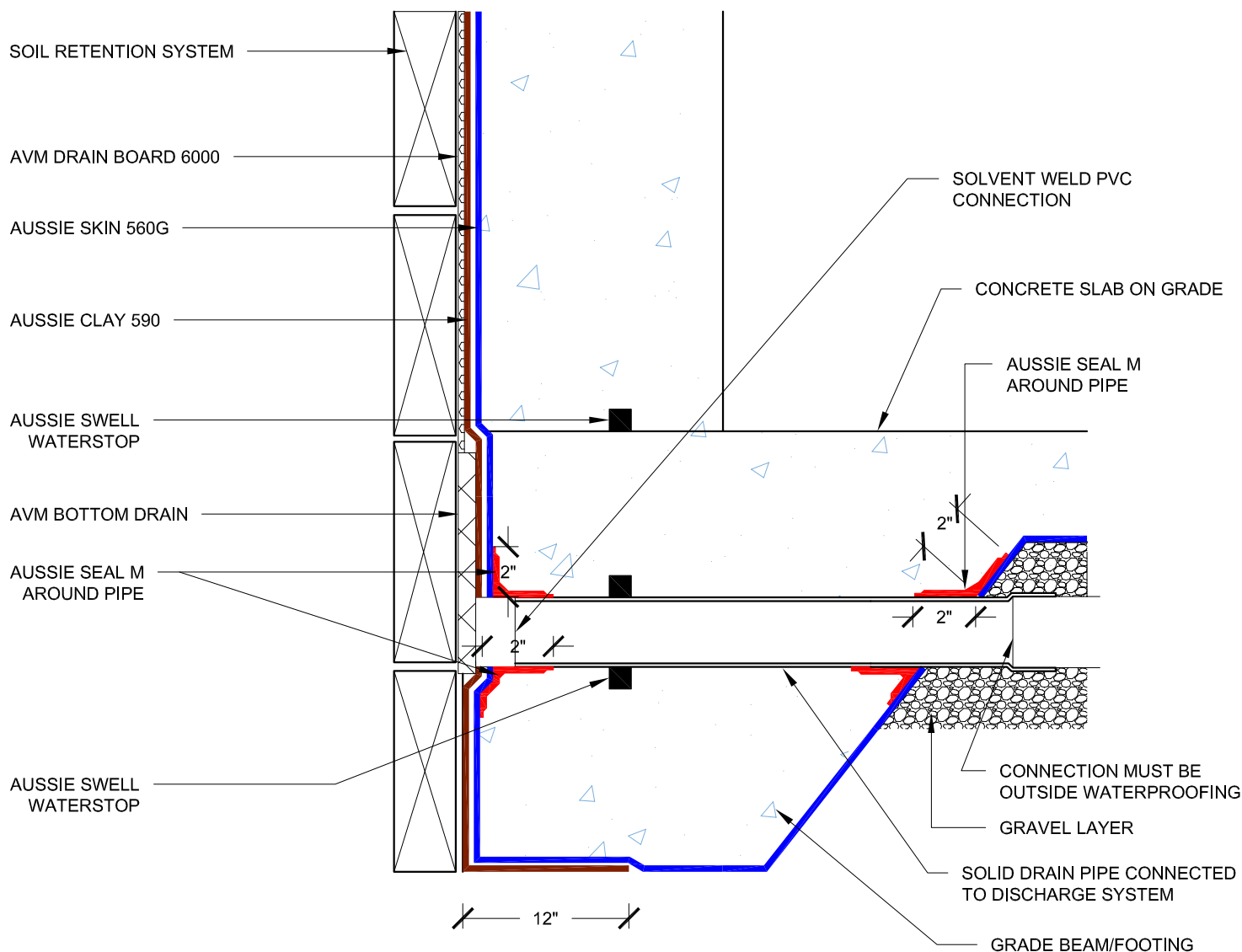


Notes:

1. Aussie Skin 560G is Methane and Shot-Crete approved Heavy, Duty, Easy to Install, Puncture Resistant Sheet Waterproofing Membrane with added technologies creating excellent adhesion between the membrane and wet Concrete or Shot-Crete.
2. All surfaces must be clean and sound before installing the lap joints. (Remove excess sand before applying double sided tapSee details
3. See details AVM-560G-6000, AVM-560G-6004, and AVM-560G-6010 for Aussie Skin Lap Details
4. Drain board must be connected to a permanent dewatering system if used in hydrostatic conditions.

DETAIL #:
0560G-1226AC
AVM System 560G/590

Raised Slab Aussie Clay Dual System - Non-Hydrostatic



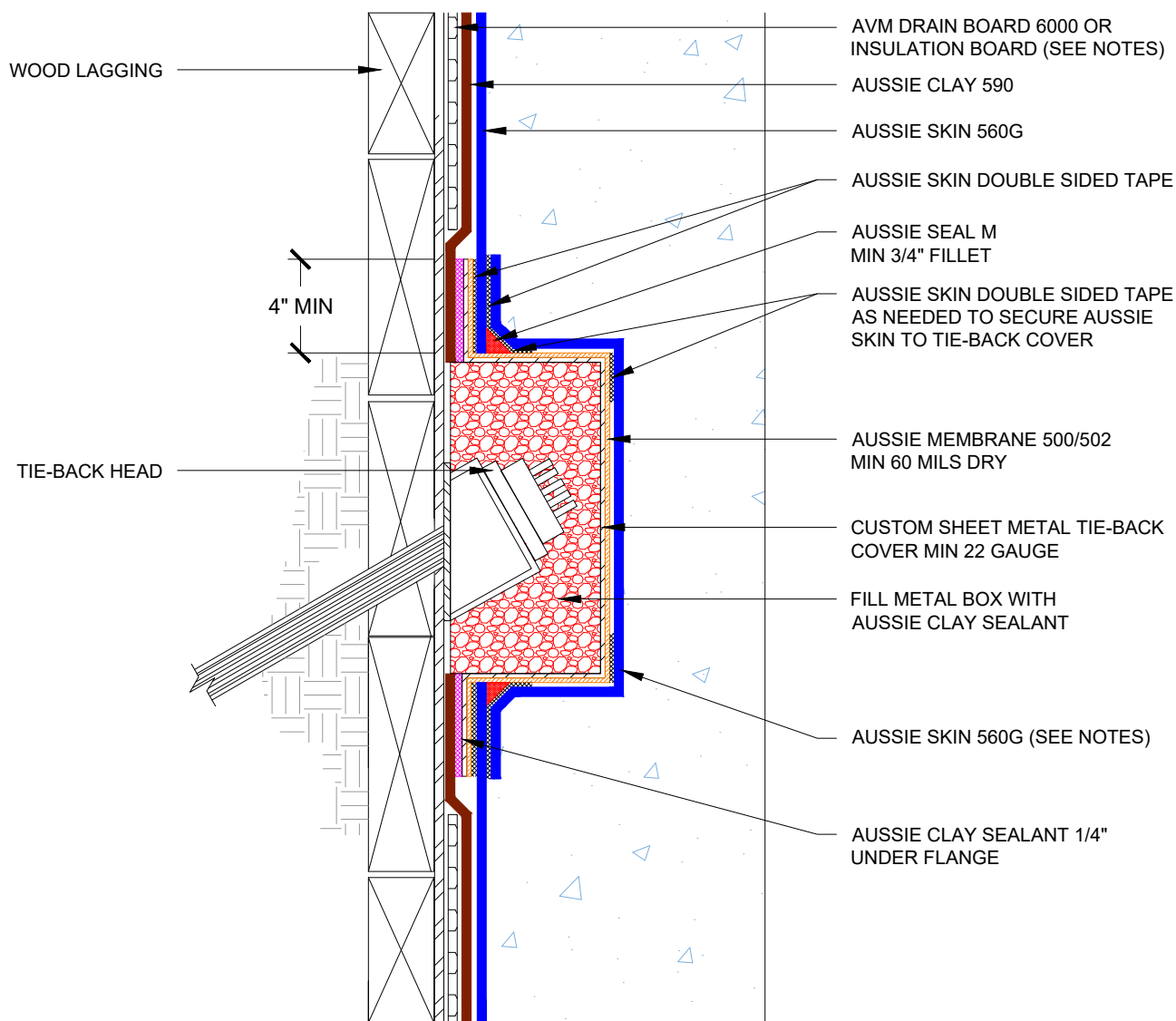
Notes:

1. Aussie Skin 560G is Methane and Shot-Crete approved Heavy, Duty, Easy to Install, Puncture Resistant Sheet Waterproofing Membrane with added technologies creating excellent adhesion between the membrane and wet Concrete or Shot-Crete.
2. Aussie Clay & Aussie Clay PL are bentonite sheet membranes for waterproofing below-grade vertical and horizontal surfaces, including blindside and backfilled applications. Aussie Clay can be used with shotcrete or cast in place concrete in hydrostatic or non-hydrostatic conditions.
3. Fasten Aussie Clay with pneumatic staples or 1" washer-head fasteners placed maximum 24" on center
4. Install Aussie Clay and Aussie Clay PL with gray geotextile facing installer.
5. Overlap sheet edges 4" and stagger seams min 12"

DETAIL #:

AVM-560G-1530AC

Aussie Skin 560G/590



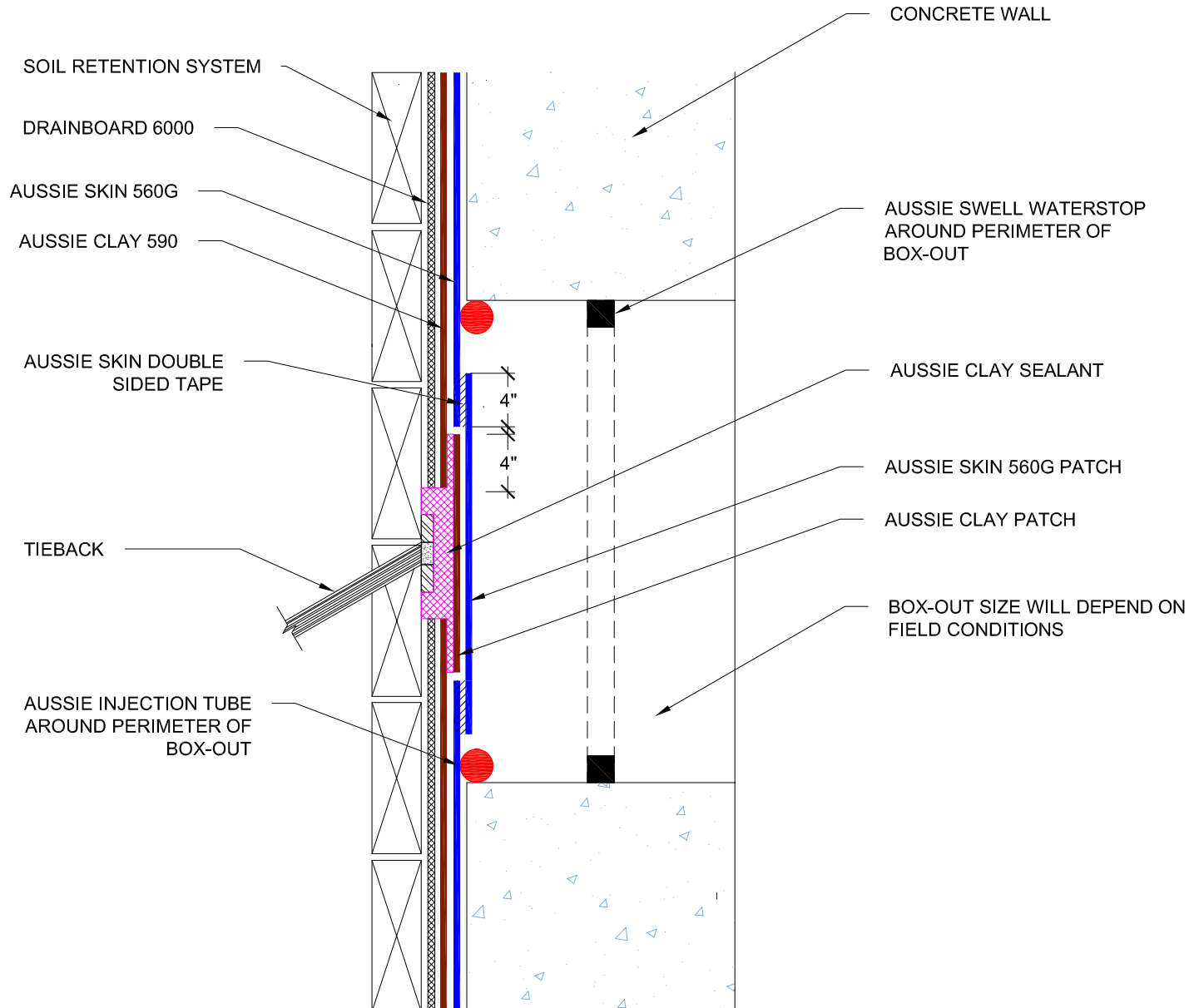
Protected by Copyright - AVM Industries, Inc. Revision Date 1/21/2020

DETAIL #:

AVM-560G-1531AC

Aussie Skin 560G/590

Detensioned Tie-Back Box-out Aussie Clay Dual System



NOTES:

1. Aussie Skin 560G is Methane and Shot-Crete approved Heavy, Duty, Easy to Install, Puncture Resistant Sheet Waterproofing Membrane with added technologies creating excellent adhesion between the membrane and wet Concrete or Shot-Crete.
2. Aussie Clay & Aussie Clay PL are bentonite sheet membranes for waterproofing below-grade vertical and horizontal surfaces, including blindside and backfilled applications. Aussie Clay can be used with shotcrete or cast in place concrete in hydrostatic or non-hydrostatic conditions.
3. Fasten Aussie Clay with pneumatic staples or 1" washer-head fasteners placed maximum 24" on center
4. Install Aussie Clay and Aussie Clay PL with gray geotextile facing installer.
5. Overlap sheet edges 4" and stagger seams min 12"

AVM Industries, Inc.
8245 Remmet Ave, Canoga Park, CA 91304

Quality Waterproofing Products

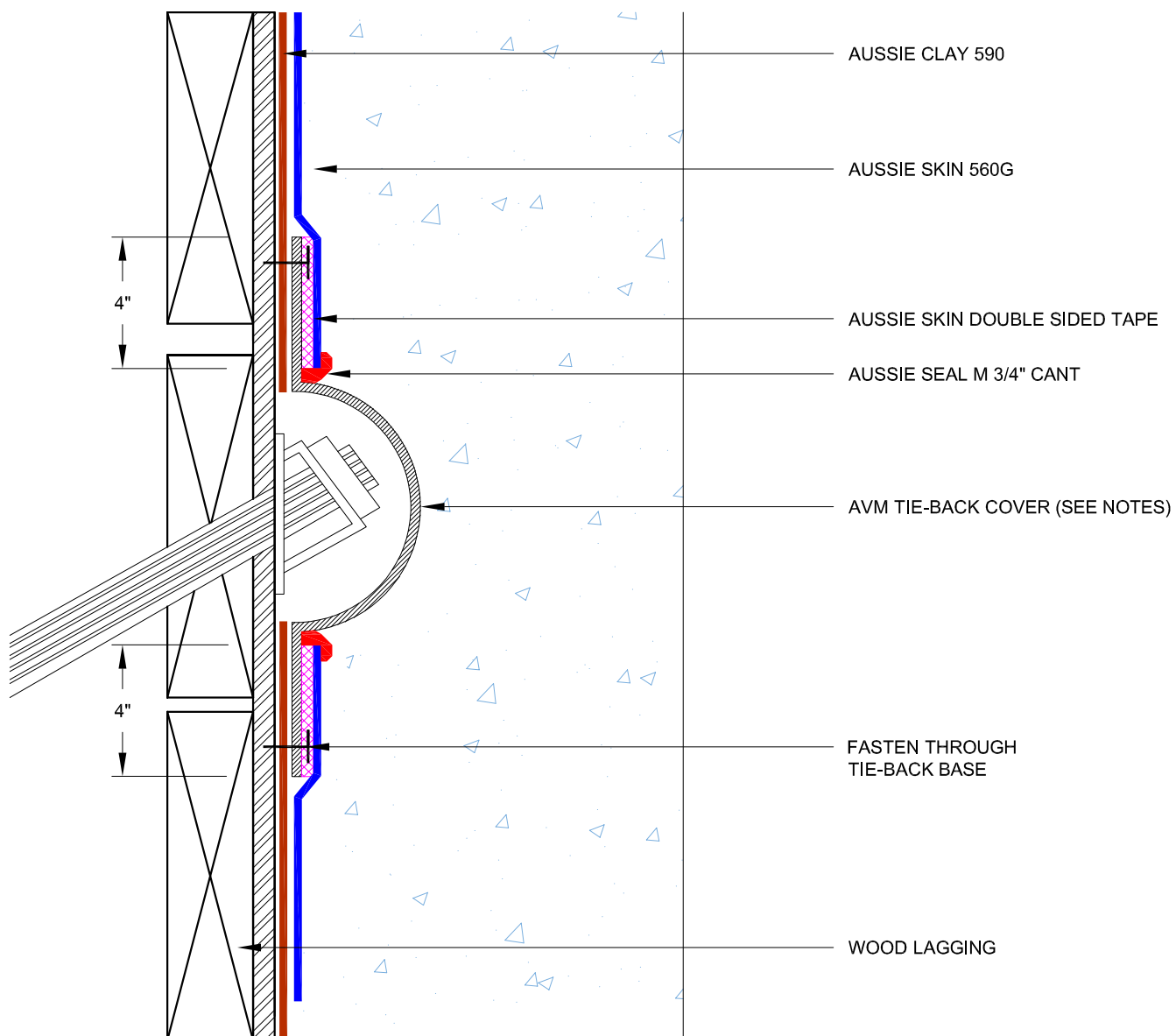
888.414.1041 818.888.0050
www.avmindustries.com

FILE NAME: 0560G-1531AC

Protected by Copyright - AVM Industries, Inc. Revision Date 1/21/2020

DETAIL #:
0560G-1532AC
AVM System 560G/590

Tie-Back Cover Aussie Clay Dual System

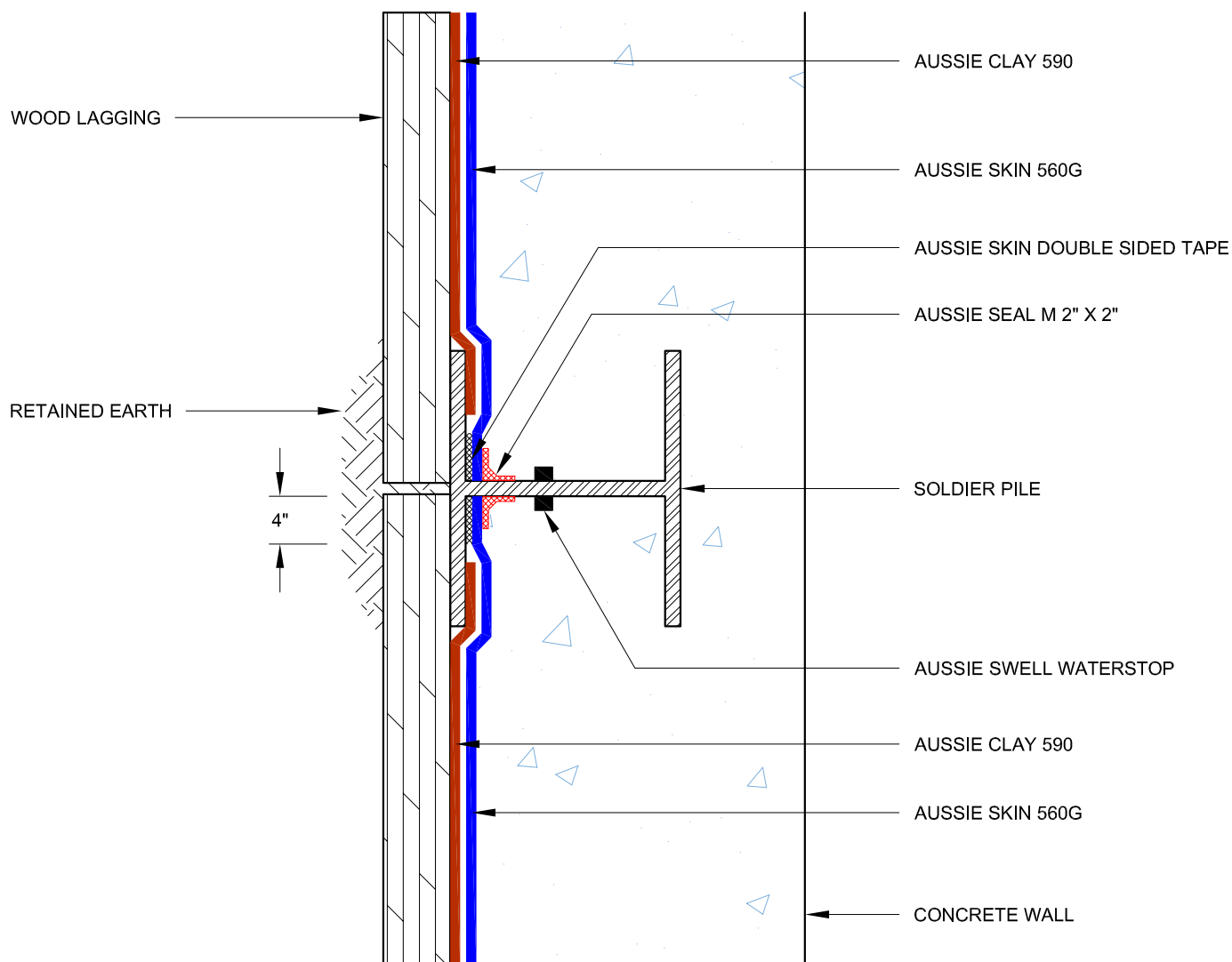


Notes:

1. Aussie Skin 560G is Methane and Shot-Crete approved Heavy, Duty, Easy to Install, Puncture Resistant Sheet Waterproofing Membrane with added technologies creating excellent adhesion between the membrane and wet Concrete or Shot-Crete.
2. Aussie Clay & Aussie Clay PL are bentonite sheet membranes for waterproofing below-grade vertical and horizontal surfaces, including blindside and backfilled applications. Aussie Clay can be used with shotcrete or cast in place concrete in hydrostatic or non-hydrostatic conditions.
3. Fasten Aussie Clay with pneumatic staples or 1" washer-head fasteners placed maximum 24" on center
4. Install Aussie Clay and Aussie Clay PL with gray geotextile facing installer.
5. Overlap sheet edges 4" and stagger seams min 12"
6. AVM tie-back covers are available in 6" and 8" domes
7. See details AVM-560G-6000, AVM-560G-6004, and AVM-560G-6010 for Aussie Skin Lap Details

DETAIL #:
0560G-1540AC
AVM System 560G/590

Back Lagged Soldier Pile Aussie Clay Dual System



Notes:

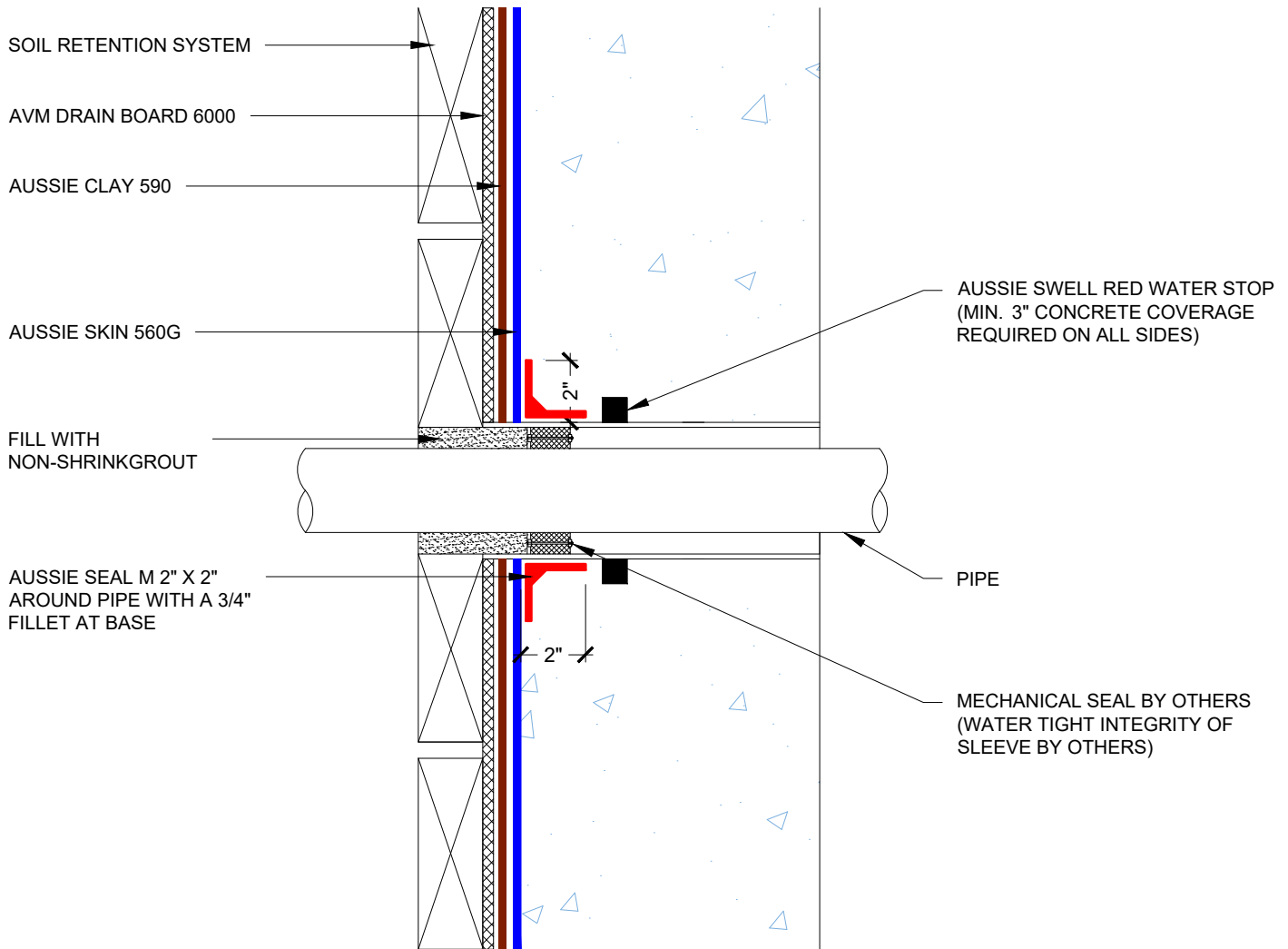
1. Aussie Skin 560G is Methane and Shot-Crete approved Heavy, Duty, Easy to Install, Puncture Resistant Sheet Waterproofing Membrane with added technologies creating excellent adhesion between the membrane and wet Concrete or Shot-Crete.
2. Aussie Clay & Aussie Clay PL are bentonite sheet membranes for waterproofing below-grade vertical and horizontal surfaces, including blindside and backfilled applications. Aussie Clay can be used with shotcrete or cast in place concrete in hydrostatic or non-hydrostatic conditions.
3. Fasten Aussie Clay with pneumatic staples or 1" washer-head fasteners placed maximum 24" on center
4. Install Aussie Clay and Aussie Clay PL with gray geotextile facing installer.

DETAIL #:

AVM-560G-4005AC

AVM System 560G/590

Sleeved Pipe Penetration Aussie Clay Dual System



NOTES:

1. Aussie Skin 560G is Methane and Shot-Crete approved Heavy, Duty, Easy to Install, Puncture Resistant Sheet Waterproofing Membrane with added technologies creating excellent adhesion between the membrane and wet Concrete or Shot-Crete.
2. Aussie Clay & Aussie Clay PL are bentonite sheet membranes for waterproofing below-grade vertical and horizontal surfaces, including blindside and backfilled applications. Aussie Clay can be used with shotcrete or cast in place concrete in hydrostatic or non-hydrostatic conditions.
3. Fasten Aussie Clay with pneumatic staples or 1" washer-head fasteners placed maximum 24" on center
4. Install Aussie Clay and Aussie Clay PL with gray geotextile facing installer.
5. Overlap sheet edges 4" and stagger seams min 12"

AVM Industries, Inc.
8245 Remmet Ave, Canoga Park, CA 91304

Quality Waterproofing Products

888.414.1041 818.888.0050
www.avmindustries.com

FILE NAME: 0560G-4005AC

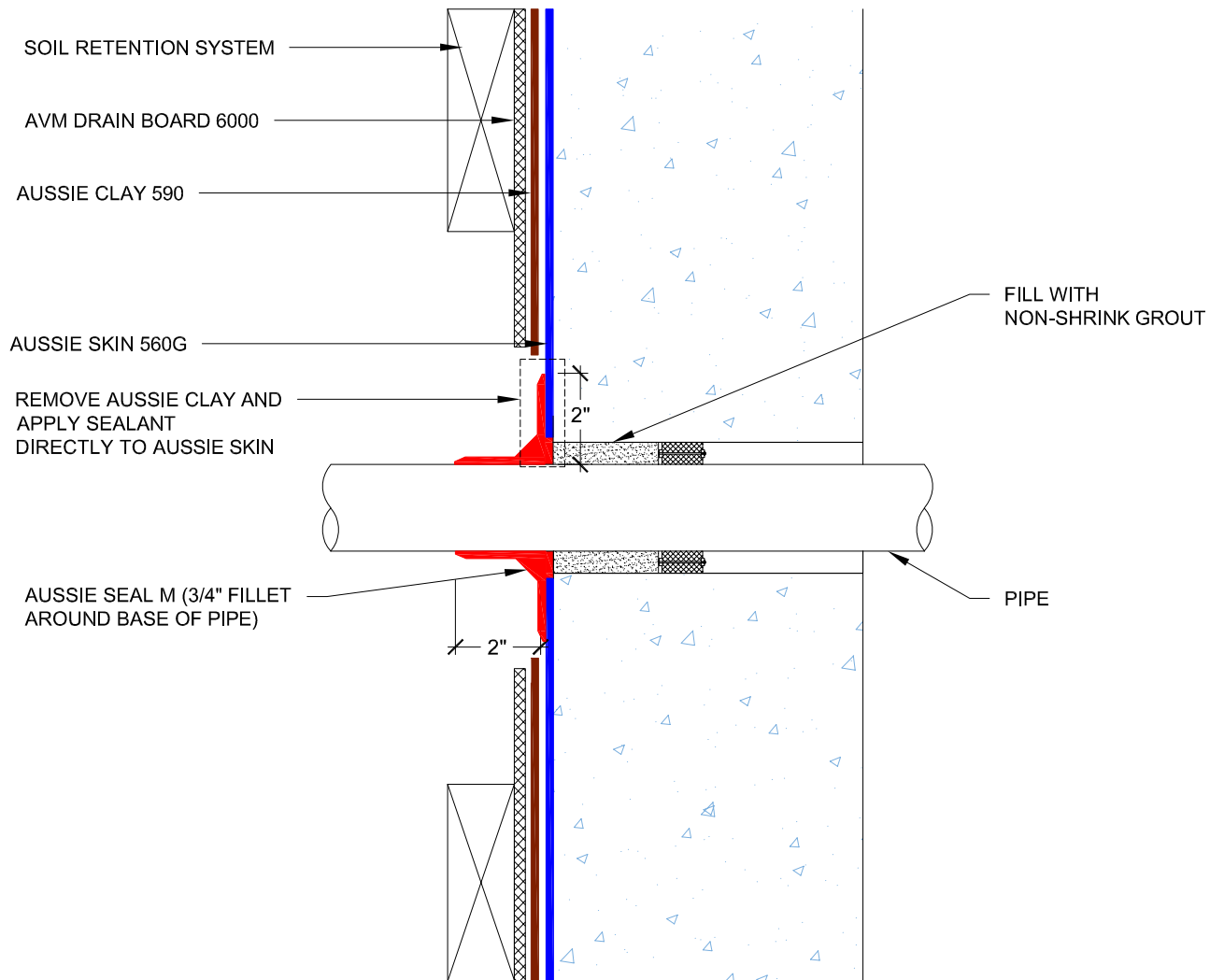
Protected by Copyright - AVM Industries, Inc. Revision Date 1/21/2020

DETAIL #:

AVM-560G-4010AC

AVM System 560G/590

Pipe Penetration Sealant on HDPE Side Aussie Clay Dual System



NOTES:

1. Aussie Skin 560G is Methane and Shot-Crete approved Heavy, Duty, Easy to Install, Puncture Resistant Sheet Waterproofing Membrane with added technologies creating excellent adhesion between the membrane and wet Concrete or Shot-Crete.
2. Aussie Clay & Aussie Clay PL are bentonite sheet membranes for waterproofing below-grade vertical and horizontal surfaces, including blindside and backfilled applications. Aussie Clay can be used with shotcrete or cast in place concrete in hydrostatic or non-hydrostatic conditions.
3. Fasten Aussie Clay with pneumatic staples or 1" washer-head fasteners placed maximum 24" on center
4. Install Aussie Clay and Aussie Clay PL with gray geotextile facing installer.
5. Overlap sheet edges 4" and stagger seams min 12"

AVM Industries, Inc.
8245 Remmet Ave, Canoga Park, CA 91304

Quality Waterproofing Products

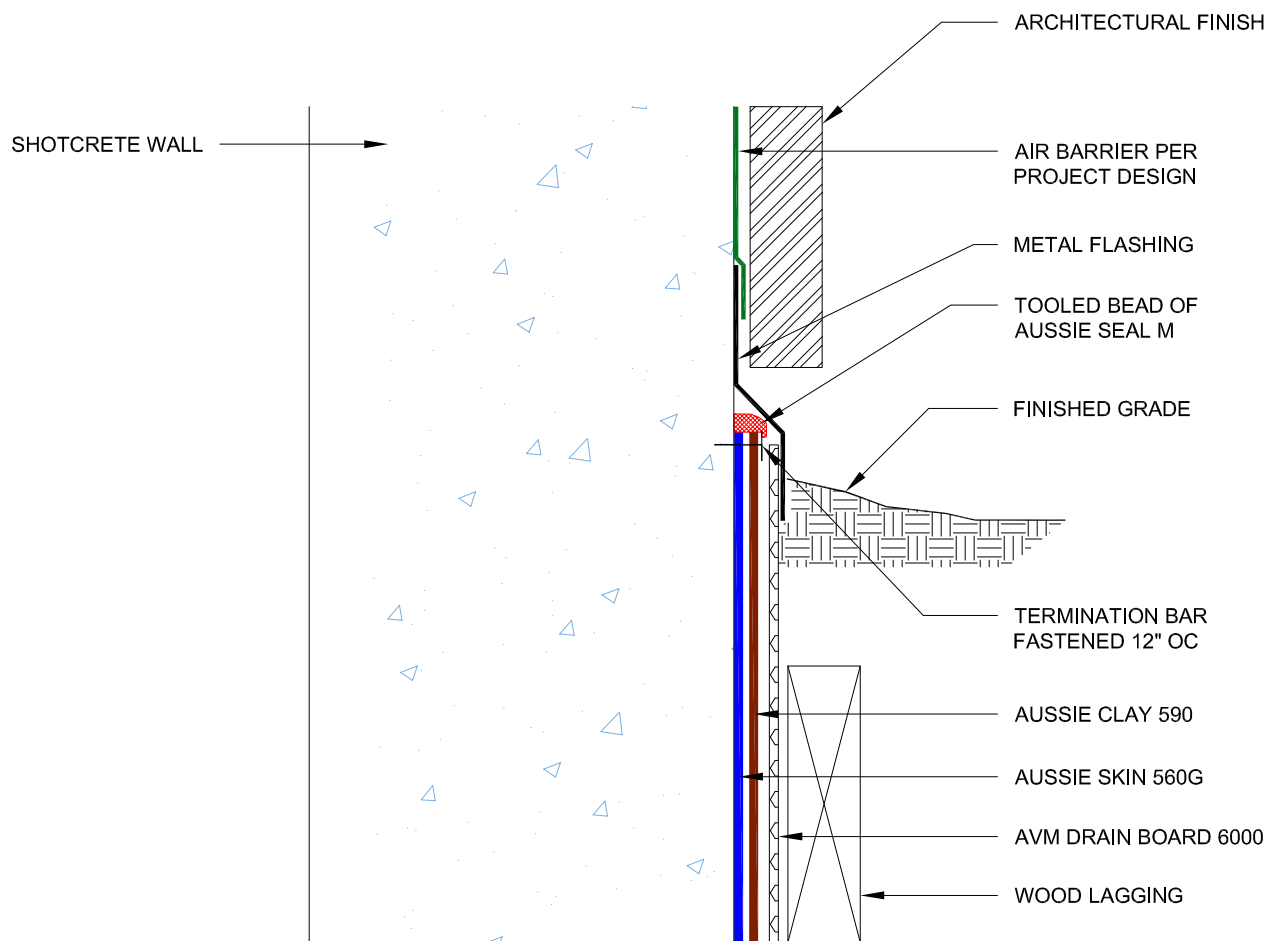
888.414.1041 818.888.0050
www.avmindustries.com

FILE NAME: 0560G-4010AC

Protected by Copyright - AVM Industries, Inc. Revision Date 1/21/2020

DETAIL #:
0560G-7502AC
AVM System 560G/590

Grade Termination - Option 2 Aussie Clay Dual System

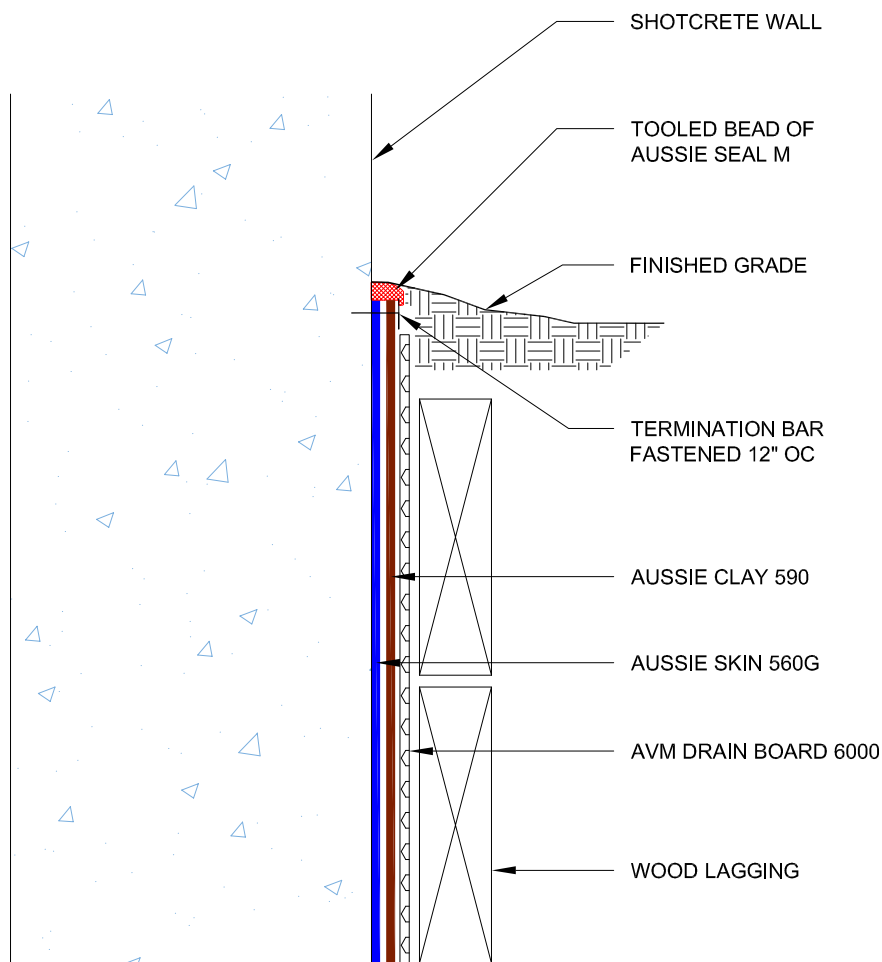


Notes:

1. Aussie Skin 560G is Methane and Shot-Crete approved Heavy, Duty, Easy to Install, Puncture Resistant Sheet Waterproofing Membrane with added technologies creating excellent adhesion between the membrane and wet Concrete or Shot-Crete.
2. Aussie Clay & Aussie Clay PL are bentonite sheet membranes for waterproofing below-grade vertical and horizontal surfaces, including blindside and backfilled applications. Aussie Clay can be used with shotcrete or cast in place concrete in hydrostatic or non-hydrostatic conditions.
3. Fasten Aussie Clay with pneumatic staples or 1" washer-head fasteners placed maximum 24" on center
4. Install Aussie Clay and Aussie Clay PL with gray geotextile facing installer.
5. Overlap sheet edges 4" and stagger seams min 12"

DETAIL #:
0560G-7505AC
AVM System 560/590

Grade Termination - Option 1 Aussie Clay Dual System



Notes:

1. Aussie Skin 560G is Methane and Shot-Crete approved Heavy, Duty, Easy to Install, Puncture Resistant Sheet Waterproofing Membrane with added technologies creating excellent adhesion between the membrane and wet Concrete or Shot-Crete.
2. Aussie Clay & Aussie Clay PL are bentonite sheet membranes for waterproofing below-grade vertical and horizontal surfaces, including blindside and backfilled applications. Aussie Clay can be used with shotcrete or cast in place concrete in hydrostatic or non-hydrostatic conditions.
3. Fasten Aussie Clay with pneumatic staples or 1" washer-head fasteners placed maximum 24" on center
4. Install Aussie Clay and Aussie Clay PL with gray geotextile facing installer.
5. Overlap sheet edges 4" and stagger seams min 12"

DETAIL #:

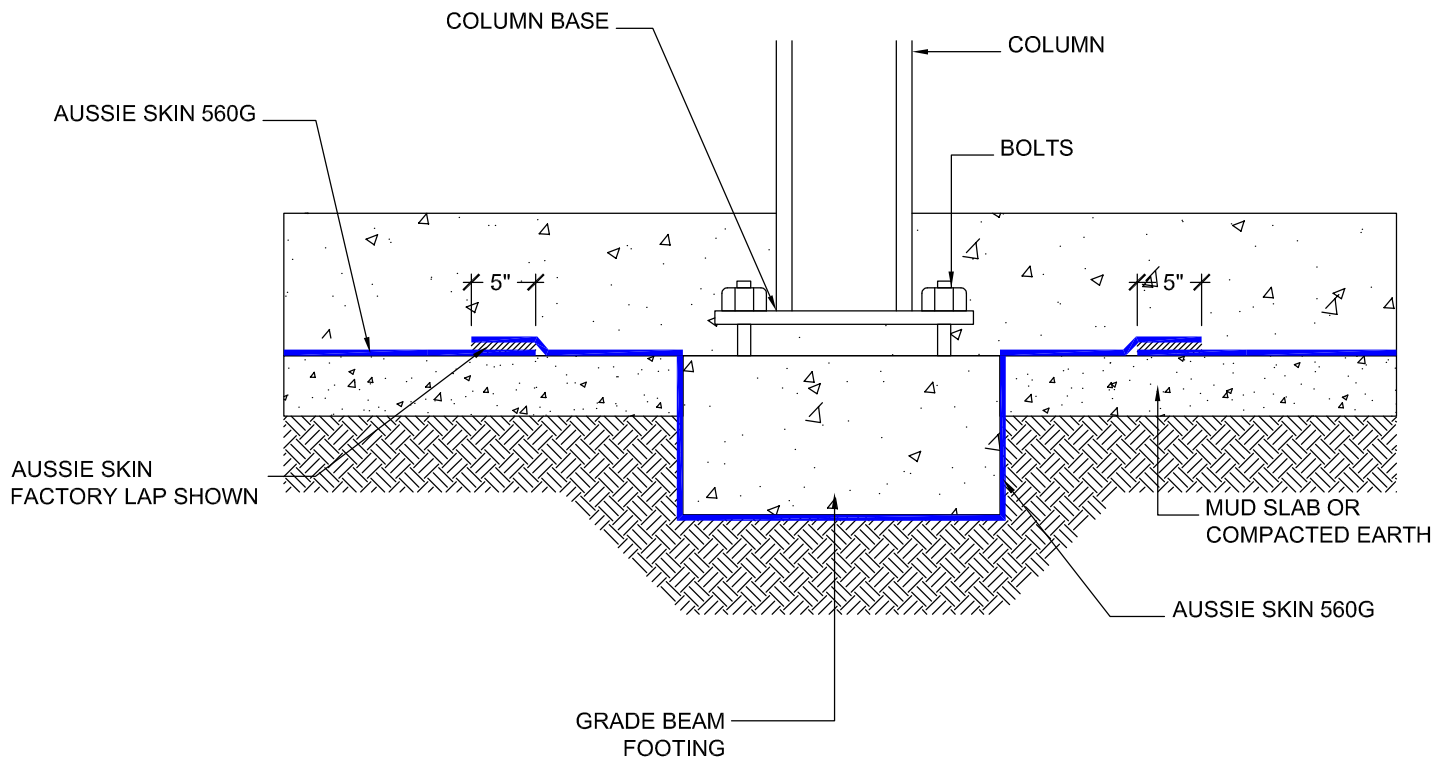
AVM-560G-2500

Aussie Skin 560G

Aussie Skin Under Grade-Beam - Hydrostatic

Aussie Skin 560G

Waterproofing and Methane Barrier



NOTES:

1. Aussie Skin 560 is a Methane and Shotcrete Approved Heavy Duty, Easy to Install, Puncture Resistant Sheet Waterproofing Membrane with added technologies creating excellent adhesion between the membrane and wet Concrete or Shot-Crete.
2. See details AVM-560G-6000 and AVM-560G-6001 for Lap Details

AVM Industries, Inc.
8245 Remmet Ave, Canoga Park, CA 91304

Quality Waterproofing Products

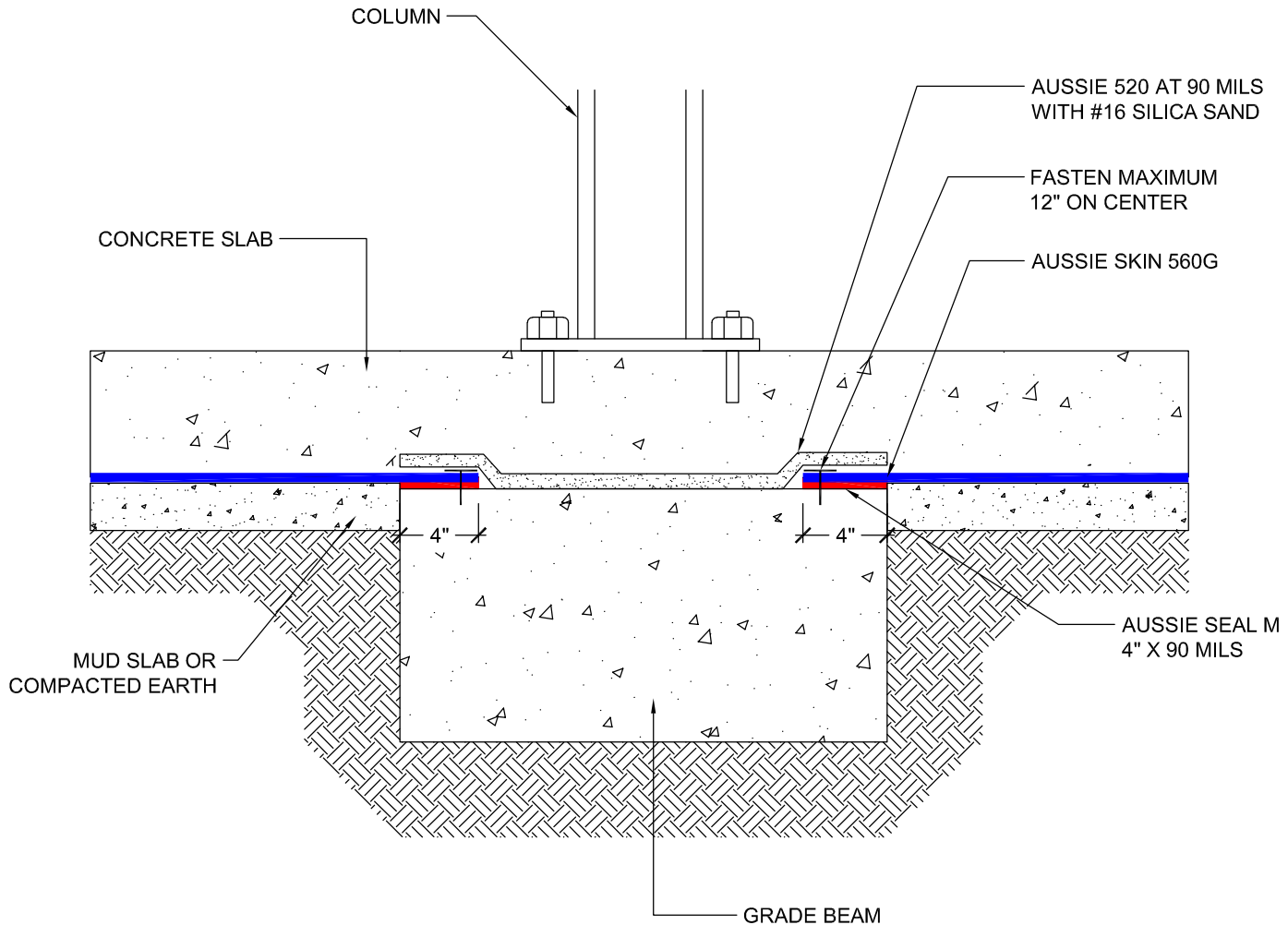
888.414.1041 818.888.0050
www.avmindustries.com

FILE NAME: 0560G-2500

Protected by Copyright - AVM Industries, Inc. Revision Date 1/21/2020

DETAIL #:
AVM-560G-2540
Aussie Skin 560G

Aussie Skin Over Grade-Beam - Hydrostatic
Aussie Skin 560G
Waterproofing and Methane Barrier



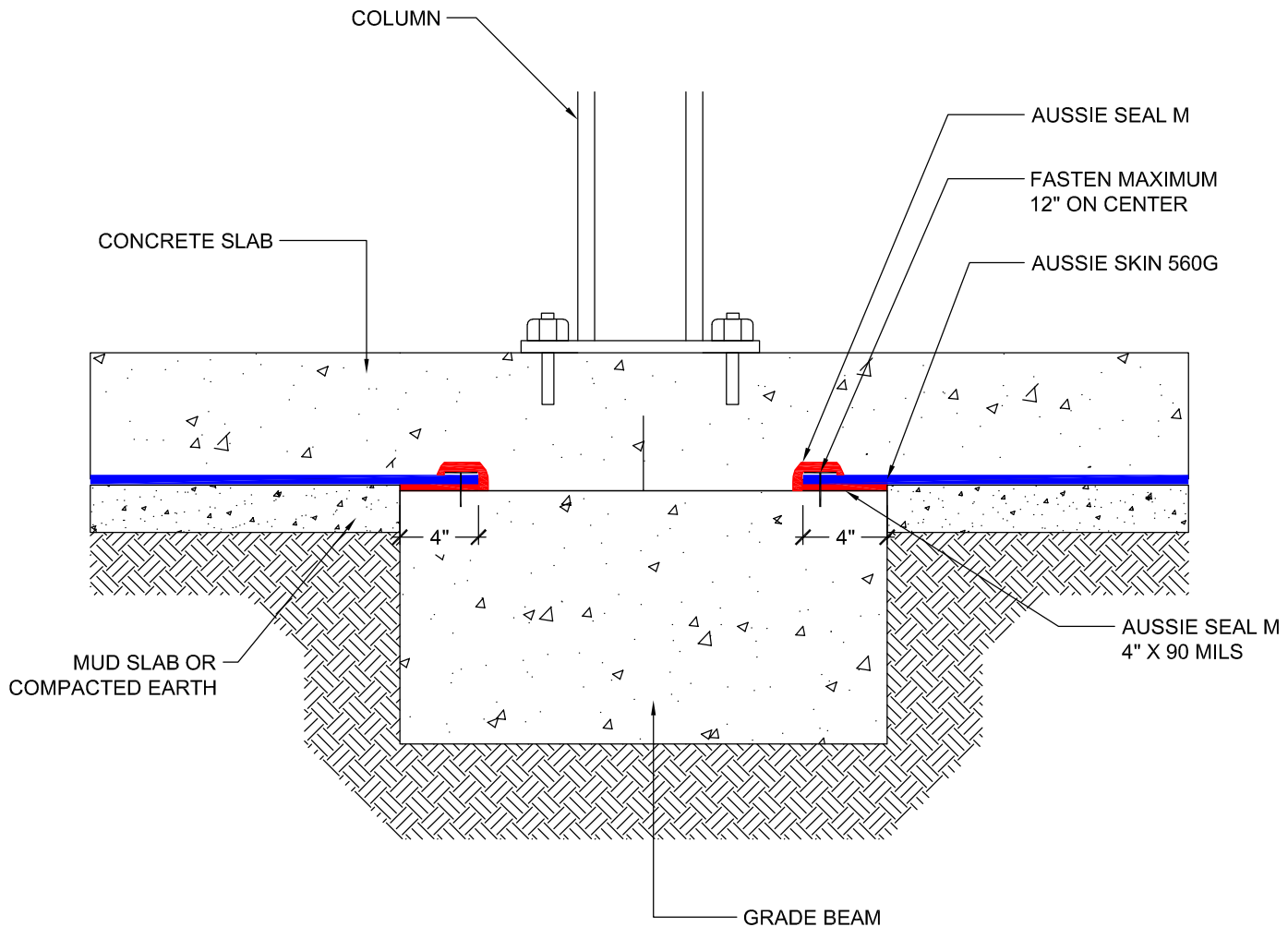
NOTES:

1. Aussie Skin 560G is a Methane and Shotcrete Approved Heavy Duty, Easy to Install, Puncture Resistant Sheet Waterproofing Membrane with added technologies creating excellent adhesion between the membrane and wet Concrete or Shot-Crete.
2. Aussie Membrane 520 must cure 24 hours prior to concrete placement.

DETAIL #:
AVM-560G-2550

AVM System 560G

Aussie Skin Over Grade-Beam
Non-Hydrostatic
Aussie Skin 560G
Waterproofing and Methane Barrier



NOTES:

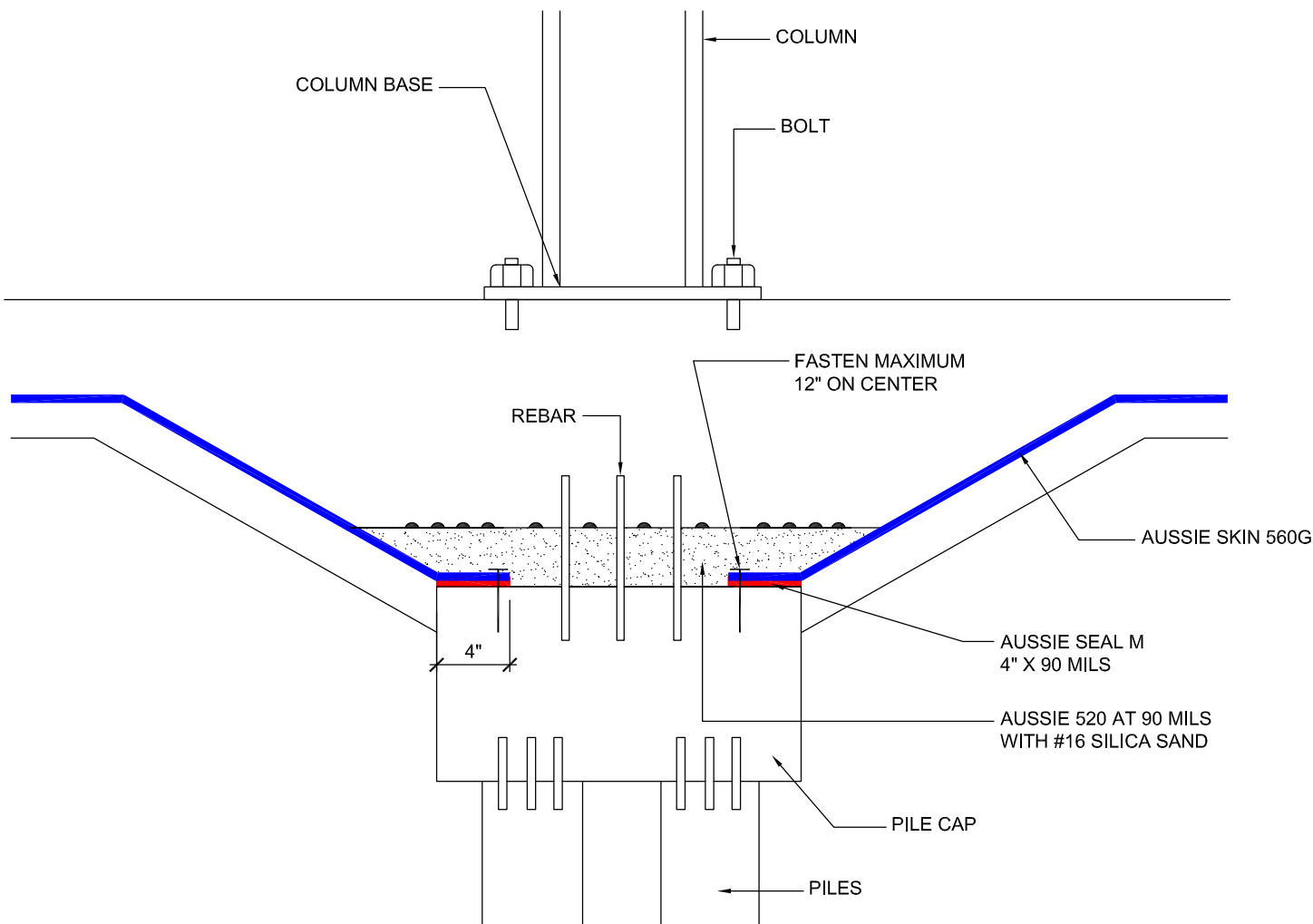
1. Aussie Skin 560G is a Methane and Shotcrete Approved Heavy Duty, Easy to Install, Puncture Resistant Sheet Waterproofing Membrane with added technologies creating excellent adhesion between the membrane and wet Concrete or Shot-Crete.

DETAIL #:

AVM-560G-2610

Aussie Skin 560G

Pile Cap Detail - Hydrostatic
Aussie Skin 560G
Waterproofing and Methane Barrier



NOTES:

1. Aussie Skin 560G is a Methane and Shotcrete Approved Heavy Duty, Easy to Install, Puncture Resistant Sheet Waterproofing Membrane with added technologies creating excellent adhesion between the membrane and wet Concrete or Shot-Crete.
2. Concrete Surface must be free of dirt, debris, release agents and anything else that might inhibit bonding.
3. Concrete surface must be structurally sound, uniform and finished with a light broom finish.
4. Aussie Membrane 520 must cure 24 hours prior to concrete placement.

AVM Industries, Inc.
8245 Remmet Ave, Canoga Park, CA 91304

Quality Waterproofing Products

888.414.1041 818.888.0050
www.avmindustries.com

FILE NAME: 0560G-2610

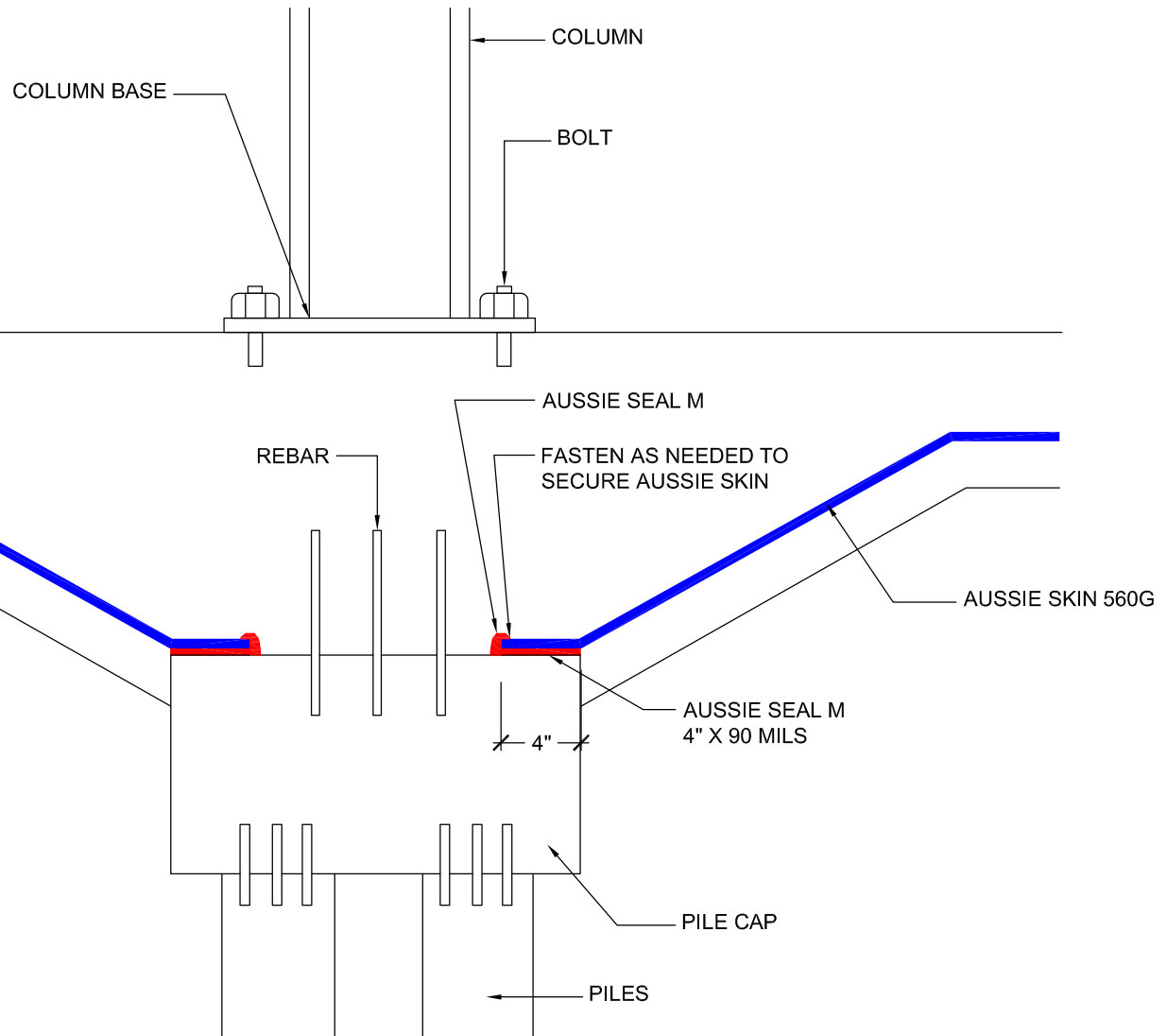
Protected by Copyright - AVM Industries, Inc. Revision Date 1/21/2020

DETAIL #:

AVM-560G-2630

Aussie Skin 560G

Pile Cap Detail - Non-Hydrostatic
Aussie Skin 560G
Waterproofing and Methane Barrier



NOTES:

1. Aussie Skin 560G is a Methane and Shotcrete Approved Heavy Duty, Easy to Install, Puncture Resistant Sheet Waterproofing Membrane with added technologies creating excellent adhesion between the membrane and wet Concrete or Shot-Crete.
2. Concrete Surface must be free of dirt, debris, release agents and anything else that might inhibit bonding.
3. Concrete surface must be structurally sound, uniform and finished with a light broom finish.
4. All fasteners must be covered with Aussie Seal M.

AVM Industries, Inc.
8245 Remmet Ave, Canoga Park, CA 91304

Quality Waterproofing Products

888.414.1041 818.888.0050
www.avmindustries.com

FILE NAME: 0560G-2630

Protected by Copyright - AVM Industries, Inc. Revision Date 1/21/2020

DETAIL #:

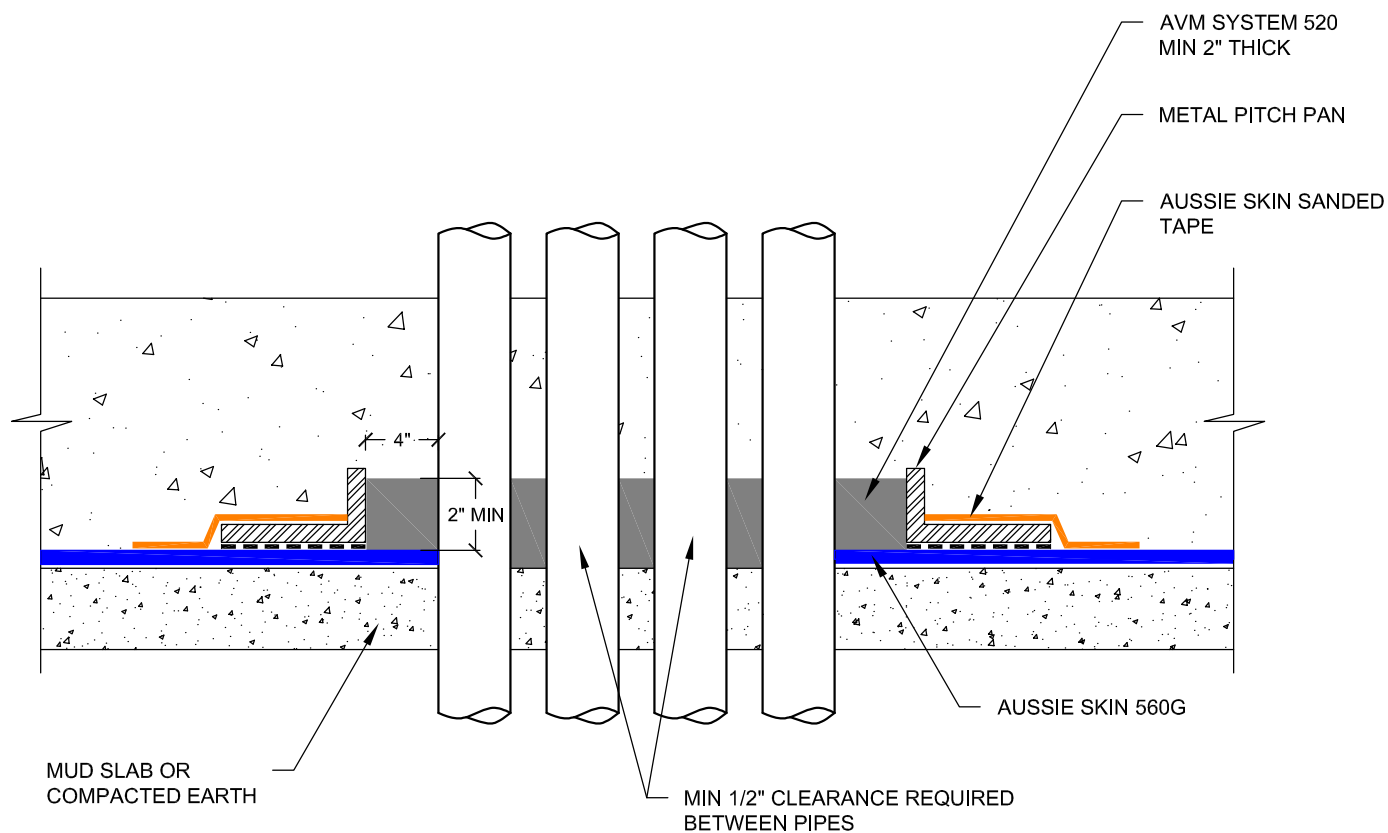
AVM-560G-2802

Aussie Skin 560G

Pipe Bank Pitch Pan

Aussie Skin 560G

Waterproofing and Methane Barrier



NOTES:

1. Aussie Skin 560G is a Methane and Shotcrete Approved Heavy Duty, Easy to Install, Puncture Resistant Sheet Waterproofing Membrane with added technologies creating excellent adhesion between the membrane and wet Concrete or Shot-Crete.
2. Aussie Membrane 520 should be cured prior to concrete placement which may take up to 72 hours. Please consult AVM if scheduling does not allow this.

AVM Industries, Inc.
8245 Remmet Ave, Canoga Park, CA 91304

Quality Waterproofing Products

888.414.1041 818.888.0050
www.avmindustries.com

FILE NAME: 0560G-2802

Protected by Copyright - AVM Industries, Inc. Revision Date 1/21/2020

DETAIL #:

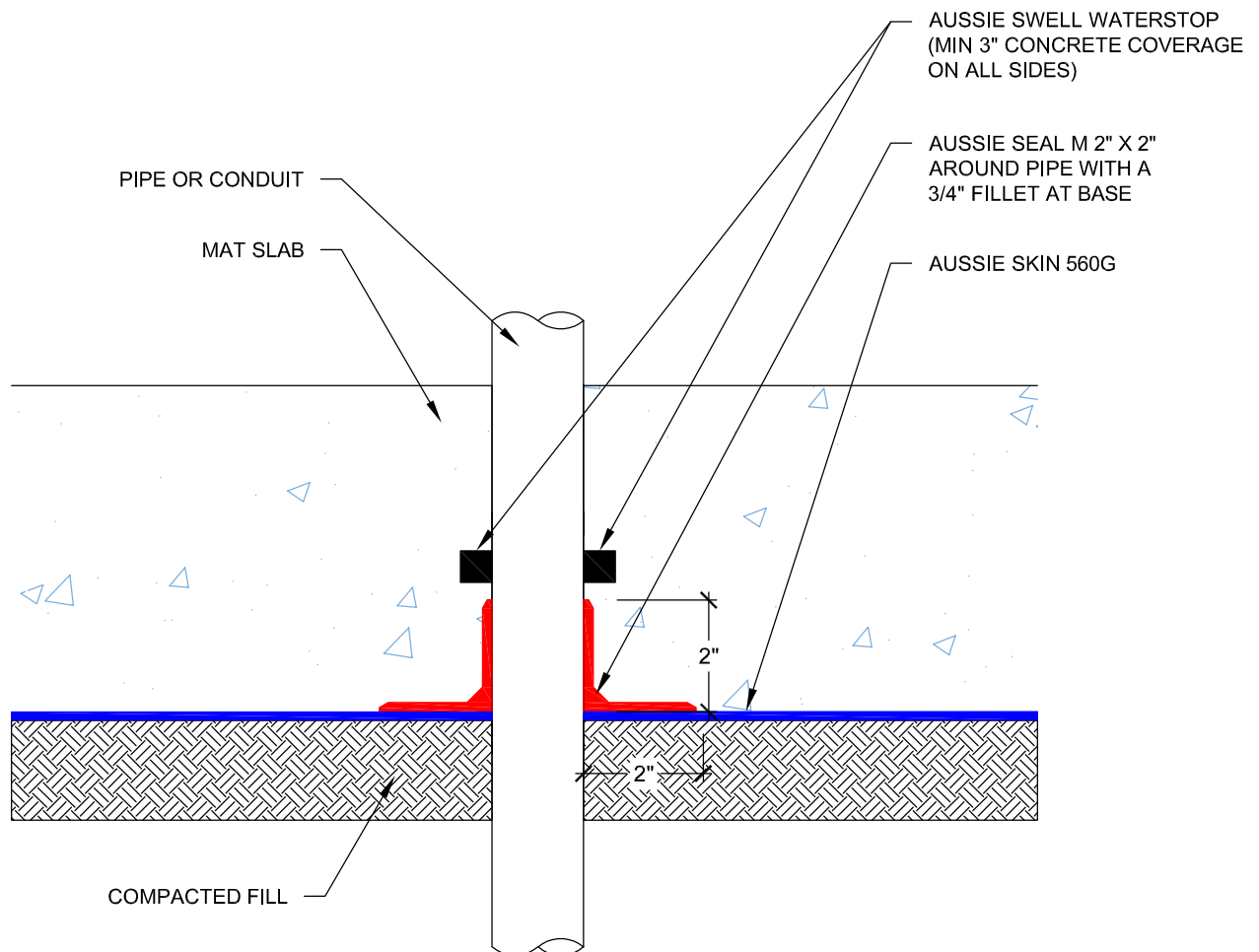
AVM-560G-2804

Aussie Skin 560G

Slab Penetration

Aussie Skin 560G

Waterproofing and Methane Barrier



NOTES:

1. Aussie Skin 560G is a Methane and Shotcrete Approved Heavy Duty, Easy to Install, Puncture Resistant Sheet Waterproofing Membrane with added technologies creating excellent adhesion between the membrane and wet Concrete or Shot-Crete.
2. Contact AVM if no drain board or protection board is specified.
3. All nails, screws etc used to hang the Aussie Skin above the water table must be non-rusting and sealed with AVM approved Sealant.
4. Allow Aussie Seal M to "skin over" prior to placing concrete.

AVM Industries, Inc.
8245 Remmet Ave, Canoga Park, CA 91304

Quality Waterproofing Products

888.414.1041 818.888.0050
www.avmindustries.com

FILE NAME: 0560G-2804

Protected by Copyright - AVM Industries, Inc. Revision Date 1/21/2020

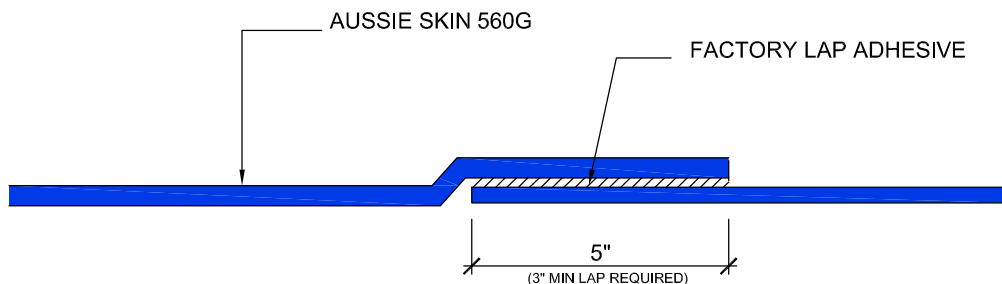
DETAIL #:
AVM-560G-6000

AVM System 560G

Lapping Detail **Aussie Skin 560G** Waterproofing and Methane Barrier



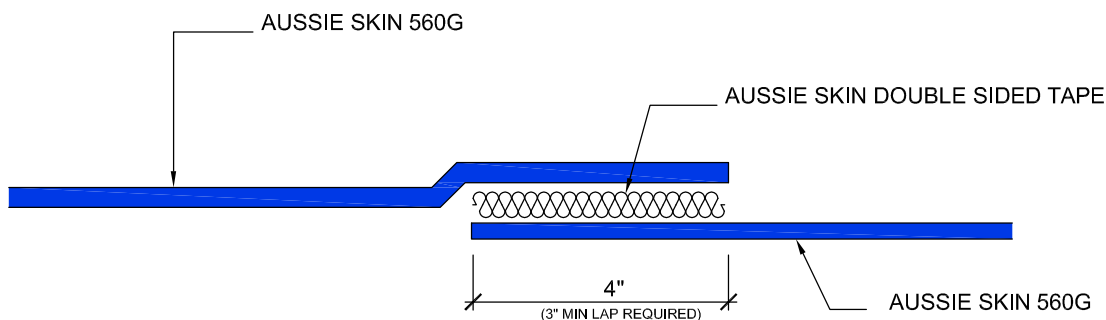
FACTORY LAP



Important Note: When installing the "Factory Lap", The Installation procedure should be as follows:

- 1) Remove the black plastic film from the factory lap to expose the adhesive.
- 2) Lay down the 2nd layer of Skin over the exposed Adhesive. (leave 1/8"-1/4" of adhesive exposed) Roll the steel roller over the 2nd layer of skin several times while applying significant pressure.
- 3) Verify seam is completely and properly bonded.

NON-FACTORY LAP WITH DOUBLE SIDED TAPE (DEFAULT NON-FACTORY LAP FOR NON-METHANE APPLICATIONS)



Important Note: When installing the "Non-Factory Lap", The Installation procedure should be as follows:

- 1) Remove the black plastic film from one side of the double-sided tape.
- 2) Lay down the Double-Sided Tape on the sanded side of the first layer of Aussie Skin.
- 3) THOROUGHLY COMPRESS THE DOUBLE-SIDED TAPE ONTO THE SANDED SIDE OF THE AUSSIE SKIN USING AVM'S APPROVED STEEL ROLLERS. (ROLL THE STEEL ROLLER OVER THE TAPE SEVERAL TIMES WHILE APPLYING SIGNIFICANT PRESSURE)
- 4) Carefully remove the clear film (2nd layer of film) from the Double-Sided Tape.
- 5) Lay down the 2nd layer of Skin over the exposed double-Sided Tape. (Leave 1/8"-1/4" of tape exposed) Roll the steel roller over the 2nd layer of skin several times while applying significant pressure.
- 6) Verify seam is completely and properly bonded.
- 7) If multiple pieces of Double-Sided Tape are needed, overlap them.

NOTES:

1. Aussie Skin 560G is a Methane and Shotcrete Approved Heavy Duty, Easy to Install, Puncture Resistant Sheet Waterproofing Membrane with added technologies creating excellent adhesion between the membrane and wet Concrete or Shot-Crete.
2. Contact AVM if no drain board or protection board is specified.
3. All nails, screws etc used to hang the Aussie Skin above the water table must be non-rusting and sealed with AVM approved Sealant.
4. For methane jobs, use the "Non-Factory Lap with Detail Strip" as the primary non-factory lap. Its ok to use the "Non-Factory Lap with Double-Sided Tape" in methane jobs when the Non-Factory Lap with Detail Strip cannot or is not practical to be used.
5. For non-methane jobs, use the "Non-Factory Lap with Double-Sided Tape" as the primary non-factory lap.

DETAIL #:

AVM-560G-6004

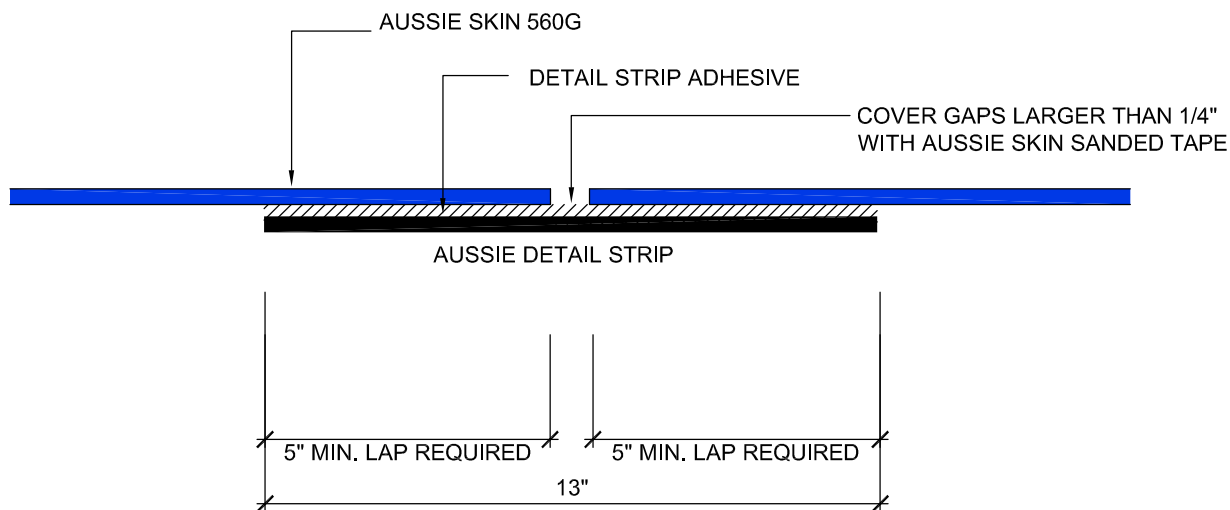
Aussie Skin 560G

Non-Factory Lap with Detail Strip
Aussie Skin 560G
Waterproofing and Methane Barrier



NON-FACTORY LAP WITH DETAIL STRIP

(DEFAULT NON-FACTORY LAP FOR METHANE APPLICATIONS)



Important Note: When installing the "Alternative Non-Factory Lap", The Installation procedure should be as follows:

- 1) Remove the black plastic film from the Detail Strip to expose the Adhesive.
- 2) Lay down the first layer of Aussie Skin over the exposed Adhesive covering half the width of the detail strip. Roll the steel roller over the seam several times while applying significant pressure.
- 3) Lay down the 2nd layer of Aussie Skin over the remaining exposed adhesive. Leave 1/8"-1/4" of adhesive exposed between the two sheets of Aussie Skin. Roll the steel roller over the seam several times while applying significant pressure.
- 4) Verify seam is complete and properly bonded.

NOTES:

1. Aussie Skin 560G is a Methane and Shotcrete Approved Heavy Duty, Easy to Install, Puncture Resistant Sheet Waterproofing Membrane with added technologies creating excellent adhesion between the membrane and wet Concrete or Shot-Crete.
2. Contact AVM if no drain board or protection board is specified.
3. All nails, screws etc used to hang the Aussie Skin above the water table must be non-rusting and sealed with AVM approved Sealant.

DETAIL #:

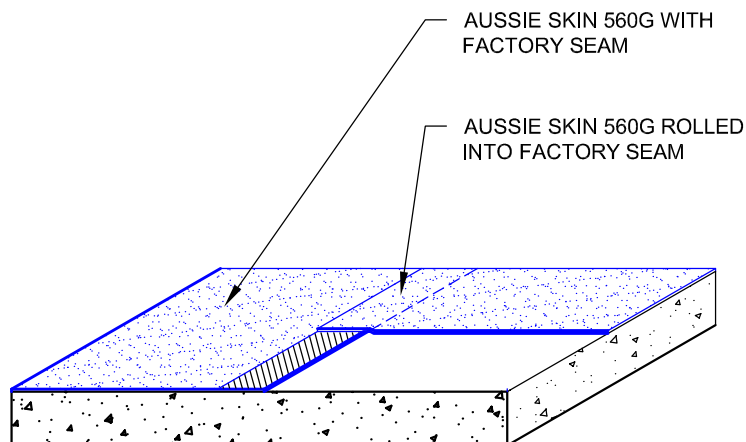
AVM-560G-6010

Aussie Skin 560G

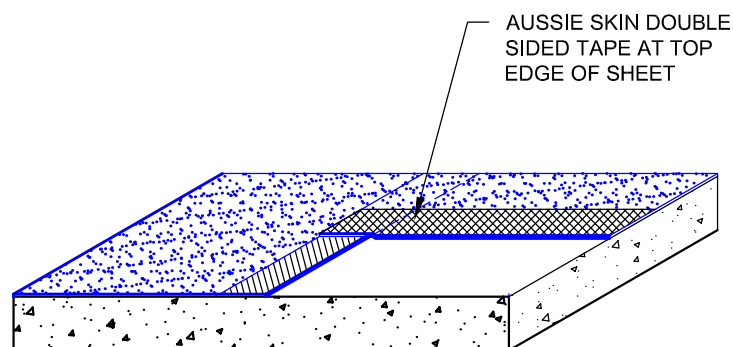
T-Lap Detail

Aussie Skin 560G

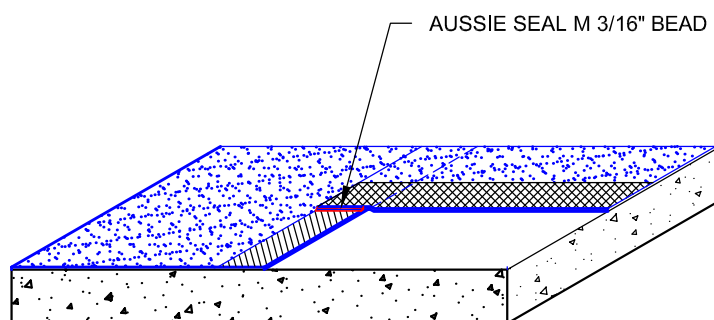
Waterproofing and Methane Barrier



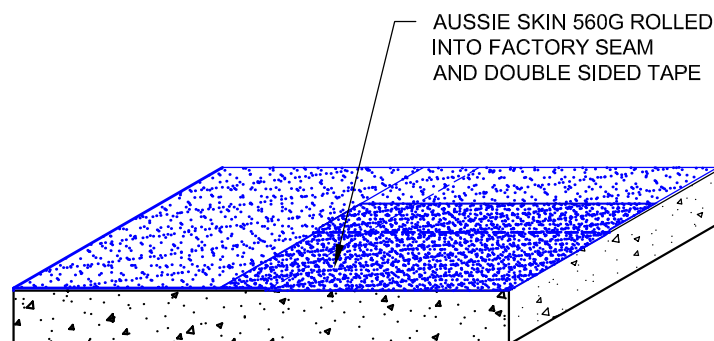
Step #1



Step #2



Step #3



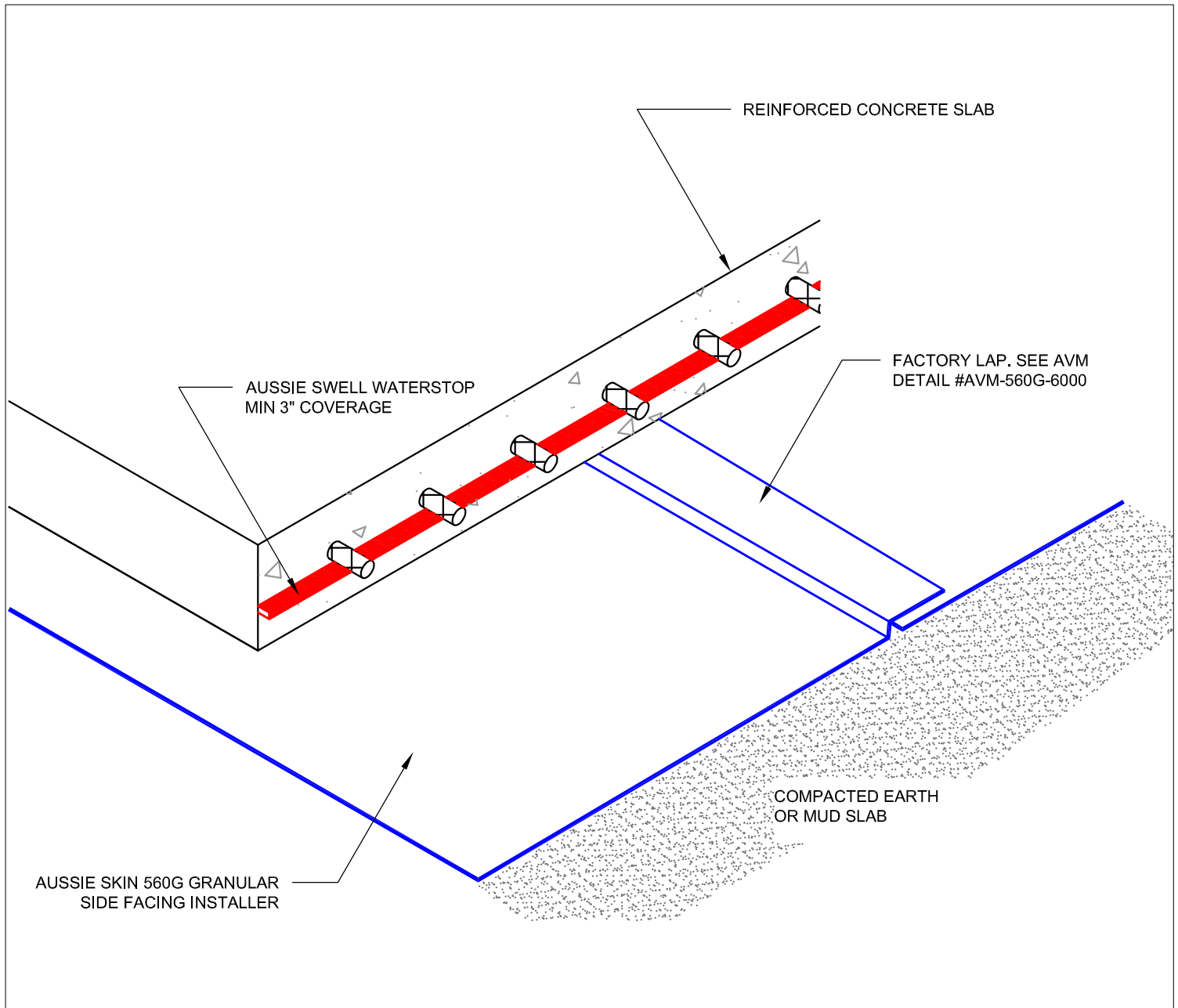
Step #4

Notes:

1. Aussie Skin 560G is a Methane and Shotcrete Approved Heavy Duty, Easy to Install, Puncture Resistant Sheet Waterproofing Membrane with added technologies creating excellent adhesion between the membrane and wet Concrete or Shot-Crete.
2. Contact AVM if no drain board or protection board is specified.
3. All nails, screws etc used to hang the Aussie Skin above the water table must be non-rusting and sealed with AVM approved Sealant.

DETAIL #:
AVM-560G-6020
Aussie Skin 560G

Under Slab Assembly
Aussie Skin 560G
Waterproofing and Methane Barrier



Notes:

1. Aussie Skin 560G is a Methane and Shotcrete Approved Heavy Duty, Easy to Install, Puncture Resistant Sheet Waterproofing Membrane with added technologies creating excellent adhesion between the membrane and wet Concrete or Shot-Crete.
2. All surfaces must be clean and sound before installing the lap joints. (Remove excess sand before applying double sided tape)
3. See details AVM-560G-6000, AVM-560G-6004, and AVM-560G-6010 for Aussie Skin Lap Details

DETAIL #:
AVM-560G-6200

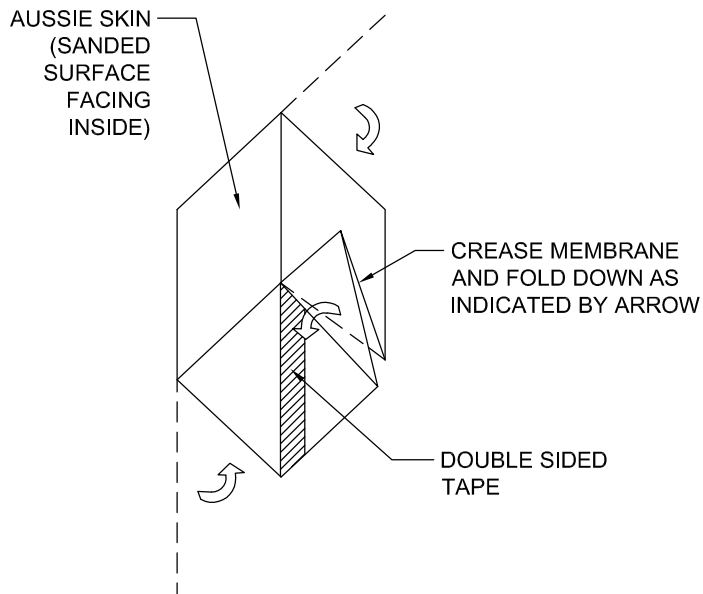
Aussie Skin 560G

Inside Corner Detail
Aussie Skin 560G
Waterproofing and Methane Barrier



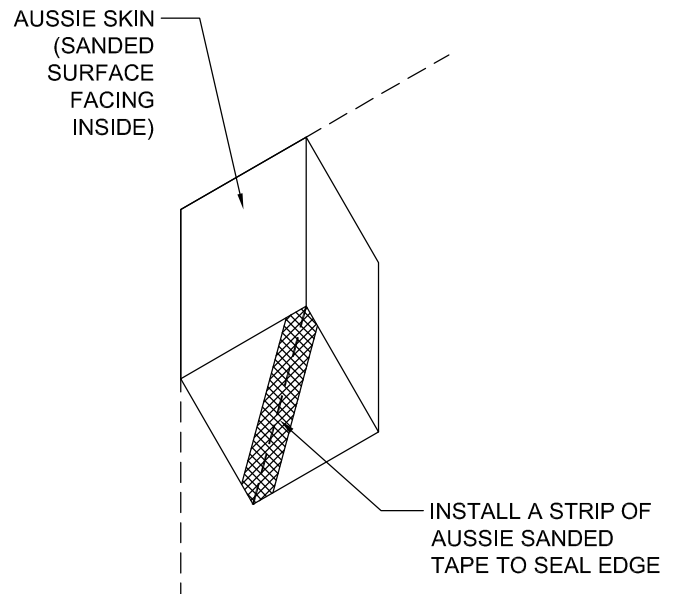
1

SANDED SURFACE FACING INSIDE



2

SANDED SURFACE FACING INSIDE



NOTES:

1. Aussie Skin 560G is a Methane and Shotcrete Approved Heavy Duty, Easy to Install, Puncture Resistant Sheet Waterproofing Membrane with added technologies creating excellent adhesion between the membrane and wet Concrete or Shot-Crete.
2. Contact AVM if no drain board or protection board is specified.
3. All nails, screws etc used to hang the Aussie Skin above the water table must be non-rusting and sealed with AVM approved Sealant.

DETAIL #:

AVM-560-6260

Aussie Skin 560

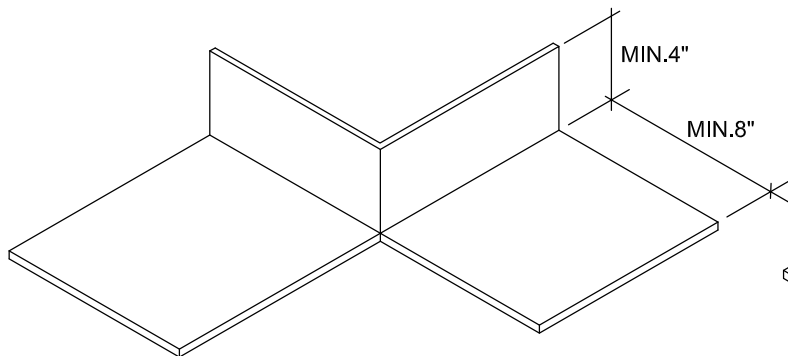
Outside Corner Detail at Bottom of Wall

Aussie Skin 560

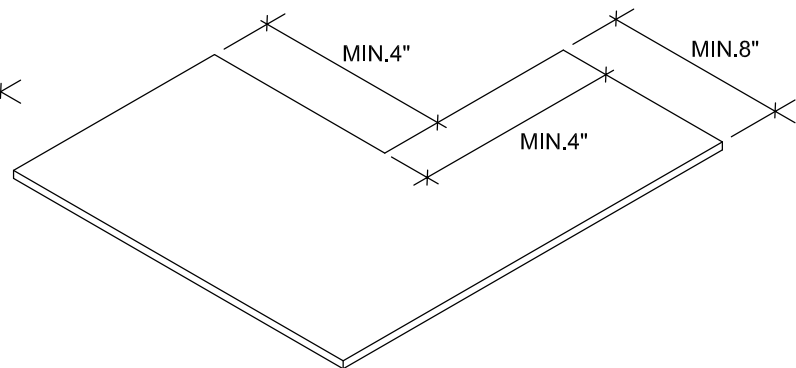
Waterproofing and Methane Barrier



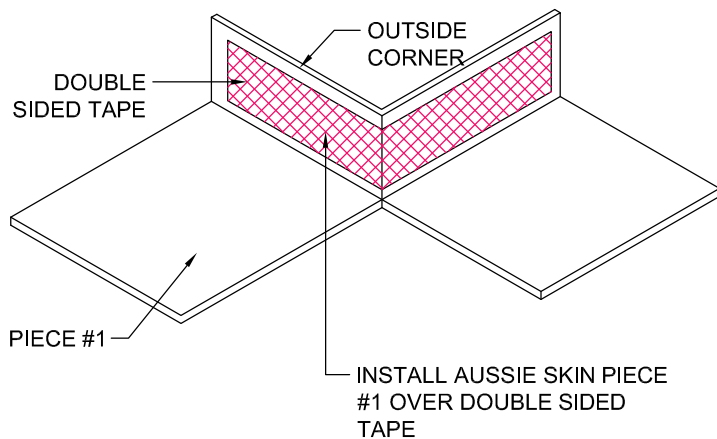
PIECE #1



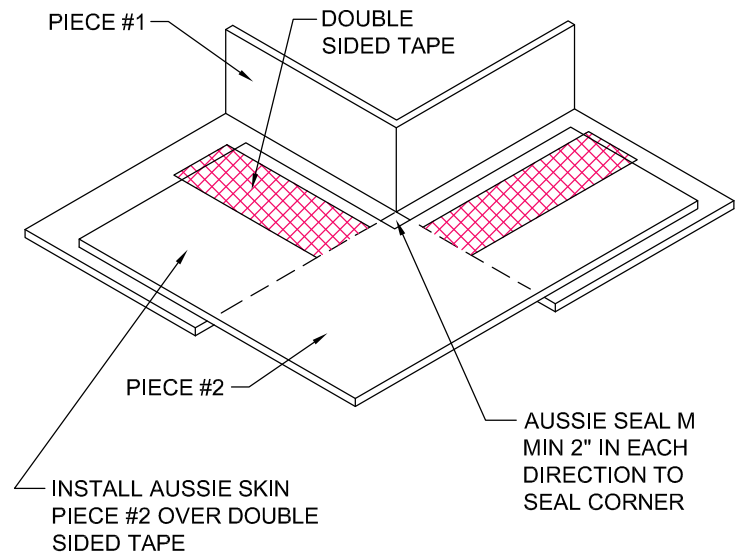
PIECE #2



STEP 1



STEP 2



NOTES:

1. Aussie Skin 560 is a Methane and Shotcrete Approved Heavy Duty, Easy to Install, Puncture Resistant Sheet Waterproofing Membrane with added technologies creating excellent adhesion between the membrane and wet Concrete or Shot-Crete.
2. Contact AVM if no drain board or protection board is specified.
3. All nails, screws etc used to hang the Aussie Skin above the water table must be non-rusting and sealed with AVM approved Sealant.

AVM Industries, Inc.
8245 Remmet Ave, Canoga Park, CA 91304

Quality Waterproofing Products

888.414.1041 818.888.0050
www.avmindustries.com

FILE NAME: 0560-6260

Protected by Copyright - AVM Industries, Inc. Revision Date 1/21/2019



Aussie Skin® Double Sided Tape

Double Sided Tape for AVM Aussie Skin® Waterproofing System

Section 071000 / 071300 / 071353 / 071354
Heavy Duty Below Grade / Under-Slab
Waterproofing Membrane

Product Name

Aussie Skin® Double Sided Tape

By

AVM Industries, Inc.
8245 Remmet Ave, Canoga Park, CA 91304
888.414.1041 818.888.0050
www.avmindustries.com

Product Description

The **AVM Aussie Skin Double Sided Tape** is a Heavy Duty, Easy to Install, double sided tape used with the AVM Aussie Skin Waterproofing system.

Where to Use

Retaining Walls, Basements, Under-Slabs, Mud-Slabs, Tunnels, etc.:

AVM Aussie Skin Double Sided Tape may be applied on both horizontal and vertical Aussie Skin waterproofing applications and is also used in detailing the Aussie Skin waterproofing system in corners, edges, penetrations, etc. For more information, refer to the **AVM Aussie Skin** documentation.

Application Method:

Pre-Applied to the **AVM Aussie Skin** sheets and also field applied as needed.

Warranty

The **AVM Aussie Skin Double Sided Tape** is part of the **AVM Aussie Skin Waterproofing System**. Refer to the **AVM Aussie Skin** warranty for details.

Delivery, Storage, and Handling

- Delivery of all the **AVM Aussie Skin Double Sided Tape** materials to the job site must be in their original sealed containers, with manufacturer's name and label intact.
- Handle and store containers in accordance with printed instructions.
- Shelf Life: One year from date of manufacture.
- Long term storage (more than a week): Store indoors at temperatures between 50°F and 90°F. On job sites, if product will be exposed to the weather for more than a week, best to cover with a tarp or other protection.
- Failure to comply with the recommended storage conditions may affect product performance and/or void the warranty.



- Keep all materials out of the reach of children.
- If irritation occurs during use, liberally flush affected areas with water. If irritation continues, see a physician immediately.

Project Conditions

- All surfaces to which the **Aussie Skin 550 Double Sided Tape** will be applied to must be sound and stable, with an even finish and free from sharp protruding items, dust, loose debris, grease, curing agents, or anything else that might damage or prevent the proper installation of the tape and/or result in improper installation of the membrane.
- The **Aussie Skin Double Sided Tape** may be applied at temperatures as low as 20°F and as high as 110°F. For applications at temperatures between 20°F to 40°F, follow the cold weather installation procedures.
- Do NOT install the **Aussie Skin Double Sided Tape** if raining or precipitation is imminent. All surfaces must be completely dry to ensure proper bonding of seams and tapes.
- Warn personnel against hazards or hazardous conditions on the job that might require special protective gear and or any other special protective or safety procedures.
- Protect adjacent surfaces which could be damaged during the application procedure.
- This system must not be used to cover Expansion Joints.

System Application

Read the **AVM Aussie Skin 550G/560G Installation Instructions** prior to installation. Application instructions vary based on application surfaces, job conditions, temperatures, etc.

Quality Control

- Visually inspect all coated surfaces to ensure a full and proper application, especially at seams, corners, drainage footings, penetrations and other hard-to-reach areas.
- All unsatisfactory areas shall be repaired prior to final acceptance.

Protection of Installed Work

- The membrane shall be protected until concrete is properly poured over it.
- ALL Double Sided tape must be covered with Aussie Skin the same day it's installed!
- Always protect the waterproofing from possible damage. If membrane becomes damaged, contact waterproofing installer or AVM before proceeding with pouring concrete.
- Once the Aussie Skin is installed (The seams have been bonded together), the Aussie Skin (including the seams) may be immediately exposed to both, rain or water. Aussie Sealant must be fully cured before it's exposed to rain or water.

Availability and Cost

Contact AVM Industries or your approved applicator for pricing and availability.

Technical Services

Technical services are available by contacting our offices at: **888.414.1041** or **818.888.0050** or visit **www.avmindustries.com**

System Specifications

See next page.

The following coverages are based on controlled tests. Actual coverages may vary.

Item/Component	Packaging	Approximate Shipping Weights	Qty per Pallet	VOC
Aussie Skin® Double Sided Tape 4"	4"x33' Roll	2.2 Lbs / Roll		N/A

No.	Item	Value
1	Permanence of Adhesives,	≥ 20
2	Thermal Resistance	70°C 2h ,no displacement, flow or dropping
3	Low Temperature Flexibility	-25°C, no cracking
4	Peeling strength (N/mm)	Aussie Skin Membranes
		≥ 1.0
		Cement Mortar Board
		≥ 0.6
		Steel
		≥ 0.6
5	Retention rate of Peeling Strength (60°C /168h)	Aussie Skin Membranes
		≥ 80
		Cement Mortar Board
		≥ 80
		Steel
		≥ 80
6	Retention rate of Peeling Strength (Ca(OH)2 /168h)	Aussie Skin Membranes
		≥ 80
		Cement Mortar Board
		≥ 80
		Steel
		≥ 80
7	Retention rate of Peeling Strength (Submersion test/168h)	Aussie Skin Membranes
		≥ 80
		Cement Mortar Board
		≥ 80
		Steel
		≥ 80

For a complete list of details in CAD or PDF, please visit our website at www.avmindustries.com.

AVM Industries, Inc.
8245 Remmet Ave, Canoga Park, CA 91304
888.414.1041 818.888.0050

Quality Waterproofing Products



www.avmindustries.com

Aussie Skin® is a registered trademark of AVM Industries, Inc.



Aussie Skin® Sanded Tape

Sanded Tape for AVM Aussie Skin® Waterproofing System

Section 071000 / 071300 / 071353 / 071354
Sheet Applied Waterproofing

Product Name

Aussie Skin® Sanded Tape

By

AVM Industries, Inc.
8245 Remmet Ave, Canoga Park, CA 91304
888.414.1041 818.888.0050
www.avmindustries.com

Product Description

The **AVM Aussie Skin Sanded Tape** is an Easy to Install, sanded tape used with the AVM Aussie Skin Waterproofing system.

Where to Use

Retaining Walls, Basements, Under-Slabs, Mud-Slabs, Tunnels, etc.:

AVM Aussie Skin Sanded Tape may be applied on both horizontal and vertical Aussie Skin waterproofing applications and is also used in detailing the Aussie Skin waterproofing system in corners, edges, penetrations, un-sanded exposed areas etc. For more information, refer to the **AVM Aussie Skin** Installation Instructions.

Application Method:

Field-Applied to the **AVM Aussie Skin** sheets as needed.

Warranty

The **AVM Aussie Skin Sanded Tape** is part of the **AVM Aussie Skin Waterproofing System**. Refer to the Aussie Skin Installation Instructions for details.

Delivery, Storage, and Handling

- Delivery of all the **AVM Aussie Skin Sanded Tape** materials to the job site must be in their original sealed packaging, with manufacturer's name and label intact.
- Handle and store containers in accordance with printed instructions. Shelf Life: One year from date of manufacture.
- Long term storage (more than a week): Store indoors at temperatures between 50°F and 90°F. On job sites, if product will be exposed to the weather for more than a week, best to cover with a tarp or other protection.
- Failure to comply with the recommended storage conditions may affect product performance and/or void the warranty
- Keep all materials out of the reach of children.
- If irritation occurs during use, liberally flush affected areas with water. If irritation continues, see a physician immediately.



Project Conditions

- All surfaces to which the **Aussie Skin Sanded Tape** is applied must be sound and stable, with an even finish and free from sharp protruding items, dust, loose debris, grease, curing agents, or anything else that might damage or prevent the proper installation of the membrane.
- The **Aussie Skin Sanded Tape** may be applied at temperatures as low as 20°F and as high as 110°F. For applications at temperatures between 20°F to 40°F, follow the cold weather installation procedures.
- Do NOT install the **Aussie Skin Sanded Tape** if raining or precipitation is imminent. All surfaces must be completely dry to ensure proper bonding of seams and tapes.
- Warn personnel against hazards or hazardous conditions on the job that might require special protective gear and or any other special protective or safety procedures.
- Protect adjacent surfaces which could be damaged during the application procedure.
- This system must not be used to cover Expansion Joints..

System Application

Read the **AVM Aussie Skin Installation Instructions** prior to installation. Application instructions vary based on application surfaces, job conditions, etc.

Quality Control

- Visually inspect all coated surfaces to ensure a full and proper application, especially at seams, corners, drainage footings, penetrations and other hard-to-reach areas.
- All unsatisfactory areas shall be repaired prior to final acceptance.

Protection of Installed Work

- The membrane shall be protected until concrete is properly poured over it.
- Do not leave the membrane exposed for more than 60 days.
- Always protect the waterproofing from possible damage. If membrane became damaged, contact waterproofing installer or AVM before proceeding with pouring concrete.
- Once the Aussie Skin is installed (The seams have been bonded together), the Aussie Skin (including the seams) may be immediately exposed to both, rain or water. Aussie Sealant must be fully cured before it's exposed to rain or water.

Availability and Cost

Contact AVM Industries or your approved applicator for pricing and availability.

Technical Services

Technical services are available by contacting our offices at: **888.414.1041** or **818.888.0050** or visit **www.avmindustries.com**

System Specifications

See next page.

The following coverages are based on controlled tests. Actual coverages may vary.

Item/Component	Packaging	Approximate Shipping Weights	Qty per Pallet	VOC
Aussie Skin® Sanded Tape 4"	3.9"x65.6' Roll	6 Lbs / Roll		N/A

For a complete list of details in CAD or PDF, please visit our website at www.avmindustries.com.

AVM Industries, Inc.
8245 Remmet Ave, Canoga Park, CA 91304
888.414.1041 818.888.0050

Quality Waterproofing Products

www.avmindustries.com



Aussie Skin® is a registered trademark of AVM Industries, Inc.



Aussie Skin® 560G

Heavy Duty HDPE Below Grade Waterproofing
and Methane Barrier Sheet Membrane

Methane Approved
Shot-Crete Approved

Section 071000 / 071300 / 071353 / 071354
Sheet Applied Waterproofing

Product Name

Aussie Skin® 560G

AVM System No.

AVM System 560G

By

AVM Industries, Inc.
8245 Remmet Ave, Canoga Park, CA 91304
888.414.1041 818.888.0050
www.avmindustries.com

Product Description

The **AVM Aussie Skin 560G** is an Extra Heavy Duty Pre-Applied 2.0 mm thick Waterproofing, Methane and Shot Crete Approved, Easy to Install, Puncture Resistant HDPE Sheet Membrane with advanced weather resistant dual factory laps, two release liners, a low reflectivity exposed surface, two non-factory lap options and additional technologies creating excellent adhesion between the membrane and wet Concrete or Shot-Crete. Once the Concrete or Shot-Crete is cured, the membrane will become fully bonded to the concrete surfaces eliminating any potential migration of water between itself and the concrete surfaces to which it is bonded.

AVM Aussie Skin 560G has a Los Angeles Research Report (LARR) Approval as a waterproofing membrane, as a methane barrier and is approved for Shot-Crete applications when installed on lagging over plywood, drain board or foam.

Where to Use

Retaining Walls, Basements, Under-Slabs, Mud-Slabs, Tunnels, etc.:

AVM Aussie Skin 560G may be applied either horizontally to smoothly prepared concrete substrates and/or compacted earth or crushed stone substrates. It may also be applied vertically to permanent formwork such as lagging. Concrete or Shot Crete is then cast directly against the adhesive side of the membrane.

Note: **AVM Aussie Skin 560G** is not suited to waterproof roofs or other internal wet areas.

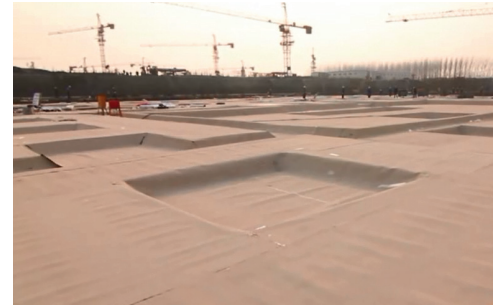
Application Method:

Pre-Applied, loosely laid.

Warranty

AVM Industries provides a standard five (5) year warranty. Ten (10) year warranties are also available. For complete warranty details, contact AVM Industries or consult with your applicator. Shot-Crete to conform to ACI 506 Standards.

Delivery, Storage, and Handling



- Delivery of all the **AVM Aussie Skin 560G** materials to the job site must be in their original sealed containers, with manufacturer's name and label intact.
- Handle and store containers in accordance with printed instructions. Shelf Life: One year from date of manufacture.
- Long term storage (more than a week): Store indoors at temperatures between 50°F and 90°F. On job sites, if product will be exposed to the weather for more than a week, best to cover with a tarp or other protection.
- Failure to comply with the recommended storage conditions may affect product performance and/or void the warranty.
- Keep all materials out of the reach of children.
- If irritation occurs during use, liberally flush affected areas with water. If irritation continues, see a physician immediately.

Project Conditions

- All surfaces to which the Aussie Skin 560G is applied must be sound and stable, with an even finish and free from sharp protruding items, dust, loose debris, grease, curing agents, or anything else that might damage or prevent the proper installation of the membrane.
- The Aussie Skin may be applied at temperatures as low as 20°F and as high as 110°F. For applications at temperatures between 20°F to 40°F, follow the cold weather installation procedures.
- Do NOT install the Aussie Skin if raining or precipitation is imminent. All surfaces must be completely dry to ensure proper bonding of seams and tapes. (Note, once the Aussie Skin system is completely and properly installed, concrete can be poured on it when its surfaces are damp or wet as long, as there is no ponding water)
- Warn personnel against hazards or hazardous conditions on the job that might require special protective gear and or any other special protective or safety procedures.
- Protect adjacent surfaces which could be damaged during the application procedure.
- This system must not be used to cover Expansion Joints.

System Application

Read the **AVM Aussie Skin 560G** Training Manual/Installation Instructions Prior to Installation. Application instructions vary based on application surfaces, job conditions, temperatures, etc. When installed as a methane barrier, continuous inspection by a registered deputy inspector certified by AVM Industries and registered in accordance with the requirements specified in Section 91.1704 of the Los Angeles Municipal Code for special inspections is required.

Quality Control

- Visually inspect all surfaces to ensure a full and proper application, especially at seams, corners, drainage footings, penetrations and other hard-to-reach areas.
- All unsatisfactory areas shall be repaired prior to final acceptance.

Protection of Installed Work

- The membrane shall be protected until concrete is properly poured over it.
- Do not leave the membrane exposed to U.V. for more than 60 days.
- Always protect the waterproofing from possible damage. If membrane becomes damaged, contact waterproofing installer or AVM before proceeding with pouring concrete.
- Once the Aussie Skin is installed (The seams have been bonded together), the Aussie Skin (including the seams) may be immediately exposed to both, rain or water.

Availability and Cost

Contact AVM Industries or your approved applicator for pricing and availability.

Technical Services

Technical services are available by contacting our offices at: 888.414.1041 or 818.888.0050 or visit www.avmindustries.com

System Specifications

See next page.

PATENT PENDING: Some features of our product or assembly are protected under patent laws by one or more pending US patent(s).

The following coverages are based on controlled tests. Actual coverages may vary.

Item/Component	Packaging	Approximate Shipping Weights	Qty per Pallet	VOC
Aussie Skin 560G Membrane 2M (100 Mils)	6.56'x65.6' Roll (430 sqft)	211 lbs (96 kg) / Roll	18 Rolls/Pallet	N/A
Aussie Skin Detail Strip 560G	13.1"x65.6' Roll	30.8 lbs (14 kg) / Roll		N/A
Aussie Skin Double Sided Tape 4"	4"x33' Roll	2.2 lbs / Roll		N/A
Aussie Skin Sanded Tape 4"	3.9"x65.6' Roll	6 lbs / Roll		N/A

LO21 Waterproofing Test Results	Test Results	Test Requirements	Test Method
Puncture Resistance	239 Lbf	Min 40 Lbs	ASTM E154
Hydrostatic Pressure Resistance	192 PSI	As Tested	ASTM D751
Lateral Water Migration Resistance	231 feet (71 M) of hydrostatic head pressure	Pass	ASTM D ⁵³⁸⁵ Modified ¹
Resistance to Hydrostatic Head	231 feet (71 M) of hydrostatic head pressure	Pass	ASTM D5385
Adhesion to Concrete and Masonry	10 Pounds	Min 5 Pounds	ASTM D903
Tension & Elongation: Machine Direction	1061 %	Min 250%	ASTM D412
Tension & Elongation: Cross Machine Direction	1050 %	Min 250%	ASTM D412
Accelerated Aging	No considerable reduction in Tension and Elongation of Aged Specimens	Pass. No considerable reduction in either	ASTM G23 & G153
Resistance to Decay (Weight Loss)	0.8%	Max 10%	ASTM E154
Resistance to Decay (Permeance Loss)	0%	Max 10%	ASTM E154
Water Vapor Transmission	0.016 Perms	Max 0.1 Perms	ASTM E96
Water Vapor Transmission after Decay	0.016 Perms	Max 0.1 Perms	ASTM E96
Low temperature flexibility	Unaffected at -29°C	Not Listed	ASTM D1970
Shear strength of joints	14.5 (N/mm)	Not Listed	ASTM D1876
Water Absorption	0.059%	As Tested	ASTM D570
PCE Diffusion Coefficient	6.62E-13	Report Results	ASTM 96/96M-16
TCE Diffusion Coefficient	1.51E-12	Report Results	ASTM 96/96M-16
Benzene Diffusion Coefficient	1.45E-12	Report Results	ASTM 96/96M-16

1. Lateral water migration resistance is tested by casting concrete and shot-crete against membrane with a hole and subjecting the membrane to hydrostatic head pressure with water. The test measures the resistance of lateral water migration between the concrete and the membrane. Tests were performed by an independent certified lab. (This test is in addition to the LO21 testing requirements)

Shot-Crete Test Results	Test Method	Results	Requirements
Installation over Plywood or directly on the Lagging			
Waterproof Integrity of Side (factory) Lap, overlap installed over 2" plywood joint with nails in laps	ASTM D 5385	Pass	No water leakage detected up to 100 PSI
Waterproof Integrity of End (non-factory) Lap, overlap installed over 2" plywood joint	ASTM D 5385	Pass	
Waterproof Integrity of Side (factory) Lap, overlap installed over 2" plywood joint without nails in laps	ASTM D 5385	Pass	
Puncture Integrity at Screw Protrusion, Membrane installed over 1/4" protruding #8 bugle head wood screw	Visual Inspection	Pass	No puncture detected
Installation over Lagging 0.5" EPS Insulation Board (Foam)			
Waterproof Integrity of Side (factory) Lap, overlap installed over EPS Foam Board located over 2" lagging joint with nails in laps	ASTM D 5385	Pass	No water leakage detected up to 100 PSI
Waterproof Integrity of End (non-factory) Lap, overlap installed over EPS Foam Board located over 2" lagging joint	ASTM D 5385	Pass	
Waterproof Integrity of Side (non-factory) Lap, overlap installed over EPS Foam Board located over 2" lagging joint; Joint without nails in laps	ASTM D 5385	Pass	
Puncture Integrity at Nail Protrusion Membrane installed over 1/4" protruding nail with 7/32" dia. head	Visual Inspection	Pass	No puncture detected
Installation over Drain Board			
Waterproof Integrity of Side (factory) Lap, overlap installed over Drain Board located over 2" lagging joint with nails in laps	ASTM D 5385	Pass	No water leakage detected up to 100 PSI
Waterproof Integrity of End (non-factory) Lap, overlap installed over Drain Board located over 2" lagging joint	ASTM D 5385	Pass	
Waterproof Integrity of Side (non-factory) Lap, overlap installed over Drain Board located over 2" lagging joint; Joint without nails in laps	ASTM D 5385	Pass	
Puncture Integrity at Nail Protrusion Membrane installed over 1/4" protruding nail with 7/32" dia. head	Visual Inspection	Pass	No puncture detected

Note: "Test Requirements" as listed in **Los Angeles City Test Protocol LO21, Acceptance Criteria for Below-Grade Exterior Damp-Proofing and Waterproofing Materials dated May 2004 And Los Angeles City Shot-Crete Test Protocol dated April 26, 2016.**

For a complete list of details in CAD or PDF, please visit our website at www.avmindustries.com.

AVM Industries, Inc.
8245 Remmet Ave, Canoga Park, CA 91304
888.414.1041 818.888.0050

Quality Waterproofing Products



www.avmindustries.com

Aussie Skin® is a registered trademark of AVM Industries, Inc.



Aussie Skin® Detail Strip 560G

Heavy Duty HDPE Below Grade Waterproofing
and Methane Barrier Sheet Membrane

Methane Approved
Shot-Crete Approved

Retaining Walls Spec

Section 071000 / 071300 / 071353 / 071354
Sheet Applied Waterproofing

Product Name

Aussie Skin® 560G Detail Strip

By

AVM Industries, Inc.
8245 Remmet Ave, Canoga Park, CA 91304
888.414.1041 818.888.0050
www.avmindustries.com

Product Description

AVM Aussie Skin Detail Strip 560G is a narrow roll (13.1" wide) of the Aussie Skin 560G (without sand) used for detailing corners and other small or hard to reach areas

Where to Use

Retaining Walls, Basements, Under-Slabs,
Mud-Slabs, Tunnels, etc.:

AVM Aussie Skin Detail Strip 560G may be applied on both horizontal and vertical surfaces and is primarily used in detailing the Aussie Skin 560G waterproofing system in corners, edges, penetrations, etc. For more information, refer to the Aussie Skin 560G waterproofing system documentation.

Application Method:

Pre-Applied, loosely laid.

Warranty

The AVM Aussie Skin Detail Strip 560G is part of the AVM Aussie Skin 560G Waterproofing System. Refer to the Aussie Skin warranty for details. Shot-Crete to conform to ACI 506 Standards.

Delivery, Storage, and Handling

- Delivery of all the AVM Aussie Skin Detail Strip 560G materials to the job site must be in their original sealed packaging, with manufacturer's name and label intact.
- Handle and store containers in accordance with printed instructions. Shelf Life: One year from date of manufacture.
- Long term storage (more than a week): Store indoors at temperatures between 50°F and 90°F. On job sites, if product will be exposed to the weather for more than a week, best to cover with a tarp or other protection.
- Failure to comply with the recommended storage conditions may affect product performance and/or void the warranty.
- Keep all materials out of the reach of children.
- If irritation occurs during use, liberally flush affected areas with water. If irritation continues, see a physician immediately.



Project Conditions

- All surfaces to which the Aussie Skin Detail Strip will be applied to must be sound and stable, with an even finish and free from sharp protruding items, dust, loose debris, grease, curing agents, or anything else that might damage or prevent the proper installation of the tape and/or result in improper installation of the membrane.
- The Aussie Skin Detail Strip may be applied at temperatures as low as 20°F and as high as 110°F. For applications at temperatures between 20°F to 40°F, follow the cold weather installation procedures.
- Do NOT install the Aussie Skin if raining or precipitation is imminent. All surfaces must be completely dry to ensure proper bonding of seams and tapes. (Note, once the Aussie Skin system is completely and properly installed, concrete can be poured on it when its surfaces are damp or wet as long, as there is no ponding water)
- Warn personnel against hazards or hazardous conditions on the job that might require special protective gear and or any other special protective or safety procedures.
- Protect adjacent surfaces which could be damaged during the application procedure.
- This system must not be used to cover Expansion Joints.

System Application

Read the AVM Aussie Skin Installation Instructions Prior to Installation. Application instructions vary based on application surfaces, job conditions, etc.

Quality Control

- Visually inspect all surfaces to ensure a full and proper application, especially at seams, corners, drainage footings, penetrations and other hard-to-reach areas.
- All unsatisfactory areas shall be repaired prior to final acceptance.

Protection of Installed Work

- The membrane shall be protected until concrete is properly poured over it.
- Do not leave the membrane exposed to U.V. for more than 60 days.
- Always protect the waterproofing from possible damage. If membrane becomes damaged, contact waterproofing installer or AVM before proceeding with pouring concrete.
- Once the Aussie Skin is installed (The seams have been bonded together), the Aussie Skin (including the seams) may be immediately exposed to both, rain or water.

Availability and Cost

Contact AVM Industries or your approved applicator for pricing and availability.

Technical Services

Technical services are available by contacting our offices at: 888.414.1041 or 818.888.0050 or visit www.avmindustries.com

System Specifications

See next page.

The following coverages are based on controlled tests. Actual coverages may vary.

Item/Component	Packaging	Approximate Shipping Weights	Qty per Pallet	VOC
Aussie Skin 560G Membrane 2M (100 Mils)	6.56'x65.6' Roll (430 sq.ft.)	211 lbs (96 kg) / Roll	18 Rolls/Pallet	N/A
Aussie Skin Detail Strip 560G	13.1"x65.6' Roll	30.8 lbs (14 kg) / Roll		N/A
Aussie Skin Double Sided Tape 4"	4"x33' Roll	2.2 lbs / Roll		N/A
Aussie Skin Sanded Tape 4"	3.9"x65.6' Roll	6 lbs / Roll		N/A

L021 Waterproofing Test Results	Test Results	Test Requirements	Test Method
Puncture Resistance	239 Lbf	Min 40 Lbs	ASTM E154
Hydrostatic Pressure Resistance	192 PSI	As Tested	ASTM D751
Lateral Water Migration Resistance	231 feet (71 M) of hydrostatic head pressure	Pass	ASTM D5385 Modified 1
Resistance to Hydrostatic Head	231 feet (71M) of hydrostatic head pressure	Pass	ASTM D5385
Adhesion to Concrete and Masonry	10 Pounds	Min 5 Pounds	ASTM D903
Tension & Elongation: Machine Direction	1061 %	Min 250%	ASTM D412
Tension & Elongation: Cross Machine Direction	1050 %	Min 250%	ASTM D412
Accelerated Aging	No considerable reduction in Tension and Elongation of Aged Specimens	Pass. No considerable reduction in either	ASTM G23 & G153
Resistance to Decay (Weight Loss)	0.8%	Max 10%	ASTM E154
Resistance to Decay (Permeance Loss)	0%	Max 10%	ASTM E154
Water Vapor Transmission	0.016 Perms	Max 0.1 Perms	ASTM E96
Water Vapor Transmission after Decay	0.016 Perms	Max 0.1 Perms	ASTM E96
Low temperature flexibility	Unaffected at -29°C	Not Listed	ASTM D1970
Shear strength of joints	14.5 (N/mm)	Not Listed	ASTM D1876
Water Absorption	0.059%	As Tested	ASTM D570
PCE Diffusion Coefficient	6.62E-13	Report Results	ASTM 96/96M-16
TCE Diffusion Coefficient	1.51E-12	Report Results	ASTM 96/96M-16
Benzene Diffusion Coefficient	1.45E-12	Report Results	ASTM 96/96M-16

1. Lateral water migration resistance is tested by casting concrete and shot-crete against membrane with a hole and subjecting the membrane to hydrostatic head pressure with water. The test measures the resistance of lateral water migration between the concrete and the membrane. Tests were performed by an independent certified lab. (This test is in addition to the L021 testing requirements)

Shot-Crete Test Results	Test Method	Results	Requirements
Installation over Plywood or directly on the Lagging			
Waterproof Integrity of Side (factory) Lap, overlap installed over 2" plywood joint with nails in laps	ASTM D 5385	Pass	No water leakage detected up to 100 PSI
Waterproof Integrity of End (non-factory) Lap, overlap installed over 2" plywood joint	ASTM D 5385	Pass	
Waterproof Integrity of Side (factory) Lap, overlap installed over 2" plywood joint without nails in laps	ASTM D 5385	Pass	
Puncture Integrity at Screw Protrusion, Membrane installed over 1/4" protruding #8 bugle head wood screw	Visual Inspection	Pass	No visual detection of puncture
Installation over Lagging 0.5" EPS Insulation Board (Foam)			
Waterproof Integrity of Side (factory) Lap, overlap installed over EPS Foam Board located over 2" lagging joint with nails in laps	ASTM D 5385	Pass	No water leakage detected up to 100 PSI
Waterproof Integrity of End (non-factory) Lap, overlap installed over EPS Foam Board located over 2" lagging joint	ASTM D 5385	Pass	
Waterproof Integrity of Side (non-factory) Lap, overlap installed over EPS Foam Board located over 2" lagging joint; Joint without nails in laps	ASTM D 5385	Pass	
Puncture Integrity at Nail Protrusion Membrane installed over 1/4" protruding nail with 7/32" dia. head	Visual Inspection	Pass	No visual detection of puncture
Installation over Drain Board			
Waterproof Integrity of Side (factory) Lap, overlap installed over Drain Board located over 2" lagging joint with nails in laps	ASTM D 5385	Pass	No water leakage detected up to 100 PSI
Waterproof Integrity of End (non-factory) Lap, overlap installed over Drain Board located over 2" lagging joint	ASTM D 5385	Pass	
Waterproof Integrity of Side (non-factory) Lap, overlap installed over Drain Board located over 2" lagging joint; Joint without nails in laps	ASTM D 5385	Pass	
Puncture Integrity at Nail Protrusion Membrane installed over 1/4" protruding nail with 7/32" dia. head	Visual Inspection	Pass	No visual detection of puncture

Note: "Test Requirements" as listed in Los Angeles City Test Protocol L021, *Acceptance Criteria for Below-Grade Exterior Damp-Proofing and Waterproofing Materials dated May 2004 And Los Angeles City Shot-Crete Test Protocol dated April 26, 2016.*

For a complete list of details in CAD or PDF, please visit our website at www.avmindustries.com.

AVM Industries, Inc.
8245 Remmet Ave, Canoga Park, CA 91304
888.414.1041 818.888.0050

Quality Waterproofing Products



www.avmindustries.com

Aussie Skin® is a registered trademark of AVM Industries, Inc.



AVM Aussie Clay

Aussie Clay is a heavy-duty Bentonite Composite Sheet Waterproofing Membrane

Sections - 071000/071700/071713/071716

Product Name

AVM AUSSIE CLAY (Internal reference: AVM System 590)

Manufactured by

AVM Industries, Inc.
8245 Remmet Ave, Canoga Park, CA 91304
888.414.1041 818.888.0050
www.avmindustries.com

Product Description

The AVM Aussie Clay is a heavy-duty high strength Bentonite Composite Sheet Waterproofing Membrane consisting of needle punched woven and non-woven geotextile fabrics encapsulating a thick layer (1 lb/sq.ft. / 4.8 kg/M2) of active sodium bentonite between them.

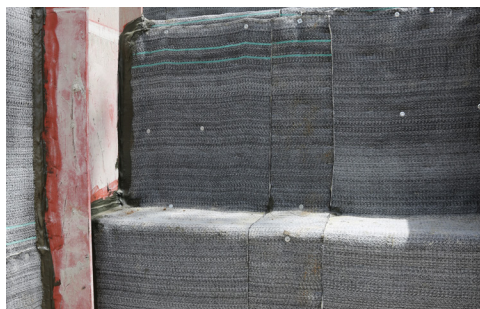
Aussie Clay works by forming a low permeability membrane once it comes in contact with water. Once wetted, the sodium bentonite swells (up to 15 times its size when unconfined) to form a strong continuous membrane. As Aussie Clay swells, it's also designed to self-seal and expand towards the concrete to fill-in small cracks and voids, as well as reduce the potential of lateral water migration. Aussie Clay forms a mechanical bond to the concrete in a pre-applied waterproofing application.

The hydration of Aussie Clay can be restricted if ground water is contaminated with either salt, Chemicals or other foreign substances. (As determined by the site water analysis). If ground water contains strong acids, alkalis, or other contaminants, or is of a conductivity of 2,500 μ mhos/cm or greater, Aussie Clay SW or Aussie Clay SW-PL must be used. Please contact your local rep for details.

Where to Use

Retaining Walls, Basements, Under-Slabs, Mud-Slabs

AVM Aussie Clay is designed for below-grade vertical and horizontal structural foundation surfaces. Aussie Clay may be applied vertically to permanent formwork such as lagging or other property line construction or to existing back-filled structural walls. Aussie Clay may also be applied horizontally either to smoothly prepared concrete substrates and/or compacted earth or crushed stone substrates. Aussie Clay may also be used in conjunction with the AVM Aussie Skin membrane as part of a "Dual Membrane" Assembly.



Application Method

Pre-Applied, loosely laid.

Warranty

AVM Industries will warrant the installed membrane for a period of five (5) years. Extended warranties are available. For complete warranty details, contact AVM Industries or consult with your applicator. Shot-Crete to conform to ACI 506 Standards.

Delivery, Storage, and Handling

- Delivery of all Aussie Clay system components to the job site must be in their original sealed packaging, with manufacturer's name and label intact.
- Handle and store containers in accordance with printed instructions.
- Store in a dry cool space at temperatures between 50°F and 90°F. (Aussie Clay Sealant must be stored at temperatures between 50°F and 75°F) Do not store materials in direct sunlight or where they may be damaged by water or rain.
- Failure to comply with the recommended storage conditions may result in premature deterioration of the product. For specific storage advice, please contact AVM Industries and/or its representatives.
- Keep all materials out of the reach of children.
- If irritation occurs during use, liberally flush affected areas with water. If irritation continues, see a physician immediately.

Project Conditions

- All surfaces to which the Aussie Clay is applied must be dry, sound and stable, with an even finish and free from sharp protruding items, dust, loose debris, grease, curing agents, or anything else that might damage or prevent the proper installation of the membrane.
- Aussie Clay may be applied at temperatures as low as -20°F and as high as 110°F.
- Do NOT install the Aussie Clay if raining or precipitation is imminent.

- Warn personnel against hazards or hazardous conditions on the job that might require special protective gear and or any other special protective or safety procedures.
- Protect adjacent surfaces which could be damaged during the application procedure.
- This system must not be used to cover Expansion Joints.

System Application

Read the Aussie Clay Training Manual/ Installation Instructions Prior to Installation. Application instructions vary based on application surfaces, job conditions and other factors.

Quality Control

- Visually inspect all coated surfaces to ensure a full and proper application, especially at seams, corners, drainage footings, penetrations and other hard-to-reach areas.
- All unsatisfactory areas shall be repaired prior to final acceptance.

Protection of Installed Work

- The membrane shall be protected until backfilled or concrete is properly poured over it.
- Refer to Aussie Clay Training Manual/ Installation Instructions for complete protection requirements.

Availability and Cost

Contact AVM Industries or your approved applicator for pricing and availability.

Technical Services

Technical services are available by contacting our offices at: **888.414.1041** or **818.888.0050** or visit **www.avmindustries.com**

System Specifications

See next page.

PATENT PENDING: Some features of our product or assembly are protected under patent laws by one or more pending US patent(s).

Technical Data

Property	Test Method	Results	Unit
Swell Index	ASTM D5890	≥24	ml/2g
Fluid Loss	ASTM D5891	≤18	ml/2g
Bentonite Mass Per Unit Area	ASTM D5993	1.0 (4.8)	lb/sqft (kg/sqm)
Hydrostatic Resistance	ASTM D5385M	231 (70)	ft (m)
Permeability	ASTM D5084	1 x 10 ⁻¹¹	m/s max
Tensile Strength	ASTM D6768	8.0/8.0	kN/m min
Puncture Resistance	ASTM D6241	337 lbs (1.5)	lbs (kN)
Peel Adhesion to Concrete	ASTM D903M	15 (2.6)	lbs/in (kN/m)
Low Temperature Flexibility	ASTM D1970	Unaffected	-25°F (-32°C)

Item/Component	Packaging	Approximate Shipping Weights	Qty/Pallet	Weight/Pallet	Qty/Truck	VOC
AUSSIE CLAY	3.77'x16.4' Roll (61.9 sq.ft.)	73.4 lbs. (33.3 kg) / Roll	35 Rolls/Pallet	2615 Lbs (1186 kg)	16 Pallets *	N/A

For a complete list of details in CAD or PDF, please visit our website at www.avmindustries.com.

AVM Industries, Inc.
8245 Remmet Ave, Canoga Park, CA 91304
888.414.1041 818.888.0050

Quality Waterproofing Products



www.avmindustries.com



AVM Aussie Clay Granules

Aussie Clay Granules are expandable, specially sized pure sodium bentonite granules for use in conjunction with AVM Aussie Clay waterproofing systems.

Sections - 071000/071700/071713/071716

Product Name

AVM AUSSIE CLAY GRANULES
(Internal reference: AVM System 590)

Manufactured by

AVM Industries, Inc.
8245 Remmet Ave, Canoga Park, CA 91304
888.414.1041 818.888.0050
www.avmindustries.com

Product Description

Aussie Clay Granules are expandable, specially sized pure sodium bentonite granules for use in conjunction with AVM Aussie Clay waterproofing systems. It may be used as a filler in trenches, terminations, behind footings, around penetrations and in other areas where expandable sodium bentonite granules are beneficial.

Aussie Clay Granules work by forming a low permeability membrane once they come in contact with water. Once wetted, the sodium bentonite granules swell (up to several times its size when unconfined) to form a strong continuous barrier for water. As Aussie Clay Granules swell, they are also designed to self-seal small cracks and voids, as well as reduce the potential of lateral water migration.

Where to Use

Retaining Walls, Basements, Under-Slabs, Mud-Slabs

In trenches, behind retaining walls, to fill tie-back covers, etc.

Application Method

Pre-Applied, loosely poured.

Warranty

Warranties are available when sold as part of an Aussie Clay waterproofing system. Consult AVM Industries for details.



Delivery, Storage, and Handling

- Delivery of all Aussie Clay Granules to the job site must be in their original sealed bags, with manufacturer's name and label intact.
- Handle and store containers in accordance with printed instructions.
- Store in a dry cool space at temperatures between 50°F and 90°F. (Aussie Clay Granules must be stored at temperatures between 50°F and 90°F) Do not store materials in direct sunlight or where they may be damaged by water, humidity or rain.
- Failure to comply with the recommended storage conditions may result in premature deterioration or swelling of the product. For specific storage advice, please contact AVM Industries and/or its representatives.
- Keep all materials out of the reach of children.
- If irritation occurs during use, liberally flush affected areas with water. If irritation continues, see a physician immediately.

Project Conditions

- Aussie Clay Granules may be used at temperatures as low as -20°F and as high as 110°F.
- Do NOT install the Aussie Clay granules if raining or precipitation is imminent.
- Warn personnel against hazards or hazardous conditions on the job that might require special protective gear and or any other special protective or safety procedures.
- Protect adjacent surfaces which could be damaged during the application procedure.

Granules Application

Granules come loose in a bag. Pour/spread granules as needed.

Quality Control

Visually inspect all areas where granules were used to ensure a full and proper application. All unsatisfactory areas shall be repaired prior to final acceptance.

Protection of Installed Work

- The Granules shall be protected from rain, wind, debris, etc until backfilled or concrete is properly poured over it.
- Refer to Aussie Clay Training Manual/ Installation Instructions for complete requirements and procedures.

Availability and Cost

Contact AVM Industries or your approved applicator for pricing and availability.

Technical Services

Technical services are available by contacting our offices at: **888.414.1041** or **818.888.0050** or visit **www.avmindustries.com**

System Specifications

See next page.

Technical Data

Typical Characteristics	
Bulk Density (lbs/ft³):	63 ± 3
Cation Exchange Capacity (CEC meq (100gm):	70-90
Color	Light Grey to Tan
Free Swell (cc/2gm):	20 ± 4
Moisture Content (%):	6-10
pH	9.1 ± 0.4
Resistivity (ohm-meters):	2.40
Specific Gravity:	2.55 ± 0.1
Thermal Conductivity	Dry - 0.20
(Btu/hr-ft-OF):	Saturated - 0.50
Wet Screen Analysis (% Residue on #200 Sieve):	3.0 ± 0.5

Typical Chemical Analysis:	%
SiO ₂	60.34
Al ₂ O ₃	19.28
Fe ₂ O ₃	3.48
Na ₂ O	2.34
TiO ₂	.22
CaO	.38
MgO	1.67
K ₂ O	.10
H ₂ O	7.75
Other	.07
L.O.I.	4.37

E.P.A Toxicity Analysis:	E.P.A Standard (ppm)	Typical Analysis (ppm)
Arsenic	5.0	<0.1
Barium	100.0	0.5
Cadmium	1.0	<0.05
Chromium	5.0	<0.1
Lead	5.0	<0.1
Mercury	0.2	<0.02
Selenium	1.0	<0.05
Silver	5.0	<0.1
H ₂ O	7.75	7.75
Other	.07	.07
L.O.I.	4.37	4.37

Typical Sieve Analysis	
Sieve Size	% retained
#8	0.92
#20	75.67
#30	17.40
#100	5.34
Pan	0.67

Item/Component	Packaging	Qty / Pallet	Weight / Pallet	Qty / Truck	Approx Truck-Load Shipping Weights	VOC
AUSSIE CLAY GRANULES	50 Lbs Bag	60 Bags/Pallet	3100 Lbs / 1409 kg	15 Pallets *	46,500 Lbs / 21,140 kg	N/A

* No. of pallets per truck varies if shipped to or in USA or to or in Canada. Qty/Truck listed above shows maximum pallets per 53' flat-bed truck shipped in or to the USA. Call AVM for details.

For a complete list of details in CAD or PDF, please visit our website at www.avmindustries.com.

AVM Industries, Inc.
8245 Remmet Ave, Canoga Park, CA 91304
888.414.1041 818.888.0050

Quality Waterproofing Products



www.avmindustries.com



AVM Aussie Clay PL

Aussie Clay PL is a heavy-duty Bentonite Composite Sheet Waterproofing Membrane with a Poly Liner Backing.

Sections - 071000/071700/071713/071716

Product Name

AVM AUSSIE CLAY PL
(Internal reference: AVM System 590 PL)

Manufactured by

AVM Industries, Inc.
8245 Remmet Ave, Canoga Park, CA 91304
888.414.1041 818.888.0050
www.avmindustries.com

Product Description

The AVM Aussie Clay PL is a heavy-duty high strength Bentonite Composite Sheet Waterproofing Membrane consisting of needle punched woven and non-woven geotextile fabrics encapsulating a thick layer (1 lb/sq.ft. / 4.8 kg/M2) of active sodium bentonite between them. An HDPE liner is fused to the non-woven side of the membrane to increase its overall waterproofing performance and vapor permeance

Aussie Clay PL works by forming a low permeability membrane once it comes in contact with water. Once wetted, the sodium bentonite swells (up to 15 times its size when unconfined) to form a strong continuous membrane. As Aussie Clay PL swells, it's also designed to self-seal and expand towards the concrete to fill-in small cracks and voids, as well as reduce the potential of lateral water migration. Aussie Clay PL forms a mechanical bond to the concrete in a pre-applied waterproofing application.

The hydration of Aussie Clay can be restricted if ground water is contaminated with either salt, Chemicals or other foreign substances. (As determined by the site water analysis). If ground water contains strong acids, alkalis, or other contaminants, or is of a conductivity of 2,500 $\mu\text{mhos/cm}$ or greater, Aussie Clay SW or Aussie Clay SW-PL must be used. Please contact your local rep for details.

Where to Use

Retaining Walls, Basements, Under-Slabs, Mud-Slabs

AVM Aussie Clay PL is designed for below-grade vertical and horizontal structural foundation surfaces. Aussie Clay PL may be applied vertically to permanent formwork such as lagging or other property line construction or to existing back-filled structural walls. Aussie Clay PL may also be applied horizontally either to smoothly prepared concrete substrates and/or compacted earth or crushed stone substrates. Aussie Clay PL may also be used in conjunction with the AVM Aussie Skin membrane as part of a "Dual Membrane" Assembly.



Application Method

Pre-Applied, loosely laid.

Warranty

AVM Industries will warrant the installed membrane for a period of five (5) years. Extended warranties are available. For complete warranty details, contact AVM Industries or consult with your applicator. Shot-Crete to conform to ACI 506 Standards.

Delivery, Storage, and Handling

- Delivery of all Aussie Clay PL system components to the job site must be in their original sealed packaging, with manufacturer's name and label intact.
- Handle and store containers in accordance with printed instructions.
- Store in a dry cool space at temperatures between 50°F and 90°F. (Aussie Clay Sealant must be stored at temperatures between 50°F and 75°F) Do not store materials in direct sunlight or where they may be damaged by water or rain.
- Failure to comply with the recommended storage conditions may result in premature deterioration of the product. For specific storage advice, please contact AVM Industries and/or its representatives.
- Keep all materials out of the reach of children.
- If irritation occurs during use, liberally flush affected areas with water. If irritation continues, see a physician immediately.

Project Conditions

- All surfaces to which the Aussie Clay PL is applied must be dry, sound and stable, with an even finish and free from sharp protruding items, dust, loose debris, grease, curing agents, or anything else that might damage or prevent the proper installation of the membrane.
- Aussie Clay PL may be applied at temperatures as low as -20°F and as high as 110°F.
- Do NOT install the Aussie Clay PL if raining or precipitation is imminent.



- Warn personnel against hazards or hazardous conditions on the job that might require special protective gear and or any other special protective or safety procedures.
- Protect adjacent surfaces which could be damaged during the application procedure.
- This system must not be used to cover Expansion Joints.

System Application

Read the Aussie Clay Training Manual/ Installation Instructions Prior to Installation. Application instructions vary based on application surfaces, job conditions and other factors.

Quality Control

- Visually inspect all coated surfaces to ensure a full and proper application, especially at seams, corners, drainage footings, penetrations and other hard-to-reach areas.
- All unsatisfactory areas shall be repaired prior to final acceptance.

Protection of Installed Work

- The membrane shall be protected until backfilled or concrete is properly poured over it.
- Refer to Aussie Clay Training Manual/ Installation Instructions for complete protection requirements.

Availability and Cost

Contact AVM Industries or your approved applicator for pricing and availability.

Technical Services

Technical services are available by contacting our offices at: **888.414.1041** or **818.888.0050** or visit **www.avmindustries.com**

System Specifications

See next page.

PATENT PENDING: Some features of our product or assembly are protected under patent laws by one or more pending US patent(s).

Technical Data

Property	Test Method	Results	Unit
Swell Index	ASTM D5890	≥24	ml/2g
Fluid Loss	ASTM D5891	≤18	ml/2g
Bentonite Mass Per Unit Area	ASTM D5993	1.0 (4.8)	lb/sqft (kg/sqm)
Hydrostatic Resistance	ASTM D5385M	231 (70)	ft (m)
Permeability	ASTM D5084	1 x 10 ⁻¹¹	m/s max
Tensile Strength	ASTM D6768	8.0/8.0	kN/m min
Puncture Resistance	ASTM D6241	337 lbs (1.5)	lbs (kN)
Peel Adhesion to Concrete	ASTM D903M	15 (2.6)	lbs/in (kN/m)
Low Temperature Flexibility	ASTM D1970	Unaffected	-25°F (-32°C)
Water Vapor Transmission Rate	ASTM E96	0.03	Grains per hr/ft ²

Item/Component	Packaging	Approximate Shipping Weights	Qty/Pallet	Weight/Pallet	Qty/Truck	VOC
AUSSIE CLAY PL	3.77'x16.4' Roll (61.9 sq.ft.)	77.8 lbs. (35.3 kg) / Roll	35 Rolls/Pallet	2765 Lbs (1254 kg)	15 Pallets *	N/A

*No. of pallets per truck varies if shipped to or in USA or to or in Canada and/or if shipped in a shipping container or standard truck. Qty/Truck listed above shows maximum pallets per 40 GP shipping container shipped in or to the USA. Call AVM for details.

For a complete list of details in CAD or PDF, please visit our website at www.avmindustries.com.

AVM Industries, Inc.
8245 Remmet Ave, Canoga Park, CA 91304
888.414.1041 818.888.0050

Quality Waterproofing Products

www.avmindustries.com





AVM Aussie Clay Sealant

Trowel-Grade Sodium Bentonite/
Butyl Rubber Waterproofing Sealant

Sections - 071000/071700/071713/071716

Product Name

Aussie Clay Sealant

Manufactured by

AVM Industries, Inc.
8245 Remmet Ave, Canoga Park, CA 91304
888.414.1041 818.888.0050
www.avmindustries.com

Product Description

Aussie Clay Sealant is a trowel-grade sodium bentonite-butyl rubber sealant designed to be used as a detail accessory in conjunction with other waterproofing products for below-grade waterproofing. Aussie Clay Sealant swells upon contact with water to provide a water-tight seal.

Where to Use

Around penetrations, drains, waterproofing transitions, terminations and other common waterproofing details.

Warranty

Aussie Clay Sealant is sold as part of a waterproofing system. For complete warranty details, refer to that specific waterproofing system's warranty or contact AVM Industries or your applicator for details.

Delivery, Storage, and Handling

- Delivery of the Aussie Clay Sealant to the job site must be in its original sealed container, with manufacturer's name and label intact.
- Handle and store containers in accordance with printed instructions.
- Store indoors at temperatures between 50°F and 90°F. Do not store materials in direct sunlight or where they may be damaged by water or rain.
- Shelf life: 12 months when properly stored.
- Failure to comply with the recommended storage conditions may result in premature deterioration of the product. For specific storage advice, please contact AVM Industries and/or its representatives.
- Keep all materials out of the reach of children.
- If irritation occurs during use, liberally flush affected areas with water. If irritation continues, see a physician immediately.

System Specifications

Item/Component	Packaging	Approximate Shipping Weights	Qty/Pallet	Weight/Pallet	Qty/Truck	VOC
AUSSIE CLAY SEALANT	5.2 Gallons (20 Liters) Bucket	55.1 lbs. (25.7 kg) / Bucket	36 Buckets/Pallet	2083 Lbs (945 kg)	20 Pallets *	N/A

* No. of pallets per truck varies if shipped to or in USA or to or in Canada and/or if shipped in a shipping container or standard truck. Qty/Truck listed above shows maximum pallets per 40 GP shipping container shipped in or to the USA. Call AVM for details.



Project Conditions

- All surfaces to which the Aussie Clay Sealant is applied to must be sound and stable, with an even finish and free from dust, loose debris, grease, curing agents, etc.
- Do not apply materials at temperatures below 25°F and falling or if precipitation is imminent. Do not apply materials in direct sunlight at temperatures above 100°F or rising. In cold weather, condition material to a minimum of 40°F prior to application.
- Warn personnel against hazards of materials to skin and eyes. Note other hazardous conditions on the job that might require special protective gear and or any other special protective or safety procedures.
- Protect adjacent surfaces which could be damaged during the application procedure.
- This sealant must not be used to cover Expansion Joints.

System Application

Spread the sealant as needed using a trowel, brush or by hand (always wear protection gloves). Material is typically applied in 1/4" minimum thickness. Allow to fully cure.

Quality Control

- Visually inspect all coated surfaces to ensure a full and proper coating application, especially at corners, drains and other hard-to-reach areas.
- All unsatisfactory areas shall be repaired prior to final acceptance.

Protection of Installed Work

- The completed section shall be protected for the first 24 hours after application or until the surface is sufficiently cured. (The amount of drying time may vary depending on temperature and humidity conditions)
- Always protect the sealant from possible damage.

Availability and Cost

Contact AVM Industries or your approved applicator for pricing and availability.

Technical Services

Technical services are available by contacting our offices at: **888.414.1041** or **818.888.0050** or visit **www.avmindustries.com**



AVM Aussie Clay SW

A heavy-duty Salt Water Bentonite Composite Sheet Waterproofing Membrane to be used in salt water or other contaminated ground conditions.

Sections - 071000/071700/071713/071716

Product Name

AVM AUSSIE CLAY SW (Internal reference:
AVM System 590 SW)

Manufactured by

AVM Industries, Inc.
8245 Remmet Ave, Canoga Park, CA 91304
888.414.1041 818.888.0050
www.avmindustries.com

Product Description

The AVM Aussie Clay SW is a heavy-duty high strength Salt Water Grade Bentonite Composite Sheet Waterproofing Membrane consisting of needle punched woven and non-woven geotextile fabrics encapsulating a thick layer (1 lb/sq.ft. / 4.8 kg/M2) of a specially formulated sodium bentonite blend to be used in saltwater and other ground contaminated (Chemicals, Acids, Hydrocarbons) sites

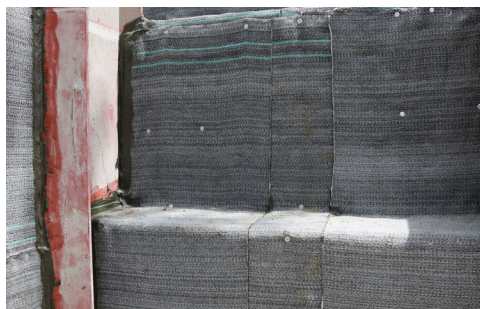
Aussie Clay SW works by forming a low permeability membrane once it comes in contact with water. Once wetted, the sodium bentonite swells (up to 15 times its size when unconfined) to form a strong continuous membrane. As Aussie Clay SW swells, it's also designed to self-seal and expand towards the concrete to fill in small cracks and voids, as well as prevent the potential of lateral water migration. Aussie Clay SW forms a mechanical bond to the concrete in a pre-applied waterproofing application.

Aussie Clay SW and Aussie Clay SW-PL are used where ground water is contaminated with either salt, chemicals or other foreign substances, as determined by a site water analysis, which can keep Aussie Clay or Aussie Clay PL from hydrating. Please contact your local rep for details.

Where to Use

Retaining Walls, Basements, Under-Slabs, Mud-Slabs

AVM Aussie Clay SW is designed for below-grade vertical and horizontal structural foundation surfaces. Aussie Clay SW may be applied vertically to permanent formwork such as lagging or other property line construction or to existing back-filled structural walls. Aussie Clay SW may also be applied horizontally either to smoothly prepared concrete substrates and/or compacted earth or crushed stone substrates. Aussie Clay SW may also be used in conjunction with the AVM Aussie Skin membrane as part of a "Dual Membrane" Assembly.



Application Method

Pre-Applied, loosely laid.

Warranty

AVM Industries will warrant the installed membrane for a period of five (5) years. Extended warranties are available. For complete warranty details, contact AVM Industries or consult with your applicator. Shot-Crete to conform to ACI 506 Standards.

Delivery, Storage, and Handling

- Delivery of all Aussie Clay SW system components to the job site must be in their original sealed packaging, with manufacturer's name and label intact.
- Handle and store containers in accordance with printed instructions.
- Store in a dry cool space at temperatures between 50°F and 90°F. (Aussie Clay Sealant must be stored at temperatures between 50°F and 75°F) Do not store materials in direct sunlight or where they may be damaged by water or rain.
- Failure to comply with the recommended storage conditions may result in premature deterioration of the product. For specific storage advice, please contact AVM Industries and/or its representatives.
- Keep all materials out of the reach of children.
- If irritation occurs during use, liberally flush affected areas with water. If irritation continues, see a physician immediately.

Project Conditions

- All surfaces to which the Aussie Clay SW is applied must be dry, sound and stable, with an even finish and free from sharp protruding items, dust, loose debris, grease, curing agents, or anything else that might damage or prevent the proper installation of the membrane.
- Aussie Clay SW may be applied at temperatures as low as -20°F and as high as 110°F.
- Do NOT install the Aussie Clay SW if raining or precipitation is imminent.

- Warn personnel against hazards or hazardous conditions on the job that might require special protective gear and or any other special protective or safety procedures.
- Protect adjacent surfaces which could be damaged during the application procedure.
- This system must not be used to cover Expansion Joints.

System Application

Read the Aussie Clay Training Manual/ Installation Instructions Prior to Installation. Application instructions vary based on application surfaces, job conditions and other factors.

Quality Control

- Visually inspect all coated surfaces to ensure a full and proper application, especially at seams, corners, drainage footings, penetrations and other hard-to-reach areas.
- All unsatisfactory areas shall be repaired prior to final acceptance.

Protection of Installed Work

- The membrane shall be protected until backfilled or concrete is properly poured over it.
- Refer to Aussie Clay Training Manual/ Installation Instructions for complete protection requirements.

Availability and Cost

Contact AVM Industries or your approved applicator for pricing and availability.

Technical Services

Technical services are available by contacting our offices at: **888.414.1041** or **818.888.0050** or visit **www.avmindustries.com**

System Specifications

See next page.

PATENT PENDING: Some features of our product or assembly are protected under patent laws by one or more pending US patent(s).

Technical Data

Property	Test Method	Results	Unit
Swell Index	ASTM D5890	≥24	ml/2g
Fluid Loss	ASTM D5891	≤18	ml/2g
Bentonite Mass Per Unit Area	ASTM D5993	1.0 (4.8)	lb/sqft (kg/sqm)
Hydrostatic Resistance	ASTM D5385M	231 (70)	ft (m)
Permeability	ASTM D5084	1 x 10 ⁻¹¹	m/s max
Tensile Strength	ASTM D6768	8.0/8.0	kN/m min
Puncture Resistance	ASTM D6241	337 lbs (1.5)	lbs (kN)
Peel Adhesion to Concrete	ASTM D903M	15 (2.6)	lbs/in (kN/m)
Low Temperature Flexibility	ASTM D1970	Unaffected	-25°F (-32°C)

Item/Component	Packaging	Approximate Shipping Weights	Qty/Pallet	Weight/Pallet	Qty/Truck	VOC
AUSSIE CLAY SW	3.77'x16.4' Roll (61.9 sq.ft.)	73.4 Lbs. (33.3 kg) / Roll	35 Rolls/Pallet	2615 Lbs (1186 kg)	16 Pallets *	N/A

* No. of pallets per truck varies if shipped to or in USA or to or in Canada and/or if shipped in a shipping container or standard truck. Qty/Truck listed above shows maximum pallets per 40 GP shipping container shipped in or to the USA. Call AVM for details.

For a complete list of details in CAD or PDF, please visit our website at www.avmindustries.com.

AVM Industries, Inc.
8245 Remmet Ave, Canoga Park, CA 91304
888.414.1041 818.888.0050

Quality Waterproofing Products



www.avmindustries.com



AVM Aussie Clay SW-PL

A heavy-duty Salt Water Bentonite Composite Sheet Waterproofing Membrane with a poly liner backing to be used in salt water or other contaminated ground conditions.

Sections - 071000/071700/071713/071716

Product Name

AVM AUSSIE CLAY SW-PL (Internal reference: AVM System 590 SW-PL)

Manufactured by

AVM Industries, Inc.
8245 Remmet Ave, Canoga Park, CA 91304
888.414.1041 818.888.0050
www.avmindustries.com

Product Description

The AVM Aussie Clay SW-PL is a heavy-duty high strength Salt Water Grade Bentonite Composite Sheet Waterproofing Membrane consisting of needle punched woven and non-woven geotextile fabrics encapsulating a thick layer (1 lb/sq.ft. / 4.8 kg/M2) of a specially formulated sodium bentonite blend to be used in saltwater and other ground contaminated (Chemicals, Acids, Hydrocarbons) sites. An HDPE liner is fused to the non-woven side of the membrane to increase its overall waterproofing performance and vapor permeance

Aussie Clay SW-PL works by forming a low permeability membrane once it comes in contact with water. Once wetted, the sodium bentonite swells (up to 15 times its size when unconfined) to form a strong continuous membrane. As Aussie Clay SW-PL swells, it's also designed to self-seal and expand towards the concrete to fill in small cracks and voids, as well as prevent the potential of lateral water migration. Aussie Clay SW-PL forms a mechanical bond to the concrete in a pre-applied waterproofing application.

Aussie Clay SW and Aussie Clay SW-PL are used where ground water is contaminated with either salt, chemicals or other foreign substances, as determined by a site water analysis, which can keep Aussie Clay or Aussie Clay PL from hydrating. Please contact your local rep for details.

Where to Use

Retaining Walls, Basements, Under-Slabs, Mud-Slabs

AVM Aussie Clay SW-PL is designed for below-grade vertical and horizontal structural foundation surfaces. Aussie Clay SW-PL may be applied vertically to permanent formwork such as lagging or other property line construction or to existing back-filled structural walls. Aussie Clay SW-PL may also be applied horizontally either to smoothly prepared concrete substrates and/or compacted earth or crushed stone substrates. Aussie Clay SW-PL may also be used in conjunction with the AVM Aussie Skin membrane as part of a "Dual Membrane" Assembly.



Application Method

Pre-Applied, loosely laid.

Warranty

AVM Industries will warrant the installed membrane for a period of five (5) years. Extended warranties are available. For complete warranty details, contact AVM Industries or consult with your applicator. Shot-Crete to conform to ACI 506 Standards.

Delivery, Storage, and Handling

- Delivery of all Aussie Clay SW-PL system components to the job site must be in their original sealed packaging, with manufacturer's name and label intact.
- Handle and store containers in accordance with printed instructions.
- Store in a dry cool space at temperatures between 50°F and 90°F. (Aussie Clay Sealant must be stored at temperatures between 50°F and 75°F) Do not store materials in direct sunlight or where they may be damaged by water or rain.
- Failure to comply with the recommended storage conditions may result in premature deterioration of the product. For specific storage advice, please contact AVM Industries and/or its representatives.
- Keep all materials out of the reach of children.
- If irritation occurs during use, liberally flush affected areas with water. If irritation continues, see a physician immediately.

Project Conditions

- All surfaces to which the Aussie Clay SW-PL is applied must be dry, sound and stable, with an even finish and free from sharp protruding items, dust, loose debris, grease, curing agents, or anything else that might damage or prevent the proper installation of the membrane.
- Aussie Clay SW-PL may be applied at temperatures as low as -20°F and as high as 110°F.
- Do NOT install the Aussie Clay SW-PL if raining or precipitation is imminent.

- Warn personnel against hazards or hazardous conditions on the job that might require special protective gear and or any other special protective or safety procedures.
- Protect adjacent surfaces which could be damaged during the application procedure.
- This system must not be used to cover Expansion Joints.

System Application

Read the Aussie Clay Training Manual/ Installation Instructions Prior to Installation. Application instructions vary based on application surfaces, job conditions and other factors.

Quality Control

- Visually inspect all coated surfaces to ensure a full and proper application, especially at seams, corners, drainage footings, penetrations and other hard-to-reach areas.
- All unsatisfactory areas shall be repaired prior to final acceptance.

Protection of Installed Work

- The membrane shall be protected until backfilled or concrete is properly poured over it.
- Refer to Aussie Clay Training Manual/ Installation Instructions for complete protection requirements.

Availability and Cost

Contact AVM Industries or your approved applicator for pricing and availability.

Technical Services

Technical services are available by contacting our offices at: **888.414.1041** or **818.888.0050** or visit **www.avmindustries.com**

System Specifications

See next page.

PATENT PENDING: Some features of our product or assembly are protected under patent laws by one or more pending US patent(s).

Technical Data

Property	Test Method	Results	Unit
Swell Index	ASTM D5890	≥24	ml/2g
Fluid Loss	ASTM D5891	≤18	ml/2g
Bentonite Mass Per Unit Area	ASTM D5993	1.0 (4.8)	lb/sqft (kg/sqm)
Hydrostatic Resistance	ASTM D5385M	231 (70)	ft (m)
Permeability	ASTM D5084	1 x 10 ⁻¹¹	m/s max
Tensile Strength	ASTM D6768	8.0/8.0	kN/m min
Puncture Resistance	ASTM D6241	337 lbs (1.5)	lbs (kN)
Peel Adhesion to Concrete	ASTM D903M	15 (2.6)	lbs/in (kN/m)
Low Temperature Flexibility	ASTM D1970	Unaffected	-25°F (-32°C)
Water Vapor Transmission Rate	ASTM E96	0.03	Grains per hr/ft ²

Item/Component	Packaging	Approximate Shipping Weights	Qty/Pallet	Weight/Pallet	Qty/Truck	VOC
AUSSIE CLAY SW-PL	3.77'x16.4' Roll (61.9 sq.ft.)	78.3 lbs. (35.5 kg) / Roll	35 Rolls/Pallet	2787 Lbs (1264 kg)	15 Pallets *	N/A

*No. of pallets per truck varies if shipped to or in USA or to or in Canada and/or if shipped in a shipping container or standard truck. Qty/Truck listed above shows maximum pallets per 40 GP shipping container shipped in or to the USA. Call AVM for details.

For a complete list of details in CAD or PDF, please visit our website at www.avmindustries.com.

AVM Industries, Inc.
8245 Remmet Ave, Canoga Park, CA 91304
888.414.1041 818.888.0050

Quality Waterproofing Products

www.avmindustries.com





AVM Aussie Swell® Red (The Red Waterstop) Expandable Waterstop

AVM System 940, Aussie Swell® Red, Expandable Bentonite Waterstop

Sections Section 031100 / 031500 / 031513.16
Expandable Waterstop

Product Name

AVM Aussie Swell® Red

Manufactured by

AVM Industries, Inc.
8245 Remmet Ave, Canoga Park, CA 91304
888.414.1041 818.888.0050
www.avmindustries.com

Product Description

Aussie Swell Red is a hydrophilic strip waterstop and that is a formulated blend of sodium bentonite & butyl rubber. Aussie Swell Red is an active waterstop which reacts with water to seal construction joints within concrete. The seal resists hydrostatic pressure, stopping the passage of water through the joint. Due to the sodium bentonite content, on contact with water, Aussie Swell Red will swell (expand) within its confinement, self-injecting into localized voids & minor fissures. Aussie Swell Red is an active waterstop designed to replace passive PVC/Rubber waterbars, without the need for pre-formed intersections, split forming or seam welding.

Where to Use

Aussie Swell Red can be applied to concrete, steel or pipe (PVC). Coil ends are butt jointed (not overlapped) to form a continuous waterstop. Use in concrete joints, pipe penetrations, wall-to-floor joints, irregular surfaces, etc.

Advantages

- Non-dimensional swell allows complete injection to surrounding voids.
- Conformable – can be applied to a range of irregular substrates.
- Resists in excess of 6 bar (60m) hydrostatic pressure.
- Swells many times more than its dry volume to form impenetrable gel.
- Simple butt jointing on site application.
- Reproducible swell after wet-dry cycle.
- Unaffected by freeze/thaw cycling.



Limitations

- Aussie Swell Red is not designed to function in movement/expansion joints.
- Aussie Swell Red is designed for minimum 2000 PSI reinforced concrete. Furthermore, it requires confinement and it must be covered by minimum 3" concrete on all sides.
- Aussie Swell Red should not be subjected to submersion or remain in contact with water prior to concrete pour. If the product exhibits any considerable swell prior to concrete pour it must be replaced.
- In conditions where sever ground water or chemical contamination exists or is expected consult manufacture for approval

Warranty

AVM's Standard 5-year material warranty applies. Contact AVM for warranty information.

Delivery, Storage, and Handling

- a. Delivery of all the Aussie Swell Red® components to the job site must be in their original sealed packaging, with manufacturer's name and label intact.
- b. Store indoors in a cool DRY place (away from heat or moisture) at temperatures between 50°F and 90°F. Do not store materials in direct sunlight or where they may be damaged by water or rain.
- c. Keep all materials out of the reach of children.

Project Conditions

- a. Do not apply materials at temperatures below 20°F, or above 110°F if applying in direct sun light.

System Application

Use AVM's Aussie Seal M as the adhesive to install the Aussie Swell Red waterstop. Refer to the Aussie Swell Red Installation instructions, for detailed Installation procedures.

Quality Control

Visually inspect the installed Aussie Swell Red product to ensure it is properly adhered to substrate and that it has not been subjected to premature hydration. Consult with manufacturer if you have any questions.

Protection of Installed Work

The completed Aussie Swell Red system shall be protected until concrete is poured over it. Maximum exposure to UV is 30 days.

Availability and Cost

Contact an AVM authorized distributor for availability and pricing.

Technical Services

Technical services are available by contacting our offices at: **888.414.1041** or **818.888.0050** or visit **www.avmindustries.com**

System Specifications

See next page.

The following coverages are based on controlled tests. Actual coverages may vary.

Item/Component	Item Size	Qty / Box	Qty per Pallet	Weights			VOC
				Each	Box	Pallet	
Aussie Swell Red Coil	16.4 LF (5M)	6 Coils	216 Coils (36 Boxes)	8.58 lb	53.7 lbs	1937 lbs	N/A
Aussie Seal M Cartridge	10.1 oz (300 ml)	12 Cartridges	105 Boxes / 1260 Cartridges	1.0 lb	12.2 lbs	1281 lbs	15 g/l
Aussie Seal M Sausage	20 oz (600 ml)	12 Sausages	45 Boxes / 540 Sausages	2.0 lb	24.4 lbs	1098 lbs	15 g/l

For a complete list of details in CAD or PDF, please visit our website at www.avmindustries.com.

AVM Industries, Inc.
8245 Remmet Ave, Canoga Park, CA 91304
888.414.1041 818.888.0050

Quality Waterproofing Products

www.avmindustries.com





AVM Aussie Tube®

AVM System 950, Aussie Tube® Injection Grouting System

Section 036400
Injection Grouting

Product Name

AVM Aussie Tube®

Manufactured by

AVM Industries, Inc.
8245 Remmet Ave, Canoga Park, CA 91304
888.414.1041 818.888.0050
www.avmindustries.com

Product Description

The AVM Aussie Tube is an Injection Tubing System designed for injecting grout into concrete walls, cold-joints and other critical areas.

Where to Use

The Aussie Tube is typically installed at cold joints, walls with blind-side waterproofing systems, concrete joints, etc. The Aussie Tube is installed during the rebar installation phase and will remain embedded in the concrete in critical areas where grout will be injected into at a later date.

Warranty

All information is given in good faith and without any warranty. The application, use and processing of these products are beyond our control and therefore entirely your responsibility. Established liability if any, through bad application or any other reason, for any damages, is always limited to the value of the Aussie Tube goods supplied to that project.

Delivery, Storage, and Handling

- Delivery of all the Aussie Tube® components to the job site must be in their original sealed packaging, with manufacturer's name and label intact.
- Store in a cool dark place at temperatures between 50°F and 90°F. Do not store materials in direct sunlight or where they may be damaged by water or rain.
- Keep all materials out of the reach of children.

Project Conditions

Do not apply materials at temperatures below 20°F, or above 110°F if applying in direct sunlight.

System Application

Install the Aussie Tube Injection System in accordance with AVM's Installation Instructions.

Preparation of Substrates

Concrete surfaces must be structurally sound, clean, dry, free of contamination, without sharp edges that could cut or damage the tubing system.

Aussie Tube Components: (100 ft kit)

- Aussie Tube (Injection Tube) – Black spongy tube (100 foot roll)
- Aussie Tube Feeder Hose – Clear plastic Feeder Hose
- Aussie Tube Elbow – Quick Connect elbow connector
- Hose Clamps – Clamps to secure both tubes.
- Aussie Tube Plugs (Optional) – End caps to close Aussie Feeder Tube.

Installation (See diagrams below)

- Cut the Aussie Tube to the desired length. Max length per run is 30 feet!
- Cut two pieces of Feeder Hose (approx. 12" – 18" each)
- Lay out the Aussie Tube in the desired location.
- Connect the Aussie Tube to the Quick Connect Elbow by forcing it into the elbow all the way in.
- Connect the Feeder Tube to the Quick Connect Elbow by forcing it into the elbow all the way in.
- Secure the entire assembly to the footing with the clamps every 2 feet as shown on the diagram.
- Plug the Feeder Tube ends with the Plugs or seal the edges with Duct Tape.
- Install the next Aussie Tube run with a minimum 6" overlap. (As shown in the diagram)

Quality Control

- Visually inspect all the Aussie Tube Injection System components to ensure proper and secure installation.
- All unsatisfactory areas shall be repaired prior to final acceptance.

Protection of Installed Work

The completed Aussie Tube system shall be protected until concrete is poured over it. Maximum exposure to UV is 30 days.

Availability and Cost

Contact AVM Industries or your approved applicator for pricing and availability.

Technical Services

Technical services are available by contacting our offices at: **888.414.1041** or **818.888.0050** or visit **www.avmindustries.com**

System Specifications

See next page.

The following coverages are based on controlled tests. Actual coverages may vary.

Aussie Tube (Injection Tube) 100% polyethylene (imperishable) and equipped with a special water-repellent coating

Diameter	internal: 1/4 inch / external: 1/2 inch
Wall thickness	1/8 inch
Length	Max. 30 feet per run / Sold in 100' kits and bulk
Weight	6 lbs. per kit
Temperature range	max 170 °F
Compression resistance	60 Foot of Concrete
Flow rate	Approx. 7 Gal/HR/FT (depending on the viscosity of the resin)
Color	Black

The Aussie Tube is made from expanded PE foam with porous structure with cells that form a zigzag passage. The cells open under pressure of the injected resin. The special water-repellent coating prevents the penetration of concrete milk into the tube's pores. The injection hose allows an optimal and uniform spread of the resin, which will be pre-injected upon concrete cure or injected in a later stage in case of leakages.

Aussie Tube is ideal for the injection of the following resins:

- Polyurethane Chemical Grouts
- Acrylate Injection Resins
- For other injection resins, consult our technical service specialist

Aussie Tube Feeder Hose

Material	crystal-clear, transparent PVC hose with woven polyester fibres
Length	depending on the thickness of the concrete wall
Concrete height	max. 50 feet
Temperature range	Up to 60°C / 140°F

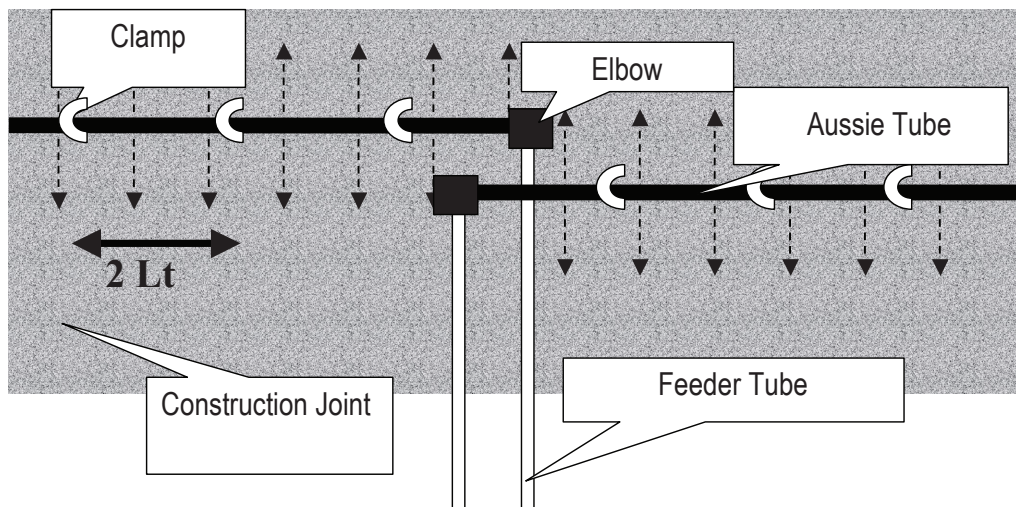
The Feeder Hose forms the end of the Aussie Tube system, which extends out of the form work. At the end of this hose an injection nipple can be connected later on for the injection process.

Aussie Tube (Quick Connect) Elbow

This snap on connection forms the union piece between the Aussie Tube (injection tube) and the Feeder Hose. The Aussie Tube and the Feeder Hose are fastened by a simple push and pull movement in the 90° Elbow.

Step 1: Push Tube/Hose into Elbow

Step 2: Pull Tube/Hose Gently to secure



For a complete list of details in CAD or PDF, please visit our website at www.avmindustries.com.

AVM Industries, Inc.
8245 Remmet Ave, Canoga Park, CA 91304
888.414.1041 818.888.0050

Quality Waterproofing Products



www.avmindustries.com

AVM Bottom Drain Foundation Wall Drainage System

Sections 334100, 334113, 334143, 334133
Prefabricated Drainage System

Product Name

AVM Bottom Drain

Manufactured by

AVM Industries, Inc.
8245 Remmet Ave, Canoga Park, CA 91304
888.414.1041 818.888.0050
www.avmindustries.com

Product Description

The first truly modular drainage and water collection system for:

- Basements
- Foundations Walls
- Retaining Walls

AVM Bottom Drain

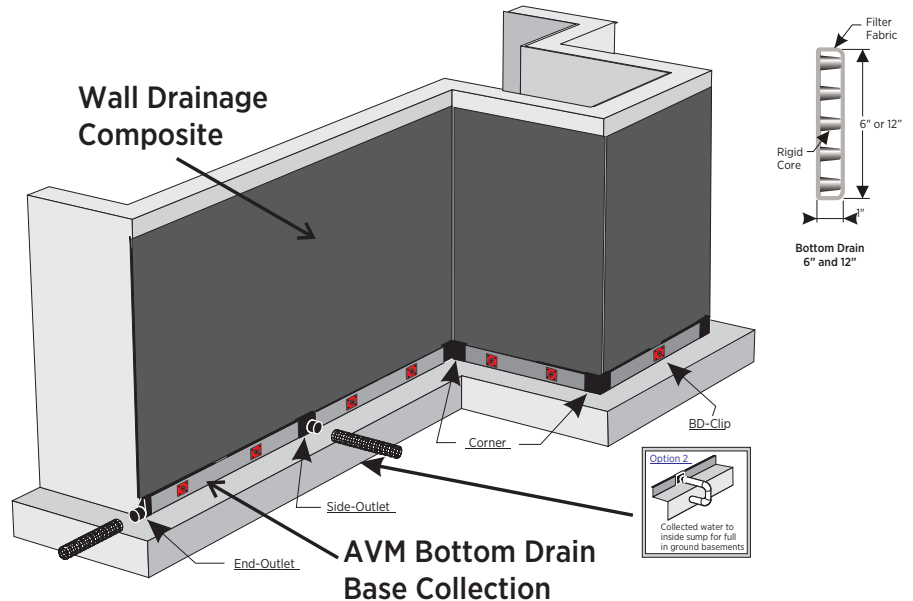
AVM Bottom Drain is a modular composite drainage and collection system consisting of a 3-dimensional, high-flow, drainage core which is wrapped with a non-woven filter fabric. It is designed to replace a conventional sand or gravel covered pipe drain around building foundations and retaining walls. Soil particles are held back by the filter fabric allowing water to pass through to the drain core for easy removal by sump or by running to daylight. Available in 6 inch and 12 inch widths. A full array of fittings are available in the system to allow for a fast and easy installation. BD-Clips are used to hold the Bottom Drain vertically against the foundation wall for a secure hold and BD-Tape is used to attach all Bottom Drain fittings.

Where to Use

- Eliminates pipe & gravel
- Saves time and labor
- Lightweight and
- Easy to install
- Cost effective
- Code approvals

Installation Instructions:

1. Apply waterproofing system to wall.
2. Determine location of fittings for base part. Cut Bottom Drain to proper length between fittings. (Allow for extra length for insertion into fittings) Insert Bottom Drain completely into fittings. Tape fittings with BD-Tape.
3. Bond fittings and Bottom Drain to base of wall with either Aussie Seal M, waterproofing mastic, panel adhesive, insulation board adhesive, or BD-Clips.
4. Connect base fittings to 4" corrugated plastic drain pipe and run to sump or daylight. Special care should be taken to properly compact soil under drain pipe to prevent settling of drain pipe.
5. Backfill and compact soil.



Project Conditions

1. All surfaces to which the Drainage Boards are applied to must be clean, sound and stable enough to properly attach and hold onto the drain boards being installed.
2. Warn personnel against hazards of working with this product. Sharp edges, weight, etc. Note other hazardous conditions on the job that might require special attention or extra protective gear and or any other special protective or safety procedures.
3. Protect adjacent surfaces which could be damaged during the application procedure.

Inspection of Substrates

1. Verify 1% slope to underslab collection pipes or site water drainage system at underslab drainage system location substrate.
2. Examine conditions and substrates where products specified in this section are installed; submit written notification of unacceptable conditions or substrates.

System Application

Refer to installation instructions.

Quality Control

- a. Visually inspect all Bottom Drain components to ensure a full and proper system installation.
- b. All unsatisfactory areas shall be repaired prior to final acceptance.

Delivery, Storage, and Handling

- a. Packing and shipping: Provide materials in original unopened containers with manufacturer's labels intact and legible.
- b. Acceptance at site:
 1. Unload materials: check for damage.
 2. Damaged materials determined by visual inspection will not be accepted.
 3. Remove rejected materials from site immediately.
- c. Storage and protection:
 1. Store materials in dry area in manufacturer's protective packaging with labels and installation instructions intact.
 2. Store materials under cover, off ground; protect from sunlight.

Protection of Installed Work

Always protect the waterproofing and drainage system until fully covered with dirt, concrete, shot-crete, etc.

Availability and Cost

Contact AVM Industries or your approved applicator for pricing and availability.

Technical Services

Technical services are available by contacting our offices at: **888.414.1041** or **818.888.0050** or visit **www.avmindustries.com**

System Specifications

See next page.

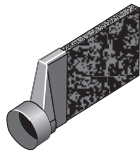
Physical Properties

Core	
Compressive Strength (ASTM D-1621)	9,500 psf (455 kNm ²)
Thickness (ASTM D-1777)	1" (2.54 mm)
Flow (Hydraulic gradient = 1) (ASTM D-4716)	30 g/min/ft (372 L/min/m)

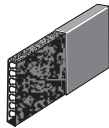
Fabric	
Flow (ASTM D-4491)	140 gal/min/ft ² (5704 L/min/m ²)
Puncture (ASTM D-6241)	250 lbs. (1.11 kN)
AOS (ASTM D-4751)	70 U.S. Sieve (.212 mm)
Grab Tensile (ASTM D-4632)	100 lbs. (.45 kN)

General Characteristics		
Roll Length	Roll Width	Roll Weight (approx. lbs.)
165 ft. (50.29 m)	6" (15 cm)	35.0 (16.7 kg)
165 ft. (50.29 m)	12" (30 cm)	65.0 (29.2 kg)

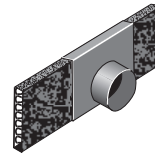
6" & 12" End Outlet



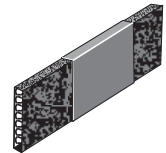
6" Only Endcap



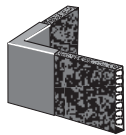
6" & 12" Side Outlet



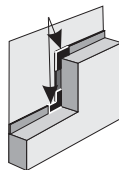
6" & 12" Splice



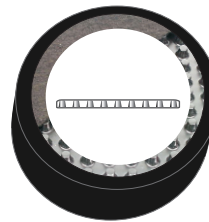
6" & 12" Corner



6" Only Step Down



Bd-Tape



Bd-Clips



Unrolling Bottom Drain



Corner Fitting



End Outlet Fitting



Step Down Fitting



Notes:

The information contained herein is believed by AVM Industries, Inc. to be accurate and is offered solely for the customer's consideration, investigation and verification. Determination of suitability for use is the responsibility of the user. AVM's Limited Warranty apply. See www.avmindustries.com for more info. Limitations: Bottom Drain is resistant to chemicals in normal soil environments. However, some reagents may affect the performance of the Bottom Drain. An AVM representative should be contacted for further information to determine the suitability of use of Bottom Drain in unusual soil environments. Bottom Drain should be limited to its exposure to ultra-violet sunlight. Bottom Drain should be backfilled or covered within seven days of installation. Disclaimer: All information, drawings and specifications are based on the latest published information at the time of printing. AVM reserves the right to make changes due to manufacturing improvements and engineering at any time. All physical properties are minimum average roll values (MARV). Standard variations of 10% in mechanical properties and 15% in hydraulic properties are normal.

For a complete list of details in CAD or PDF, please visit our website at www.avmindustries.com.

AVM Industries, Inc.
8245 Remmet Ave, Canoga Park, CA 91304
888.414.1041 818.888.0050

Quality Waterproofing Products



www.avmindustries.com



AVM Drain Board 6000/6020

Prefabricated Drainage Composites

Sections 334600 / 334613 / 334616 /
334619 / 334633

Prefabricated Drainage Composites

Product Name

AVM Drain Board 6000/6020

Manufactured by

AVM Industries, Inc.
8245 Remmet Ave, Canoga Park, CA 91304
888.414.1041 818.888.0050
www.avmindustries.com

Product Description

Provides protection for waterproofing systems and managing subsurface water around building foundations. Soil backfill is retained while allowing water to pass into the drainage system providing hydrostatic relief. Collected water is then conveyed to AVM Bottom Drain 6" or AVM Bottom Drain 12", or other collection systems.

Consists of an impermeable polymeric sheet cusped under heat and pressure to form a high flow dimpled drainage core. The core is then bonded to a layer of nonwoven filter fabric. The filter fabric retains soil or sand particles as well as freshly placed concrete or grout, allowing filtered water to pass into the drainage core.

Where to Use

AVM Drain Board 6000/6200 is ideal for use with foundation walls, retaining walls, planters, roof gardens, bridge abutments, and under slabs.

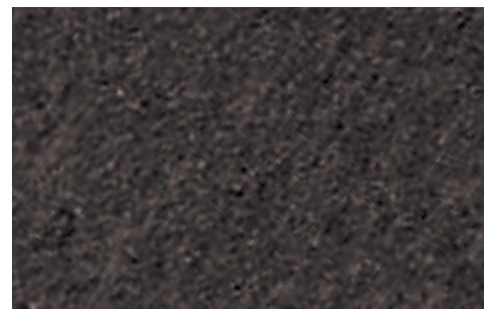
AVM Drain Board 6000 / 6020

Maintains a very high flow rate while providing a higher compressive strength for greater depths. A very popular choice for vertical and horizontal single sided drainage applications. Moderate duty.

AVM Drain Board 6000XL / 6020XL*

Designed for extra heavy duty vertical and horizontal applications that demand greater compressive strength and improved filtration for challenging soil conditions. Heavier duty drain core & fabric.

* 6020 and 6020XL are identical to 6000 and 600XL with the addition of a membrane protective film on the back side.



Delivery, Storage, and Handling

- Packing and shipping: Provide materials in original unopened containers with manufacturer's labels intact and legible.
- Acceptance at site:
 - Unload materials: check for damage.
 - Damaged materials determined by visual inspection will not be accepted.
 - Remove rejected materials from site immediately.
- Storage and protection:
 - Store materials in dry area in manufacturer's protective packaging with labels and installation instructions intact.
 - Store materials under cover, off ground; protect from sunlight.
 - Transmissivity or Flow Q with hydraulic gradient of 1 with confining stress indicated in MANUFACTURED UNITS Article in accord with ASTM D4716-01

Project Conditions

- All surfaces to which the Drainage Boards are applied to must be clean, sound and stable enough to properly attach and hold onto the drain boards being installed.
- Warn personnel against hazards of working with this product. Sharp edges, weight, etc. Note other hazardous conditions on the job that might require special attention or extra protective gear and or any other special protective or safety procedures.
- Protect adjacent surfaces which could be damaged during the application procedure.

Inspection of Substrates

- Verify 1% slope to underslab collection pipes or site water drainage system at underslab drainage system location substrate.
- Examine conditions and substrates where products specified in this section are installed; submit written notification of unacceptable conditions or substrates.

System Application

Refer to installation instructions.

Quality Control

- Visually inspect all drain board surfaces to ensure a full and proper drain board system application, especially at corners, drainage footings and other hard-to-reach areas.
- All unsatisfactory areas shall be repaired prior to final acceptance.

Protection of Installed Work

Always protect the waterproofing and drainage system until fully covered with dirt, concrete, shot-crete, etc.

Availability and Cost

Contact AVM Industries or your approved applicator for pricing and availability.

Technical Services

Technical services are available by contacting our offices at: **888.414.1041** or **818.888.0050** or visit **www.avmindustries.com**

System Specifications

See next page.

Physical Properties

Core	6000/6020	6000XL/6020XL	Fabric	6000/6020	6000XL/6020XL
Compressive Strength (ASTM D-1621)	15,000 psf (719 kNm²)	16,500 psf (790 kNm²)	Flow (ASTM D-4491)	140 gal/min/ft²² (5704 L/min/m²)	110 gal/min/ft²² (4482 L/min/m²)
Thickness (ASTM D-1777)	.40" (10.16 mm)	.40" (10.16 mm)	Puncture (ASTM D-4833)	65 lbs. (.30 kN)	95 lbs. (.42 kN)
Flow (Hydraulic gradient = 1) (ASTM D-4716)	21 g/min/ft (260 L/min/m)	21 g/min/ft (260 L/min/m)	AOS (EOS)	70 U.S. Sieve (.212 mm)	70 U.S. Sieve (.212 mm)
			Grab Tensile (ASTM D-4632)	100 lbs. (.45 kN)	160 lbs. (.71 kN)

General Characteristics					
Roll Length	Roll Width	Roll Weight (approx. lbs.)			
		6000	6020	6000XL	6020XL
50 ft. (15.24 m)	4.0 ft. (1.22 m)	39.0	40.5	45.0	46.5
50 ft. (15.24 m)	6.5 ft. (1.98 m)	63.0	65.5	73.0	75.5
50 ft. (15.24 m)	8.0 ft. (2.43 m)	82.0	85.0	95.0	98.0

Notes:
AVM Drain Board 6000 in 4’ and 6.5’ widths are stocked items.
All other drain board versions are “Special Order” items. Allow 2 weeks lead time for special order items.
For pricing and availability of special order items, please contact AVM Industries or your local distributor.

For a complete list of details in CAD or PDF, please visit our website at www.avmindustries.com.

