



## Refresh 4150 System

### Deck Coating / Multi Purpose Sealer

Sections 071800 / 071813  
Fluid Applied Waterproofing

#### Product Name

Top Coat Sealer 4150

#### Manufactured by

AVM Industries, Inc.  
8245 Remmet Ave, Canoga Park, CA 91304  
888.414.1041 818.888.0050  
www.avmindustries.com

#### System Description

AVM's Refresh 4150 System provides a fast, economical, easy to install and environmentally friendly solution to re-coating existing deck coatings.

#### Product Description

Two component system that combines the excellent adhesion of AVM's high solids Epoxy Primer 401 and the heavy-duty, high-performance attributes of AVM's Water-Based Acrylic Topcoat Sealer 4150.

- Epoxy primer 401 will bond to most properly prepared surfaces including Acrylic and Polyurethane deck coatings, concrete, wood, metal, glass, and reinforced plastics.
- Topcoat Sealer 4150 Reseals the deck with a clear or colored water-based acrylic sealer to preserve the deck, help prevent future deterioration and improve the aesthetics where a recoat is desired.

#### Where to Use

AVM Refresh 4150 System was formulated to be used on AVM acrylic deck coating systems such as Elasto Fiberdeck and Forevercoat but may be used on concrete, masonry, metal, wood, Acrylic or Polyurethane deck coatings or existing coatings where bonding is a challenge. The Refresh 4150 System may be installed on pool decks, patios, balcony decks, breezeways, and many other common areas where recoating may be needed.

#### Warranty

AVM standard 1 year material warranty applies.

For complete warranty information go to [www.avmindustries.com](http://www.avmindustries.com)

#### Delivery, Storage, and Handling

- Delivery of AVM Refresh 4150 components must be in their original sealed containers with the manufacturer's name and label intact.
- Handle and store containers in accordance with printed instructions.
- Store at temperatures between 50 degrees and 90 degrees. Do not store materials in direct sunlight or where they may be damaged by water or rain.
- Keep all materials out of reach of children.



- If irritation occurs during use, liberally flush affected areas with water. If irritation continues see a physician.
- Shelf life is one year from manufacturing date in sealed, unopened containers.

#### Project Conditions

- Do not apply materials at temperatures below 50 degrees or if precipitation is imminent or above 90 degrees if applying in direct sunlight or 100 degrees in the shade.
- Provide adequate ventilation during installation.
- Warn personnel against hazards of material to skin and eyes.
- Protects adjacent surfaces that could be damaged during application.
- Concrete substrate must cure for a minimum 7 days and not exceed 10% moisture content when applying Epoxy primer 401 to the substrate. (A moisture blocking epoxy primer is also available)

#### System Application

The substrate surface must be structurally sound, clean, dry and free of efflorescence, paints, oils, dirt, dust, debris or any foreign matter that may prevent proper adhesion.

Nonmoving joints and cracks shall be addressed using Aussie Seal M.

All expansion joints or moving joints shall be honored using backer rod and sealant and/or expanding foam or equal, per expansion joint manufacturers requirements and recommendations.

Refresh 4150 may be applied directly to existing coatings provided they are fully adhered to the substrate and in good condition.

Depending on existing conditions additional preparation may be required such as sandblasting, water blasting or mechanically grinding the substrate. Reach out to your local AVM Representative for options on job specific recommendations.

A small test patch with Primer 401 should be completed to ensure proper bonding prior to full system application.

#### Installation

**Mixing AVM Primer 401** - Mix part A and Part B separately for 60 seconds, combine both parts and mix additional 2 minutes using a drill and clean paddle.

(No premeasuring needed as product is supplied in kits. Mix full kit quantities).

Do not mix more material than can be applied within 20 minutes due to quick cure times.

AVM Primer 401 may be applied using a sprayer, brush, or roller (Phenolic resin core roller) or solvent safe 3/8" nap roller.

Apply in an even and puddle free application at the rate of approx. 300sf per gallon.

Work in primer in areas that have pin holes and small voids which will help mitigate off gassing. Overly porous substrates may need an additional coat of 401 Primer which may be applied after the first coat has sufficiently cured.

**Primer should be slightly tacky when installing Topcoat Sealer 4150.**

Should primer be left to fully cure repriming is required prior to topcoat application.

Mixing AVM Topcoat Sealer 4150- always premix to ensure all pigment is sufficiently mixed.

AVM Topcoat Sealer 4150 may be applied using a low pressure airless spray equipment (using fan tip orifice size 0.018"-0.035" and hold tip 12"-18" from surface), brush or lint free 3/8"- 1/2" nap roller.

Do not overapply product. Topcoat Sealer 4150 should be applied in thin coats approx. 100sf per gallon on the 1st coat and 150sf on 2nd coat. It's always recommended to apply 2 thin coats to get complete and proper coverage.

A second coat may be installed after the 1st coat is dry to the touch.

## Quality Control

- Visually inspect all coated surfaces to ensure a full and proper coating application including corners, pinholes, drainage areas and hard to reach locations.
- All unsatisfactory areas shall be addressed and recoated before proceeding to next coat.

## Protection of Installed Work

The completed sections may be open to light foot traffic in 4-6 hours. (Dry times will vary pending temperatures and relative humidity). System may be open to heavy foot traffic in 24 hours.

## Maintenance

Periodic cleaning and maintenance are required.

For further information refer to the Topcoat Sealer 4150 maintenance instructions.

## Clean Up

**AVM Epoxy Primer 401** – Tools and equipment should be cleaned using an environmentally friendly solvent as permitted by local regulations immediately after use.

**AVM Topcoat Sealer 4150** – Tools and equipment may be cleaned with water immediately after use.

## Limitations

Refresh 4150 is not recommended for either interior or exterior below grade applications.

Not to be used in areas with water intrusion through the substrate.

Refresh 4150 System is not to be used in lieu of waterproofing system.

In addition, it will not prevent water penetration through unsound/cracking surfaces.

## Availability and Cost

Contact AVM Industries or your approved applicator for pricing and availability.

## Technical Services

Technical services are available by contacting our offices at: **888.414.1041** or **818.888.0050** or visit **www.avmindustries.com**

## System Specifications

See next page.

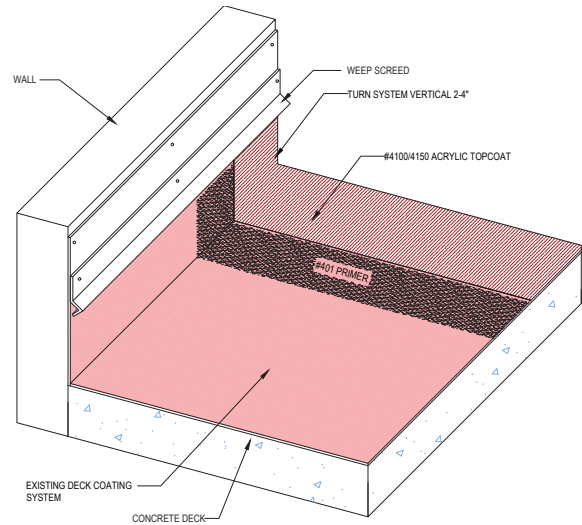
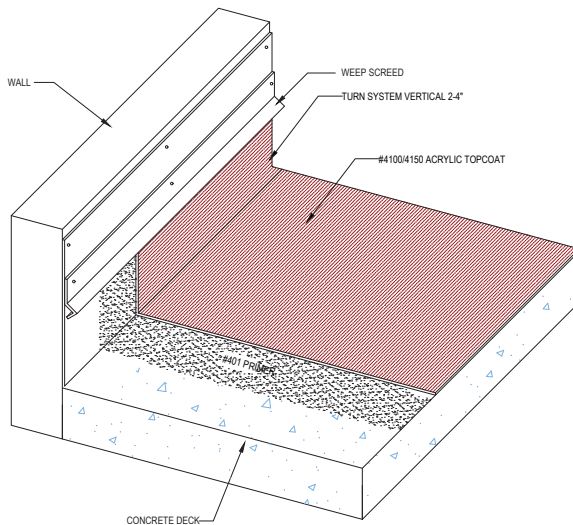
The following coverages are based on controlled tests. Actual coverages may vary.

Materials	Over Deck Coatings	Over Semi-Smooth Concrete	Over Porous Surfaces
AVM Top Coat Sealer 1st coat	100-120 sq. ft./gal.	100-150 sq. ft./gal.	75-100 sq. ft./gal.
AVM Top Coat Sealer 2nd Coat	150 sq. ft./gal.	150+ sq. ft./gal.	100+ sq. ft./gal.

Technical Data - AVM Top Coat Sealer 4150		General Data - AVM Top Coat Sealer 4150	
Weatherometer	No Cracking, Softening, Crazing	Shelf Life: (Liquids)	One year in original unopened packaging.
Wind Uplift	(Tested/passed -227 MPH) Approved at 90 MPH	Storage Conditions	Store dry at 50°-90°F. If frozen, discard
Abrasion	4.58% (Pass)	Top Coat Colors	30 Standard colors
Bond Strength (Once Cured)	134 PSI	Top Coat Colors	Custom colors are available – call for details

Item / Component	Packaging	Approx Shipping Weights	VOC
Top Coat Sealer 4150	2.0/5.0 gal. pails	19.0/47.0 lbs	99 Grams/Liter

Note: Top Coat Sealer 4150 is part of the ICC approved AVM System 100, Elasto Fiberdeck deck coating system. Additional information is available on AVM Spec Sheet 30100-EFD.



For a complete list of details in CAD or PDF, please visit our website at [www.avmindustries.com](http://www.avmindustries.com).

**AVM Industries, Inc.**  
8245 Remmet Ave, Canoga Park, CA 91304  
888.414.1041 818.888.0050

**Quality Waterproofing Products**



**www.avmindustries.com**