

DETAIL #:
0550G-2808
 AVM System 550G

Slab Tie Penetration

Aussie Skin 550G



ANCHORING SYSTEM
 BY OTHERS

NON-SHRINK GROUT

AUSSIE SWELL
 WATERSTOP

AUSSIE SEAL M 2" X 2"
 WITH 3/4" CANT AT BASE

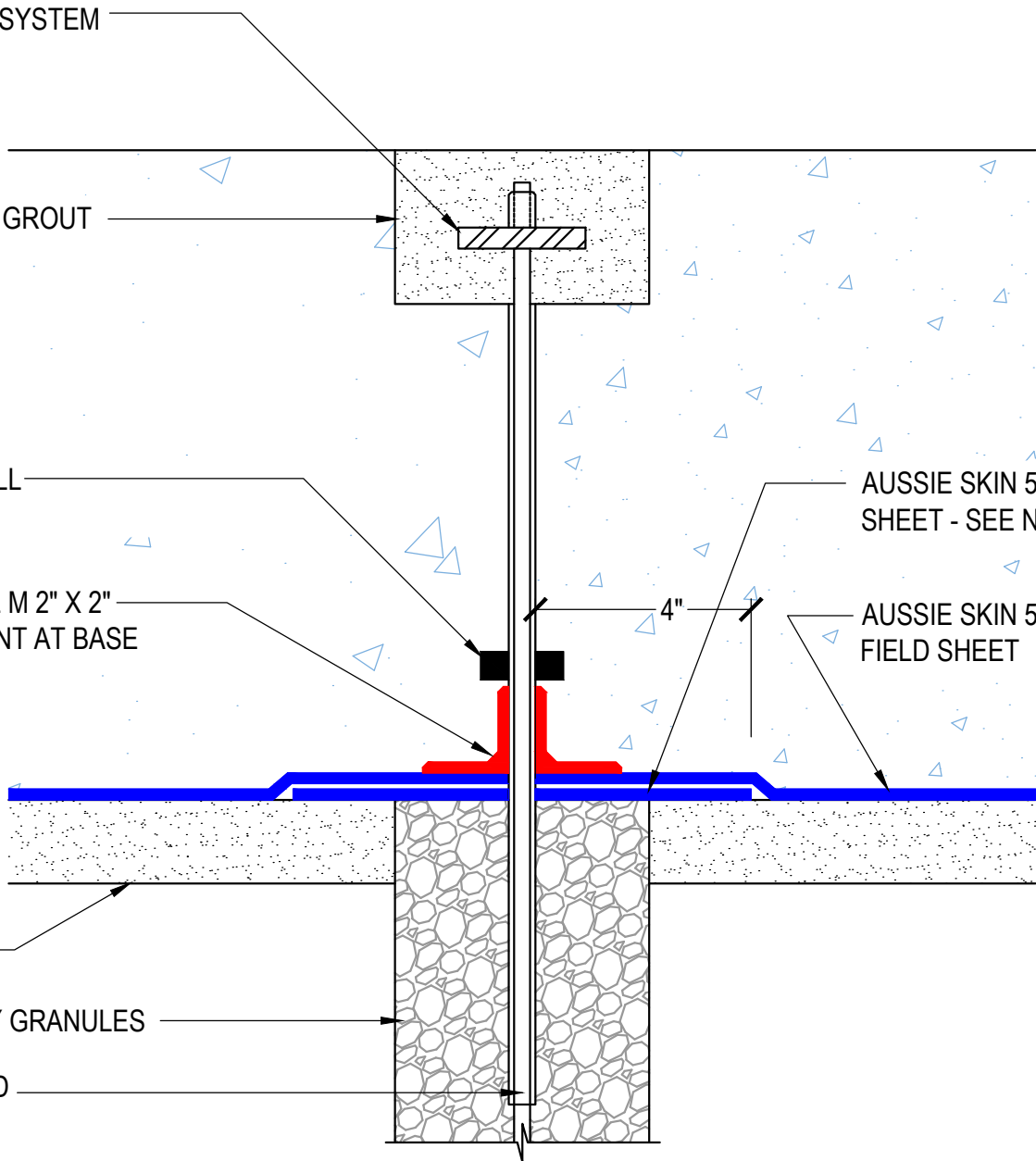
AUSSIE SKIN 550G TARGET
 SHEET - SEE NOTES

AUSSIE SKIN 550G
 FIELD SHEET

RAT SLAB

AUSSIE CLAY GRANULES

ANCHOR ROD



Notes:

1. Aussie Skin 550G is a Heavy, Duty, Easy to Install, Puncture Resistant Sheet Waterproofing Membrane with added technologies creating excellent adhesion between the membrane and wet Concrete or Shot-Crete. Creating excellent adhesion between the membrane and wet Concrete or Shot-Crete.
2. All surfaces must be clean and sound before installing the lap joints. (Remove excess sand before applying double sided tape)
3. Target sheet is required if gap between field sheet and rod is >2"