



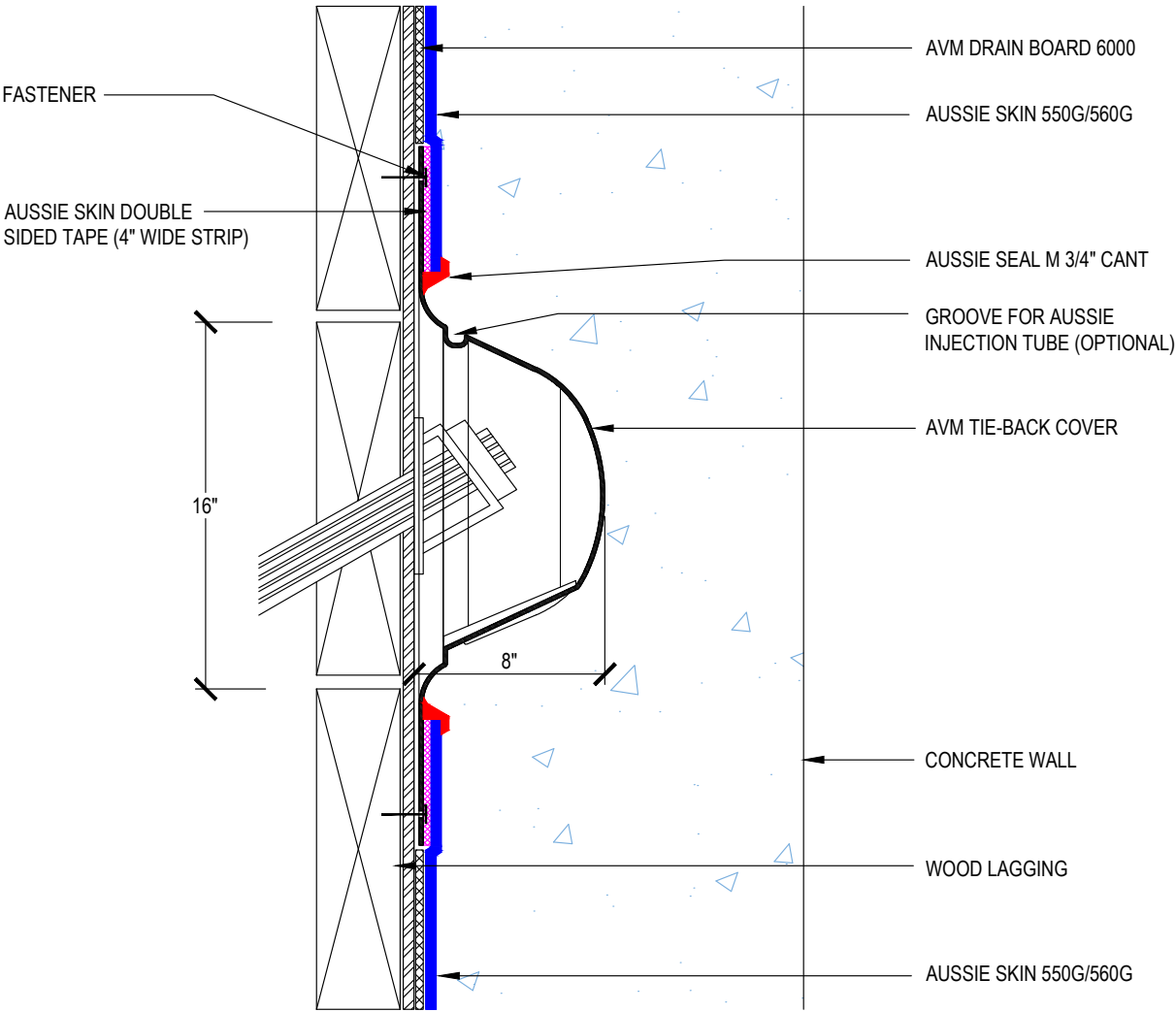
Installation Instructions – 8 Inch Injectable Tie Back Cover

1. Cut a piece of Aussie Skin approximately 36"x36". Mark a 23"x23" square box in the center of the Aussie Skin piece.
2. Cut out a 23"x23" square hole in the Aussie Skin
3. Hang the 8" tie back cover with the trapezoid section in the dome facing up.
4. Set the Aussie Skin piece over the 8" tie back cover to make sure it fits properly. Make sure Aussie skin material does not cover the square marker line on the tie back cover.
5. Apply Double Sided Tape to the Tie Back Cover. Tape should touch the square marker. Make sure to use a pressure roller to ensure proper adhesion.
6. Continue applying double sided tape to all four sides of the Tie Back Cover
7. Set the piece of Aussie Skin over the dome onto the double-sided tape. Roll thoroughly with steel roller to ensure proper adhesion.
8. Mark Aussie Skin approximately 1" from edge.
9. Apply Aussie Seal M sealant 1" onto the Aussie Skin and 1" onto to the Cone's base.
10. Spread Sealant with flat tool to ensure a complete seal all the way to the cone's base.
11. Completed 8" Tie Back Cover installation. Allow sealant to fully cure.

DETAIL #:
0550G_0560G-1534
System:
Aussie Skin 550G/560G

8" Tie-Back Cover

Aussie Skin 550G/560G



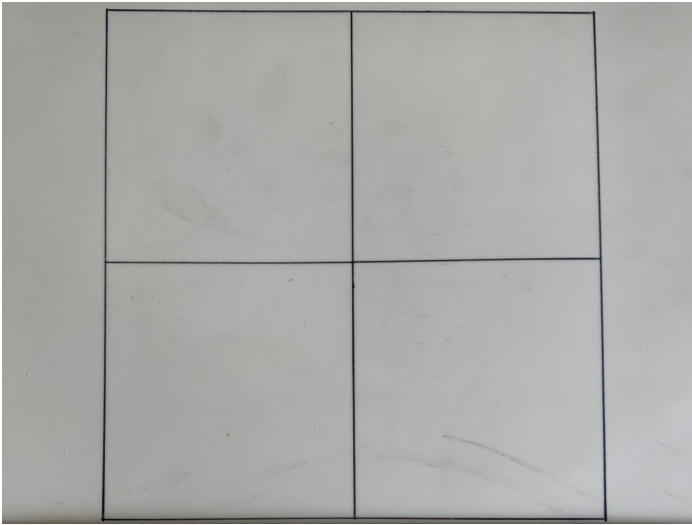
AVM Industries, Inc.
8245 Remmet Ave, Canoga Park, CA 91304

Quality Waterproofing Products

888.414.1041 818.888.0050
www.avmindustries.com

FILE NAME: 0550G_0560G-1534

Protected by Copyright - AVM Industries, Inc. Revision Date 12/20/2020



Step 1: Cut a piece of Aussie Skin approximately 36"x36". Mark a 23" square box in the center of the Aussie Skin piece.



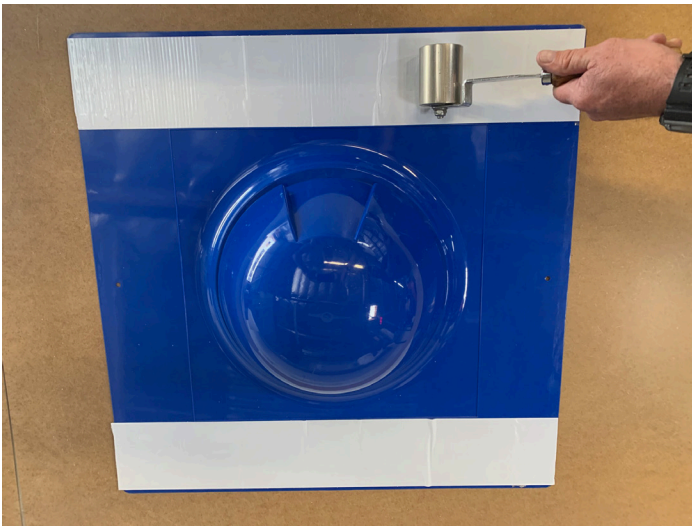
Step 2: Cut out the 23" center hole in the Aussie Skin



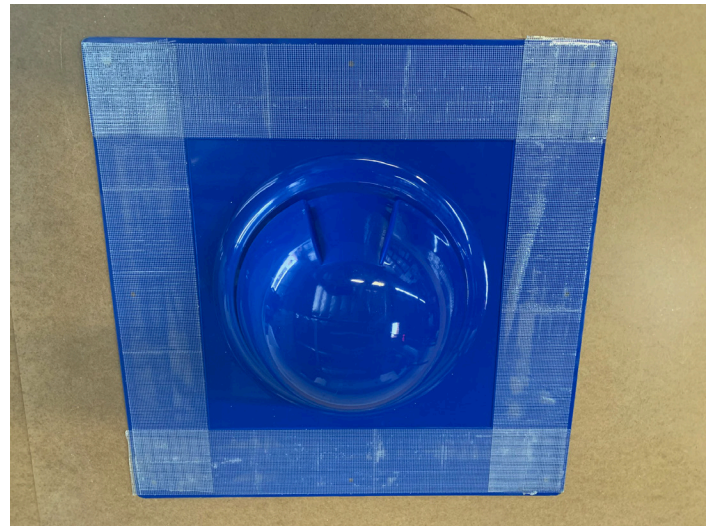
Step 3: Hang the 8" tie back cover with the trapezoid section in the dome facing up.



Step 4: Set the Aussie Skin piece over the 8" tie back cover to make sure it fits properly. Make sure Aussie skin material does not cover the square marker line on the tie back cover.



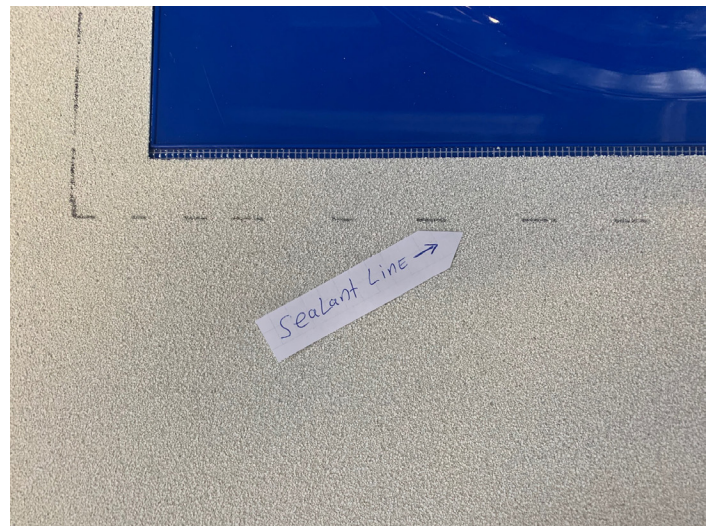
Step 5: Apply Double Sided Tape to the Tie Back Cover. Tape should touch the square marker. Make sure to use a pressure roller to ensure proper adhesion.



Step 6: Continue applying double sided tape to all four sides of the Tie Back Cover.



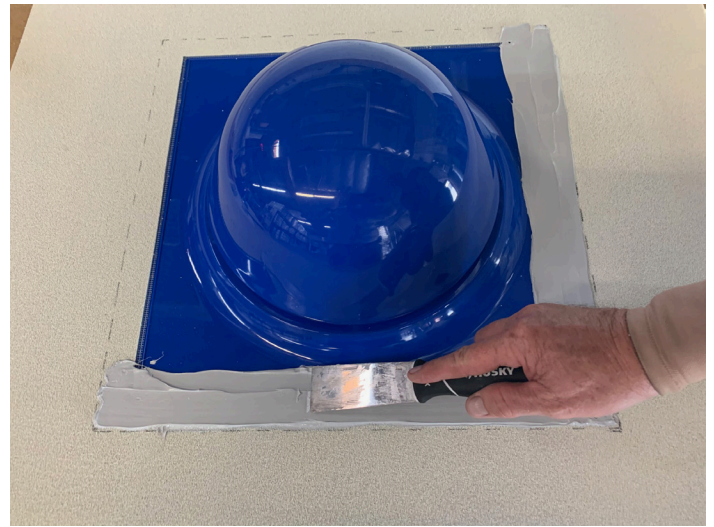
Step 7: Set the piece of Aussie Skin over the dome onto the double-sided tape. Roll thoroughly with steel roller to ensure proper adhesion.



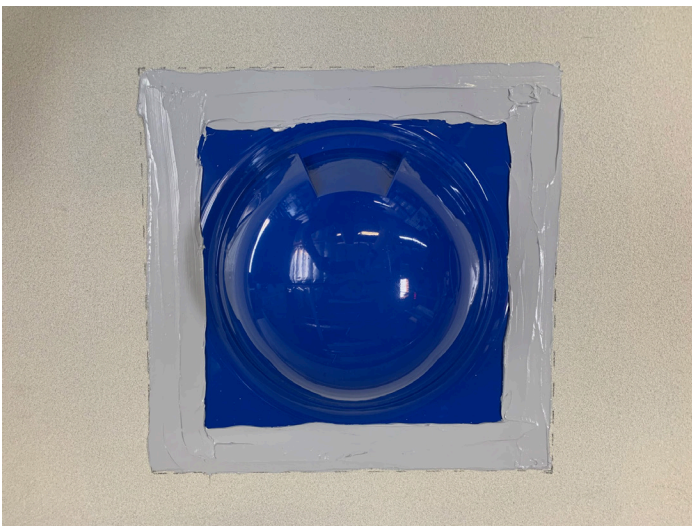
Step 8: Mark Aussie Skin approximately 1" from edge.



Step 9: Apply Aussie Seal M sealant 1" onto the Aussie Skin and 1" onto to the Cone's base.



Step 10: Spread Sealant with flat tool to ensure a complete seal all the way to the cone's base.



Step 11: Completed 8" Tie Back Cover installation. Allow sealant to fully cure.



Installation Instructions – Injection Tube

1. Cut a piece of the Injection Tube (black Tube) 43.5" - 43.75" long.
2. Insert each Injection Tube edge into a separate Elbow. (Make sure it's pushed all the way in)
3. Set the Injection Tube into the groove in the Tie Back Cover with Elbows landing on the flat part of the dome as shown.
4. Secure both Elbows together with a Zip Tie as shown.
5. Cut two pieces of Clear Feeder Hoses a min 6 Inches longer than the thickness of the concrete. Example: For 12" thick concrete, each Feeder Hose should be a min 18" long. (12"+6"=18")
6. Insert each Feeder Hose into a separate Elbow as shown.
7. Secure Feeder Hoses with Zip Ties as needed. (Feeder Hoses will need to be secured to the rebar cage such that they will stick out of the concrete wall once poured.
8. Tape shut the edges of Feeder Tubes with masking tape to ensure they stay clean of debris until concrete is poured



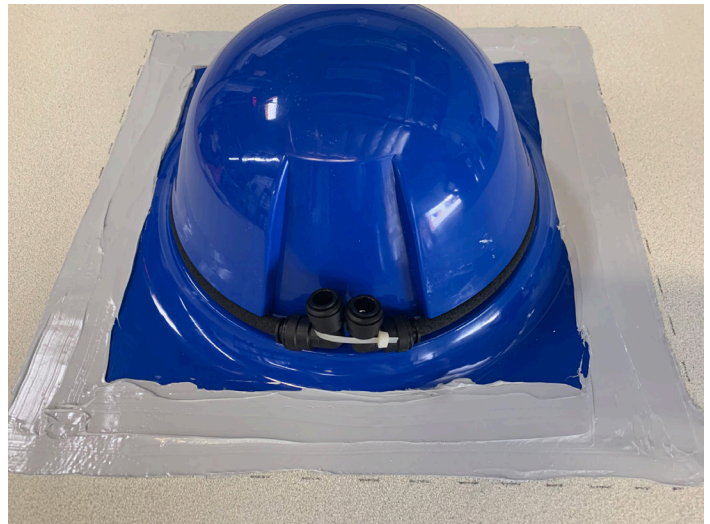
Step 1: Cut a piece of the Injection Tube (black Tube) 43.5" - 43.75" long.



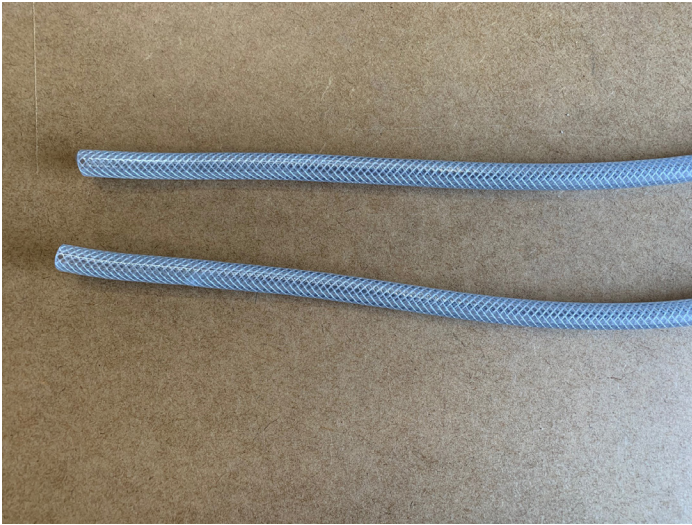
Step 2: Insert each Injection Tube edge into a separate Elbow. (Make sure it's pushed all the way in)



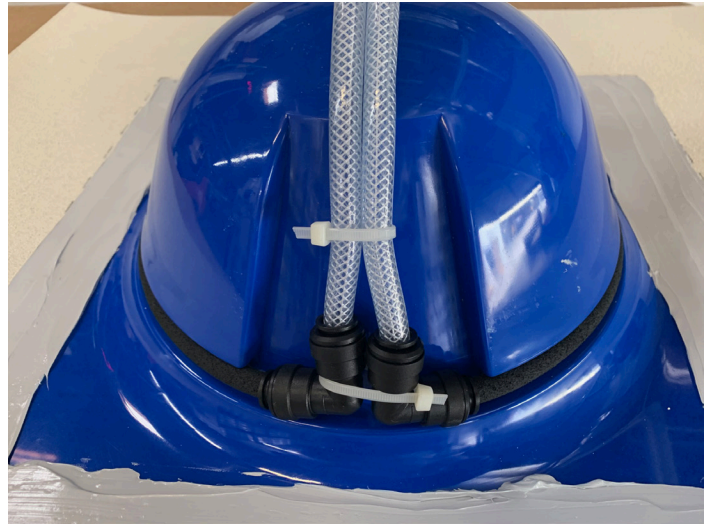
Step 3: Set the Injection Tube into the groove in the Tie Back Cover with Elbows landing on the flat part of the dome as shown.



Step 4: Secure both Elbows together with a Zip Tie as shown.



Step 5: Cut two pieces of Clear Feeder Hoses a min 6 Inches longer than the thickness of the concrete. Example: For 12" thick concrete, each Feeder Hose should be a min 18" long. (12"+6"=18").



Step 6: Insert each Feeder Hose into a separate Elbow as shown.



Step 7: Secure Feeder Hoses with Zip Ties as needed. (Feeder Hoses will need to be secured to the rebar cage such that they will stick out of the concrete wall once poured.



Step 8: Tape shut the edges of Feeder Tubes with masking tape to ensure they stay clean of debris until concrete is poured.