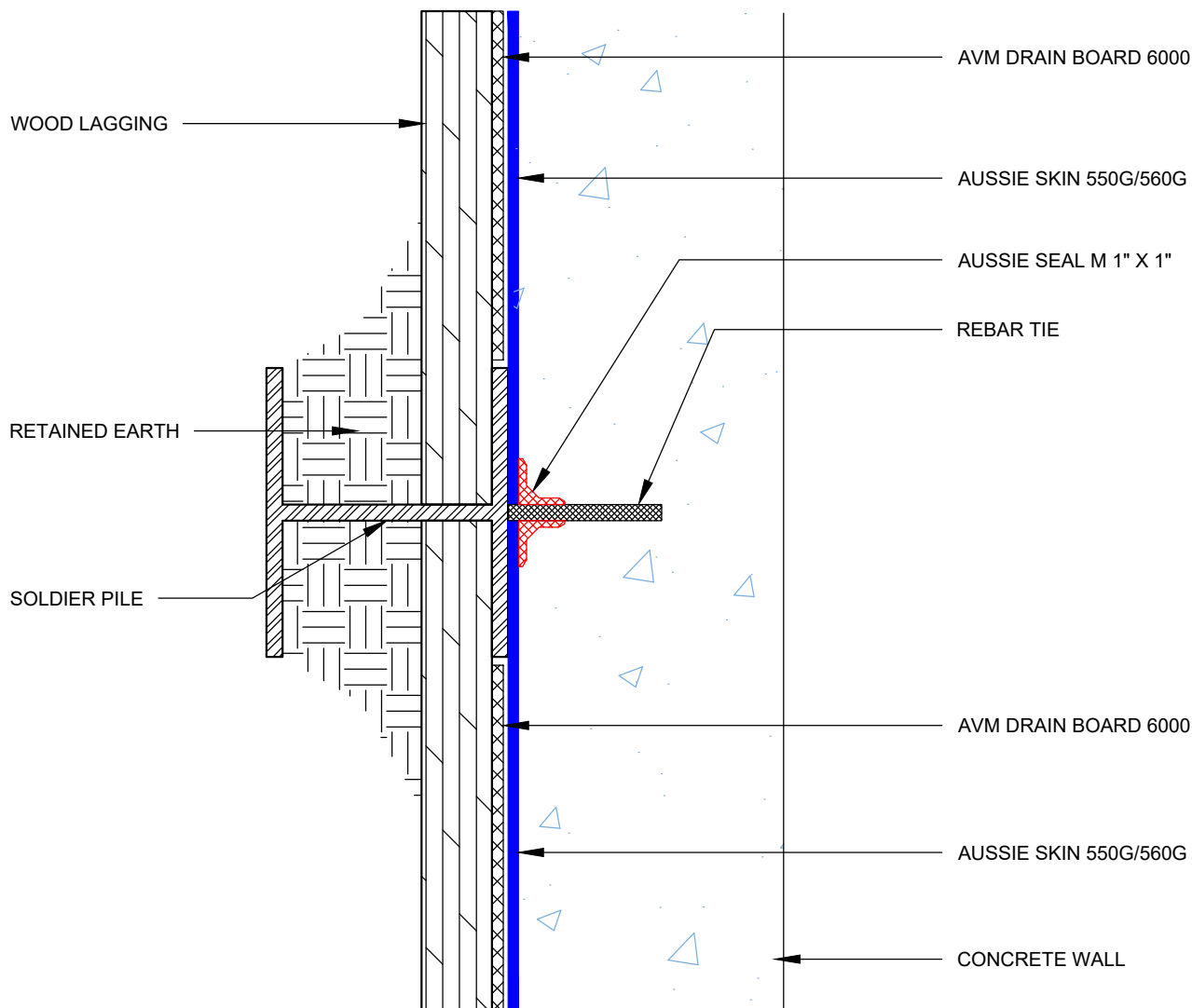


DETAIL #:  
**0550G\_0560G-4100**  
 AVM System 550G/560G

# Rebar Tie Single Layer System



Aussie Skin 550G/560G



**Notes:**

1. Aussie Skin 550G and 560G are Heavy Duty, Easy to Install, Puncture Resistant Sheet Waterproofing Membranes with added technologies creating excellent adhesion between the membrane and wet Concrete or Shotcrete. Aussie Skin 560G is an approved methane/VOC barrier.