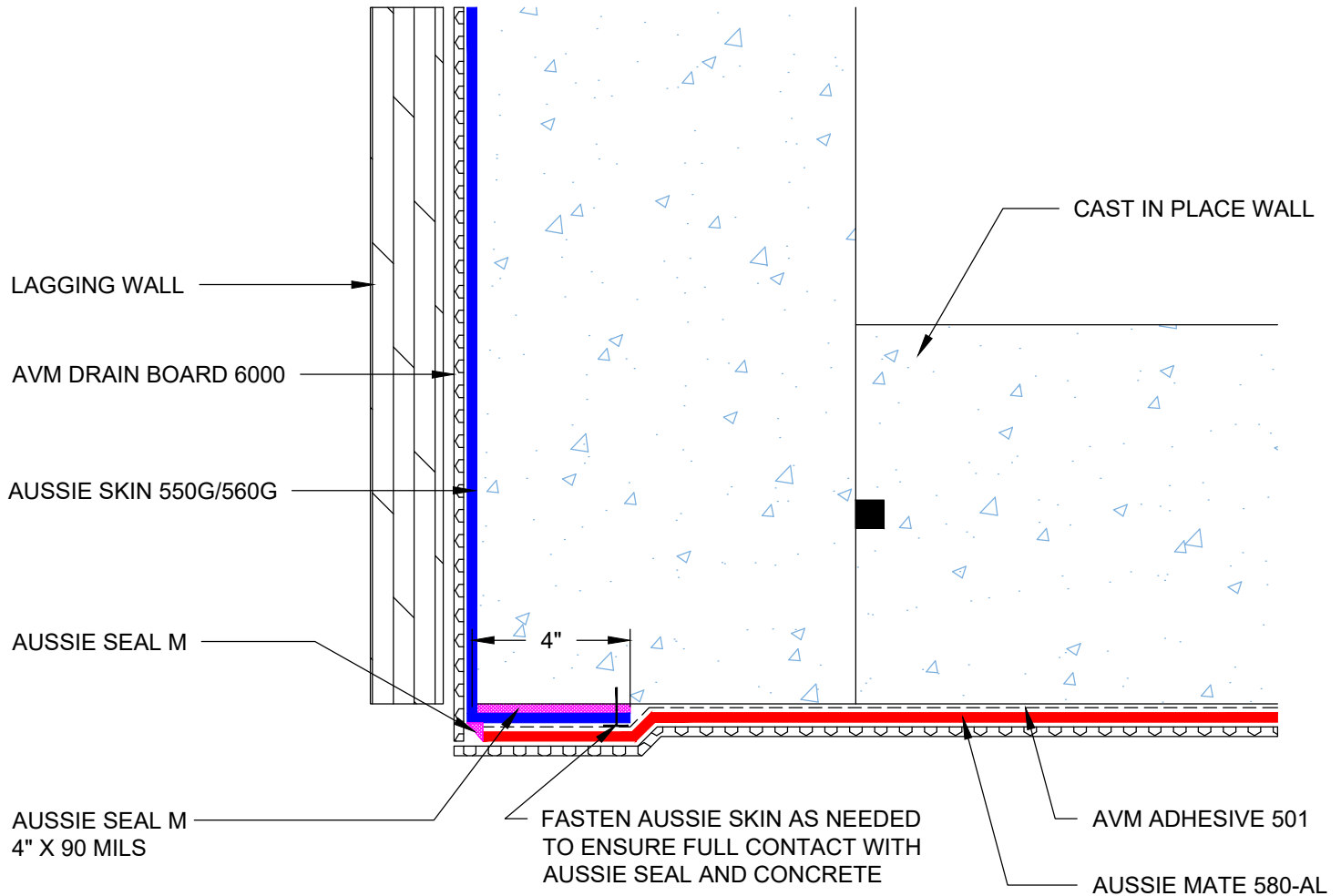


DETAIL #:
0550G_0560G-7010
 AVM System 550G/560G

Aussie Skin Lagging Wall to Aussie Mate Free Standing Wall Transition



PLAN VIEW

Notes:

1. Aussie Skin 550G and 560G are Heavy Duty, Easy to Install, Puncture Resistant Sheet Waterproofing Membranes with added technologies creating excellent adhesion between the membrane and wet Concrete or Shotcrete. Aussie Skin 560G is an approved methane/VOC barrier.