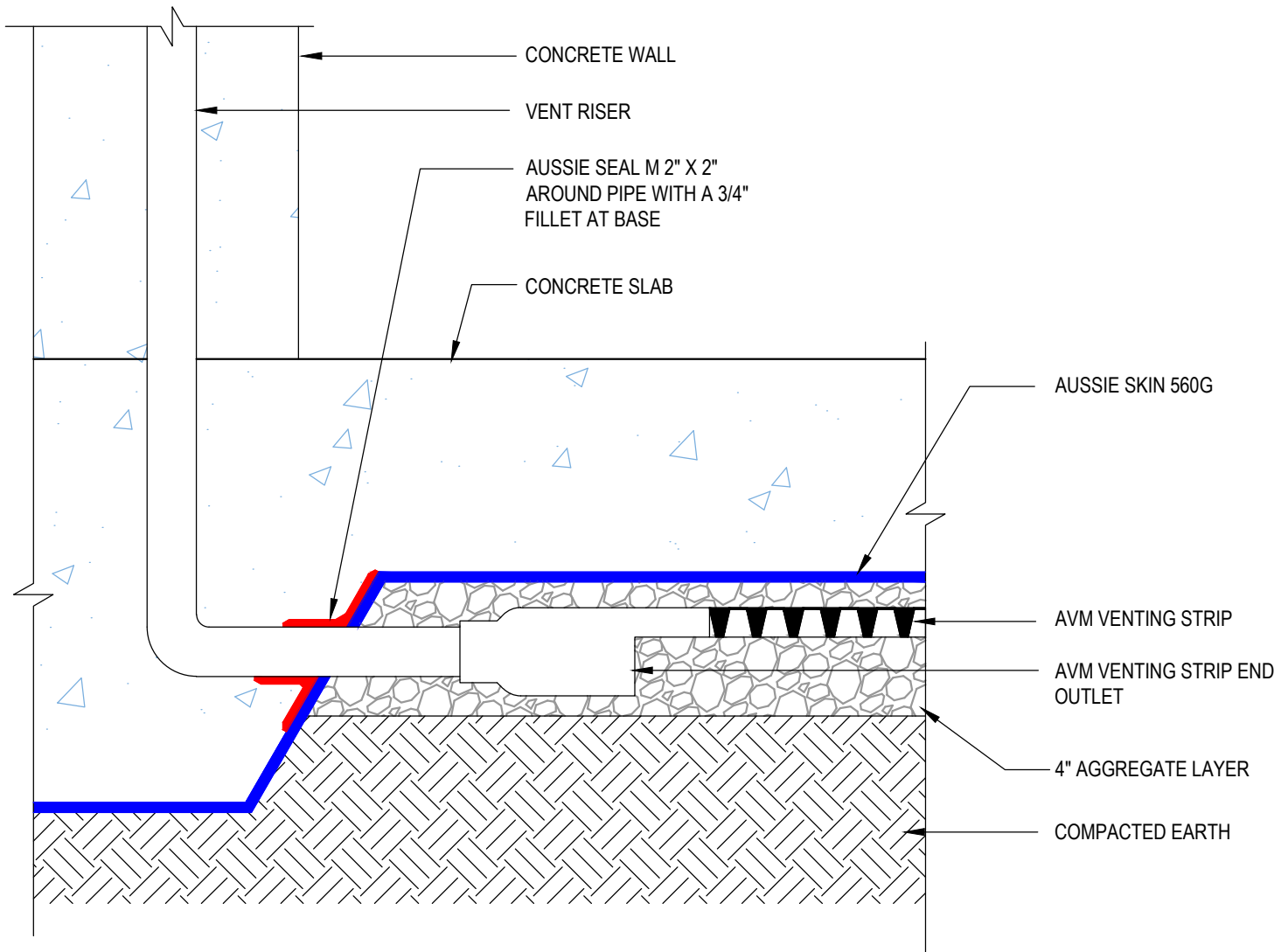


DETAIL #:  
0560G-0101-M  
System:  
Aussie Skin 560G

## AVM Methane Gas Venting System End Outlet Connector



AVM AUSSIE SKIN 560G - METHANE ONLY



### Notes:

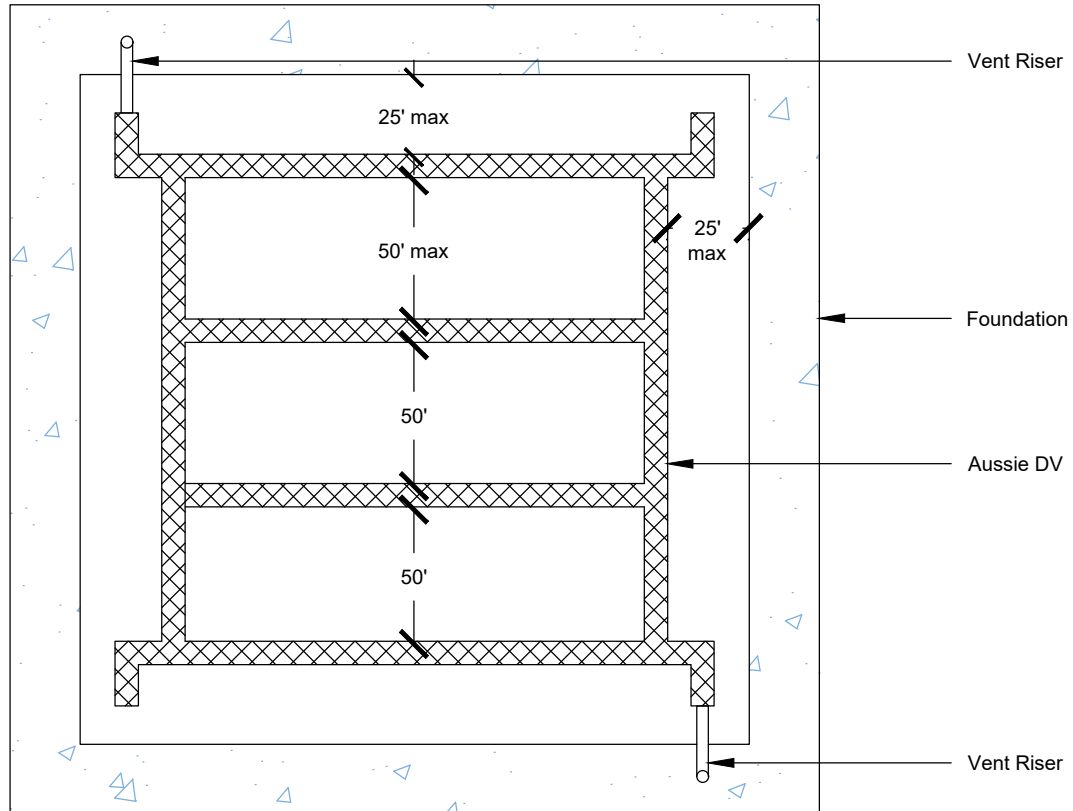
1. Aussie Skin 560G is a Methane and Shotcrete Approved Heavy Duty, Easy to Install, Puncture Resistant Sheet Waterproofing Membrane with added technologies creating excellent adhesion between the membrane and wet Concrete or Shot-Crete.
2. All surfaces must be clean and sound before installing the lap joints. (Remove excess sand before applying double sided tape)
3. See details AVM-560G-6000, AVM-560G-6004, and AVM-560G-6010 for Aussie Skin Lap Details

DETAIL #:  
0560G-0110-M  
System:  
Aussie Skin 560G

## Aussie DV Vent Layout - Plan View



AVM AUSSIE SKIN 560G - METHANE ONLY



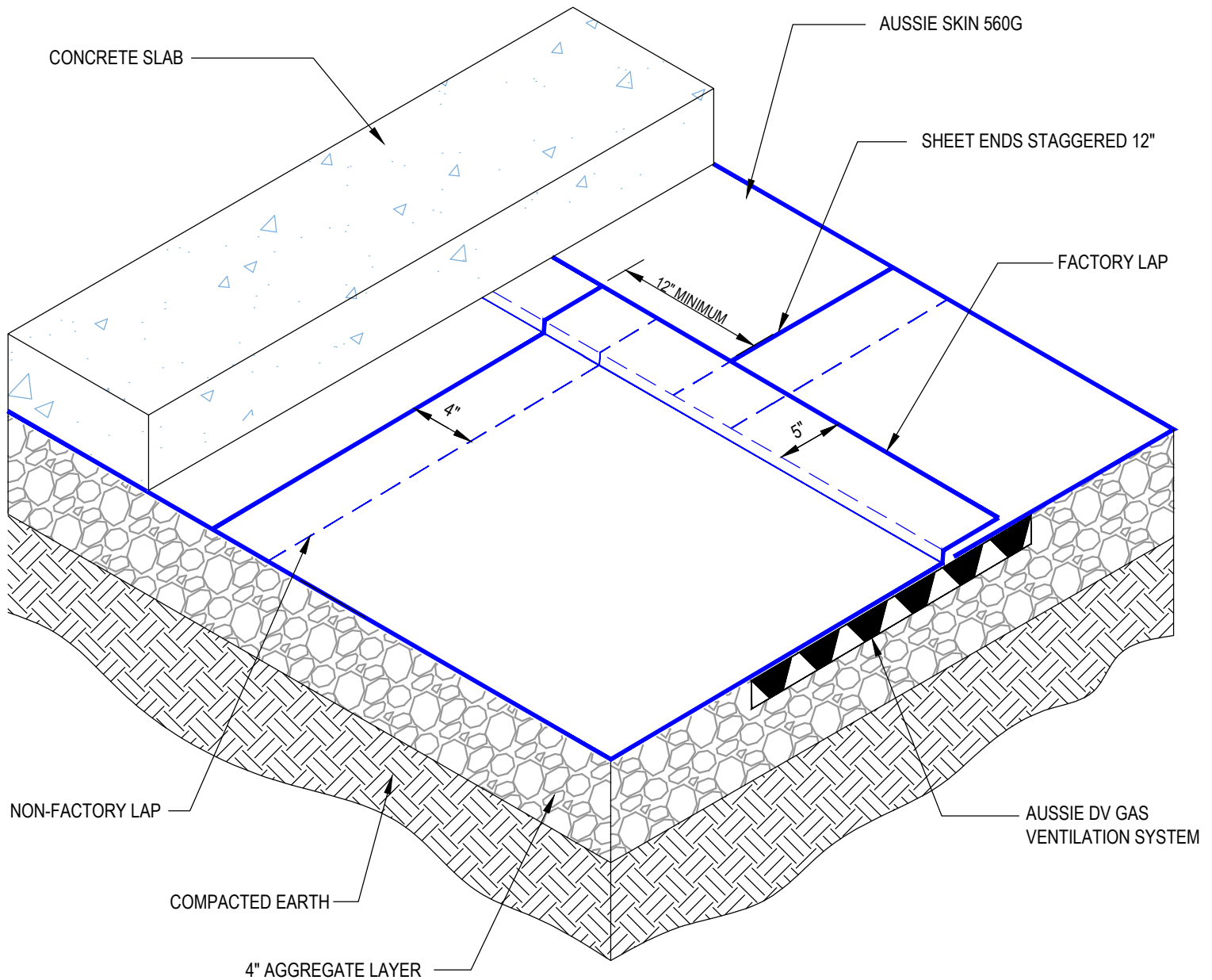
### Notes:

1. Aussie Skin 560G is a Methane and Shotcrete Approved Heavy Duty, Easy to Install, Puncture Resistant Sheet Waterproofing Membrane with added technologies creating excellent adhesion between the membrane and wet Concrete or Shot-Crete.
2. All surfaces must be clean and sound before installing the lap joints. (Remove excess sand before applying double sided tape)
3. See details AVM-560G-6000, AVM-560G-6004, and AVM-560G-6010 for Aussie Skin Lap Details

DETAIL #:  
0560G-4001-M  
System:  
Aussie Skin 560G

## Typical Under Slab Assembly Compacted Earth

AVM AUSSIE SKIN 560G - METHANE ONLY



### Notes:

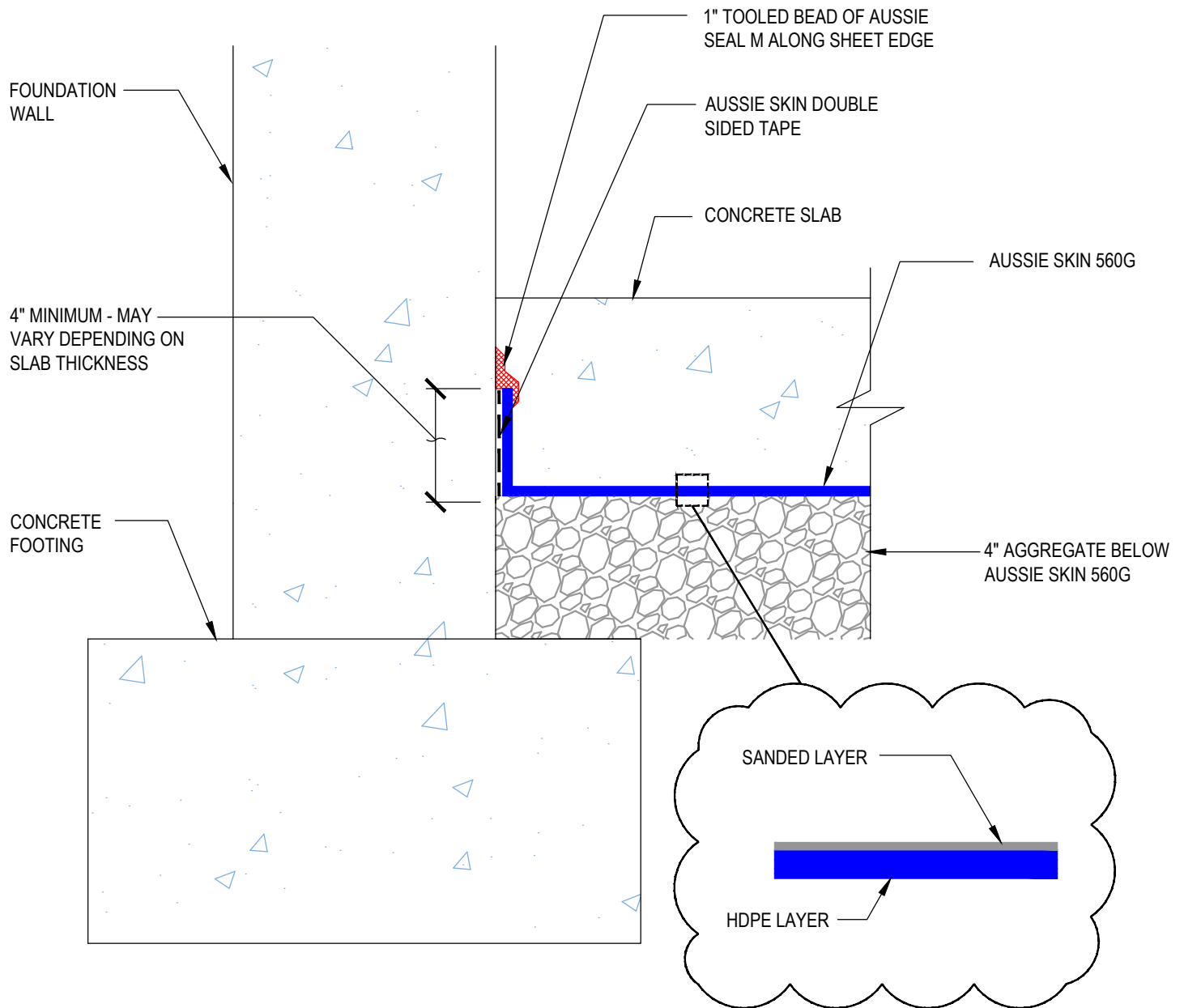
1. Aussie Skin 560G is a Methane and Shotcrete Approved Heavy Duty, Easy to Install, Puncture Resistant Sheet Waterproofing Membrane with added technologies creating excellent adhesion between the membrane and wet Concrete or Shot-Crete.
2. All surfaces must be clean and sound before installing the lap joints. (Remove excess sand before applying double sided tape)

DETAIL #:  
0560G-4018-M  
System:  
Aussie Skin 560G

## Typical Vertical Membrane Termination



AVM AUSSIE SKIN 560G - METHANE ONLY



### Notes:

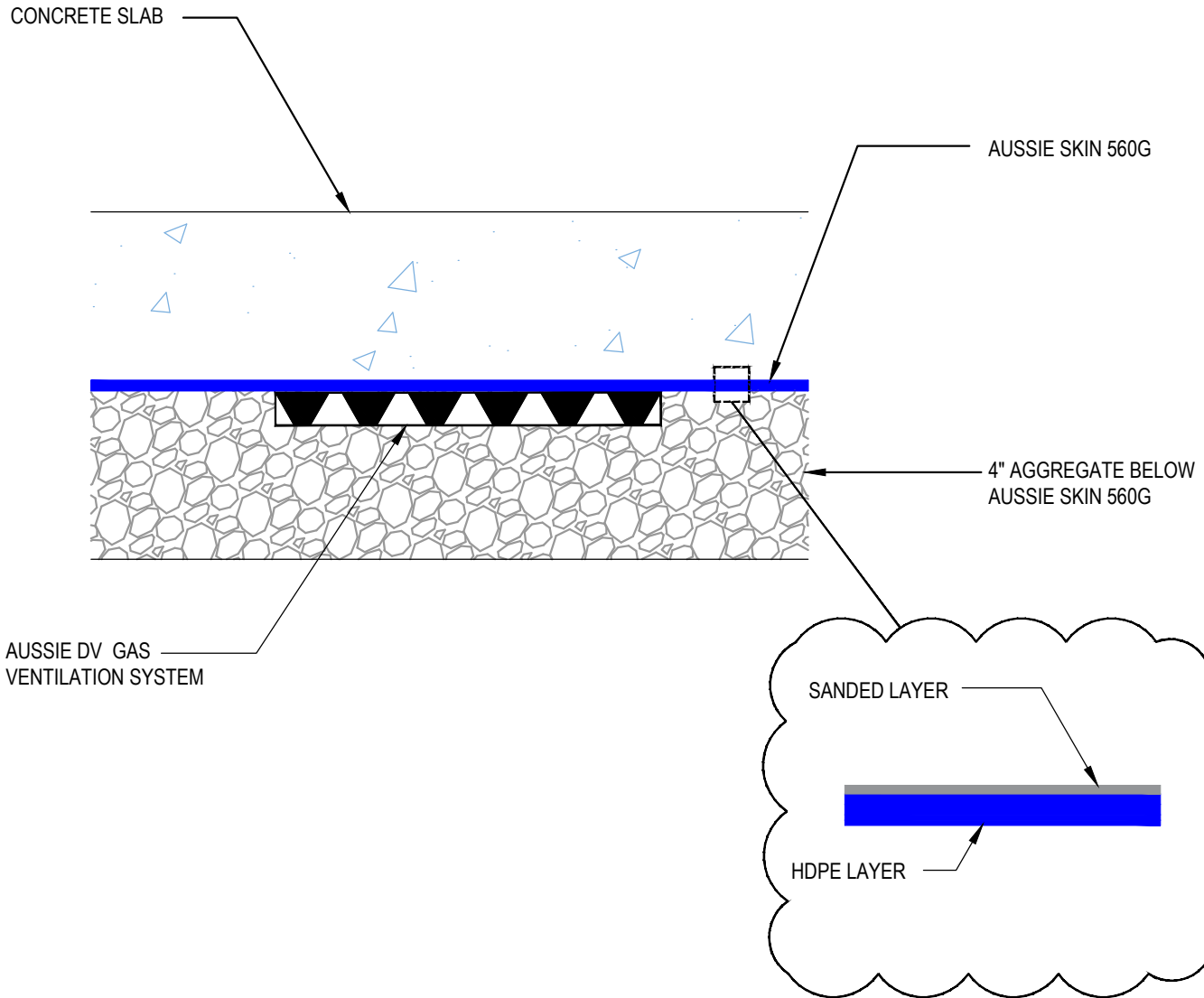
1. Aussie Skin 560G is a Methane and Shotcrete Approved Heavy Duty, Easy to Install, Puncture Resistant Sheet Waterproofing Membrane with added technologies creating excellent adhesion between the membrane and wet Concrete or Shot-Crete.
2. All surfaces must be clean and sound before installing the lap joints. (Remove excess sand before applying double sided tape)

DETAIL #:  
0560G-4020-M  
System:  
Aussie Skin 560G

## Sub-Slab Vent System



AVM AUSSIE SKIN 560G - METHANE ONLY



### Notes:

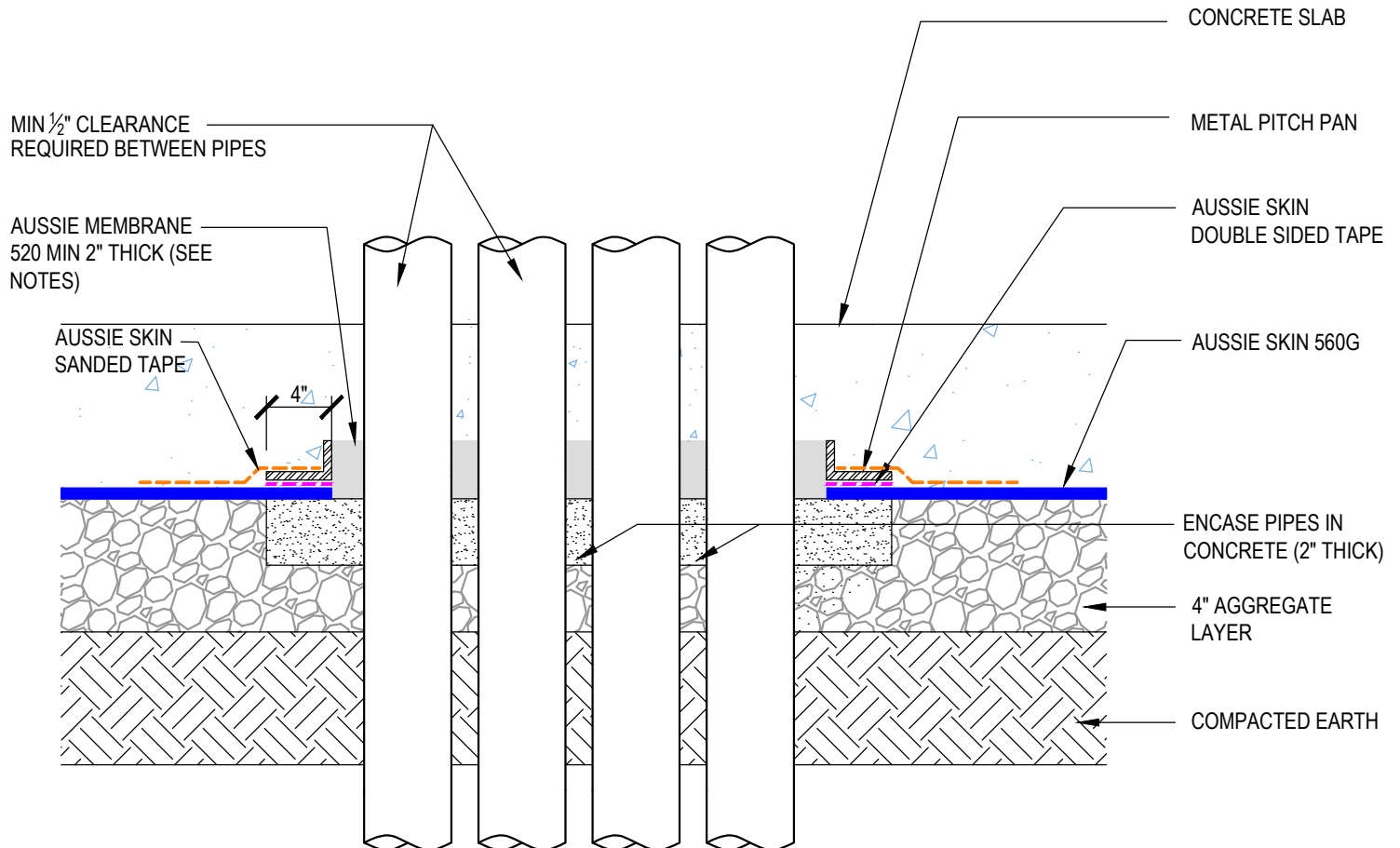
1. Aussie Skin 560G is a Methane and Shotcrete Approved Heavy Duty, Easy to Install, Puncture Resistant Sheet Waterproofing Membrane with added technologies creating excellent adhesion between the membrane and wet Concrete or Shot-Crete.
2. All surfaces must be clean and sound before installing the lap joints. (Remove excess sand before applying double sided tape)

DETAIL #:  
0560G-6710-M  
System:  
Aussie Skin 560G

## Multiple Pipe Bank Pitch Pan



AVM AUSSIE SKIN 560G - METHANE ONLY



### Notes:

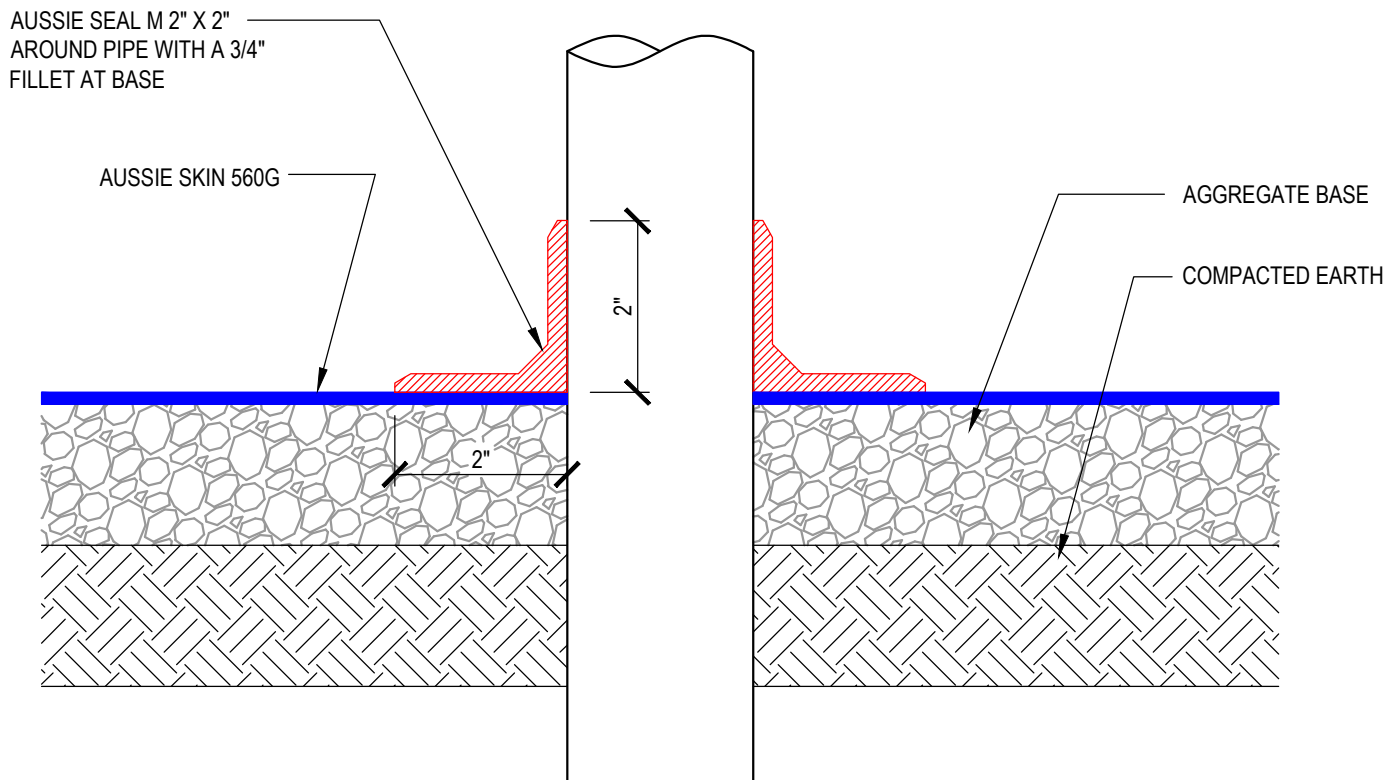
1. Aussie Skin 560G is a Methane and Shotcrete Approved Heavy Duty, Easy to Install, Puncture Resistant Sheet Waterproofing Membrane with added technologies creating excellent adhesion between the membrane and wet Concrete or Shot-Crete.
2. All surfaces must be clean and sound before installing the lap joints. (Remove excess sand before applying double sided tape)

DETAIL #:  
0560G-6712-M  
System:  
Aussie Skin 560G

## Vertical Pipe Penetration



AVM AUSSIE SKIN 560G - METHANE ONLY



### Notes:

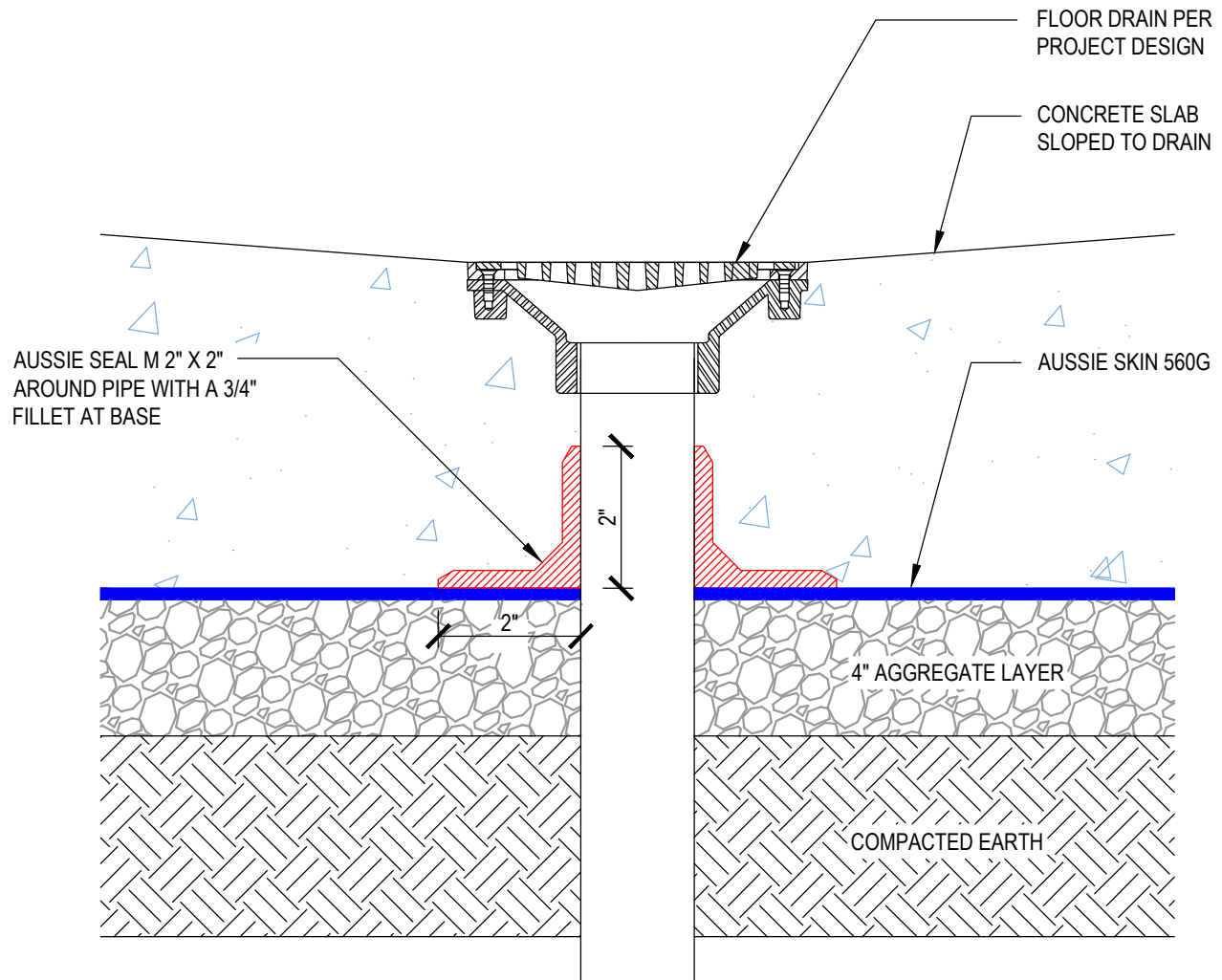
1. Aussie Skin 56G0 is a Methane and Shotcrete Approved Heavy Duty, Easy to Install, Puncture Resistant Sheet Waterproofing Membrane with added technologies creating excellent adhesion between the membrane and wet Concrete or Shot-Crete.
2. All surfaces must be clean and sound before installing the lap joints. (Remove excess sand before applying double sided tape)

DETAIL #:  
0560G-6714-M  
System:  
Aussie Skin 560G

## Typical Floor Drain



AVM AUSSIE SKIN 560G - METHANE ONLY



### Notes:

1. Aussie Skin 560G is a Methane and Shotcrete Approved Heavy Duty, Easy to Install, Puncture Resistant Sheet Waterproofing Membrane with added technologies creating excellent adhesion between the membrane and wet Concrete or Shot-Crete.
2. All surfaces must be clean and sound before installing the lap joints. (Remove excess sand before applying double sided tape)