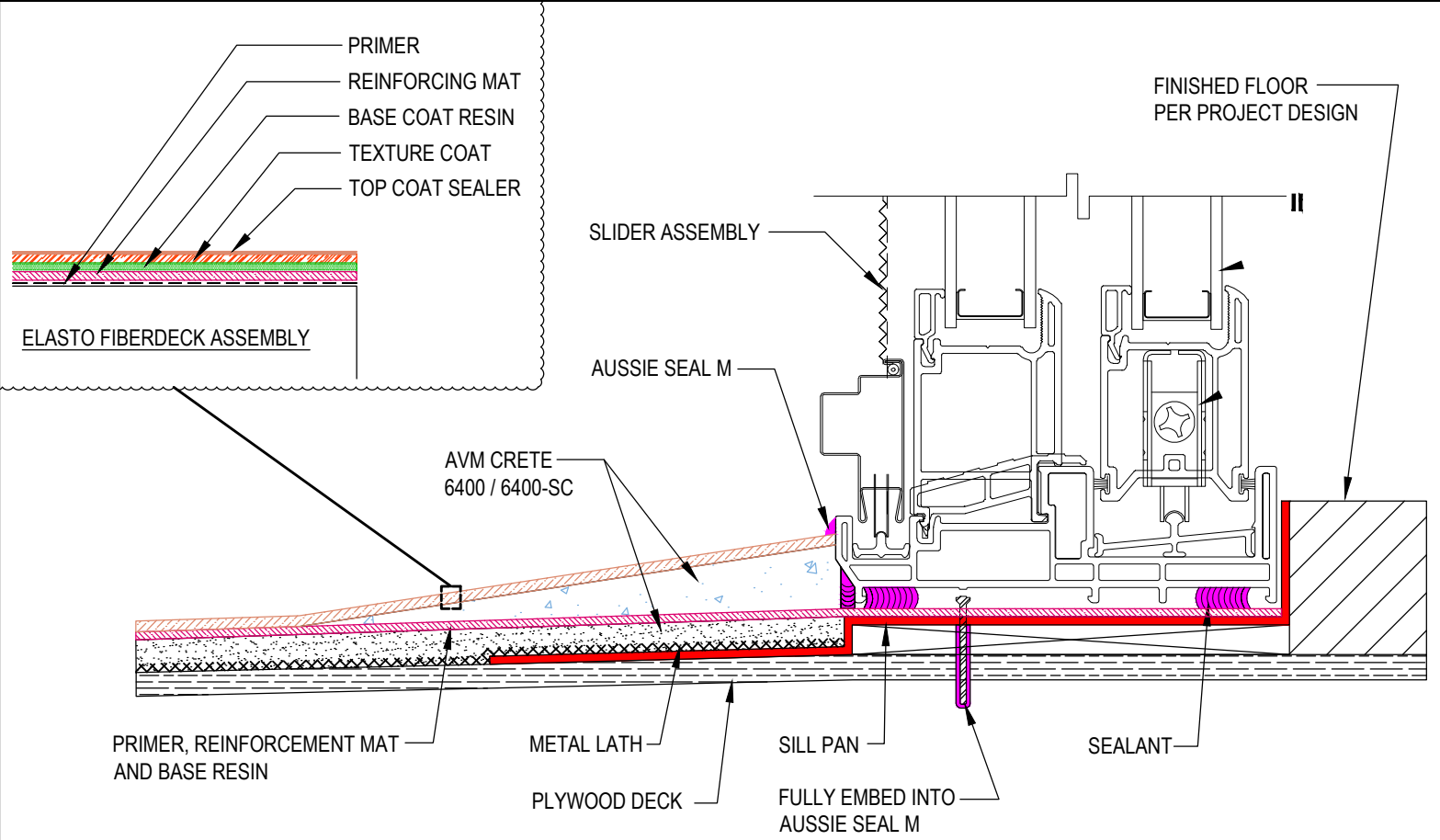


DETAIL #:
0100-EFD-152-P-CS
 AVM System 100
 Elasto Fiberdeck

**ADA Compliant Sliding Door
 Over Plywood Substrate**
 AVM System 100 Elasto Fiberdeck



Notes:

1. To ensure proper drainage, do not block the pre-existing weep holes or other drainage openings of the door assembly
2. Ensure water exiting the weep holes drains away from the door