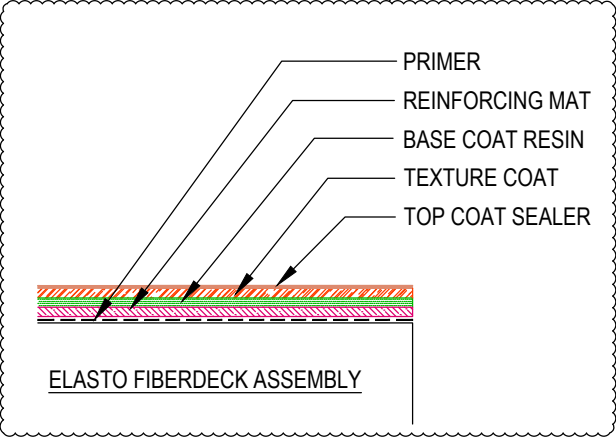
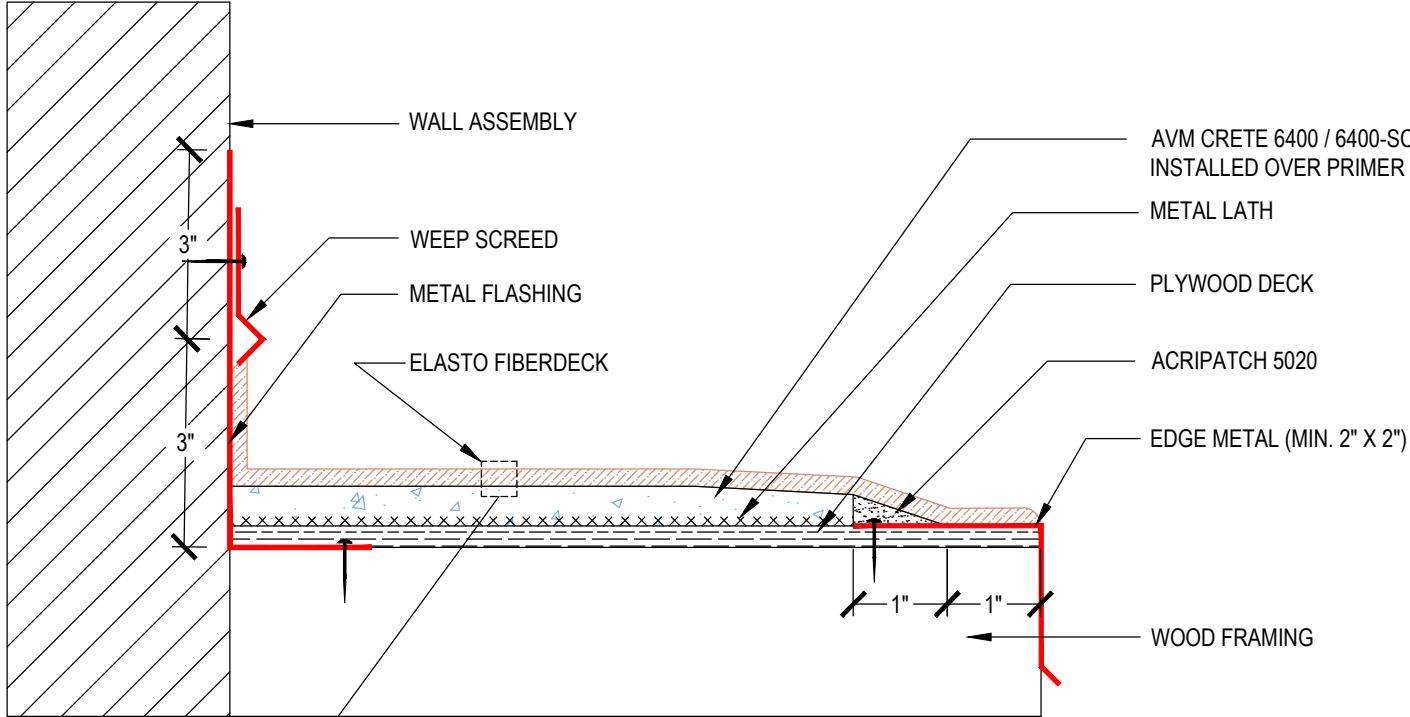


DETAIL #:  
 0100-EFD-502-P-CS  
 AVM System 100  
 Elasto Fiberdeck

# Assembly Over Plywood Substrate

AVM System 100 Elasto Fiberdeck



- Notes:**
1. Extend membrane, texture, and topcoat to edge of sheet metal flashing
  2. Membrane to be bonded to sheet metal edge
  3. Terminate Acripatch 1" from edge