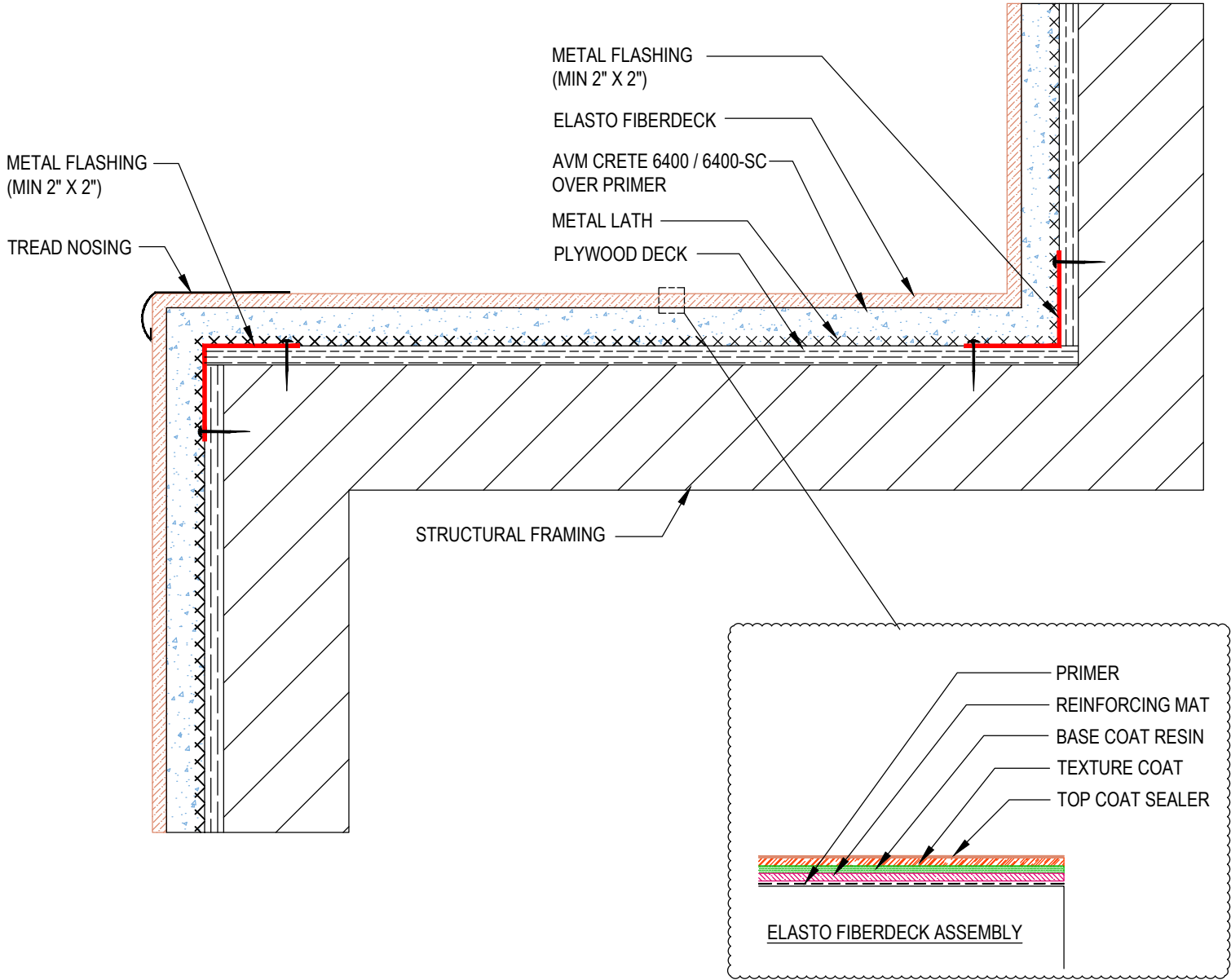


DETAIL #:  
**0100-EFD-602-P-CS**  
 AVM System 100  
 Elasto Fiberdeck

**Stairs Over Plywood Substrate**  
**AVM Crete on Tread & Riser**  
 AVM System 100 Elasto Fiberdeck



**Notes:**

1. For sheet metal installation please refer to detail # 0100-EFD-621-P-ISO