

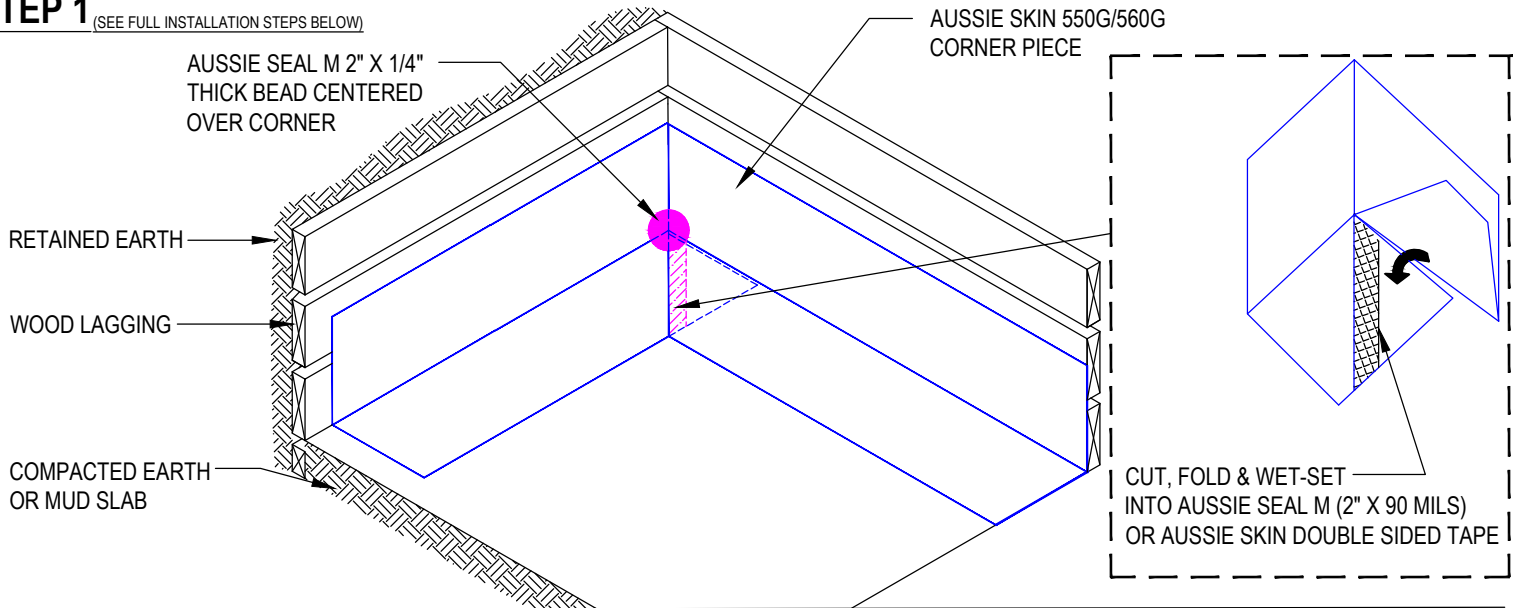
DETAIL #:
0550G_0560G-6210
 Aussie Skin 550G_560G

Inside Corner

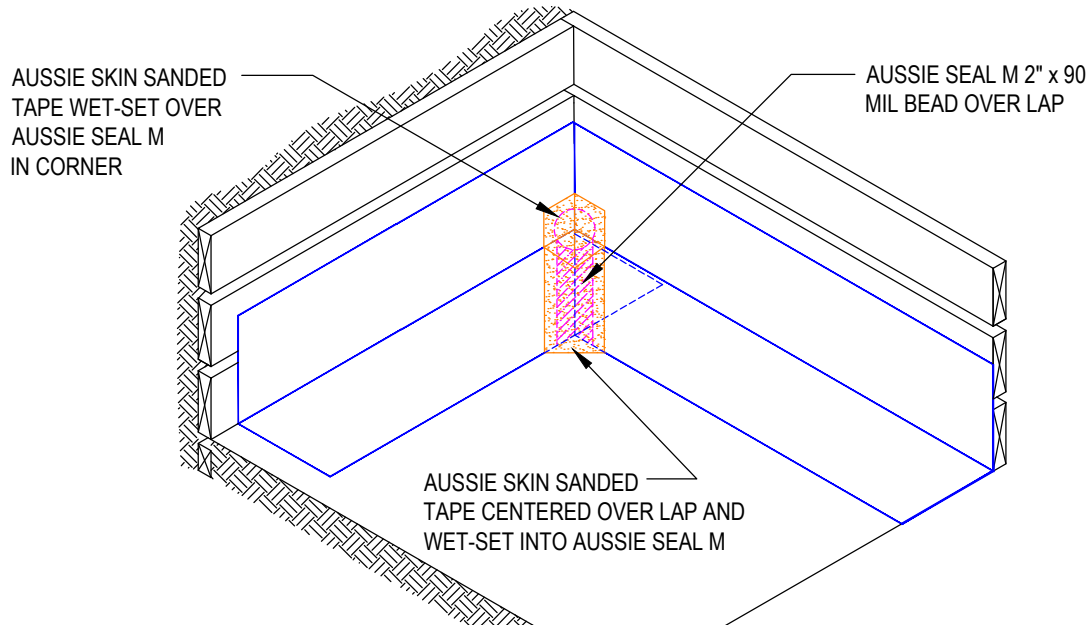
Aussie Skin 550G/560G



STEP 1 (SEE FULL INSTALLATION STEPS BELOW)



STEP 2



Installation Steps:

1. Install Aussie Skin corner sheet and relief cut at corner as show
2. Place a 2" wide tooled bead of Aussie Seal M under 45° cut and wet-set Aussie Skin lap
3. Place a 2" x 1/4" thick tooled bead of Aussie Seal M centered at corner
4. Wet-set a piece of Aussie Skin Sanded Tape over 2" sealant in corner (relief cut sanded tape as needed to fit in corner)
5. Place a 2" x 90 mil tooled bead of Aussie Seal M over lap
6. Wet-set a piece of Aussie Skin Sanded Tape centered over the lap & Aussie Seal M and roll into place
7. Follow standard factory and/or non-factory lapping details for installation of Aussie Skin horizontal and vertical field sheets