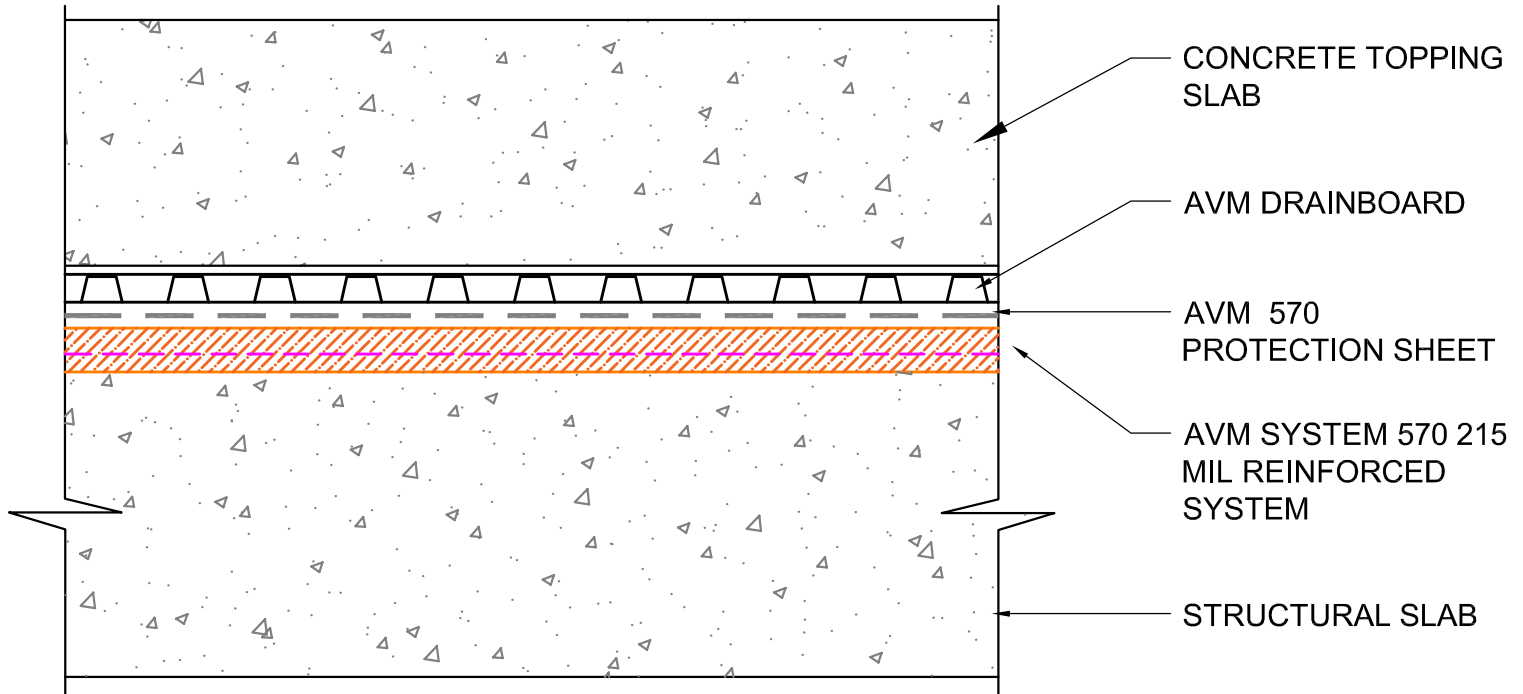


DETAIL #: AVM-0570-0001-C

AVM SYSTEM 570

## TYPICAL PLAZA

### Concrete Topping Slab over Structural Slab AVM Aussie Membrane 570 Hot Rubber



## USE AVM ADHESIVE 501 ON CONCRETE RECEIVING AVM SYSTEM 570

### NOTES:

1. Aussie Membrane 570 is a Hot Rubber(Hot-Applied Asphalt-Based Composition Membrane) for Between-Slabs, Planters, Roof-Gardens and similar type Waterproofing.
2. Typical membrane is 215 mils thick with fabric reinforcement. If specified differently, contact AVM for approval.
3. Contact AVM if no drain board or protection board is specified.
4. Remove/grind/repair as necessary any protrusions, sharp edges, etc that may puncture or damage the membrane.
5. Deck-to-Wall corners must be waterproofed as shown on AVM's Details.
6. Substrates must be sloped to drains and/or edges before membrane installation. (Min 1/4" per foot) Substrates must have sufficient drains and proper drainage systems to effectively evacuate excessive water.
7. If water is to drain over the edge, then edge metals MUST have sufficient weep holes (at least every 6") and must be strong enough (thick enough) to act as a concrete form.
8. Many edge details are possible. All must allow for proper water evacuation. (None should trap water) Consult AVM for details.
9. Drainage board for topping Slabs up to 4" thick for pedestrian applications: Use AVM Drain Board 6000.
10. Drainage board for topping slabs over 4" thick or for vehicular applications: Use AVM Drain Board 9000.

AVM Industries, Inc.  
8245 Remmet Ave, Canoga Park, CA 91304

Quality Waterproofing Products

888.414.1041 818.888.0050  
www.avmindustries.com

FILE NAME: **0570-0001-C-Concrete-Topping-Slab-over-Structural-Slab**

Protected by Copyright - AVM Industries, Inc.

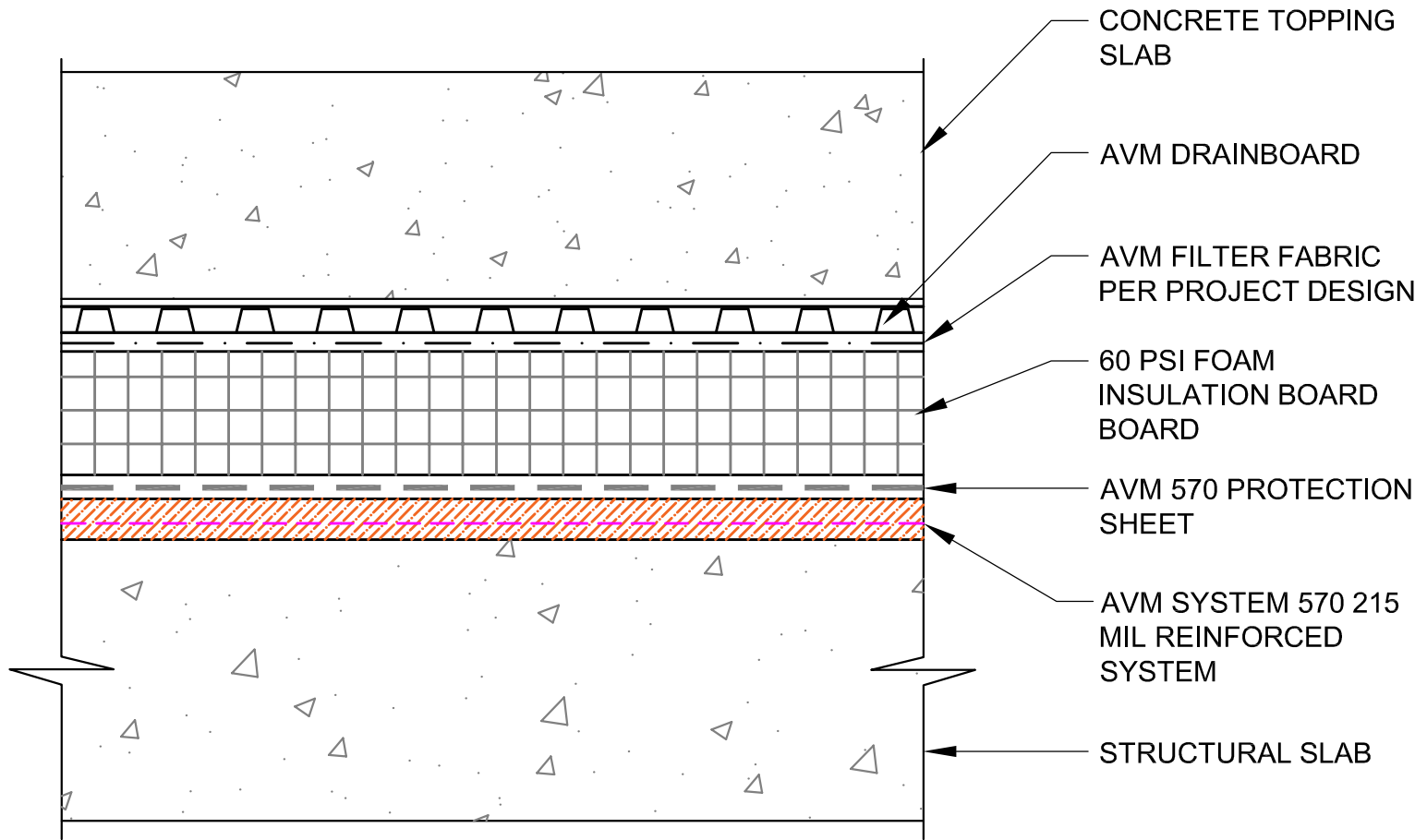
Revision Date 1/23/2019

DETAIL #: AVM-0570-0051-C

AVM SYSTEM 570

## TYPICAL PLAZA

### Insulated Concrete Topping Layer over Structural Slab AVM Aussie Membrane 570 Hot Rubber



## USE AVM ADHESIVE 501 ON CONCRETE RECEIVING AVM SYSTEM 570

#### NOTES:

1. Aussie Membrane 570 is a Hot Rubber(Hot-Applied Asphalt-Based Composition Membrane) for Between-Slabs, Planters, Roof-Gardens and similar type Waterproofing.
2. Typical membrane is 215 mils thick with fabric reinforcement. If specified differently, contact AVM for approval.
3. Contact AVM if no drain board or protection board is specified.
4. Remove/grind/repair as necessary any protrusions, sharp edges, etc that may puncture or damage the membrane.
5. Deck-to-Wall corners must be waterproofed as shown on AVM's Details.
6. Substrates must be sloped to drains and/or edges before membrane installation. (Min 1/4" per foot) Substrates must have sufficient drains and proper drainage systems to effectively evacuate excessive water.
7. If water is to drain over the edge, then edge metals MUST have sufficient weep holes (at least every 6") and must be strong enough (thick enough) to act as a concrete form.
8. Many edge details are possible. All must allow for proper water evacuation. (None should trap water) Consult AVM for details.
9. Drainage board for topping Slabs up to 4" thick for pedestrian applications: Use AVM Drain Board 6000.
10. Drainage board for topping slabs over 4" thick or for vehicular applications: Use AVM Drain Board 9000.

AVM Industries, Inc.  
8245 Remmet Ave, Canoga Park, CA 91304

Quality Waterproofing Products

888.414.1041 818.888.0050  
www.avmindustries.com

FILE NAME: **0570-0051-C-Insulated-Concrete-Topping-Layer-over-Structural-Slab**

Protected by Copyright - AVM Industries, Inc.

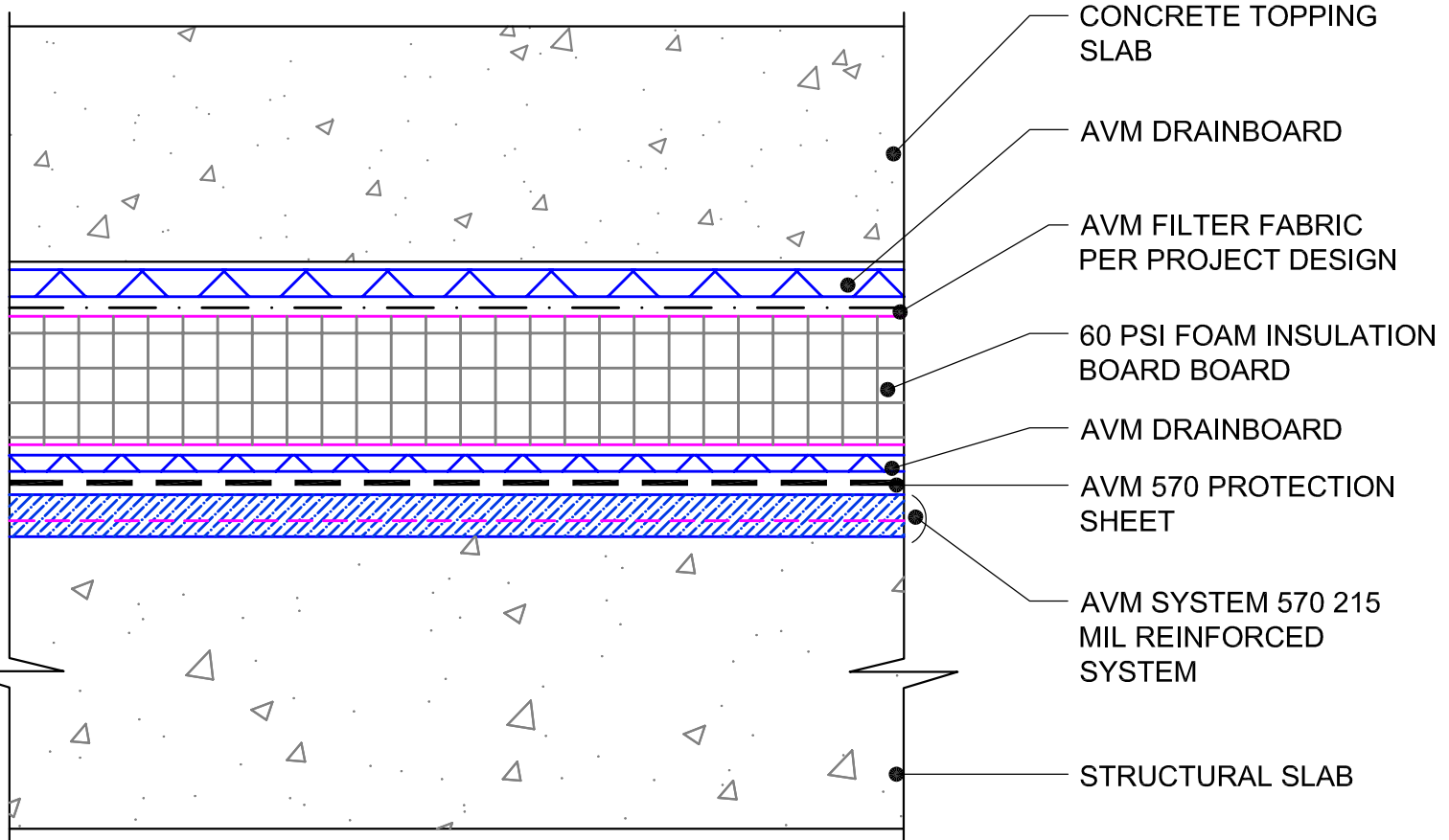
Revision Date 1/23/2019

DETAIL #: AVM-0570-0061-C

AVM SYSTEM 570

## TYPICAL PLAZA

### Insulated Concrete Topping Layer with Double Drain Board over Structural Slab AVM Aussie Membrane 570 Hot Rubber



## USE AVM ADHESIVE 501 ON CONCRETE RECEIVING AVM SYSTEM 570

### NOTES:

1. Aussie Membrane 570 is a Hot Rubber(Hot-Applied Asphalt-Based Composition Membrane) for Between-Slabs, Planters, Roof-Gardens and similar type Waterproofing.
2. Typical membrane is 215 mils thick with fabric reinforcement. If specified differently, contact AVM for approval.
3. Contact AVM if no drain board or protection board is specified.
4. Remove/grind/repair as necessary any protrusions, sharp edges, etc that may puncture or damage the membrane.
5. Deck-to-Wall corners must be waterproofed as shown on AVM's Details.
6. Substrates must be sloped to drains and/or edges before membrane installation. (Min 1/4" per foot) Substrates must have sufficient drains and proper drainage systems to effectively evacuate excessive water.
7. If water is to drain over the edge, then edge metals MUST have sufficient weep holes (at least every 6") and must be strong enough (thick enough) to act as a concrete form.
8. Many edge details are possible. All must allow for proper water evacuation. (None should trap water) Consult AVM for details.
9. Drainage board for topping Slabs up to 4" thick for pedestrian applications: Use AVM Drain Board 6000.
10. Drainage board for topping slabs over 4" thick or for vehicular applications: Use AVM Drain Board 9000.

AVM Industries, Inc.  
8245 Remmet Ave, Canoga Park, CA 91304

Quality Waterproofing Products

888.414.1041 818.888.0050  
www.avmindustries.com

FILE NAME: **0570-0061-C-Insulated-Concrete-Topping-Layer-with-Double-Drain-Board-over-Structural-Slab**

Protected by Copyright - AVM Industries, Inc.

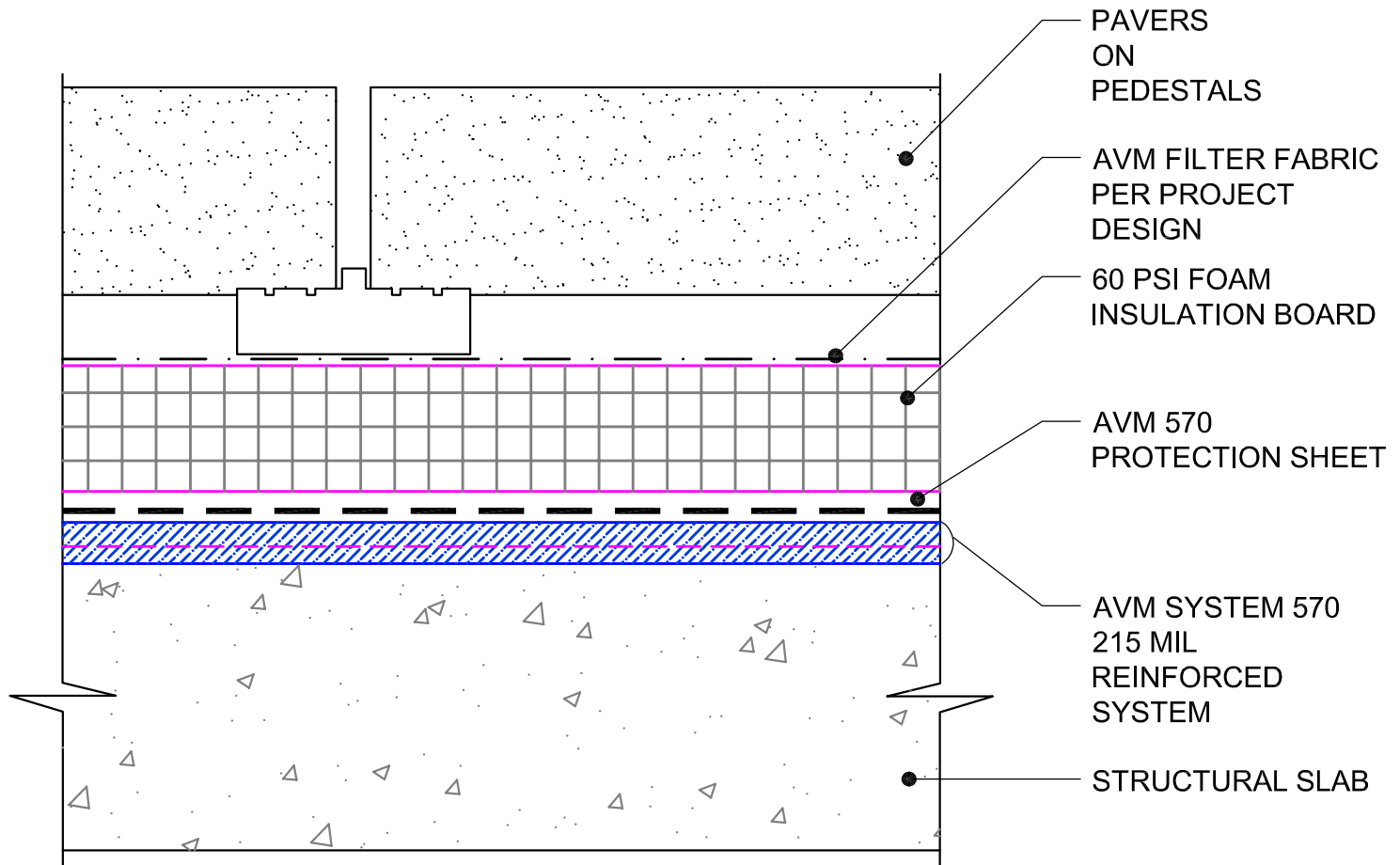
Revision Date 1/23/2019

DETAIL #: AVM-0570-0210-C

AVM SYSTEM 570

## PLAZA DECK

Pavers on Pedestals without  
Drainboard over Structural Slab  
AVM Aussie Membrane 570  
Hot Rubber



**USE AVM ADHESIVE 501 ON CONCRETE RECEIVING AVM SYSTEM 570**

### NOTES:

1. Aussie Membrane 570 is a Hot Rubber(Hot-Applied Asphalt-Based Composition Membrane) for Between-Slabs, Planters, Roof-Gardens and similar type Waterproofing.
2. Typical membrane is 215 mils thick with fabric reinforcement. If specified differently, contact AVM for approval.
3. Contact AVM if no drain board or protection board is specified.
4. Remove/grind/repair as necessary any protrusions, sharp edges, etc that may puncture or damage the membrane.
5. Deck-to-Wall corners must be waterproofed as shown on AVM's Details.
6. Substrates must be sloped to drains and/or edges before membrane installation. (Min 1/4" per foot) Substrates must have sufficient drains and proper drainage systems to effectively evacuate excessive water.
7. If water is to drain over the edge, then edge metals MUST have sufficient weep holes (at least every 6") and must be strong enough (thick enough) to act as a concrete form.
8. Many edge details are possible. All must allow for proper water evacuation. (None should trap water) Consult AVM for details.

AVM Industries, Inc.  
8245 Remmet Ave, Canoga Park, CA 91304

Quality Waterproofing Products

888.414.1041 818.888.0050  
www.avmindustries.com

**FILE NAME: 0570-0210-C-Pavers-on-Pedestals-without-Drainboard-over-Structural-Slab**

Protected by Copyright - AVM Industries, Inc.

Revision Date 1/23/2019

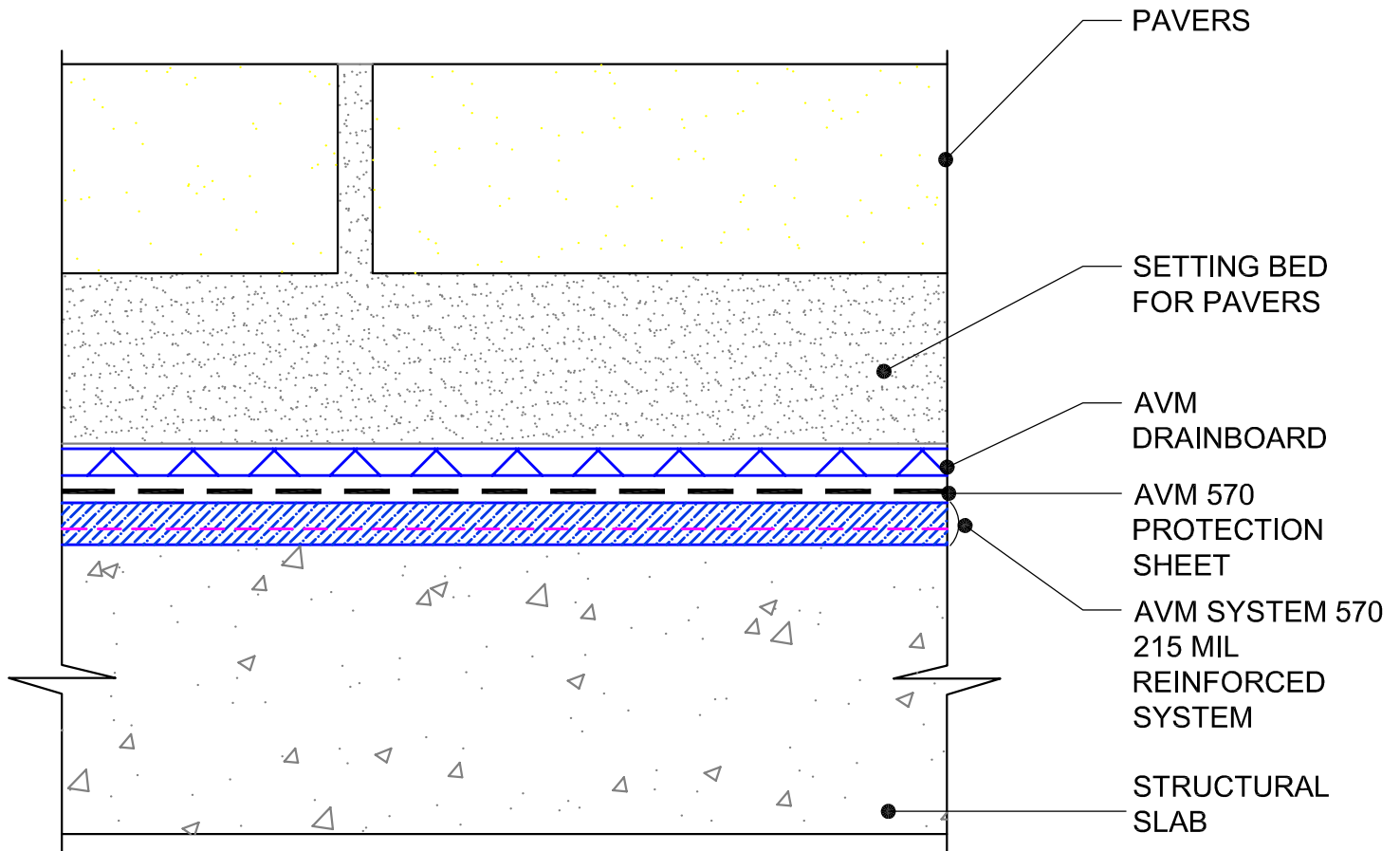


DETAIL #: AVM-0570-0230-C

AVM SYSTEM 570

PLAZA DECK

Pavers in Setting Bed  
over Structural Slab  
AVM Aussie Membrane 570  
Hot Rubber



**USE AVM ADHESIVE 501 ON CONCRETE RECEIVING AVM SYSTEM 570**

**NOTES:**

1. Aussie Membrane 570 is a Hot Rubber(Hot-Applied Asphalt-Based Composition Membrane) for Between-Slabs, Planters, Roof-Gardens and similar type Waterproofing.
2. Typical membrane is 215 mils thick with fabric reinforcement. If specified differently, contact AVM for approval.
3. Contact AVM if no drain board or protection board is specified.
4. Remove/grind/repair as necessary any protrusions, sharp edges, etc that may puncture or damage the membrane.
5. Deck-to-Wall corners must be waterproofed as shown on AVM's Details.
6. Substrates must be sloped to drains and/or edges before membrane installation. (Min 1/4" per foot) Substrates must have sufficient drains and proper drainage systems to effectively evacuate excessive water.
7. If water is to drain over the edge, then edge metals MUST have sufficient weep holes (at least every 6") and must be strong enough (thick enough) to act as a concrete form.
8. Many edge details are possible. All must allow for proper water evacuation. (None should trap water) Consult AVM for details.
9. Drainage board for topping Slabs up to 4" thick for pedestrian applications: Use AVM Drain Board 6000.
10. Drainage board for topping slabs over 4" thick or for vehicular applications: Use AVM Drain Board 9000.

AVM Industries, Inc.  
8245 Remmet Ave, Canoga Park, CA 91304

Quality Waterproofing Products

888.414.1041 818.888.0050  
www.avmindustries.com

**FILE NAME: 0570-0230-C-Pavers-in-Setting-Bed-over-Structural-Slab**

Protected by Copyright - AVM Industries, Inc.

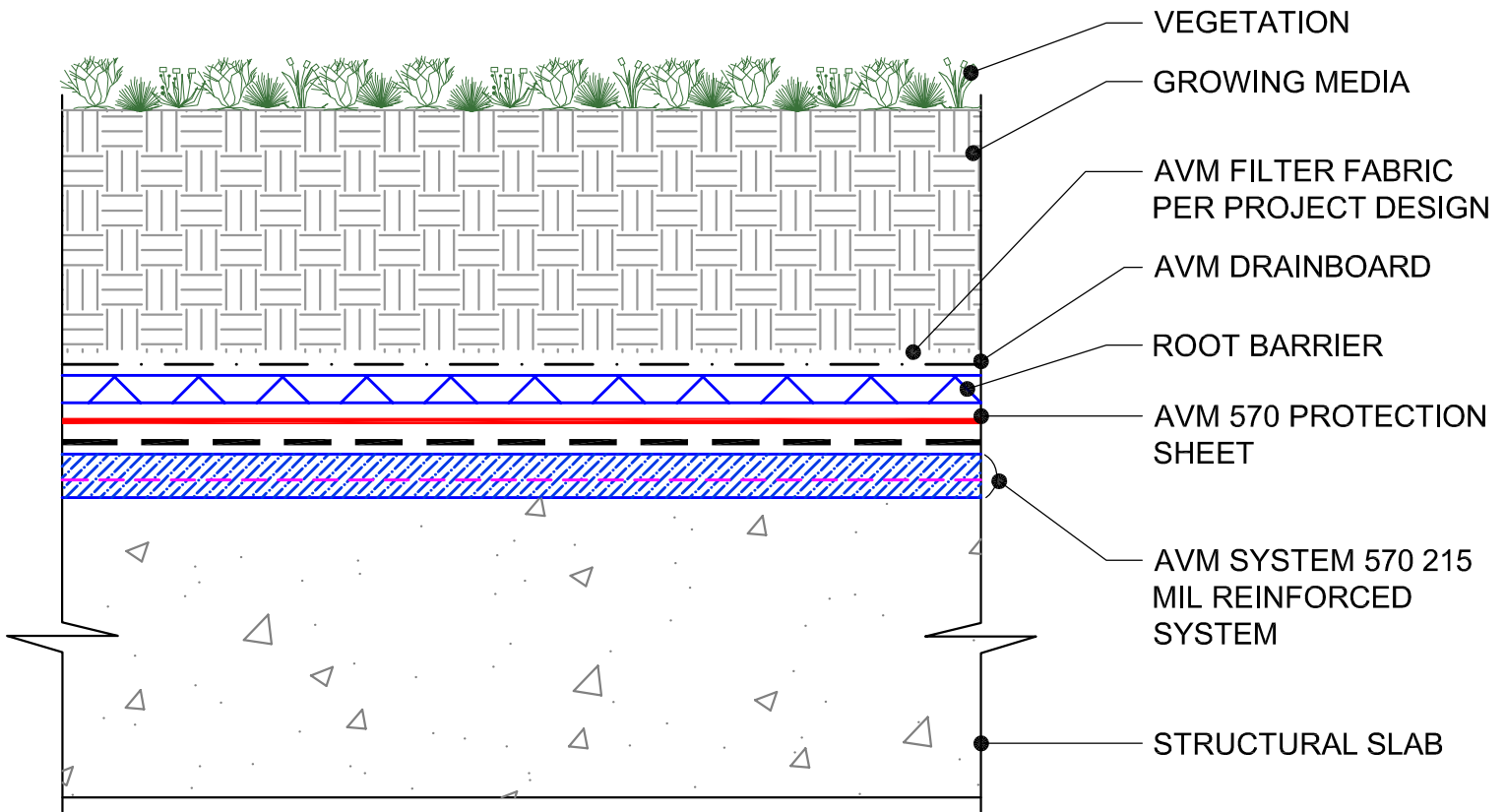
Revision Date 1/23/2019

DETAIL #: AVM-0570-0401-C

AVM SYSTEM 570

## TYPICAL PLAZA

### Landscaped Assembly over Structural Slab AVM Aussie Membrane 570 Hot Rubber



## USE AVM ADHESIVE 501 ON CONCRETE RECEIVING AVM SYSTEM 570

### NOTES:

1. Aussie Membrane 570 is a Hot Rubber(Hot-Applied Asphalt-Based Composition Membrane) for Between-Slabs, Planters, Roof-Gardens and similar type Waterproofing.
2. Typical membrane is 215 mils thick with fabric reinforcement. If specified differently, contact AVM for approval.
3. Contact AVM if no drain board or protection board is specified.
4. Remove/grind/repair as necessary any protrusions, sharp edges, etc that may puncture or damage the membrane.
5. Deck-to-Wall corners must be waterproofed as shown on AVM's Details.
6. Substrates must be sloped to drains and/or edges before membrane installation. (Min 1/4" per foot) Substrates must have sufficient drains and proper drainage systems to effectively evacuate excessive water.

AVM Industries, Inc.  
8245 Remmet Ave, Canoga Park, CA 91304

Quality Waterproofing Products

888.414.1041 818.888.0050  
www.avmindustries.com

FILE NAME: 0570-0401-C-Landscaped-Assembly-over-Structural-Slab

Protected by Copyright - AVM Industries, Inc.

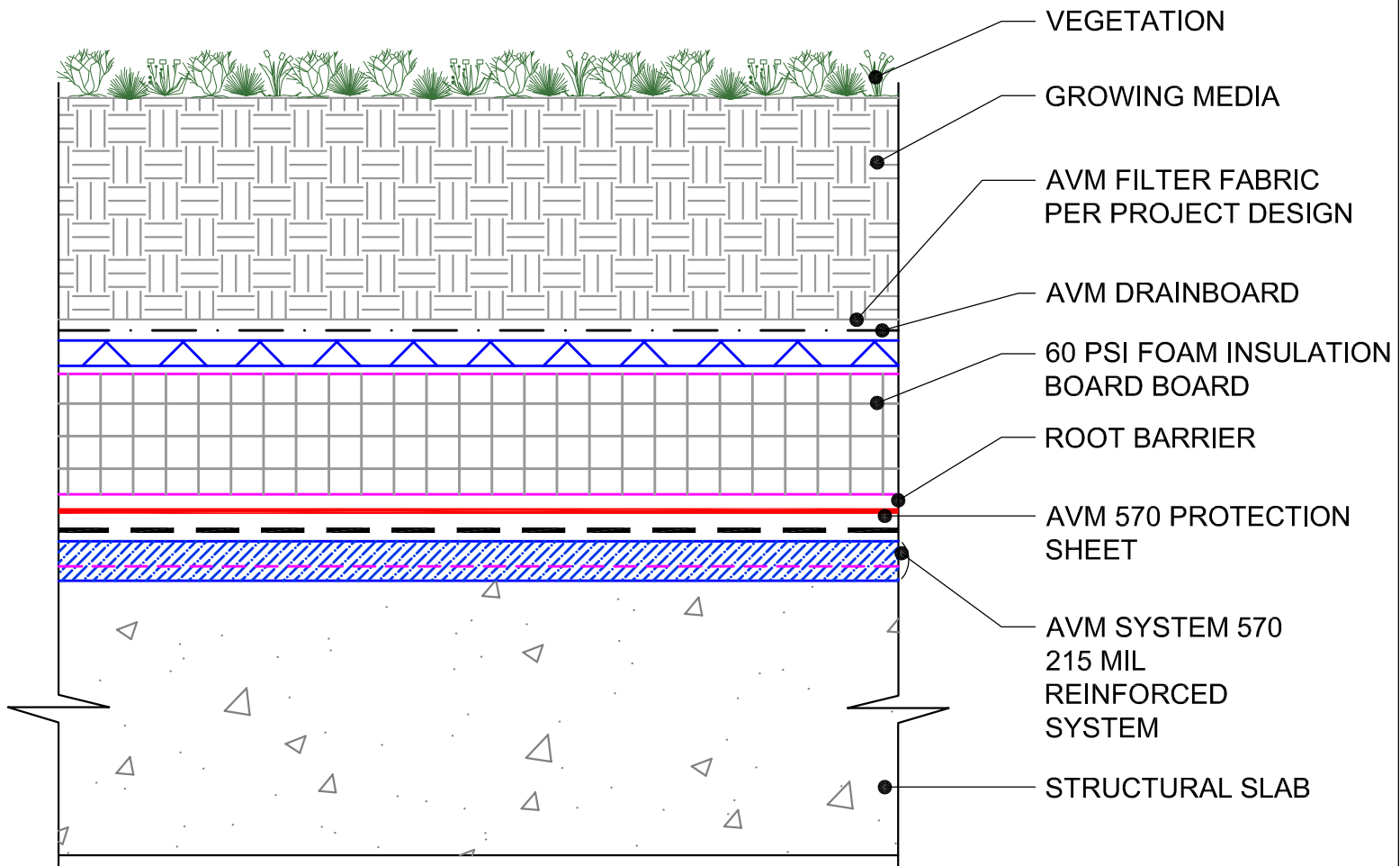
Revision Date 1/23/2019

DETAIL #: AVM-0570-0451-C

AVM SYSTEM 570

## TYPICAL PLAZA

### Insulated Landscaped Assembly over Structural Slab AVM Aussie Membrane 570 Hot Rubber



**USE AVM ADHESIVE 501 ON CONCRETE RECEIVING AVM SYSTEM 570**

#### NOTES:

1. Aussie Membrane 570 is a Hot Rubber(Hot-Applied Asphalt-Based Composition Membrane) for Between-Slabs, Planters, Roof-Gardens and similar type Waterproofing.
2. Typical membrane is 215 mils thick with fabric reinforcement. If specified differently, contact AVM for approval.
3. Contact AVM if no drain board or protection board is specified.
4. Remove/grind/repair as necessary any protrusions, sharp edges, etc that may puncture or damage the membrane.
5. Deck-to-Wall corners must be waterproofed as shown on AVM's Details.
6. Substrates must be sloped to drains and/or edges before membrane installation. (Min 1/4" per foot) Substrates must have sufficient drains and proper drainage systems to effectively evacuate excessive water.

AVM Industries, Inc.  
8245 Remmet Ave, Canoga Park, CA 91304

Quality Waterproofing Products

888.414.1041 818.888.0050  
www.avmindustries.com

**FILE NAME: 0570-0451-C-Insulated-Landscaped-Assembly-over-Structural-Slab**

Protected by Copyright - AVM Industries, Inc.

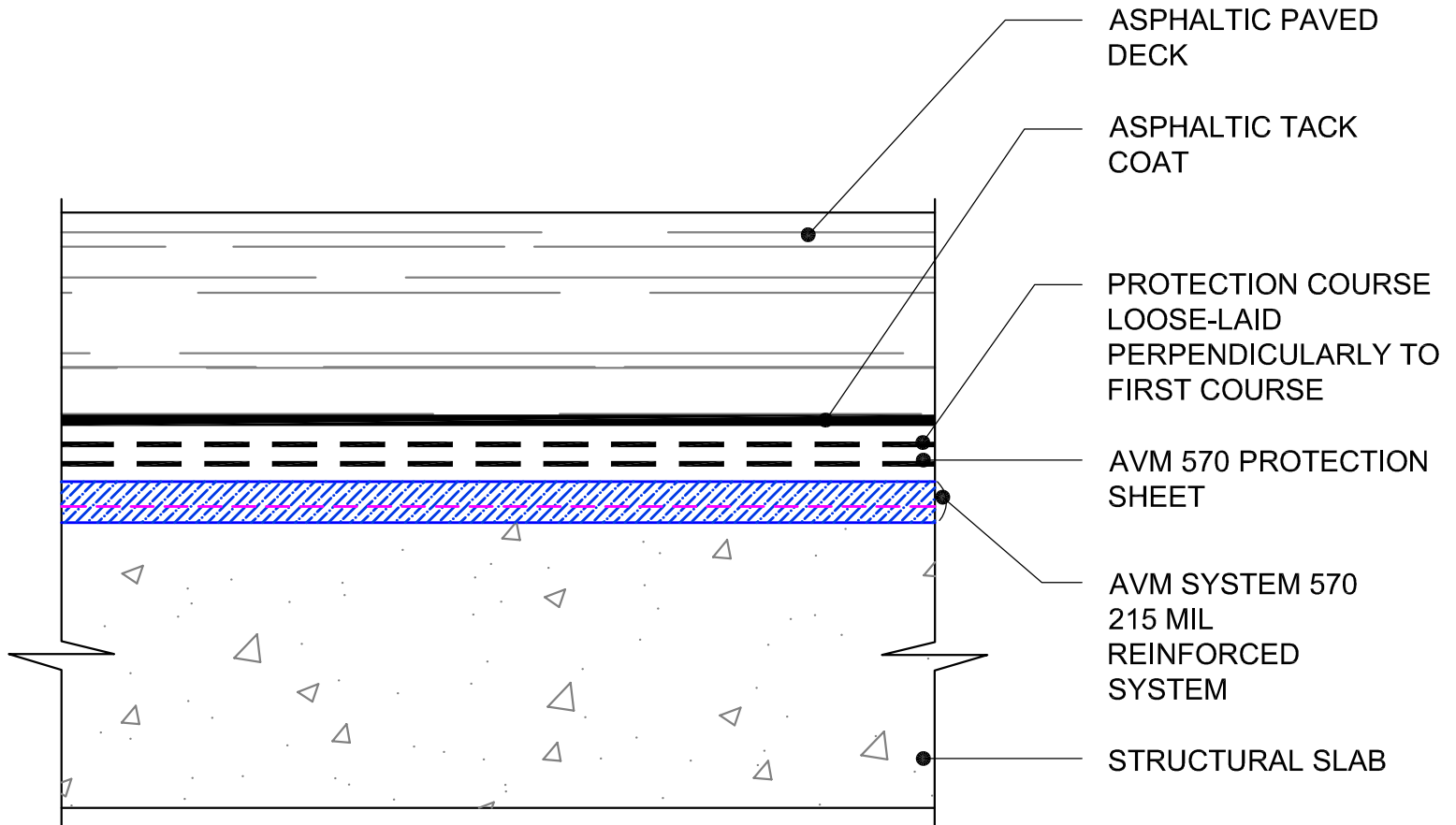
Revision Date 1/23/2019

DETAIL #: AVM-0570-0601-C

AVM SYSTEM 570

## TYPICAL PLAZA

Asphalt Paved Deck  
over Structural Slab  
AVM Aussie Membrane 570  
Hot Rubber



**USE AVM ADHESIVE 501 ON CONCRETE RECEIVING AVM SYSTEM 570**

### NOTES:

1. Aussie Membrane 570 is a Hot Rubber(Hot-Applied Asphalt-Based Composition Membrane) for Between-Slabs, Planters, Roof-Gardens and similar type Waterproofing.
2. Typical membrane is 215 mils thick with fabric reinforcement. If specified differently, contact AVM for approval.
3. Contact AVM if no drain board or protection board is specified.
4. Remove/grind/repair as necessary any protrusions, sharp edges, etc that may puncture or damage the membrane.
5. Deck-to-Wall corners must be waterproofed as shown on AVM's Details.
6. Substrates must be sloped to drains and/or edges before membrane installation. (Min 1/4" per foot) Substrates must have sufficient drains and proper drainage systems to effectively evacuate excessive water.

AVM Industries, Inc.  
8245 Remmet Ave, Canoga Park, CA 91304

Quality Waterproofing Products

888.414.1041 818.888.0050  
www.avmindustries.com

FILE NAME: **0570-0601-C-Asphalt-Paved-Deck-over-Structural-Slab**

Protected by Copyright - AVM Industries, Inc.

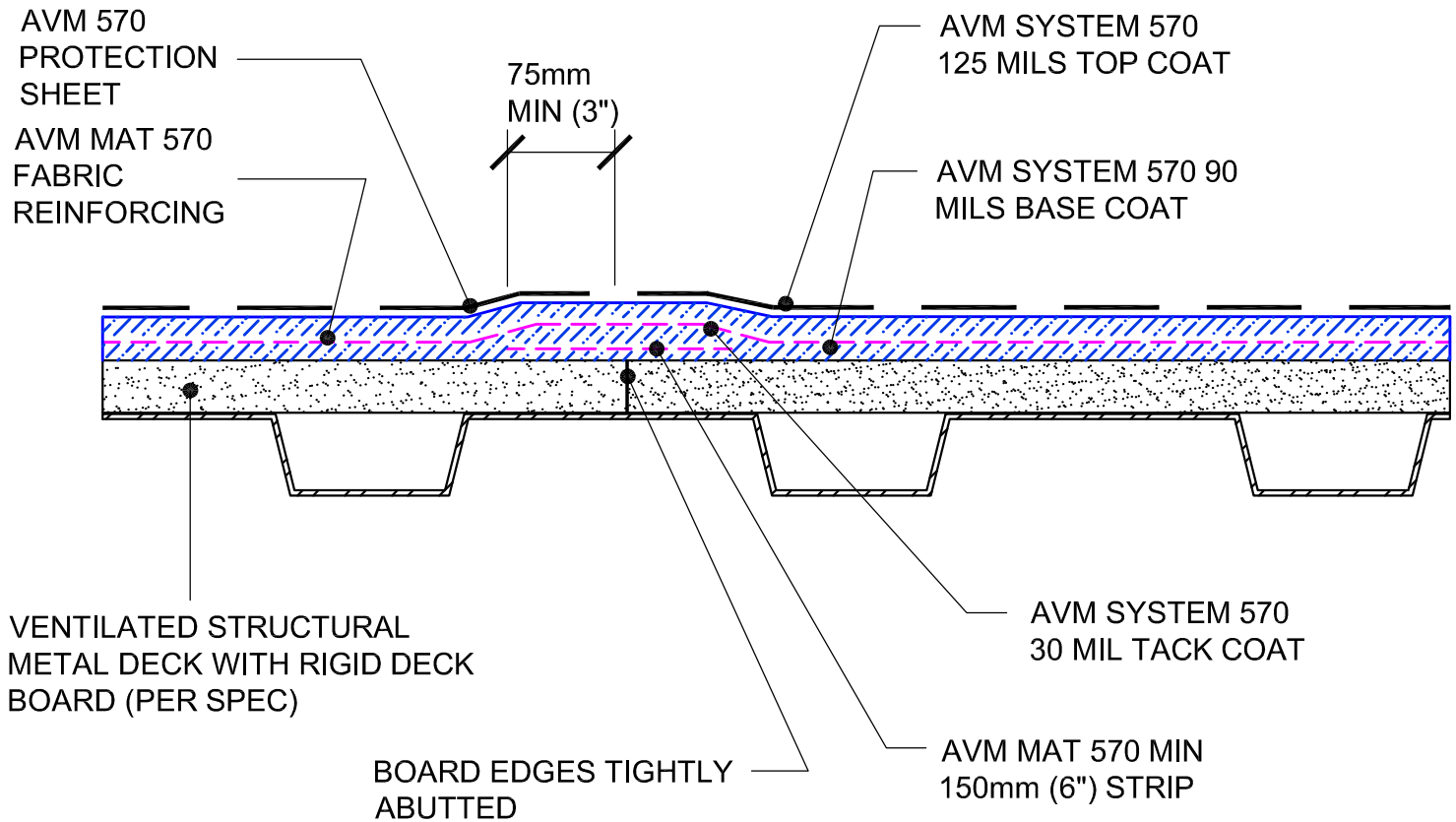
Revision Date 1/23/2019

DETAIL #: AVM-0570-2001-M

AVM SYSTEM 570

## METAL DECK

### Reinforced Hot Rubber over Metal Deck with Deck Board Neoprene Flashing at Joint Detail AVM Aussie Membrane 570 Hot Rubber



#### NOTES:

1. Aussie Membrane 570 is a Hot Rubber(Hot-Applied Asphalt-Based Composition Membrane) for Between-Slabs, Planters, Roof-Gardens and similar type Waterproofing.
2. Typical membrane is 215 mils thick with fabric reinforcement. If specified differently, contact AVM for approval.
3. Contact AVM if no drain board or protection board is specified.
4. Remove/grind/repair as necessary any protrusions, sharp edges, etc that may puncture or damage the membrane.
5. Deck-to-Wall corners must be waterproofed as shown on AVM's Details.
6. Substrates must be sloped to drains and/or edges before membrane installation. (Min 1/4" per foot) Substrates must have sufficient drains and proper drainage systems to effectively evacuate excessive water.
7. Drainage board for topping Slabs up to 4" thick for pedestrian applications: Use AVM Drain Board 6000.
8. Drainage board for topping slabs over 4" thick or for vehicular applications:Use AVM Drain Board 9000.
9. Structural metal decks must be ventilated.

AVM Industries, Inc.  
8245 Remmet Ave, Canoga Park, CA 91304

Quality Waterproofing Products

888.414.1041 818.888.0050  
www.avmindustries.com

FILE NAME: **0570-2001-M-Reinforced-Hot-Rubber-over-Metal-Deck-With-Deck-Board-Neoprene-Flashing-at-Joint-Detail**

Protected by Copyright - AVM Industries, Inc.

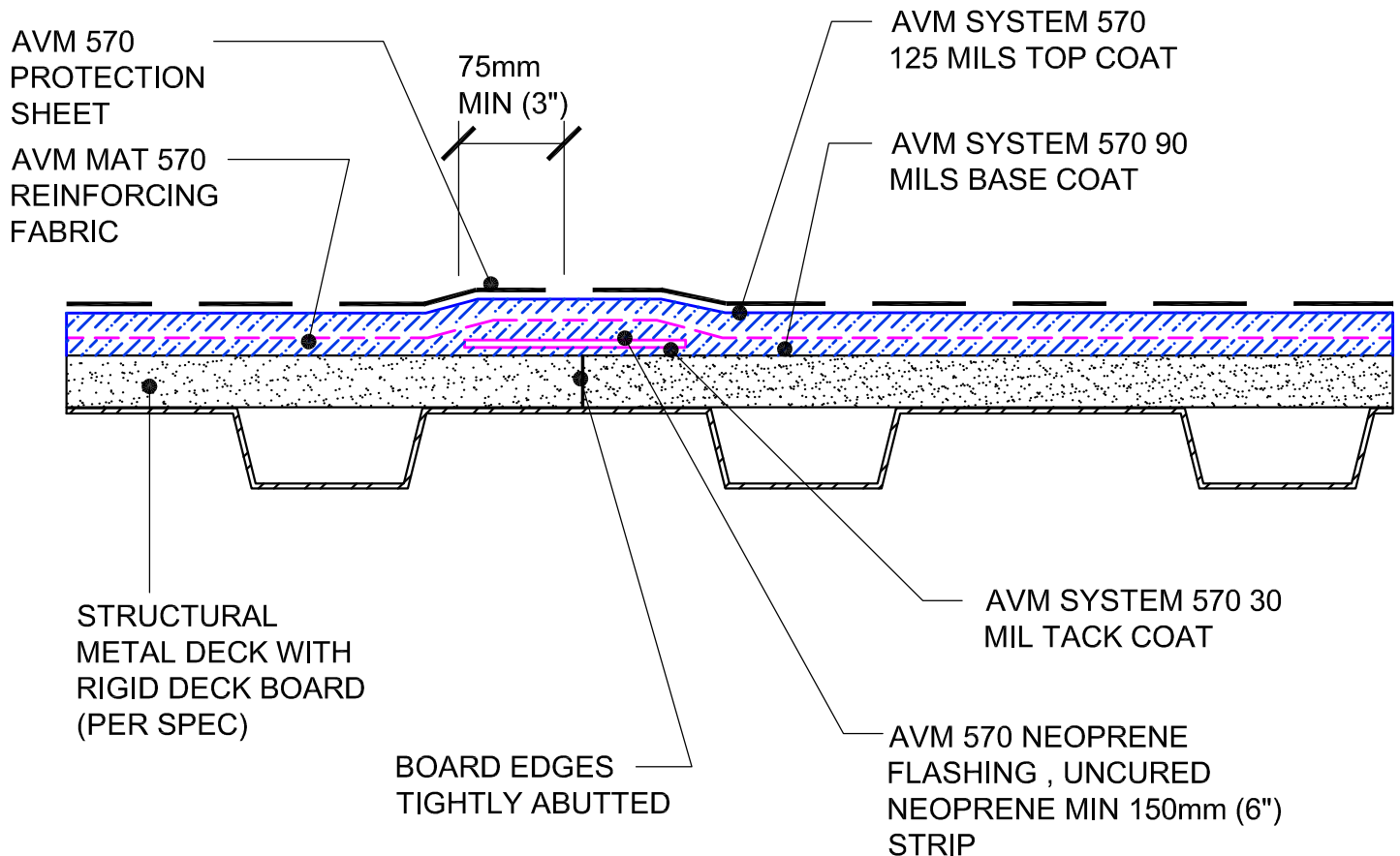
Revision Date 1/23/2019

DETAIL #: AVM-0570-2021-M

AVM SYSTEM 570

## METAL DECK

### Reinforced Hot Rubber at Cold Joints AVM Aussie Membrane 570 Hot Rubber



#### NOTES:

1. Aussie Membrane 570 is a Hot Rubber(Hot-Applied Asphalt-Based Composition Membrane) for Between-Slabs, Planters, Roof-Gardens and similar type Waterproofing.
2. Typical membrane is 215 mils thick with fabric reinforcement. If specified differently, contact AVM for approval.
3. Contact AVM if no drain board or protection board is specified.
4. Remove/grind/repair as necessary any protrusions, sharp edges, etc that may puncture or damage the membrane.
5. Deck-to-Wall corners must be waterproofed as shown on AVM's Details.
6. Substrates must be sloped to drains and/or edges before membrane installation. (Min 1/4" per foot) Substrates must have sufficient drains and proper drainage systems to effectively evacuate excessive water.
7. Drainage board for topping Slabs up to 4" thick for pedestrian applications: Use AVM Drain Board 6000.
8. Drainage board for topping slabs over 4" thick or for vehicular applications: Use AVM Drain Board 9000.
9. Structural metal decks must be ventilated.

AVM Industries, Inc.  
8245 Remmet Ave, Canoga Park, CA 91304

Quality Waterproofing Products

888.414.1041 818.888.0050  
www.avmindustries.com

FILE NAME: **0570-2021-M-Reinforced-Hot-Rubber-at-Cold-Joints**

Protected by Copyright - AVM Industries, Inc.

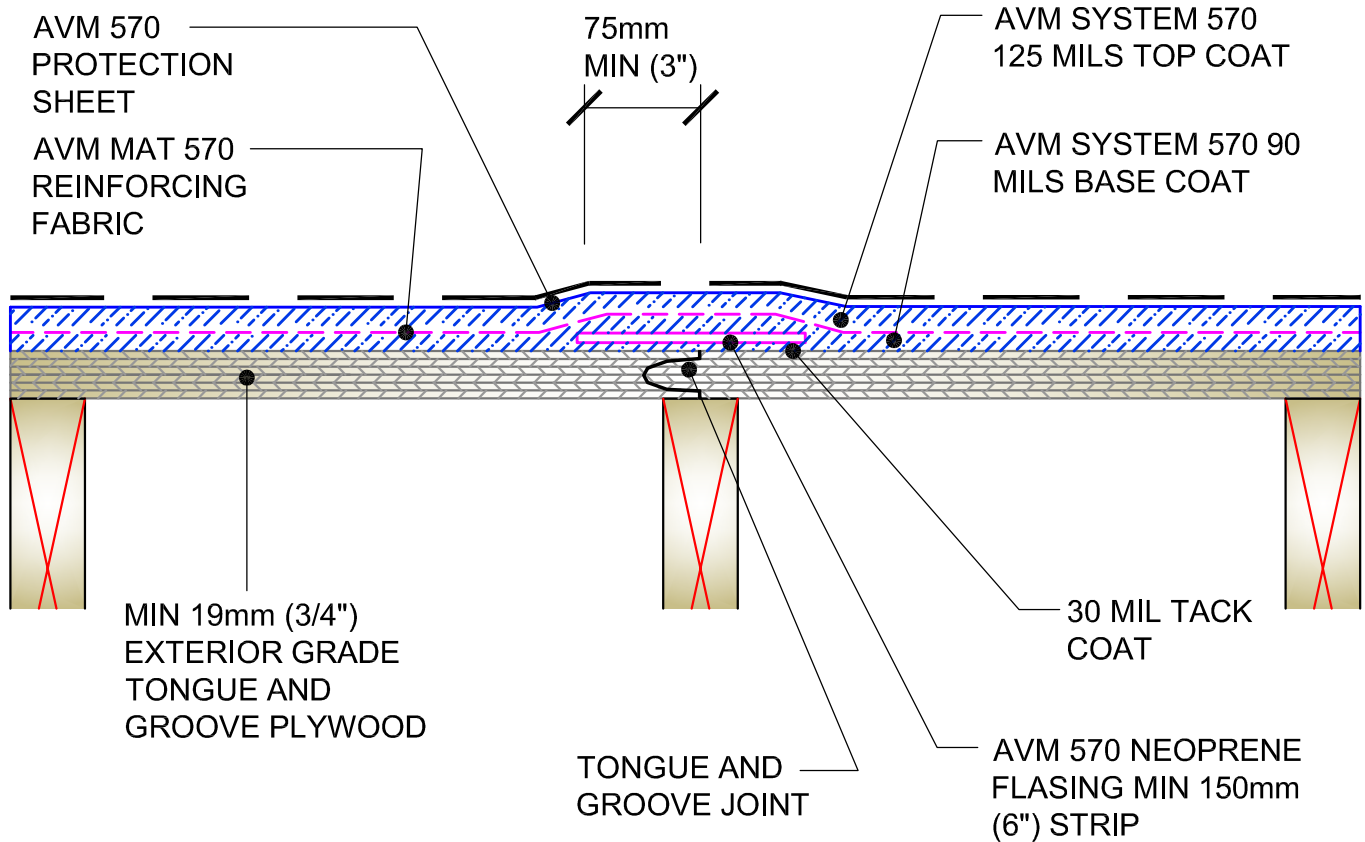
Revision Date 1/23/2019

DETAIL #: AVM-0570-2501-W

AVM SYSTEM 570

## PLYWOOD DECK

### Reinforced Hot Rubber over Tongue and Groove Plywood Neoprene Flushing at Joint Details AVM Aussie Membrane 570 Hot Rubber



#### NOTES:

1. Aussie Membrane 570 is a Hot Rubber(Hot-Applied Asphalt-Based Composition Membrane) for Between-Slabs, Planters, Roof-Gardens and similar type Waterproofing.
2. Typical membrane is 215 mils thick with fabric reinforcement. If specified differently, contact AVM for approval.
3. Contact AVM if no drain board or protection board is specified.
4. Remove/grind/repair as necessary any protrusions, sharp edges, etc that may puncture or damage the membrane.
5. Deck-to-Wall corners must be waterproofed as shown on AVM's Details.
6. Substrates must be sloped to drains and/or edges before membrane installation. (Min 1/4" per foot) Substrates must have sufficient drains and proper drainage systems to effectively evacuate excessive water.
7. If water is to drain over the edge, then edge metals MUST have sufficient weep holes (at least every 6") and must be strong enough (thick enough) to act as a concrete form.
8. Many edge details are possible. All must allow for proper water evacuation. (None should trap water) Consult AVM for details.
9. Make sure all nails are flush with the plywood surface or slightly sunken in below it. (Nails protruding above the plywood surface may puncture the membrane)
10. Reinforce the Aussie Membrane 570 at all plywood joints, cracks, metal transitions, penetrations, drains, etc.

AVM Industries, Inc.  
8245 Remmet Ave, Canoga Park, CA 91304

Quality Waterproofing Products

888.414.1041 818.888.0050  
www.avmindustries.com

FILE NAME: **0570-2501-W-Reinforced-Hot-Rubber-over-Tongue-and-Groove-Plywood-Neoprene-Flushing-at-Joint-Details**

Protected by Copyright - AVM Industries, Inc.

Revision Date 1/23/2019

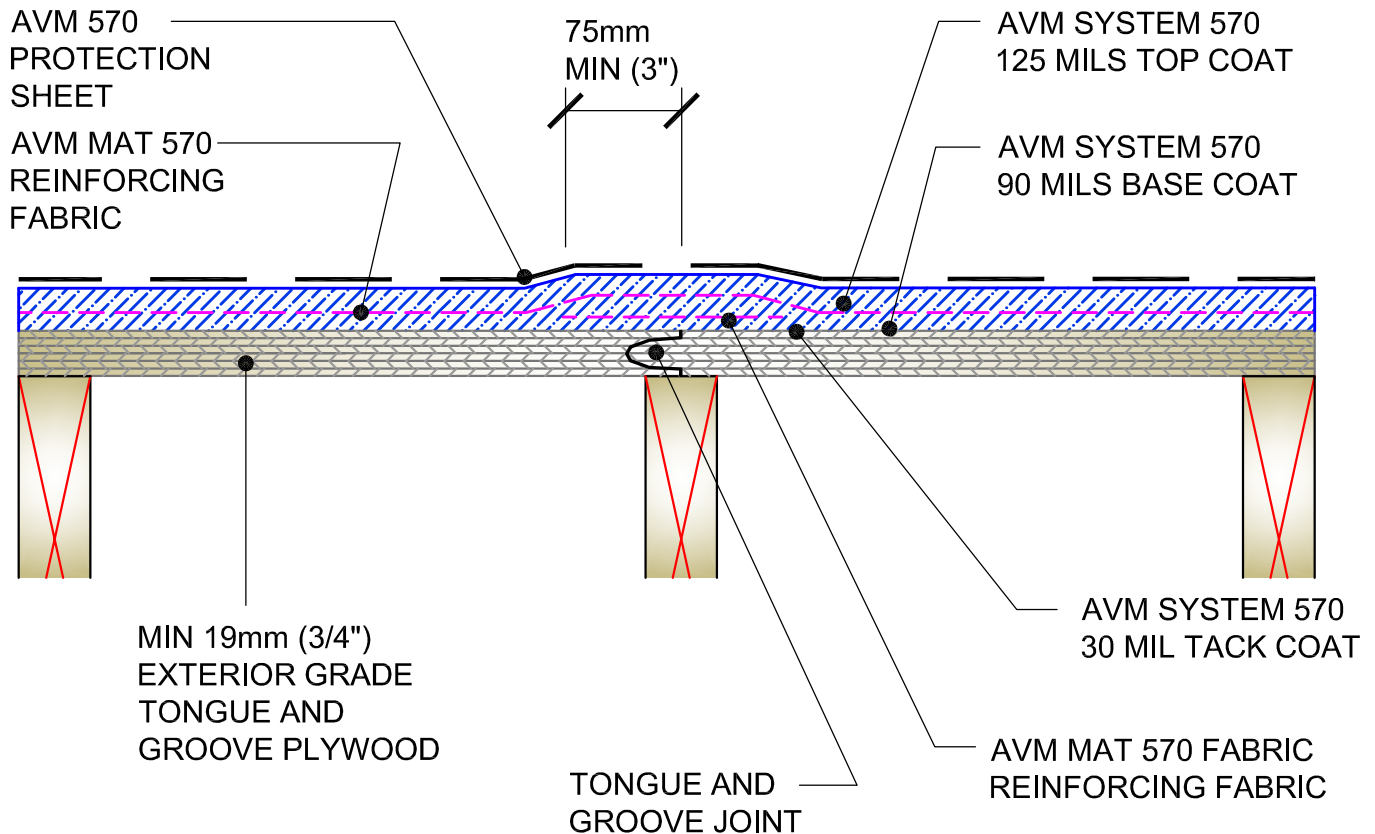


DETAIL #: AVM-0570-2521-W

AVM SYSTEM 570

## PLYWOOD DECK

### Reinforced Hot Rubber over Tongue and Groove Plywood Fabric Reinforcement at Joint Detail AVM Aussie Membrane 570 Hot Rubber



#### NOTES:

1. Aussie Membrane 570 is a Hot Rubber(Hot-Applied Asphalt-Based Composition Membrane) for Between-Slabs, Planters, Roof-Gardens and similar type Waterproofing.
2. Typical membrane is 215 mils thick with fabric reinforcement. If specified differently, contact AVM for approval.
3. Contact AVM if no drain board or protection board is specified.
4. Remove/grind/repair as necessary any protrusions, sharp edges, etc that may puncture or damage the membrane.
5. Deck-to-Wall corners must be waterproofed as shown on AVM's Details.
6. Substrates must be sloped to drains and/or edges before membrane installation. (Min 1/4" per foot) Substrates must have sufficient drains and proper drainage systems to effectively evacuate excessive water.
7. If water is to drain over the edge, then edge metals MUST have sufficient weep holes (at least every 6") and must be strong enough (thick enough) to act as a concrete form.
8. Many edge details are possible. All must allow for proper water evacuation. (None should trap water) Consult AVM for details.
9. Make sure all nails are flush with the plywood surface or slightly sunken in below it. (Nails protruding above the plywood surface may puncture the membrane)
10. Reinforce the Aussie Membrane 570 at all plywood joints, cracks, metal transitions, penetrations, drains, etc.

AVM Industries, Inc.  
8245 Remmet Ave, Canoga Park, CA 91304

Quality Waterproofing Products

888.414.1041 818.888.0050  
www.avmindustries.com

FILE NAME: 0570-2521-W/Reinforced-Hot-Rubber-over-Tongue-and-Groove-Plywood-Fabric-Reinforcement-at-Joint-Detail

Protected by Copyright - AVM Industries, Inc.

Revision Date 1/23/2019

DETAIL #: AVM-0570-4001

AVM SYSTEM 570

PLAZA DECK

Deck to Wall Inside Corner Detail  
AVM Aussie Membrane 570  
Hot Rubber



AVM SYSTEM  
570 30 MIL  
TACK COAT

WALL

AVM 570  
NEOPRENE  
FLASHING

PLAZA DECK

**STEP 1**

APPLY TACK COAT  
AND INSTALL FIRST  
LAYER OF FLASHING  
AS SHOWN

AVM 570  
NEOPRENE  
FLASHING

WALL

WALL

SETTING BED  
FOR PAVERS

AVM SYSTEM  
570 30 MIL  
TACK COAT

PLAZA DECK

**STEP 2**

APPLY ANOTHER TACK  
COAT AND INSTALL  
SECOND LAYER OF  
FLASHING AS SHOWN

PLAZA DECK

**STEP 3**

COMPLETELY COAT NEOPRENE FLASHING WITH AVM SYSTEM 570  
IMMEDIATELY AFTER INSTALLATION

AVM Industries, Inc.  
8245 Remmet Ave, Canoga Park, CA 91304

Quality Waterproofing Products

888.414.1041 818.888.0050  
www.avmindustries.com

FILE NAME: 0570-4001-Deck-to-Wall-Inside-Corner-Detail

Protected by Copyright - AVM Industries, Inc.

Revision Date 1/23/2019

DETAIL #: AVM-0570-4011

AVM SYSTEM 570

PLAZA DECK

Deck to Wall Outside Corner Detail  
AVM Aussie Membrane 570  
Hot Rubber



AVM SYSTEM 570 30 ML  
TACK COAT

WALL

PLAZA DECK

AVM 570  
NEOPRENE  
FLASHING

WALL

AVM 570 NEOPRENE  
FLASHING

STEP 1

APPLY ADHESIVE AND  
INSTALL FIRST LAYER OF  
FLASHING AS SHOWN

AVM SYSTEM  
570 30 ML TACK  
COAT

WALL

PLAZA DECK

STEP 2

APPLY ANOTHER TACK  
COAT AND INSTALL  
SECOND LAYER OF  
FLASHING AS SHOWN

STEP 3

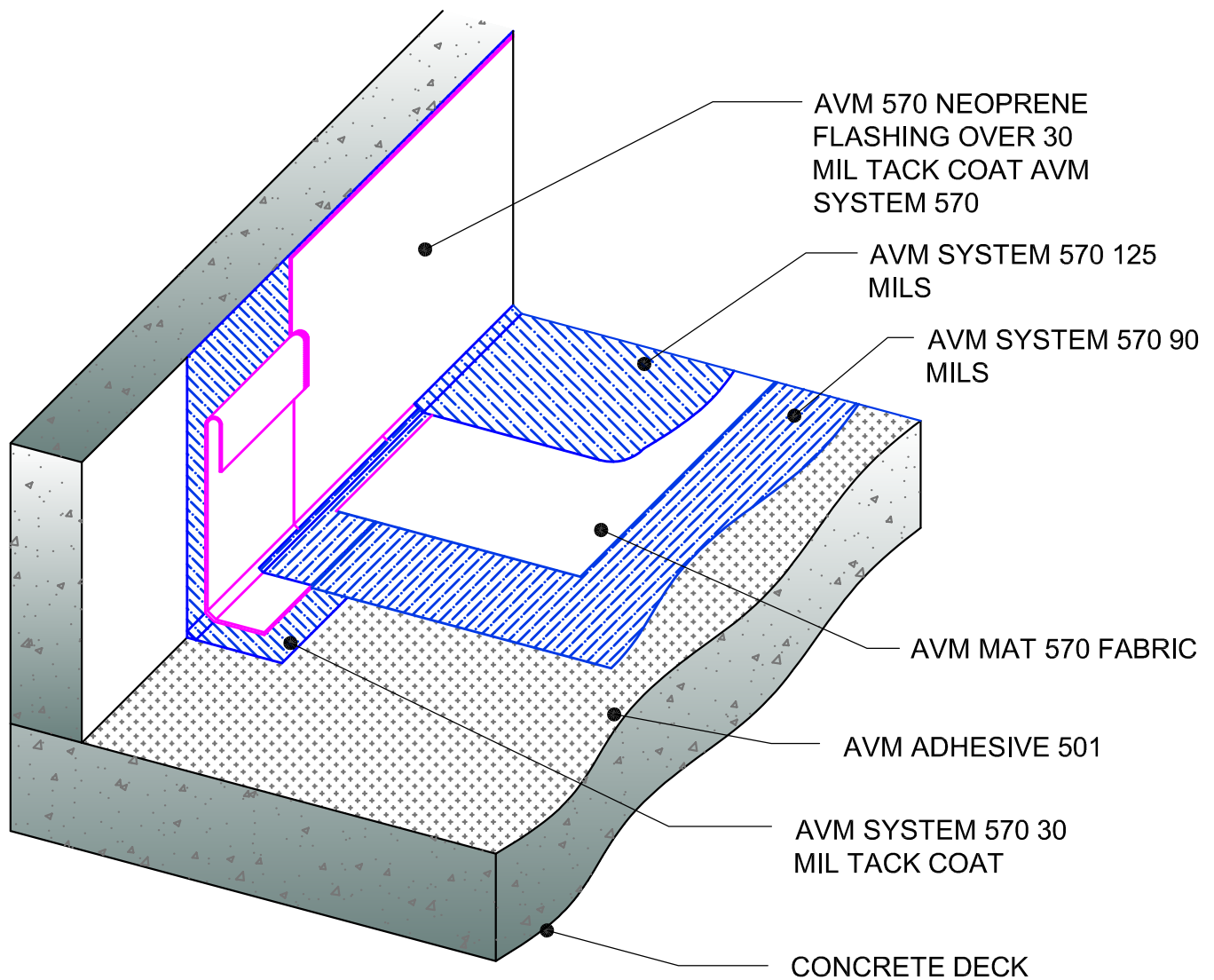
COMPLETELY COAT NEOPRENE FLASHING WITH AVM SYSTEM  
570 90 MIL BASE COAT IMMEDIATELY AFTER INSTALLATION

DETAIL #: AVM-0570-4051

AVM SYSTEM 570

## CONCRETE DECK

Fabric Reinforced System and  
Neoprene flashing Details  
AVM Aussie Membrane 570  
Hot Rubber

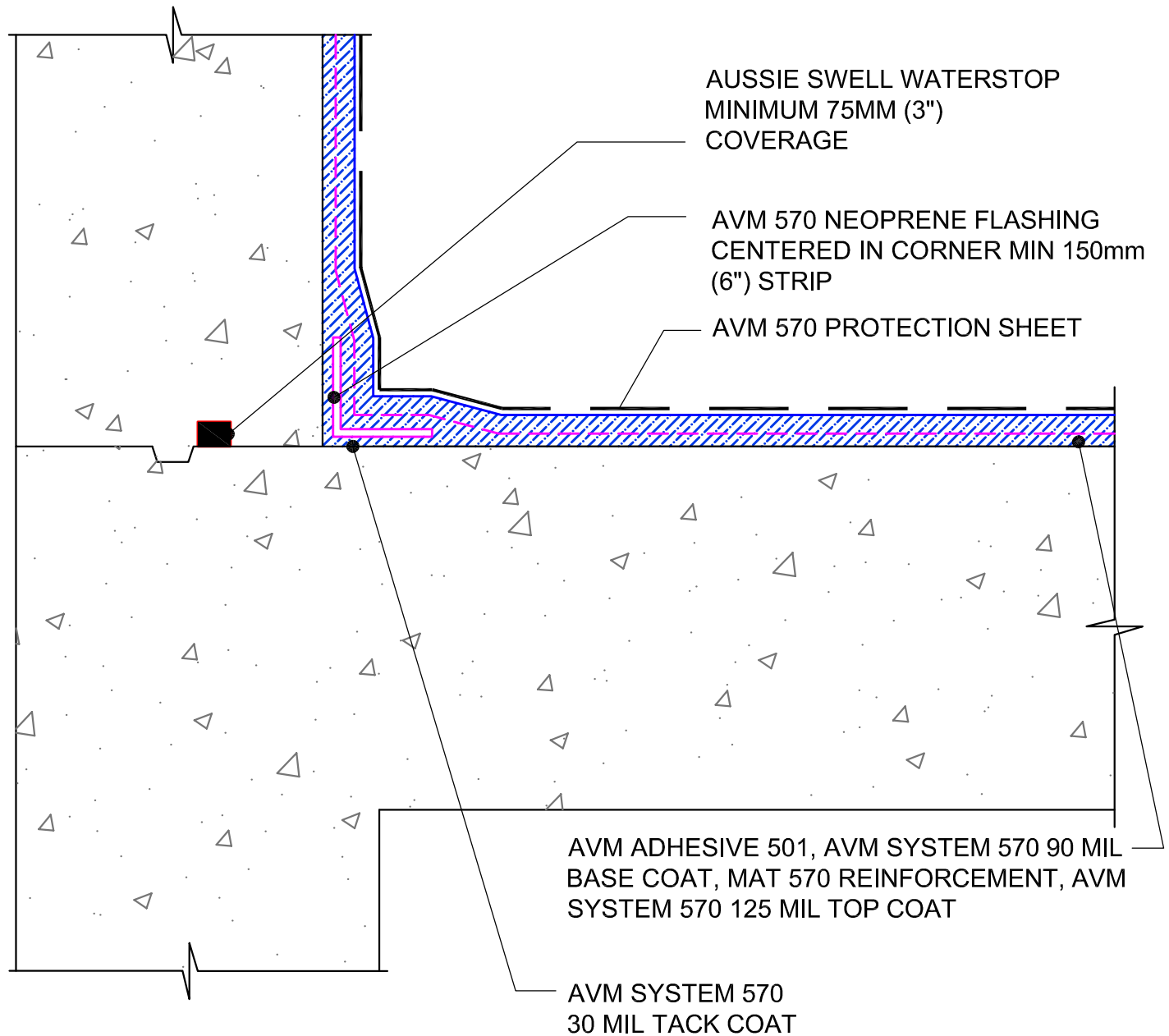


DETAIL #: AVM-0570-4201

AVM SYSTEM 570

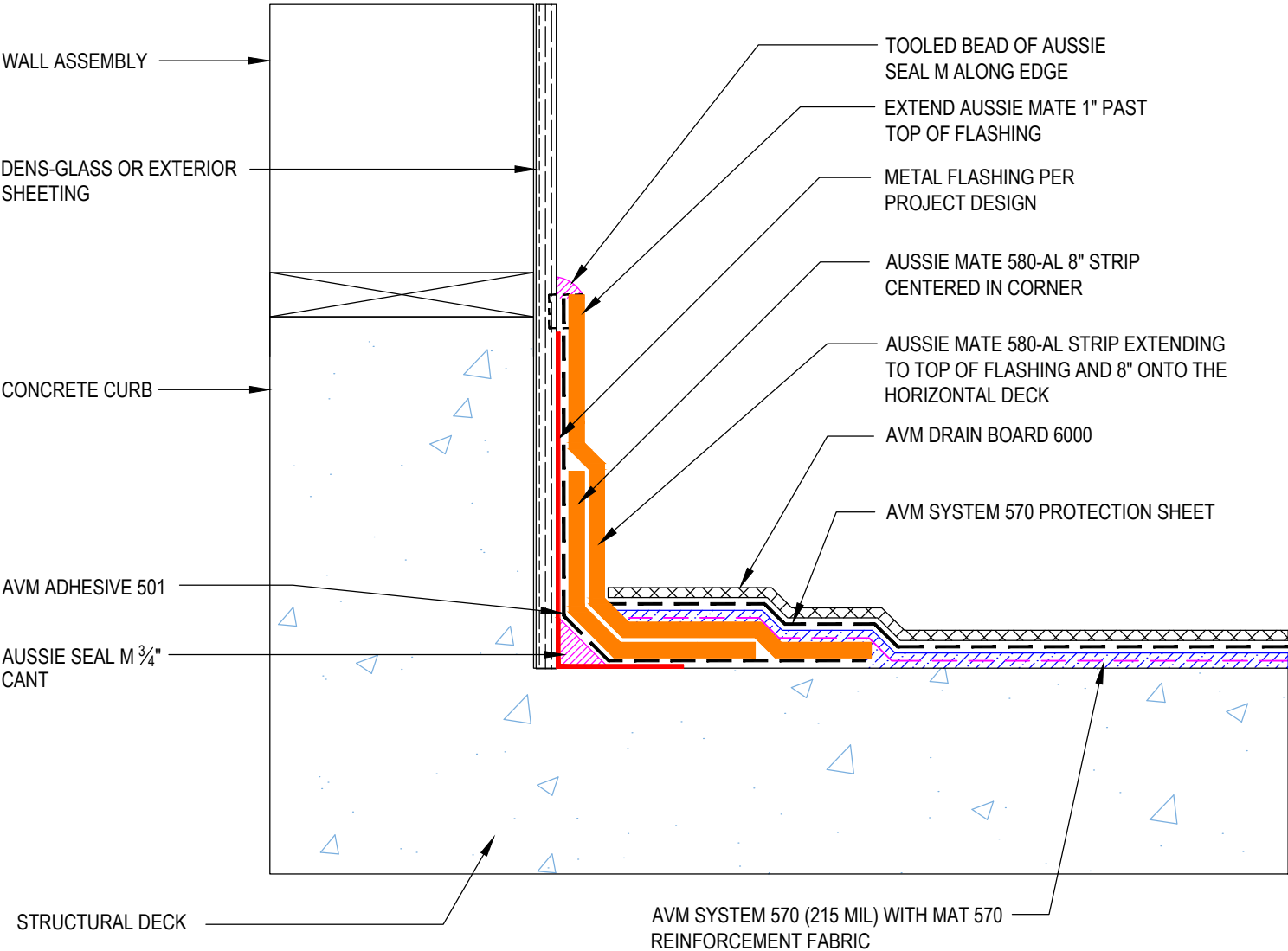
## CONCRETE DECK

Reinforced Hot Rubber  
at Cold Joints  
AVM Membrane 570  
Hot Rubber



DETAIL #:
0570-4210
AVM System 570

# Plaza Deck Corner Transition Option 1 AVM System 570



DETAIL #: AVM-0570-4211

AVM SYSTEM 570

## CONCRETE DECK

### Planter Overview AVM Membrane 570 Hot Rubber



GRADE TERMINATION  
(SEE AVM DETAIL  
0570-6401 FOR OPTIONS)

PLANTER WALL

AVM 570 NEOPRENE FLASHING  
CENTERED IN CORNER MIN 6" STRIP

AVM 570 30 MIL TACK COAT

AVM DRAIN BOARD 6000

AVM 570 PROTECTION SHEET

GPL-16 ROOT BARRIER

AVM PRIMER 570, AVM SYSTEM  
570 90 MIL BASE COAT, MAT 570  
REINFORCEMENT, AVM SYSTEM  
570 125 MIL TOP COAT

AVM 570 NEOPRENE  
FLASHING MIN 6" STRIP

DECK DRAIN

AVM Industries, Inc.  
8245 Remmet Ave, Canoga Park, CA 91304

Quality Waterproofing Products

888.414.1041 818.888.0050  
[www.avmindustries.com](http://www.avmindustries.com)

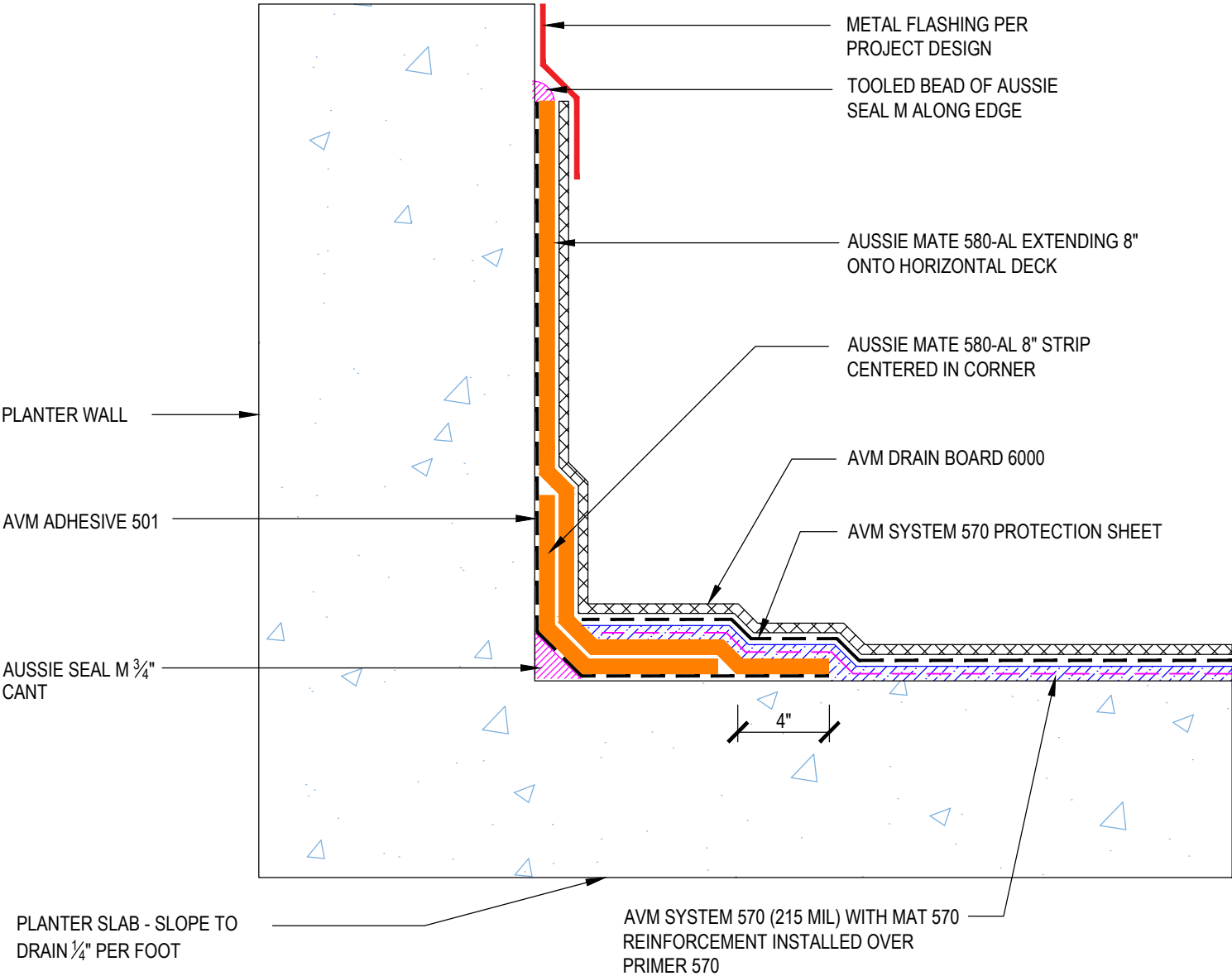
FILE NAME: **0570-4211-Planter-Overview**  
Protected by Copyright - AVM Industries, Inc.

Revision Date 5/1/2020



DETAIL #:
0570-4212
AVM System 570

# Plaza Deck Corner Transition Option 2 AVM System 570



DETAIL #: AVM-0570-4220

AVM SYSTEM 570

## CONCRETE DECK

### Treatment of Construction Joints AVM Aussie Membrane 570 Hot Rubber



AVM SYSTEM 570  
125 MIL TOP LAYER

AVM SYSTEM 570  
90 MIL BASE COAT

CONCRETE DECK

AVM 570 PROTECTION  
SHEET

AVM MAT 570  
REINFORCING FABRIC

MAT 570 FABRIC

AVM SYSTEM 570  
30 MIL TACK COAT

AVM SYSTEM 570  
125 MIL TOP LAYER

AVM SYSTEM 570  
90 MIL BASE COAT

CONCRETE DECK

AVM 570 PROTECTION SHEET

AVM MAT 570 FABRIC

AVM 570 NEOPRENE FLASHING

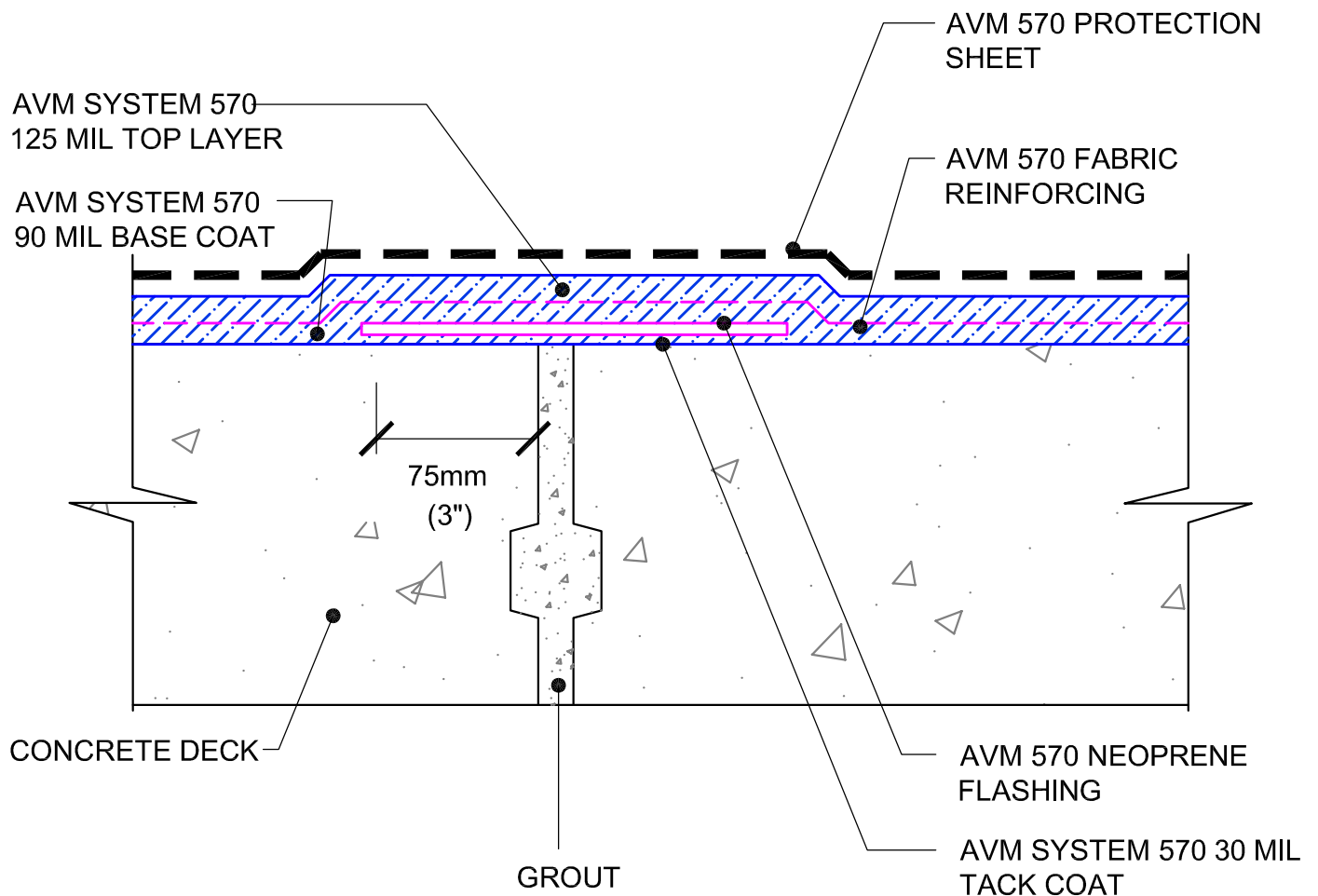
AVM SYSTEM 570  
30 MIL TACK COAT

DETAIL #: AVM-0570-4230

AVM SYSTEM 570

## CONCRETE DECK

### Precast Joint Treatment AVM Aussie Membrane 570 Hot Rubber

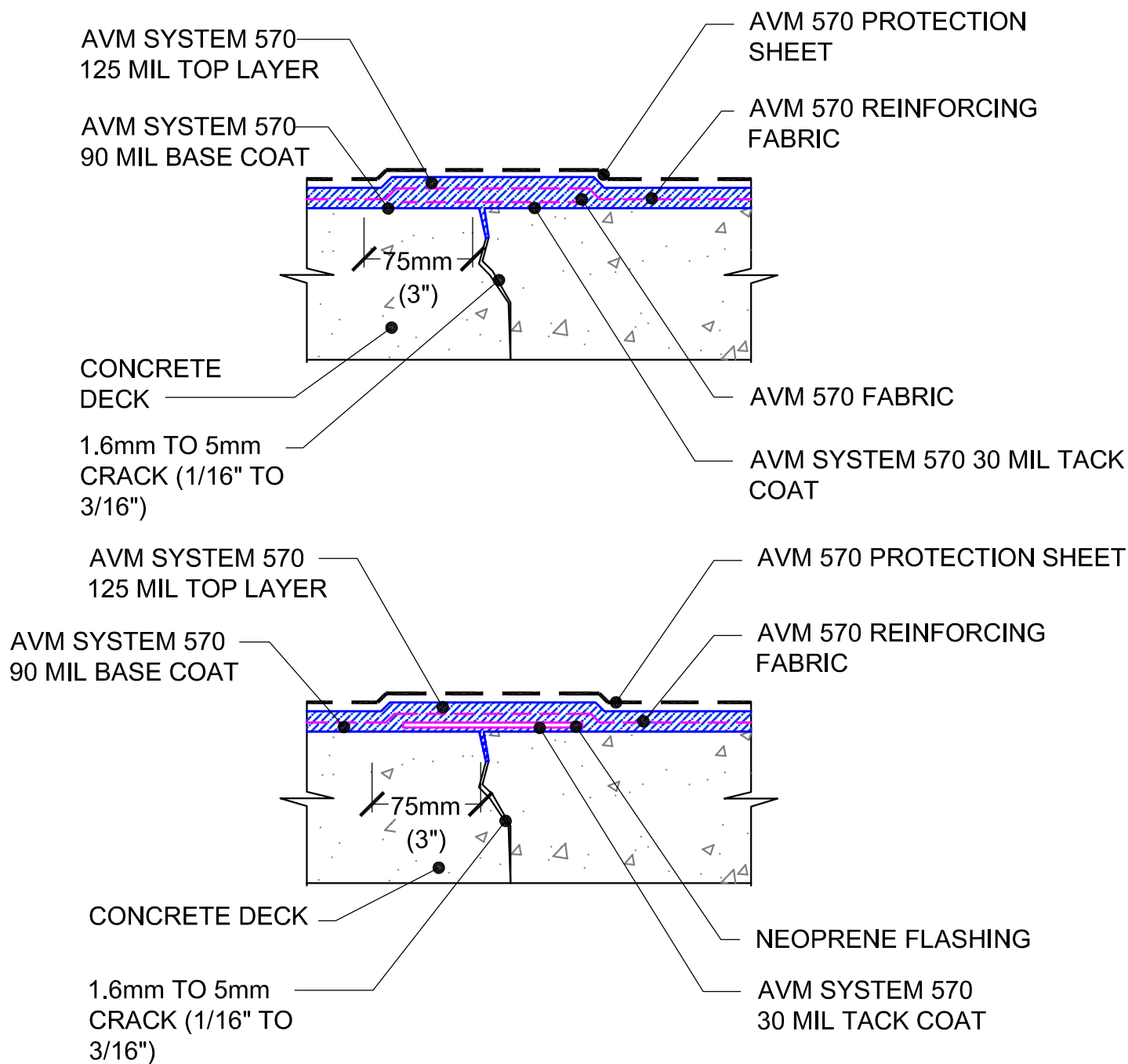


DETAIL #: AVM-0570-4401

AVM SYSTEM 570

## CONCRETE DECK

Treatment of Cracks - 1/16" to 3/16"  
AVM Aussie Membrane 570  
Hot Rubber

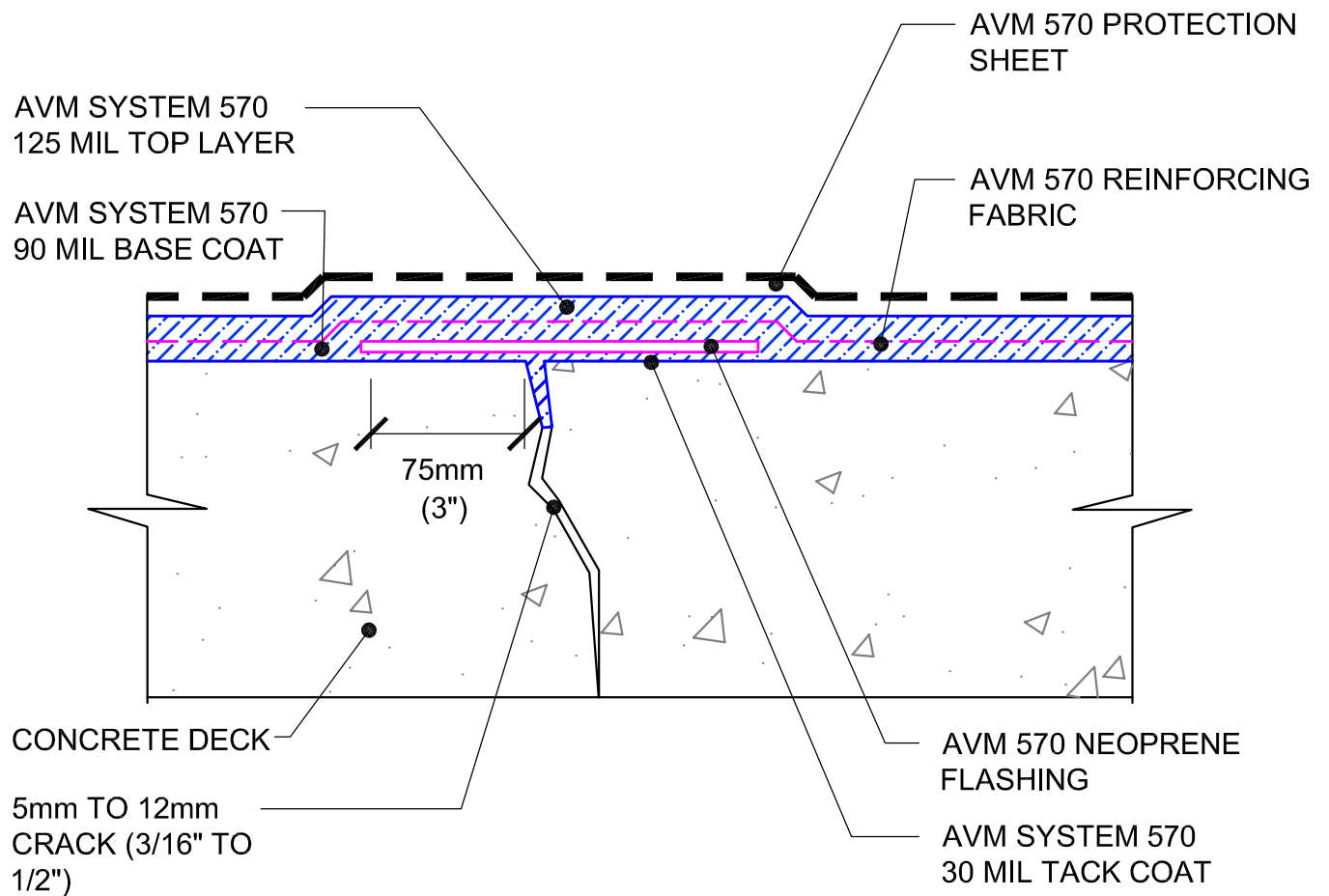


DETAIL #: AVM-0570-4420

AVM SYSTEM 570

CONCRETE DECK

Treatment of Cracks - 3/16" - 1/2"  
AVM Aussie Membrane 570  
Hot Rubber

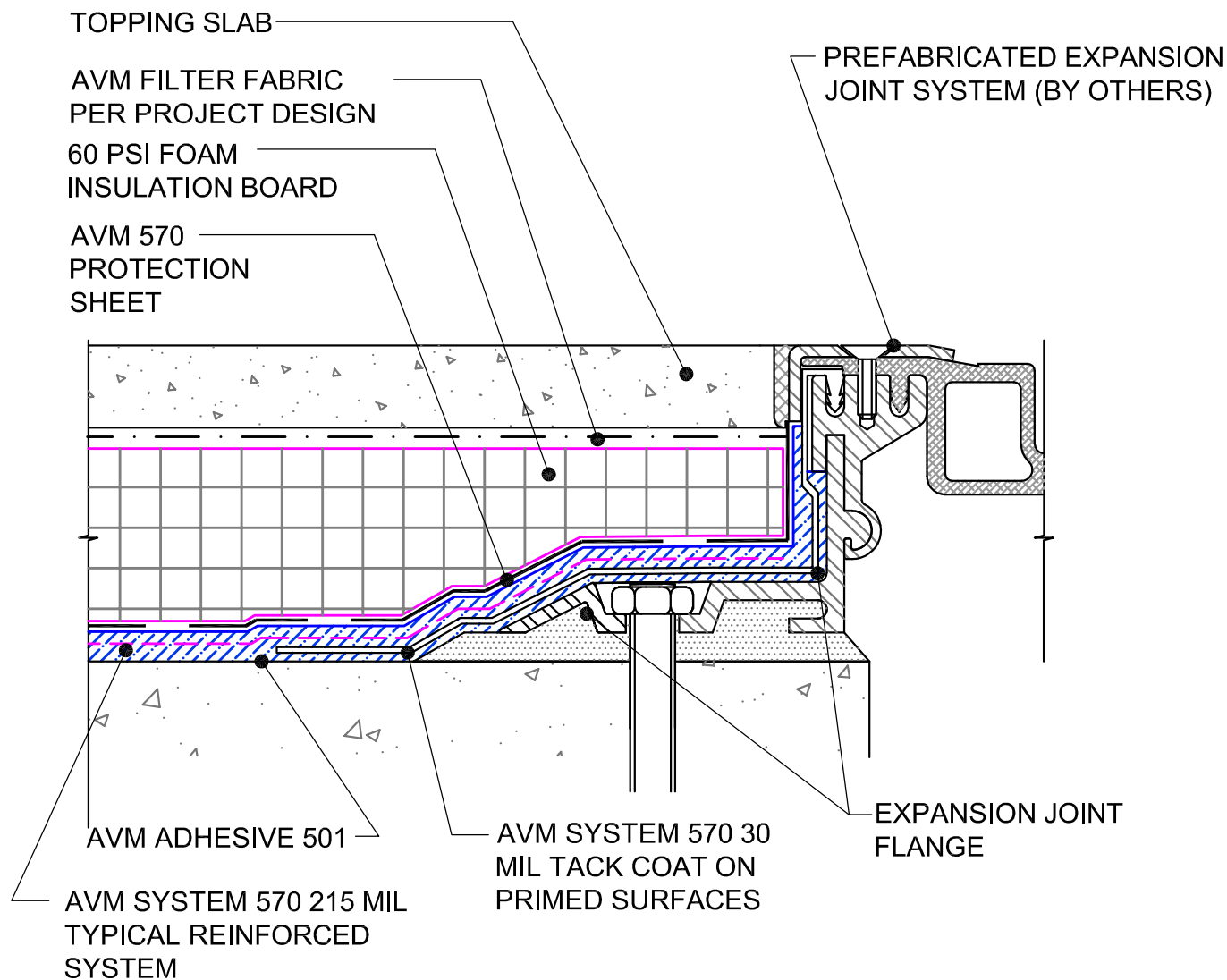


DETAIL #: AVM-0570-4601

AVM SYSTEM 570

## CONCRETE DECK

Mid-Deck to Expansion Joint  
Topping Slab  
AVM Aussie Membrane 570  
Hot Rubber



NOTE: AVM PRODUCTS ARE NOT DESIGNED TO WATERPROOF EXPANSION JOINTS. EXPANSION JOINTS REQUIRE A PROPER EXPANSION JOINT MATERIAL MANUFACTURED BY OTHERS. AVM PRODUCTS CAN BE INSTALLED OVER EXPANSION JOINT MATERIALS AS ILLUSTRATED ABOVE. CHECK WITH THE EXPANSION JOINT PRODUCT MANUFACTURER FOR MATERIAL COMPATIBILITY.

**NOTE: CONSULT WITH THE EXPANSION JOINT  
MANUFACTURER FOR SPECIFIC INFORMATION ON THEIR  
PRODUCT AND INSTALLATION PROCEDURES**

DETAIL #: AVM-0570-4651

AVM SYSTEM 570

CONCRETE DECK

Mid-Deck to Expansion Joint- Pavers  
AVM Aussie Membrane 570  
Hot Rubber

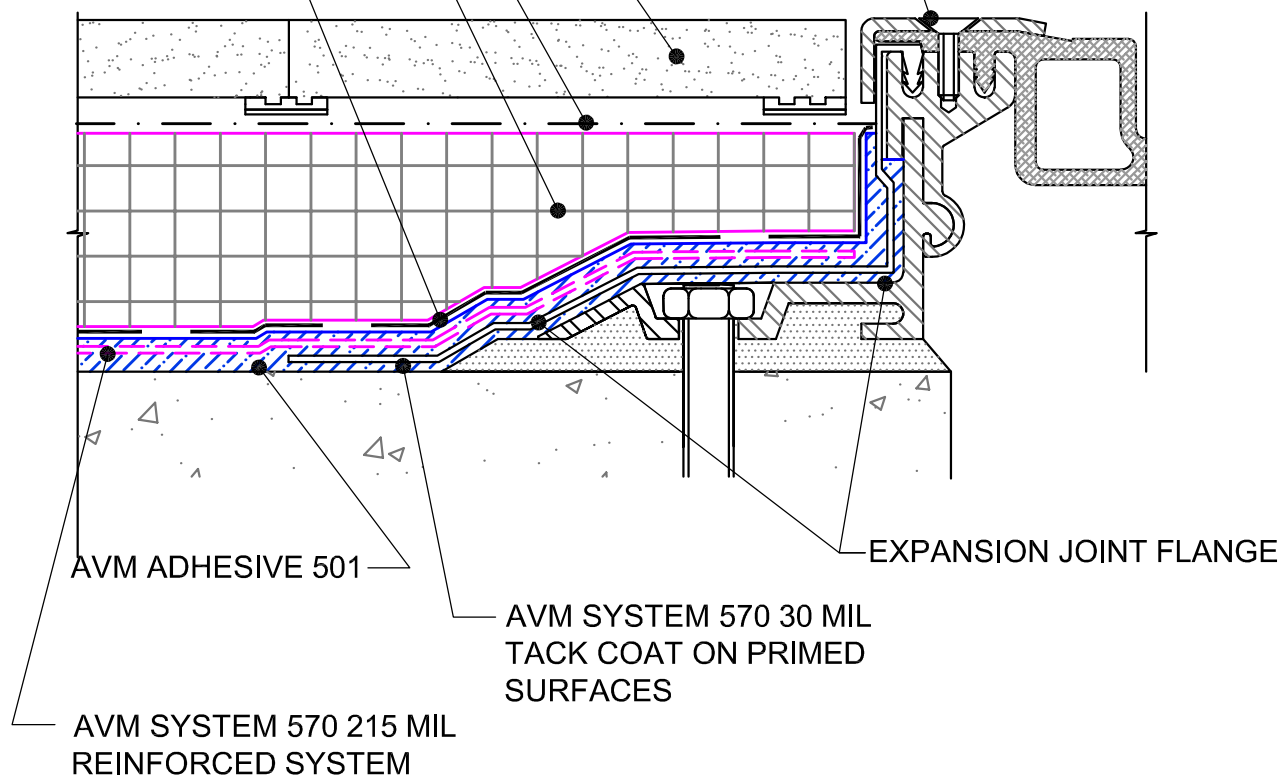


PEDESTAL AND PAVER  
SYSTEM

AVM FILTER FABRIC PER  
PROJECT DESIGN  
60 PSI FOAM INSULATION  
BOARD BOARD

AVM 570  
PROTECTION  
SHEET

PREFABRICATED  
EXPANSION JOINT SYSTEM  
(BY OTHERS)



NOTE: AVM PRODUCTS ARE NOT DESIGNED TO WATERPROOF EXPANSION JOINTS. EXPANSION JOINTS REQUIRE A PROPER EXPANSION JOINT MATERIAL MANUFACTURED BY OTHERS. AVM PRODUCTS CAN BE INSTALLED OVER EXPANSION JOINT MATERIALS AS ILLUSTRATED ABOVE. CHECK WITH THE EXPANSION JOINT PRODUCT MANUFACTURER FOR MATERIAL COMPATIBILITY.

**NOTE: CONSULT WITH THE EXPANSION JOINT  
MANUFACTURER FOR SPECIFIC INFORMATION ON THEIR  
PRODUCT AND INSTALLATION PROCEDURES**

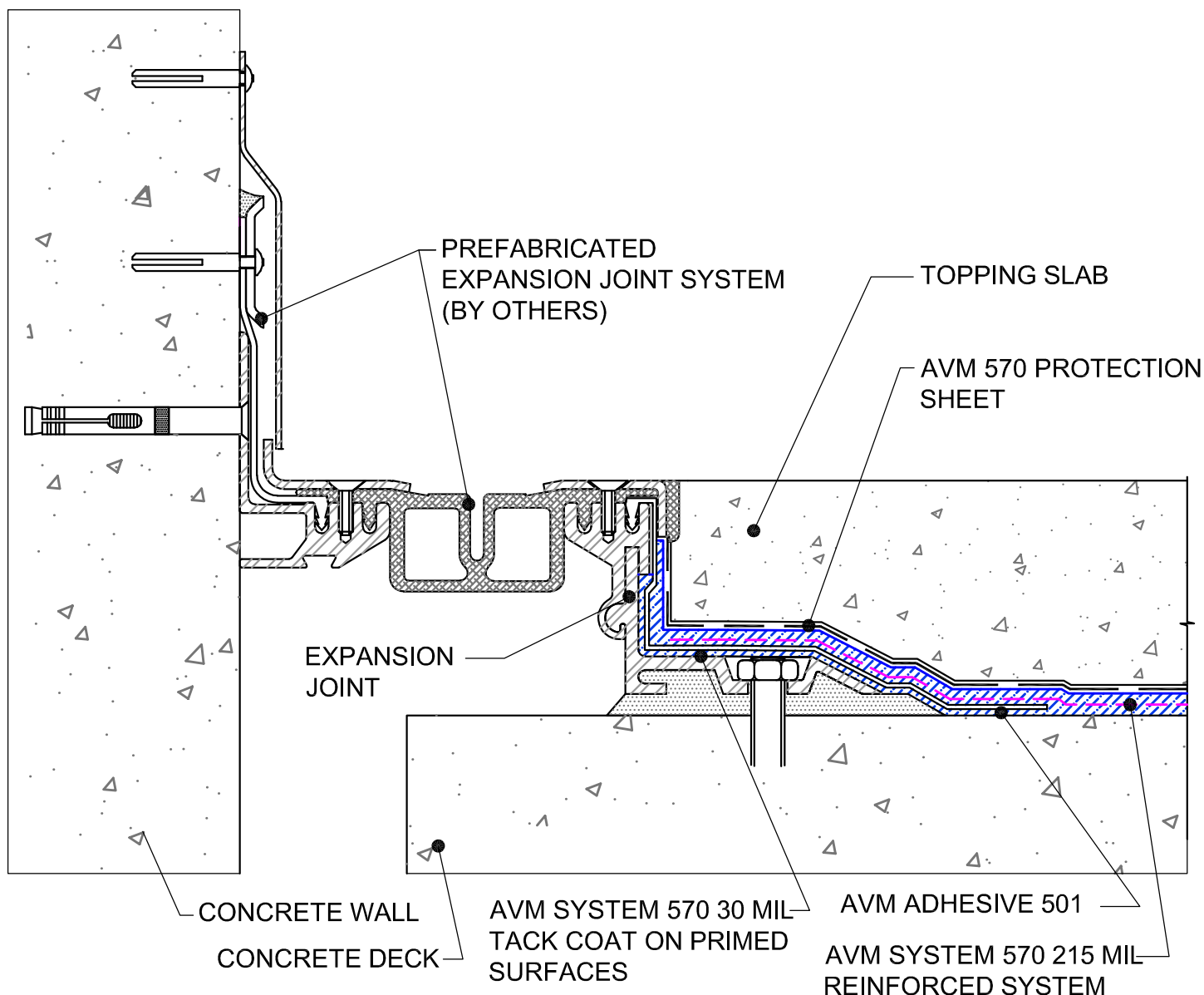


DETAIL #: AVM-0570-4701

AVM SYSTEM 570

## CONCRETE DECK

Deck to Wall Expansion Joint  
AVM Aussie Membrane 570  
Hot Rubber



NOTE: AVM PRODUCTS ARE NOT DESIGNED TO WATERPROOF EXPANSION JOINTS. EXPANSION JOINTS REQUIRE A PROPER EXPANSION JOINT MATERIAL MANUFACTURED BY OTHERS. AVM PRODUCTS CAN BE INSTALLED OVER EXPANSION JOINT MATERIALS AS ILLUSTRATED ABOVE. CHECK WITH THE EXPANSION JOINT PRODUCT MANUFACTURER FOR MATERIAL COMPATIBILITY.

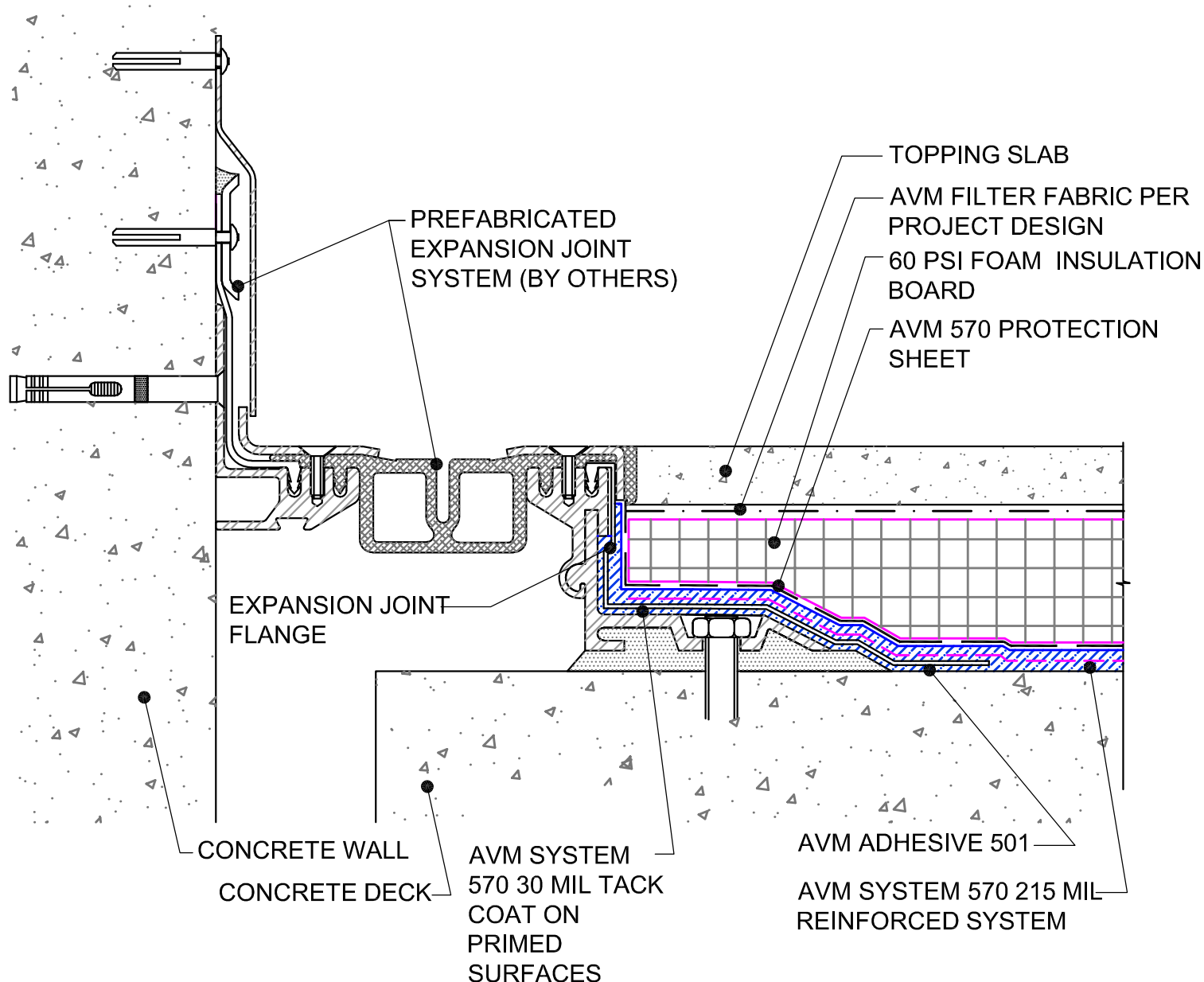
**NOTE: CONSULT WITH THE EXPANSION JOINT  
MANUFACTURER FOR SPECIFIC INFORMATION ON THEIR  
PRODUCT AND INSTALLATION PROCEDURES**

DETAIL #: AVM-0570-4751

AVM SYSTEM 570

## CONCRETE DECK

Deck to Wall Expansion Joint  
with Insulation  
AVM Aussie Membrane 570  
Hot Rubber



NOTE: AVM PRODUCTS ARE NOT DESIGNED TO WATERPROOF EXPANSION JOINTS. EXPANSION JOINTS REQUIRE A PROPER EXPANSION JOINT MATERIAL MANUFACTURED BY OTHERS. AVM PRODUCTS CAN BE INSTALLED OVER EXPANSION JOINT MATERIALS AS ILLUSTRATED ABOVE. CHECK WITH THE EXPANSION JOINT PRODUCT MANUFACTURER FOR MATERIAL COMPATIBILITY.

**NOTE: CONSULT WITH THE EXPANSION JOINT  
MANUFACTURER FOR SPECIFIC INFORMATION ON THEIR  
PRODUCT AND INSTALLATION PROCEDURES**

AVM Industries, Inc.  
8245 Remmet Ave, Canoga Park, CA 91304

Quality Waterproofing Products

888.414.1041 818.888.0050  
[www.avmindustries.com](http://www.avmindustries.com)

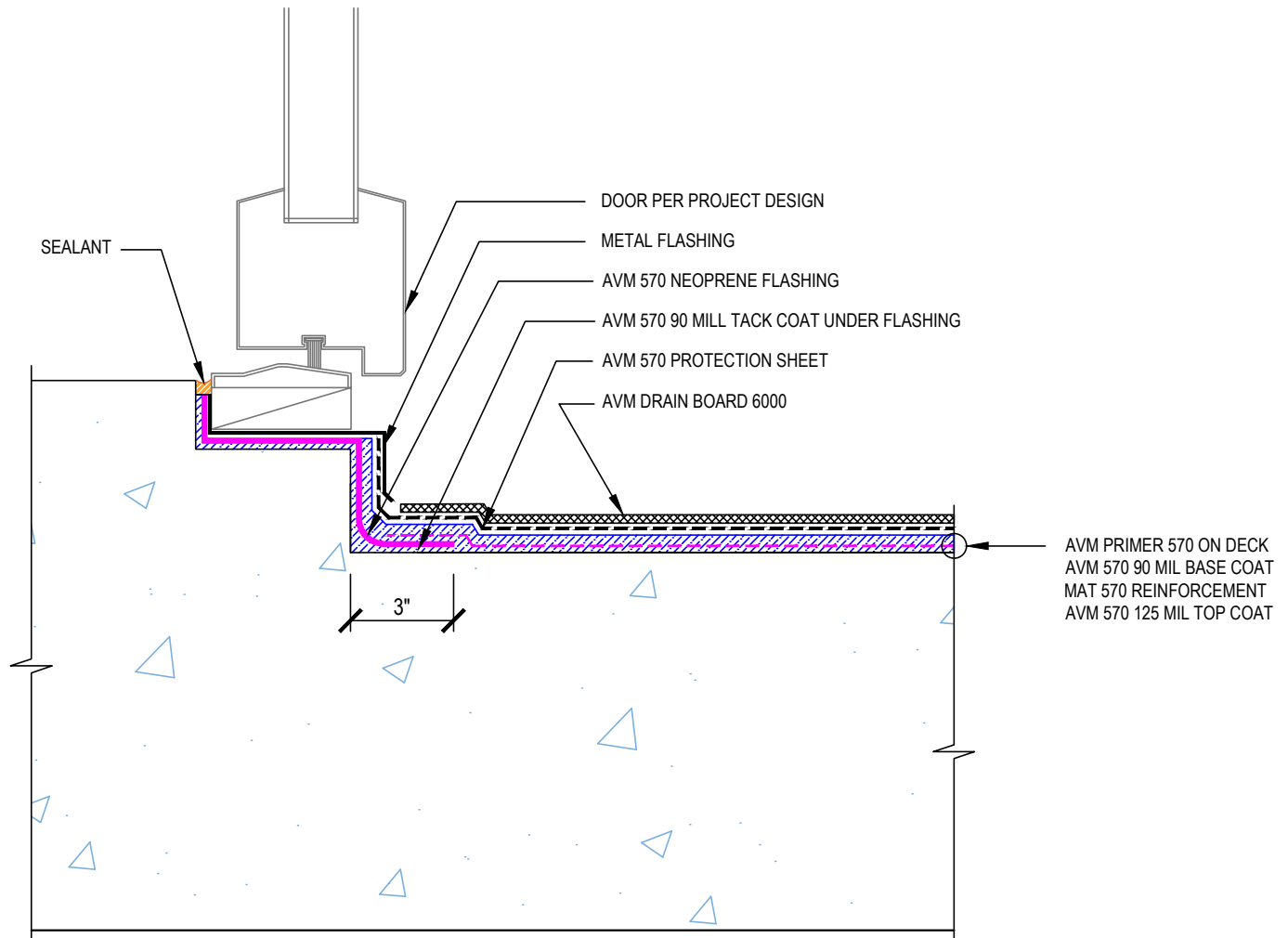
FILE NAME: **0570-4751-Deck-to-Wall-Expansion-Joint-with-Insulation**  
Protected by Copyright - AVM Industries, Inc.

Revision Date 1/23/2019

DETAIL #:  
0570-4800  
AVM System 570

## Door Threshold

### AVM System 570 Hot Rubber



#### Notes:

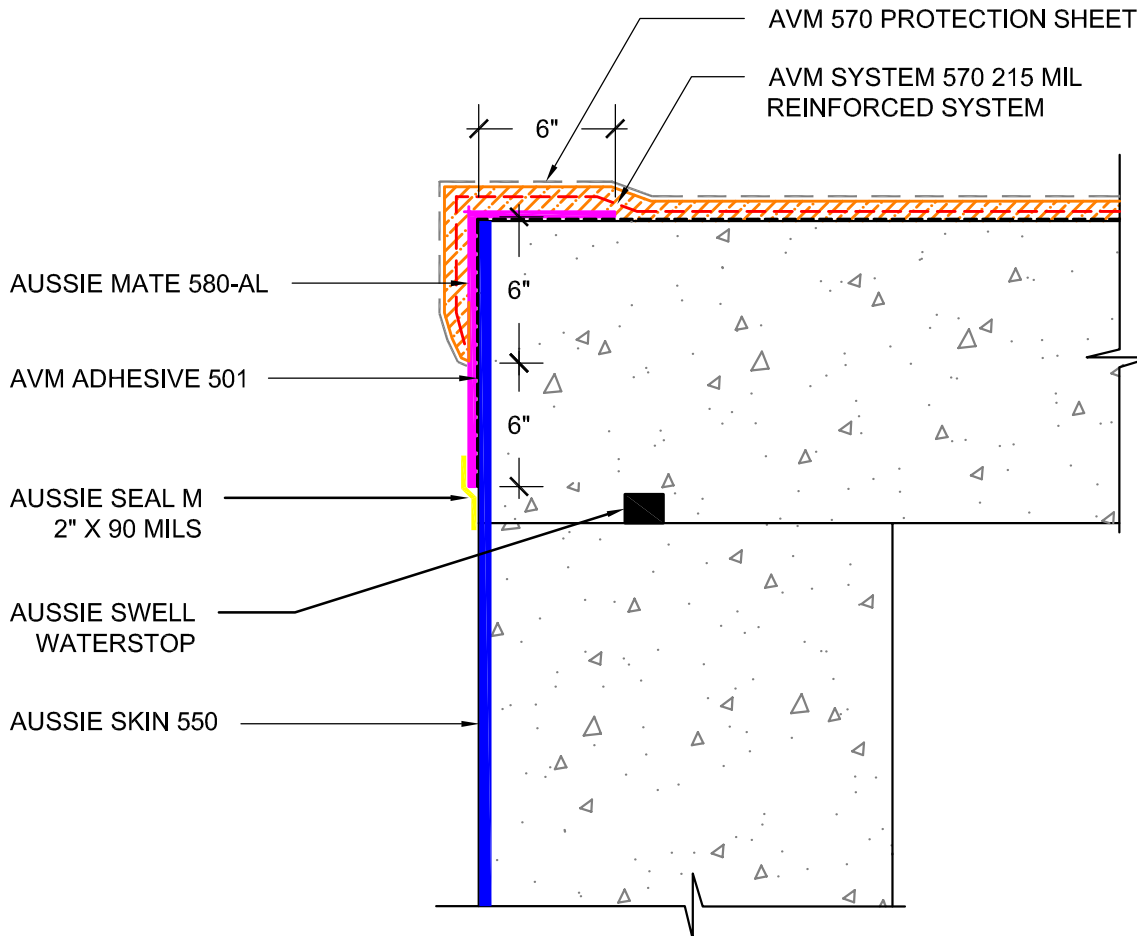
1. Aussie Membrane 570 is a Hot Rubber(Hot-Applied Asphalt-Based Composition Membrane) for Between-Slabs, Planters, Roof-Gardens and similar type Waterproofing.
2. Typical membrane is 215 mils thick with fabric reinforcement. If specified differently, contact AVM for approval.
3. Contact AVM if no drain board or protection board is specified.
4. Remove/grind/repair as necessary any protrusions, sharp edges, etc that may puncture or damage the membrane.
5. Substrates must be sloped to drains and/or edges before membrane installation. (Min 1/4" per foot) Substrates must have sufficient drains and proper drainage systems to effectively evacuate excessive water.

DETAIL #: AVM-0570-5001

AVM SYSTEM 570

## TYPICAL PLAZA

### Vertical Transition to Aussie Skin AVM Aussie Membrane 570 Hot Rubber



## USE AVM ADHESIVE 501 ON CONCRETE RECEIVING AVM SYSTEM 570

### NOTES:

1. Aussie Membrane 570 is a Hot Rubber(Hot-Applied Asphalt-Based Composition Membrane) for Between-Slabs, Planters, Roof-Gardens and similar type Waterproofing.
2. Typical membrane is 215 mils thick with fabric reinforcement. If specified differently, contact AVM for approval.
3. Contact AVM if no drain board or protection board is specified.
4. Remove/grind/repair as necessary any protrusions, sharp edges, etc that may puncture or damage the membrane.
5. Deck-to-Wall corners must be waterproofed as shown on AVM's Details.
6. Substrates must be sloped to drains and/or edges before membrane installation. (Min 1/4" per foot) Substrates must have sufficient drains and proper drainage systems to effectively evacuate excessive water.
7. If water is to drain over the edge, then edge metals MUST have sufficient weep holes (at least every 6") and must be strong enough (thick enough) to act as a concrete form.
8. Many edge details are possible. All must allow for proper water evacuation. (None should trap water) Consult AVM for details.
9. Drainage board for topping Slabs up to 4" thick for pedestrian applications: Use AVM Drain Board 6000.
10. Drainage board for topping slabs over 4" thick or for vehicular applications: Use AVM Drain Board 9000.

AVM Industries, Inc.  
8245 Remmet Ave, Canoga Park, CA 91304

Quality Waterproofing Products

888.414.1041 818.888.0050  
www.avmindustries.com

FILE NAME: 0570-5001-Vertical-Transition-to-Aussie-Skin

Protected by Copyright - AVM Industries, Inc.

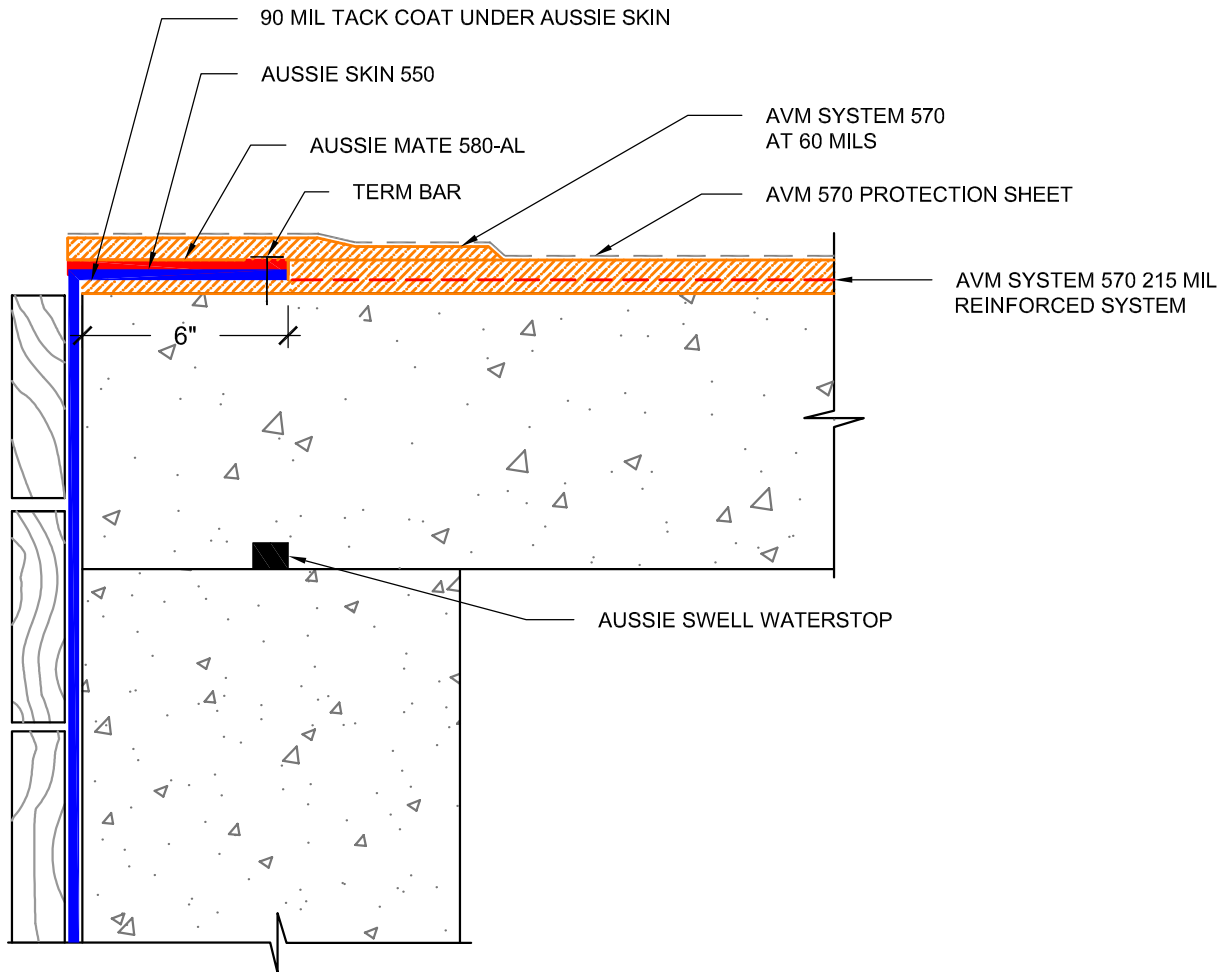
Revision Date 3/5/2019

DETAIL #: AVM-0570-5002

AVM SYSTEM 570

## TYPICAL PLAZA

### Horizontal Transition to Aussie Skin AVM Aussie Membrane 570 Hot Rubber



## USE AVM ADHESIVE 501 ON CONCRETE RECEIVING AVM SYSTEM 570

### NOTES:

1. Aussie Membrane 570 is a Hot Rubber(Hot-Applied Asphalt-Based Composition Membrane) for Between-Slabs, Planters, Roof-Gardens and similar type Waterproofing.
2. Typical membrane is 215 mils thick with fabric reinforcement. If specified differently, contact AVM for approval.
3. Contact AVM if no drain board or protection board is specified.
4. Remove/grind/repair as necessary any protrusions, sharp edges, etc that may puncture or damage the membrane.
5. Deck-to-Wall corners must be waterproofed as shown on AVM's Details.
6. Substrates must be sloped to drains and/or edges before membrane installation. (Min 1/4" per foot) Substrates must have sufficient drains and proper drainage systems to effectively evacuate excessive water.
7. If water is to drain over the edge, then edge metals MUST have sufficient weep holes (at least every 6") and must be strong enough (thick enough) to act as a concrete form.
8. Many edge details are possible. All must allow for proper water evacuation. (None should trap water) Consult AVM for details.
9. Drainage board for topping Slabs up to 4" thick for pedestrian applications: Use AVM Drain Board 6000.
10. Drainage board for topping slabs over 4" thick or for vehicular applications: Use AVM Drain Board 9000.

AVM Industries, Inc.  
8245 Remmet Ave, Canoga Park, CA 91304

Quality Waterproofing Products

888.414.1041 818.888.0050  
www.avmindustries.com

FILE NAME: 0570-5002-Horizontal-Transition-to-Aussie-Skin

Protected by Copyright - AVM Industries, Inc.

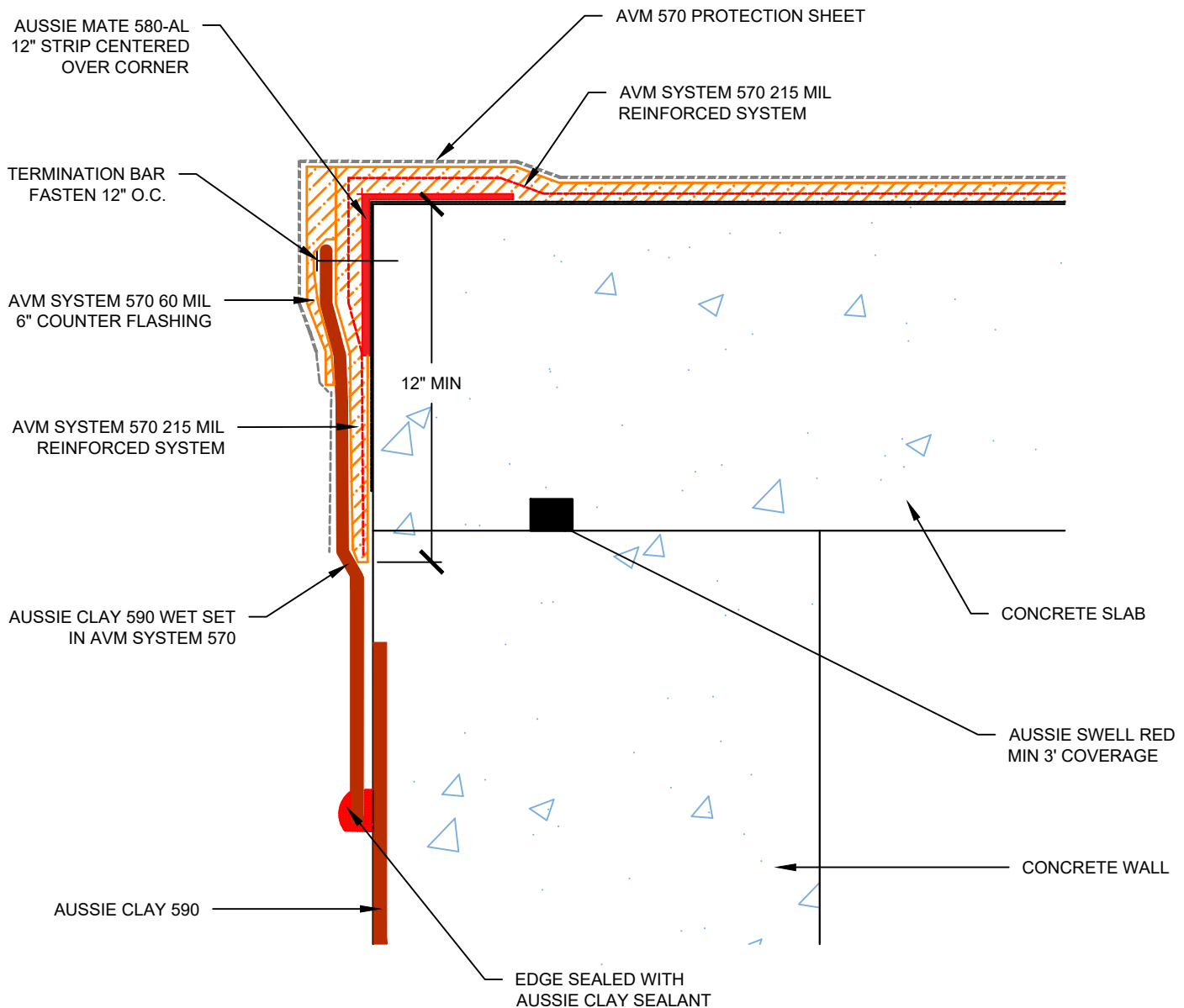
Revision Date 3/5/2019

DETAIL #:

0570-5010

AVM SYSTEM 570

# Vertical Transition AVM System 570 to Aussie Clay 590 AVM System 570 Hot Rubber



## USE AVM PRIMER 570 ON CONCRETE RECEIVING AVM SYSTEM 570

### Notes:

1. Aussie Membrane 570 is a Hot Rubber(Hot-Applied Asphalt-Based Composition Membrane) for Between-Slabs, Planters, Roof-Gardens and similar type Waterproofing.
2. Typical membrane is 215 mils thick with fabric reinforcement. If specified differently, contact AVM for approval.
3. Contact AVM if no drain board or protection board is specified.
4. Remove/grind/repair as necessary any protrusions, sharp edges, etc that may puncture or damage the membrane.
5. Deck-to-Wall corners must be waterproofed as shown on AVM's Details.
6. Substrates must be sloped to drains and/or edges before membrane installation. (Min 1/4" per foot) Substrates must have sufficient drains and proper drainage systems to effectively evacuate excessive water.
7. If water is to drain over the edge, then edge metals MUST have sufficient weep holes (at least every 6") and must be strong enough (thick enough) to act as a concrete form.
8. Many edge details are possible. All must allow for proper water evacuation. (None should trap water) Consult AVM for details.
9. Drainage board for topping Slabs up to 4" thick for pedestrian applications: Use AVM Drain Board 6000.
10. Drainage board for topping slabs over 4" thick or for vehicular applications: Use AVM Drain Board 9000.

AVM Industries, Inc.  
8245 Remmet Ave, Canoga Park, CA 91304

Quality Waterproofing Products

888.414.1041 818.888.0050  
www.avmindustries.com

FILE NAME: 0570-5010

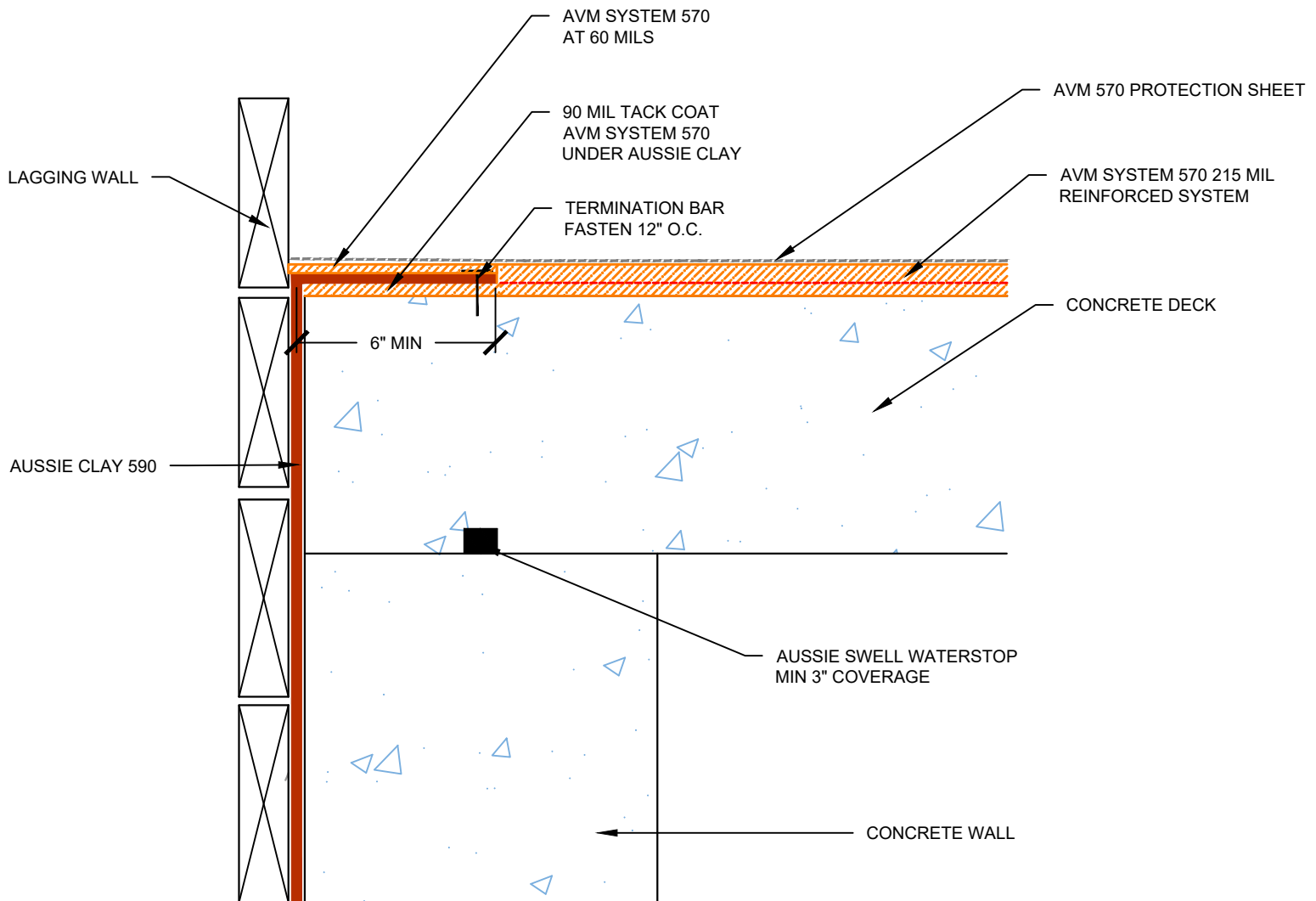
Protected by Copyright - AVM Industries, Inc. Revision Date 09/09/2020

DETAIL #:  
0570-5012

AVM System 570

## Horizontal Transition to Aussie Clay

### AVM System 570 Hot Rubber



### USE AVM PRIMER 570 ON CONCRETE RECEIVING AVM SYSTEM 570

#### Notes:

1. Aussie Membrane 570 is a Hot Rubber(Hot-Applied Asphalt-Based Composition Membrane) for Between-Slabs, Planters, Roof-Gardens and similar type Waterproofing.
2. Typical membrane is 215 mils thick with fabric reinforcement. If specified differently, contact AVM for approval.
3. Contact AVM if no drain board or protection board is specified.
4. Remove/grind/repair as necessary any protrusions, sharp edges, etc that may puncture or damage the membrane.
5. Deck-to-Wall corners must be waterproofed as shown on AVM's Details.
6. Substrates must be sloped to drains and/or edges before membrane installation. (Min 1/4" per foot) Substrates must have sufficient drains and proper drainage systems to effectively evacuate excessive water.
7. If water is to drain over the edge, then edge metals MUST have sufficient weep holes (at least every 6") and must be strong enough (thick enough) to act as a concrete form.
8. Many edge details are possible. All must allow for proper water evacuation. (None should trap water) Consult AVM for details.
9. Drainage board for topping Slabs up to 4" thick for pedestrian applications: Use AVM Drain Board 6000.
10. Drainage board for topping slabs over 4" thick or for vehicular applications: Use AVM Drain Board 9000.

AVM Industries, Inc.  
8245 Remmet Ave, Canoga Park, CA 91304

Quality Waterproofing Products

888.414.1041 818.888.0050  
www.avmindustries.com

FILE NAME: 0550G-5012

Protected by Copyright - AVM Industries, Inc. Revision Date 09/10/2020

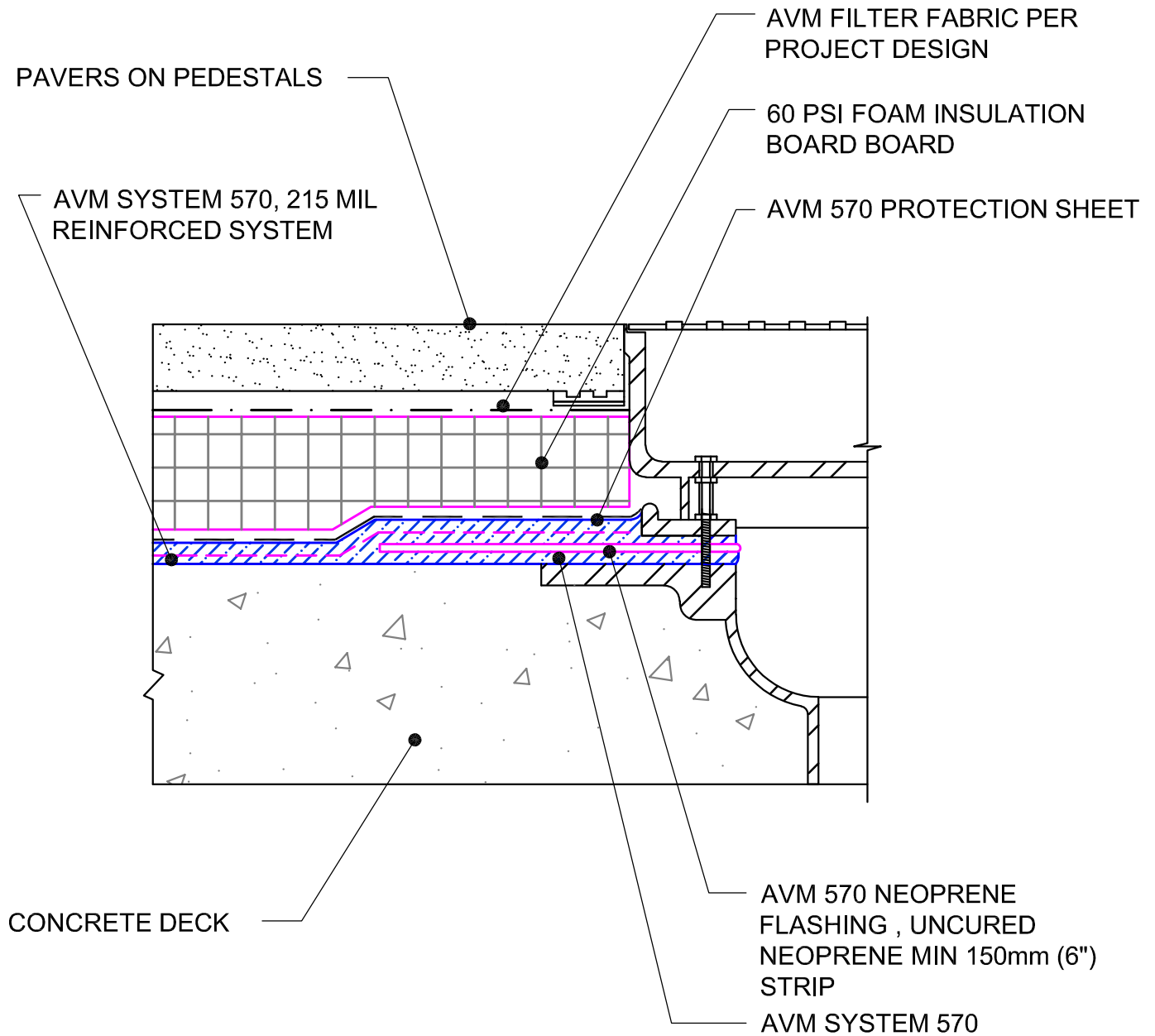


DETAIL #: AVM-0570-6001

AVM SYSTEM 570

## CONCRETE DECK

Drain Detail (Typical)  
AVM Aussie Membrane 570  
Hot Rubber

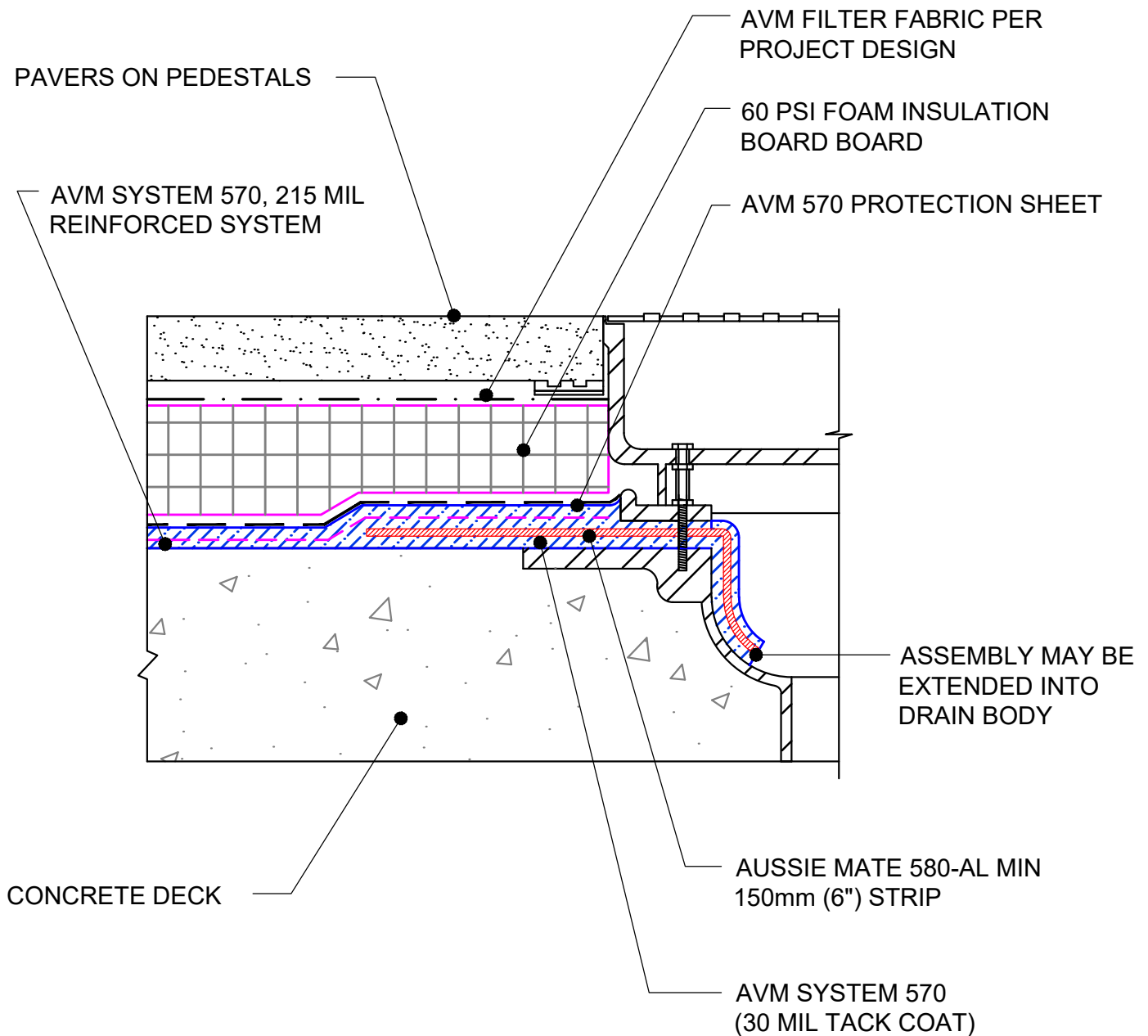


DETAIL #: AVM-0570-6005

AVM SYSTEM 570

## CONCRETE DECK

Drain Detail (Typical) with Aussie Mate 580-AL  
AVM Aussie Membrane 570  
Hot Rubber



AVM Industries, Inc.  
8245 Remmet Ave, Canoga Park, CA 91304

Quality Waterproofing Products

888.414.1041 818.888.0050  
[www.avmindustries.com](http://www.avmindustries.com)

FILE NAME: **0570-6005-Drain-Detail-(Typical) with Aussie Mate**  
Protected by Copyright - AVM Industries, Inc.

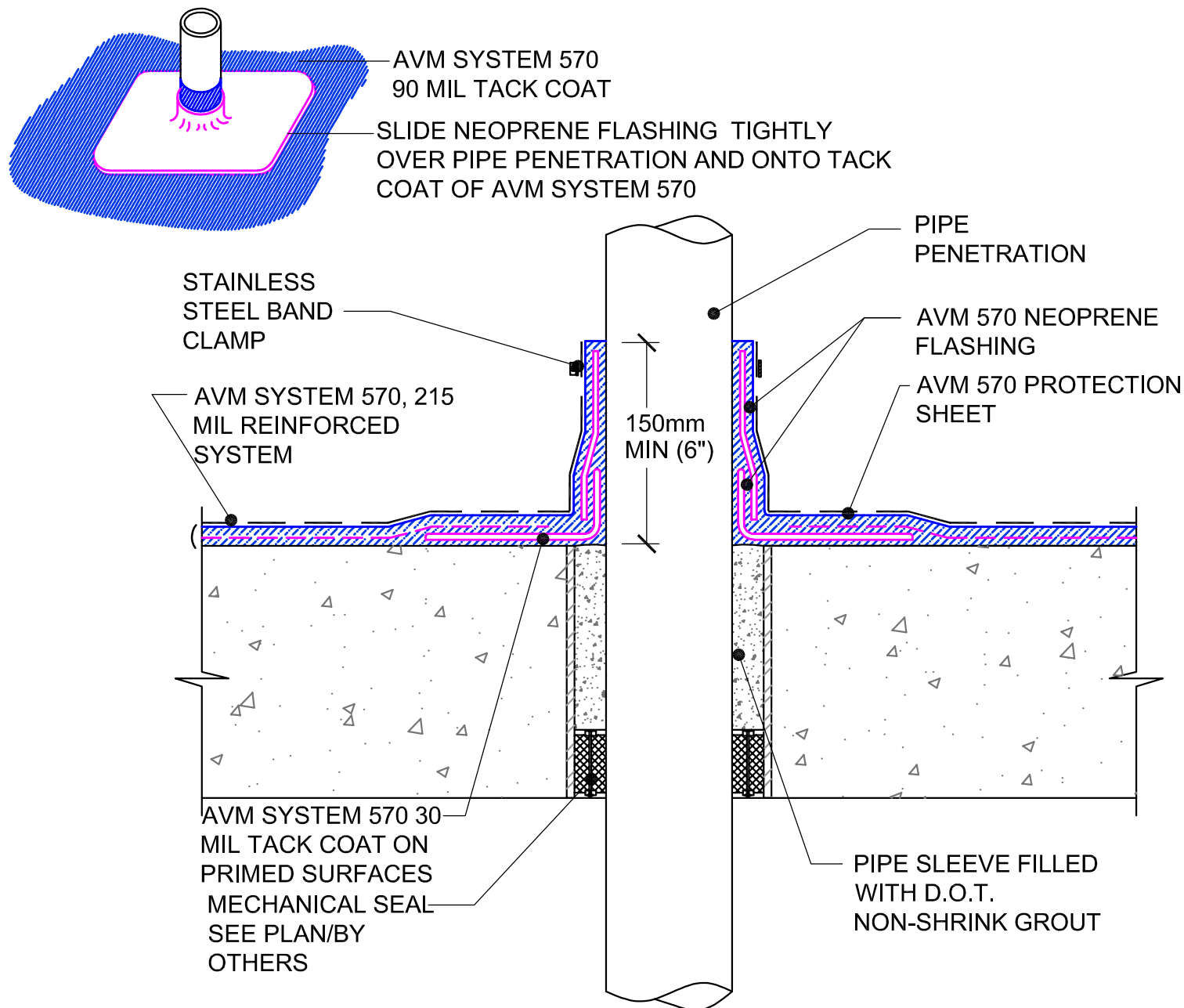
Revision Date 1/23/2021

DETAIL #: AVM-0570-6201

AVM SYSTEM 570

CONCRETE DECK

Vertical or Horizontal Pipe Penetrations  
AVM Aussie Membrane 570  
Hot Rubber



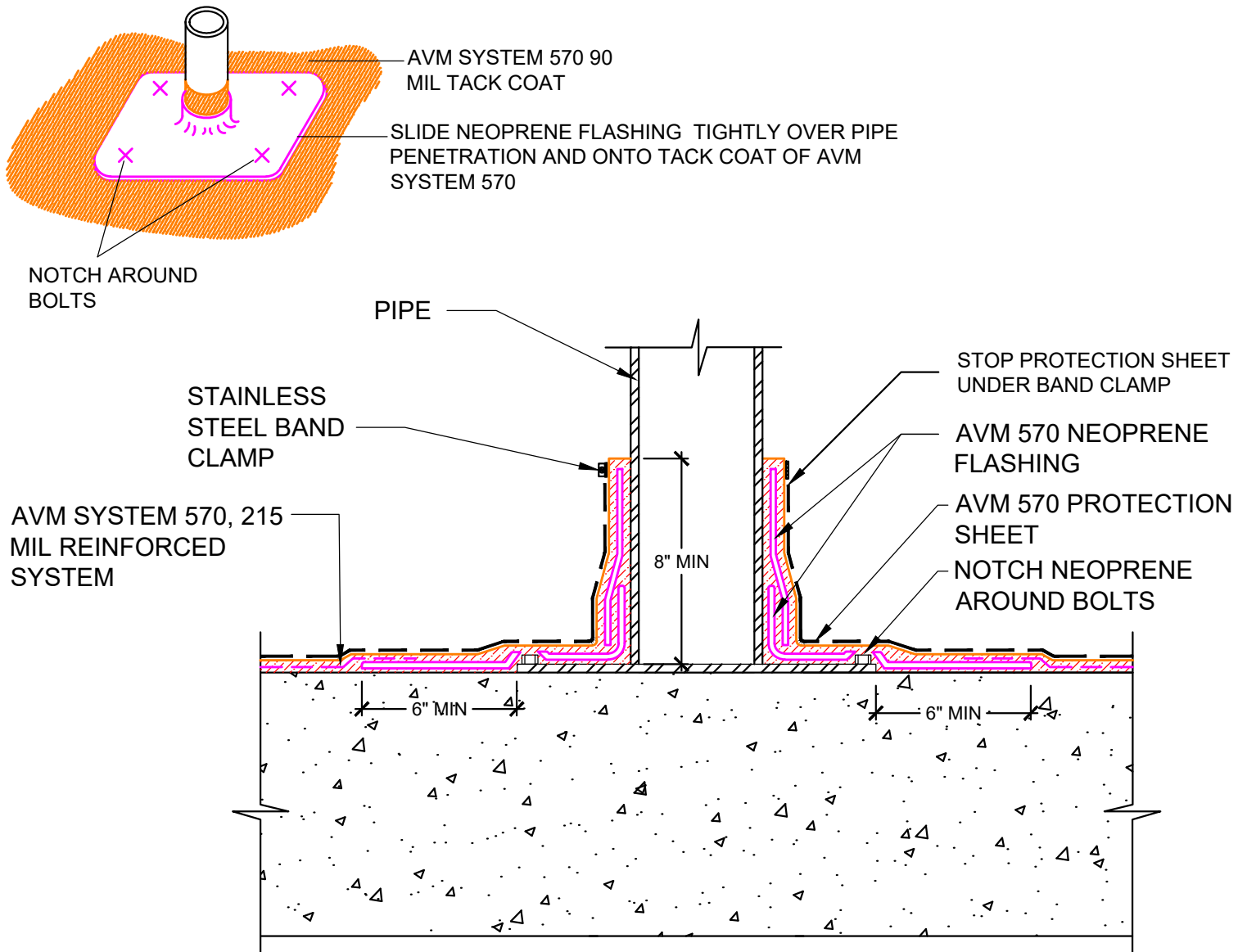
NOTE: CLEAN ALL PENETRATIONS OF DIRT, RUST AND OIL. ROUGHEN  
SURFACE OF PIPE BEFORE APPLYING PRIMER. VERIFY PENETRATION IS  
PROPERLY SECURED TO DECK OR WALL TO AVOID MOVEMENT OF PIPE.

DETAIL #: AVM-0570-6202

AVM SYSTEM 570

CONCRETE DECK

Pipe Penetration with Base Plate  
AVM Aussie Membrane 570  
Hot Rubber



NOTE: CLEAN ALL PENETRATIONS OF DIRT, RUST AND OIL. ROUGHEN SURFACE OF PIPE BEFORE APPLYING PRIMER. VERIFY PENETRATION IS PROPERLY SECURED TO DECK OR WALL TO AVOID MOVEMENT OF PIPE.

AVM Industries, Inc.  
8245 Remmet Ave, Canoga Park, CA 91304

Quality Waterproofing Products

888.414.1041 818.888.0050  
www.avmindustries.com

FILE NAME: **0570-6202-Horizontal-Pipe-Penetration-with-base-plate**

Protected by Copyright - AVM Industries, Inc.

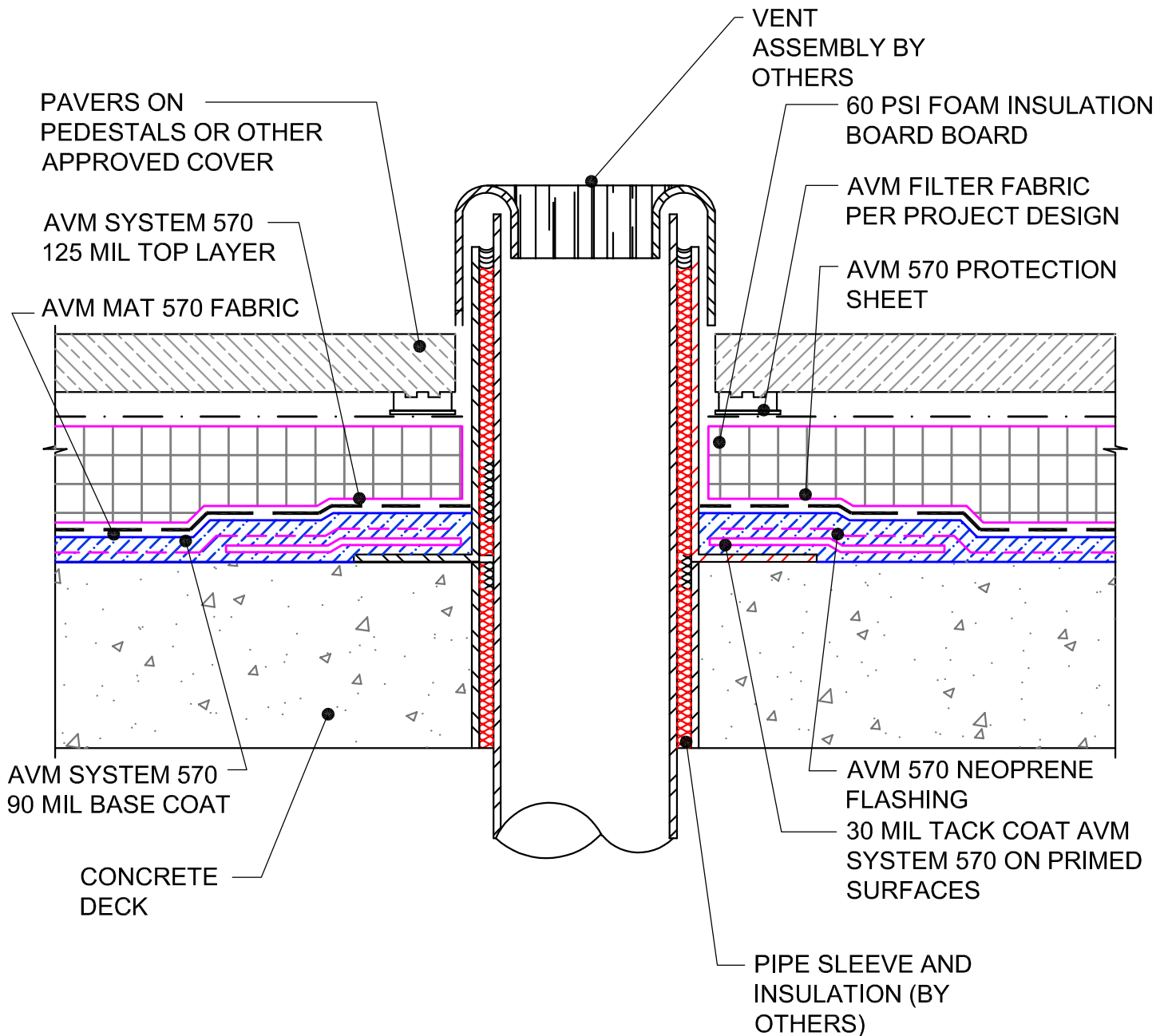
Revision Date 2/25/2019

DETAIL #: AVM-0570-6301

AVM SYSTEM 570

CONCRETE DECK

Vent Detail  
AVM Aussie Membrane 570  
Hot Rubber



DETAIL #: AVM-0570-6401

AVM SYSTEM 570

## FOUNDATION WALL

Termination at Grade  
AVM Aussie Membrane 570  
Hot Rubber

