

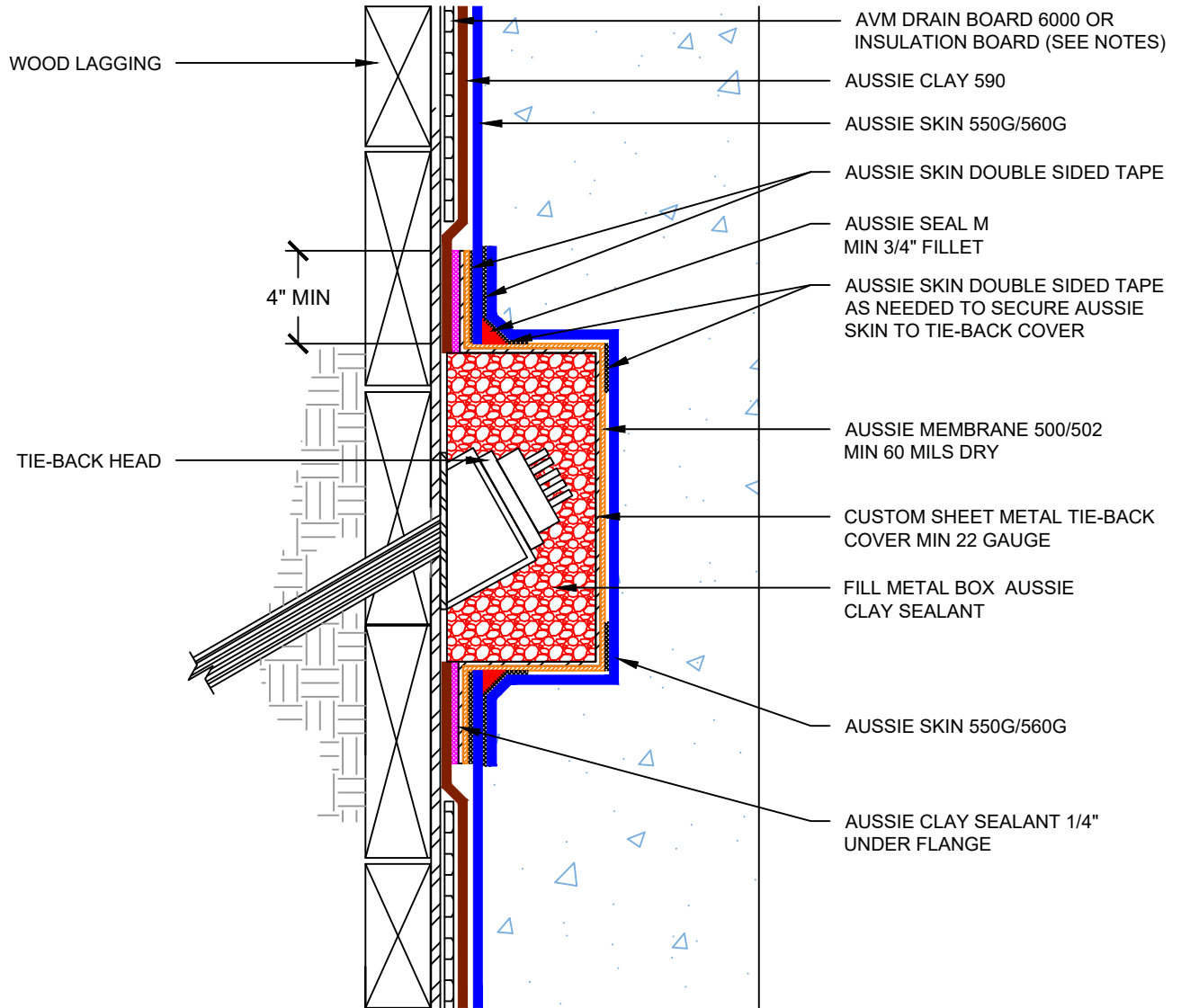
DETAIL #:
AVM-550G_0560G-1530AC
 Aussie Skin 550G/560G - 590

Metal Tie-Back Cover



Aussie Clay Dual System

Only Use if AVM's Standard Tie-Back Cover Cannot be Used



Notes:

1. Aussie Clay & Aussie Clay PL are bentonite sheet membranes for waterproofing below-grade vertical and horizontal surfaces, including blindside and backfilled applications. Aussie Clay can be used with shotcrete or cast in place concrete in hydrostatic or non-hydrostatic conditions.
2. Aussie Skin 550G & 560G are Heavy Duty, Easy to Install, Puncture Resistant Sheet Waterproofing Membranes with added technologies creating excellent adhesion between membrane & wet concrete or shotcrete. Aussie Skin 560G is an approved methane/VOC barrier.