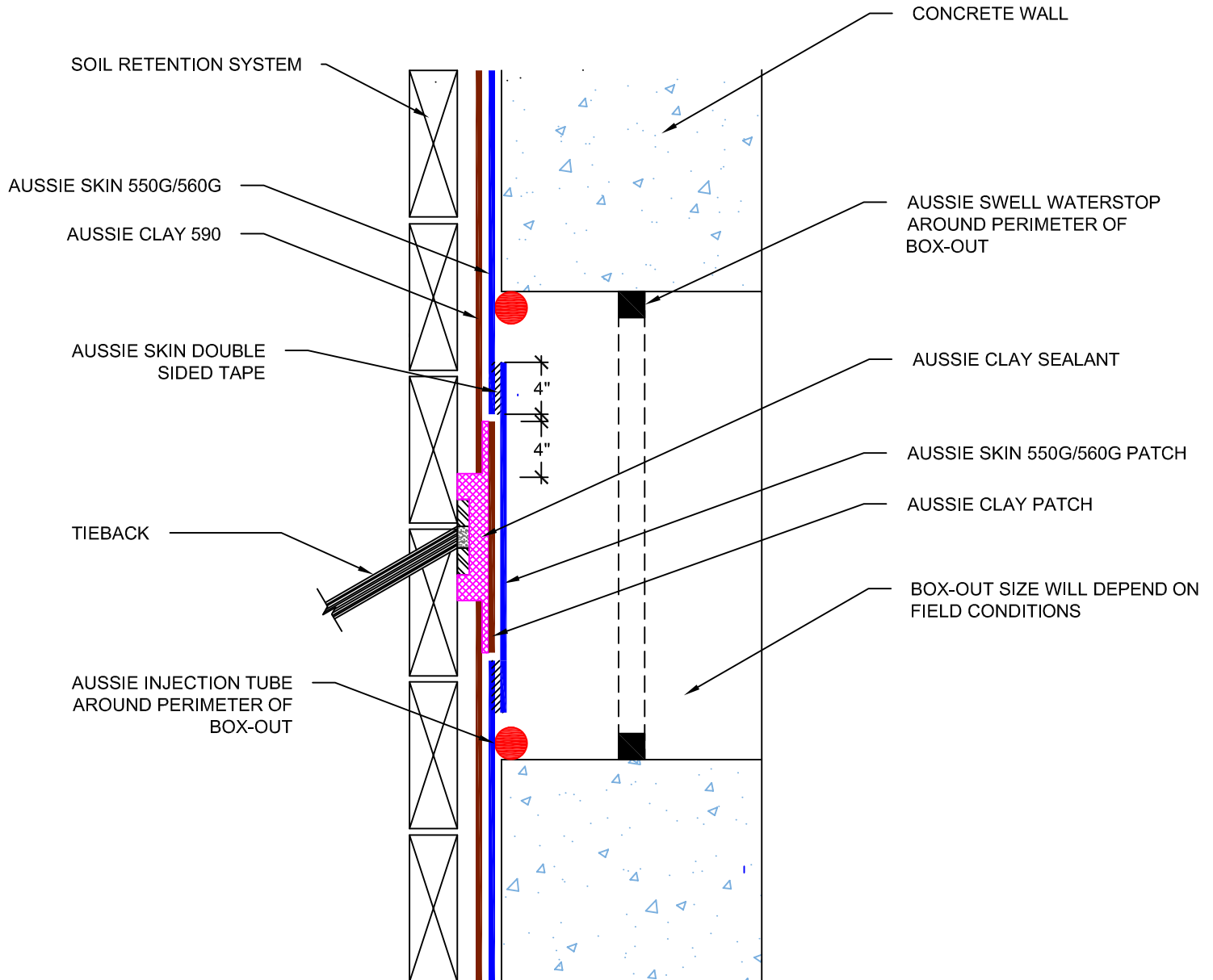


DETAIL #:  
**0550G\_0560G-1531AC**  
 Aussie Skin 550G/560G - 590

# Detensioned Tie-Back Box-out

## Aussie Clay Dual System



**NOTES:**

1. Aussie Clay & Aussie Clay PL are bentonite sheet membranes for waterproofing below-grade vertical and horizontal surfaces, including blindside and backfilled applications. Aussie Clay can be used with shotcrete or cast in place concrete in hydrostatic or non-hydrostatic conditions.
2. Aussie Skin 550G & 560G are Heavy Duty, Easy to Install, Puncture Resistant Sheet Waterproofing Membranes with added technologies creating excellent adhesion between membrane & wet concrete or shotcrete. Aussie Skin 560G is an approved methane/VOC barrier.