



**AVM**  
INDUSTRIES INC

# AVM WATERPROOFING SOLUTIONS





# BELOW GRADE WATERPROOFING SYSTEMS





## AVM Aussie Skin® 550G\*

Heavy Duty Below Grade, Blind-Side, Under-Slab Waterproofing Membrane

**APPROVED SHOT CRETE APPROVED**

AVM Aussie Skin 550G is a heavy duty, easy to install, puncture resistant, 50 mil HDPE sheet waterproofing membrane with added technologies creating excellent adhesion between the membrane and wet concrete or shot-crete. Once the concrete or shot-crete is cured, the membrane will become fully bonded to the concrete surfaces eliminating any potential migration of water between itself and the concrete surfaces to which it is bonded. Note: AVM Aussie Skin 550G is not suited to waterproof roofs or other internal wet areas.

### Where to use AVM Aussie Skin® 550G:

- Retaining Walls
- Basements
- Under-Slabs
- Mud-Slabs
- Tunnels
- Water Table

### AVM Aussie Skin® 550G may be applied:

- **Horizontally:** to smoothly prepared concrete substrates and/or compacted earth or crushed stone substrates.
- **Vertically:** to permanent formwork such as lagging. Concrete is then cast directly against the adhesive side of the membrane.
- **Application Method:** pre-applied, loosely laid.



## AVM Aussie Skin® 560G\*

Heavy Duty HDPE Below Grade Waterproofing and Methane Barrier Sheet Membrane

**APPROVED METHANE/VOC BARRIER APPROVED**

**APPROVED SHOT CRETE APPROVED**

AVM Aussie Skin 560G is a pre-applied, 80 mil thick, fully-bonded HDPE waterproofing membrane and LARR approved methane barrier. Aussie Skin 560G is 60% thicker than 550G and thus able to provide significantly greater puncture resistance with reduced VOC permeability. Aussie Skin 560G installs faster than any other LARR methane barrier on the market and is uniquely able to be exposed to the traditionally harmful effects of water, extreme weather, and sunlight.

### Where to use AVM Aussie Skin® 560G:

- Retaining Walls
- Basements
- Under-Slabs
- Mud-Slabs
- Tunnels
- Water Table

### AVM Aussie Skin® 560G may be applied:

- **Horizontally:** to smoothly prepared concrete substrates and/or compacted earth or crushed stone substrates
- **Vertically:** to permanent formwork such as lagging. Concrete or shot-crete is then cast directly against the adhesive side of the membrane
- **Application Method:** pre-applied, loosely laid.

LARR - Los Angeles Research Report. Approved as a waterproofing membrane, as a methane barrier and is approved for shot-crete applications when installed on lagging over plywood, drainboard or foam.

AVM Aussie Skin 560G is not suited to waterproof roofs or other internal wet areas.

**\*PATENT PENDING:** Some features of our product or assembly are protected under patent laws by one or more pending US patent(s).

## AVM Aussie Clay®\*

Heavy Duty Bentonite Composite Sheet Waterproofing Membrane

**APPROVED SHOT CRETE APPROVED**

AVM Aussie Clay is a heavy-duty high strength bentonite composite sheet waterproofing membrane consisting of needle punched woven and non-woven geotextile fabrics encapsulating a thick layer (1 lb/sq.ft./4.8 kg/M<sup>2</sup>) of active sodium bentonite between them. AVM Aussie Clay works by forming a low permeability membrane once it comes in contact with water. Once wetted, the sodium bentonite swells (up to 15 times its size when unconfined) to form a strong continuous membrane. As AVM Aussie Clay swells, it's also designed to self-seal and expand towards the concrete to fill-in small cracks and voids, as well as reduce the potential of lateral water migration.

- Available with plastic liner/vapor barrier
- Available with salt water/contaminated site enhancements

### Where to use AVM Aussie Clay®:

- Retaining walls
- Basements
- Under-slabs
- Mud-slabs





## **AVM Dual Layer System: Aussie Clay 590 & Aussie Skin 550G/560G**

**Heavy Duty Below Grade System that Utilizes Both an Active Bentonite Layer, and a Fully Bonded, High Strength HDPE Layer**

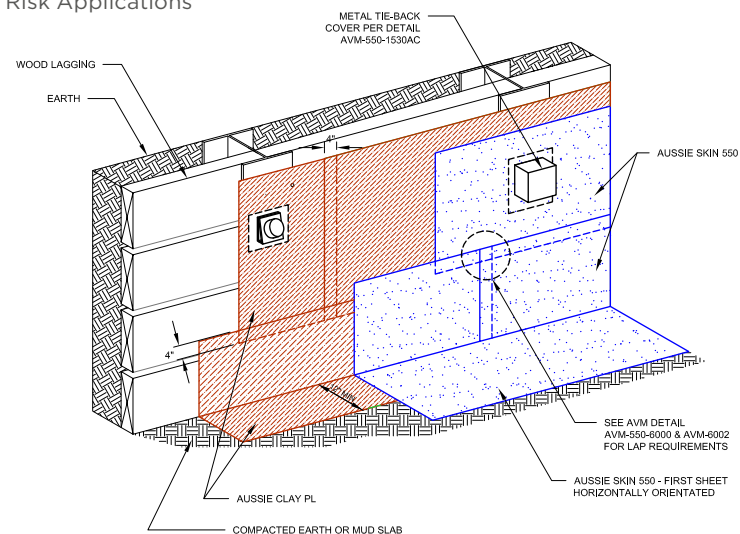
**US Patent No. 11,142,880**

Heavy Duty below grade system utilizing a self-sealing sodium bentonite waterproofing capable of swelling up to 15 times its original size and a fully bonded puncture resistant, 50 mil HDPE sheet. Once installed per AVM requirements this system provides the best in active waterproofing combined with a product that adhesively bonds to the concrete.

Shotcrete applications in the water table are notoriously difficult to make watertight. Shotcrete often requires hundreds of penetrations to secure the rebar cage and during installation the process of placing the shotcrete can be very aggressive. AVM industries is the only company in North America that offers both a fully bonded HDPE system and a sodium bentonite clay. These systems combine to create an extremely cost-effective solution to a very difficult application.

**Where to use the AVM Dual layer System with Aussie 590 and Aussie Skin 550G/560G:**

- Blindside Applications
- Behind Shotcrete Walls
- In Hydrostatic Conditions
- High Risk Applications





## AVM Aussie Skin® 560G\*

Heavy Duty HDPE Below Grade Waterproofing and Methane Barrier Sheet Membrane

APPROVED SHOT CRETE APPROVED

APPROVED LARR APPROVED METHANE/VOC BARRIER

The AVM Aussie Skin 560G is a pre-applied 2.0 mm thick waterproofing, methane and shot-crete approved heavy duty, easy to install, puncture resistant HDPE sheet membrane with added technologies creating excellent adhesion between the membrane and wet concrete or shot-crete. Once the concrete or shot-crete is cured, the membrane will become fully bonded to the concrete surfaces eliminating any potential migration of water between itself and the concrete surfaces to which it is bonded.

### Where to use AVM Aussie Skin® 560G:

- Retaining Walls
- Basements
- Under-Slabs
- Mud-Slabs
- Tunnels
- Water Table

LARR – Los Angeles Research Report. Approved as a waterproofing membrane, as a methane barrier and is approved for shot-crete applications when installed on lagging over plywood, drainboard or foam.

AVM Aussie Skin 560G is not suited to waterproof roofs or other internal wet areas.

**\*PATENT PENDING:** Some features of our product or assembly are protected under patent laws by one or more pending US patent(s).



## AVM Aussie Mate® 580-AL

UV Stable Heavy Duty 60 Mil Below Grade Bituminous Sheet Waterproofing Membrane and Methane Barrier with Aluminum Facer

US Patent No. 10,870,982

APPROVED LARR METHANE/VOC BARRIER

The AVM Aussie Mate 580-AL is a UV stable, heavy duty 60 mil below-grade bituminous sheet waterproofing membrane and methane barrier with aluminum facer. AVM Aussie Mate 580-AL exhibits excellent adhesion, elongation and recovery properties. Unlike other sheet membranes, Aussie Mate® 580-AL can be exposed to UV up to 180 days.

### Where to Use AVM Aussie Mate® 580-AL:

- **Retaining Walls:** As a waterproofing membrane and/or methane barrier on below-grade, concrete, block walls, basements, etc.
- **Under Slabs:** As a vapor barrier and/or methane barrier under concrete slabs.
- **Between-Slabs:** As a waterproofing membrane.

LARR #26138, for use as both a waterproofing membrane and/or methane barrier. This approval is based on tests and analysis in accordance with LADBS Acceptance Criteria L021 Below-Grade Exterior Damp-Proofing and Waterproofing Materials and L137 Methane Barrier Test Criteria.



## AVM Aussie Membrane 500/502\*

### Heavy Duty Below Grade Bituminous Waterproofing Membrane

The AVM Aussie Membrane 500/502 is a water-based rubber/bitumen liquid membrane modified with high performance rubberized polymers giving it excellent adhesion, which dries to a tough, black seamless flexible waterproof membrane. The AVM Aussie Membrane 500/502 has excellent long-term stability (maintains its properties over very long periods of time) unlike other below grade systems (including polyurethane based systems) that crack and become brittle as they age.

#### Where to Use AVM Aussie Membrane 500/502 as below grade waterproofing:

- **Retaining Walls:** waterproof below-grade, concrete, block walls, basements, etc.
- **In-between slab waterproofing:** to provide a sandwich membrane in-between two concrete slabs or over wood decks that will receive a topping slab. Also used as an under-tile membrane when a mud-bed or thick-set type assembly is required.

\*PATENT PENDING: Some features of our product or assembly are protected under patent laws by one or more pending US patent(s).



## AVM Aussie Membrane 520

### Heavy Duty Below Grade Polyurethane Waterproofing Membrane

The AVM Aussie Membrane 520 is a vapor-proof, gray liquid polyurethane, which dries to a tough, seamless flexible waterproof membrane. The Aussie Membrane 520 is a single component cold-applied polyurethane liquid. It exhibits excellent adhesion, strength, elongation and recovery properties.

#### Where to Use AVM Aussie Membrane 520:

- **Retaining Walls:** Waterproof below-grade, concrete, block walls, basements, etc.
- **In-between slab waterproofing:** To provide a sandwich membrane in-between two concrete slabs or over wood decks that will receive a topping slab. Also used as an under-tile membrane when an un-bonded mud-bed or thick-set type assembly is required.



## AVM Aussie Mate® 580-AL

### UV Stable Heavy Duty 60 Mil Below Grade Bituminous Sheet Waterproofing Membrane and Methane Barrier with Aluminum Facer

**US Patent No. 10,870,982**

**APPROVED LARR APPROVED METHANE/VOC BARRIER**

The AVM Aussie Mate 580-AL is a UV stable, heavy duty 60 mil below-grade bituminous sheet waterproofing membrane and methane barrier with aluminum facer. AVM Aussie Mate 580-AL exhibits excellent adhesion, elongation and recovery properties. Unlike other sheet membranes, Aussie Mate® 580-AL can be exposed to UV up to 180 days.

#### Where to Use AVM Aussie Mate® 580-AL:

- **Retaining Walls:** As a waterproofing membrane and/or methane barrier on below-grade, concrete, block walls, basements, etc.
- **Under Slabs:** As a vapor barrier and/or methane barrier under concrete slabs.
- **Between-slabs:** As a waterproofing membrane.





## AVM Aussie Grout 901, 902, 903

### Polyurethane Injection Grout Designed for Leak Remediation and Soil Stabilization

AVM Aussie Grout 901, 902, and 903 are advanced, single component phthalate free, zero VOC, high performance, hydrophobic, water activated polyurethane injection grout. The AVM Aussie Grout 901 is designed to cut off gushing water leaks with a high flow rate and/or high hydrostatic pressure. The AVM Aussie 902 Grout is a flexible polyurethane injection grout designed to cut off gushing water in low range dynamic cracks. The AVM Aussie Grout 903 Soil is a rigid polyurethane injection grout for stabilization of granular soils. All three of these products use the newest generation water activated single component resin with improved physical properties.

#### Where to Use AVM Aussie Grouts:

- For sealing large cracks and joints in concrete
- For sealing extremely thin cracks, fissures and joints
- For Stabilizing soil beneath concrete slabs, roadway etc.
- To Create a water cut-off curtain wall



## AVM Aussie Swell® Red The Red Waterstop

### AVM System 940: Aussie Swell® Red – Expandable Waterstop with a Minimum 75% Bentonite Content

AVM Aussie Swell Red is a hydrophilic strip waterstop that is a formulated blend of sodium bentonite & butyl rubber. Aussie Swell Red is an active waterstop which reacts with water to seal construction joints within concrete. The seal resists hydrostatic pressure, stopping the passage of water through the joint. Due to the sodium bentonite content, on contact with water, AVM Aussie Swell Red will swell (expand) within its confinement, self-injecting into localized voids & minor fissures. AVM Aussie Swell Red is an active waterstop designed to replace passive PVC/ rubber waterbars, without the need for pre-formed intersections, split forming or seam welding.

#### Where to Use AVM Aussie Swell Red:

- Concrete joints
- Pipe penetrations
- Wall-to-floor joints
- Irregular surfaces
- Can be applied to concrete, steel, PVC

#### Advantages

- Non-dimensional swell allows complete injection to surrounding voids
- Conformable – can be applied to a range of irregular substrates
- Resists in excess of 6 bar (60m) hydrostatic pressure
- Swells many times more than its dry volume to form impenetrable gel
- Simple butt jointing on site application
- Reproducible swell after wet-dry cycle
- Unaffected by freeze/thaw cycling

## AVM Aussie Tube®

### AVM System 950: Aussie Tube® – Injection Grouting System

The AVM Aussie Tube is an Injection Tubing System designed for injecting grout into concrete walls, cold-joints and other critical areas.

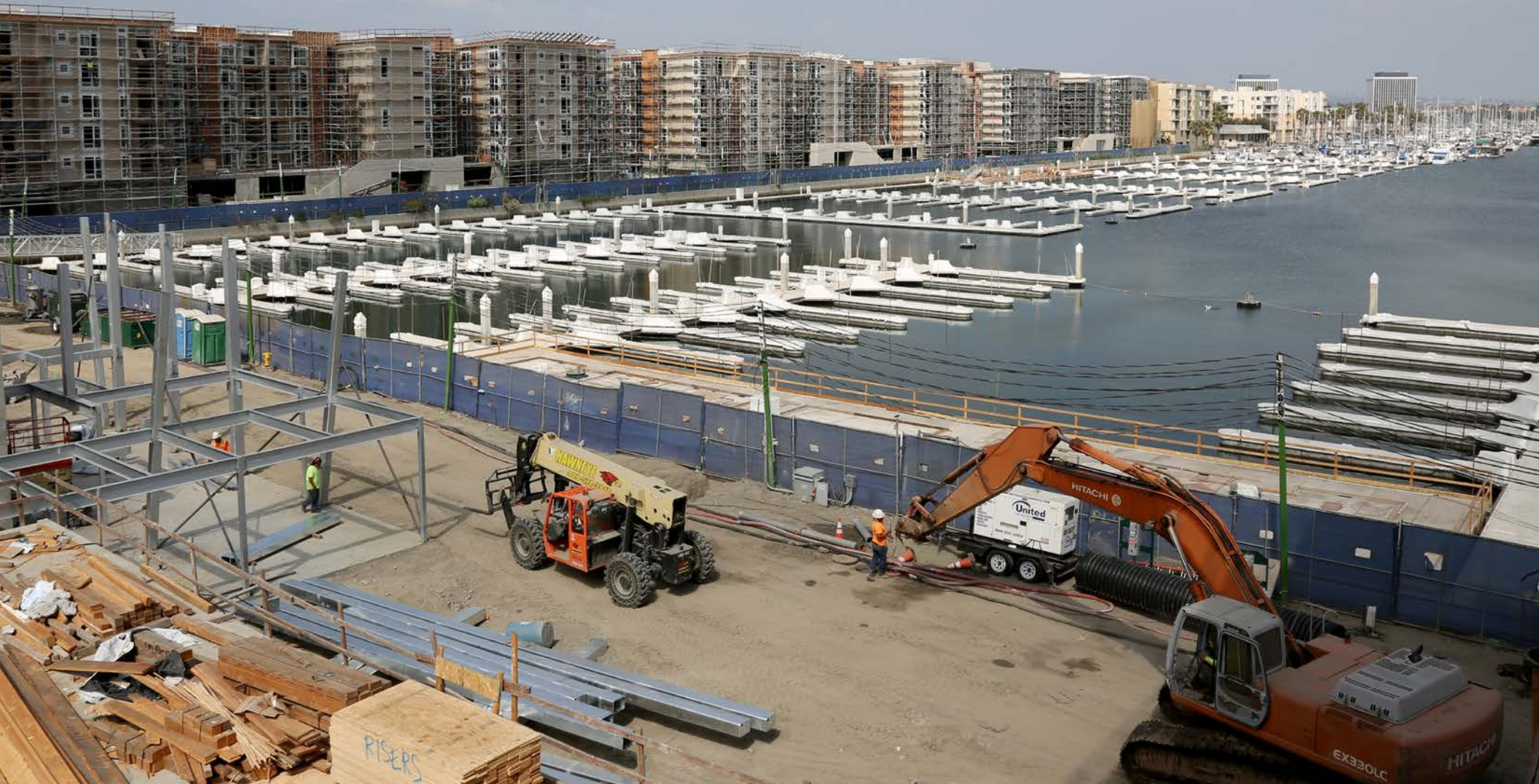
#### Where to Use AVM Aussie Tube®:

The Aussie Tube is typically installed at cold joints, walls with blind-side waterproofing systems, concrete joints, etc. The Aussie Tube is installed during the rebar installation phase and will remain embedded in the concrete in critical areas where grout will be injected at a later date.





# ABOVE GRADE WATERPROOFING SYSTEMS





## Aussie Membrane 500

### Heavy Duty Below Grade Bituminous Waterproofing Membrane

The AVM Aussie Membrane 500 is a water-based rubber/bitumen liquid membrane modified with high performance rubberized polymers giving it excellent adhesion, which dries to a tough, black seamless flexible waterproof membrane. The Aussie Membrane 500 is a single component thixotropic cold-applied bitumen paste that exhibits excellent elongation and recovery properties. The AVM Aussie Membrane 500 has excellent long-term stability (maintains its properties over very long periods of time) unlike other below grade systems (including polyurethane based systems) that crack and become brittle as they age.

#### Where to Use AVM Aussie Membrane 500:

- **Planters:** waterproof planters and other landscaping features.

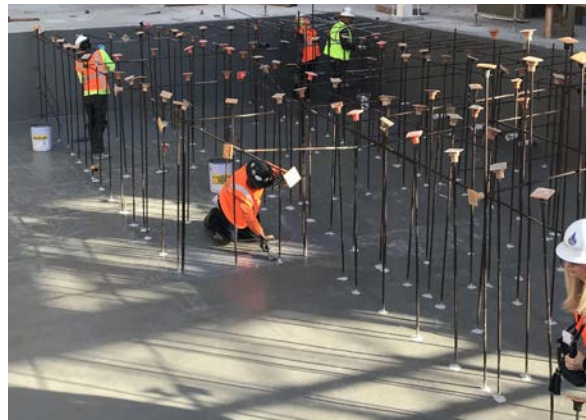
## AVM Aussie Membrane 520

### Heavy Duty Below Grade Polyurethane Waterproofing Membrane

The AVM Aussie Membrane 520 is a Vapor retarding, gray liquid polyurethane, which dries to a tough, seamless flexible waterproof membrane. The Aussie Membrane 520 is a single component cold-applied polyurethane liquid. It exhibits excellent adhesion, strength, elongation and recovery properties.

#### Where to Use AVM Aussie Membrane 520:

- **Planters:** Waterproof planters and other landscaping features.



## AVM Aussie Membrane 570 Hot Rubber

### Heavy Duty Hot Applied Rubberized Asphalt Waterproofing Membrane

AVM Aussie Membrane 570 – Hot Rubber, is a hot-applied asphalt-based composition membrane applied in a liquid state to form a continuous, seamless, tough, flexible, black, fully-adhered waterproofing membrane. Hot Rubber exhibits excellent elongation and recovery properties and maintains excellent long term stability.

#### Where to Use AVM Aussie Membrane 570:

- Over Portland cement structural concrete surfaces including precast and poured in place roofs
- Parking Structures
- Podium Decks
- Bridge Decks
- Green Roofs
- Under Roof Paver Systems
- Re-roofs
- etc.

AVM Aussie Membrane 570 – Hot Rubber may also be used over gypsum and wood surfaces. Do not install AVM Aussie Membrane 570 – Hot Rubber over structural light weight concrete without prior approval from AVM. Light weight insulating concrete is not an approved substrate.





## Elastofiberdeck 100

**Water Based Acrylic, Heavy Duty Pedestrian Roof and Walking Deck System**

APPROVED **ICC CLASS A ROOFING**

APPROVED **ICC 1 HOUR FIRE RATING**

The Elasto Fiberdeck® 100 system is a traffic bearing, roof and walking deck waterproofing system that provides exceptional protection against the elements and heavy pedestrian traffic. The Elasto Fiberdeck – 100 system has a Class A roofing classification and a 1 hour fire rating (when installed per ICC ESR-2125).

### Where to use AVM Elastofiberdeck:

- On new or existing concrete or plywood decks
- Balconies, walkways, stairs, courtyards, etc.
- Residential and commercial structures



## Forevercoat 100

**Maintenance Free, Water Based Acrylic, Heavy Duty Pedestrian Roof and Walking Deck System**

APPROVED **ICC CLASS A ROOFING**

APPROVED **ICC 1 HOUR FIRE RATING**

APPROVED **MAINTENANCE FREE**

The Forevercoat® 100 system is a traffic bearing, roof and walking deck waterproofing system with a “Maintenance Free” wear surface that provides exceptional protection against the elements and heavy pedestrian traffic. The Forevercoat® 100 system has a Class A roofing classification and a 1 hour fire rating (when installed per ICC ESR-2125).

### Where to Use AVM Forevercoat 100:

- On new or existing concrete or plywood decks
- Balconies, walkways, stairs, courtyards, etc.
- Residential and commercial structures





## TILE MEMBRANES

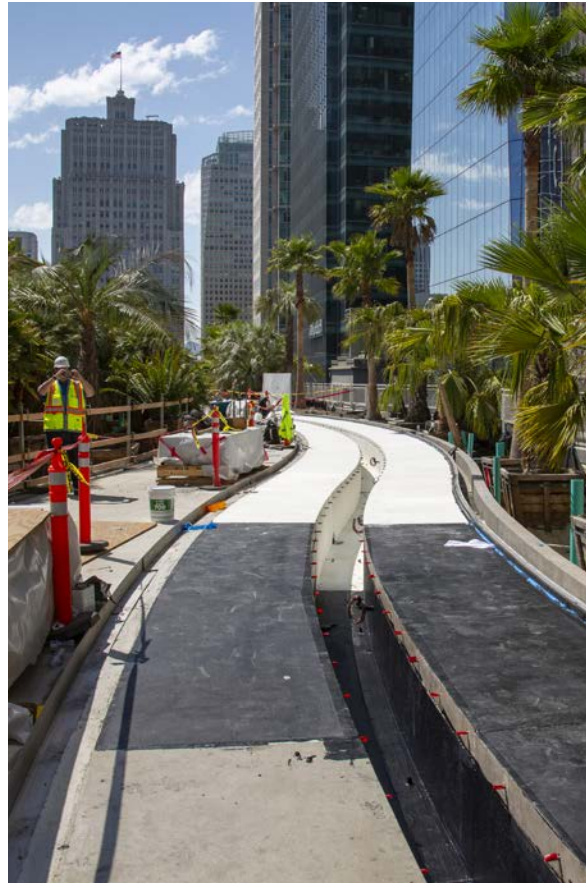
## AVM System 700 Waterproofing Membrane

### Under-Tile Waterproofing and Anti-Fracture Membrane

AVM System 700 is a monolithic waterproofing membrane 25 Mils min thickness, consisting of a heavy duty reinforced polyester fabric embedded in acrylic waterproofing paste. AVM System 700 is designed to be used as a waterproofing and anti-fracture membrane for substrates which will have tile, brick, slate, pavers or other similar finished surfaces installed directly over it. This system is also design to waterproof shower pans, counter-tops, etc.

#### Where to Use AVM System 700:

- On new or existing concrete or plywood decks
- Over backer boards, cement boards and other similar substrates
- As a primary membrane over living spaces
- As a shower pan liner for showers, bathrooms, kitchens, ponds, wet rooms, etc.



## DECK COATINGS

## AVM System 620/680SC

### Vehicular and Pedestrian Deck Coating System Low Odor, Low VOC Polyurethane

The AVM System 620/680SC, pedestrian and vehicular deck coating system is an easy to install, liquid applied, abrasion resistant, low VOC, low odor Polyurethane waterproof system suitable for surfaces subject to pedestrian and vehicular traffic. The AVM System 620/680SC is a monolithic chemical resistant vehicular deck coating system that can withstand heavy thermal cycling. This elastomeric system is designed to expand and contract with normal structural movements and protect the surfaces against spalling, freeze/thaw damage, and chemicals commonly encountered on pedestrian and vehicular traffic decks. Installed and maintained properly, the AVM System 620/680SC will provide many years of service.

#### Where to Use AVM 620/680SC:

- On new or existing concrete or plywood decks
- Parking Structures
- Helicopter Pads
- Other concrete structures requiring a heavy-duty polyurethane deck coating





# 3 LEVELS OF PROTECTION BY AVM

Our confidence in the high quality of our design, engineering, production and product performance is limitless. That's why we offer 3 levels of warranty and you decide which option is the most convenient for you.

- Material Warranty
- System Warranty
- Aussie Guard NDL Warranty

Not sure which option to select? Please contact us - we are more than happy to discuss and help you to select the best solution for you.

**(888) 414-1041**

