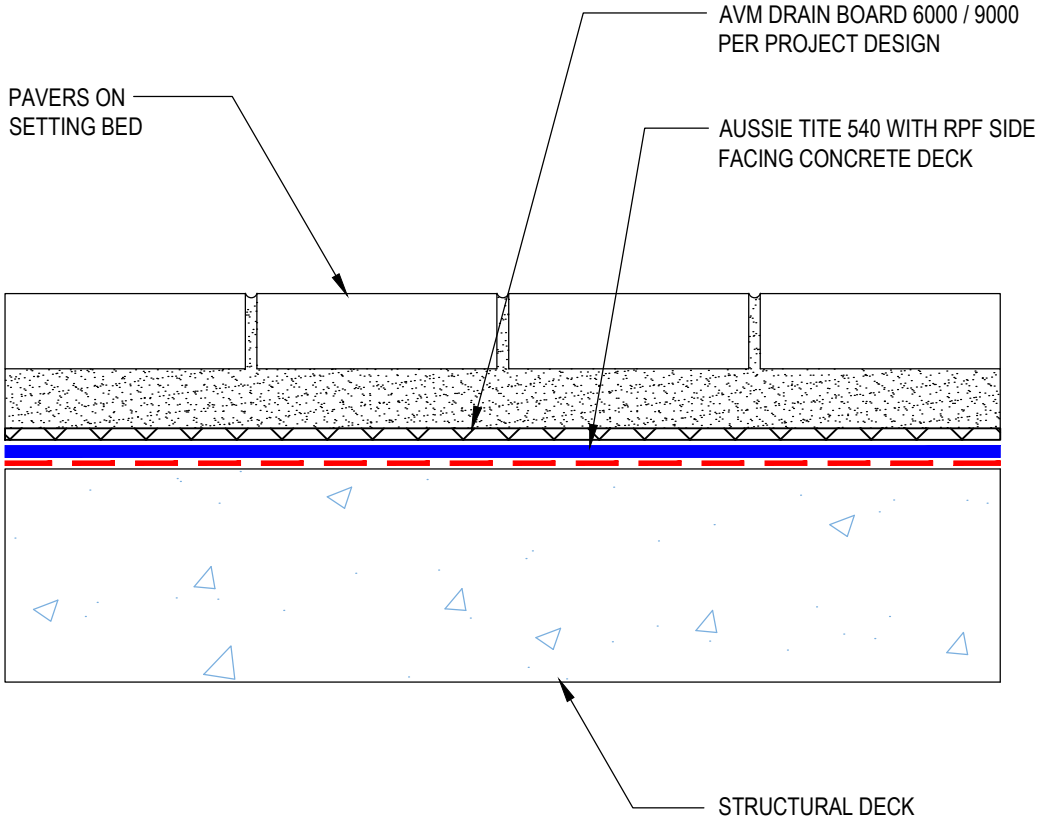


DETAIL #:  
0540-1100  
Aussie Tite 540

# Pavers on Setting Bed



## AVM AUSSIE TITE 540

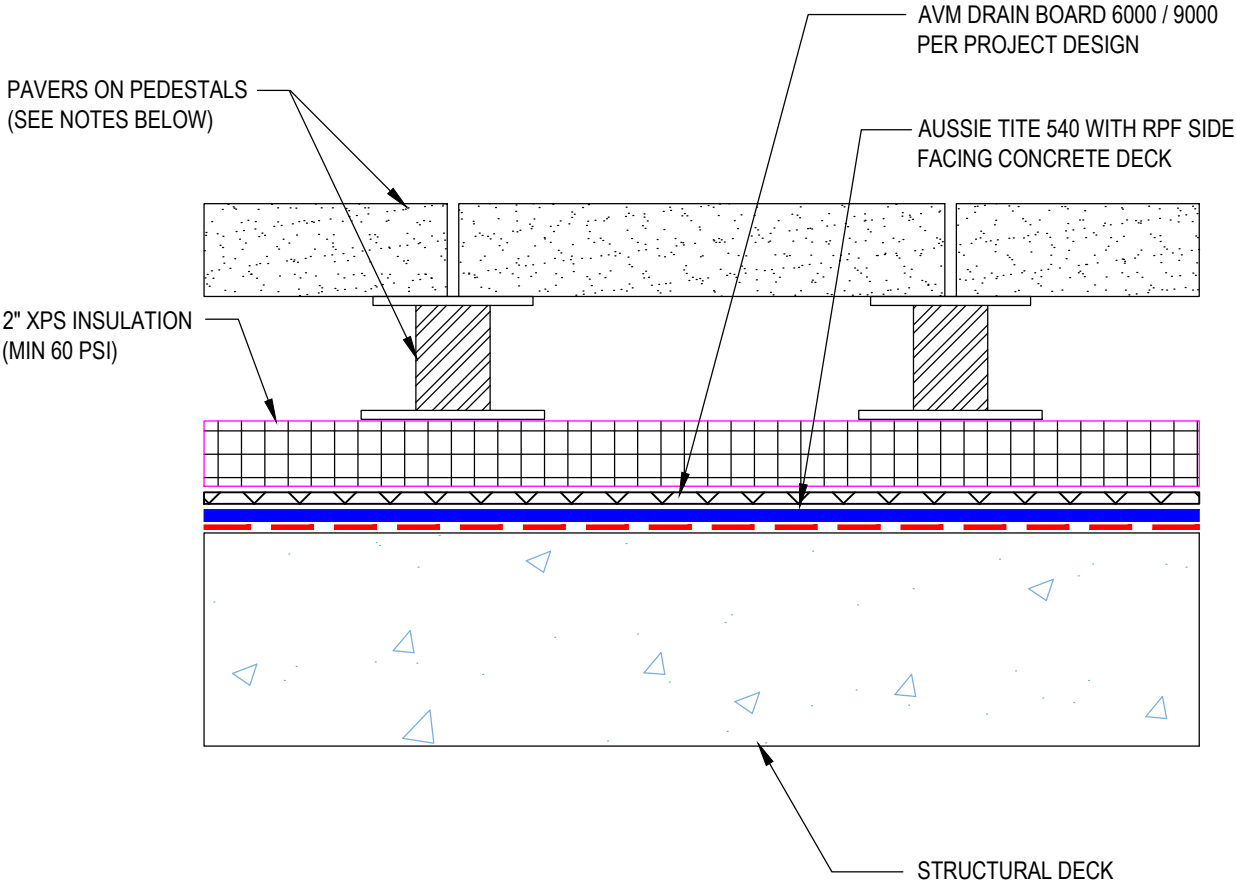


DETAIL #:  
0540-1102  
Aussie Tite 540

# Pavers on Pedestals (Pedestrian Traffic Areas)



## AVM AUSSIE TITE 540



**Notes:**

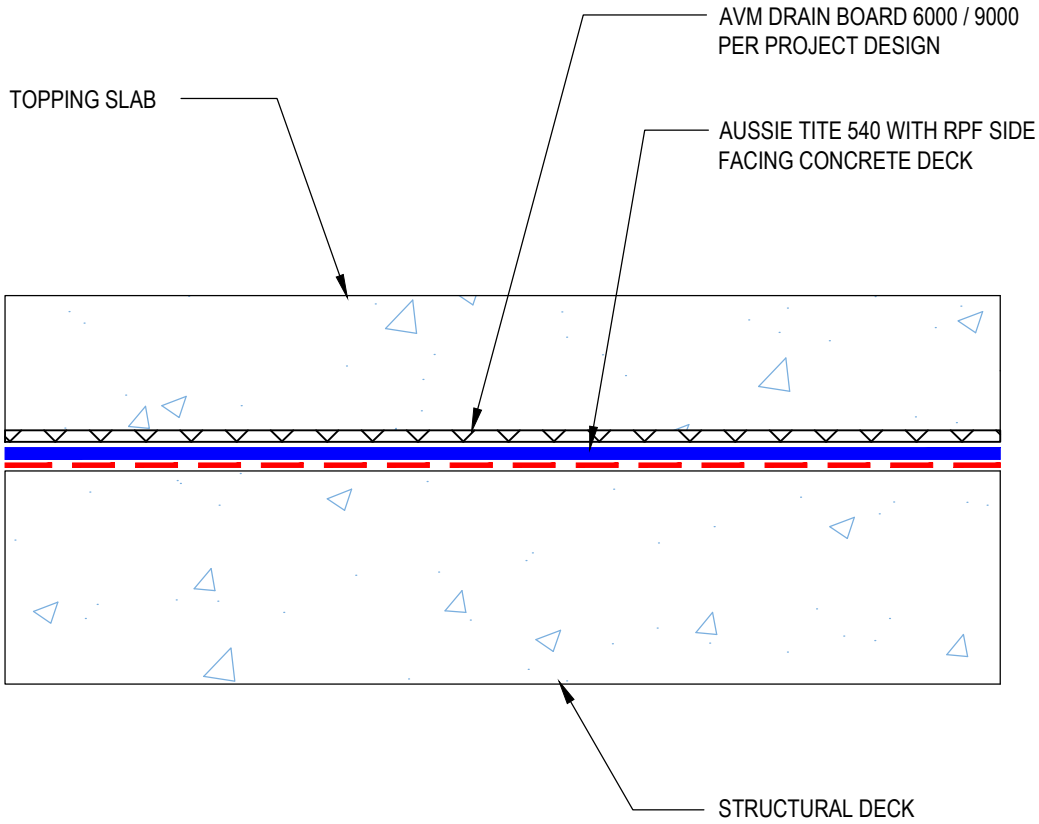
- 1. This assembly is designed for 24" x 24" x 2" pavers. Please contact AVM for instructions / approval if paver size differs.

DETAIL #:  
0540-1110  
Aussie Tite 540

# Split Slab



## AVM AUSSIE TITE 540

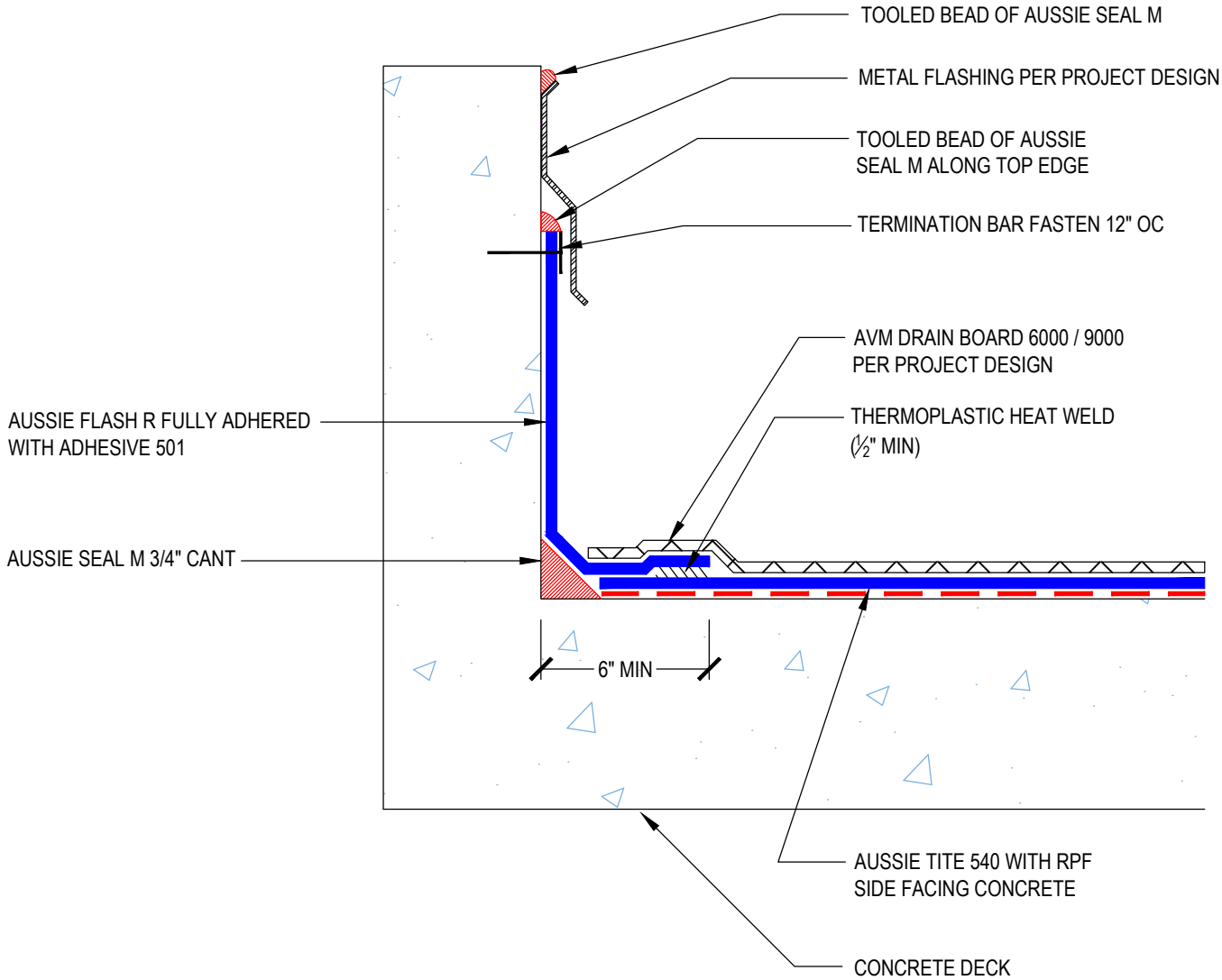


DETAIL #:  
**0540-1200**  
 Aussie Tite 540

# Deck to Wall Transition with Flashing



## AVM AUSSIE TITE 540

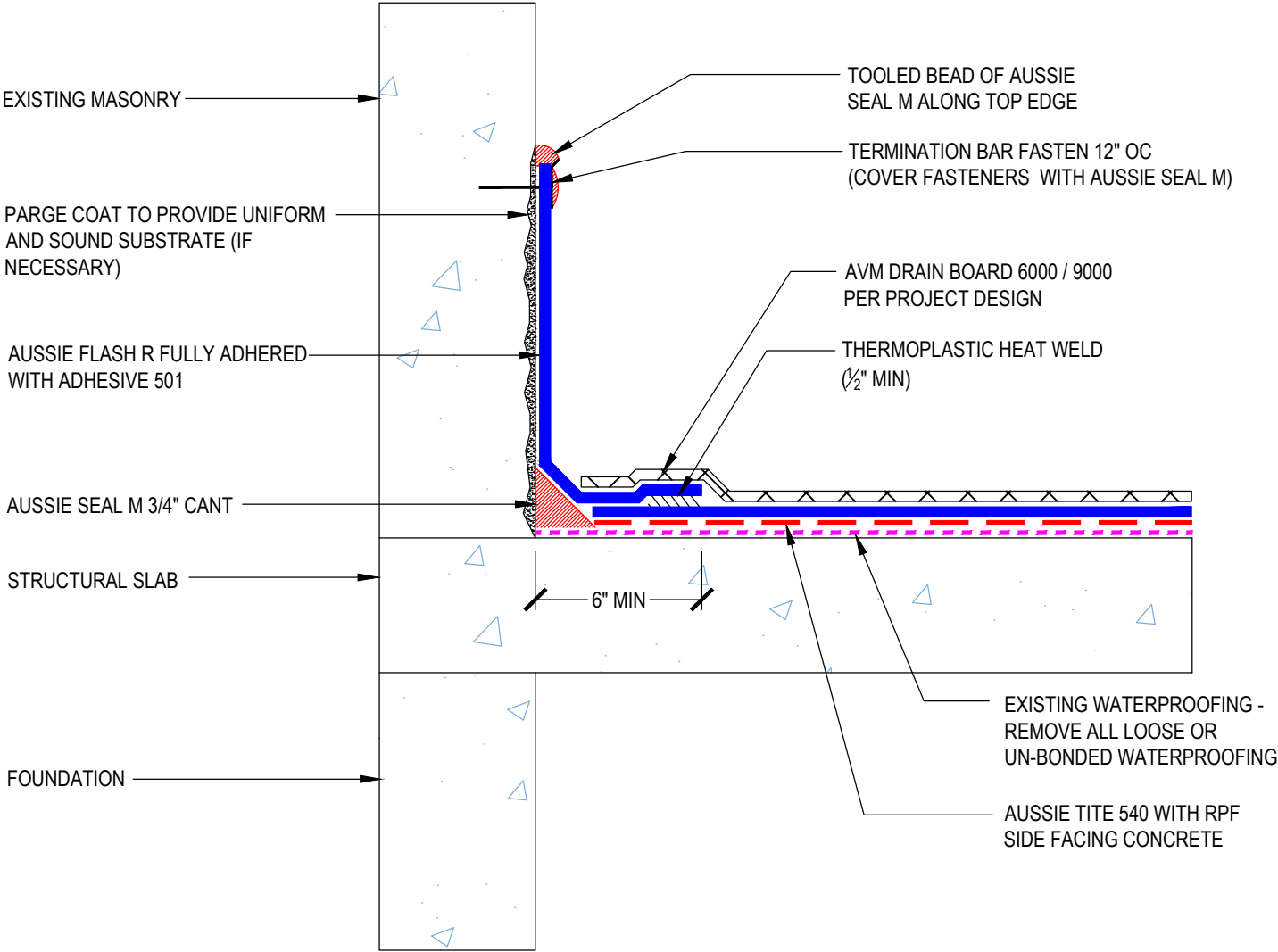


DETAIL #:  
**0540-1201**  
 Aussie Tite 540

# Deck to Wall Transition Over Existing Waterproofing - Option 1



## AVM AUSSIE TITE 540

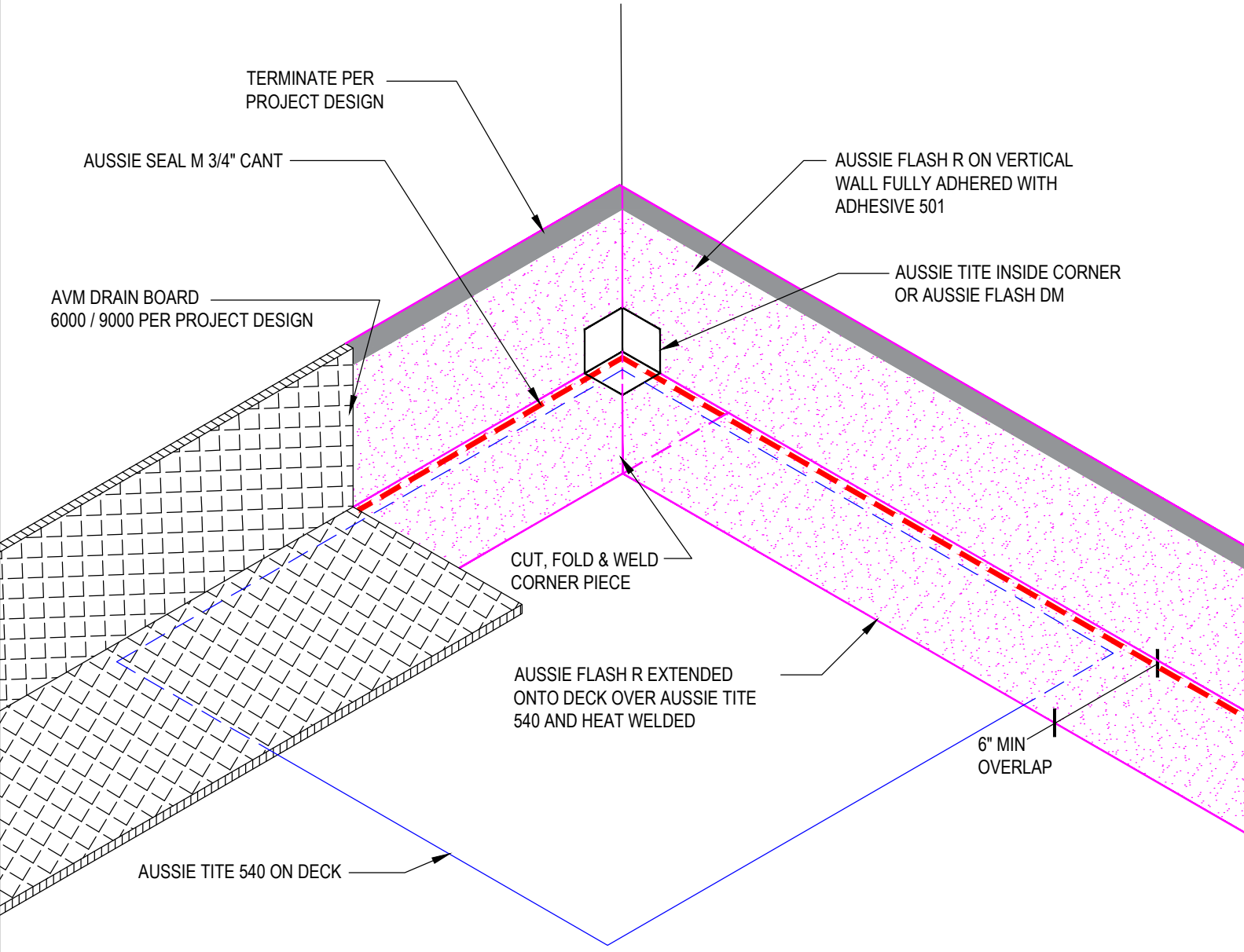


DETAIL #:  
0540-1210  
Aussie Tite 540

# Outside Corner



## AVM AUSSIE TITE 540

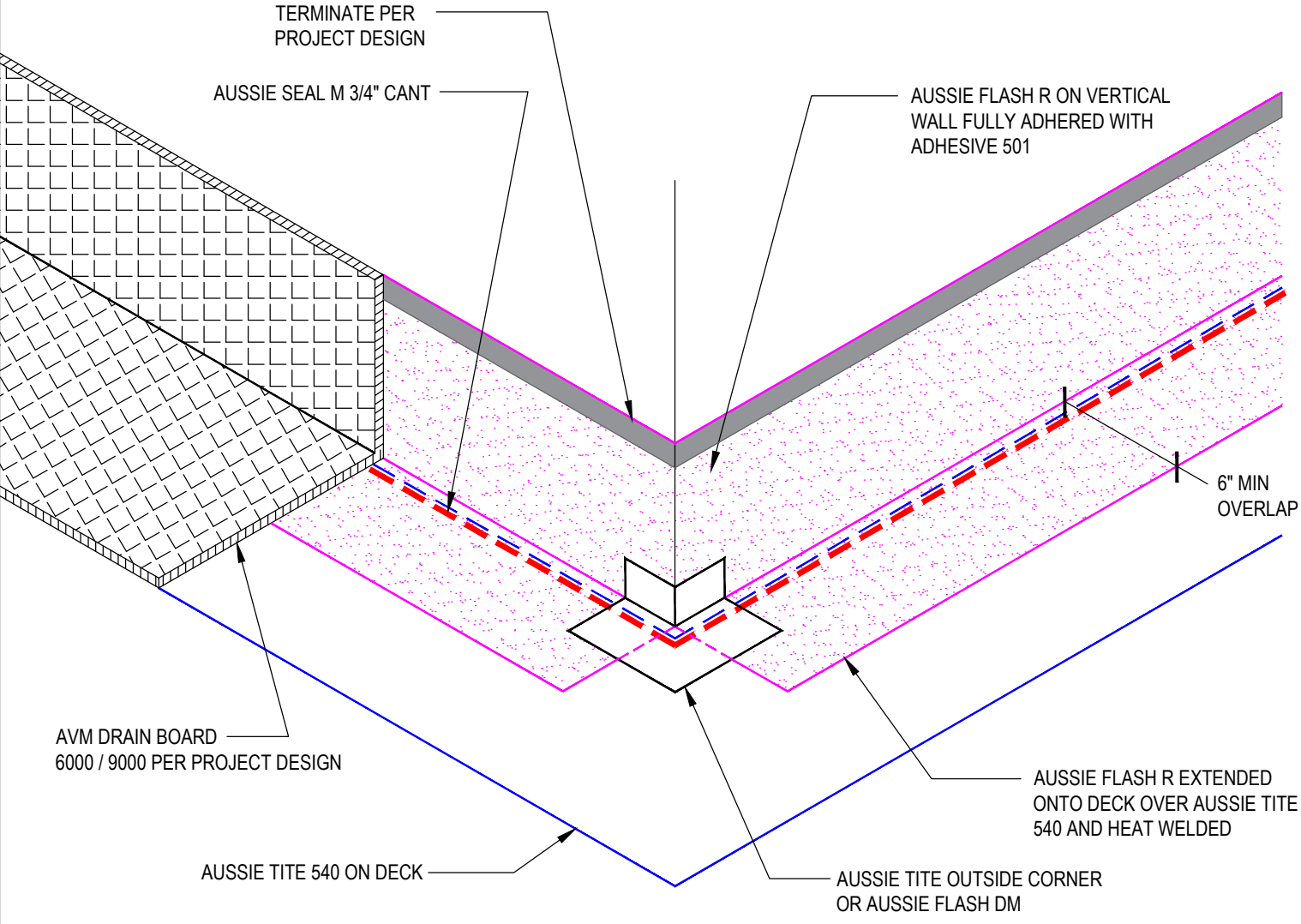


DETAIL #:  
0540-1220  
Aussie Tite 540

# Outside Corner



## AVM AUSSIE TITE 540

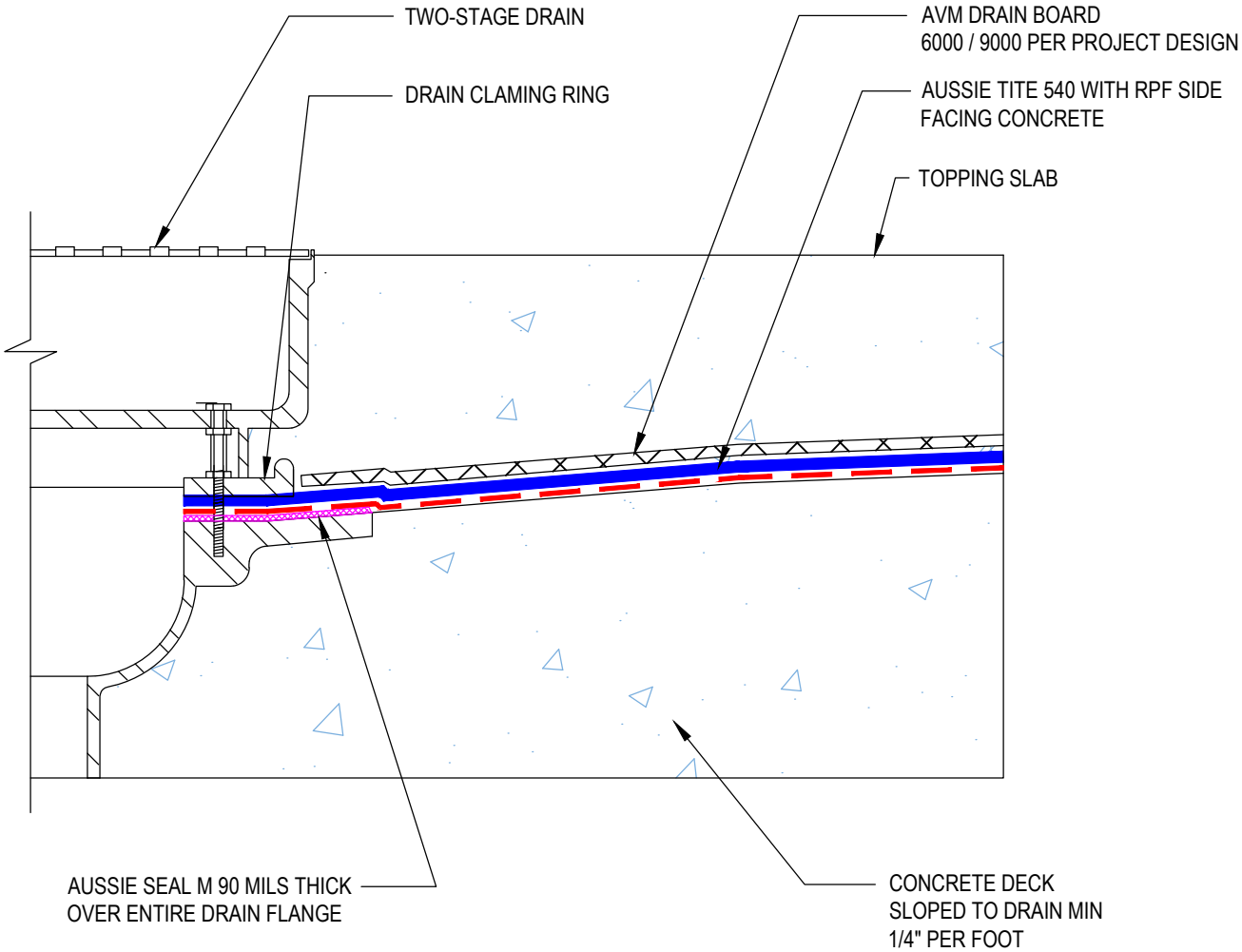


DETAIL #:  
0540-1400  
Aussie Tite 540

# Two-Stage Drain in Split Slab



## AVM AUSSIE TITE 540



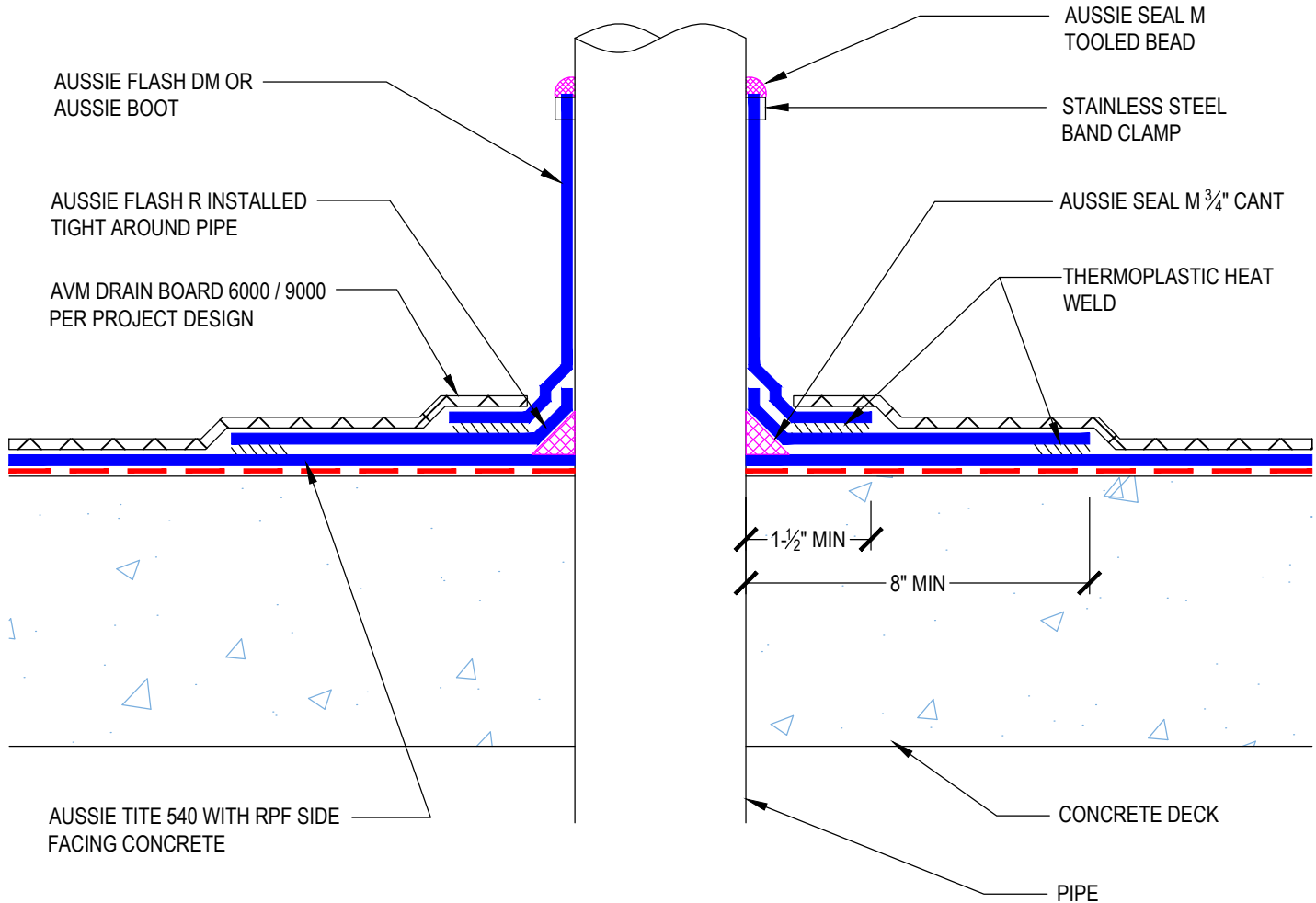


DETAIL #:  
**0540-1460**  
 Aussie Tite 540

# Typical Pipe Penetration



## AVM AUSSIE TITE 540

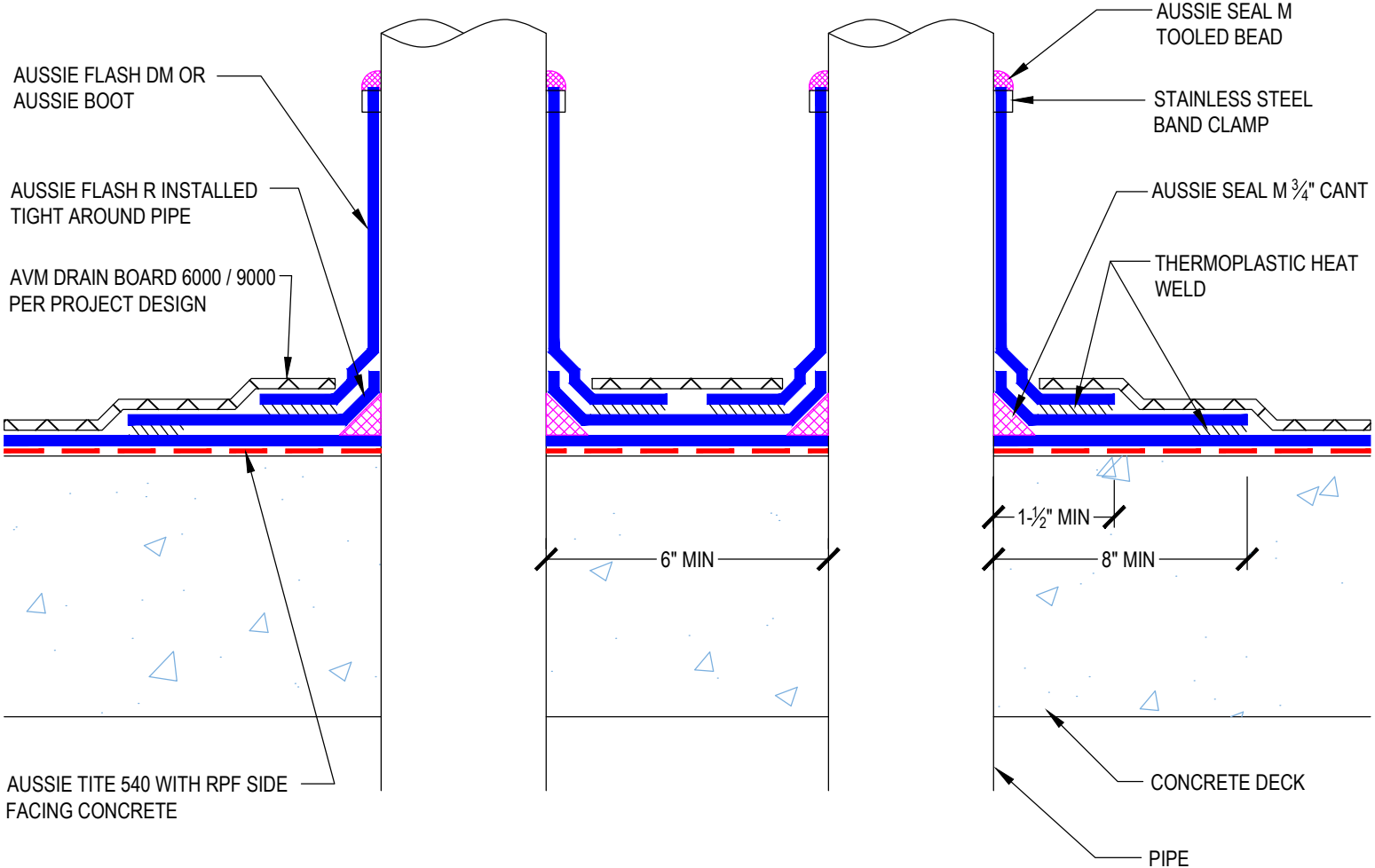


DETAIL #:  
0540-1462  
Aussie Tite 540

# Multiple Pipe Penetration



## AVM AUSSIE TITE 540

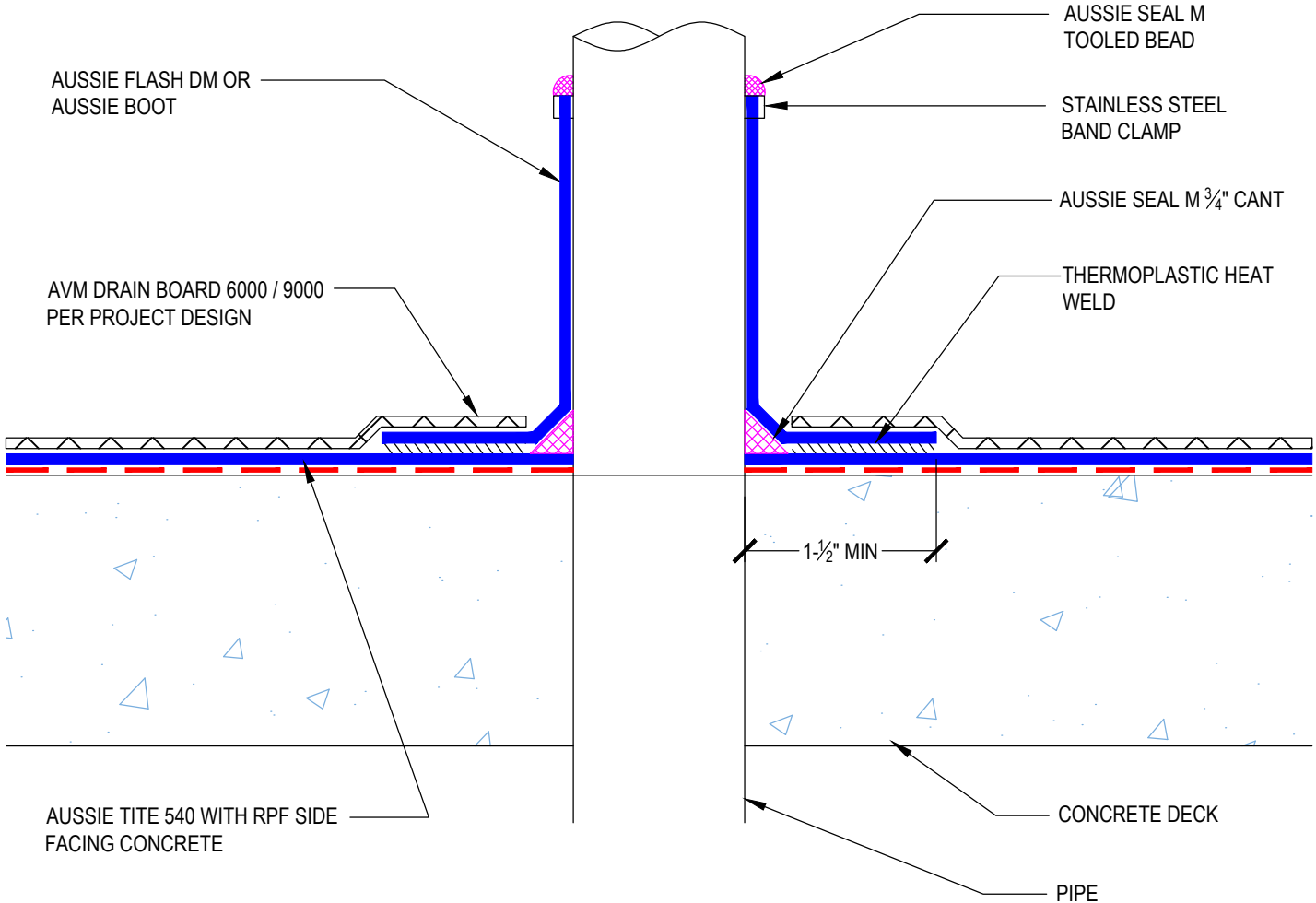


DETAIL #:  
0540-1465  
Aussie Tite 540

# Pipe Penetration



## AVM AUSSIE TITE 540

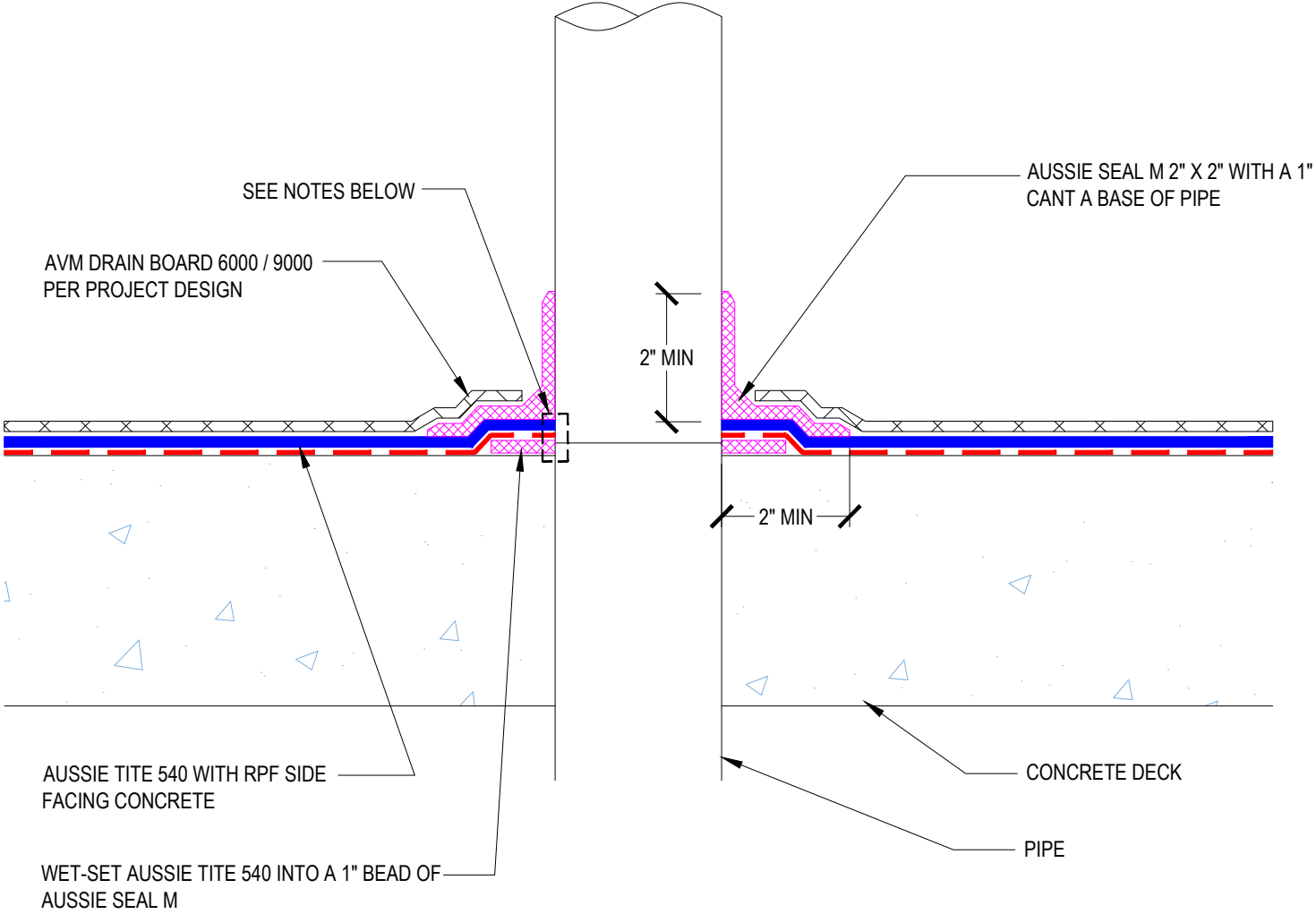


DETAIL #:  
0540-1466  
Aussie Tite 540

# Pipe Penetration with Aussie Seal M



## AVM AUSSIE TITE 540



### Notes:

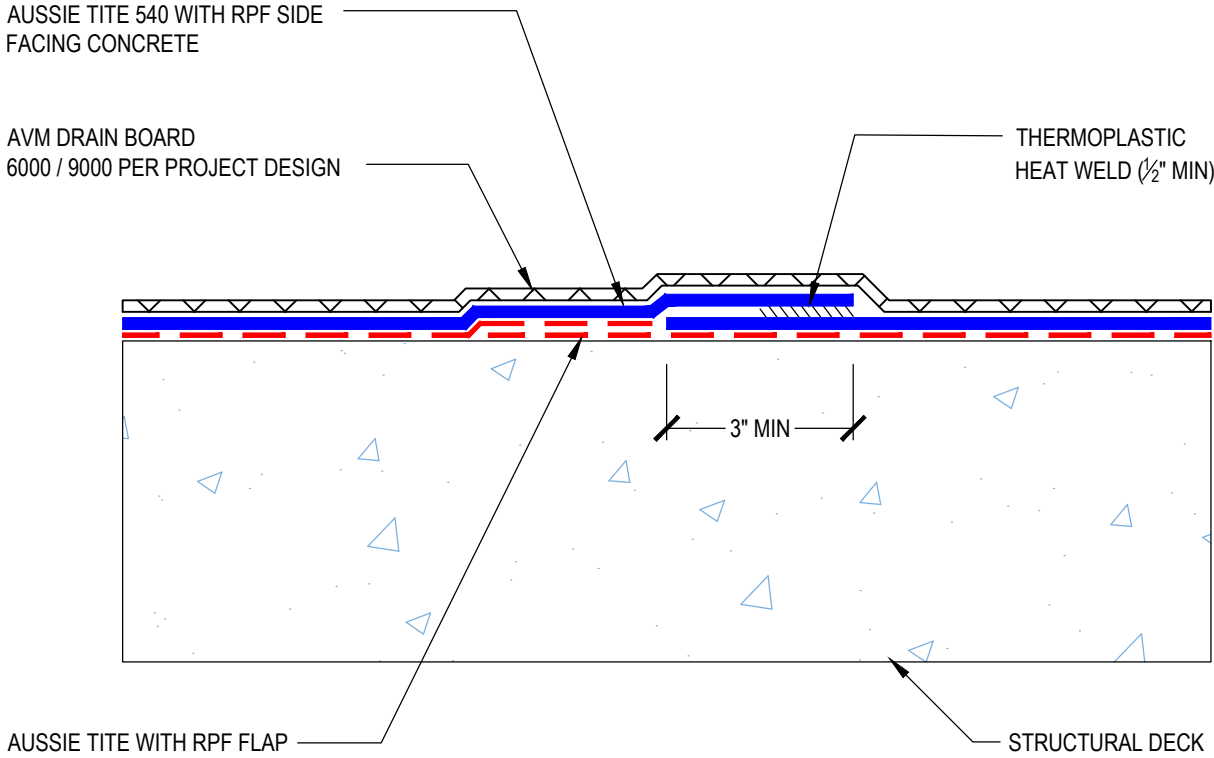
- 1. Aussie Tite 540 must be installed with a gap less than 1/4" between the membrane and pipe or a target sheet may be required. Please consult AVM for additional details if required

DETAIL #:  
0540-1500  
Aussie Tite 540

# Typical Welded Overlap



## AVM AUSSIE TITE 540



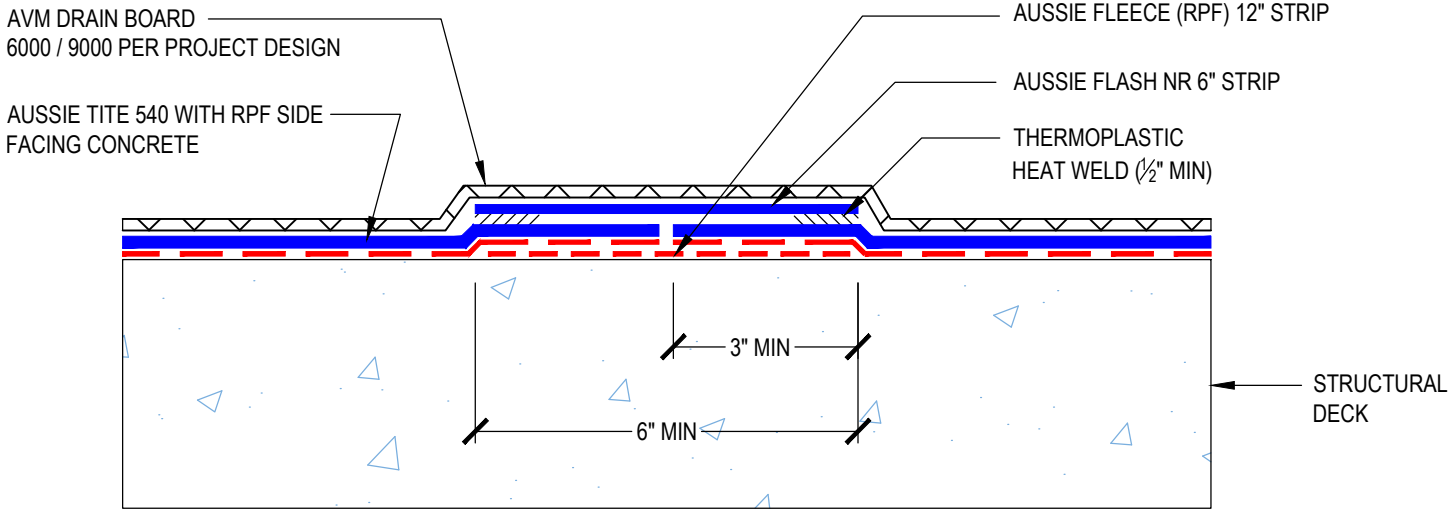
DETAIL #:  
 0540-1505  
 Aussie Tite 540

# Butt End Overlap Welded Overlap

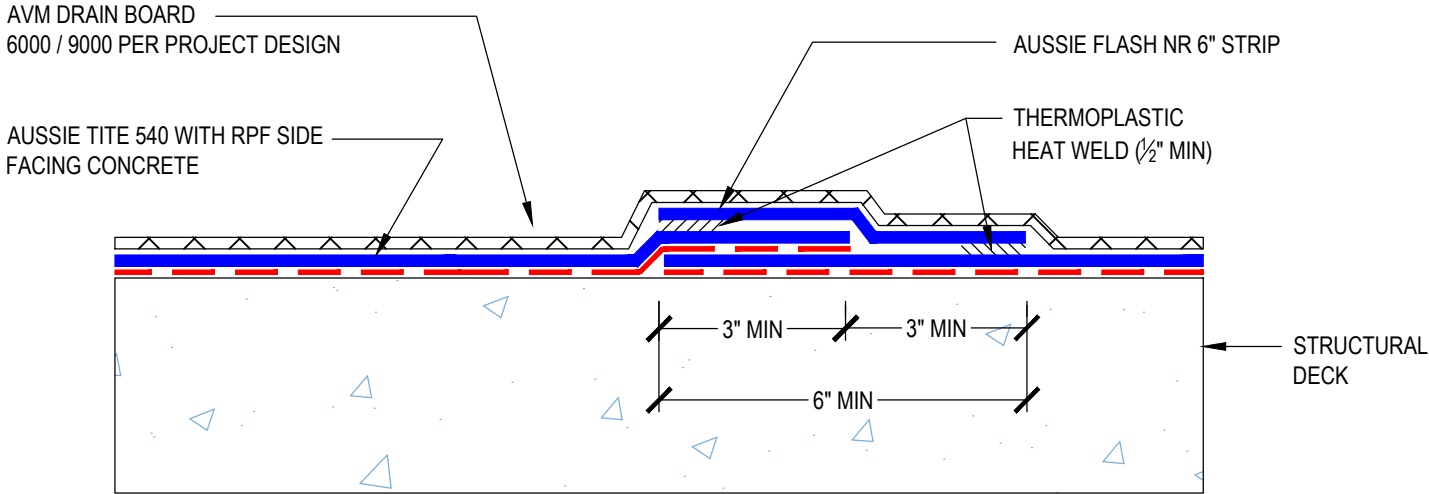


## AVM AUSSIE TITE 540

### OPTION 1



### OPTION 2



DETAIL #:  
0540-1510  
Aussie Tite 540

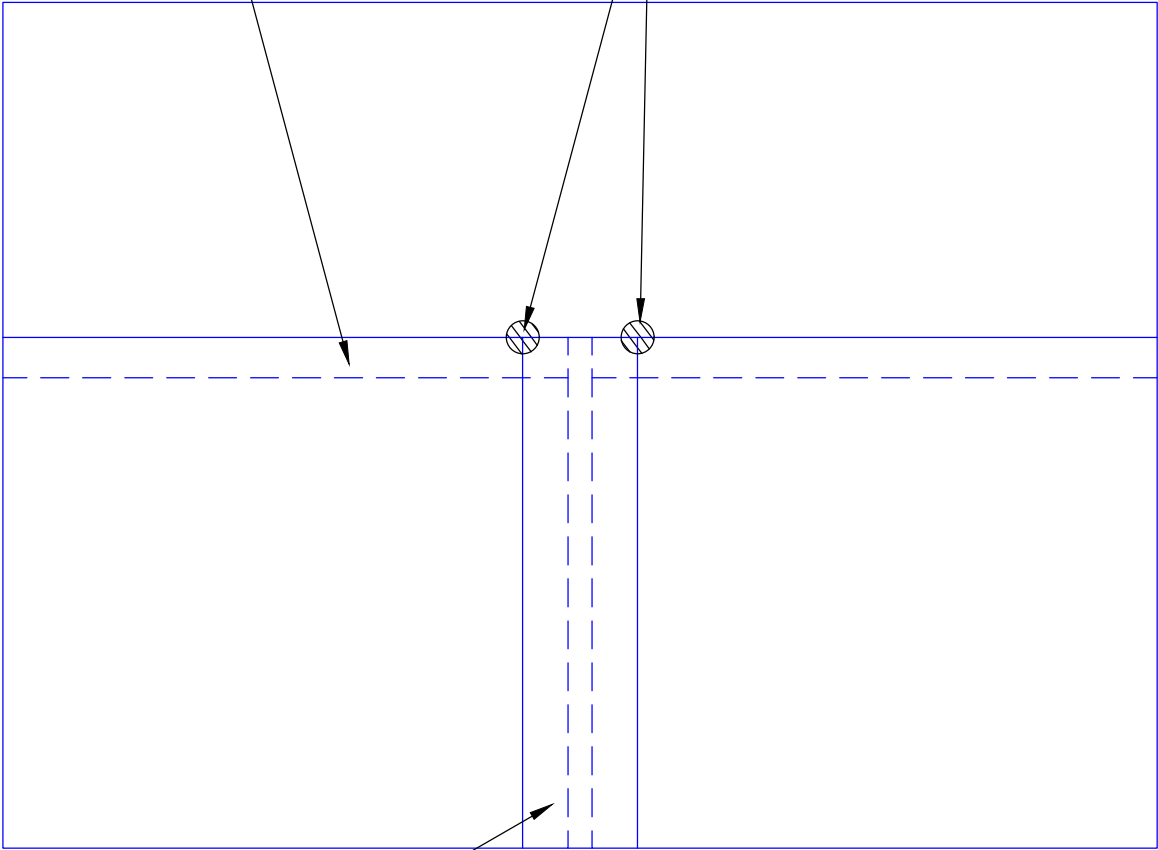
# Butt End Overlap Welded Overlap with T-Patch



**AVM AUSSIE TITE 540**

TYPICAL WELDED OVERLAP  
(SEE DETAIL 0540-1500)

4" DIAMETER T-PATCH AT ALL  
LAP INTERSECTIONS



TYPICAL BUTT END OVERLAP  
(SEE DETAIL 0540-1505)