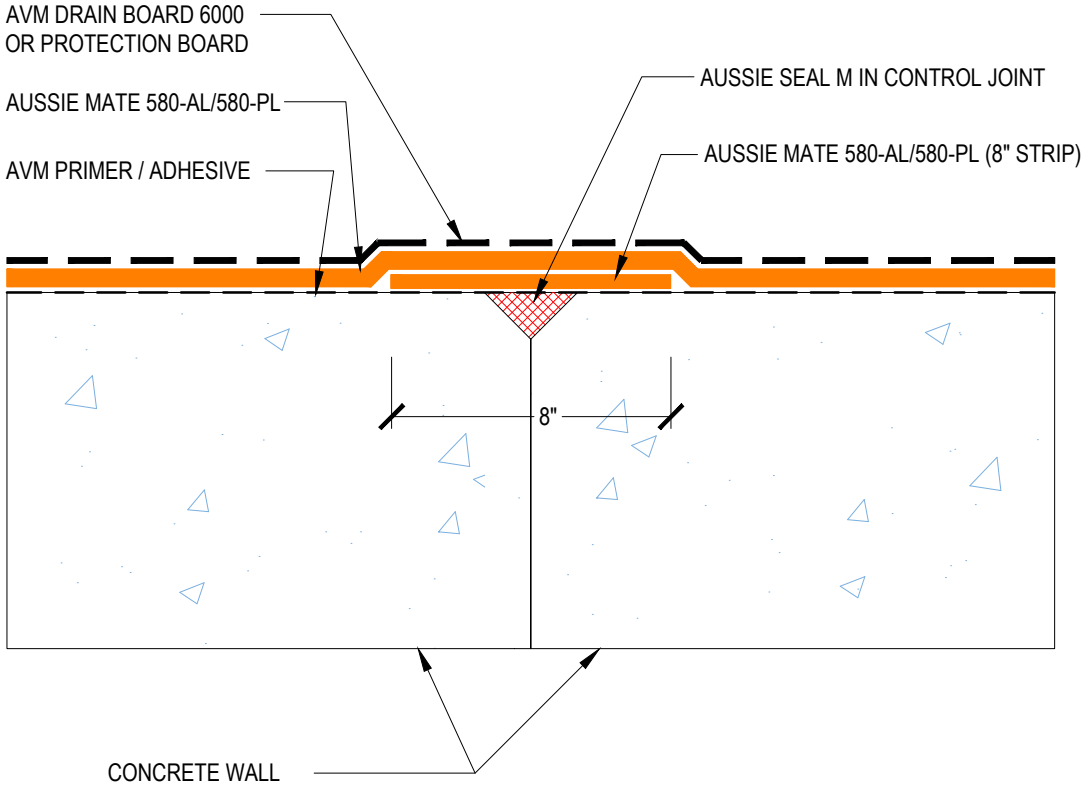


DETAIL #:
0580-AL_580-PL-1200
System:
Aussie Mate 580-AL/580-PL

Control Joint Detailing

AUSSIE MATE 580-AL/580-PL



PLAN VIEW

Notes:

- 1. Aussie Mate 580-AL is an LARR approved Waterproofing membrane and Methane Barrier.
- 2. Aussie Mate 580-AL is a heavy duty bituminous sheet membrane with aluminum protection layer for Below-Grade waterproofing applications that is available in a 60-mil or 80-mil thickness. Aussie Mate 580-AL may also be used as a methane and/or vapor barrier under horizontal slabs on grade.
- 3. Aussie Mate 580-PL is a 60-mil heavy duty bituminous sheet waterproofing membrane with a poly liner for below-grade waterproofing applications. Aussie Mate 580-PL cannot be used as a methane/vapor barrier in slab on grade applications.
- 4. **UV Exposure Limits:** Aussie Mate 580-AL - Up to 180 days. Aussie Mate 580-PL - Up to 30 days
- 5. See "Aussie Mate 580 Installation Instructions" for system requirements.