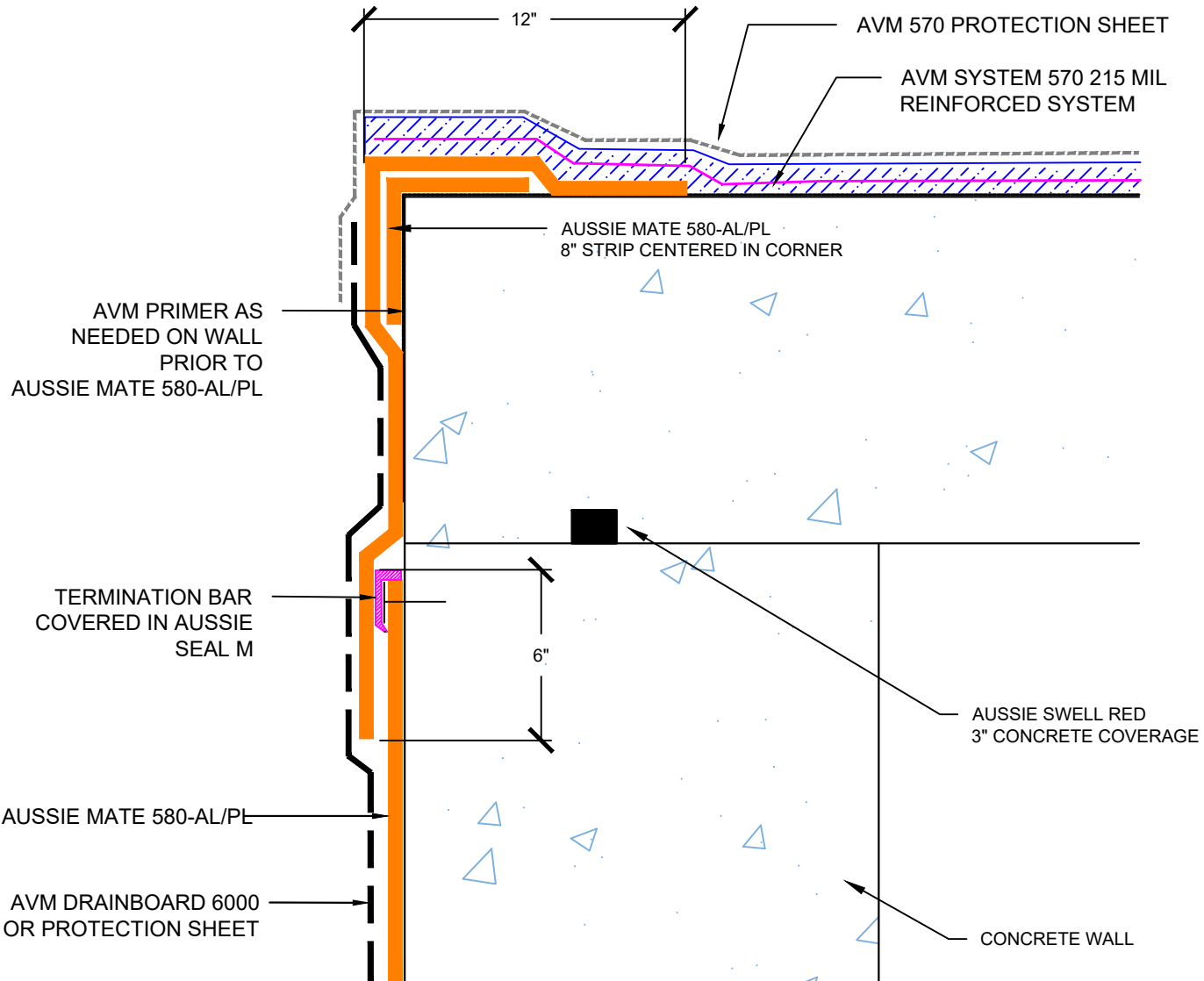


DETAIL #:  
0580-AL-5004  
AVM System 570/580-AL/PL

# Horizontal Transition to Aussie Mate 580-AL/PL AVM System 570 - Hot Rubber



### Notes:

1. Aussie Membrane 570 is a Hot Rubber(Hot-Applied Asphalt-Based Composition Membrane) for Between-Slabs, Planters, Roof-Gardens and similar type Waterproofing.
2. Typical membrane is 215 mils thick with fabric reinforcement. If specified differently, contact AVM for approval.
3. Contact AVM if no drain board or protection board is specified.
4. Remove/grind/repair as necessary any protrusions, sharp edges, etc that may puncture or damage the membrane.
5. Deck-to-Wall corners must be waterproofed as shown on AVM's Details.
6. Substrates must be sloped to drains and/or edges before membrane installation. (Min 1/4" per foot) Substrates must have sufficient drains and proper drainage systems to effectively evacuate excessive water.