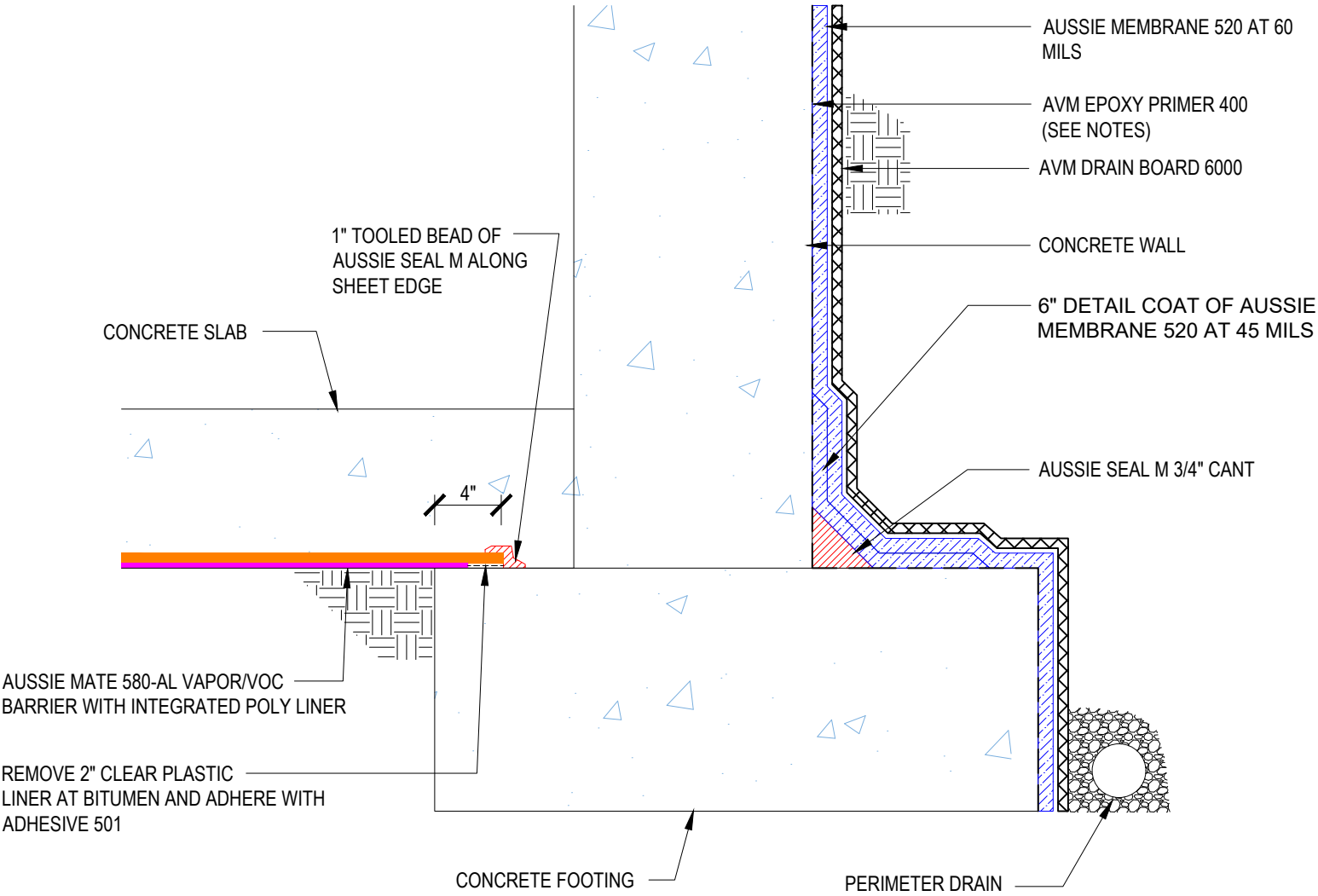


DETAIL #:
 0520-0002
 System:
 Aussie Mambrane 520

Backfilled Wall with Vapor Barrier Under Slab



AUSSIE MEMBRANE 520



Notes:

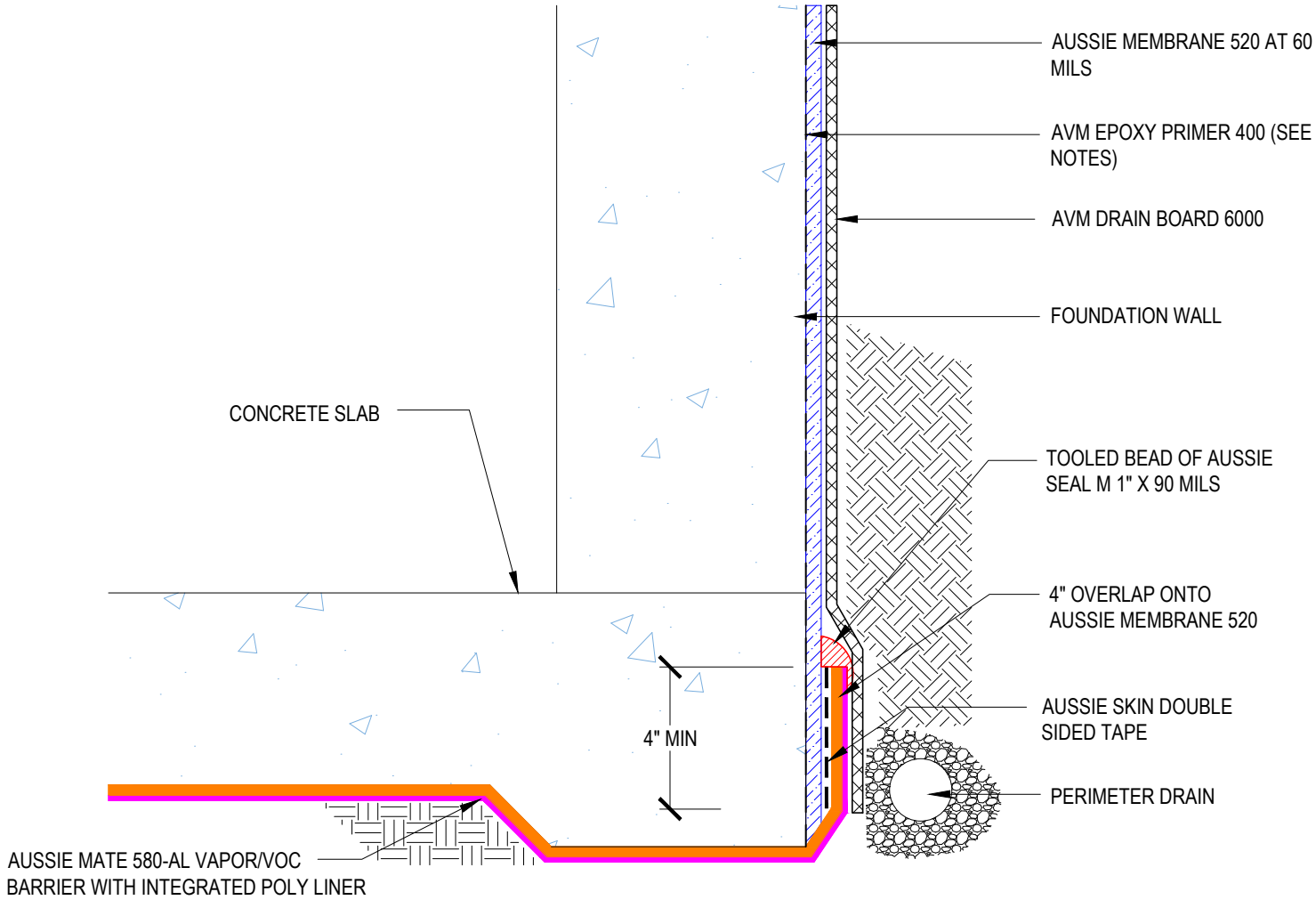
1. Aussie Membrane 520 is a Polyurethane liquid (Roller or Brush Applied) for Below-Grade, Between-Slab, Planters, Roof-Gardens and similar type Waterproofing.
2. Epoxy primer may be required if proper adhesion is not achieved - see installation instructions for further information
3. Contact AVM if no drain board or protection board is specified

DETAIL #:
 0520-0004
 System:
 Aussie Membrane 520

Transition to Vapor Barrier Flush Footing



AUSSIE MEMBRANE 520



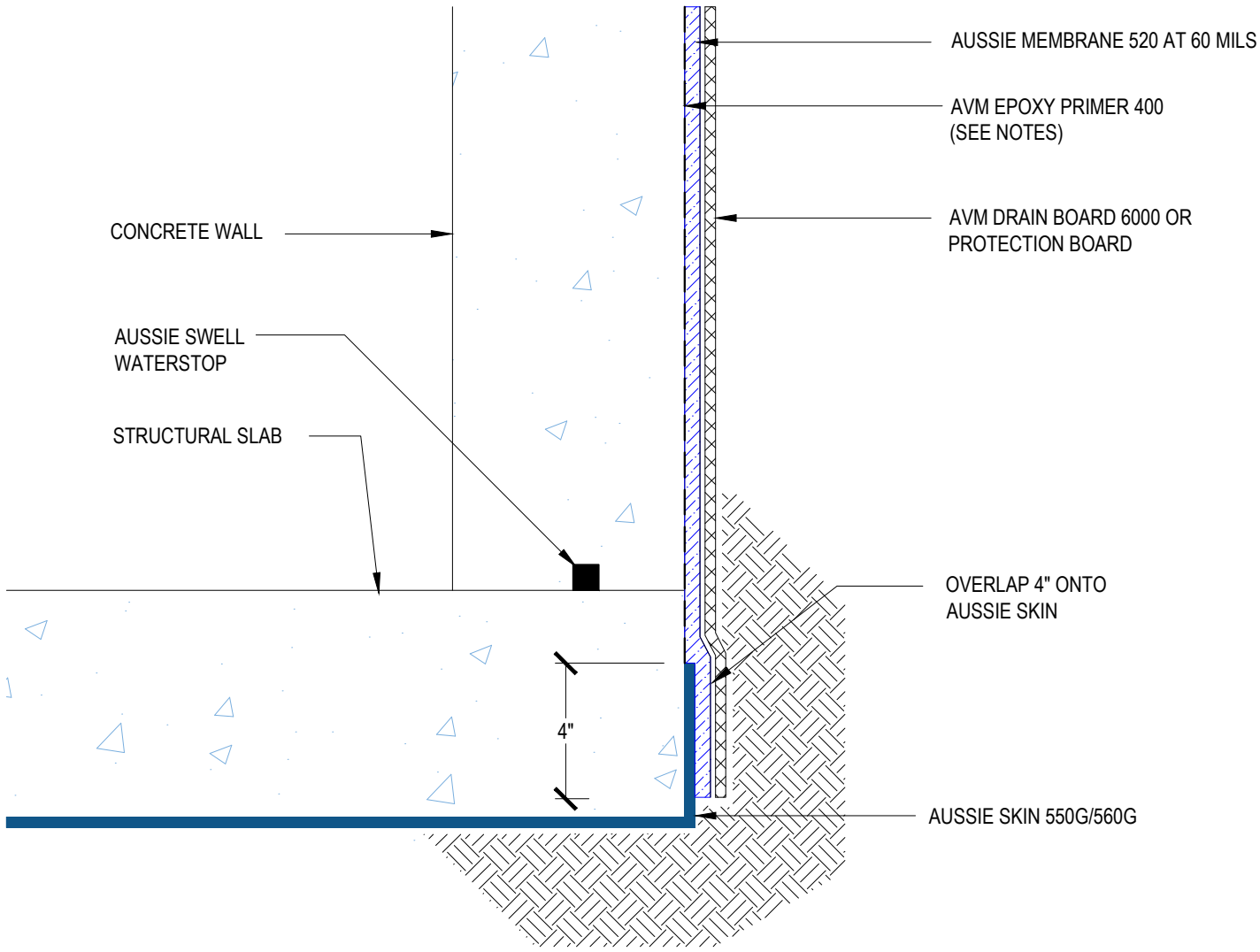
- Notes:**
1. Aussie Membrane 520 is a Polyurethane liquid (Roller or Brush Applied) for Below-Grade, Between-Slab, Planters, Roof-Gardens and similar type Waterproofing.
 2. Epoxy primer may be required if proper adhesion is not achieved - see installation instructions for further information
 3. Contact AVM if no drain board or protection board is specified

DETAIL #:
0520-0006
System:
Aussie Membrane 520

Transition to Aussie Skin Flush Footing



AUSSIE MEMBRANE 520



Notes:

- 1. Aussie Membrane 520 is a Polyurethane liquid (Roller or Brush Applied) for Below-Grade, Between-Slab, Planters, Roof-Gardens and similar type Waterproofing.
- 2. Epoxy primer may be required if proper adhesion is not achieved - see installation instructions for further information
- 3. Contact AVM if no drain board or protection board is specified

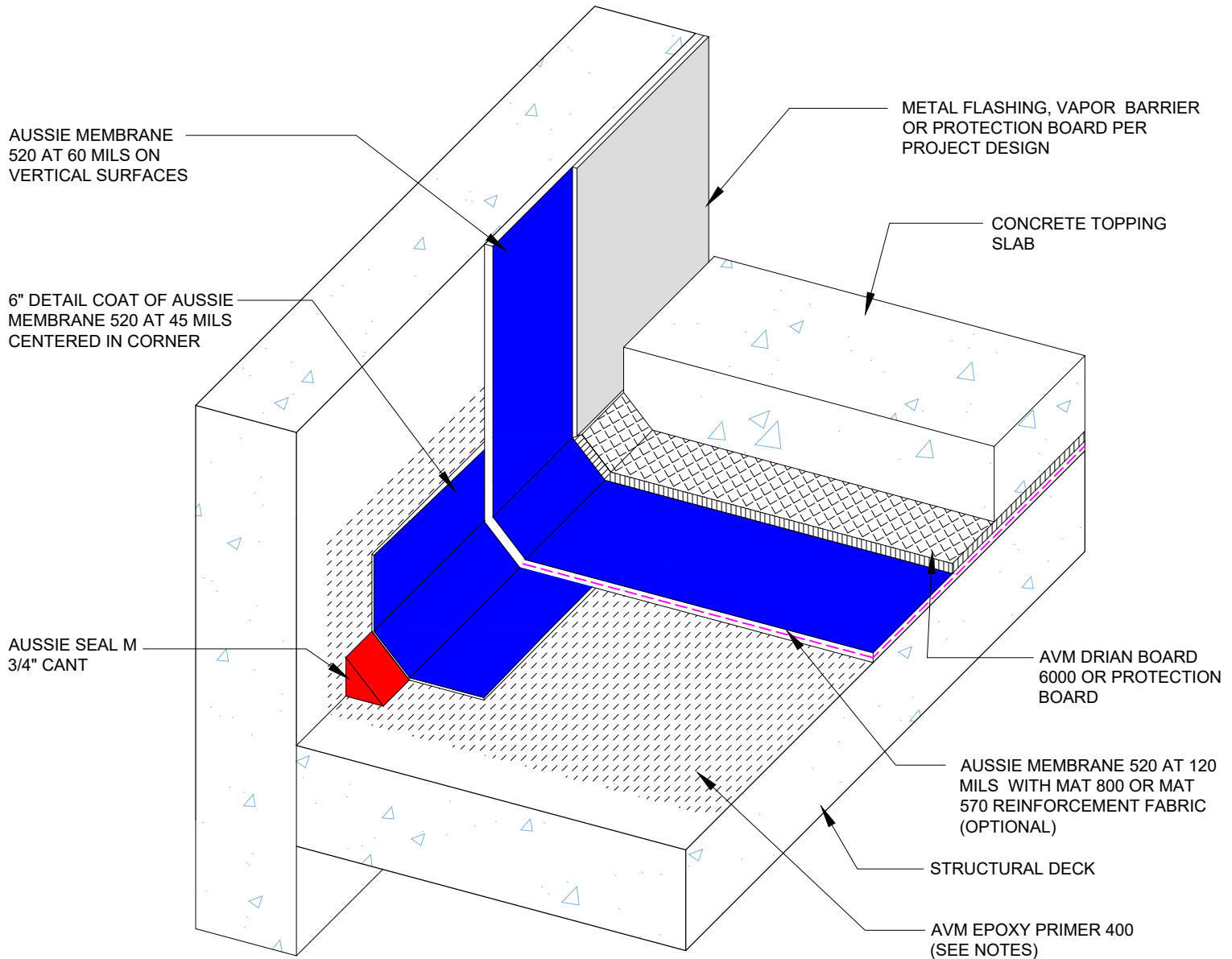
DETAIL #:
0520-1100

System:
Aussie Membrane 520

Deck to Wall Transition



AUSSIE MEMBRANE 520 120 Mil System



Notes:

1. Aussie Membrane 520 is a Polyurethane liquid (Roller or Brush Applied) for Below-Grade, Between-Slab, Planters, Roof-Gardens and similar type Waterproofing.
2. Epoxy primer may be required if proper adhesion is not achieved - see installation instructions for further information
3. Contact AVM if no drain board or protection board is specified

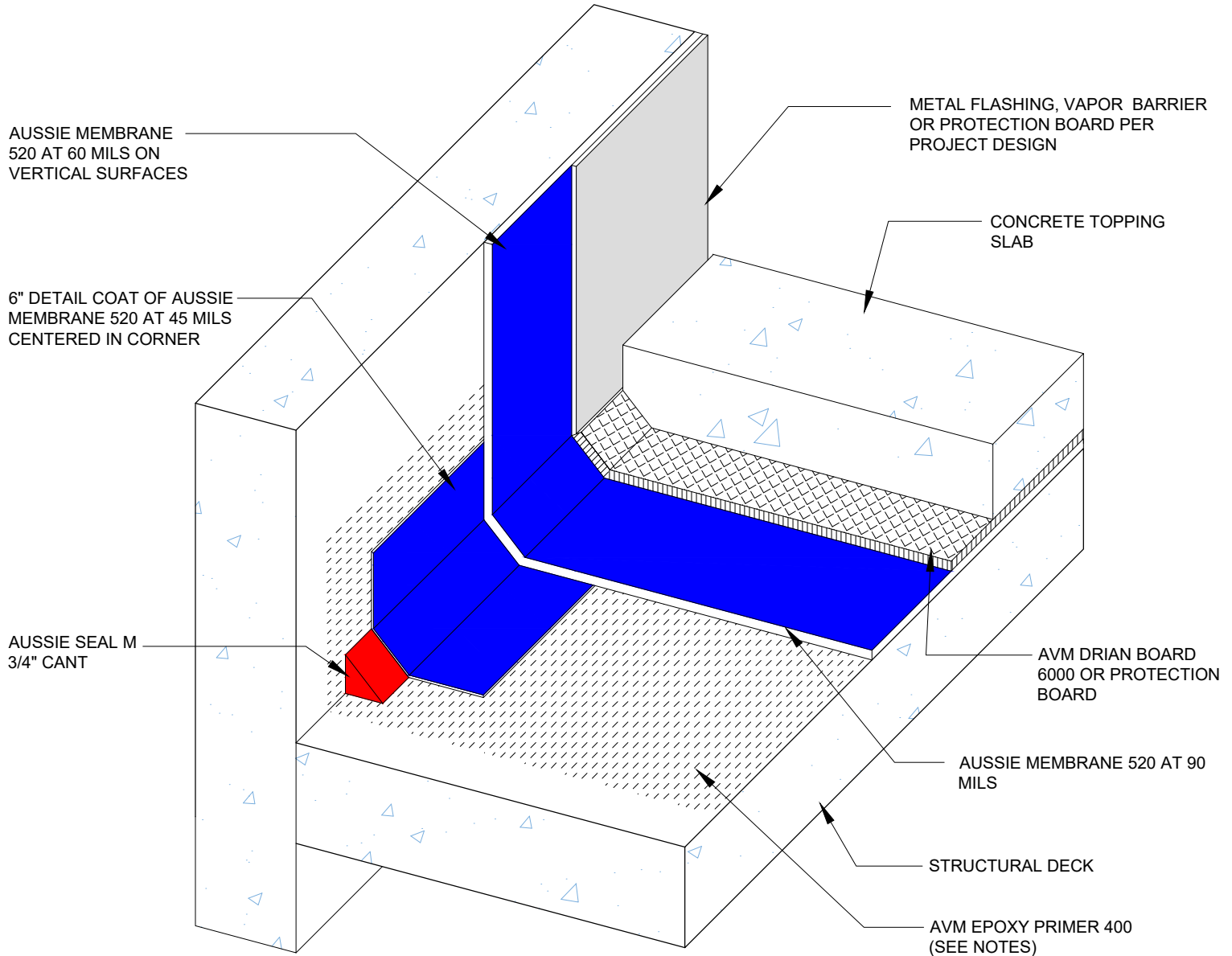
DETAIL #:
0520-1102

System:
Aussie Membrane 520

Deck to Wall Transition



AUSSIE MEMBRANE 520 90 Mil System



Notes:

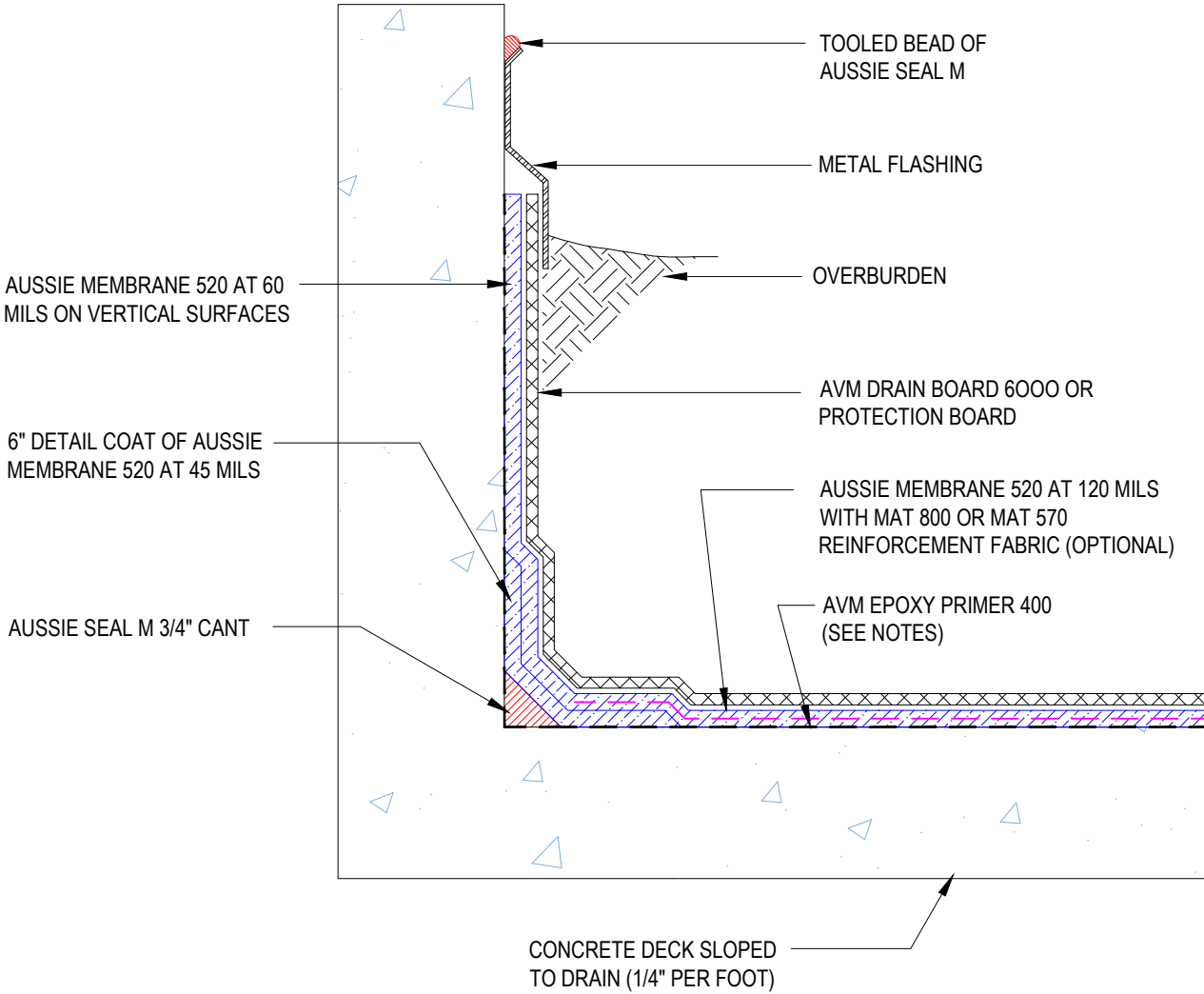
1. Aussie Membrane 520 is a Polyurethane liquid (Roller or Brush Applied) for Below-Grade, Between-Slab, Planters, Roof-Gardens and similar type Waterproofing.
2. Epoxy primer may be required if proper adhesion is not achieved - see installation instructions for further information
3. Contact AVM if no drain board or protection board is specified

DETAIL #:
0520-1104
 System:
Aussie Membrane 520

Deck to Wall Transition With Flashing



AUSSIE MEMBRANE 520
120 Mil System



Notes:

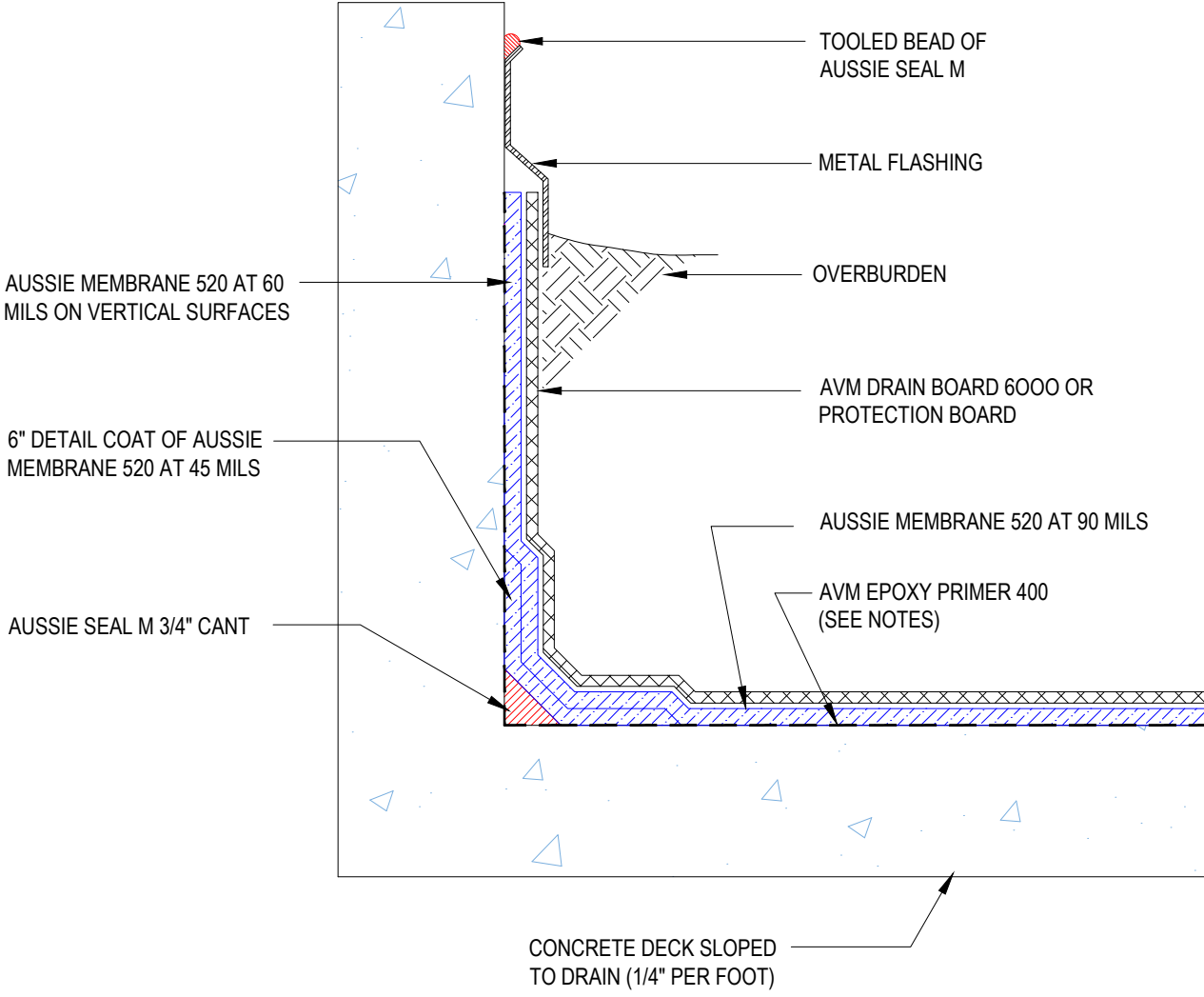
1. Aussie Membrane 520 is a Polyurethane liquid (Roller or Brush Applied) for Below-Grade, Between-Slab, Planters, Roof-Gardens and similar type Waterproofing.
2. Epoxy primer may be required if proper adhesion is not achieved - see installation instructions for further information
3. Contact AVM if no drain board or protection board is specified

DETAIL #:
0520-1105
 System:
Aussie Membrane 520

Deck to Wall Transition With Flashing



AUSSIE MEMBRANE 520
90 Mil System



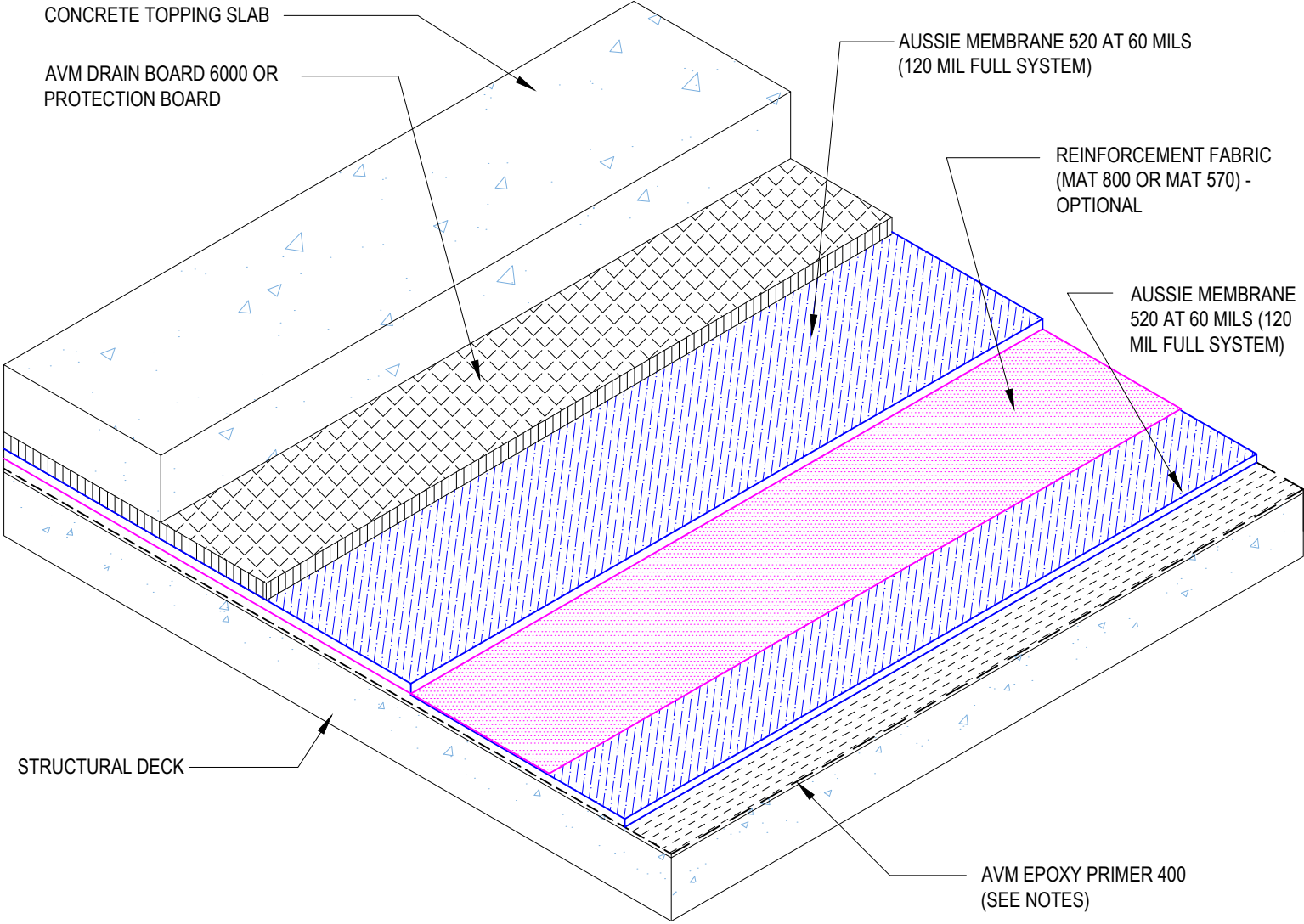
- Notes:**
1. Aussie Membrane 520 is a Polyurethane liquid (Roller or Brush Applied) for Below-Grade, Between-Slab, Planters, Roof-Gardens and similar type Waterproofing.
 2. Epoxy primer may be required if proper adhesion is not achieved - see installation instructions for further information
 3. Contact AVM if no drain board or protection board is specified

DETAIL #:
0520-1106
System:
Aussie Membrane 520

Split Slab Assembly



AUSSIE MEMBRANE 520 120 Mil System



Notes:

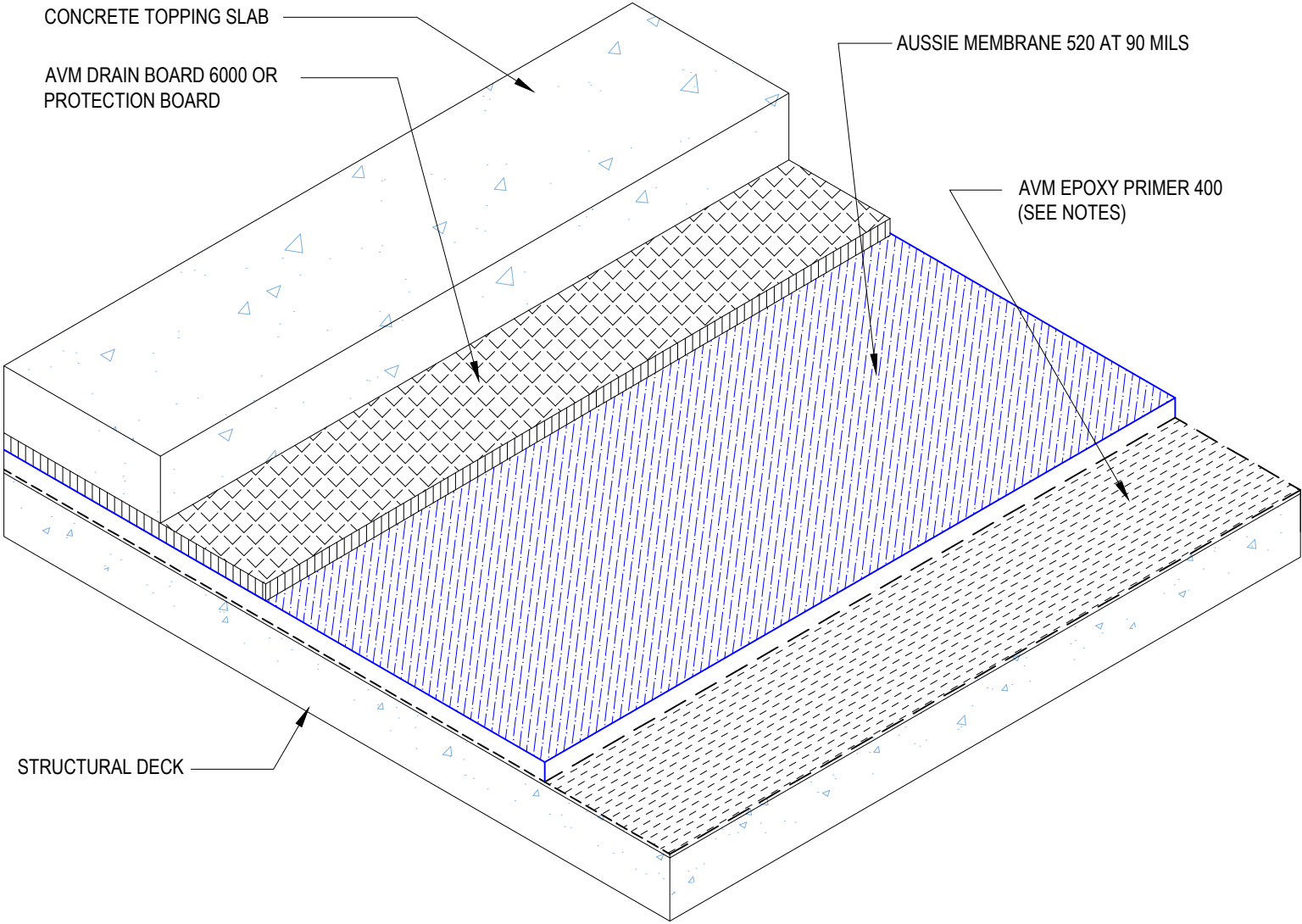
- 1. Aussie Membrane 520 is a Polyurethane liquid (Roller or Brush Applied) for Below-Grade, Between-Slab, Planters, Roof-Gardens and similar type Waterproofing.
- 2. Epoxy primer may be required if proper adhesion is not achieved - see installation instructions for further information
- 3. Contact AVM if no drain board or protection board is specified

DETAIL #:
0520-1107
System:
Aussie Membrane 520

Split Slab Assembly



AUSSIE MEMBRANE 520 90 Mil System



Notes:

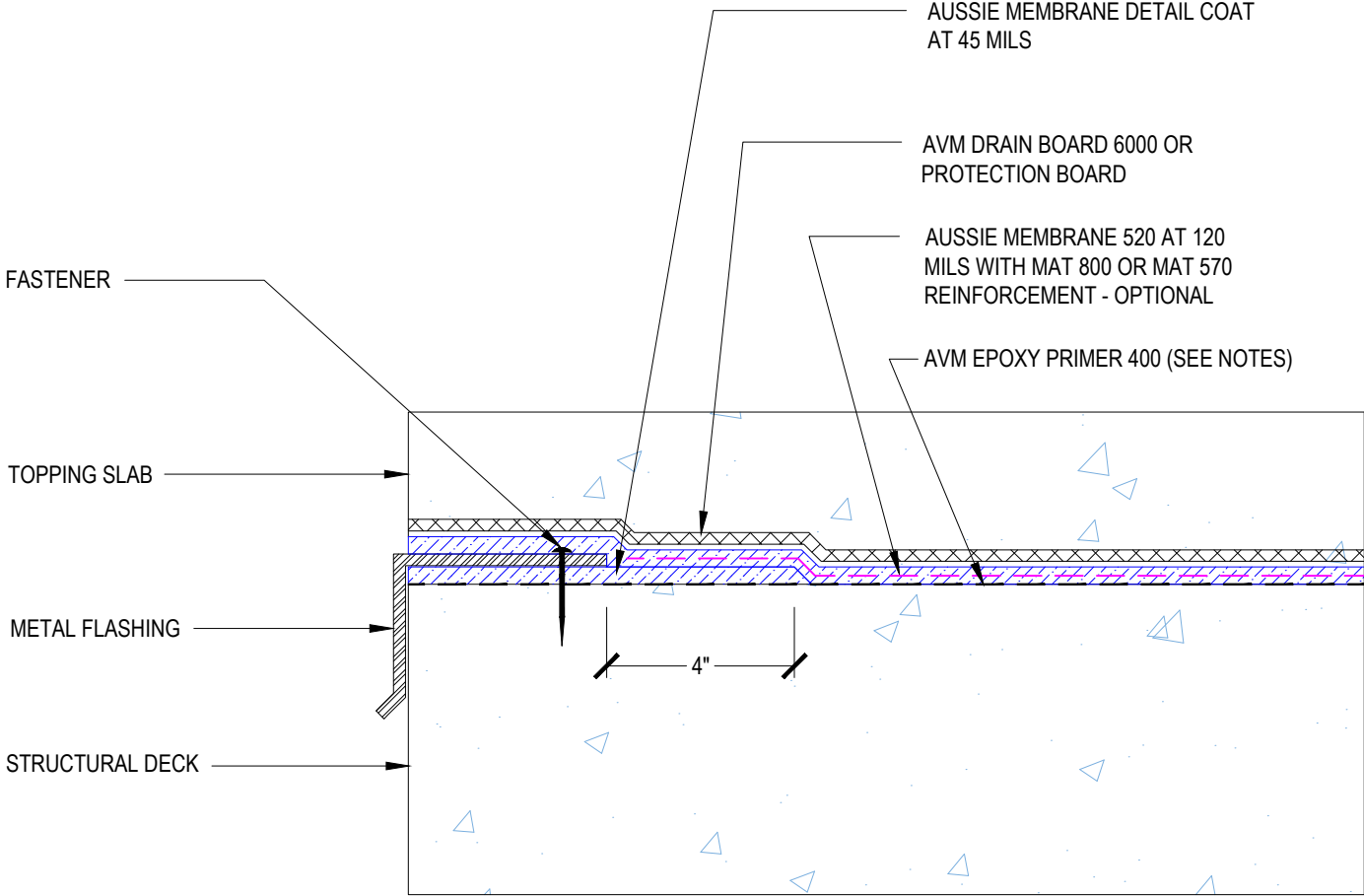
- 1. Aussie Membrane 520 is a Polyurethane liquid (Roller or Brush Applied) for Below-Grade, Between-Slab, Planters, Roof-Gardens and similar type Waterproofing.
- 2. Epoxy primer may be required if proper adhesion is not achieved - see installation instructions for further information
- 3. Contact AVM if no drain board or protection board is specified

DETAIL #:
0520-1108
System:
Aussie Membrane 520

Split Slab Edge Termination



AUSSIE MEMBRANE 520
120 Mil System



Notes:

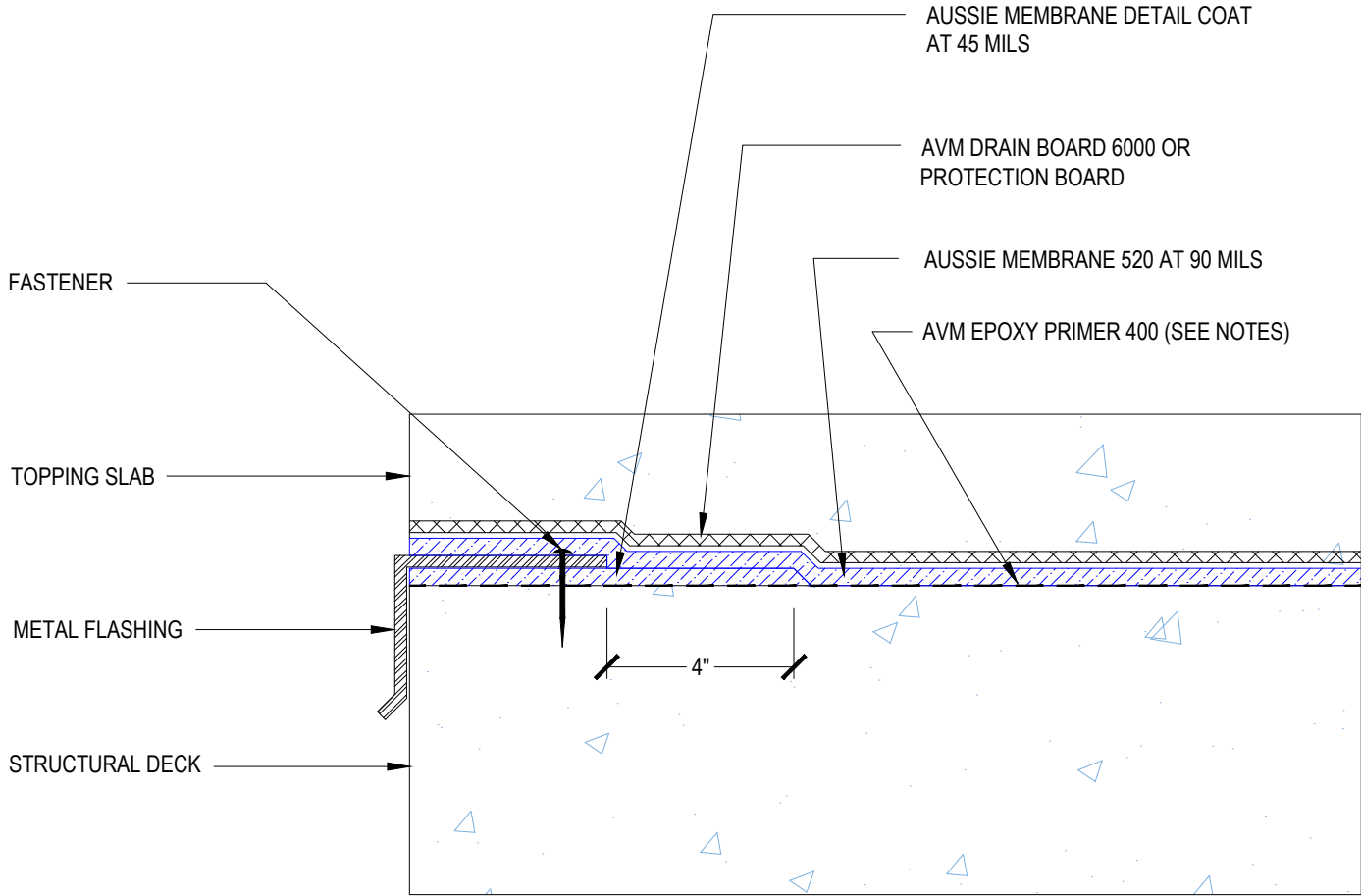
- 1. Aussie Membrane 520 is a Polyurethane liquid (Roller or Brush Applied) for Below-Grade, Between-Slab, Planters, Roof-Gardens and similar type Waterproofing.
- 2. Epoxy primer may be required if proper adhesion is not achieved - see installation instructions for further information
- 3. Contact AVM if no drain board or protection board is specified

DETAIL #:
0520-1109
System:
Aussie Membrane 520

Split Slab Edge Termination



AUSSIE MEMBRANE 520
90 Mil System



Notes:

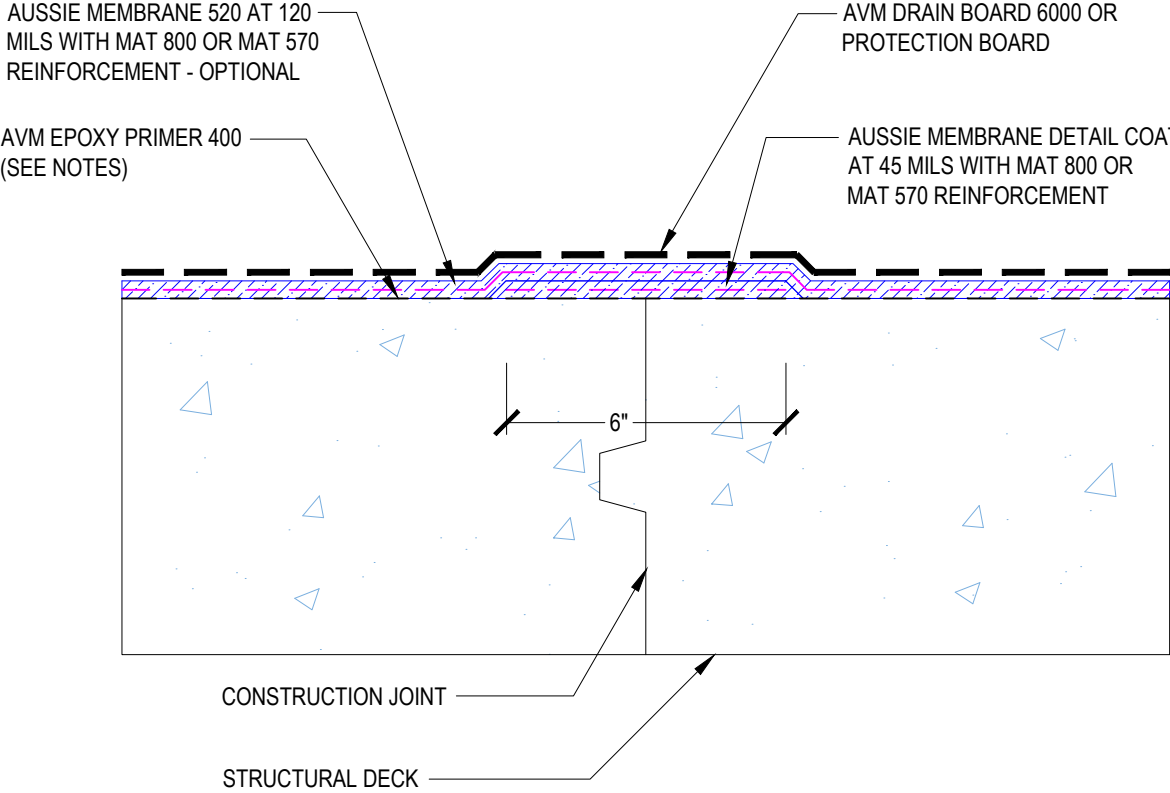
- 1. Aussie Membrane 520 is a Polyurethane liquid (Roller or Brush Applied) for Below-Grade, Between-Slab, Planters, Roof-Gardens and similar type Waterproofing.
- 2. Epoxy primer may be required if proper adhesion is not achieved - see installation instructions for further information
- 3. Contact AVM if no drain board or protection board is specified

DETAIL #:
0520-1200
System:
Aussie Membrane 520

Construction Joint Detailing



AUSSIE MEMBRANE 520 120 Mil System



Notes:

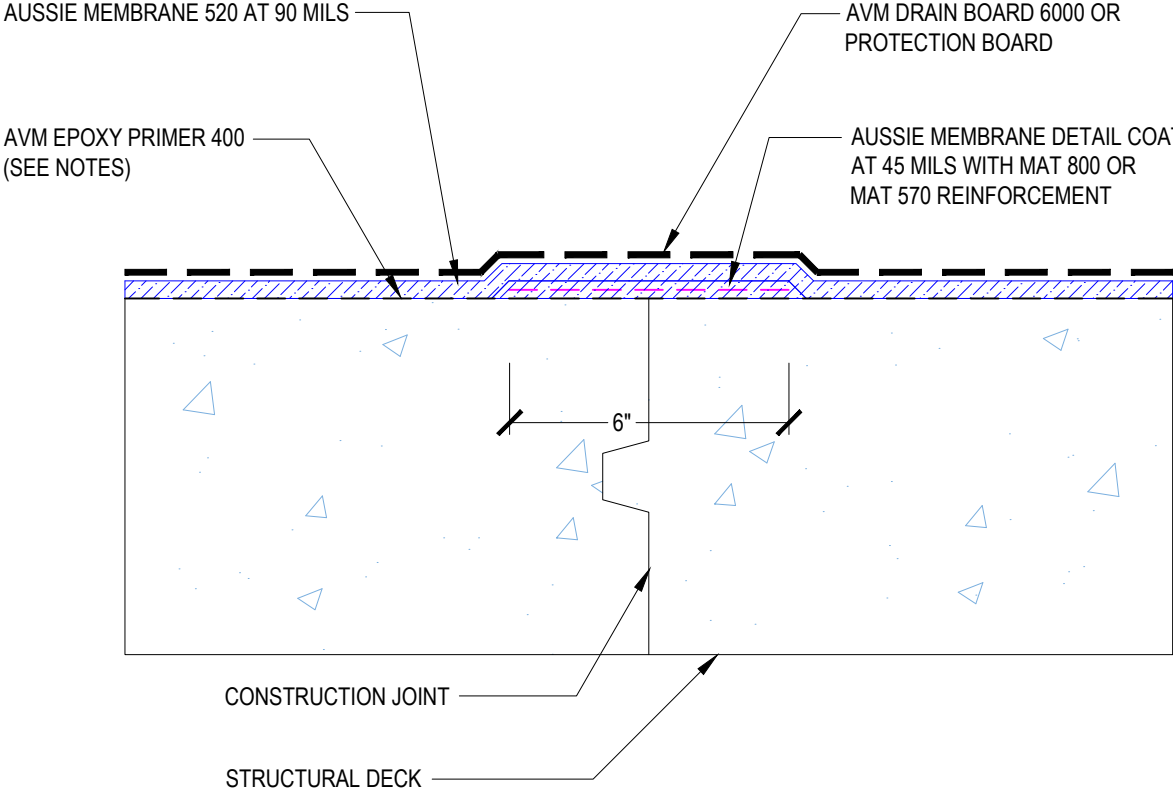
- 1. Aussie Membrane 520 is a Polyurethane liquid (Roller or Brush Applied) for Below-Grade, Between-Slab, Planters, Roof-Gardens and similar type Waterproofing.
- 2. Epoxy primer may be required if proper adhesion is not achieved - see installation instructions for further information
- 3. Contact AVM if no drain board or protection board is specified

DETAIL #:
0520-1201
System:
Aussie Membrane 520

Construction Joint Detailing



AUSSIE MEMBRANE 520 90 Mil System



Notes:

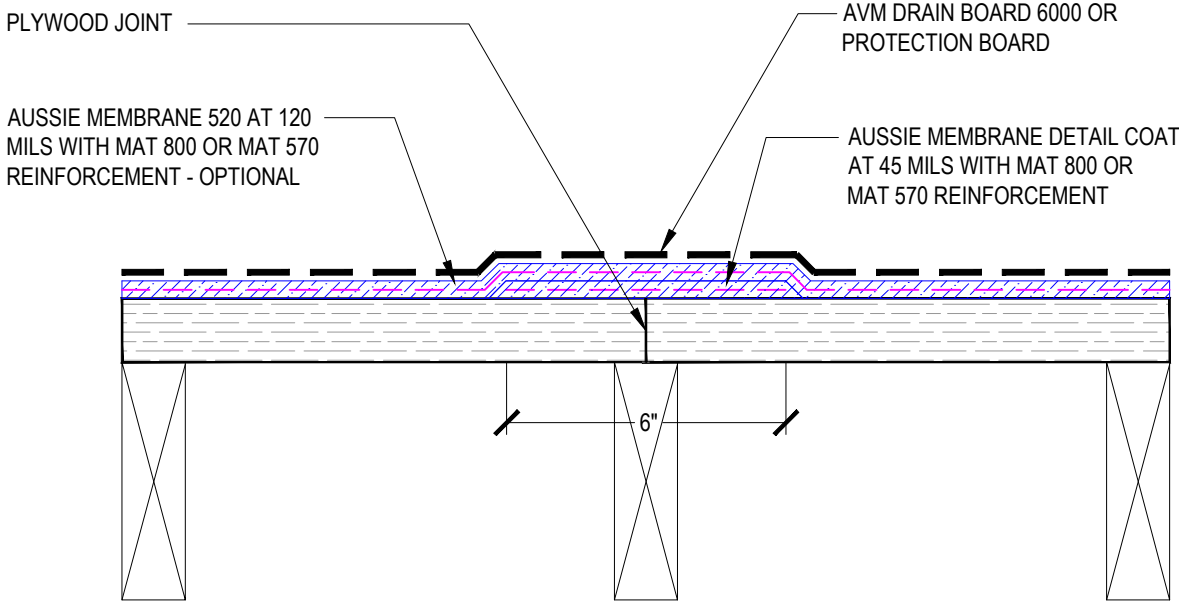
- 1. Aussie Membrane 520 is a Polyurethane liquid (Roller or Brush Applied) for Below-Grade, Between-Slab, Planters, Roof-Gardens and similar type Waterproofing.
- 2. Epoxy primer may be required if proper adhesion is not achieved - see installation instructions for further information
- 3. Contact AVM if no drain board or protection board is specified

DETAIL #:
0520-1204
System:
Aussie Membrane 520

Construction Joint Detailing



AUSSIE MEMBRANE 520 120 Mil System



Notes:

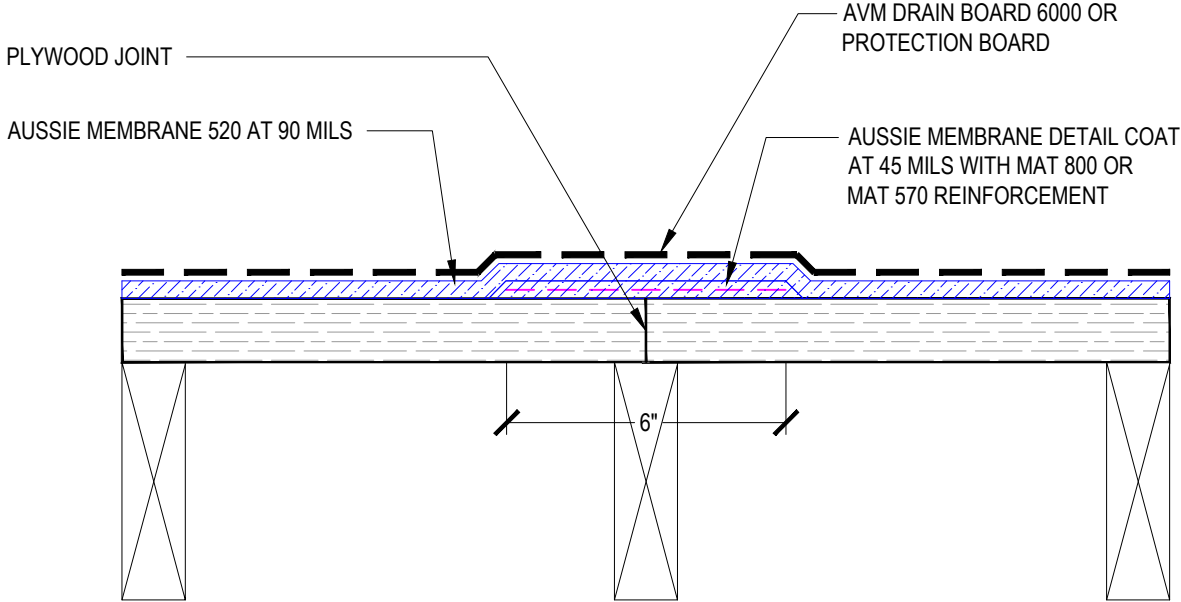
- 1. Aussie Membrane 520 is a Polyurethane liquid (Roller or Brush Applied) for Below-Grade, Between-Slab, Planters, Roof-Gardens and similar type Waterproofing.
- 2. Epoxy primer may be required if proper adhesion is not achieved - see installation instructions for further information
- 3. Contact AVM if no drain board or protection board is specified

DETAIL #:
0520-1205
System:
Aussie Membrane 520

Construction Joint Detailing



AUSSIE MEMBRANE 520 90 Mil System



Notes:

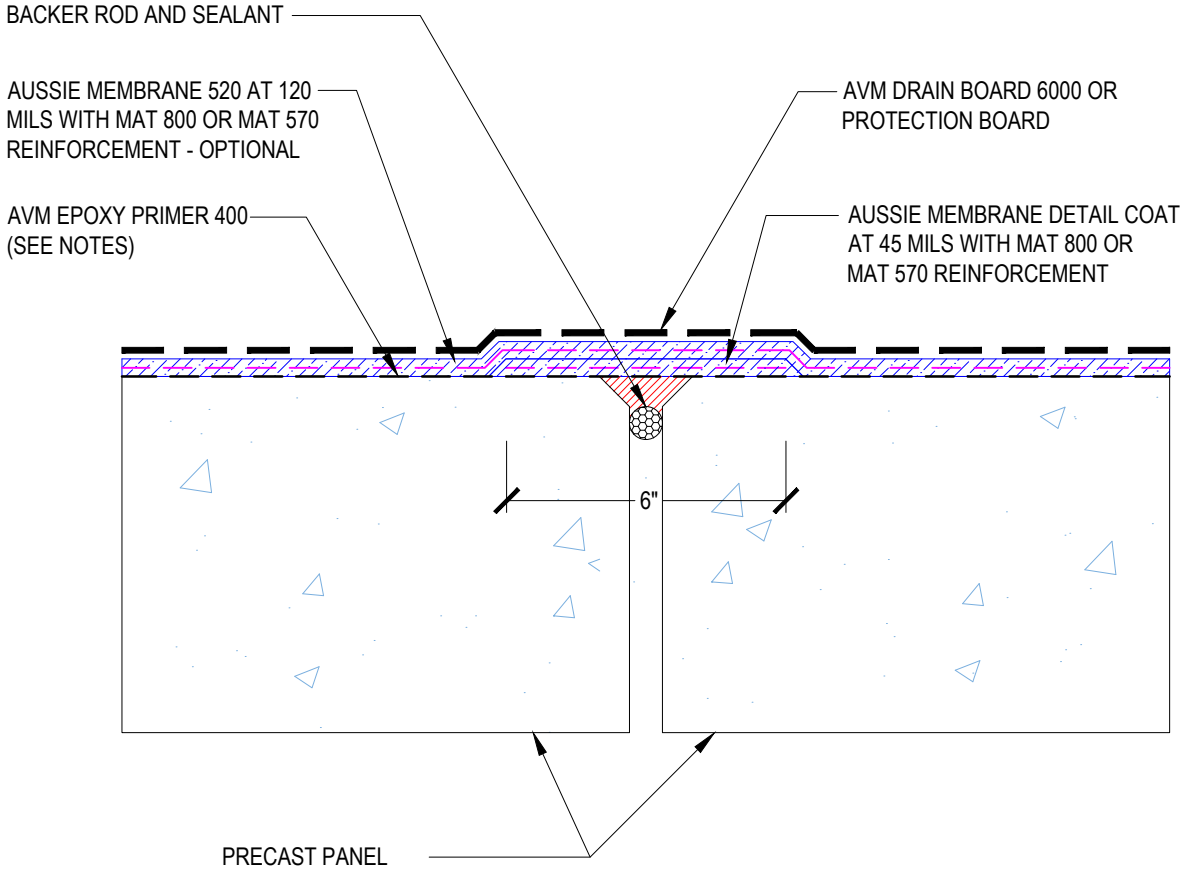
- 1. Aussie Membrane 520 is a Polyurethane liquid (Roller or Brush Applied) for Below-Grade, Between-Slab, Planters, Roof-Gardens and similar type Waterproofing.
- 2. Contact AVM if no drain board or protection board is specified

DETAIL #:
0520-1206
System:
Aussie Membrane 520

Precast Joint Detailing



AUSSIE MEMBRANE 520 120 Mil System



Notes:

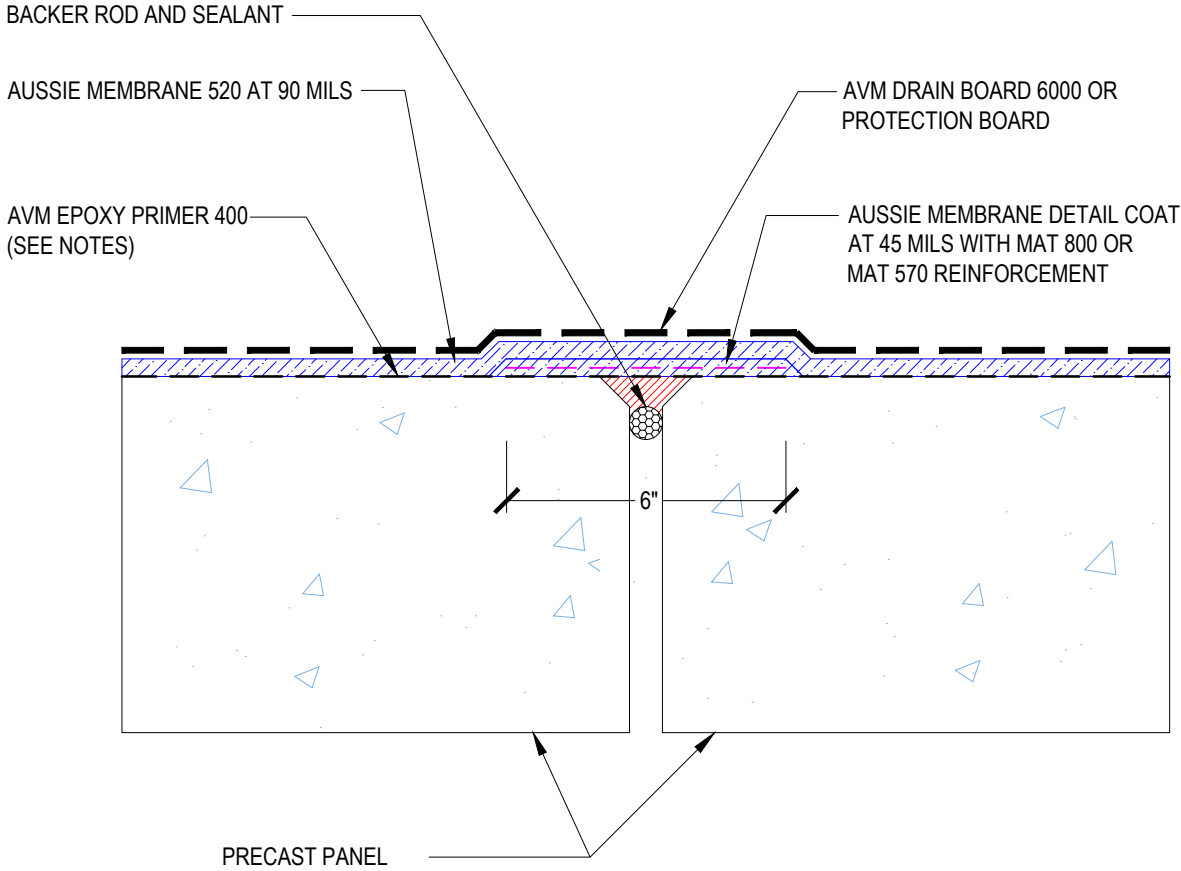
- 1. Aussie Membrane 520 is a Polyurethane liquid (Roller or Brush Applied) for Below-Grade, Between-Slab, Planters, Roof-Gardens and similar type Waterproofing.
- 2. Epoxy primer may be required if proper adhesion is not achieved - see installation instructions for further information
- 3. Contact AVM if no drain board or protection board is specified

DETAIL #:
0520-1207
System:
Aussie Membrane 520

Precast Joint Detailing



AUSSIE MEMBRANE 520 90 Mil System



Notes:

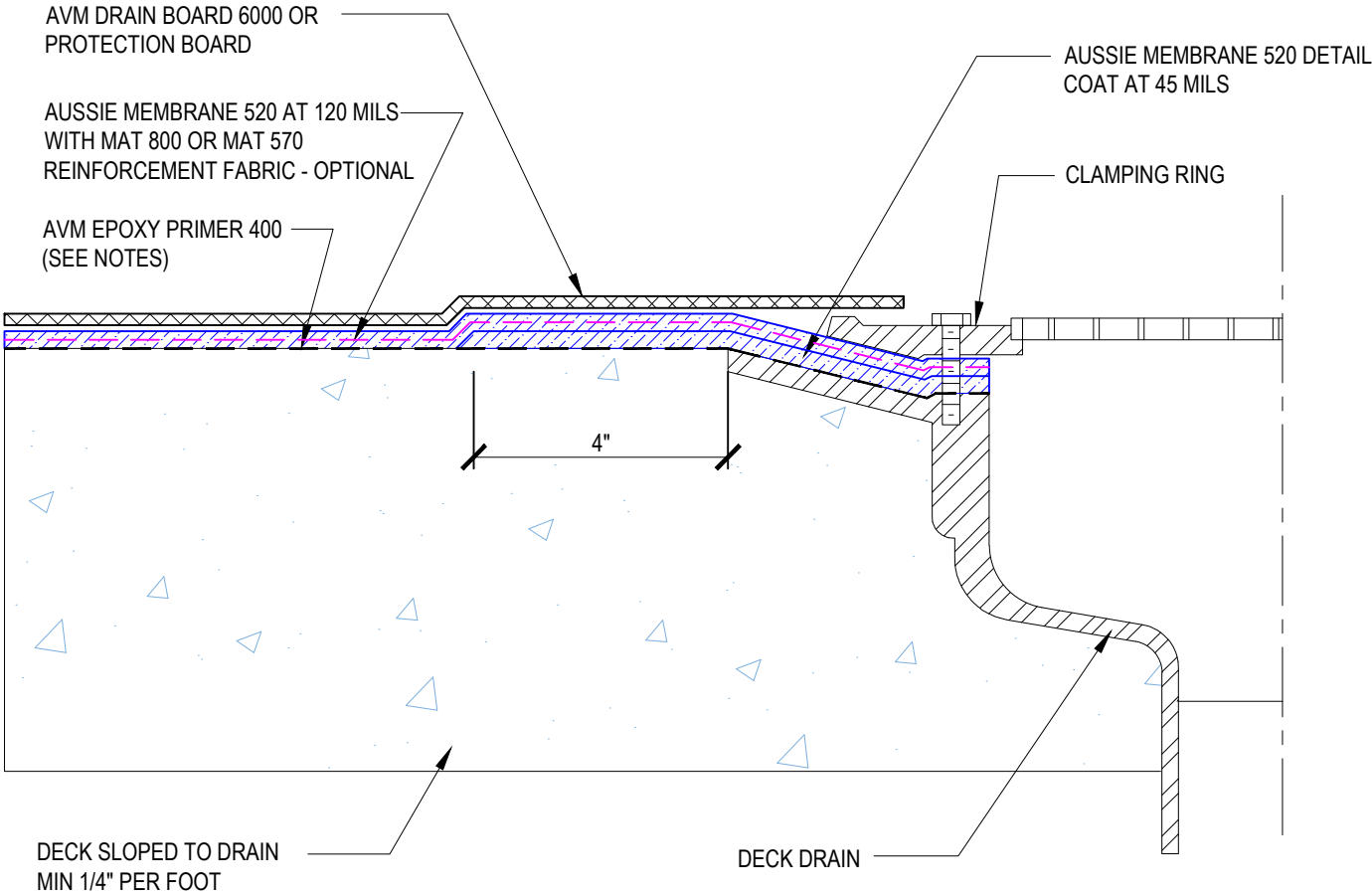
- 1. Aussie Membrane 520 is a Polyurethane liquid (Roller or Brush Applied) for Below-Grade, Between-Slab, Planters, Roof-Gardens and similar type Waterproofing.
- 2. Epoxy primer may be required if proper adhesion is not achieved - see installation instructions for further information
- 3. Contact AVM if no drain board or protection board is specified

DETAIL #:
0520-1504
System:
Aussie Membrane 520

Deck Drain - Flush



AUSSIE MEMBRANE 520 120 Mil System



Notes:

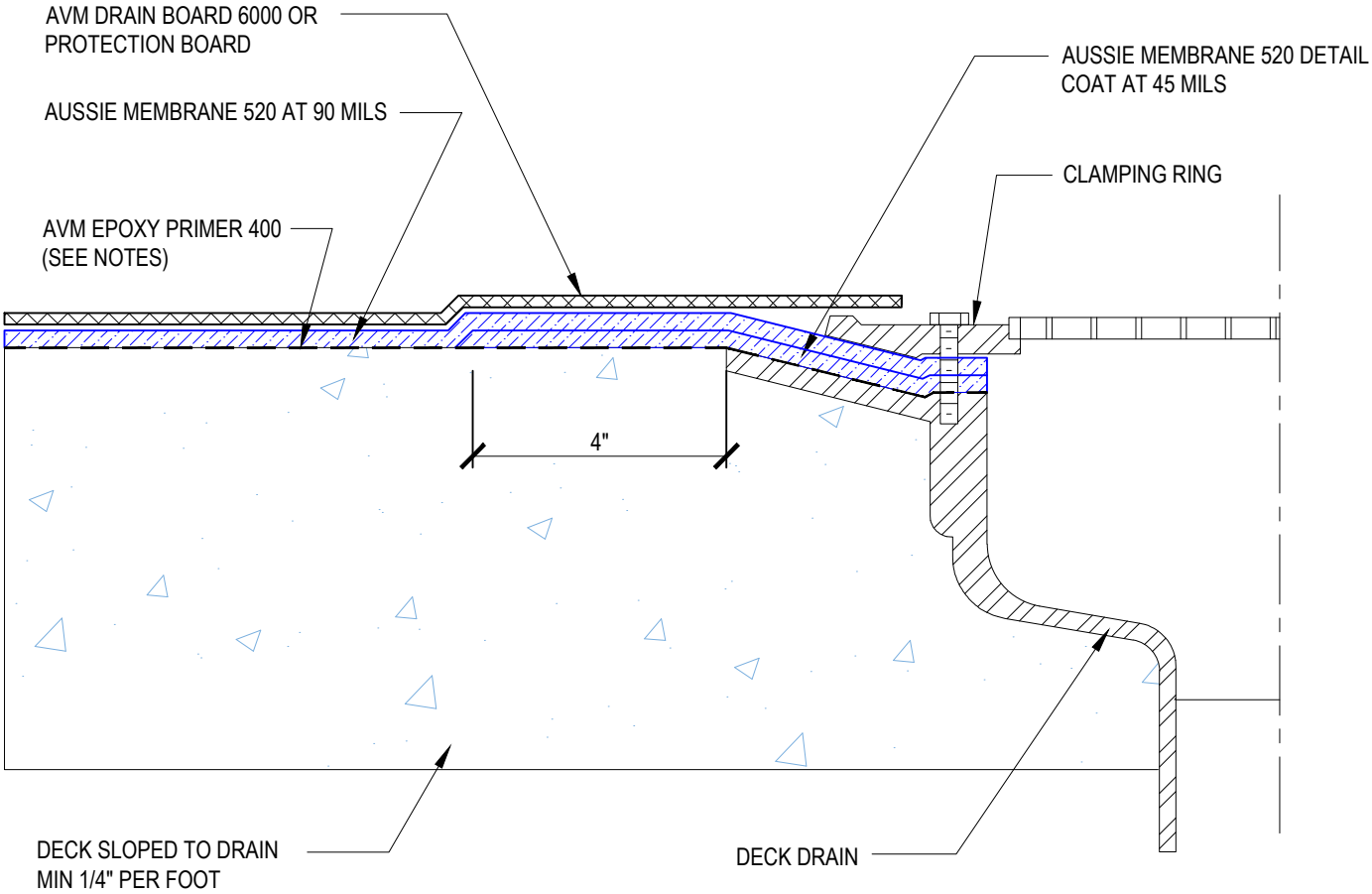
- 1. Aussie Membrane 520 is a Polyurethane liquid (Roller or Brush Applied) for Below-Grade, Between-Slab, Planters, Roof-Gardens and similar type Waterproofing.
- 2. Epoxy primer may be required if proper adhesion is not achieved - see installation instructions for further information
- 3. Contact AVM if no drain board or protection board is specified

DETAIL #:
0520-1505
System:
Aussie Membrane 520

Deck Drain - Flush



AUSSIE MEMBRANE 520 90 Mil System



Notes:

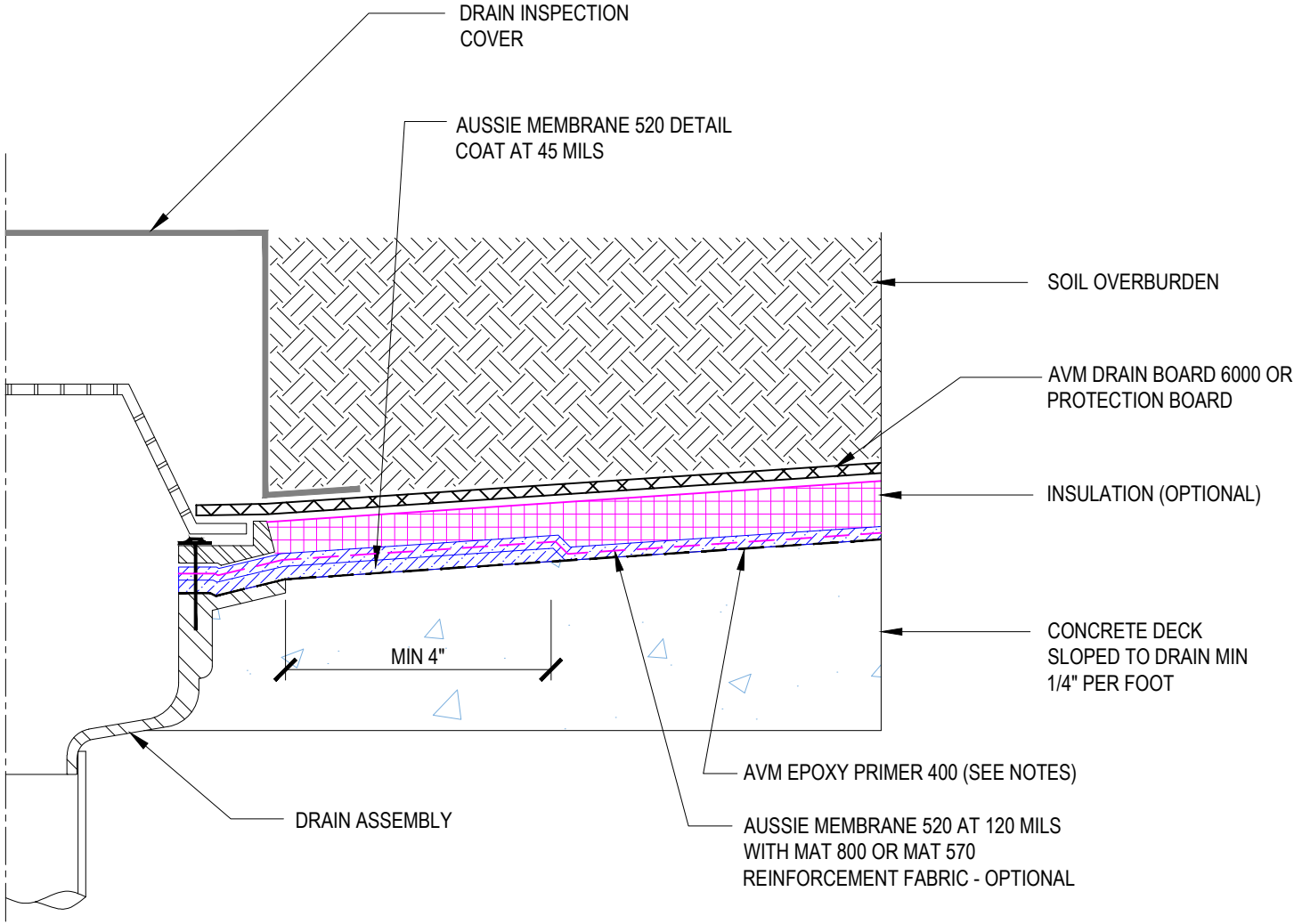
- 1. Aussie Membrane 520 is a Polyurethane liquid (Roller or Brush Applied) for Below-Grade, Between-Slab, Planters, Roof-Gardens and similar type Waterproofing.
- 2. Epoxy primer may be required if proper adhesion is not achieved - see installation instructions for further information
- 3. Contact AVM if no drain board or protection board is specified

DETAIL #:
 0520-1506
 System:
 Aussie Membrane 520

Deck Drain with Inspection Cover



AUSSIE MEMBRANE 520 120 Mil System



Notes:

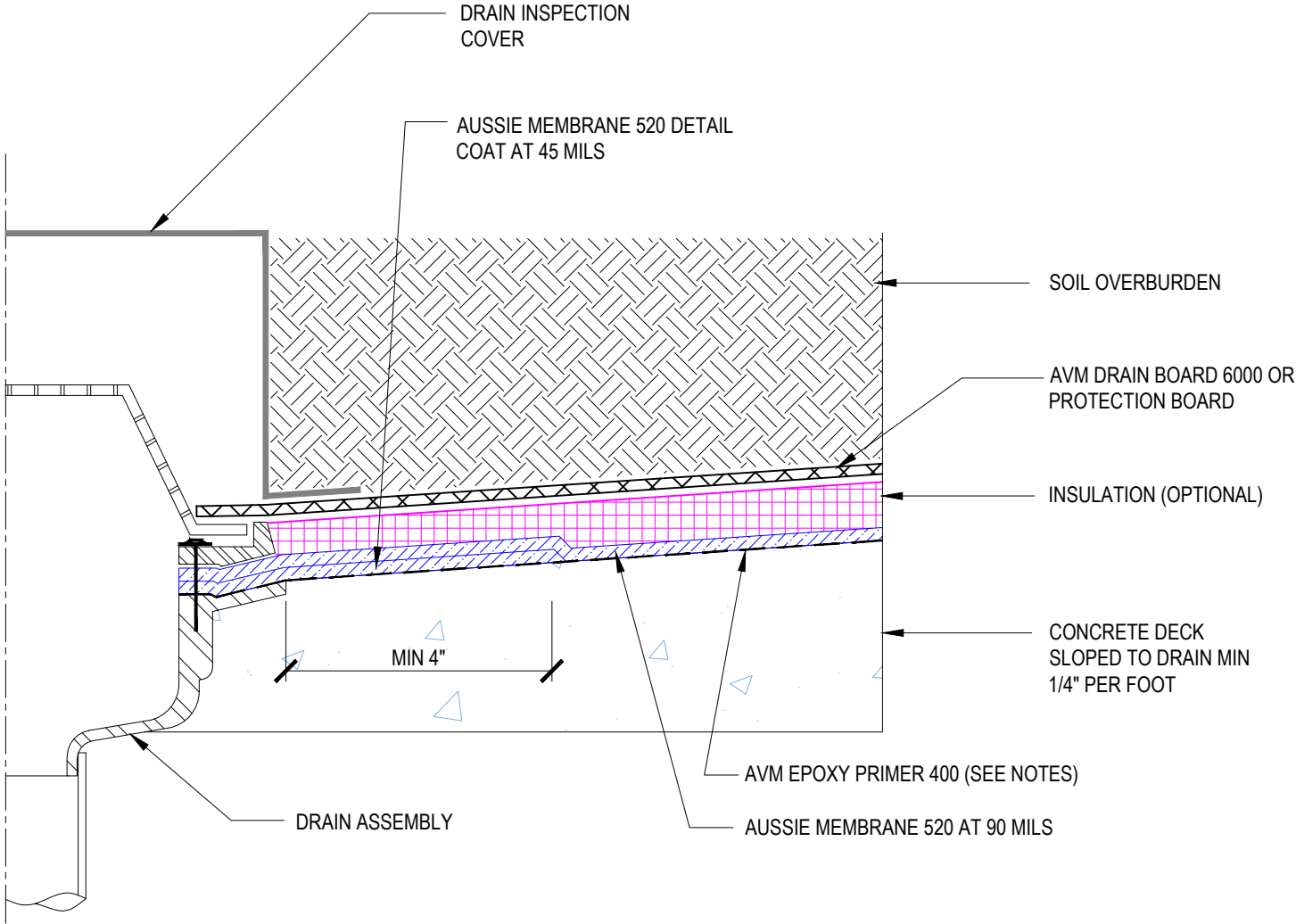
1. Aussie Membrane 520 is a Polyurethane liquid (Roller or Brush Applied) for Below-Grade, Between-Slab, Planters, Roof-Gardens and similar type Waterproofing.
2. Epoxy primer may be required if proper adhesion is not achieved - see installation instructions for further information
3. Contact AVM if no drain board or protection board is specified

DETAIL #:
0520-1507
System:
Aussie Membrane 520

Deck Drain with Inspection Cover



AUSSIE MEMBRANE 520
90 Mil System



Notes:

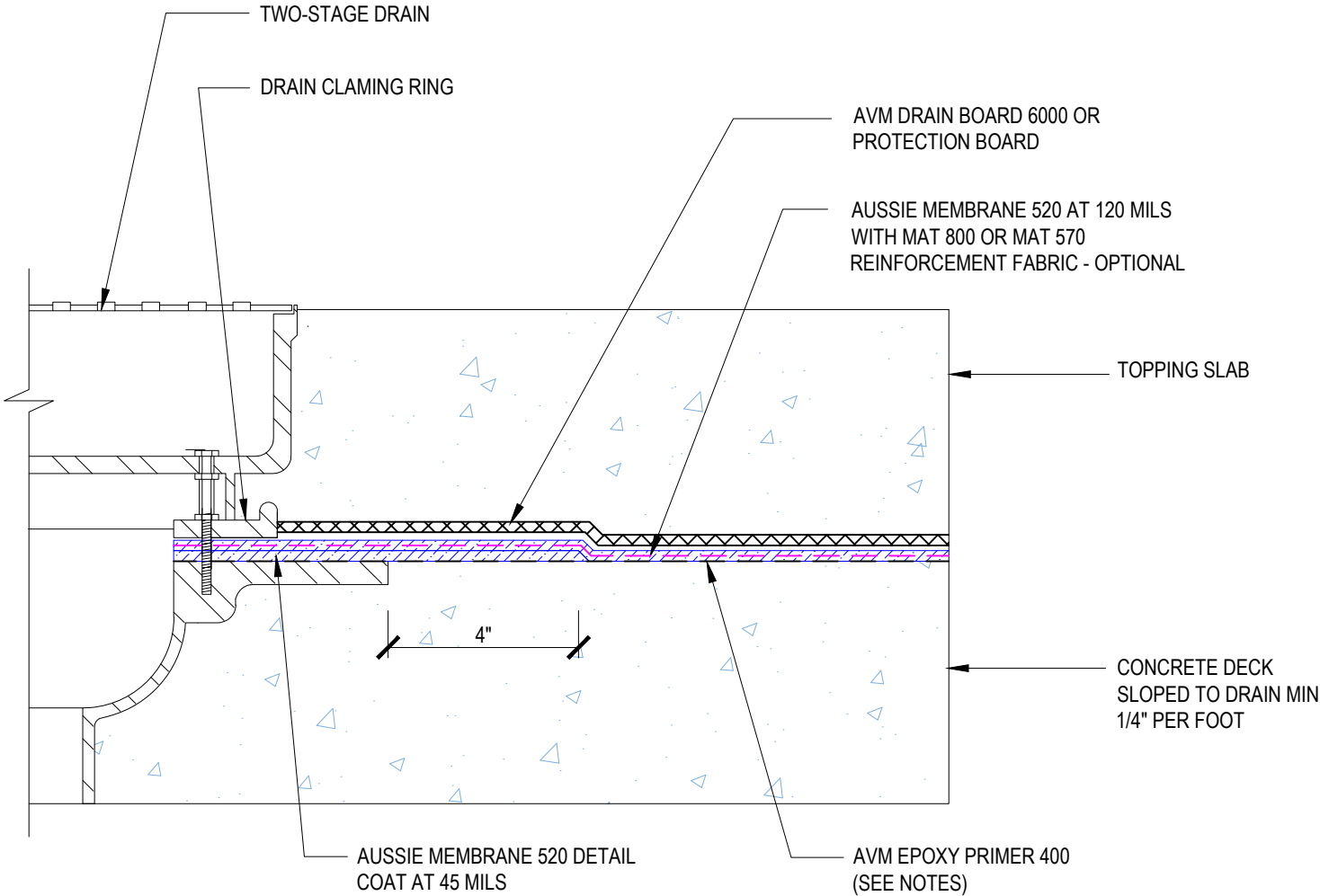
- 1. Aussie Membrane 520 is a Polyurethane liquid (Roller or Brush Applied) for Below-Grade, Between-Slab, Planters, Roof-Gardens and similar type Waterproofing.
- 2. Epoxy primer may be required if proper adhesion is not achieved - see installation instructions for further information
- 3. Contact AVM if no drain board or protection board is specified

DETAIL #:
0520-1508
System:
Aussie Membrane 520

Split Slab Two-Stage Drain



AUSSIE MEMBRANE 520 120 Mil System



Notes:

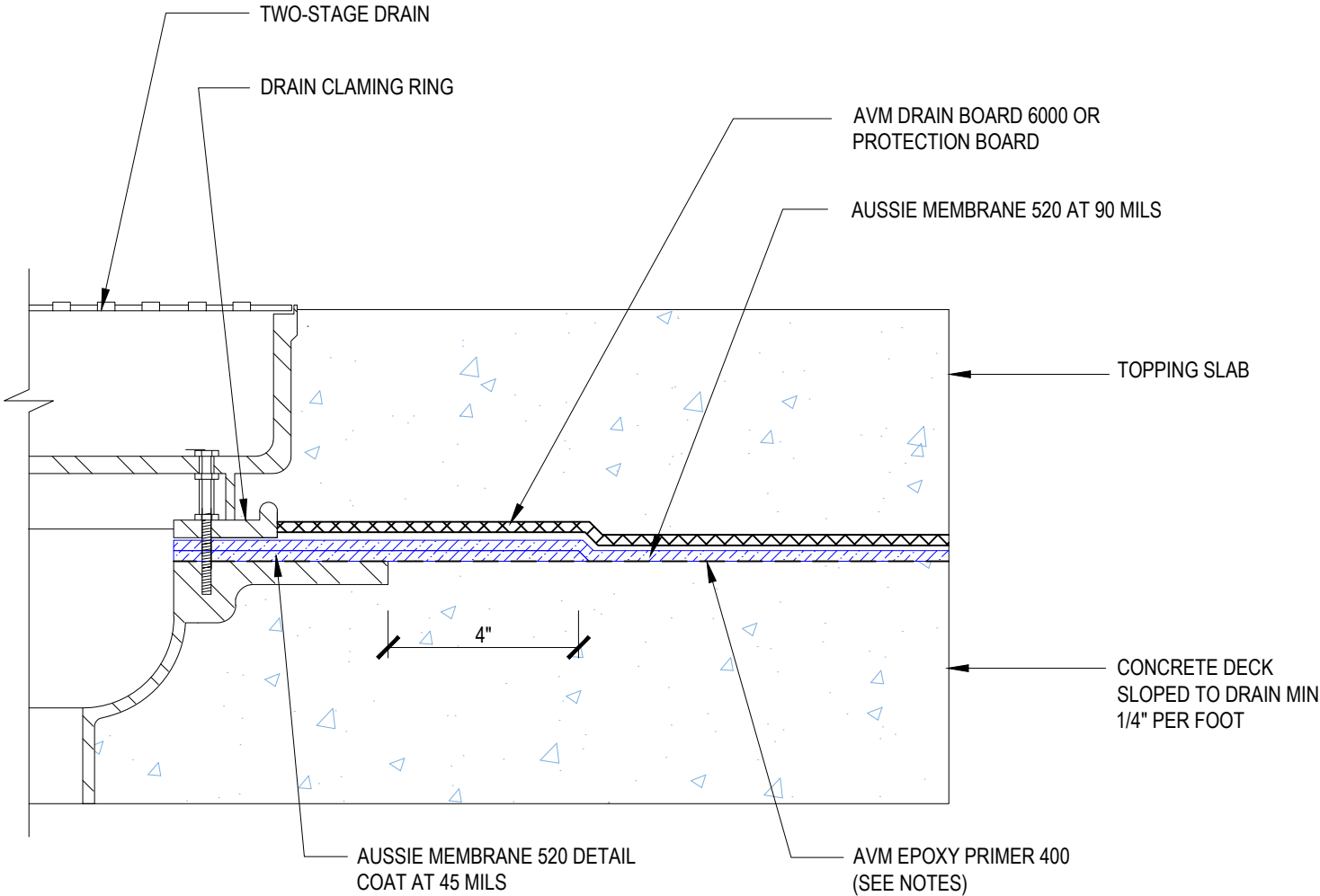
1. Aussie Membrane 520 is a Polyurethane liquid (Roller or Brush Applied) for Below-Grade, Between-Slab, Planters, Roof-Gardens and similar type Waterproofing.
2. Epoxy primer may be required if proper adhesion is not achieved - see installation instructions for further information
3. Contact AVM if no drain board or protection board is specified

DETAIL #:
0520-1509
System:
Aussie Membrane 520

Split Slab Two-Stage Drain



AUSSIE MEMBRANE 520 90 Mil System



Notes:

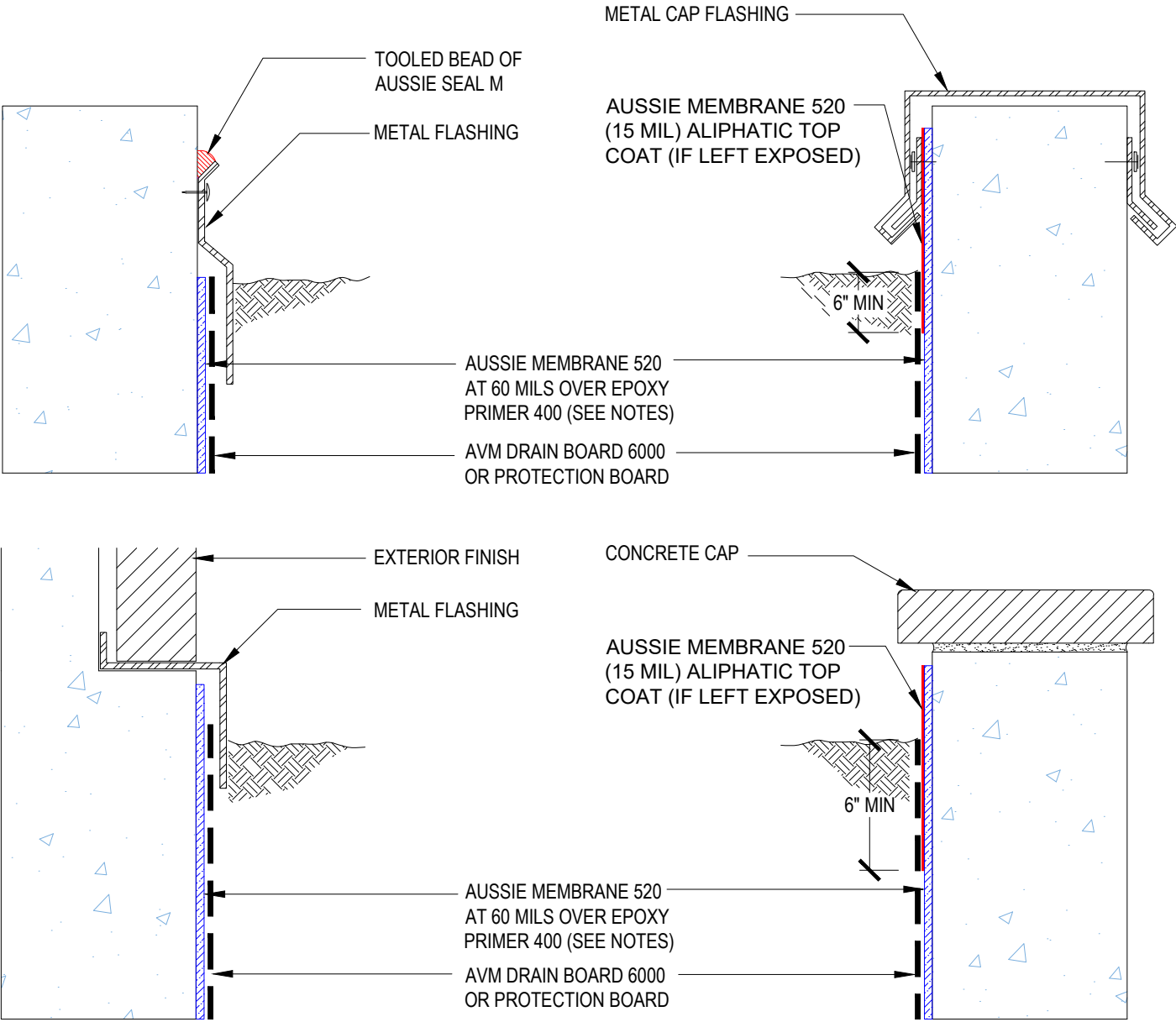
- 1. Aussie Membrane 520 is a Polyurethane liquid (Roller or Brush Applied) for Below-Grade, Between-Slab, Planters, Roof-Gardens and similar type Waterproofing.
- 2. Epoxy primer may be required if proper adhesion is not achieved - see installation instructions for further information
- 3. Contact AVM if no drain board or protection board is specified

DETAIL #:
0520-6002
 System:
Aussie Membrane 520

Planter Terminations



AUSSIE MEMBRANE 520



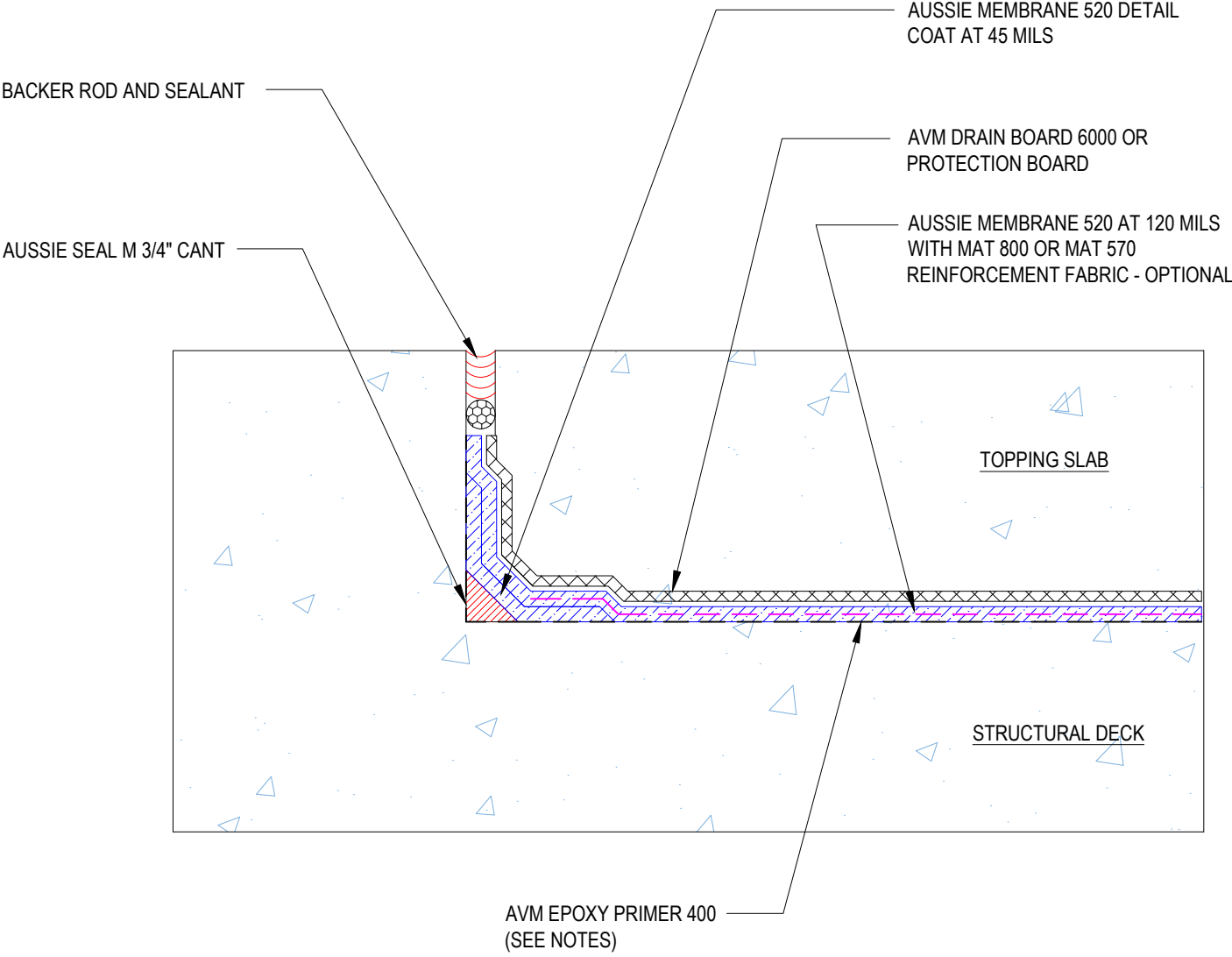
Notes:

1. Aussie Membrane 520 is a Polyurethane liquid (Roller or Brush Applied) for Below-Grade, Between-Slab, Planters, Roof-Gardens and similar type Waterproofing.
2. Epoxy primer may be required if proper adhesion is not achieved - see installation instructions for further information
3. Contact AVM if no drain board or protection board is specified

DETAIL #:
0520-6004
System:
Aussie Membrane 520

Sidewalk Termination

AUSSIE MEMBRANE 520
120 Mil System



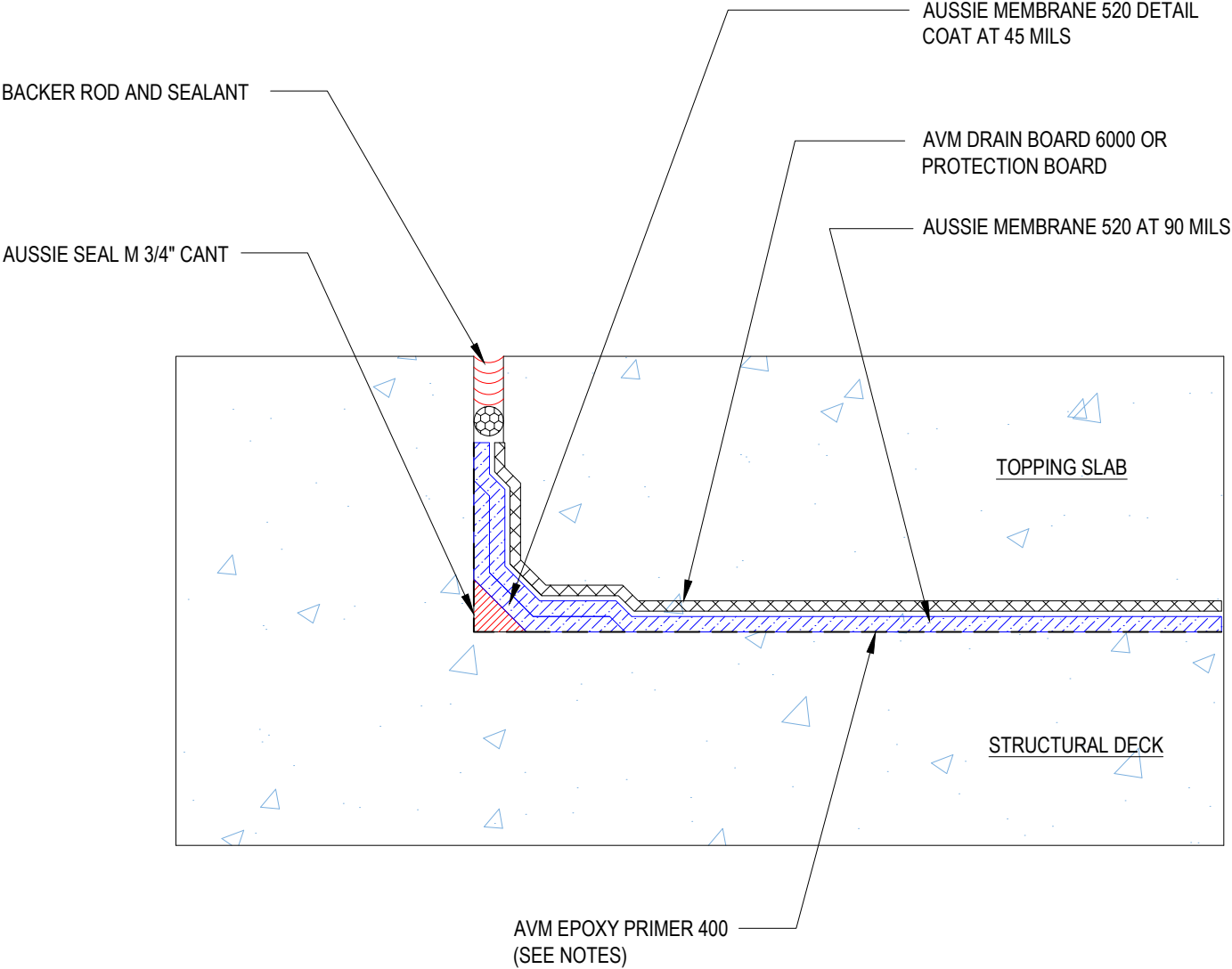
Notes:

- 1. Aussie Membrane 520 is a Polyurethane liquid (Roller or Brush Applied) for Below-Grade, Between-Slab, Planters, Roof-Gardens and similar type Waterproofing.
- 2. Epoxy primer may be required if proper adhesion is not achieved - see installation instructions for further information
- 3. Contact AVM if no drain board or protection board is specified

DETAIL #:
0520-6005
System:
Aussie Membrane 520

Sidewalk Termination

AUSSIE MEMBRANE 520
90 Mil System



Notes:

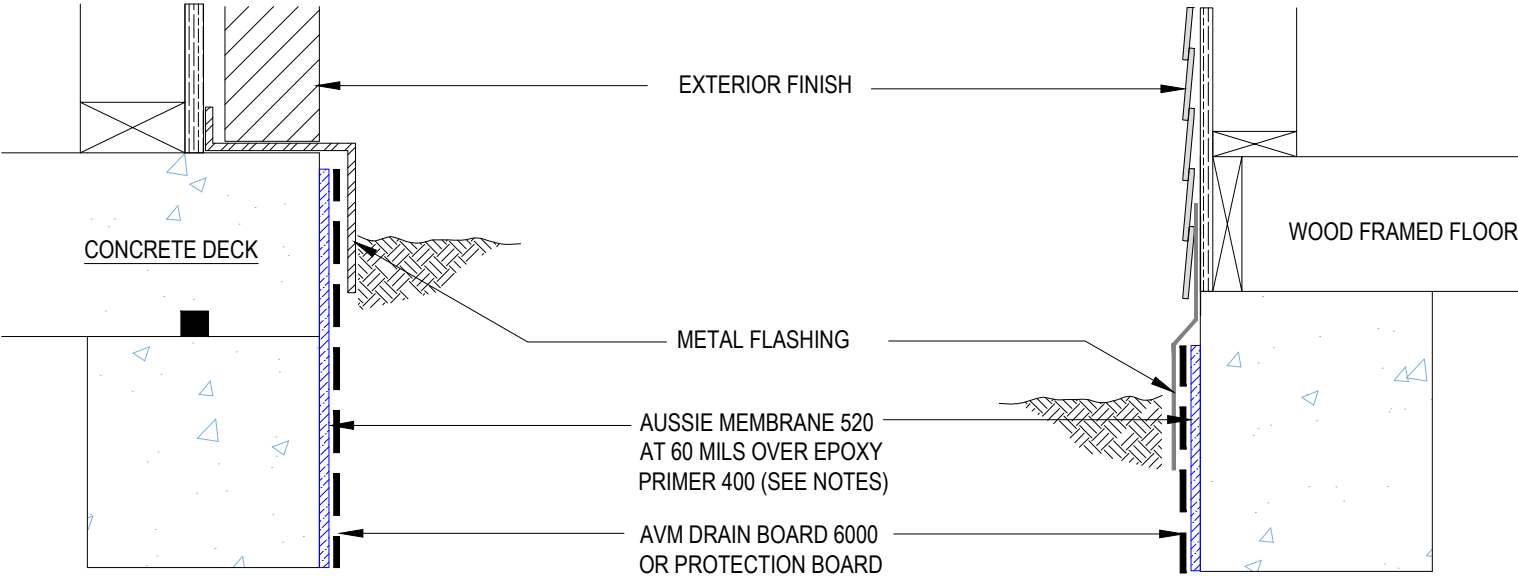
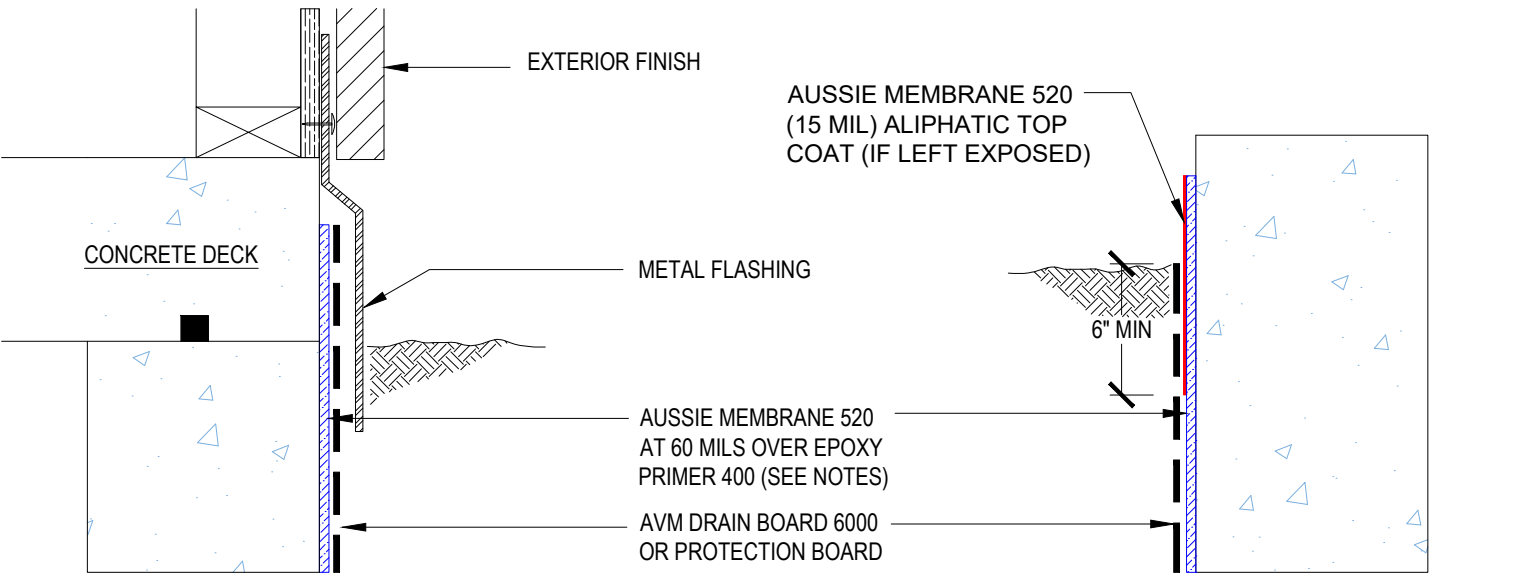
- 1. Aussie Membrane 520 is a Polyurethane liquid (Roller or Brush Applied) for Below-Grade, Between-Slab, Planters, Roof-Gardens and similar type Waterproofing.
- 2. Epoxy primer may be required if proper adhesion is not achieved - see installation instructions for further information
- 3. Contact AVM if no drain board or protection board is specified

DETAIL #:
 0520-6006
 System:
 Aussie Membrane 520

Backfilled Wall Terminations



AUSSIE MEMBRANE 520



Notes:

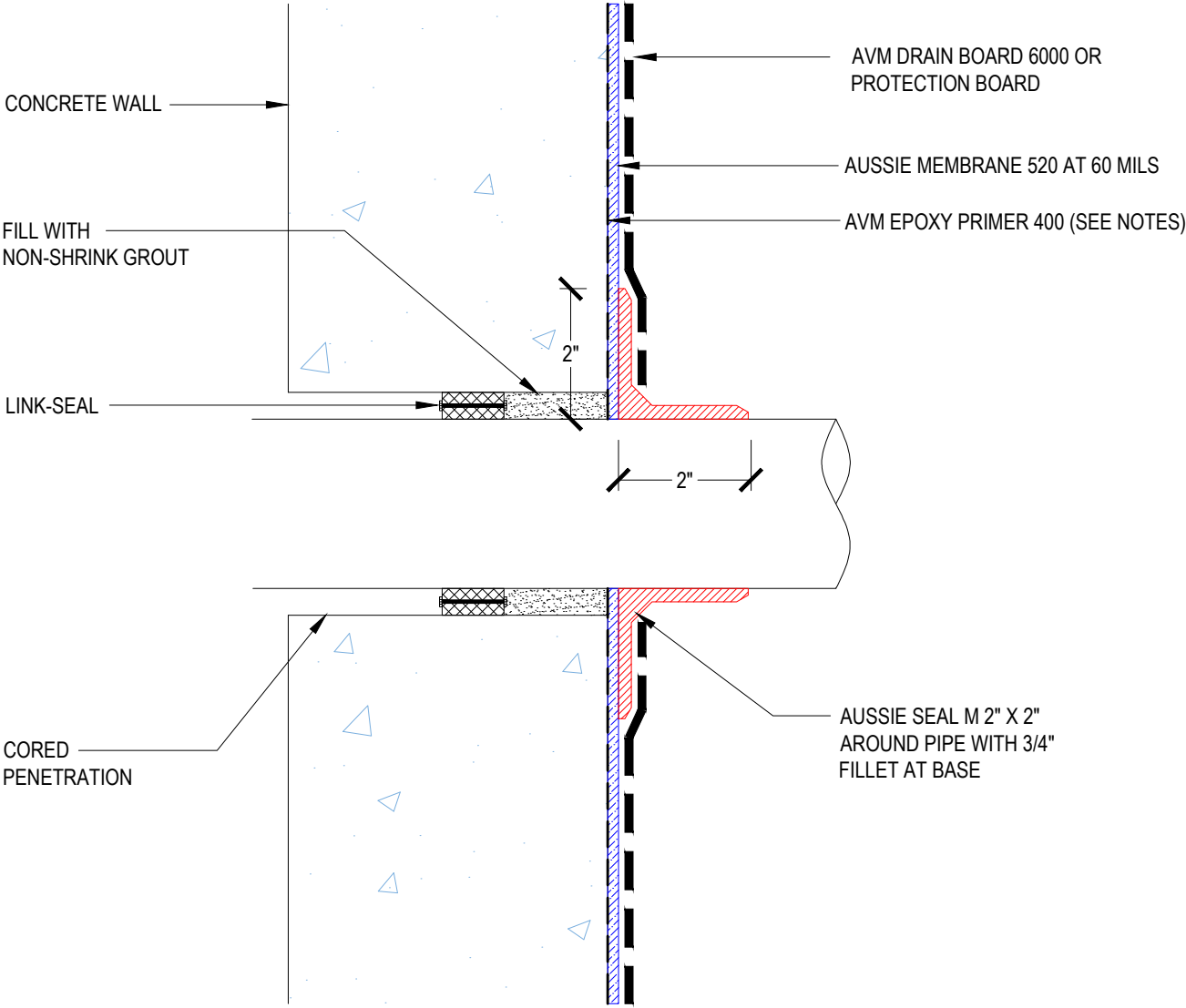
1. Aussie Membrane 520 is a Polyurethane liquid (Roller or Brush Applied) for Below-Grade, Between-Slab, Planters, Roof-Gardens and similar type Waterproofing.
2. Epoxy primer may be required if proper adhesion is not achieved - see installation instructions for further information
3. Contact AVM if no drain board or protection board is specified

DETAIL #:
0520-6504
System:
Aussie Membrane 520

Cored Wall Penetration



AUSSIE MEMBRANE 520



Notes:

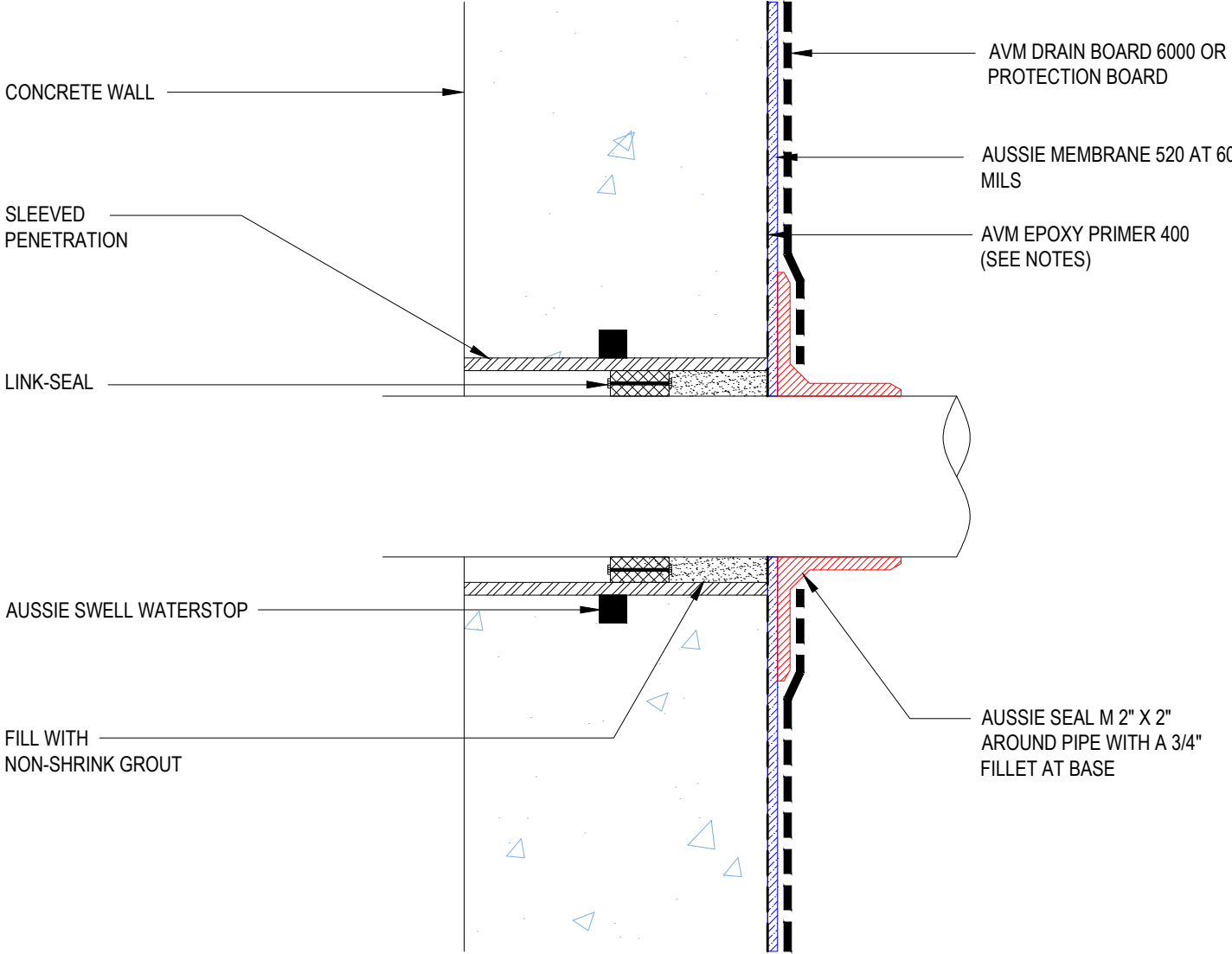
- 1. Aussie Membrane 520 is a Polyurethane liquid (Roller or Brush Applied) for Below-Grade, Between-Slab, Planters, Roof-Gardens and similar type Waterproofing.
- 2. Epoxy primer may be required if proper adhesion is not achieved - see installation instructions for further information
- 3. Contact AVM if no drain board or protection board is specified

DETAIL #:
 0520-6505
 System:
 Aussie Membrane 520

Sleeved Wall Penetration



AUSSIE MEMBRANE 520



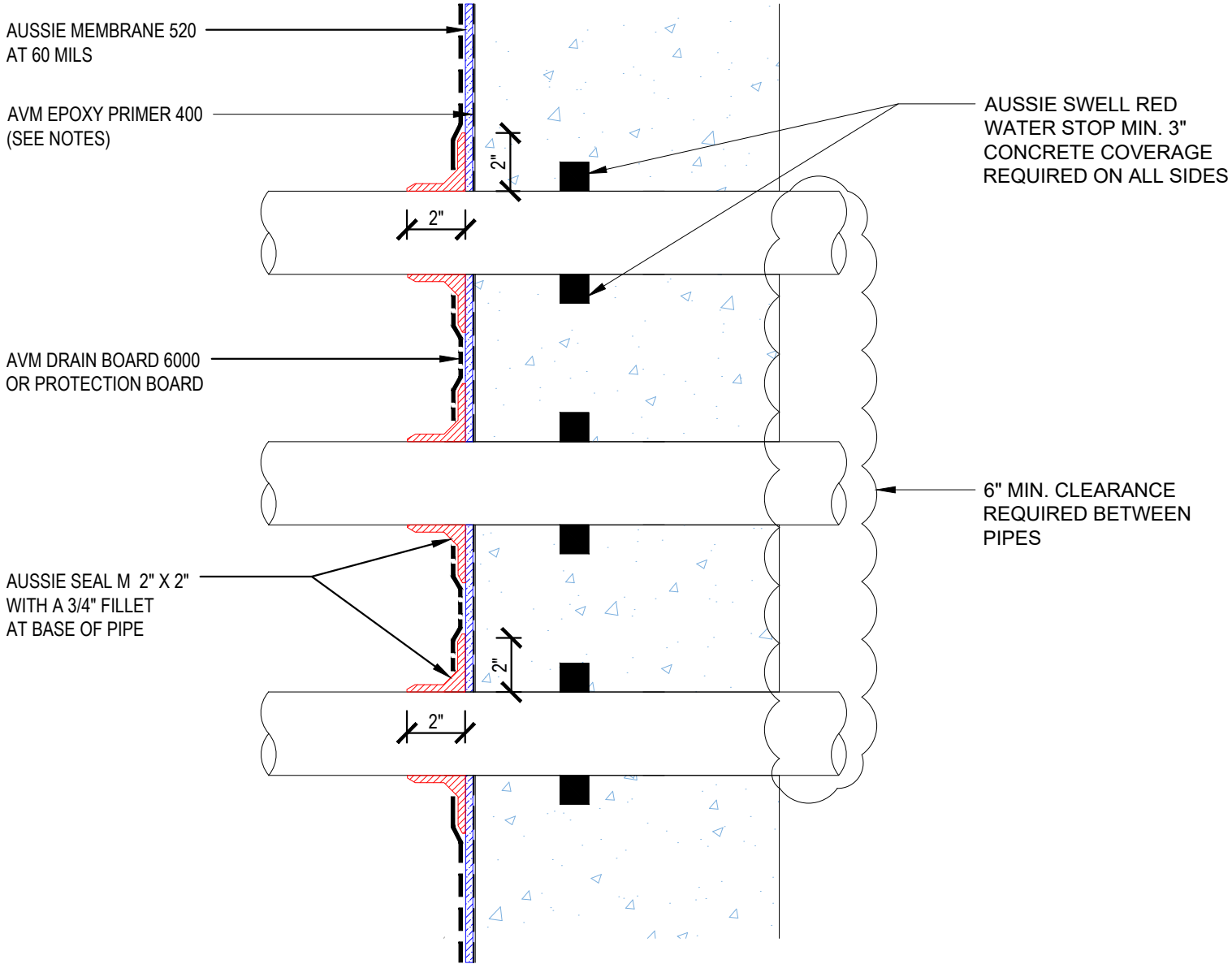
- Notes:**
1. Aussie Membrane 520 is a Polyurethane liquid (Roller or Brush Applied) for Below-Grade, Between-Slab, Planters, Roof-Gardens and similar type Waterproofing.
 2. Epoxy primer may be required if proper adhesion is not achieved - see installation instructions for further information
 3. Contact AVM if no drain board or protection board is specified

DETAIL #:
0520-6510
 System:
Aussie Membrane 520

Multiple Pipe Penetration



AUSSIE MEMBRANE 520



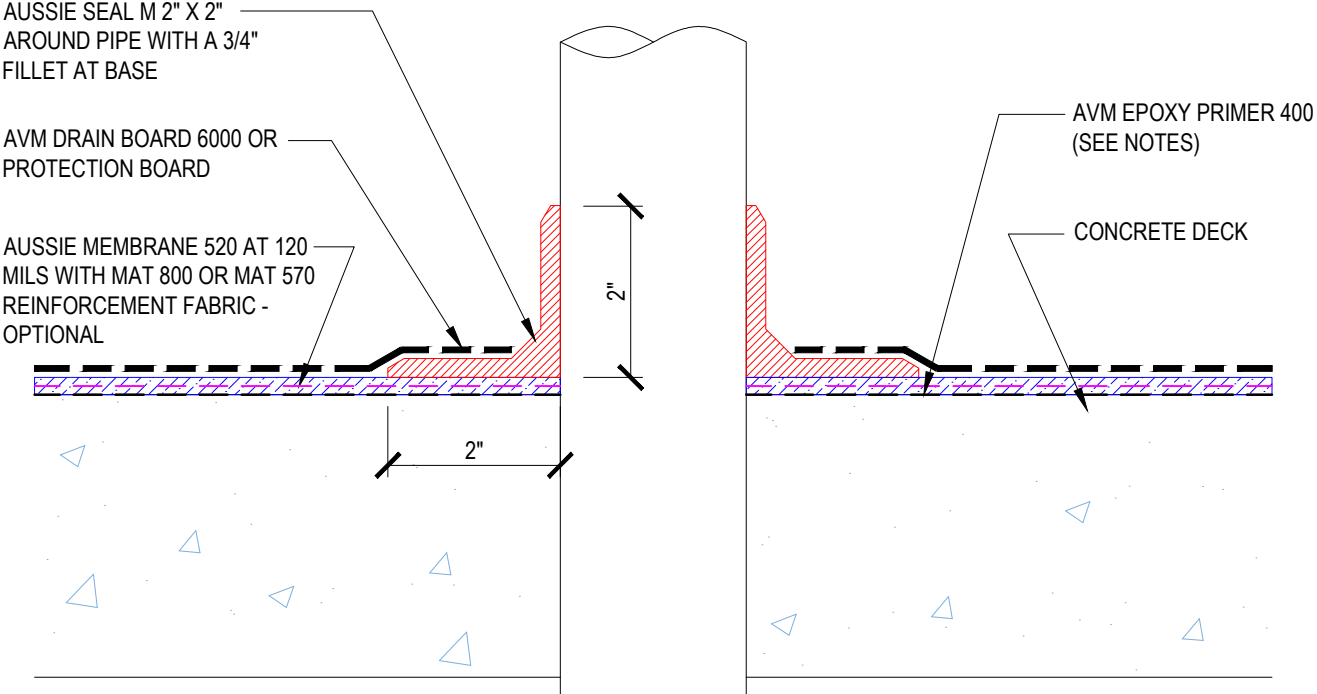
- Notes:**
1. Aussie Membrane 520 is a Polyurethane liquid (Roller or Brush Applied) for Below-Grade, Between-Slab, Planters, Roof-Gardens and similar type Waterproofing.
 2. Epoxy primer may be required if proper adhesion is not achieved - see installation instructions for further information
 3. Contact AVM if no drain board or protection board is specified

DETAIL #:
0520-6512
System:
Aussie Membrane 520

Deck Pipe Penetration



AUSSIE MEMBRANE 520 120 Mil System



Notes:

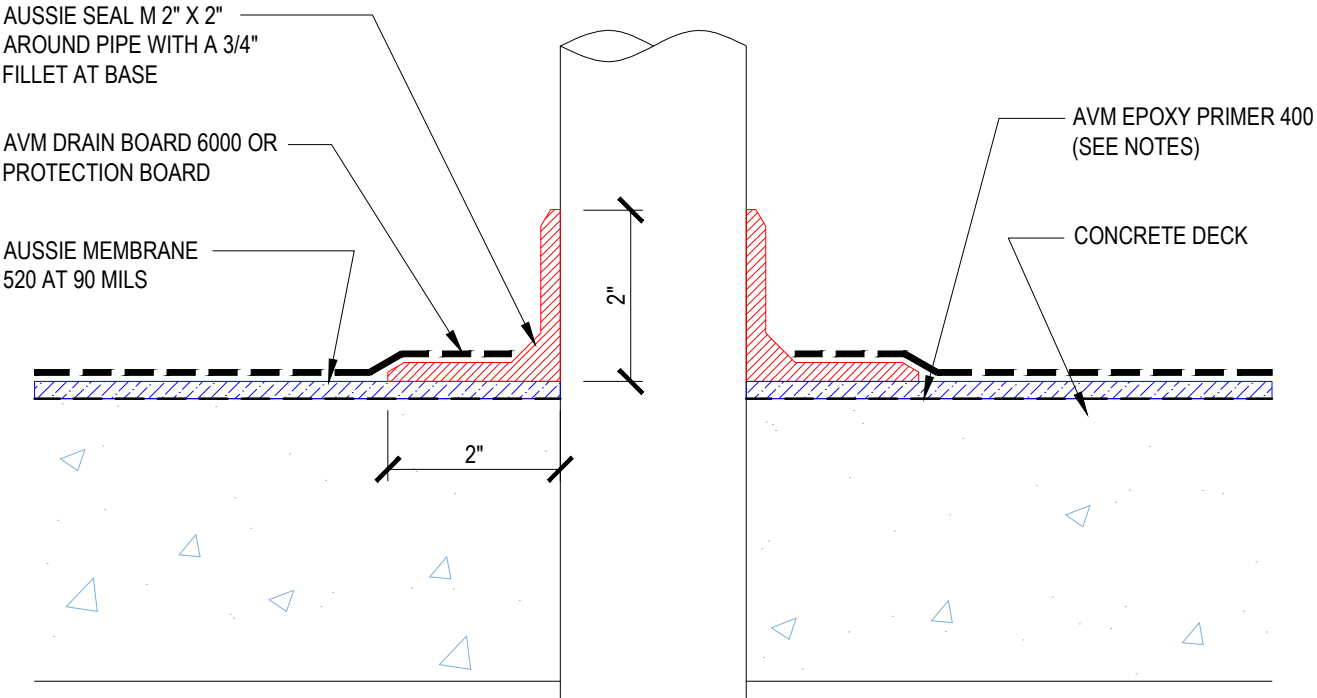
- 1. Aussie Membrane 520 is a Polyurethane liquid (Roller or Brush Applied) for Below-Grade, Between-Slab, Planters, Roof-Gardens and similar type Waterproofing.
- 2. Epoxy primer may be required if proper adhesion is not achieved - see installation instructions for further information
- 3. Contact AVM if no drain board or protection board is specified

DETAIL #:
0520-6513
System:
Aussie Membrane 520

Deck Pipe Penetration



AUSSIE MEMBRANE 520 90 Mil System



Notes:

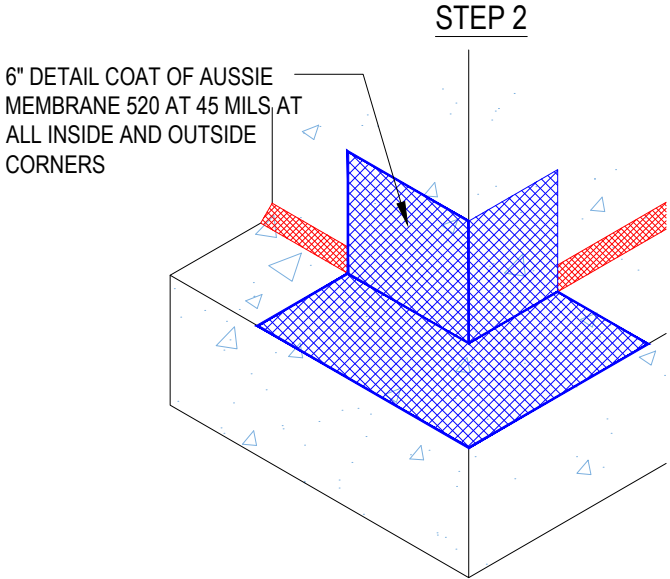
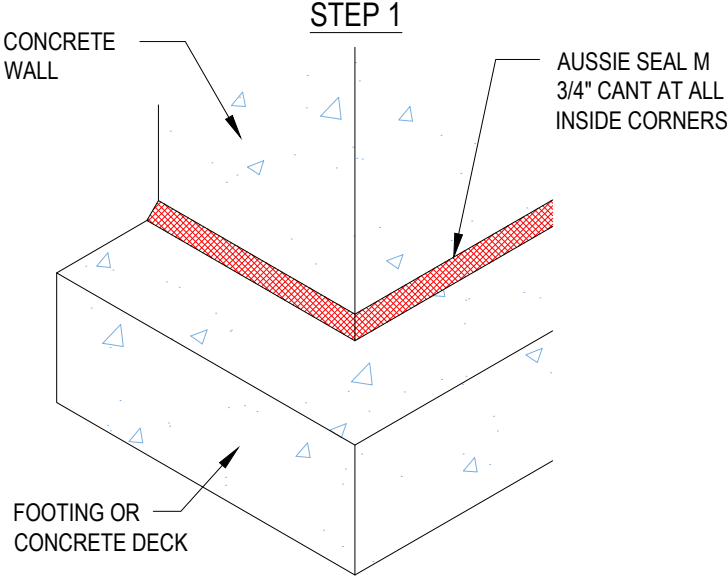
- 1. Aussie Membrane 520 is a Polyurethane liquid (Roller or Brush Applied) for Below-Grade, Between-Slab, Planters, Roof-Gardens and similar type Waterproofing.
- 2. Epoxy primer may be required if proper adhesion is not achieved - see installation instructions for further information
- 3. Contact AVM if no drain board or protection board is specified

DETAIL #:	0520-7006
System:	Aussie Membrane 520

Outside Corner



AUSSIE MEMBRANE 520



Notes:

1. Aussie Membrane 520 is a Polyurethane liquid (Roller or Brush Applied) for Below-Grade, Between-Slab, Planters, Roof-Gardens and similar type Waterproofing.
2. Epoxy primer may be required if proper adhesion is not achieved - see installation instructions for further information
3. Contact AVM if no drain board or protection board is specified

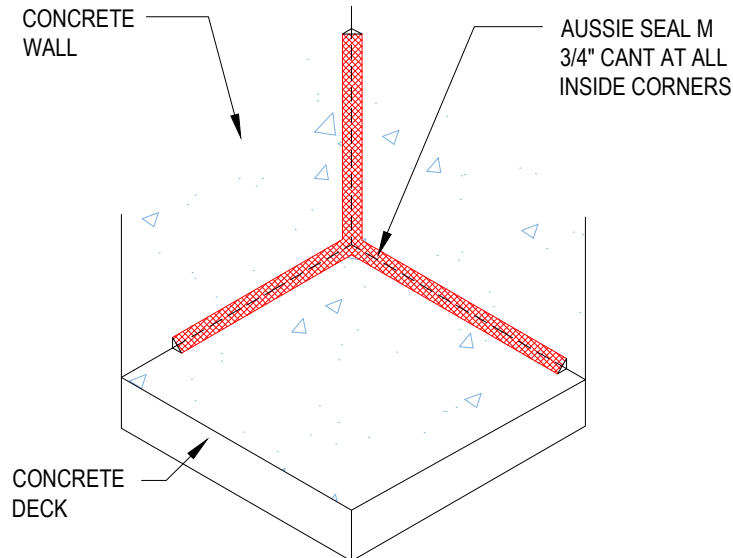
DETAIL #:
0520-7008
System:
Aussie Membrane 520

Inside Corner

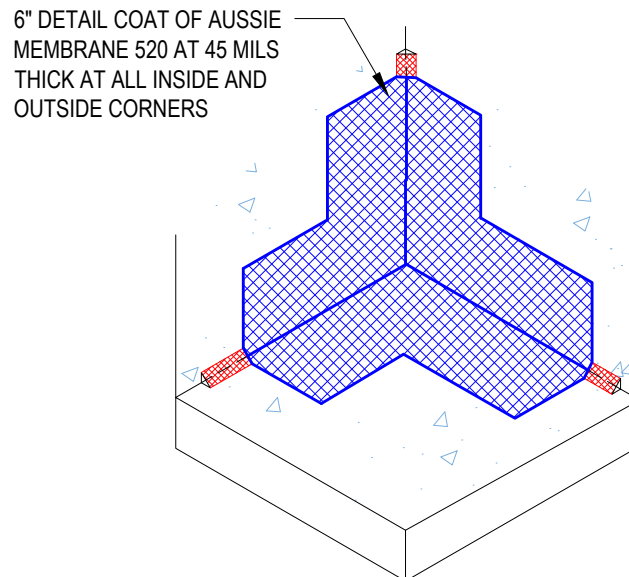


AUSSIE MEMBRANE 520

STEP 1



STEP 2



Notes:

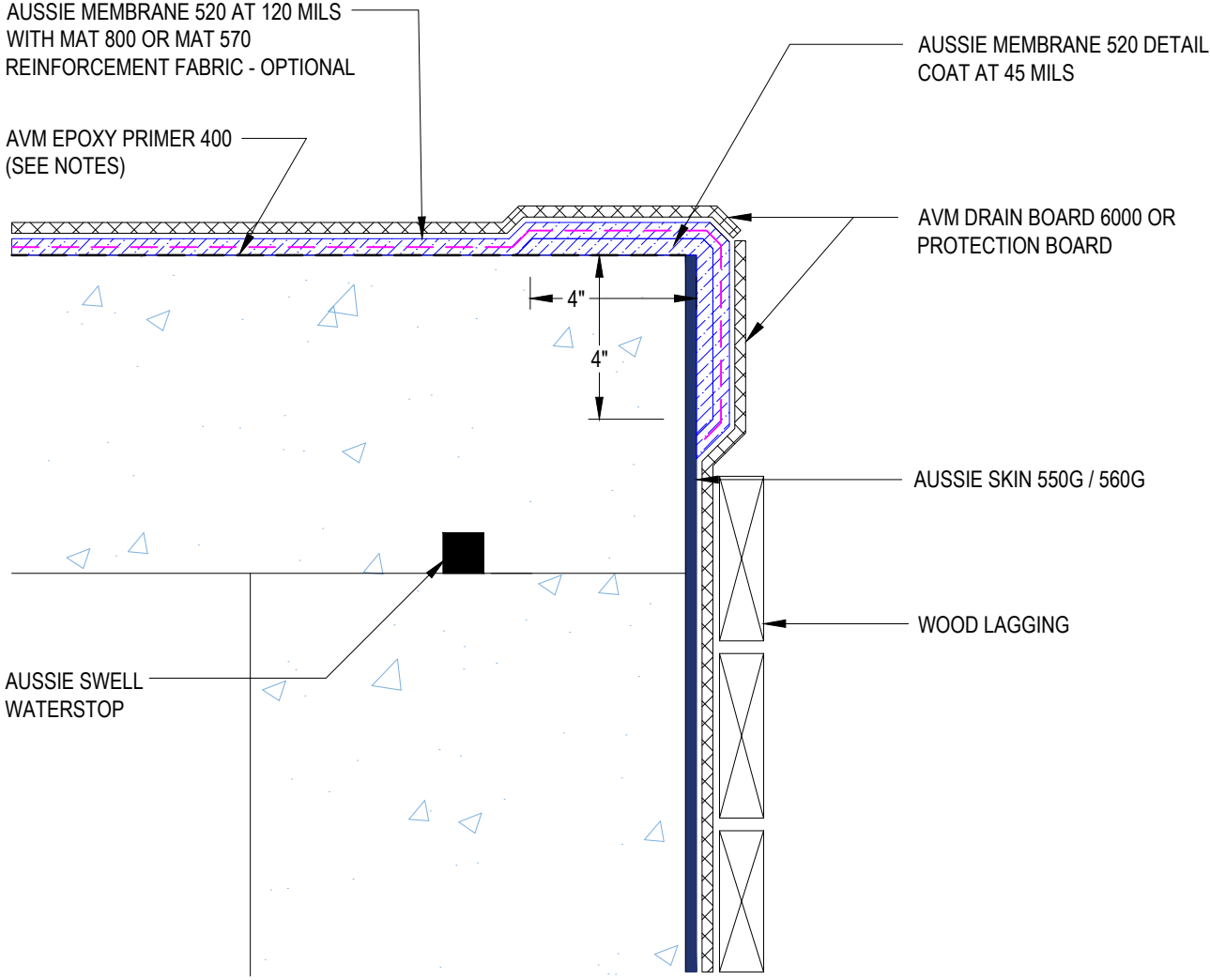
1. Aussie Membrane 520 is a Polyurethane liquid (Roller or Brush Applied) for Below-Grade, Between-Slab, Planters, Roof-Gardens and similar type Waterproofing.
2. Epoxy primer may be required if proper adhesion is not achieved - see installation instructions for further information
3. Contact AVM if no drain board or protection board is specified

DETAIL #:
0520-8000
 System:
Aussie Membrane 520

Transition to Aussie Skin



AUSSIE MEMBRANE 520 120 Mil System



Notes:

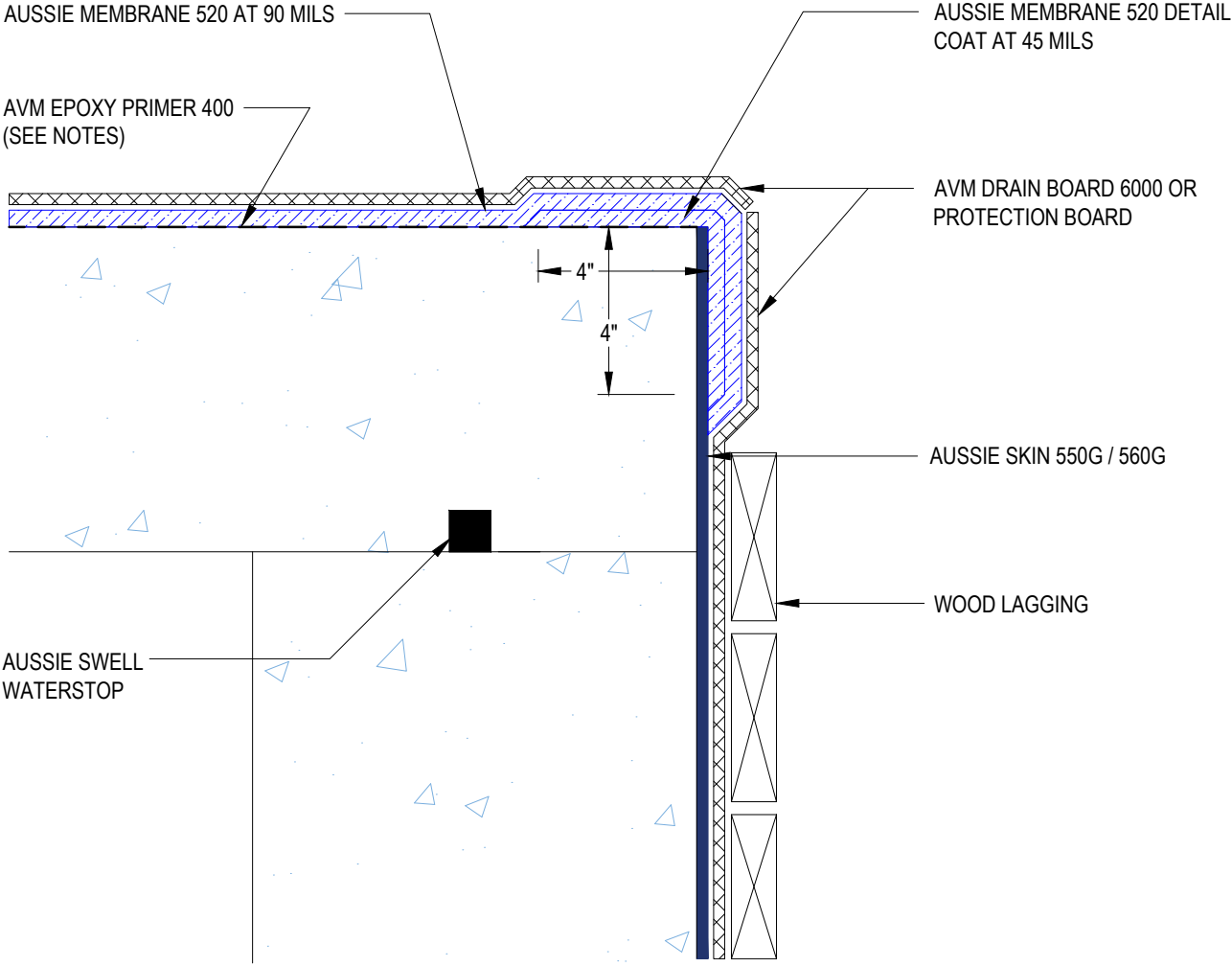
1. Aussie Membrane 520 is a Polyurethane liquid (Roller or Brush Applied) for Below-Grade, Between-Slab, Planters, Roof-Gardens and similar type Waterproofing.
2. Epoxy primer may be required if proper adhesion is not achieved - see installation instructions for further information
3. Contact AVM if no drain board or protection board is specified

DETAIL #:
0520-8001
System:
Aussie Membrane 520

Transition to Aussie Skin



AUSSIE MEMBRANE 520 90 Mil System



Notes:

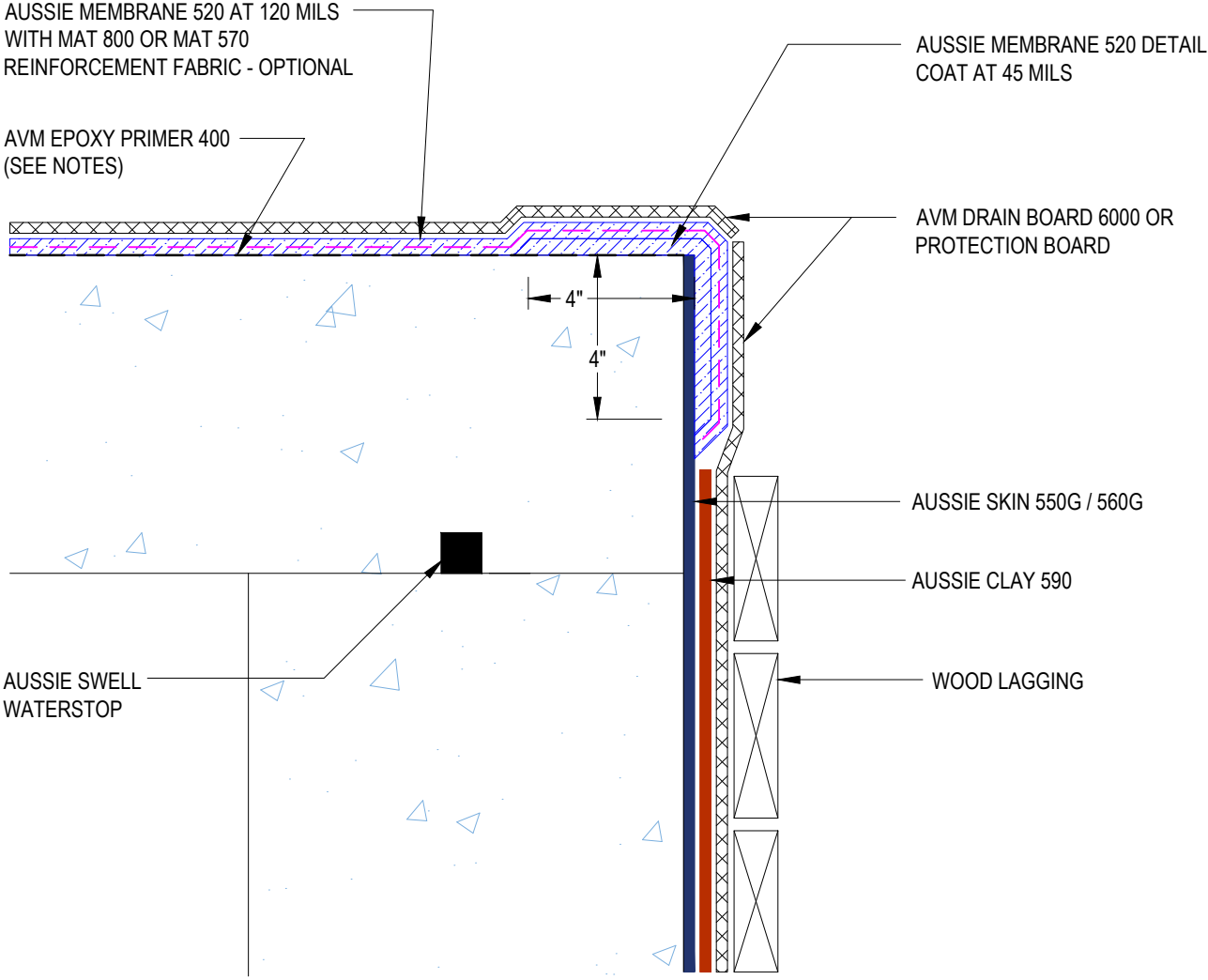
- 1. Aussie Membrane 520 is a Polyurethane liquid (Roller or Brush Applied) for Below-Grade, Between-Slab, Planters, Roof-Gardens and similar type Waterproofing.
- 2. Epoxy primer may be required if proper adhesion is not achieved - see installation instructions for further information
- 3. Contact AVM if no drain board or protection board is specified

DETAIL #:
0520-8002
 System:
Aussie Membrane 520

Transition to Aussie Skin Dual Layer System



AUSSIE MEMBRANE 520 120 Mil System



Notes:

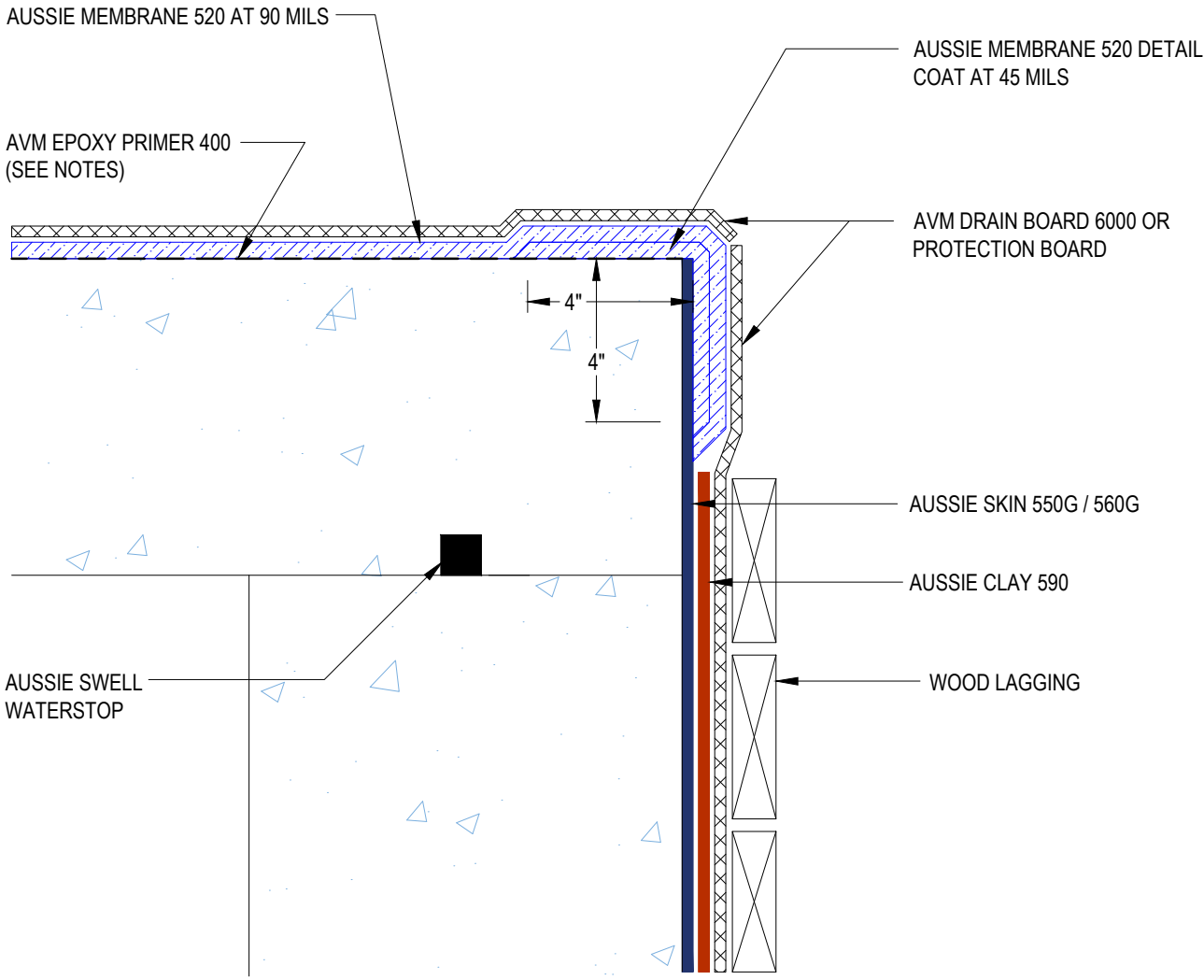
1. Aussie Membrane 520 is a Polyurethane liquid (Roller or Brush Applied) for Below-Grade, Between-Slab, Planters, Roof-Gardens and similar type Waterproofing.
2. Epoxy primer may be required if proper adhesion is not achieved - see installation instructions for further information
3. Contact AVM if no drain board or protection board is specified

DETAIL #:
0520-8003
 System:
Aussie Membrane 520

Transition to Aussie Skin Dual Layer System



AUSSIE MEMBRANE 520 90 Mil System



Notes:

1. Aussie Membrane 520 is a Polyurethane liquid (Roller or Brush Applied) for Below-Grade, Between-Slab, Planters, Roof-Gardens and similar type Waterproofing.
2. Epoxy primer may be required if proper adhesion is not achieved - see installation instructions for further information
3. Contact AVM if no drain board or protection board is specified