

Aussie Coat™ 620V - Vehicular Traffic Coating



SYSTEM DESCRIPTION

The **Aussie Coat 620V** is a two component, fast setting, rapid curing, solvent free, high performance, and high solids polyurea/urethane MMA polymer waterproofing membrane. This membrane can be used as a heavy-duty wearing surface on prepared interior or exterior concrete, under asphalt overlays, plywood and metal surfaces.

WHERE TO USE

Typical uses include vehicular concrete parking decks, pedestrian walkways, patios, stairways, sunrooms, metal roofs, and under asphalt overlays.

PRODUCTS & ACCESSORIES

AVM Top Coat 620-AL: Two-component, UV stable (aliphatic) hybrid polyurea waterproofing membrane topcoat. Can be used in multiple coats for the **Aussie Coat 620V** Vehicular traffic coating system or as a topcoat over Aussie Membrane 520 for the **Aussie Coat 620P** - Pedestrian coating system.

AVM Epoxy Primer 401 or 420: Two-component, solvent-based, epoxy primer for use over concrete, plywood, metal flashings and other polyurethane and acrylic deck coatings.

Aussie Seal M: Marine-grade moisture cure polyether sealant for use as a detailing membrane and at cant strips.

Silica Sand: Used as a broadcast sand/aggregate for traction and grip as required.

LIMITATIONS

Do not open until ready to use. Any off ratio mixing of the product will affect the properties and the product may not cure. This product contains Isocyanates and Curative Material.

DELIVERY, STORAGE & HANDLING

Delivery of all the system materials to the job site must be in their original sealed containers and bags, with the manufacturer's name and label intact. Handle and store containers and bags in accordance with printed instructions.

Store at temperatures between 50°F and 90°F. d. Keep all materials out of the reach of children. e. If irritation occurs during use, liberally flush affected areas with water. If irritation continues, see a physician immediately.

Shelf Life of AVM 620-AL is 1 Year of date of manufacture when stored in recommended conditions.

SECTION 1 – GENERAL INSTALLATION GUIDELINES

1.1 SUBSTRATE

Remove all cementitious coatings, paint, paint stripes, and stains or anything else that may interfere with adhesion by power washing (800-1,000 psi) or shot-blasting the deck. The prepared substrate should be clean and dust free and have an ICRI #3 Surface Prep profile which resembles “medium sandpaper”.

The substrate must also be free of pinholes, cracks or other imperfections that could compromise the system. Seal all joints and cracks flush with Aussie Seal M (or approved polyether sealant) and backer rod if required.

1.2 PRIMER

If an adhesion test is completed on the deck and the results determine its needed, the following steps should be used in the application of AVM Epoxy Primer 401 or 420.

If pinholes are present in the concrete, apply AVM Epoxy Primer 401 or 420 to fill in the pinholes to avoid outgassing. Apply the next layer while the epoxy primer is still tacky (no puddles) or a maximum 24 hours after the epoxy primer was applied. Please refer to the AVM Epoxy Primer 401 or 420 Technical Data Sheet for additional information.

1. Mix part A separately for 60 seconds using a drill and clean paddle.
2. Mix part B separately for 60 seconds using a drill and clean paddle.
3. Combine Part A and Part B into a single container and thoroughly mix for 2 additional minutes using a drill and clean paddle. (Product is supplied in kits, so no pre-measuring is required. Make sure to use the entire contents of both Part A and Part B).
4. AVM Epoxy Primer 401 or 420 is now ready to be applied. Do not mix more material than can be used within 20 minutes.

1.3 MOCKUP (IF REQUIRED)

Establish a 100-200 sq/ft mockup area completed with the intended materials. The mockup should be approved by a project representative for functionality, slope, slip resistance and aesthetics. Once the mockup is approved, it shall become the benchmark for the installation and finish on all the decks to be coated.

SECTION 2 – TYPICAL VEHICULAR ASSEMBLY OVER CONCRETE

2.1 MIXING

1. Using a mechanical mixer, premix Part-A & Part-B of 620-AL separately for 1-2 minutes to obtain a uniform color, making sure to scrape the solids from the bottom and sides of both containers.
2. Pour Part-B into Part-A slowly and while mixing, scrape the sides of the bucket.
3. Mix the combined Part-A and Part-B for 2-3 minutes from bottom to top until a uniform color is obtained.

2.2 APPLICATION

1. Base Coat: Pour the mixed 620-AL material out in a stream along the short side of the deck and spread material out with a notched squeegee and apply at a rate of **55 sq/ft per gallon** and a minimum **30 dry mils thick**.
2. Allow the base coat to fully cure, approximately 30 minutes to 2 hours (will vary depending on weather conditions) before installing the 30 mil intermediate coat.
3. Once the intermediate coat is still tacky but firm, broadcast 16-30 silica sand to refusal into the intermediate coat. Allow the intermediate coat to sit another 30 minutes to 2 hours prior to installation of the final topcoat.
4. Once fully cured, sweep or blow any excess sand from the area prior to installing the topcoat.
5. Pour mixed 620-AL over the sanded area at a minimum of 15 dry mils thick and allow the topcoat to properly cure.
6. Backrolling is not required but may be utilized to help achieve a uniform finish.
7. This will give a final 75 mil vehicular traffic coating.
8. Allow approximately 12 hours (depending on weather) prior to allowing traffic on the coating.
 - Primer is not required between coats.

9.

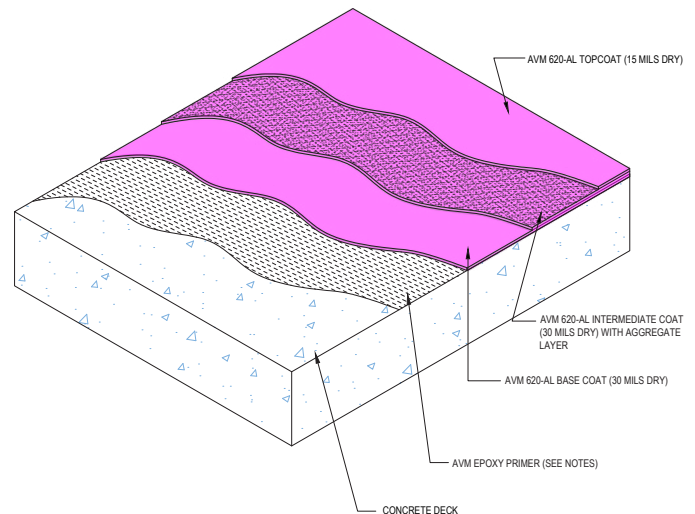
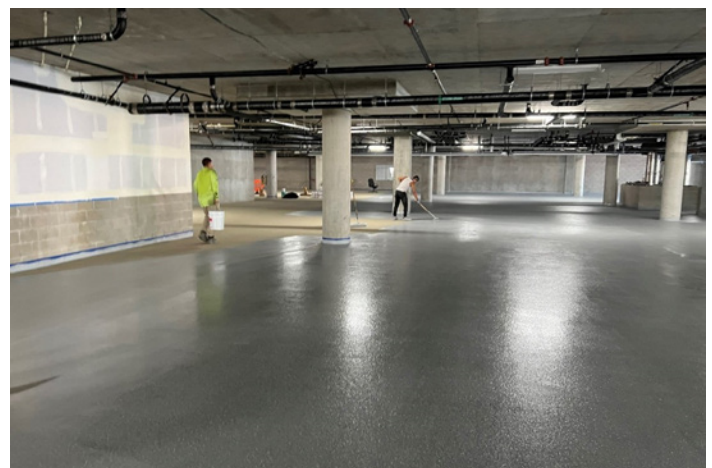


FIGURE 2.2 – TYPICAL ASSEMBLY OVER CONCRETE



Installation Instructions

Aussie Coat™ 620V Technical Information

Property	Results	Test Method
Specific Gravity	Side A: 1.05 ± 0.1 Side B: 0.99 ± 0.1	
Hardness	80 ± 3	ASTM D-2240 Shore A
Pot Life (min @ 75°F [24°C], 50% RH)	15 ± 5 minutes	
Tack Free Time	3-4 Hours	
Tensile Strength	2500 ± 100 pli (17.2 ± 0.7 kN/m)	ASTM D-412
Elongation	800 ± 100%	ASTM D-412
Tear	300 ± 25 pli (52.5 ± 4.4 kN/m)	ASTM D-624
Viscosity at 75°F	Side A: 1500-2500 cps Side B: 50-150 cps	
Total Solids by Volume	97%	ASTM D-2697
Volatile Organic Compounds	<.049 lbs/gallon (59 gm/liter)	ASTM D-2369-81

AVM System 620V is compliant with CSA S413-14

Packaging

Item	Packaging	Approx Shipping Weights	No. of Kits per Pallet	Pallet Weights	VOC
620-AL 1 Gal Kit Part-A	0.8 Gallon	9 Lbs	180 Part-A on Pallet 1	1,680 Lbs	0.00 lb/gal
620-AL 1-Gal Kit Part-B	0.2 Gallon	21 Lbs	180 Part-B on Pallet 2	465 Lbs	0.00 lb/gal
620-AL 5-Gal Kit Part-A	4 Gallons	45 Lbs	48 Part-A on Pallet 1	2,220 Lbs	0.00 lb/gal
620-AL 5-Gal Kit Part-B	1 Gallon	11 Lbs	48 Part-B on Pallet 2 (12 Boxes)	598 Lbs	0.00 lb/gal

Coverages

Item	Coverage Rate
AVM 620-AL Aliphatic @ 30 Mils	55 sqft/gal
AVM 620-AL Aliphatic @ 20 Mils	80 sqft/gal
AVM 620-AL Aliphatic @ 15 Mils	105 sqft/gal

Note: These are theoretical coverage rates and may vary depending on substrate types or if used as a topcoat over sand.

Installation Instructions

Coverages: The following coverages are based on controlled tests. Actual coverages may vary.

Material	Over Concrete or Metal Surfaces	Over wood, sealed or textured surfaces	Over Porous Surfaces (CMU)
AVM Epoxy Primer 401	300 sq. ft./gal.	250 sq. ft./gal	150 sq.ft./gal

Packaging:

Item / Component	Packaging	Approx Shipping Weights	VOC
1 Gal Kit (Epoxy Primer 401)			
AVM Primer 401 Part A	1 gal.	11.0 lbs.	90 Grams/Liter
AVM Primer 401 Part B	1 gal.	16 lbs.	90 Grams/Liter
5 Gal Kit (Epoxy Primer 401)			
AVM Primer 401 Part A	5 gal.	55.0 lbs.	90 Grams/Liter
AVM Primer 401 Part B	5 gal.	85 lbs.	90 Grams/Liter

Packaging:

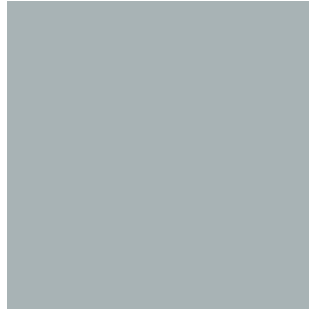
Item / Component	Packaging	Approx Shipping Weights	VOC
AVM Epoxy Primer 420 Kit	2.4 Gal Kit	26 Pounds	0 g/L

Aliphatic Top Coat Colors

Standard Color (Stocked Item) : Medium Gray
All other colors are special order



Dark Gray



Medium Gray



Light Gray



Chocolate



Ash Brown



Brick Red



Dark Tan



Tan

Note: Colors shown are as accurate as possible. Applied color appearance may vary due to surface texture, lighting, size, shape, method of application and adjacent colors. AVM Industries, Inc. reserves the right of reasonable variation. Colors might vary from batch to batch. Custom colors and color matching are available subject to extra charge and minimum order quantities.