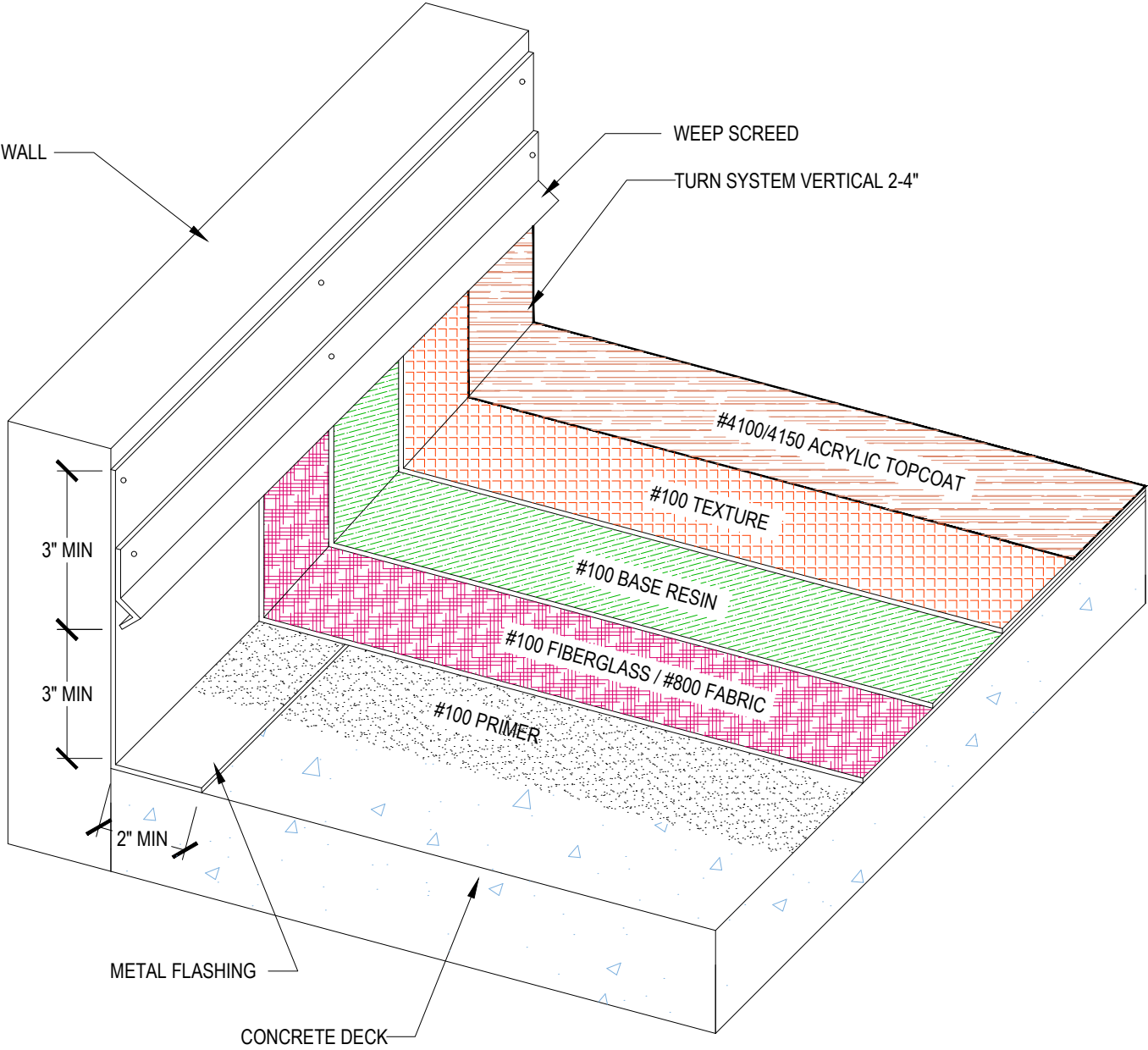


DETAIL #:
0100-EFD-001-C-ISO
AVM System 100
Elasto Fiberdeck

Standard Assembly
Over Concrete Substrate
AVM System 100 Elasto Fiberdeck



Notes:

1. Concrete substrate to be minimum 2" thick at 2,000 psi.
2. Metal flashing to be minimum 2" 26 gauge (3-4" on to deck preferred) min 6" on vertical.
3. #100 Texture comes in acrylic or cement based.
4. #100 Fiberglass or #800 Fabric may be used for resin coat.
5. See application instructions for full system recommendations and requirements.